



**LIGHT<sup>MY</sup>  
BRICKS**



**LEGO NASA APOLLO SATURN V  
#92176 LIGHT KIT  
INSTALLATION GUIDE**

# Light My Bricks



## LEGO NASA APOLLO SATURN V 92176 INSTALLATION GUIDE

Hi There!

We're here to help you get started on the LEGO  
NASA Apollo Saturn V 92176 Light Kit.

This PDF details the instructions for the LED light kit only. If  
you are wishing to purchase this product, please [click here](#)  
to view the product page.

If you run into any issues, please refer to the troubleshoot-  
ing section towards the end of this guide.

Have fun and enjoy!





## PACKAGE CONTENTS:



12x White 30cm Bit Light \*



1x Flicker Effects Board  
1x N/C Push Board  
2x 2-Port Expansion Board  
1x 6-Port Expansion Board  
2x 8-Port Expansion Board \*



1x 5cm Connecting Cable  
1x 15cm Connecting Cable  
2x 30cm Connecting Cable \*  
2x 50cm Connecting Cable



1x USB Power Cable  
(Power Source not Included)

## ASSORTED BRICKS:



- 11x 1x1 Round Plate - Trans Orange
- 9x 4L Bar - Trans Red
- 2x Brick 1x1 Modified with Stud on one side - Black

\* Indicates components which include spares

## Contents

Before You Begin	5
Blueprint	8
Instructions	10
Final Product	30
Troubleshooting	31
Contact	36

## Before You Begin



### Laying cables in between and underneath bricks

Cables can fit in between and underneath LEGO® bricks, plates, and tiles providing they are laid correctly between the LEGO® studs. Do NOT forcefully join LEGO® together around cables; instead ensure they are laying comfortably in between each stud.

*CAUTION: Forcing LEGO® to connect over a cable can result in damaging the cable and light.*



### Connecting Cable Connectors To Expansion Boards

Take extra care when inserting connectors to ports of Expansion Boards. Connectors can be inserted only one way. With the expansion board facing up, look for the soldered “=” symbol on the left side of the port. The connector side with the wires exposed should be facing toward the soldered “=” symbol as you insert into the port. If a plug won’t fit easily into a port connector, do not force it.

*Incorrectly inserting the connector can result in bent pins inside the port or possible overheating of the expansion board when connected.*

## Before You Begin



### Connecting Cable Connectors To Strip Lights

Take extra care when inserting connectors to ports on the Strip Lights. Connectors can be inserted only one way. With the Strip Light facing up, ensure the side of the connector with the wires exposed is facing down. If a plug won't fit easily into a port connector, don't force it. Doing so will damage the plug and the connector.



### Connecting Micro Cable Connectors To Micro Expansion Board Ports

Take extra care when inserting the micro connectors to micro ports of Micro Expansion Boards. Connecting Micro Bit Lights to Micro Expansion Boards is similar to connecting lights and cables to Strip Lights. With the expansion board facing up, ensure the side of the connector with the wires exposed is facing down. If a plug won't fit easily into a port connector, do not force it. Use your fingernail to push the plastic part of the connector to the micro port.

## Before You Begin

### Installing Bit Lights Under Lego® Bricks And Plates

When installing Bit Lights under LEGO® pieces, ensure they are placed the correct way up (Yellow LED component exposed). You can either place them directly on top of LEGO® studs or in between.

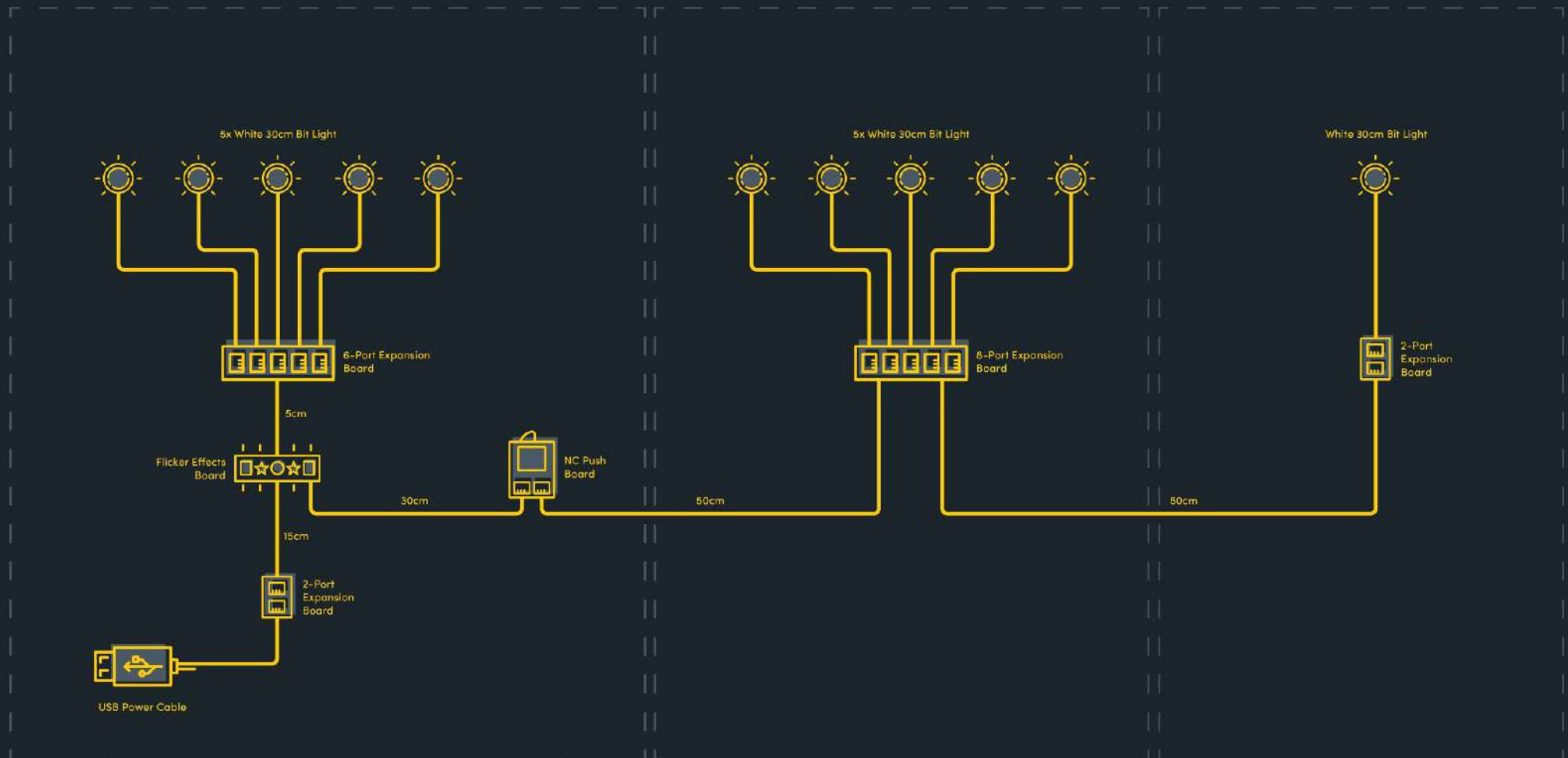


# BLUEPRINT

## Bottom Section Jets

## Middle Section Jets

## Top Section Jets



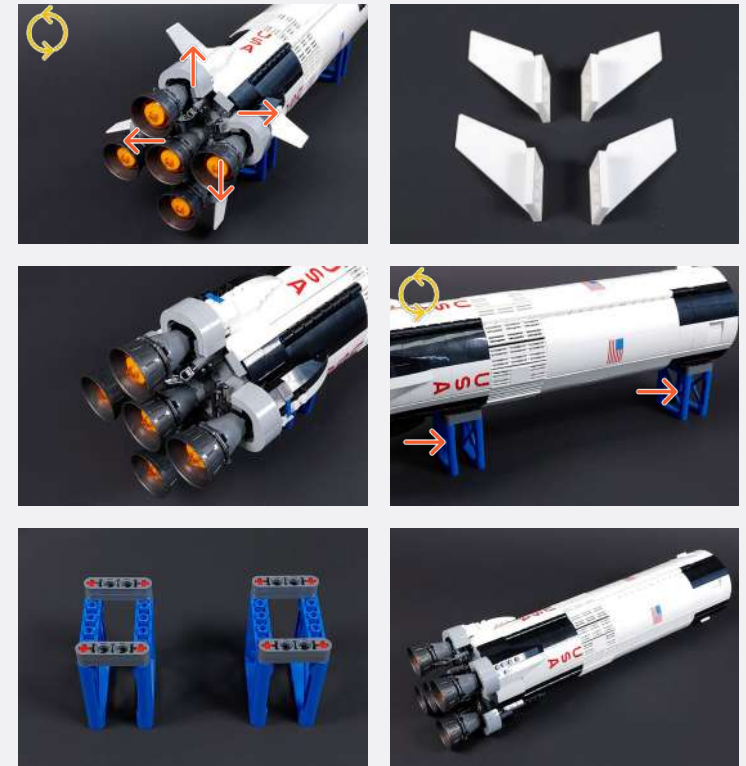
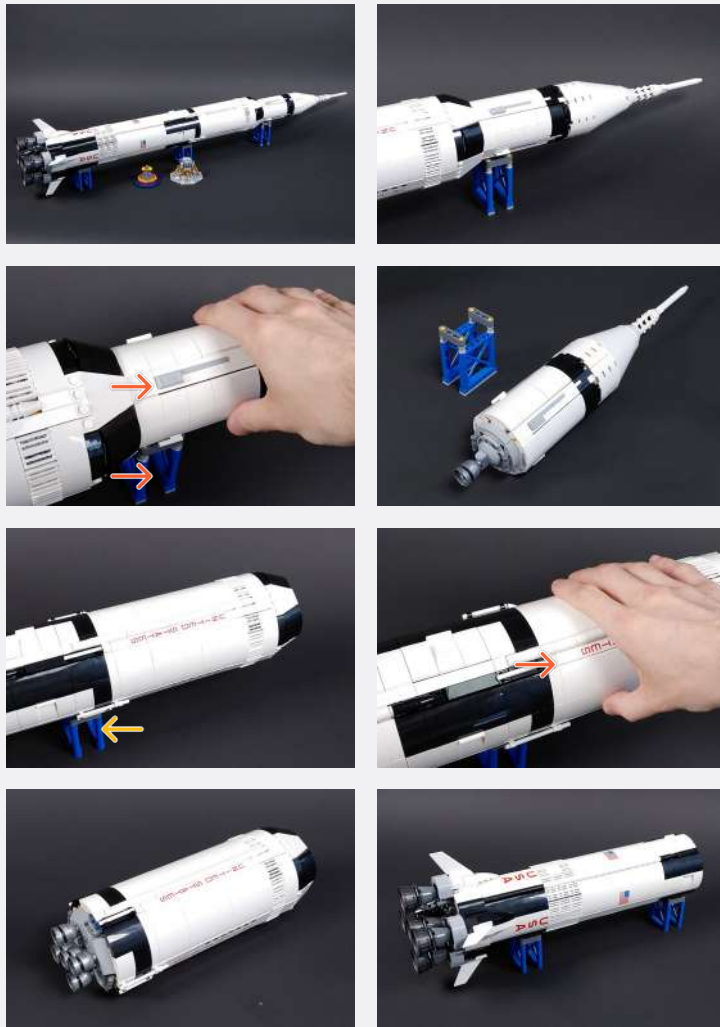




## INSTRUCTIONS

To ensure a smooth installation of your light kit, please read and follow each step carefully. If you run into any issues, please refer to the online troubleshooting guide.

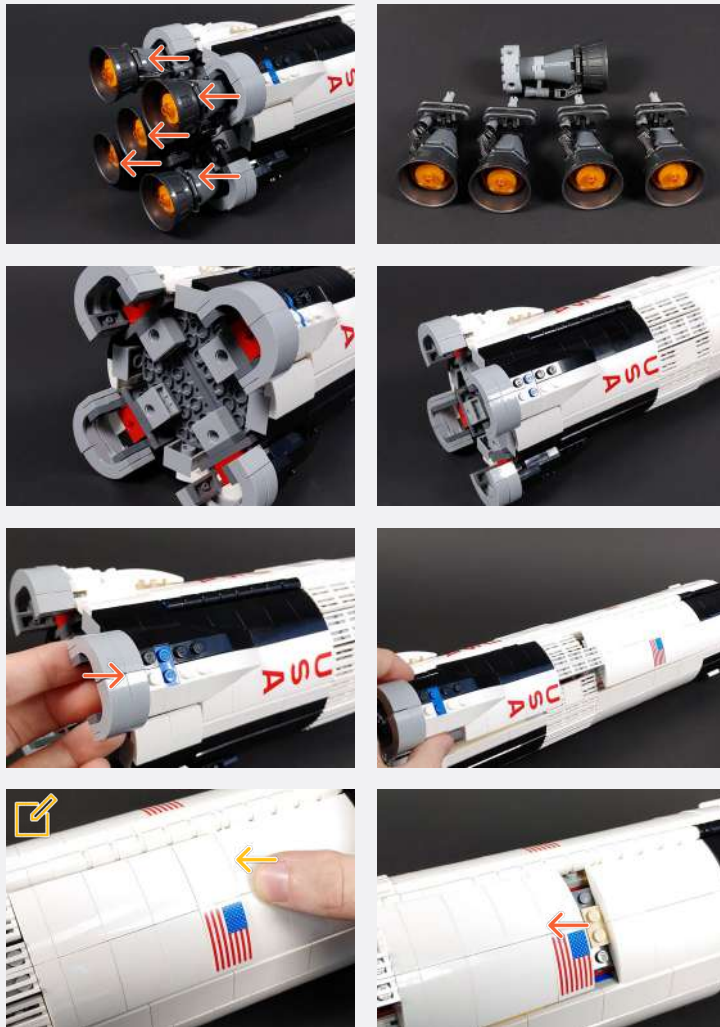
1



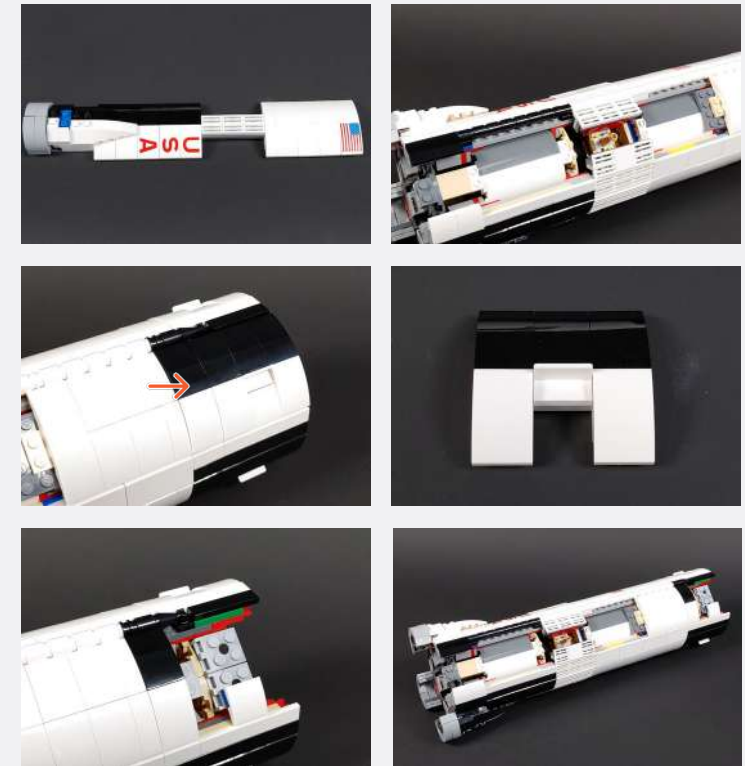
**Legend**

- DISCONNECT
- CONNECT / RECONNECT
- ↻ TURN / FLIP
- DIRECTIONAL
- ↔ TWIST / BRAID
- ✳ POWER ON TEST
- 📄 NOTE ICON

2



Press on the panel and remove the bottom half of the rocket panel cover



**Legend** DISCONNECT CONNECT / RECONNECT TURN / FLIP DIRECTIONAL TWIST / BRAID POWER ON TEST NOTE ICON

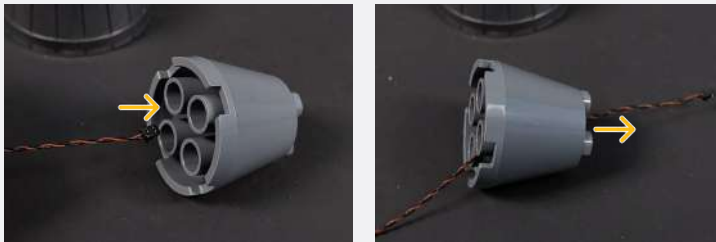
**3**



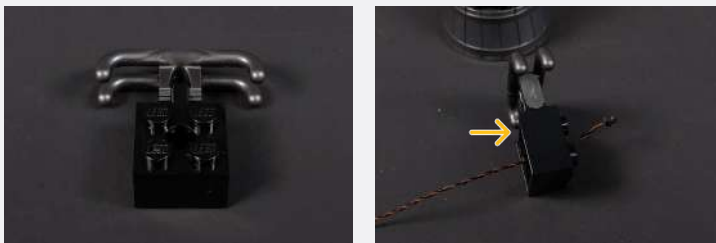
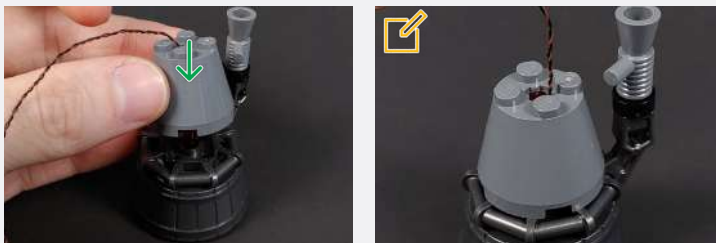
**Legend**

- DISCONNECT
- CONNECT / RECONNECT
- TURN / FLIP
- DIRECTIONAL
- TWIST / BRAID
- POWER ON TEST
- NOTE ICON

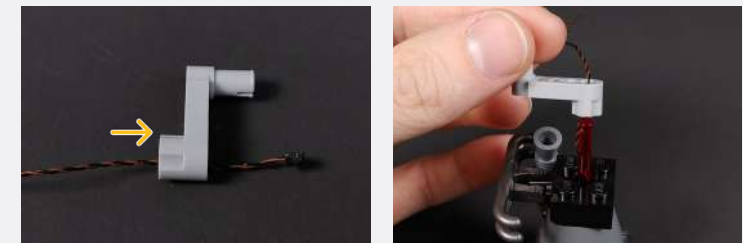
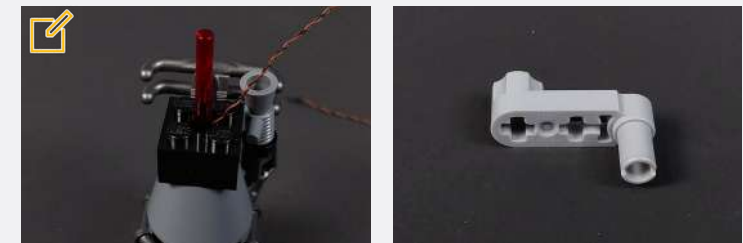
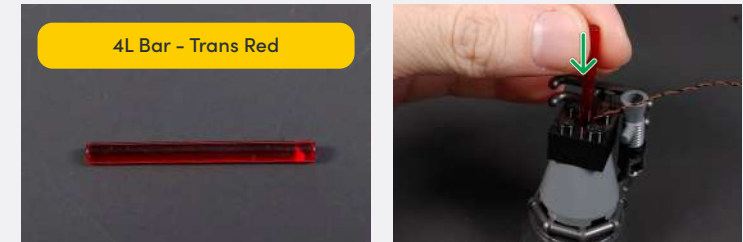
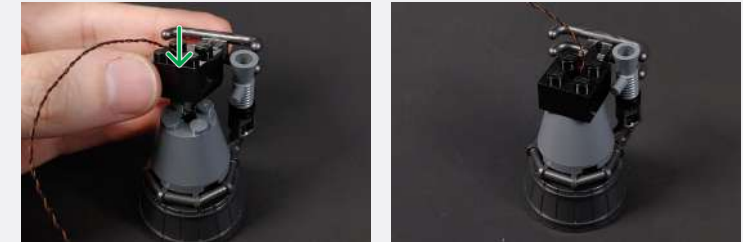
Push the bar in until it clicks lightly



The end of the bar should line up with the top of the grey cone

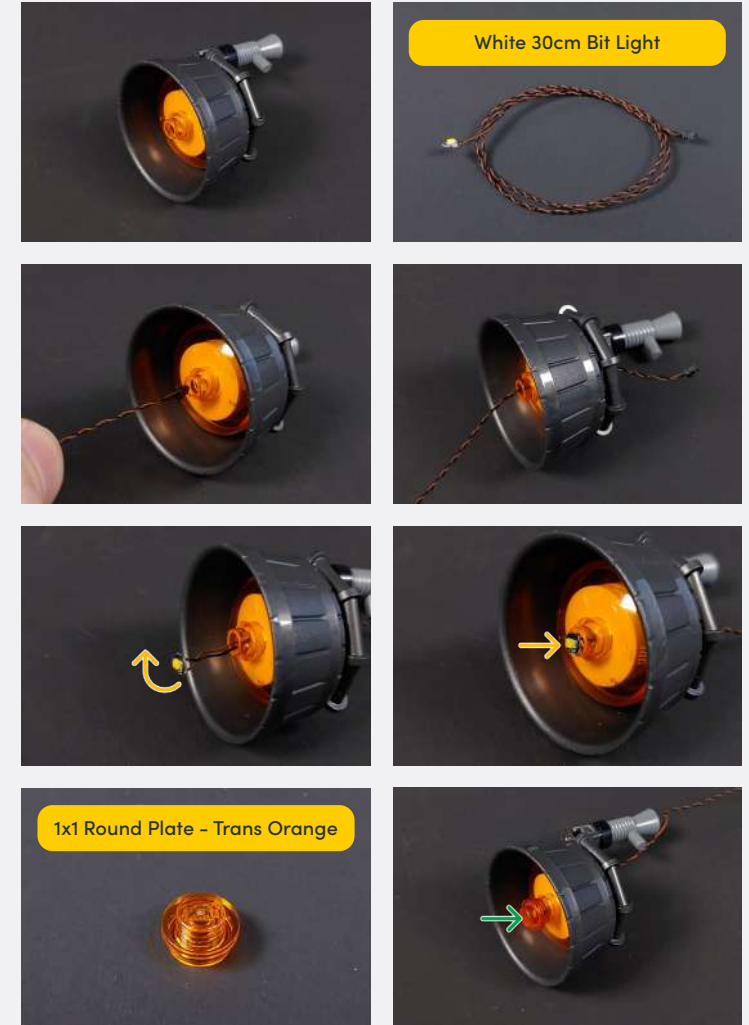


Push the bar as far as it can go without using much force



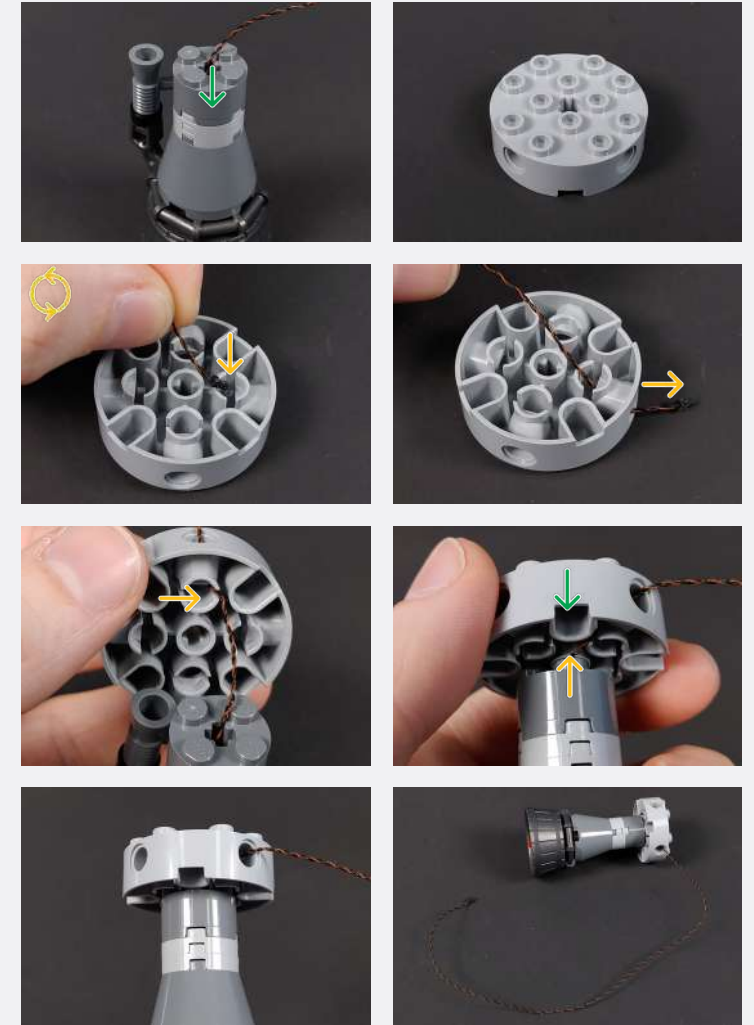
**Legend**   DISCONNECT   CONNECT / RECONNECT   TURN / FLIP   DIRECTIONAL   TWIST / BRAID   POWER ON TEST   NOTE ICON

**4**



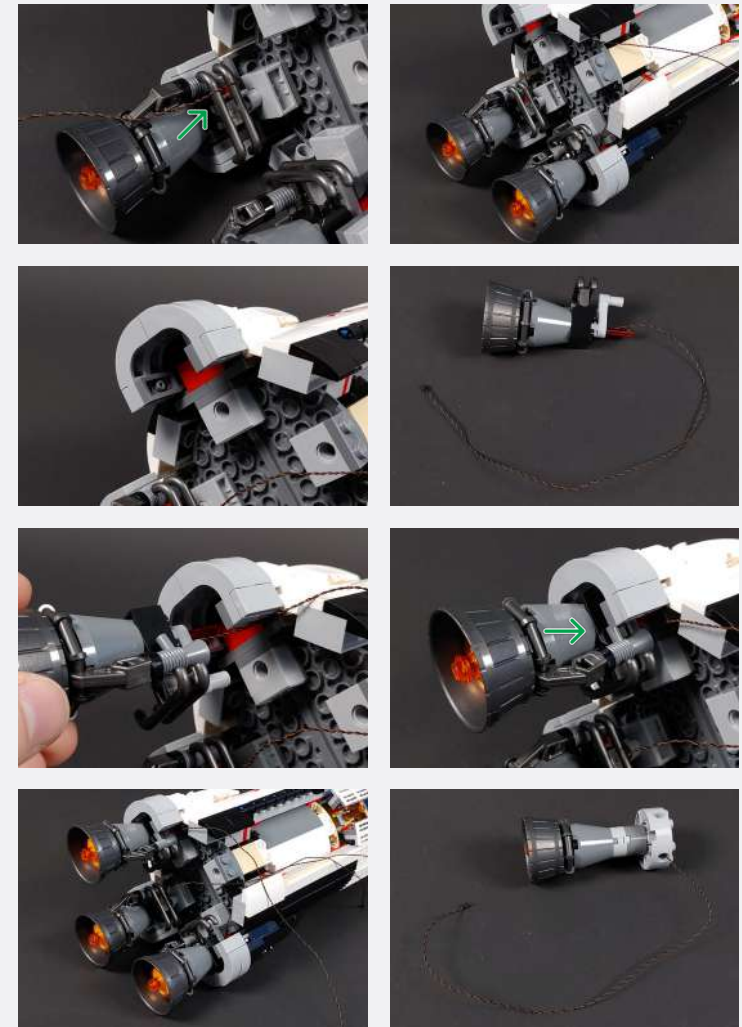
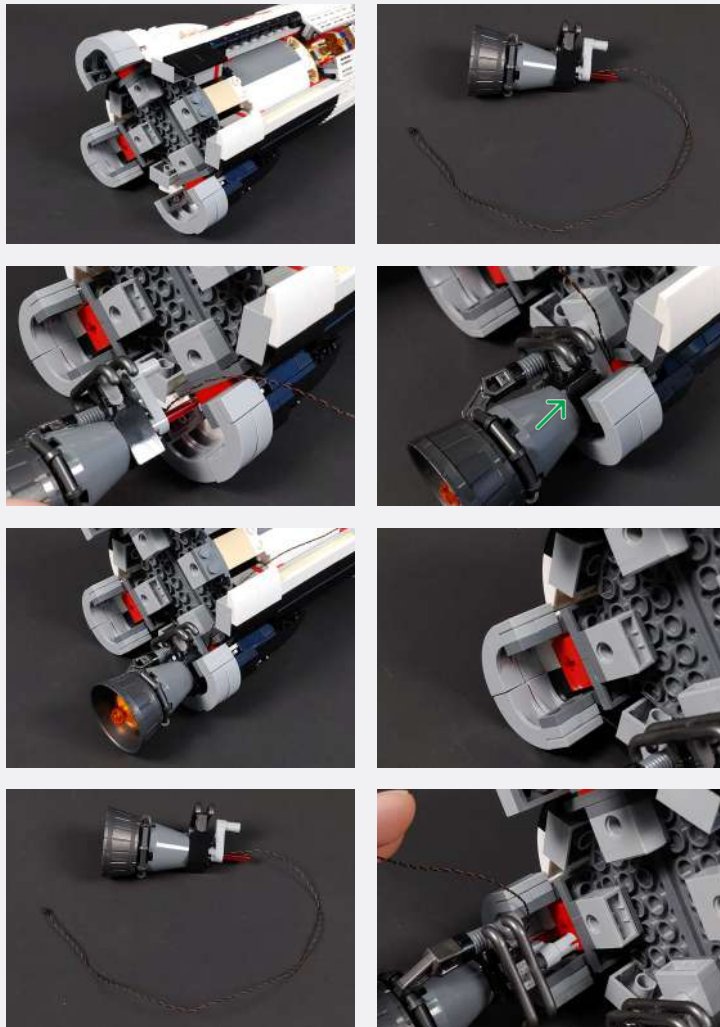
**Legend**   → DISCONNECT   → CONNECT / RECONNECT   ↻ TURN / FLIP   → DIRECTIONAL   ↔ TWIST / BRAID   ✨ POWER ON TEST   📄 NOTE ICON

**5**



**Legend**    → DISCONNECT    → CONNECT / RECONNECT    ↻ TURN / FLIP    → DIRECTIONAL    ↻ TWIST / BRAID    ✨ POWER ON TEST    📝 NOTE ICON

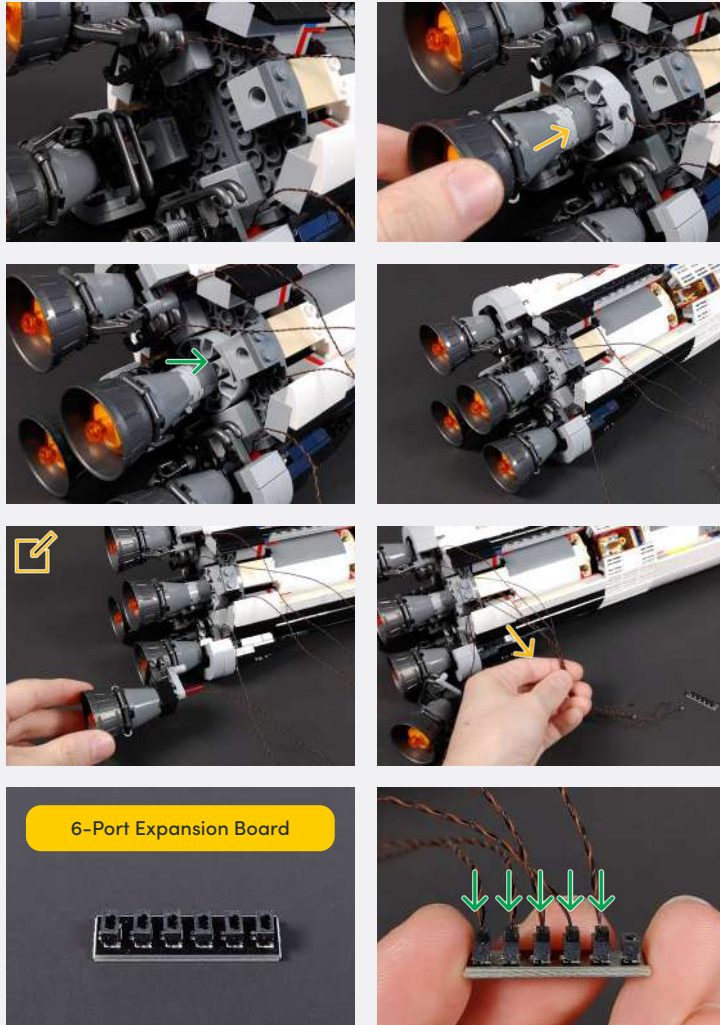
6



**Legend**

- DISCONNECT
- CONNECT / RECONNECT
- ↻ TURN / FLIP
- DIRECTIONAL
- ↔ TWIST / BRAID
- ✳ POWER ON TEST
- 📝 NOTE ICON



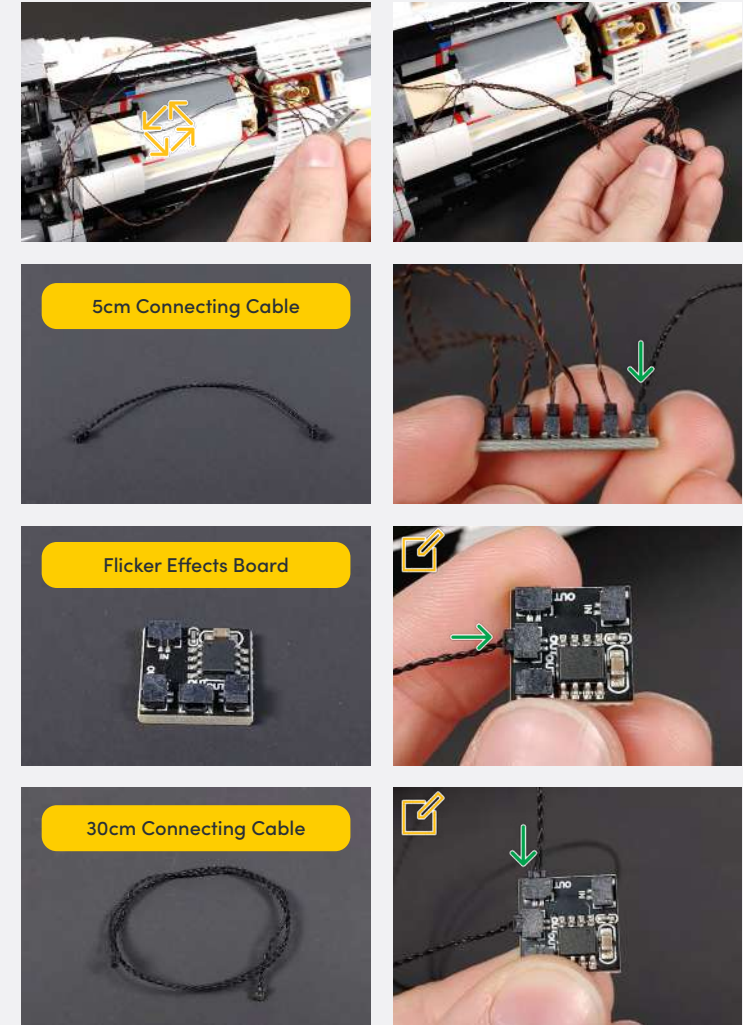
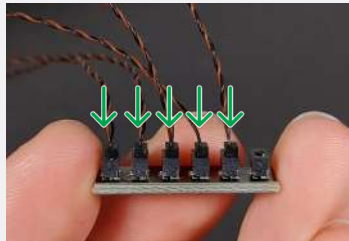


7



Place the last booster close to where it needs to connect but don't connect it yet

6-Port Expansion Board



5cm Connecting Cable

Flicker Effects Board

30cm Connecting Cable

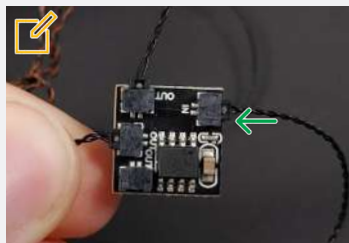
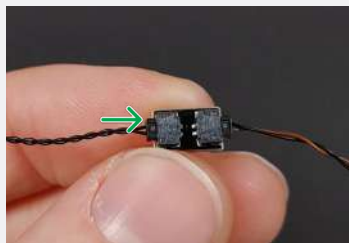
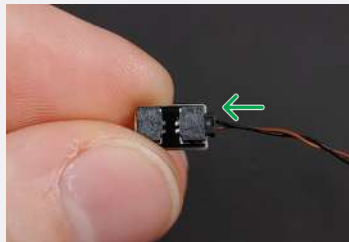
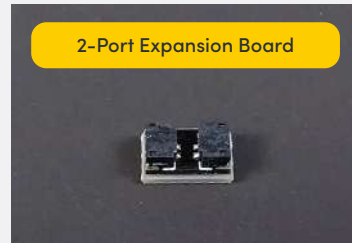
Plug the 5cm Connecting Cable into the "OUT" port of the Flicker Effects Board

Plug the 30cm Connecting Cable into the "OUT" port of the Flicker Effects Board

**Legend**    → DISCONNECT    → CONNECT / RECONNECT    ↻ TURN / FLIP    → DIRECTIONAL    ↻ TWIST / BRAID    ✨ POWER ON TEST    📝 NOTE ICON

📌 If you experience any issues with the lights not working and suspect an issue with a component, please try a different port on the expansion board to verify where the fault lies (with the light or expansion board). To correct any issues with expansion board ports, please view the section addressing expansion board issues in our troubleshooting section.

8

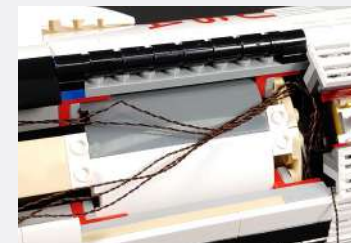


📌 Plug the 15cm Connecting Cable into the "IN" port of the Flicker Effects Board

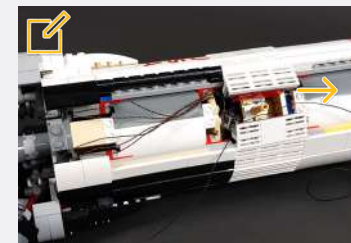
📌 Connect the other end to a 5V USB Power Bank, 5V USB Wall Adaptor, or USB to AA Battery Pack (sold separately)



9



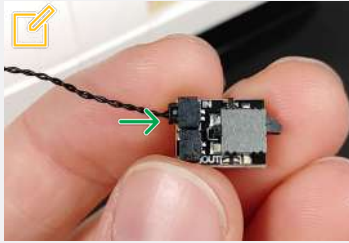
📌 Leave the 30cm Connecting Cable coming out from the hole to use in the next step



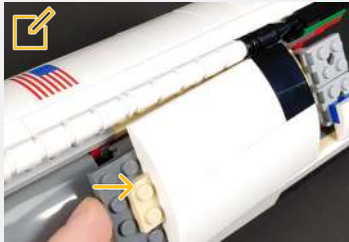
**Legend**

- DISCONNECT
- CONNECT / RECONNECT
- TURN / FLIP
- DIRECTIONAL
- TWIST / BRAID
- POWER ON TEST
- NOTE ICON

✍ Plug the 30cm Connecting Cable into the "IN" port of the NC Push Board

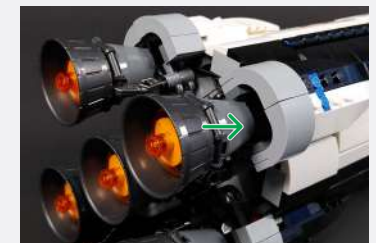
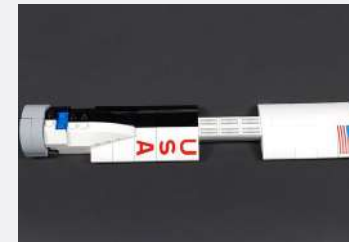
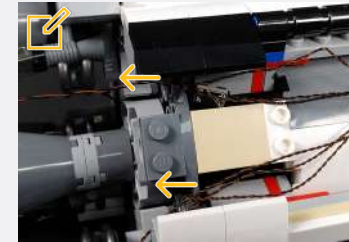
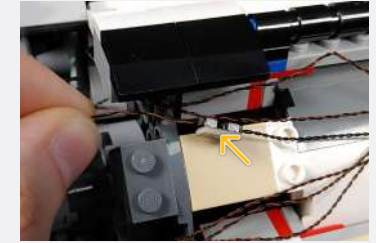
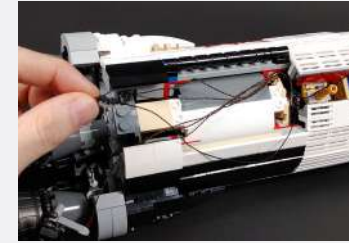


✍ Lightly lift the panel to get the cable underneath and drop back down



# 10

✍ Run the 2-Port Expansion Board cable down the side and place it just inside the cover. Run the cables down either side.



## Legend

→ DISCONNECT

→ CONNECT / RECONNECT

↻ TURN / FLIP

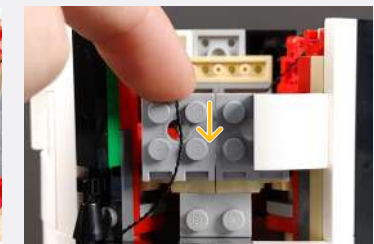
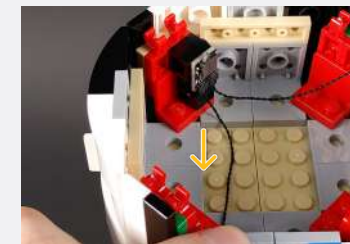
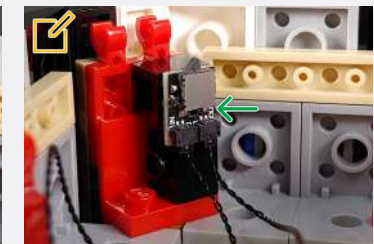
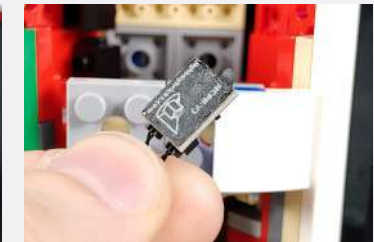
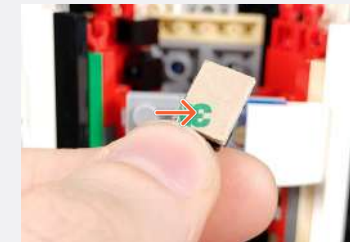
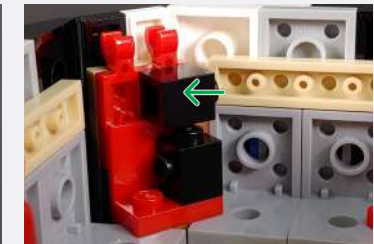
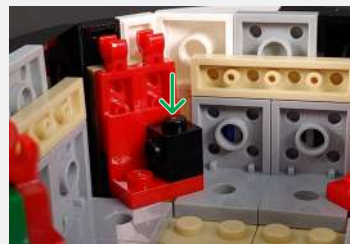
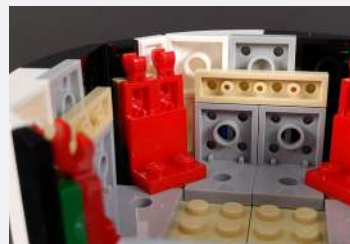
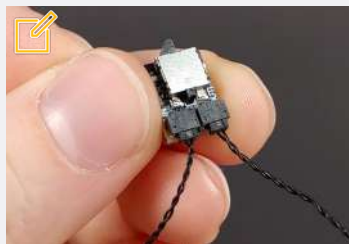
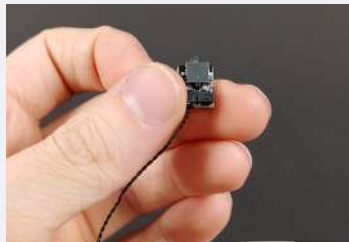
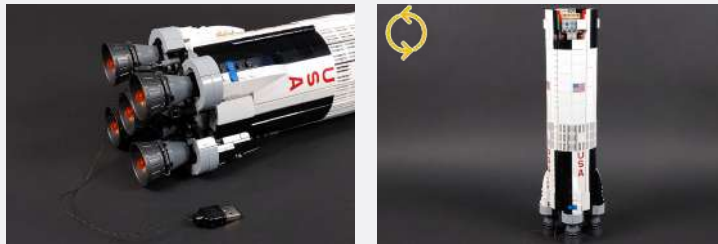
→ DIRECTIONAL

↻ TWIST / BRAID

✳ POWER ON TEST

✍ NOTE ICON

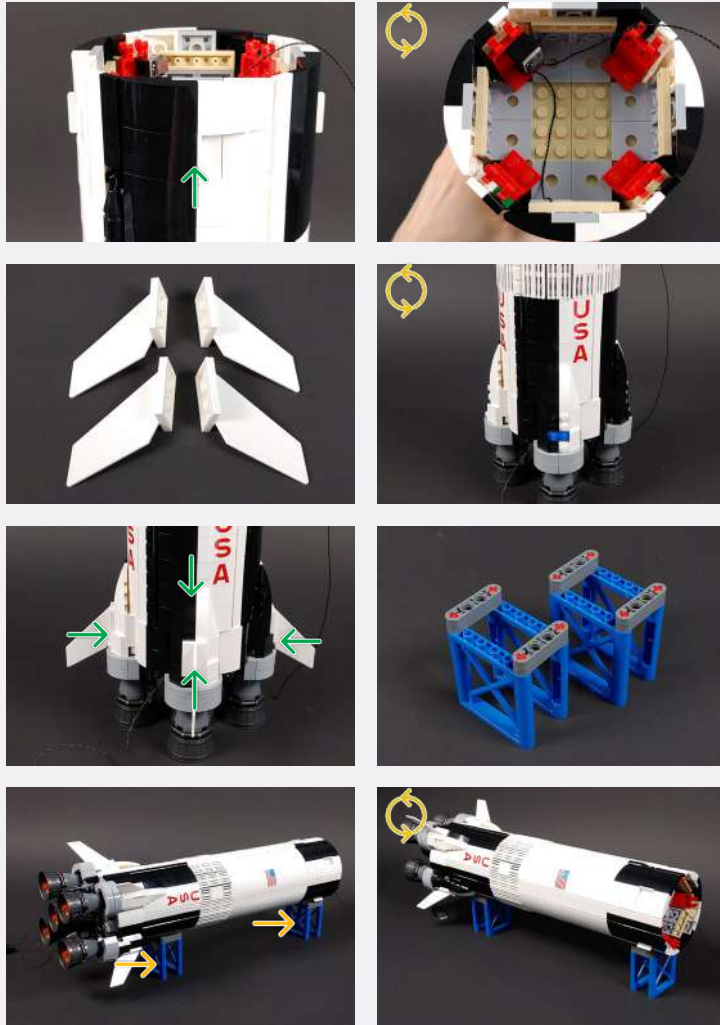
11



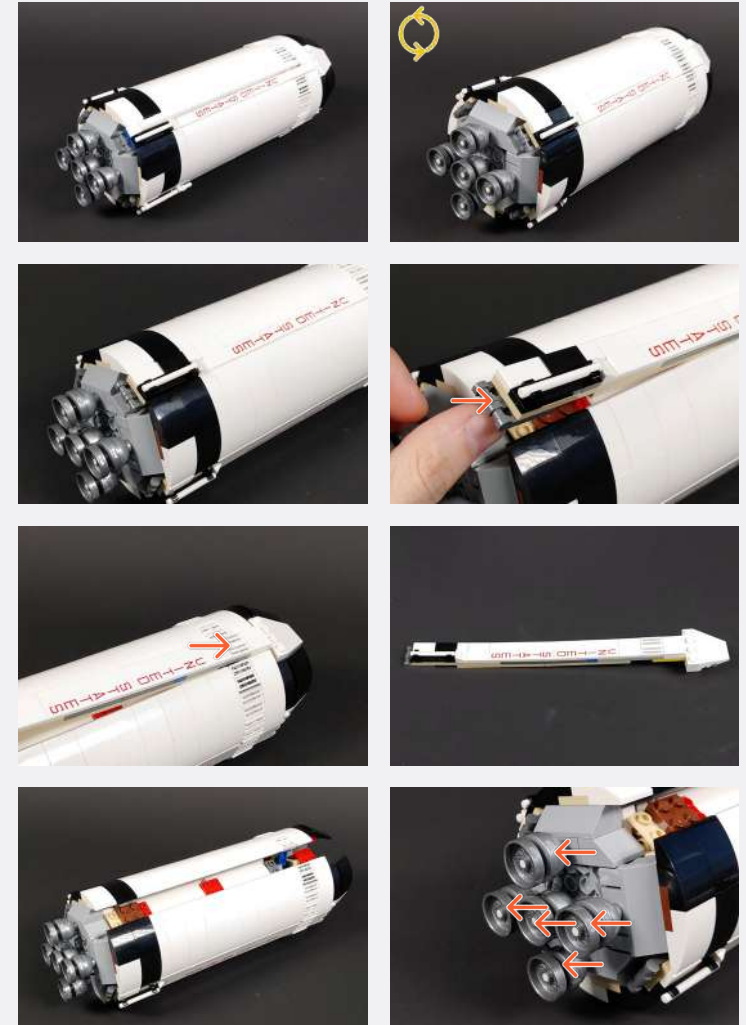
Stick on the NC Push Board so the edge lines up with the top of the higher brick, and the bottom edge sits on the lower brick

Legend → DISCONNECT → CONNECT / RECONNECT ↻ TURN / FLIP → DIRECTIONAL ↺ TWIST / BRAID \* POWER ON TEST 📝 NOTE ICON

**12**



**13**



**Legend**

- DISCONNECT
- CONNECT / RECONNECT
- TURN / FLIP
- DIRECTIONAL
- TWIST / BRAID
- POWER ON TEST
- NOTE ICON

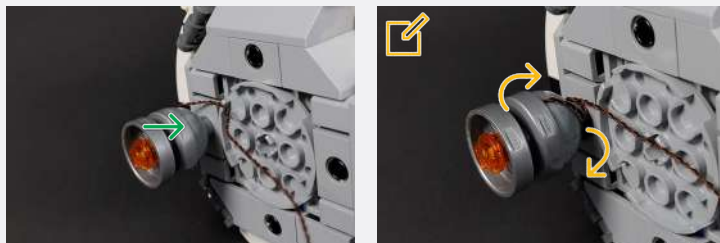
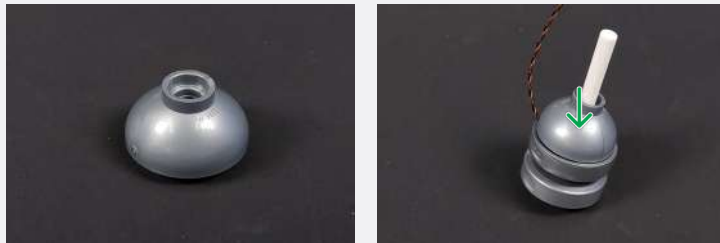
13



Push the bar in until it will not fall out on its own

Legend

- DISCONNECT
- CONNECT / RECONNECT
- TURN / FLIP
- DIRECTIONAL
- TWIST / BRAID
- POWER ON TEST
- NOTE ICON

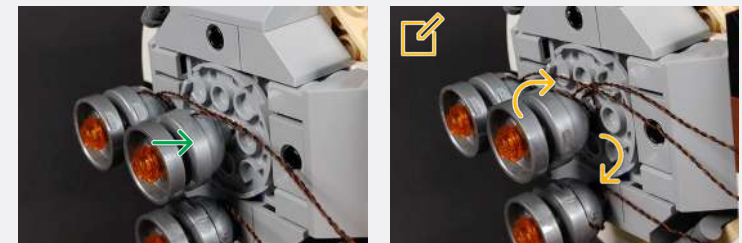
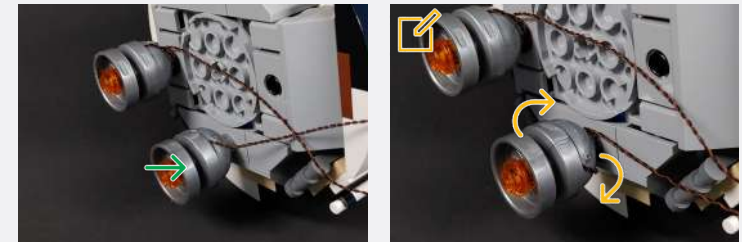


14

Wrap the cable around the booster 2 times

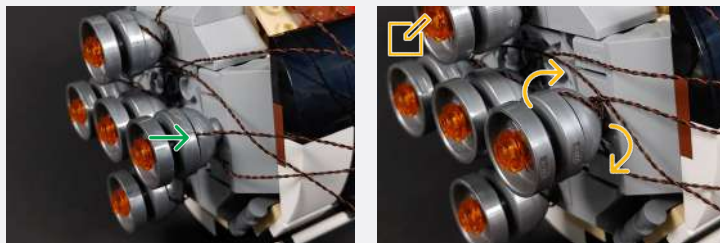
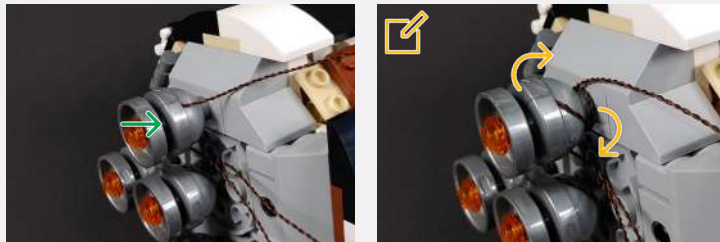
Wrap the cable around the booster 2 times

Wrap the cable around the booster 2 times



Legend

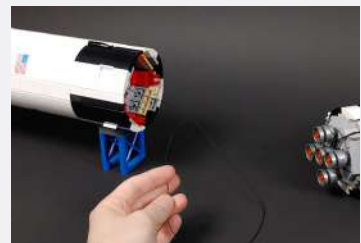
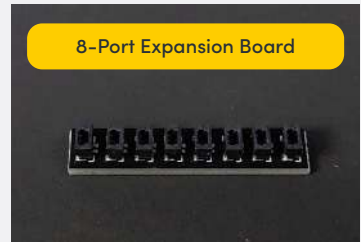
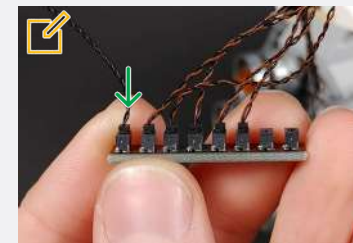
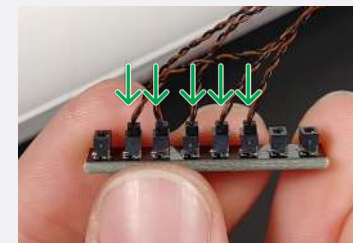
- DISCONNECT
- CONNECT / RECONNECT
- TURN / FLIP
- DIRECTIONAL
- TWIST / BRAID
- POWER ON TEST
- NOTE ICON



Wrap the cable around the booster 2 times

Wrap the cable around the booster 2 times

# 15



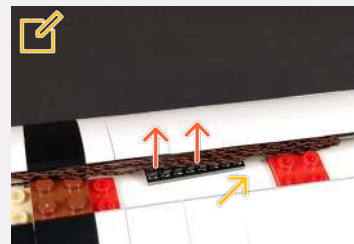
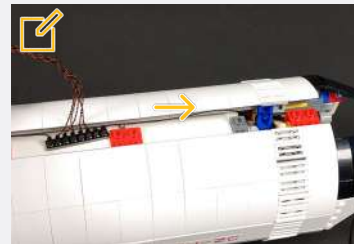
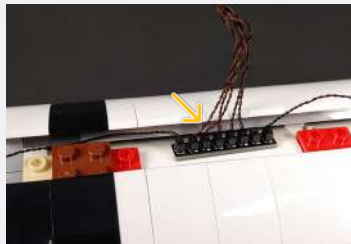
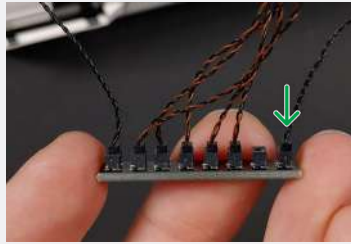
Plug in the 50cm Connecting Cable from the other bottom rocket section

## Legend

- DISCONNECT
- CONNECT / RECONNECT
- TURN / FLIP
- DIRECTIONAL
- TWIST / BRAID
- POWER ON TEST
- NOTE ICON



If you experience any issues with the lights not working and suspect an issue with a component, please try a different port on the expansion board to verify where the fault lies (with the light or expansion board). To correct any issues with expansion board ports, please view the section addressing expansion board issues in our troubleshooting section.

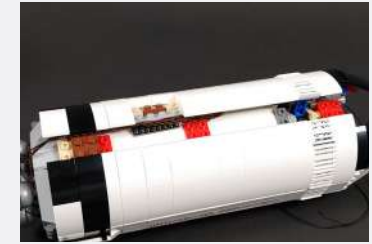


Run the 50cm Connecting Cable out of the top. Run the other cables along the side.

Place the Expansion Board in the location first, then fold the cables alongside it.

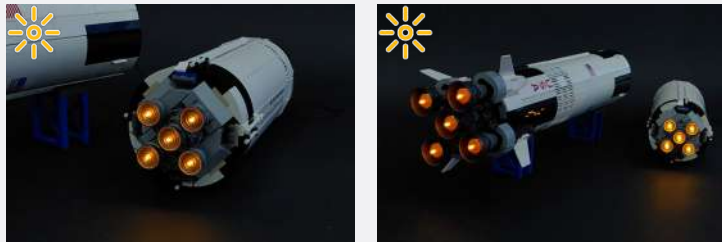
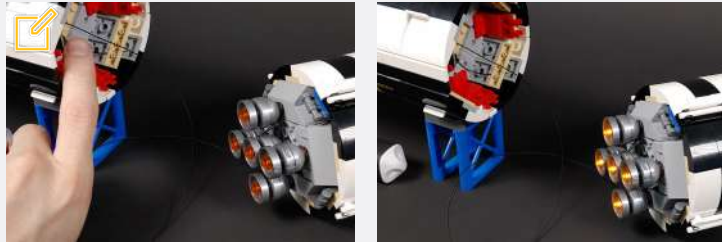
Reconnect the panel with care to not squish the cables. Check the opening if the plugs are safe

Connect the other end to a 5V USB Power Bank, 5V USB Wall Adaptor, or USB to AA Battery Pack (sold separately)



**Legend**   DISCONNECT   CONNECT / RECONNECT   TURN / FLIP   DIRECTIONAL   TWIST / BRAID   POWER ON TEST   NOTE ICON

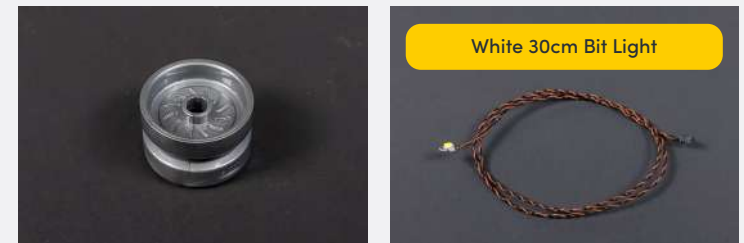
✎ Test the NO Push Board by pressing the switch and the middle rocket will turn off



**16**



**17**



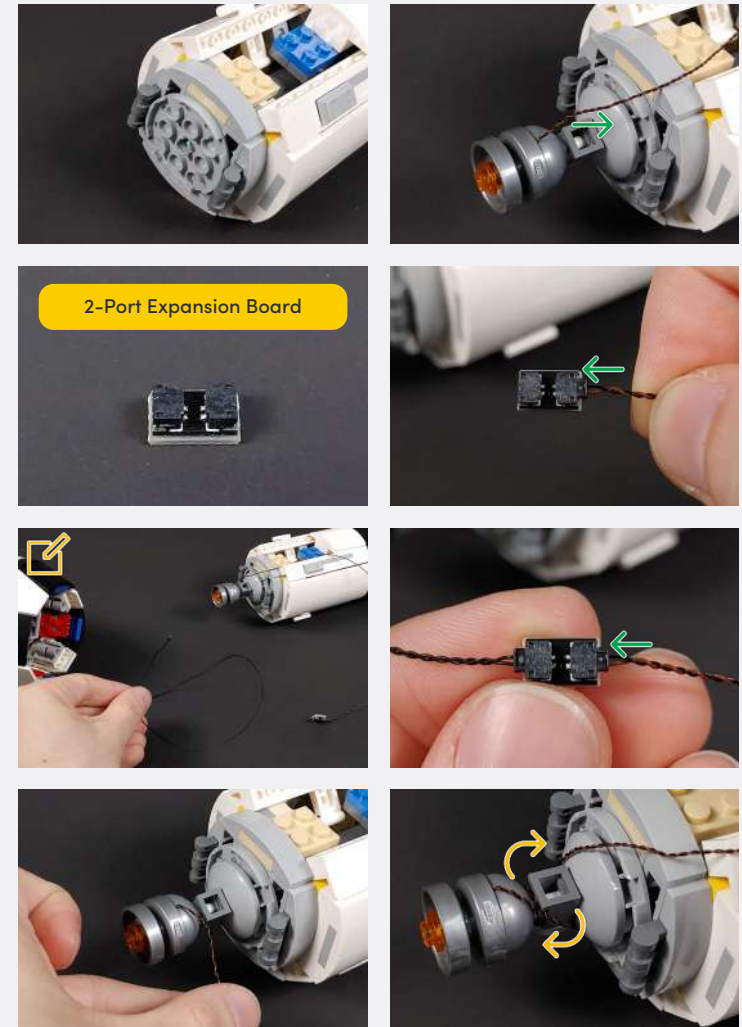
White 30cm Bit Light

**Legend** → DISCONNECT → CONNECT / RECONNECT ↻ TURN / FLIP → DIRECTIONAL ↻ TWIST / BRAID ✨ POWER ON TEST ✎ NOTE ICON



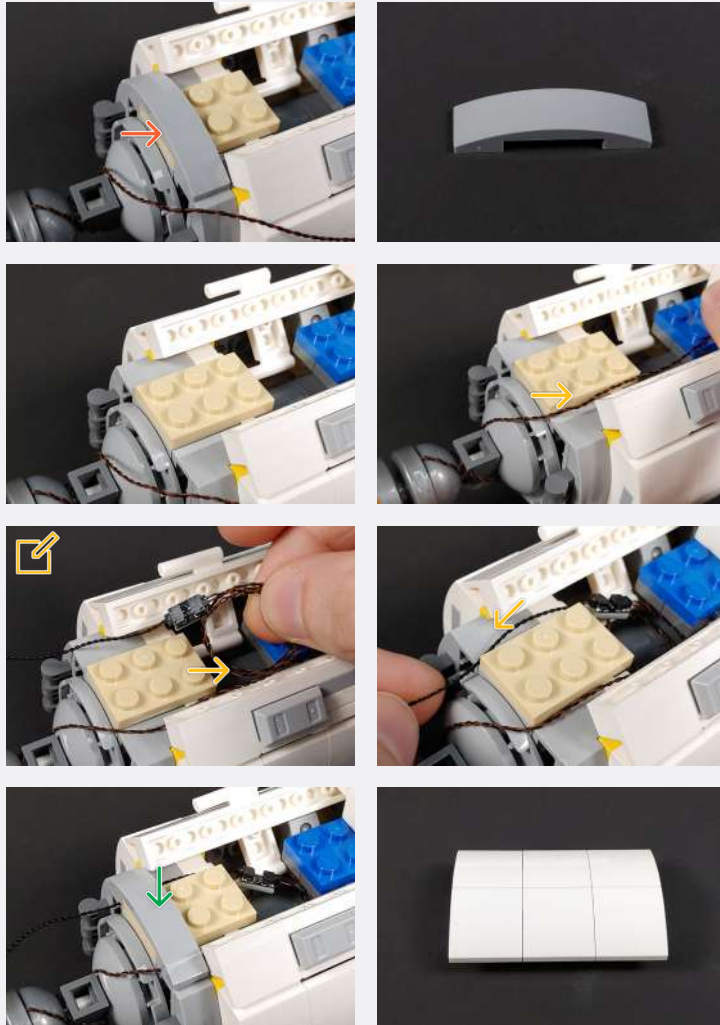
**18**

✂ Plug the 50cm Conneting Cable from the middle rocket into the 2-Port Expansion Board



**Legend** → DISCONNECT → CONNECT / RECONNECT ↻ TURN / FLIP → DIRECTIONAL ↺ TWIST / BRAID ✨ POWER ON TEST 📝 NOTE ICON

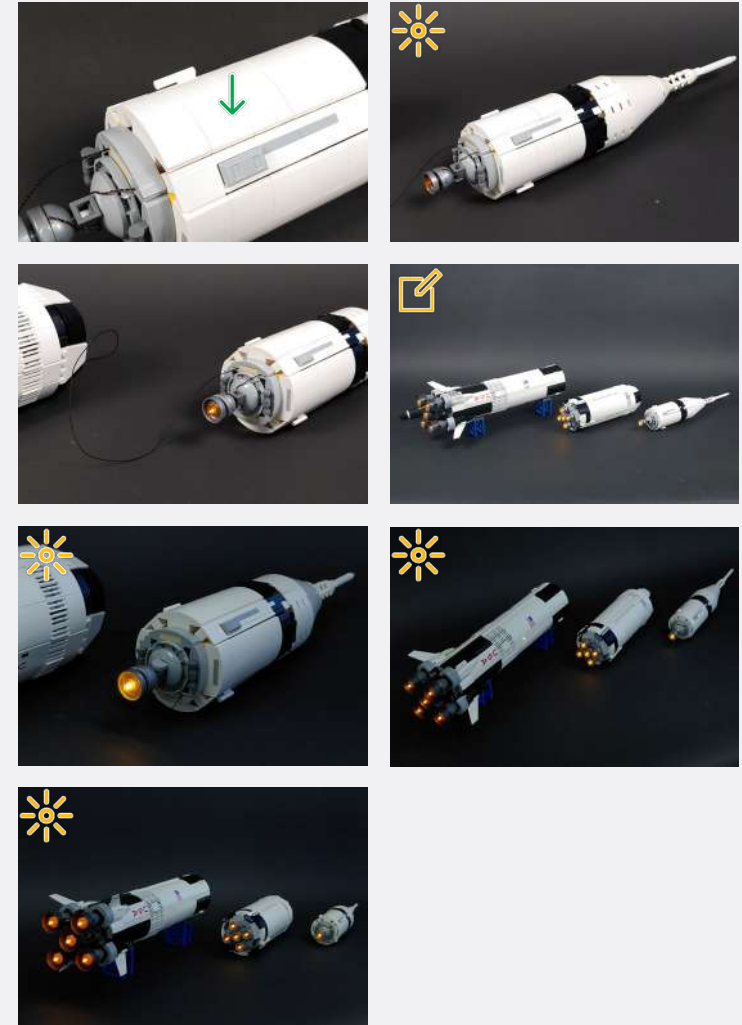
If you experience any issues with the lights not working and suspect an issue with a component, please try a different port on the expansion board to verify where the fault lies (with the light or expansion board). To correct any issues with expansion board ports, please view the section addressing expansion board issues in our troubleshooting section.



Wrap the cable and the 2-Port Expansion Board and place it in the hole

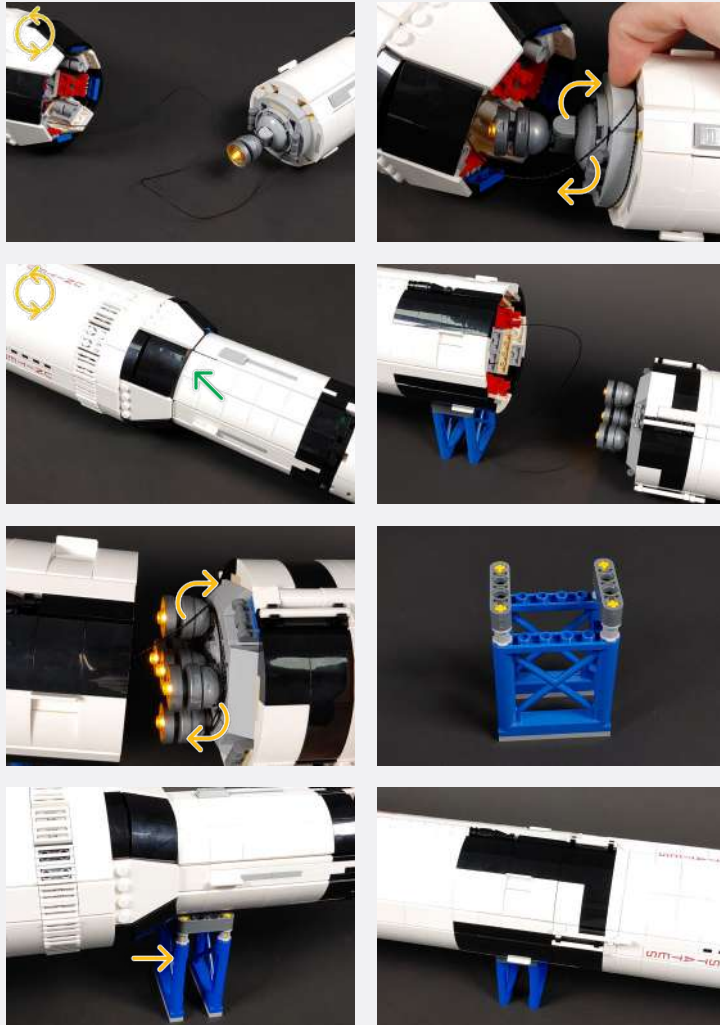
Connect the other end to a 5V USB Power Bank, 5V USB Wall Adaptor, or USB to AA Battery Pack (sold separately)

Rotate the rocket sections to have the cable coming out from the bottom back



**Legend**   DISCONNECT   CONNECT / RECONNECT   TURN / FLIP   DIRECTIONAL   TWIST / BRAID   POWER ON TEST   NOTE ICON

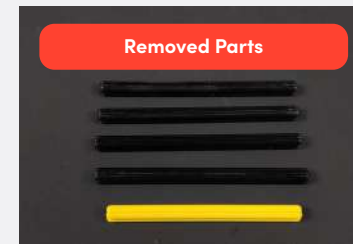
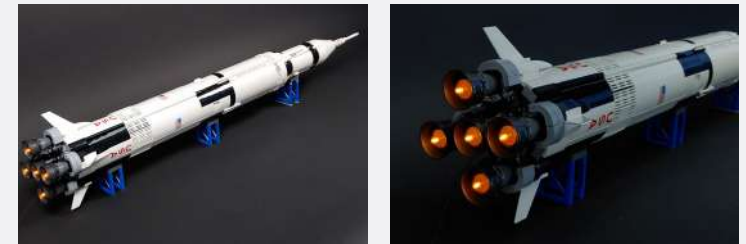
## 19



Remove the panel to see if the NC Push Board is functioning correctly, as the middle and top boosters should be off when joined



You should have these parts left over that were removed from the LEGO set



**Legend**
→ DISCONNECT
→ CONNECT / RECONNECT
↻ TURN / FLIP
→ DIRECTIONAL
↻ TWIST / BRAID
✳ POWER ON TEST
📝 NOTE ICON

## FINAL PRODUCT

This finally completes installation of the Light My Bricks  
LEGO NASA Apollo Saturn V 92176 Light Kit.





## TROUBLESHOOTING

Light My Bricks lighting kits contain individual components that are very small and can be easily damaged if not handled correctly.

To prevent unnecessary damage to components, we highly recommend that the User Guide section, **“Important things to note”** is read carefully. Follow the handling procedures in the User Guide to help prevent faults and damages to your Light My Bricks components.

If you are experiencing issues with your Light My Bricks set, watch our troubleshooting video [here](#) or read on for a list of common causes to help you troubleshoot.

## Troubleshooting

**Firstly, ensure that the batteries have power using a battery charge gauge.**

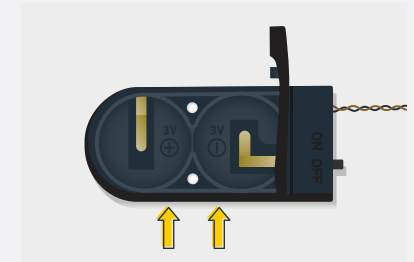
**If the batteries have no power, replace the batteries.**

**If the batteries still have power, check to see if the batteries have been inserted correctly into the battery pack.**

### Check For CR2032 Batteries Using The Flat Battery Pack

Inside the battery pack is a symbol indicating which side the (round) CR2032 battery should be inserted. Check that the “+” side of the battery pack has the battery with the “+” symbol facing downwards.

On the opposite side, the “-” side of the battery pack should have the battery flipped upside down, that is the “+” symbol facing upwards.

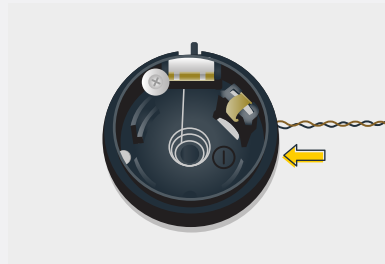




## Troubleshooting

### Check For Cr2032 Batteries Using The Round Battery Pack

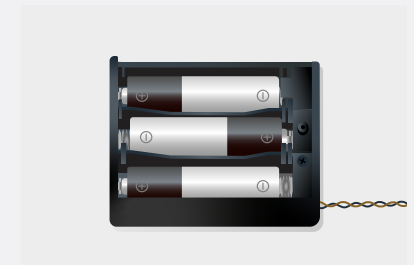
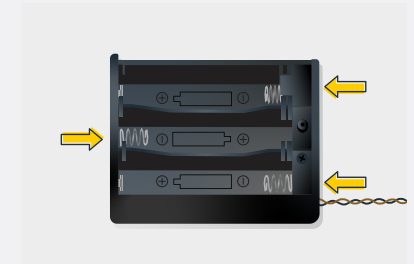
Inside the battery pack is a symbol indicating which side the (round) CR2032 battery should be inserted. In this case, for the stacked battery pack, ensure that BOTH batteries have the “+” symbol facing upwards.



### Check for AA batteries using the AA battery pack

Inside the battery pack are symbols indicating which direction the AA battery should be inserted. The flat side of the battery should be paired with the spring side of the battery pack.

If the batteries have been installed correctly and your kit still isn't operating correctly, the next step is to check the wiring.



## Troubleshooting

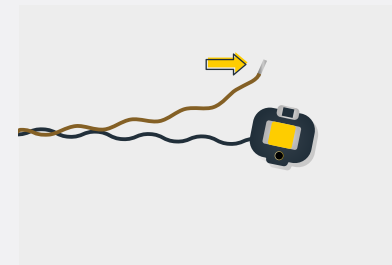
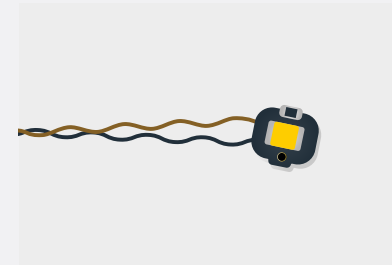
### Check Your Wires

In order for Light My Bricks components to fit in between and underneath LEGO® bricks, the components need to be very small. Due to this nature, Light My Bricks components can be easily damaged when not handled correctly.

Be careful when removing unpacked components out of the packaging and ensure not to forcibly pull at the wires as this can damage the soldering that attach the wires to the LEDs.

If the wiring is detached from the LED itself, the light will not operate.

When connecting lights to your LEGO set, check that there are no pinched wires underneath or in between bricks and plates. When the wires are pinched and the exposed wires are touching each other, this can cause a crosswire and the lights to not function correctly.



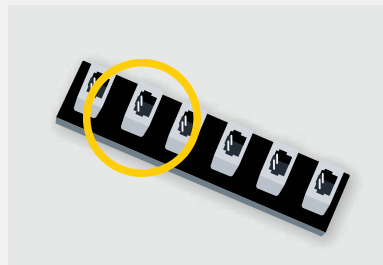
# Troubleshooting

## Check Your Expansion Board Ports/ Strip Light Ports / Effects Board Ports

It is important to note that connectors can only be inserted to the expansion board, strip light, or effects board ports in one direction.

Forcibly inserting connectors in the incorrect direction will result in damaging the pins inside each of the ports on your component board.

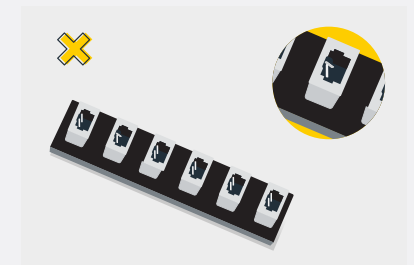
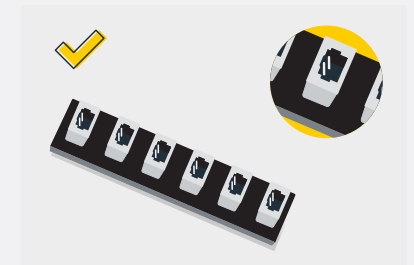
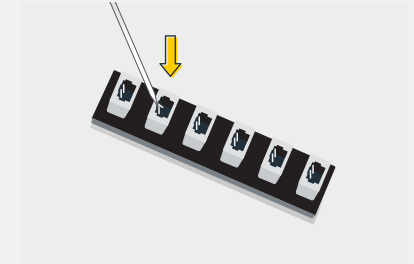
Not only will a light connected to the damaged port not work, but if the pins inside the port are bent to a point they are touching each other, this can result in all other lights in the system to stop working. This is a short circuit.



A short circuit can also result in overheating of the board, cable or batteries. If you suspect a short circuit, **DISCONNECT POWER IMMEDIATELY**. Batteries can fail, catch fire, or even explode if left connected to a short circuit for too long.

If you suspect you have a faulty component due to a bent pin, try the following steps:

If you look carefully inside each of the ports, each port contains 2 small pins that should be straight. You will be able to identify a faulty port if it has any bent pins.





## CONTACT US

If you have an enquiry regarding the online shop, our products or a general enquiry please refer to our Frequently Asked Questions webpage here.

Alternatively, you can contact our Customer Services team by visiting our online support portal here.

[support.lightmybricks.com](https://support.lightmybricks.com)

We thank you for purchasing this product and hope you enjoy!



[lightmybricks.com](http://lightmybricks.com)