



**LIGHT^{MY}
BRICKS**



**LEGO® UCS AT-AT #75313 LIGHT KIT
INSTALLATION GUIDE**

Light My Bricks



LEGO® UCS AT-AT #75313 LIGHT KIT INSTALLATION GUIDE

Hi There!

We're here to help you get started on the LEGO®
UCS AT-AT (75313) Light Kit.

This PDF details the instructions for the LED light kit only. If you are wishing to purchase this product, please [click here](#) to view the product page.

If you run into any issues, please refer to the troubleshooting section towards the end of this guide.

Have fun and enjoy!



PACKAGE CONTENTS:



- 1 x Light My Bricks Lightsaber – Blue
- 2 x Rotating Bit Light 30cm
- 2 x Cool White 30cm Large Bit Light
- 1 x Flashing Red 30cm Bit Light
- 4 x Red 30cm Bit Light
- 2 x Cool White 30cm Bit Light
- 8 x Red 15cm Micro Bit Light *
- 6 x White Strip Light
- 1 x Red Strip Light



- 2 x 2-Port Expansion Board
- 4 x 6-Port Expansion Board*
- 3 x 4-Port Micro Expansion Board*
- 2 x Adhesive Squares



- 1 x Gun Effects Board



- 5 x 5cm Connecting Cable
- 6 x 15cm Connecting Cable
- 2 x 30cm Connecting Cable*
- 2 x 50cm Connecting Cable



- 1 x USB Power Cable
(Power Source not Included)

LEGO PIECES:



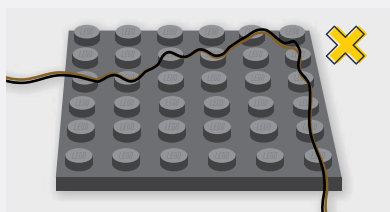
- 2 x Plate 2x4 – Black
- 3 x Plate 1x2 – Trans Red
- 2 x Round Plate 1x1 Open Stud – Light Grey
- 2 x Round Plate 1x1 Open Stud – Black
- 2 x Round Plate 1x1 – Trans Clear
- 1 x Round Plate 1x1 – Trans Red
- 2 x Round Brick 1x1 – Trans Red
- 2 x Round Tile 1x1 – Trans Red
- 2 x Bracket 1x1 – Light Grey
- 1 x Bracket 1x2-1x4 – Light Grey
- 4 x Plate 1x1 Mod Rounded w Handle – Black
- 2 x Arm Skeleton, Bent with Clips (Horizontal Grip) – Black

* Indicates 1 extra component has been included just in case!

Contents

Before You Begin	5
Blueprint	8
Instructions	9
Final Product	42
Troubleshooting	43
Contact	48

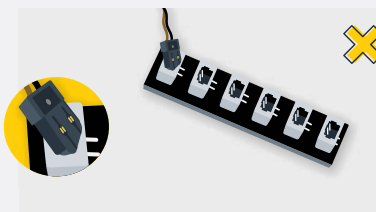
Before You Begin



Laying cables in between and underneath bricks

Cables can fit in between and underneath LEGO® bricks, plates, and tiles providing they are laid correctly between the LEGO® studs. Do NOT forcefully join LEGO® together around cables; instead ensure they are laying comfortably in between each stud.

CAUTION: Forcing LEGO® to connect over a cable can result in damaging the cable and light.



Connecting Cable Connectors To Expansion Boards

Take extra care when inserting connectors to ports of Expansion Boards. Connectors can be inserted only one way. With the expansion board facing up, look for the soldered “=” symbol on the left side of the port. The connector side with the wires exposed should be facing toward the soldered “=” symbol as you insert into the port. If a plug won’t fit easily into a port connector, do not force it.

Incorrectly inserting the connector can result in bent pins inside the port or possible overheating of the expansion board when connected.

Before You Begin



Connecting Cable Connectors To Strip Lights

Take extra care when inserting connectors to ports on the Strip Lights. Connectors can be inserted only one way. With the Strip Light facing up, ensure the side of the connector with the wires exposed is facing down. If a plug won't fit easily into a port connector, don't force it. Doing so will damage the plug and the connector.



Connecting Micro Cable Connectors To Micro Expansion Board Ports

Take extra care when inserting the micro connectors to micro ports of Micro Expansion Boards. Connecting Micro Bit Lights to Micro Expansion Boards is similar to connecting lights and cables to Strip Lights. With the expansion board facing up, ensure the side of the connector with the wires exposed is facing down. If a plug won't fit easily into a port connector, do not force it. Use your fingernail to push the plastic part of the connector to the micro port.

Before You Begin

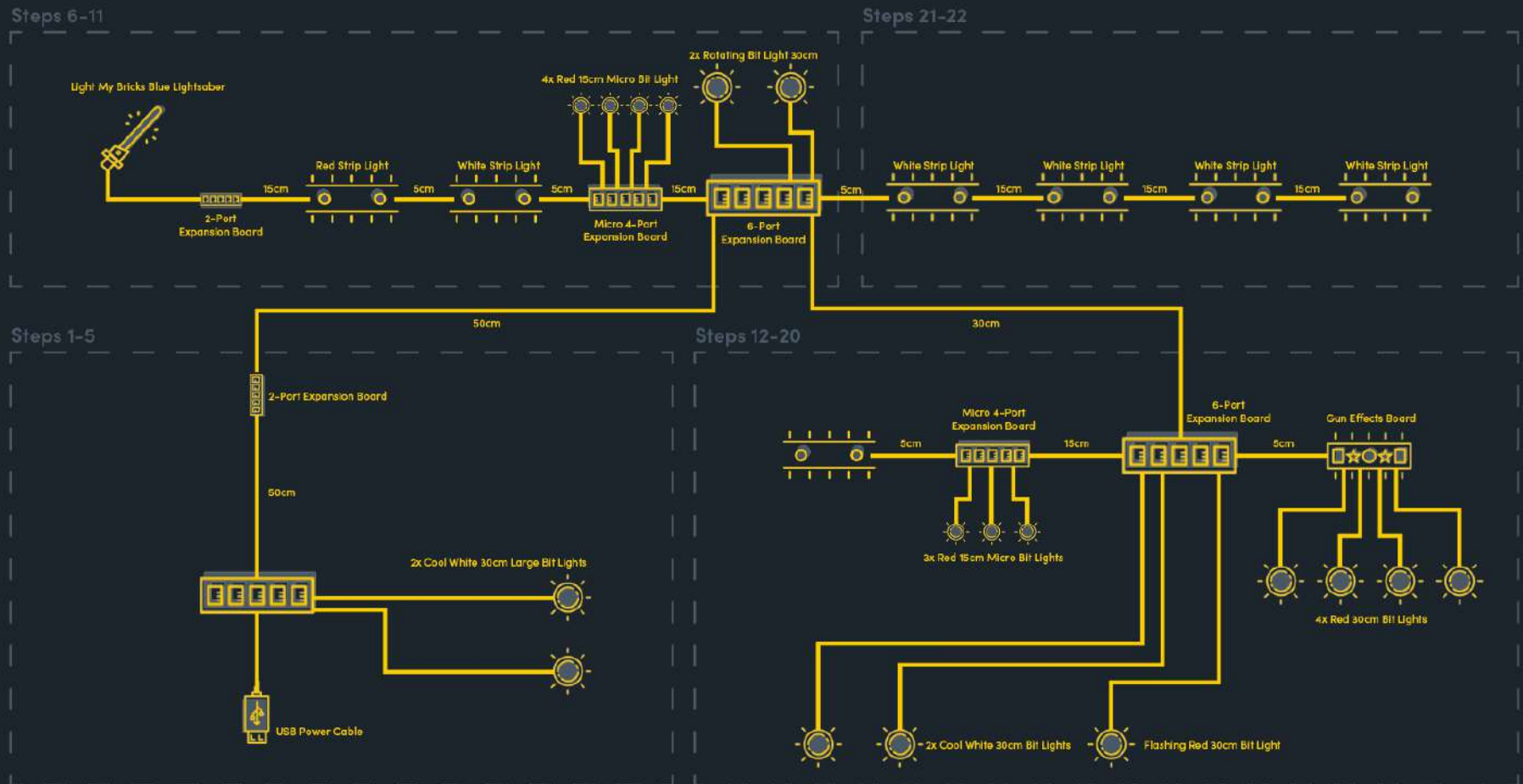
Installing Bit Lights Under Lego® Bricks And Plates

When installing Bit Lights under LEGO® pieces, ensure they are placed the correct way up (Yellow LED component exposed). You can either place them directly on top of LEGO® studs or in between.





BLUEPRINT

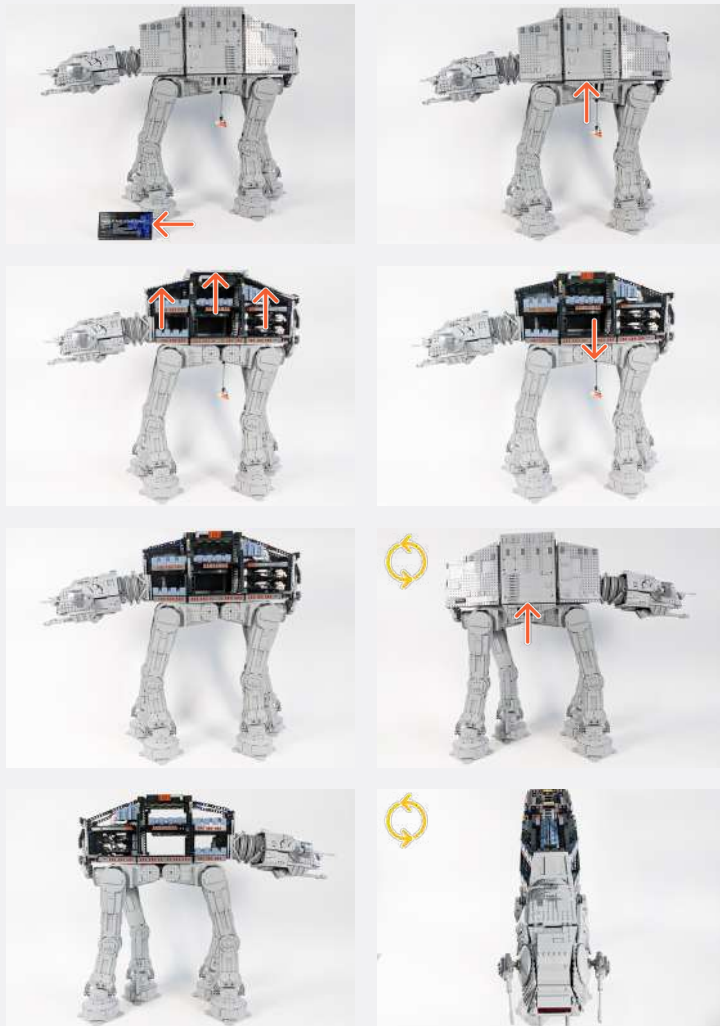




INSTRUCTIONS

To ensure a smooth installation of your light kit, please read and follow each step carefully. If you run into any issues, please refer to the online troubleshooting guide.

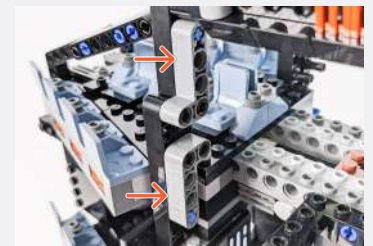
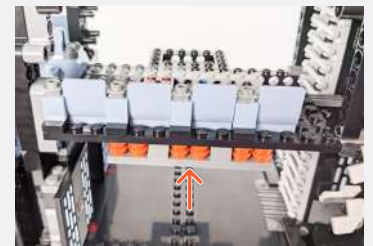
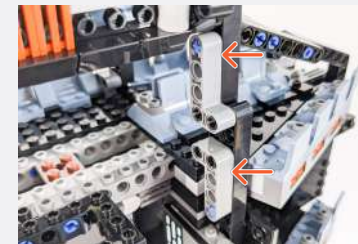
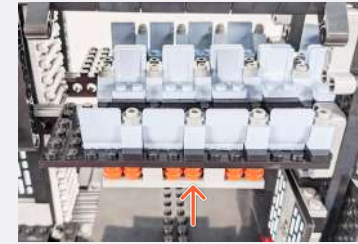
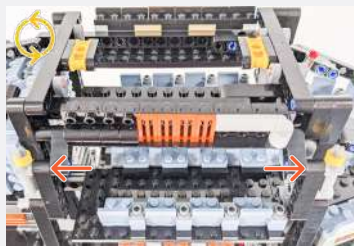
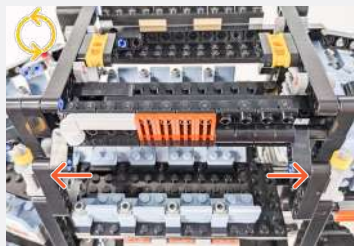
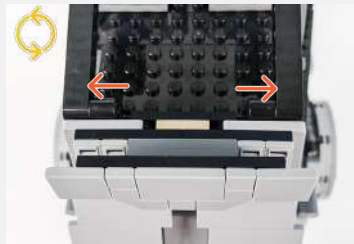
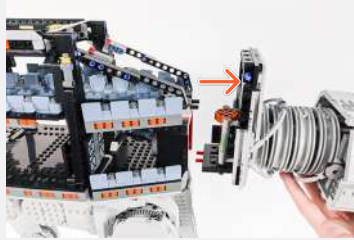
1



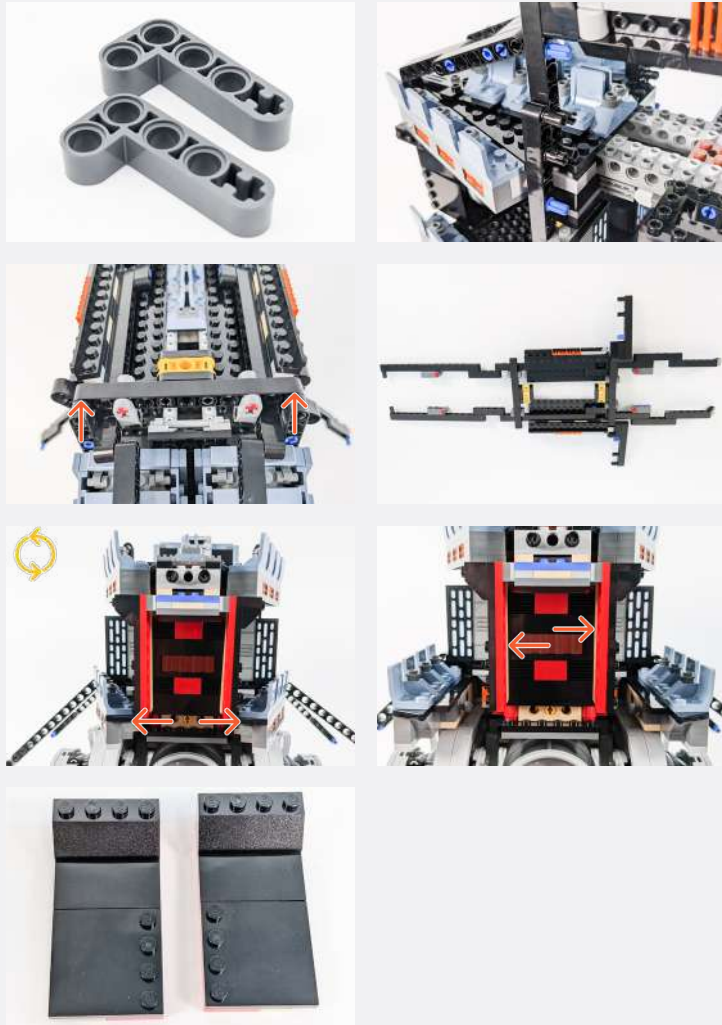
Make sure to support the head with your hand when removing the red axle.

Legend DISCONNECT CONNECT / RECONNECT TURN / FLIP DIRECTIONAL TWIST / BRAID POWER ON TEST NOTE ICON

2



Legend → DISCONNECT → CONNECT / RECONNECT ↻ TURN / FLIP → DIRECTIONAL ↻ TWIST / BRAID ✨ POWER ON TEST 📝 NOTE ICON



3



Legend → DISCONNECT → CONNECT / RECONNECT ↻ TURN / FLIP → DIRECTIONAL ↺ TWIST / BRAID * POWER ON TEST 📝 NOTE ICON

4



2 x Plate 2x4 - Black



Cool White 30cm Large Bit Light



Black Round Plate 1x1 w/ Open Stud



Black 1x1 Plate Modified Plate Rounded w/ Handle



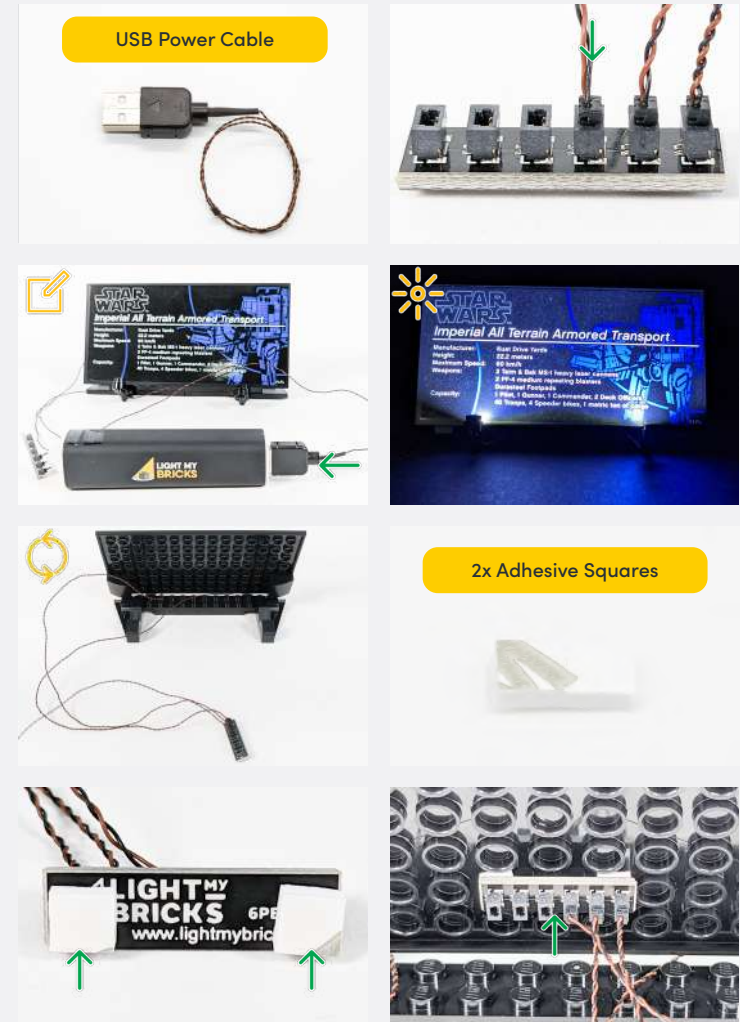
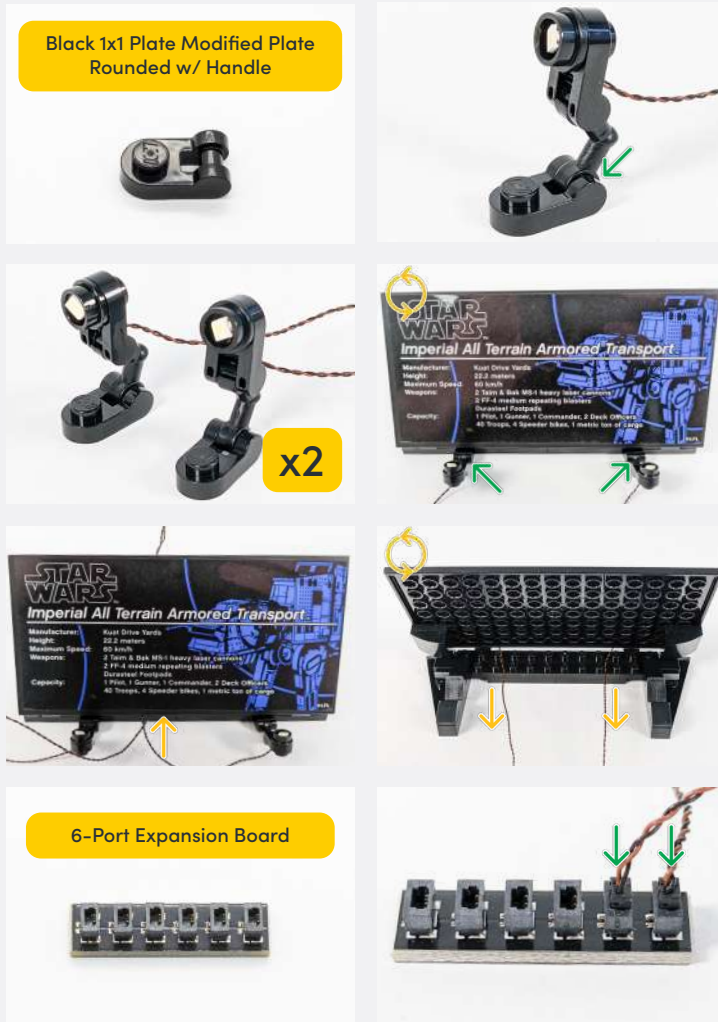
Black Arm Skeleton, Bent w Clips (Horizontal Grips)



Legend

- DISCONNECT
- CONNECT / RECONNECT
- TURN / FLIP
- DIRECTIONAL
- TWIST / BRAID
- POWER ON TEST
- NOTE ICON

📌 If you experience any issues with the lights not working and suspect an issue with a component, please try a different port on the expansion board to verify where the fault lies (with the light or expansion board). To correct any issues with expansion board ports, please view the section addressing expansion board issues in our troubleshooting section.



5

Legend → DISCONNECT → CONNECT / RECONNECT ↻ TURN / FLIP → DIRECTIONAL ↻ TWIST / BRAID ✨ POWER ON TEST 📌 NOTE ICON

Please twist the two Large Bit Light cables.



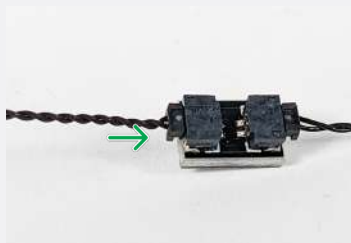
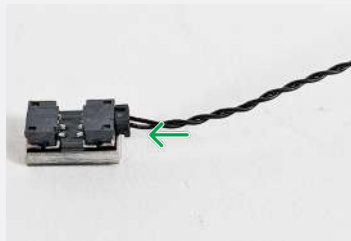
50cm Connecting Cable



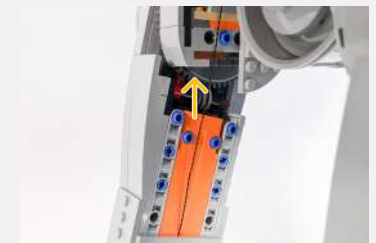
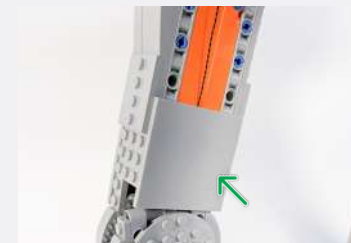
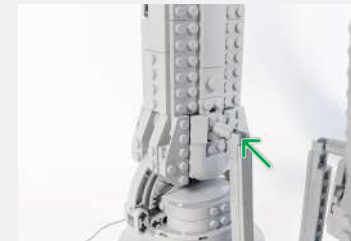
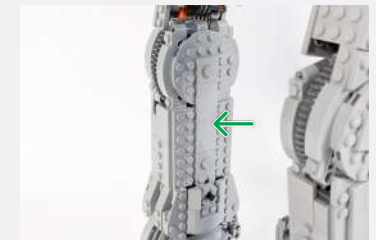
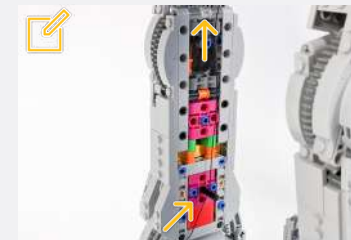
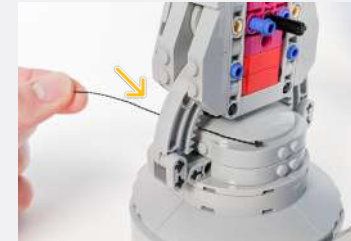
2-Port Expansion Board



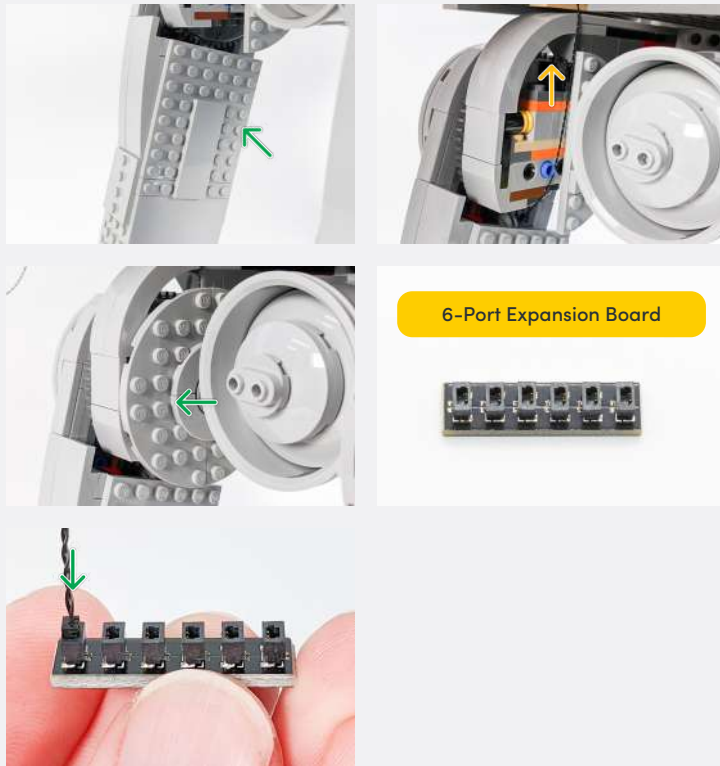
50cm Connecting Cable



When pulling the 50cm Connecting Cable up the leg, ensure the 2-Port Expansion Board remains located at the ankle.



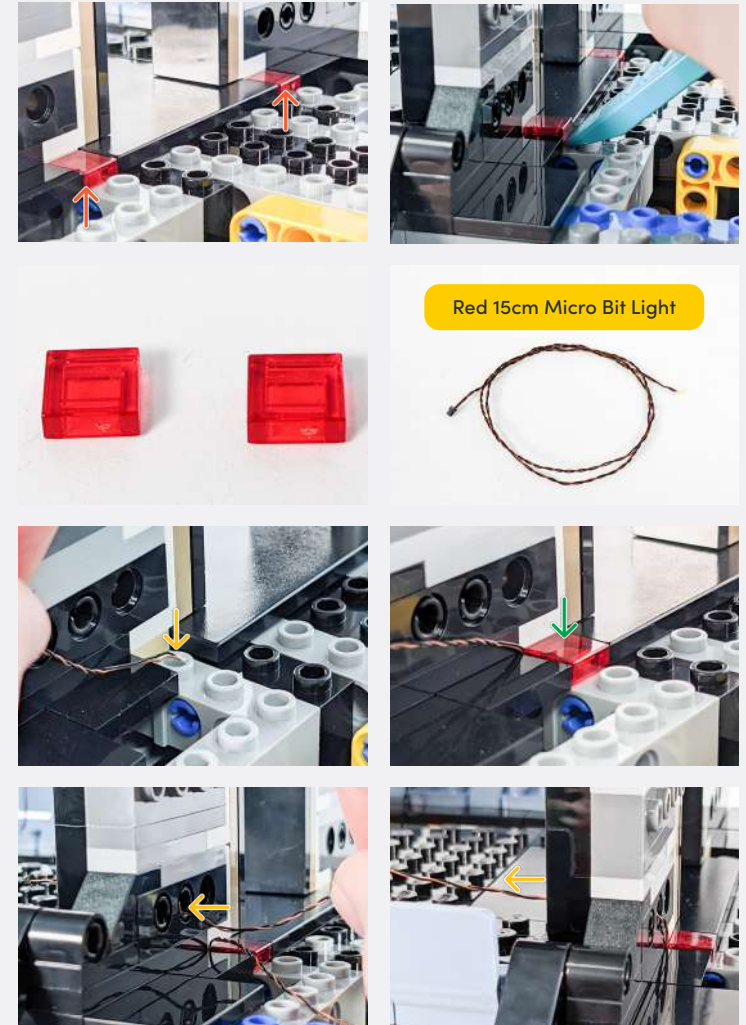
Legend DISCONNECT CONNECT / RECONNECT TURN / FLIP DIRECTIONAL TWIST / BRAID POWER ON TEST NOTE ICON



6



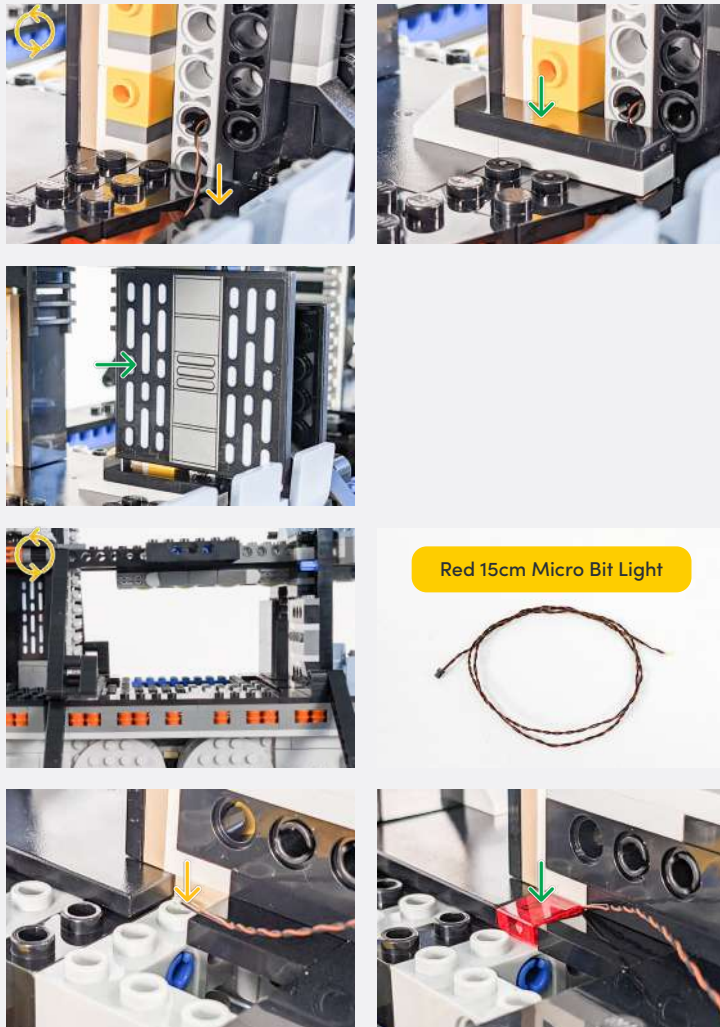
Legend → DISCONNECT → CONNECT / RECONNECT ↻ TURN / FLIP → DIRECTIONAL ↻ TWIST / BRAID * POWER ON TEST 📝 NOTE ICON



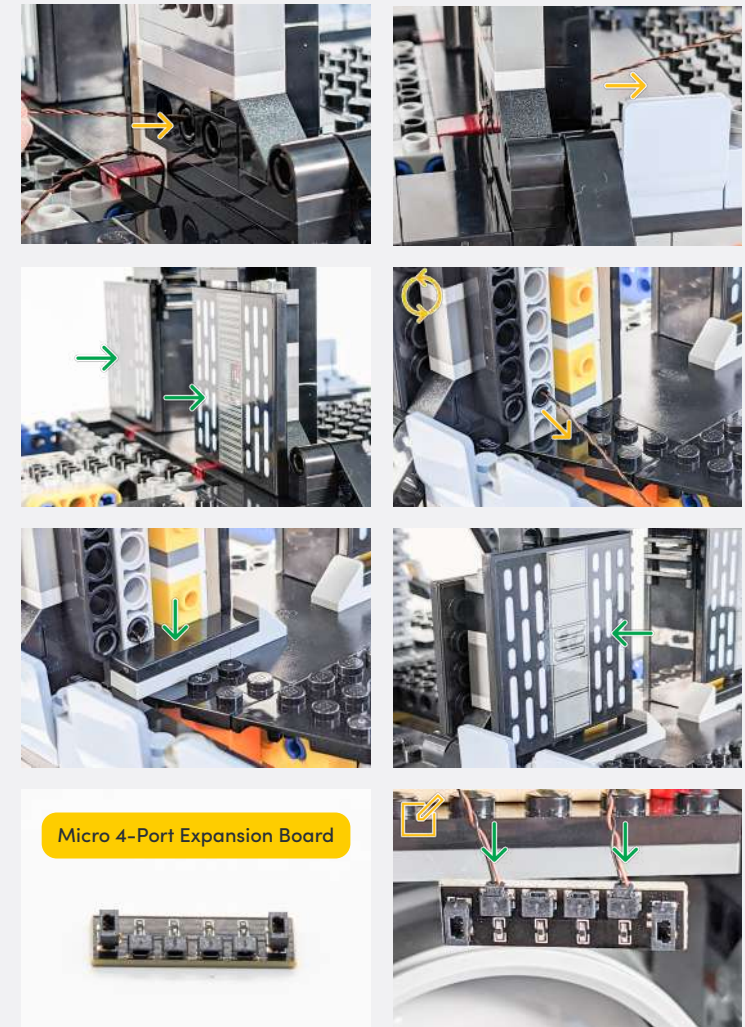
Red 15cm Micro Bit Light

Legend → DISCONNECT → CONNECT / RECONNECT ↻ TURN / FLIP → DIRECTIONAL ↻ TWIST / BRAID ✨ POWER ON TEST 📝 NOTE ICON

7



Red 15cm Micro Bit Light



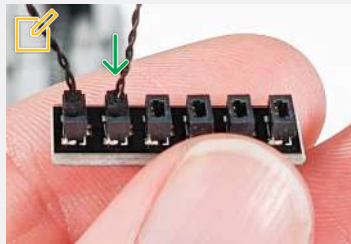
Micro 4-Port Expansion Board



Connect the two Micro Bit Lights from this step and step 6 to the Micro 4-Port Expansion Board.

Legend
→ DISCONNECT
→ CONNECT / RECONNECT
↻ TURN / FLIP
→ DIRECTIONAL
↻ TWIST / BRAID
✳ POWER ON TEST
📌 NOTE ICON

☑ Connect one end of the 15cm Connecting Cable to the Micro 4-Port Expansion Board from step 7 and the other end to the 6-Port Expansion Board from step 5.



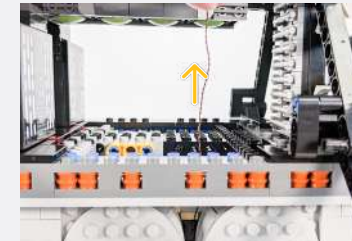
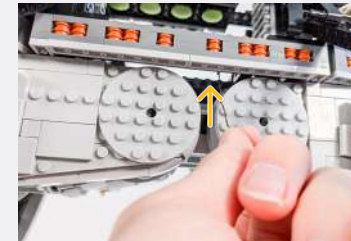
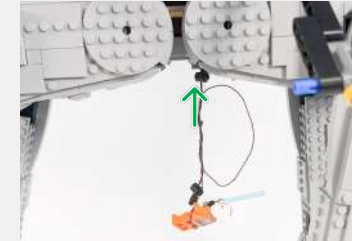
8



LMB Blue Lightsaber



9



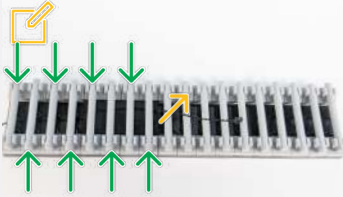
Legend → DISCONNECT → CONNECT / RECONNECT ↻ TURN / FLIP → DIRECTIONAL ↻ TWIST / BRAID * POWER ON TEST 📝 NOTE ICON

2-Port Expansion Board

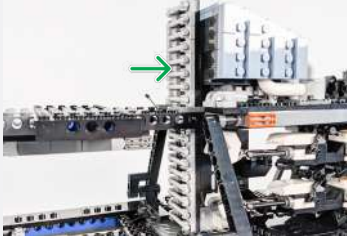
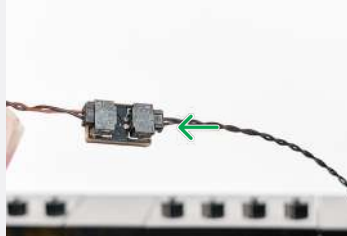
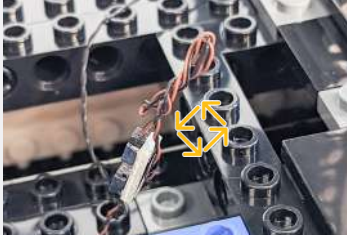

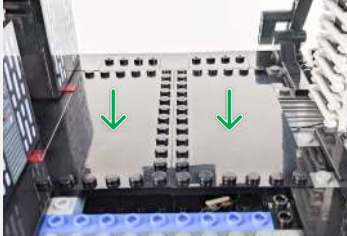
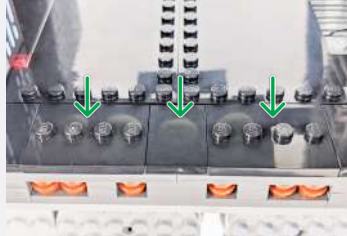







15cm Connecting Cable

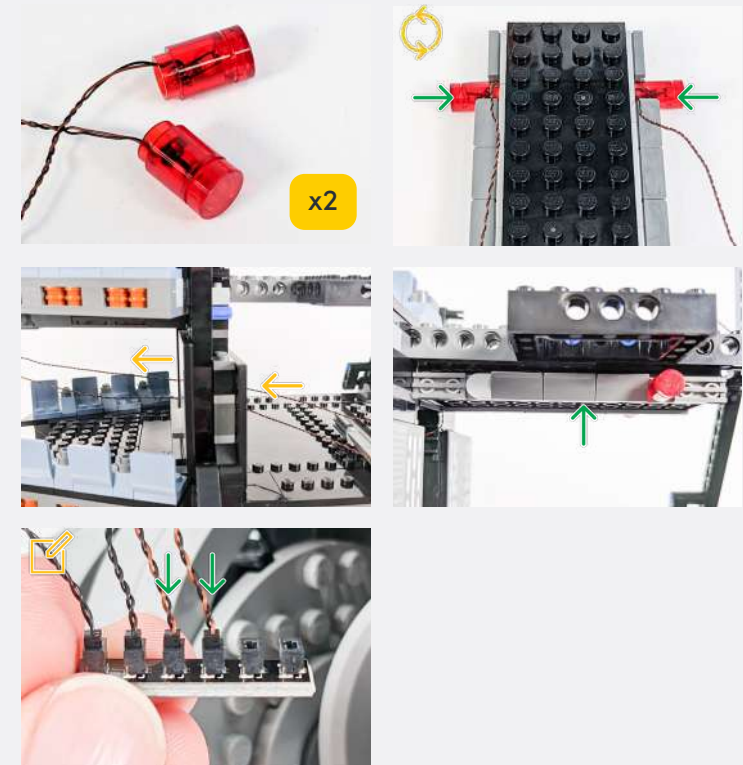




Place the Light Grey Bars on top of the 15cm Connecting Cable, allowing at least 5cm from the middle of the ladder.

Legend

 DISCONNECT
 CONNECT / RECONNECT
 TURN / FLIP
 DIRECTIONAL
 TWIST / BRAID
 POWER ON TEST
 NOTE ICON



Legend

- DISCONNECT
- CONNECT / RECONNECT
- TURN / FLIP
- DIRECTIONAL
- TWIST / BRAID
- POWER ON TEST
- NOTE ICON

10

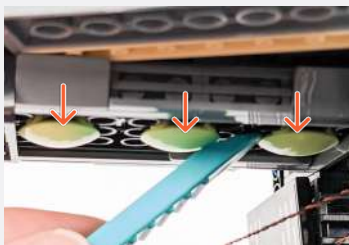
Red Strip Light



5cm Connecting Cable



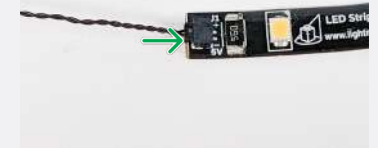
✂ Connect the 15cm Connecting Cable from step 9 to the other end of the Red Strip Light.



5cm Connecting Cable



White Strip Light



✂ Connect the 5cm Connecting Cable from earlier in this step to the other end of the White Strip Light.



✂ Connect the final 5cm Connecting Cable to the other end of the Micro 4-Port Expansion Board from step 7.

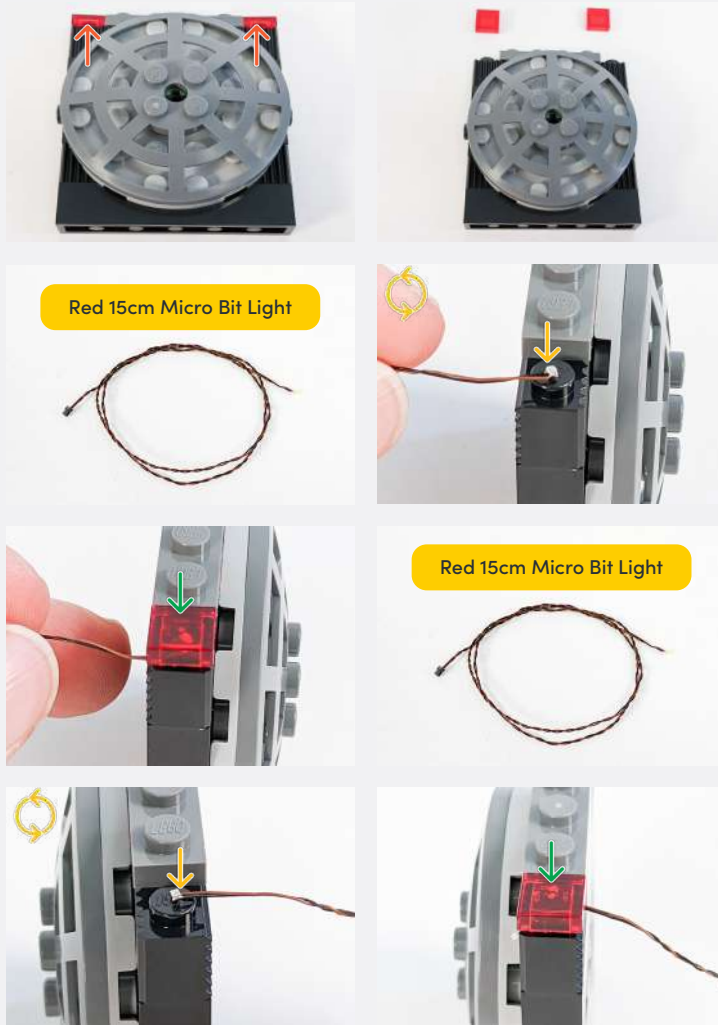


Legend

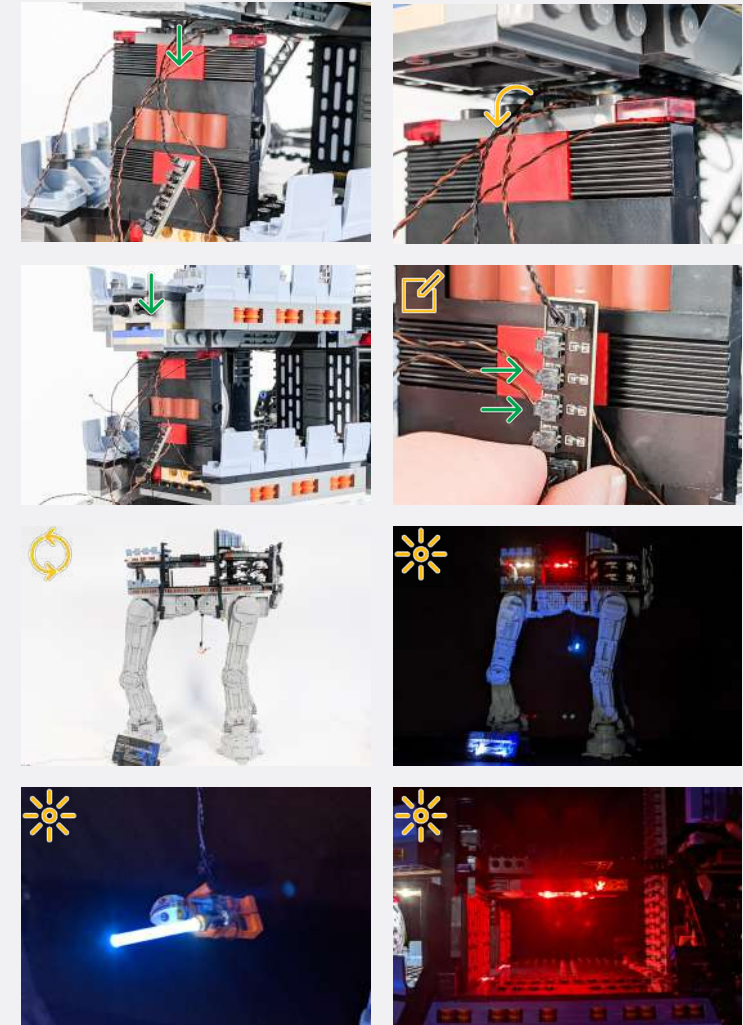
- DISCONNECT
- CONNECT / RECONNECT
- TURN / FLIP
- DIRECTIONAL
- TWIST / BRAID
- POWER ON TEST
- NOTE ICON

11

If you experience any issues with the lights not working and suspect an issue with a component, please try a different port on the expansion board to verify where the fault lies (with the light or expansion board). To correct any issues with expansion board ports, please view the section addressing expansion board issues in our troubleshooting section.

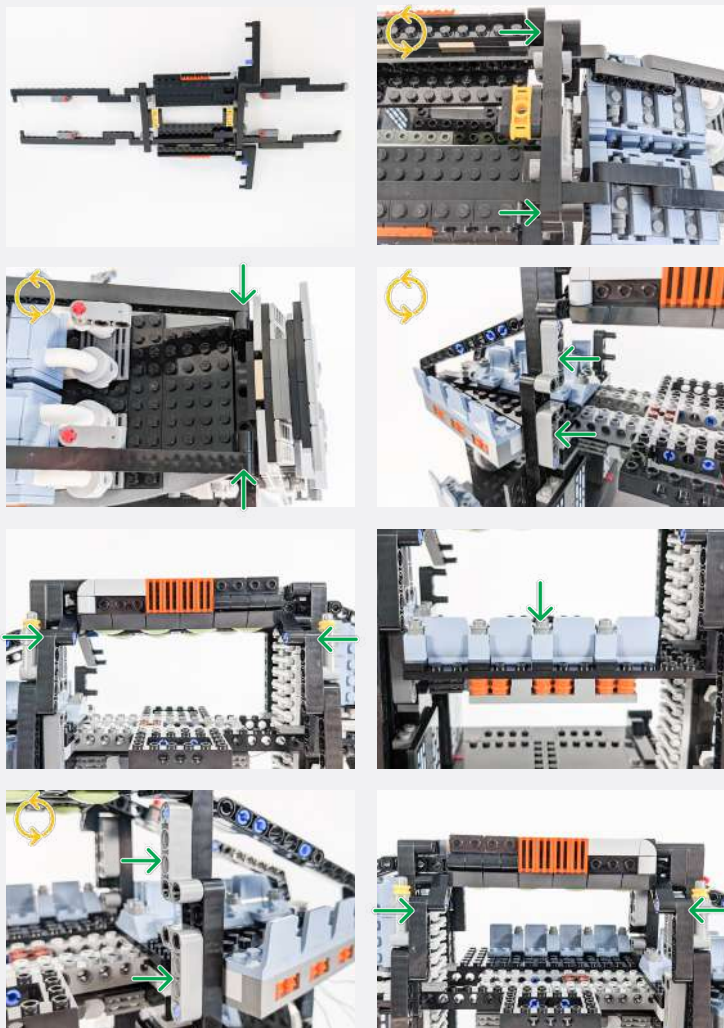


Connect the 2 Micro Bit Lights to the Micro 4-Port Expansion Board from step 7.



Legend
 DISCONNECT
 CONNECT / RECONNECT
 TURN / FLIP
 DIRECTIONAL
 TWIST / BRAID
 POWER ON TEST
 NOTE ICON

12

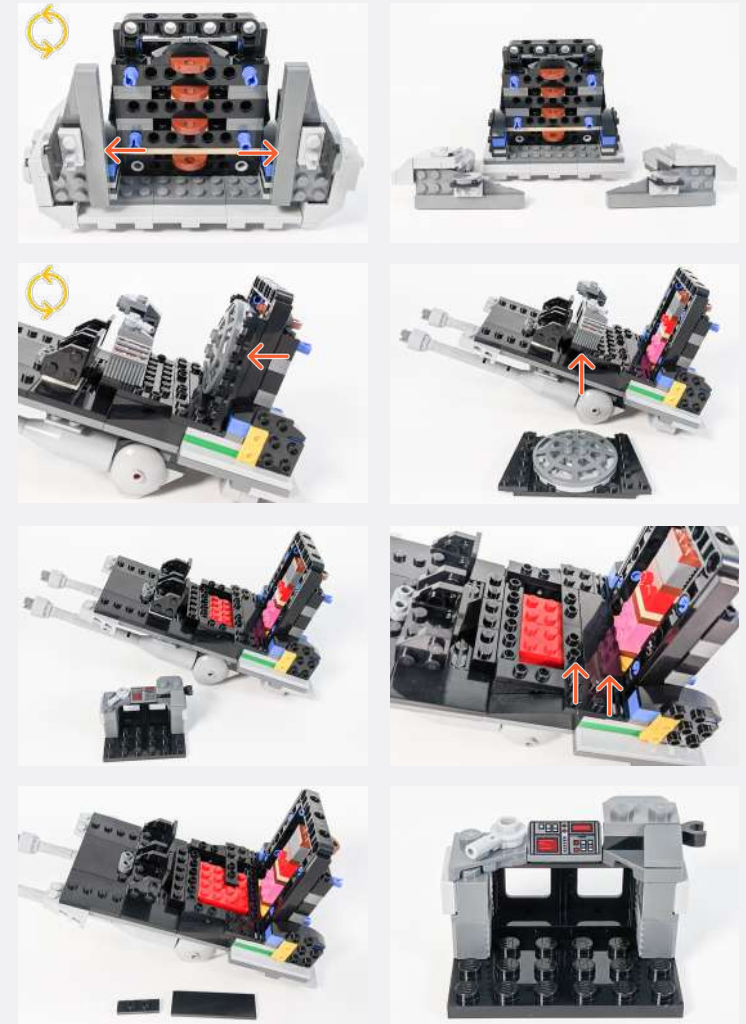
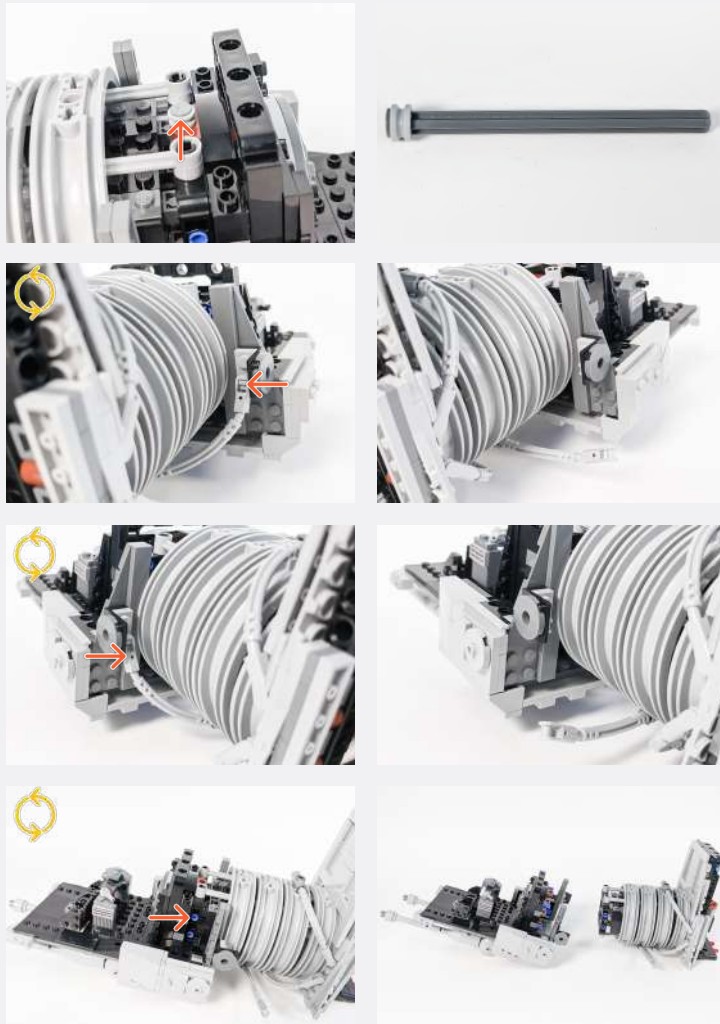


13



Legend

- DISCONNECT
- CONNECT / RECONNECT
- ↻ TURN / FLIP
- DIRECTIONAL
- ↻↻ TWIST / BRAID
- ✳ POWER ON TEST
- 📝 NOTE ICON



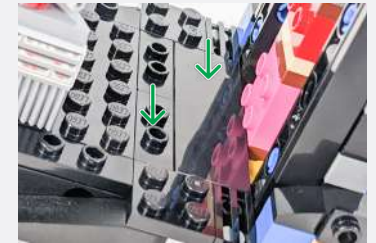
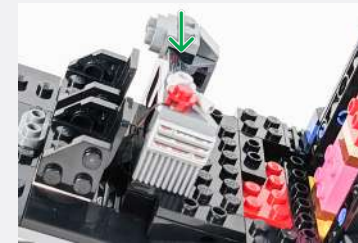
Legend → DISCONNECT → CONNECT / RECONNECT ↻ TURN / FLIP → DIRECTIONAL ↻ TWIST / BRAID ✨ POWER ON TEST 📝 NOTE ICON



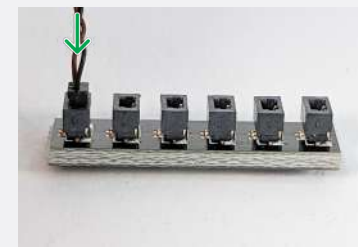
Flashing Red 30cm Bit Light



Trans Red Round Plate 1x1



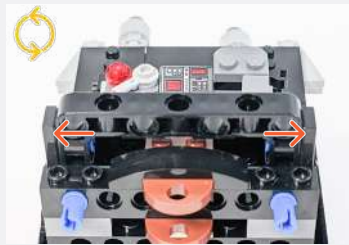
6-Port Expansion Board



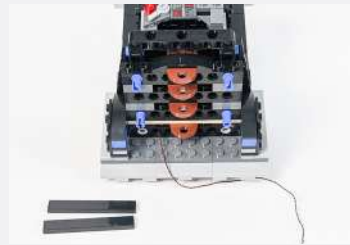
Legend

- DISCONNECT
- CONNECT / RECONNECT
- TURN / FLIP
- DIRECTIONAL
- TWIST / BRAID
- POWER ON TEST
- NOTE ICON

14



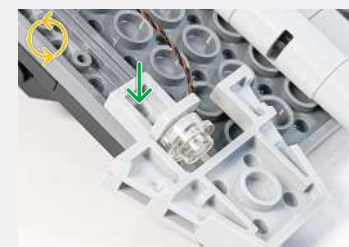
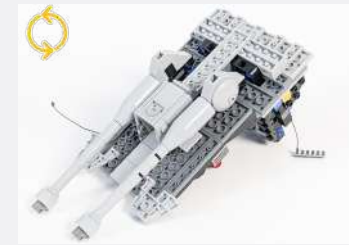
Bracket 1x1 - Light Grey




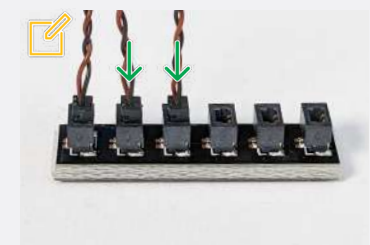
Cool White 30cm Bit Light



Trans Clear Round Plate 1x1

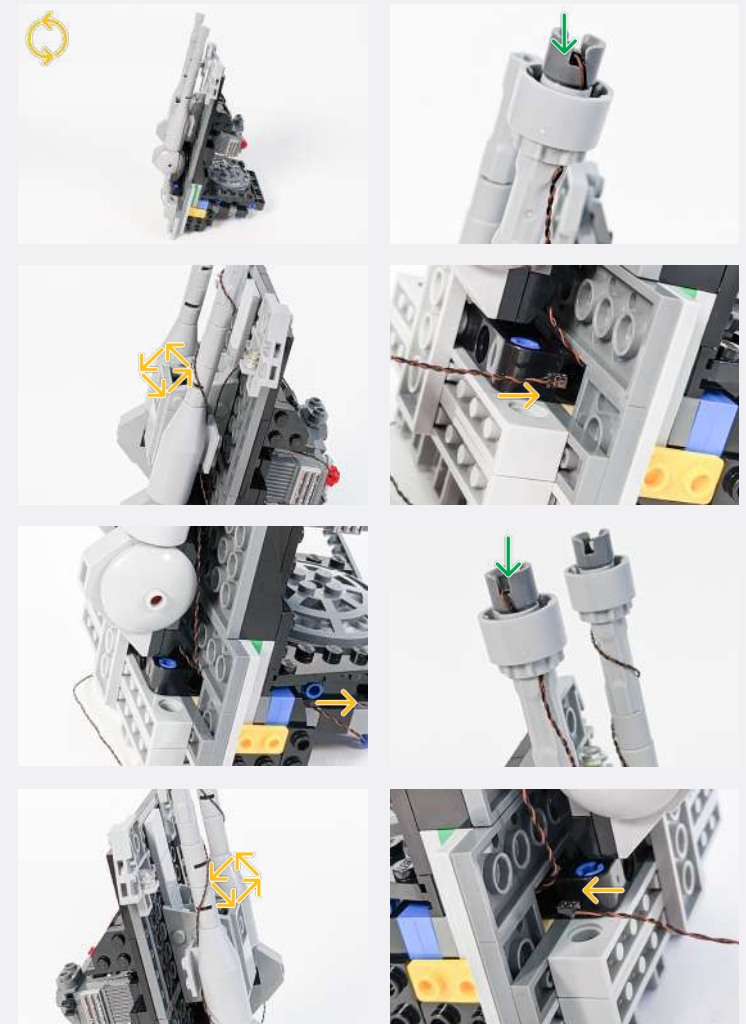


 Connect the two Bit Lights to the 6-Port Expansion Board from step 13.

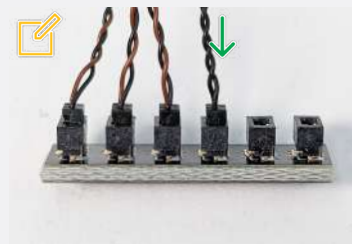
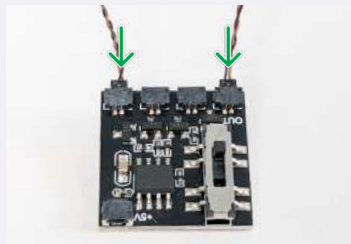
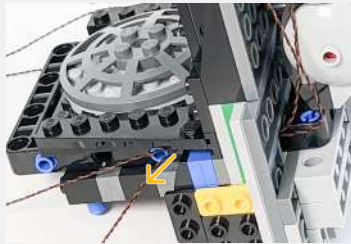


Legend  DISCONNECT  CONNECT / RECONNECT  TURN / FLIP  DIRECTIONAL  TWIST / BRAID  POWER ON TEST  NOTE ICON

15

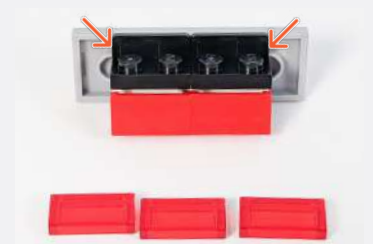
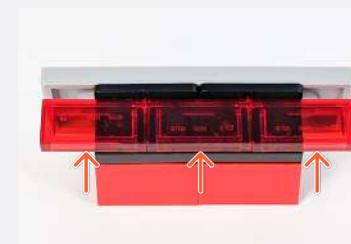


Legend → DISCONNECT → CONNECT / RECONNECT ↻ TURN / FLIP → DIRECTIONAL ↻ TWIST / BRAID * POWER ON TEST 📝 NOTE ICON

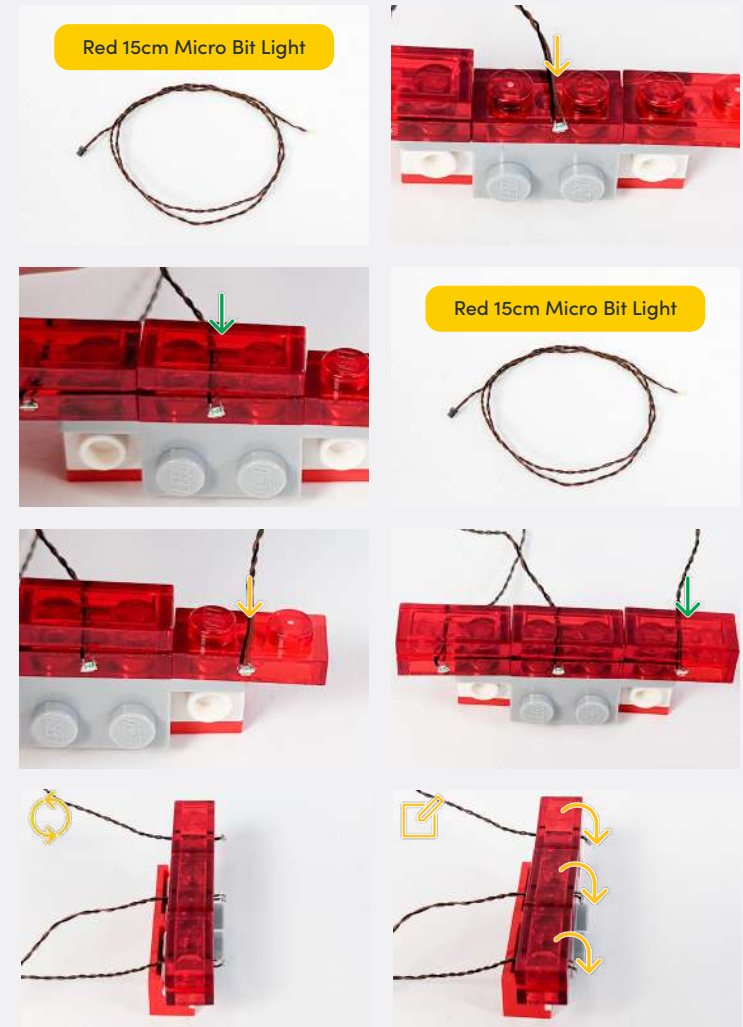
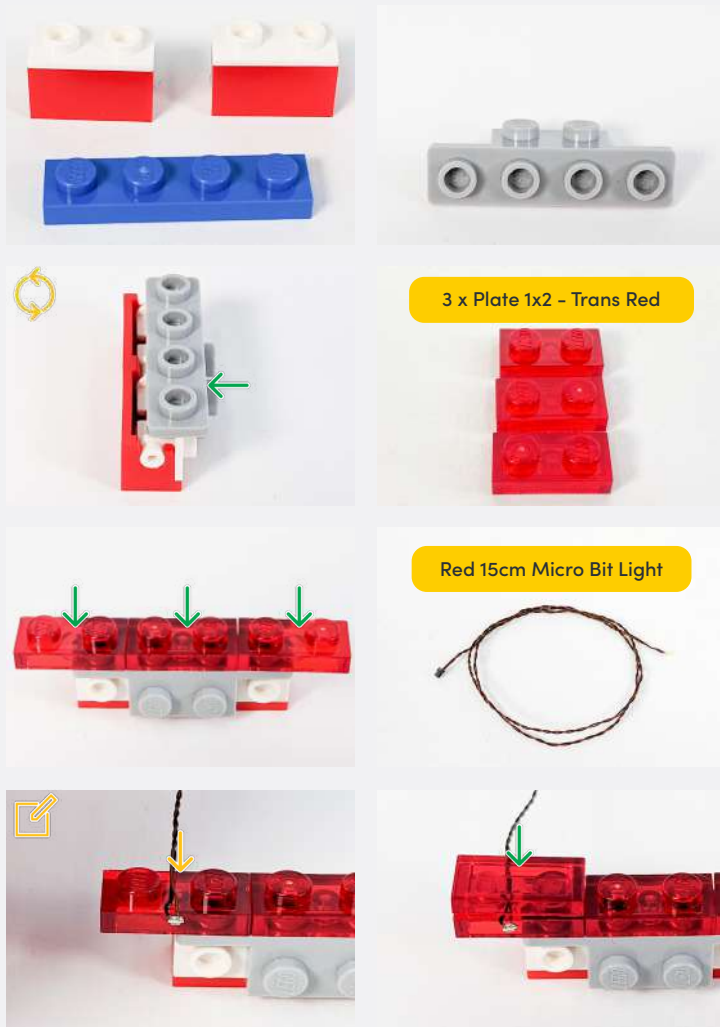


Connect the other end of the 5cm Connecting Cable to the 6-Port Expansion Board from step 13.

16



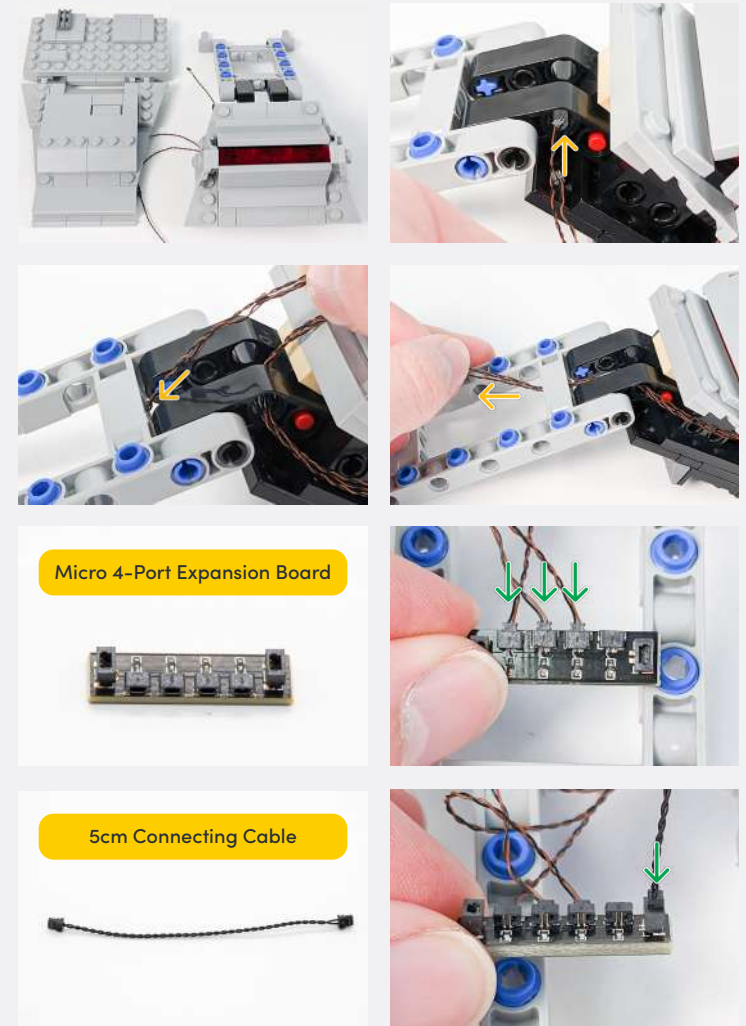
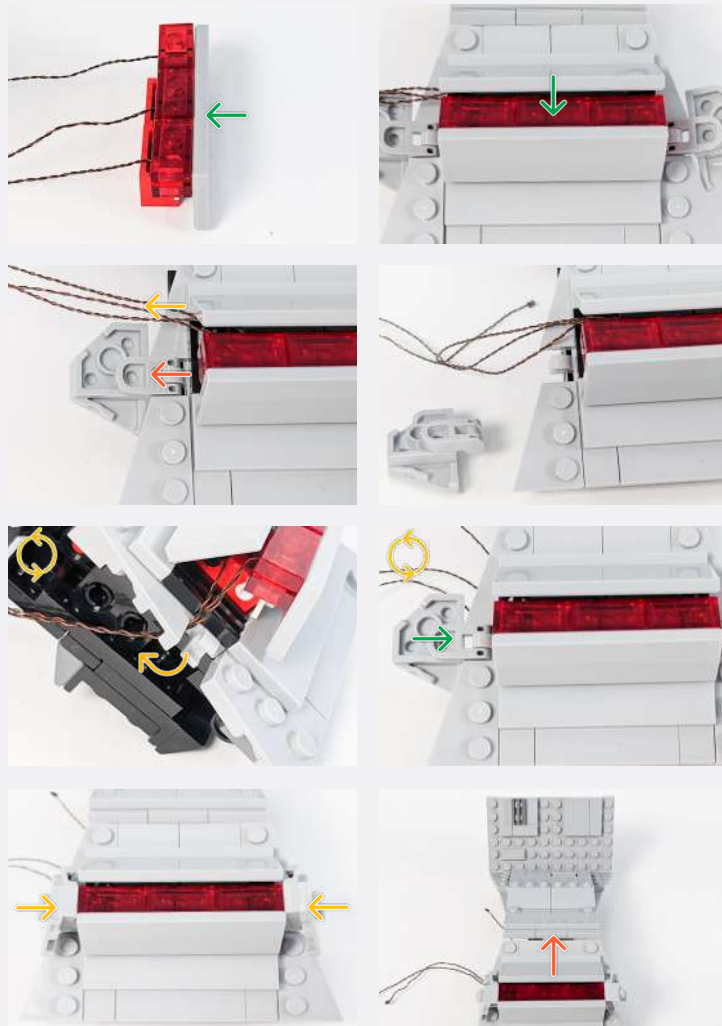
Legend DISCONNECT CONNECT / RECONNECT TURN / FLIP DIRECTIONAL TWIST / BRAID POWER ON TEST NOTE ICON



Bend the 3 Micro Bit Lights down, ensuring the LED is facing the Trans-Red LEGO elements.

Legend

- DISCONNECT
- CONNECT / RECONNECT
- TURN / FLIP
- DIRECTIONAL
- TWIST / BRAID
- POWER ON TEST
- NOTE ICON

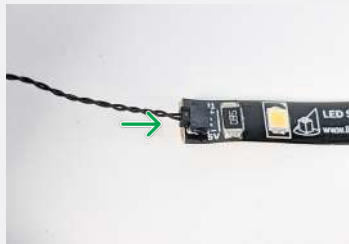


Legend → DISCONNECT → CONNECT / RECONNECT ↻ TURN / FLIP → DIRECTIONAL ↻ TWIST / BRAID ✨ POWER ON TEST 📌 NOTE ICON

17



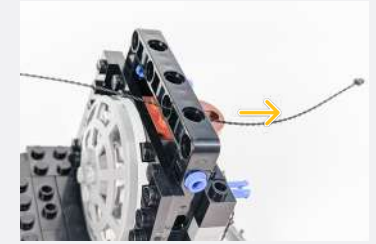
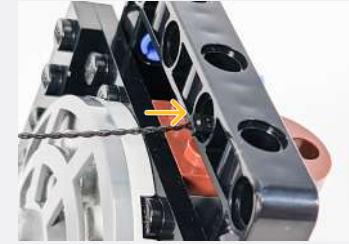
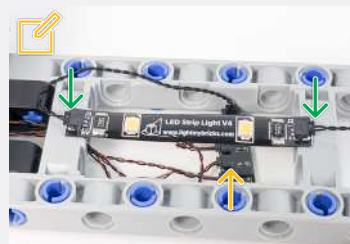
White Strip Light



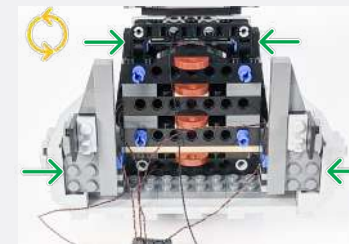
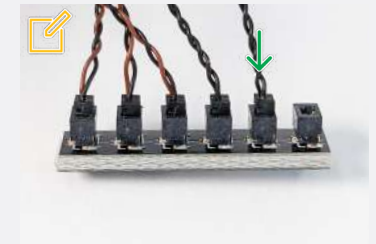
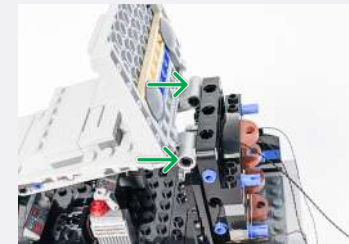
15cm Connecting Cable



When adhering the Strip Light to the LEGO, ensure the Micro 4-Port Expansion Board is hidden underneath the Strip Light.



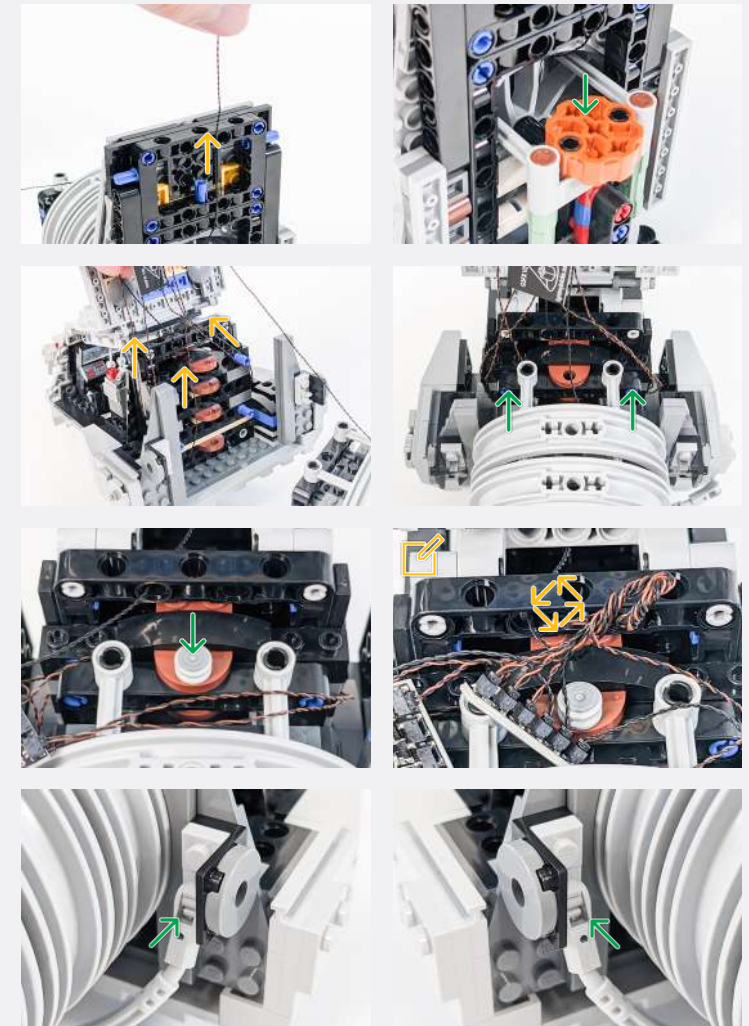
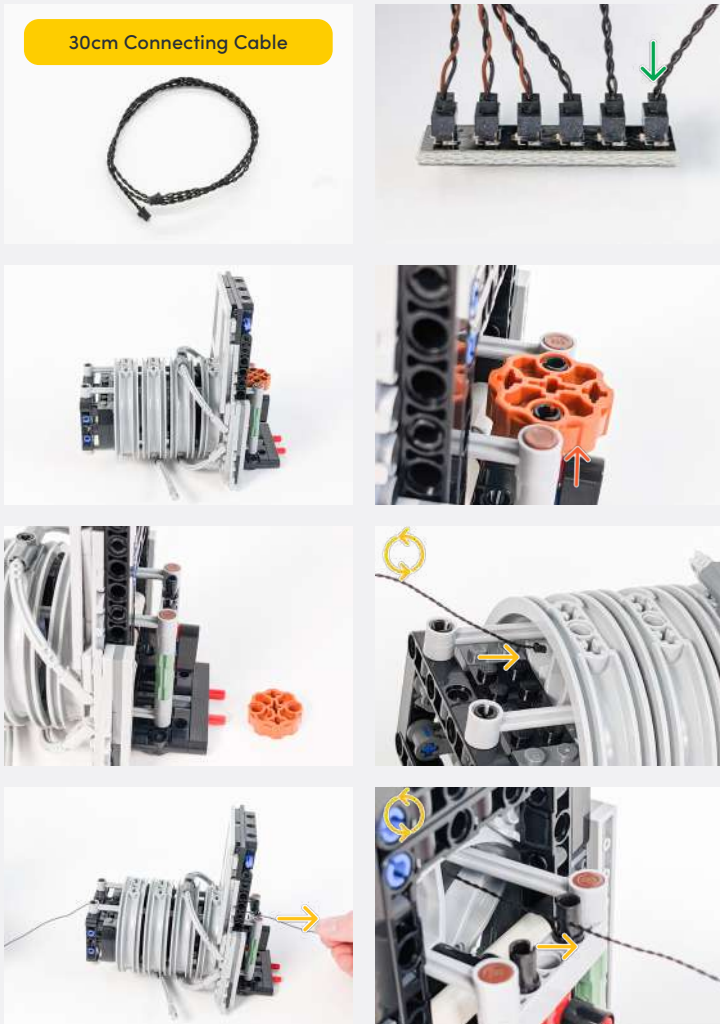
Connect the other end of the 15cm Connecting Cable to the 6-Port Expansion Board from step 13.



Legend

- DISCONNECT
- CONNECT / RECONNECT
- TURN / FLIP
- DIRECTIONAL
- TWIST / BRAID
- POWER ON TEST
- NOTE ICON

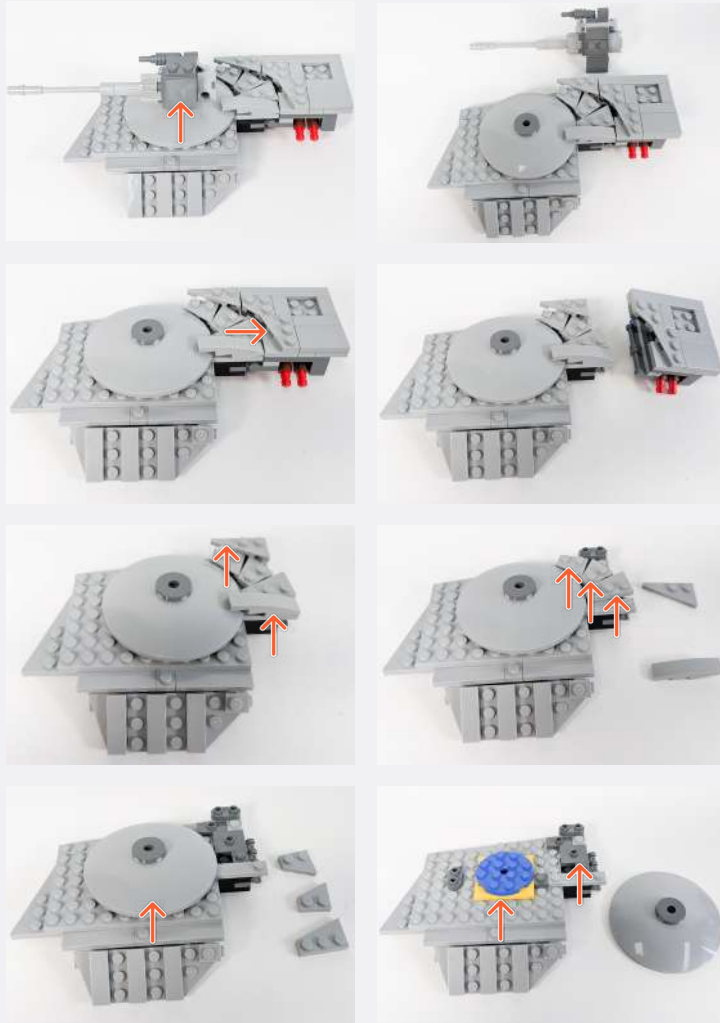
18



✎ Ensure to exclude the 30cm Connecting Cable when twisting the other cables together.

Legend → DISCONNECT → CONNECT / RECONNECT ↻ TURN / FLIP → DIRECTIONAL ↻ TWIST / BRAID * POWER ON TEST ✎ NOTE ICON

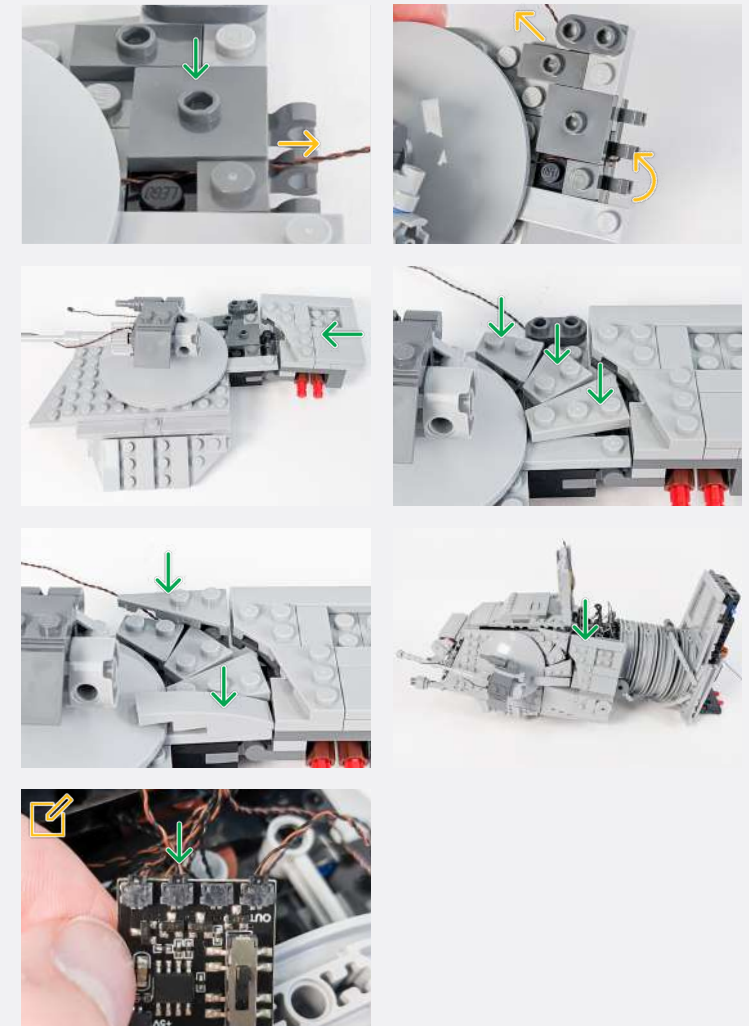
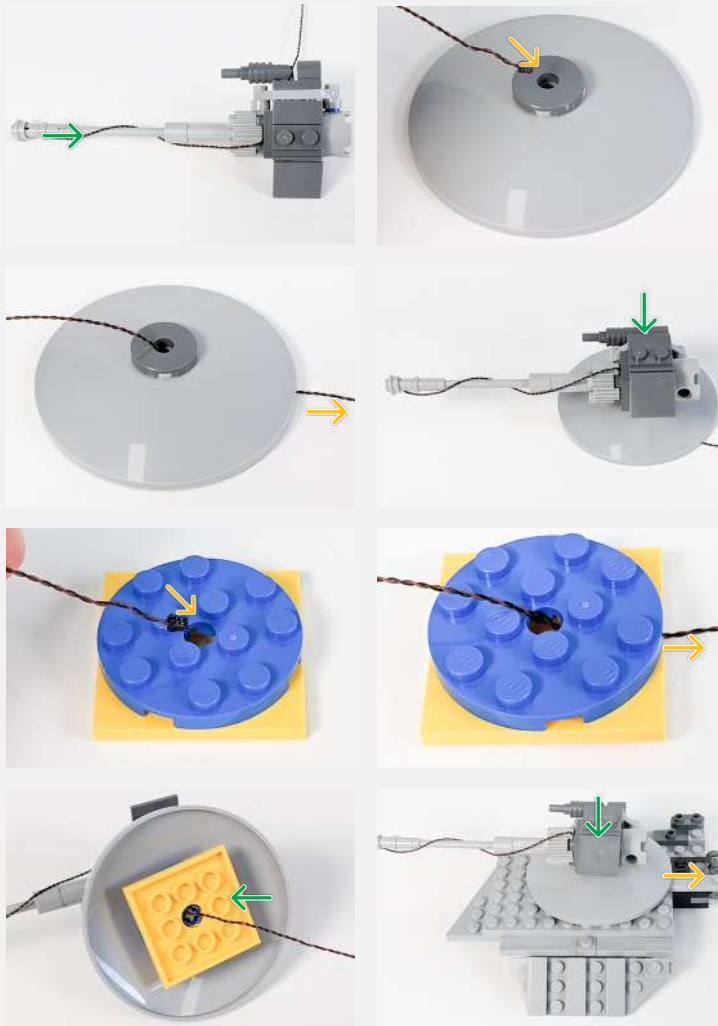
19




Red 30cm Bit Light

Light Grey Round Plate 1x1 w/ Open Stud

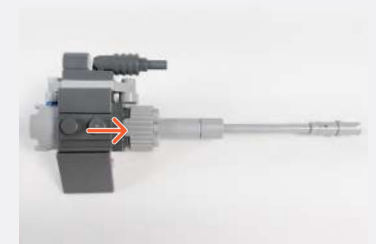
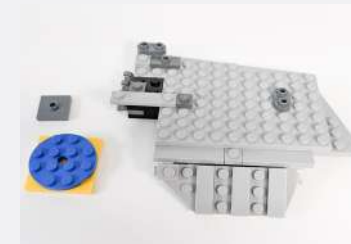
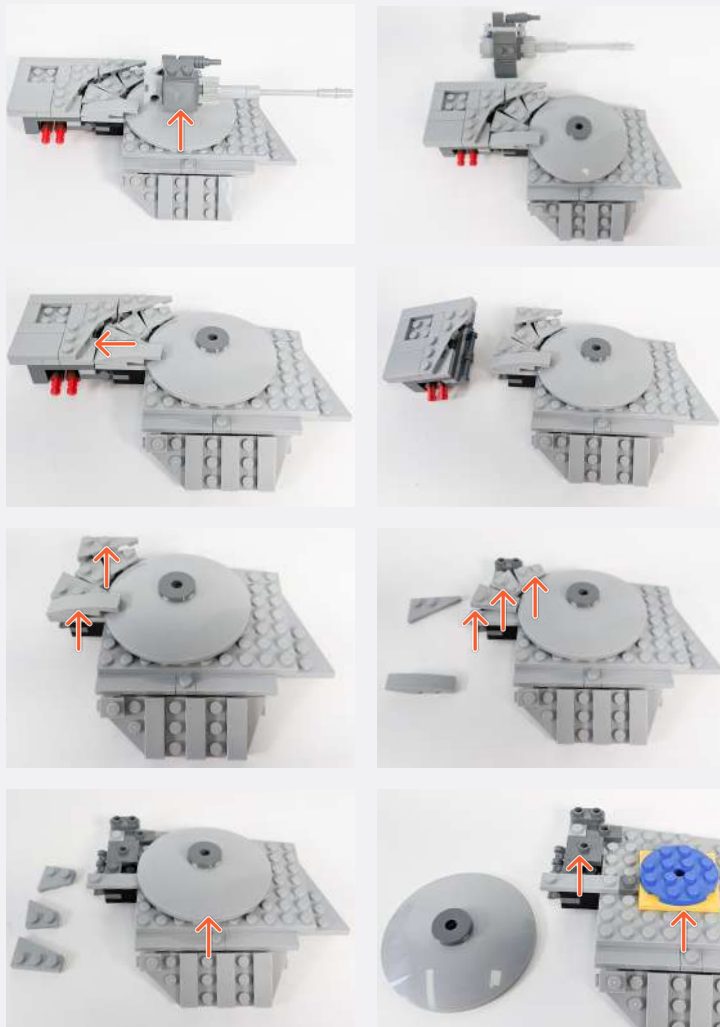
Legend → DISCONNECT → CONNECT / RECONNECT ↻ TURN / FLIP → DIRECTIONAL ↻ TWIST / BRAID * POWER ON TEST 📄 NOTE ICON



 Connect the Bit Light to the Gun Effects Board from step 14.

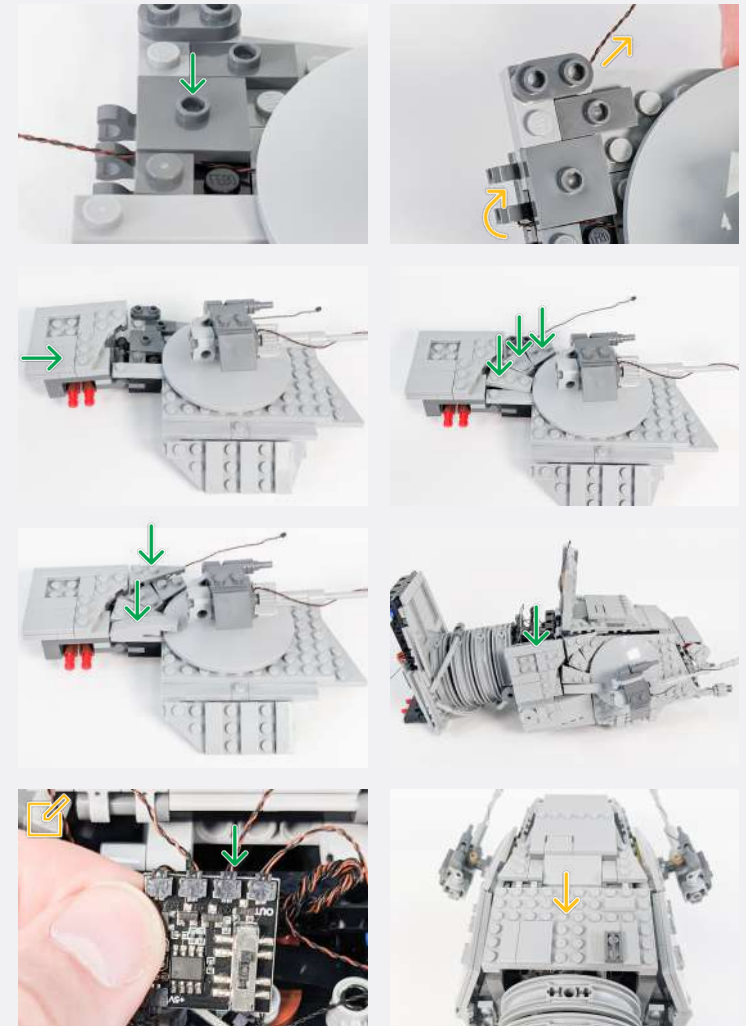
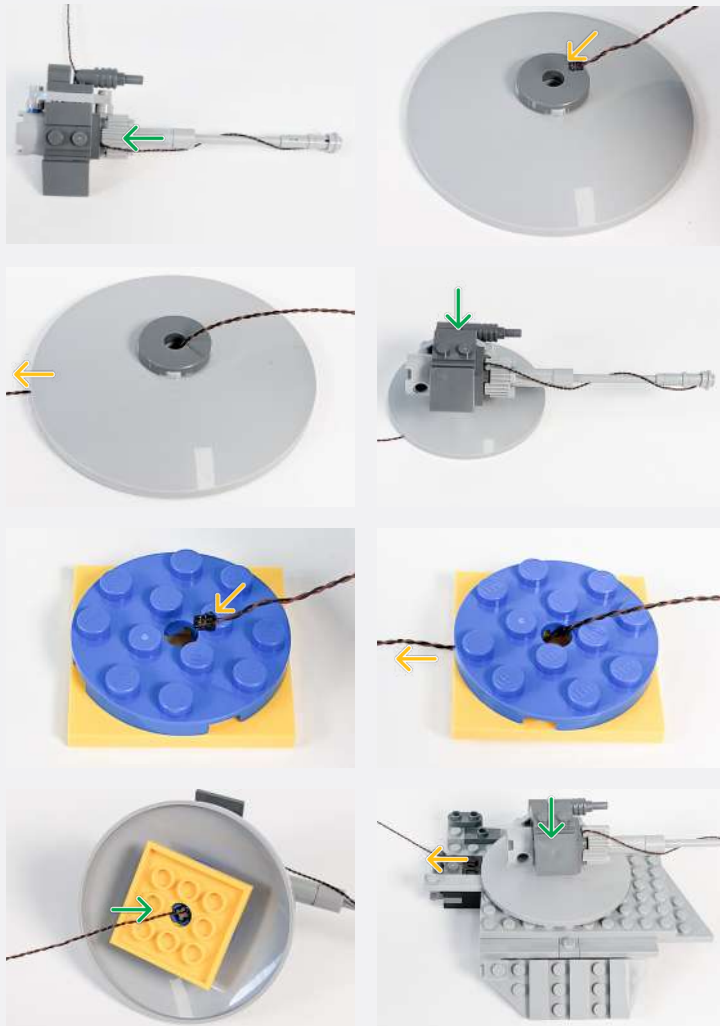
Legend  DISCONNECT  CONNECT / RECONNECT  TURN / FLIP  DIRECTIONAL  TWIST / BRAID  POWER ON TEST  NOTE ICON

20



Legend

- DISCONNECT
- CONNECT / RECONNECT
- ↻ TURN / FLIP
- DIRECTIONAL
- ↻↻ TWIST / BRAID
- ✳ POWER ON TEST
- 📄 NOTE ICON



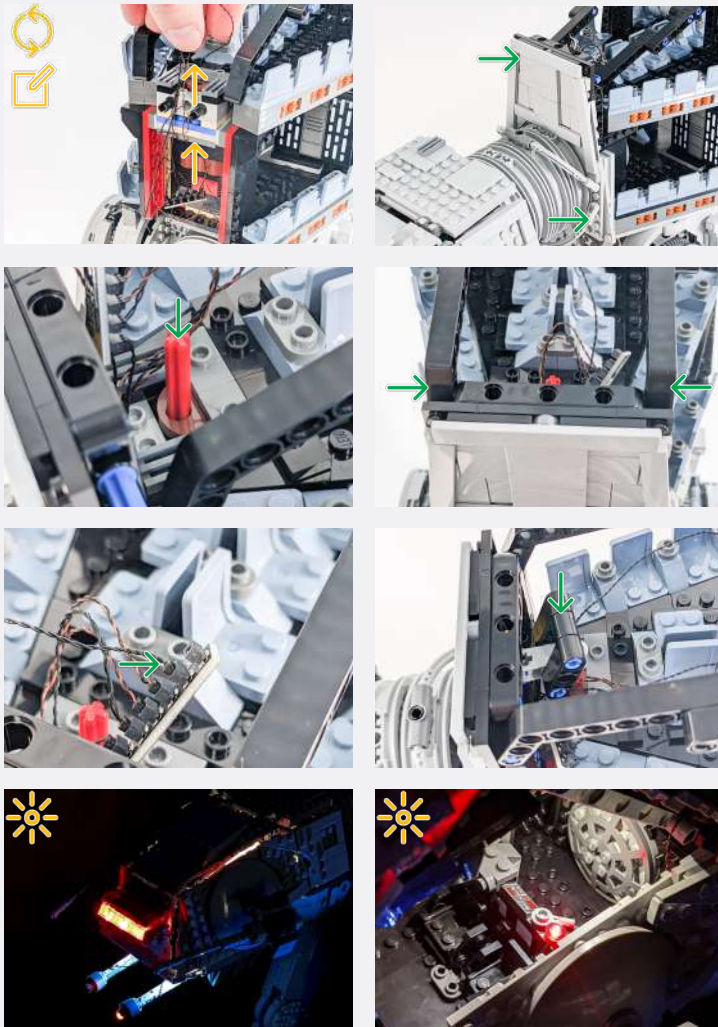
Connect the Bit Light to the Gun Effects Board from step 14.

Legend DISCONNECT CONNECT / RECONNECT TURN / FLIP DIRECTIONAL TWIST / BRAID POWER ON TEST NOTE ICON

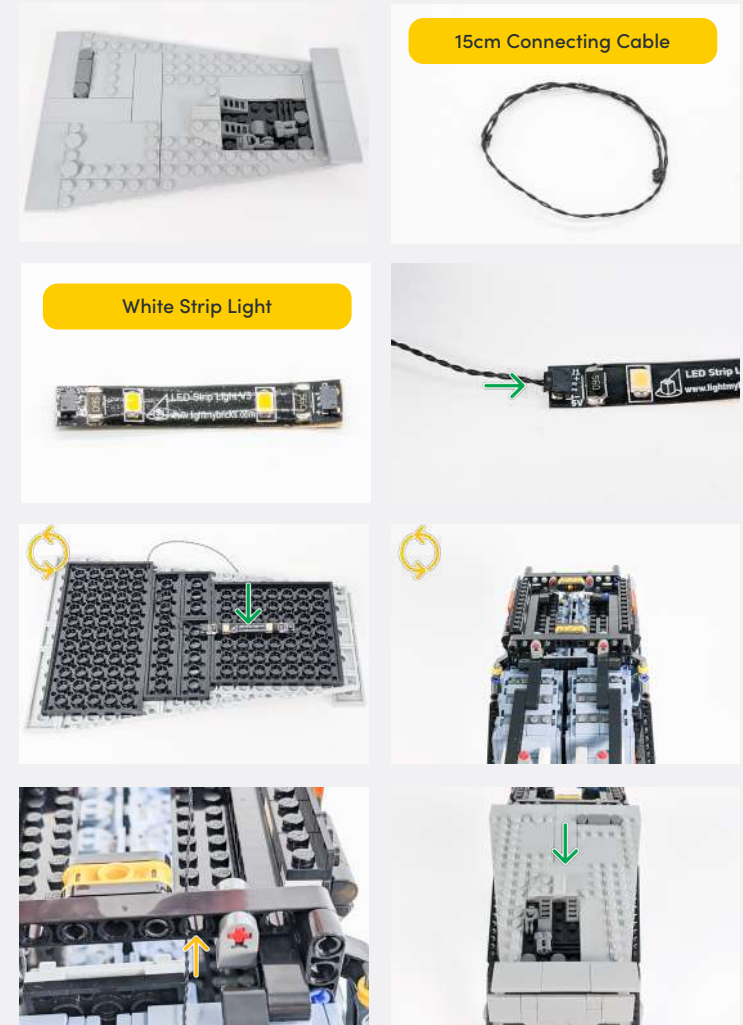
📌 If you experience any issues with the lights not working and suspect an issue with a component, please try a different port on the expansion board to verify where the fault lies (with the light or expansion board). To correct any issues with expansion board ports, please view the section addressing expansion board issues in our troubleshooting section.

21

📌 Pull up the cables and 6-Port Expansion Board from step 5 to the second level of the AT-AT, while leaving the Micro 4-Port Expansion Board underneath.

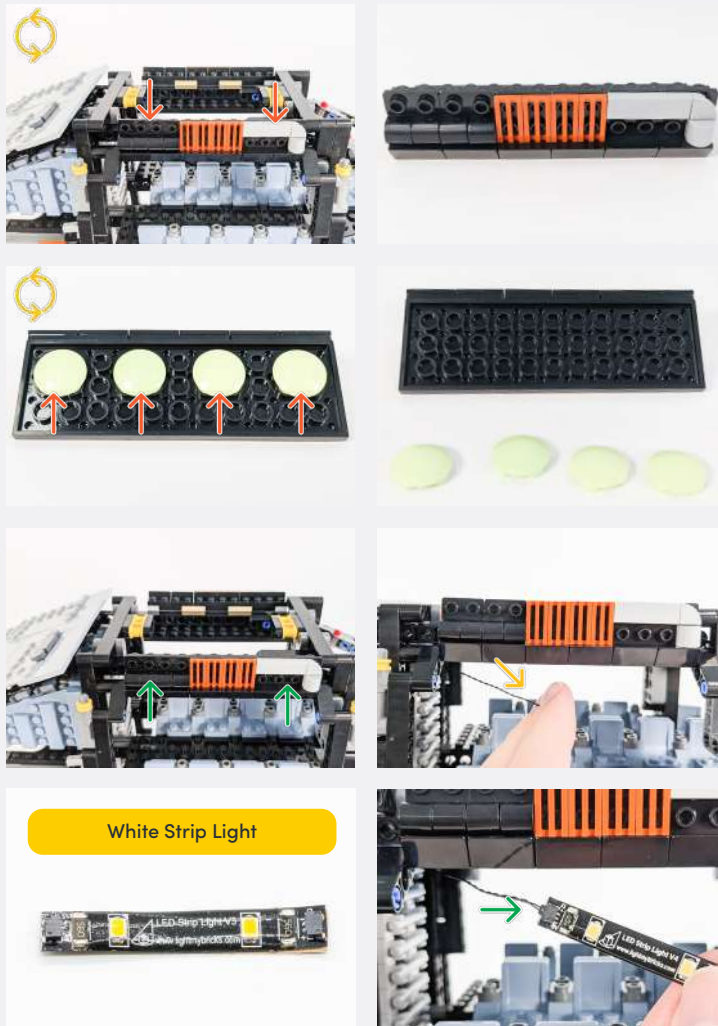


22

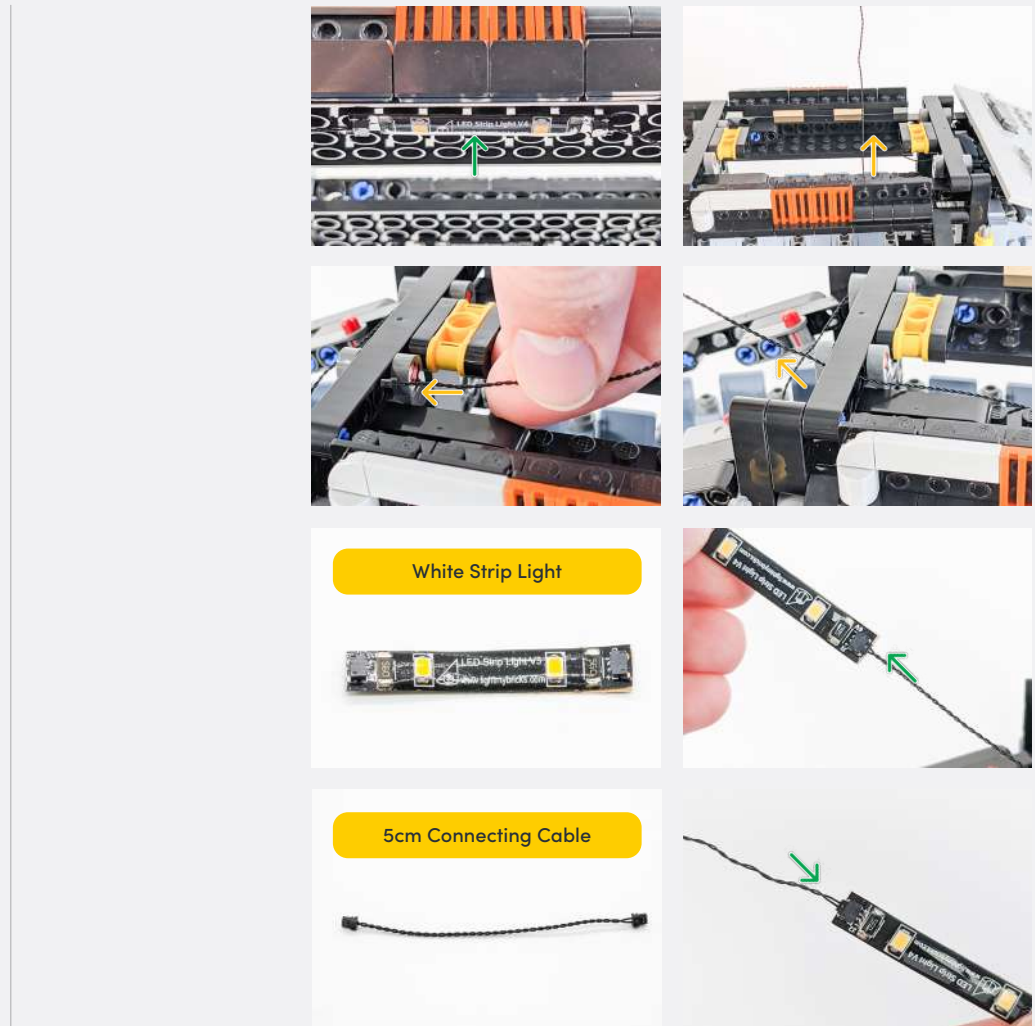
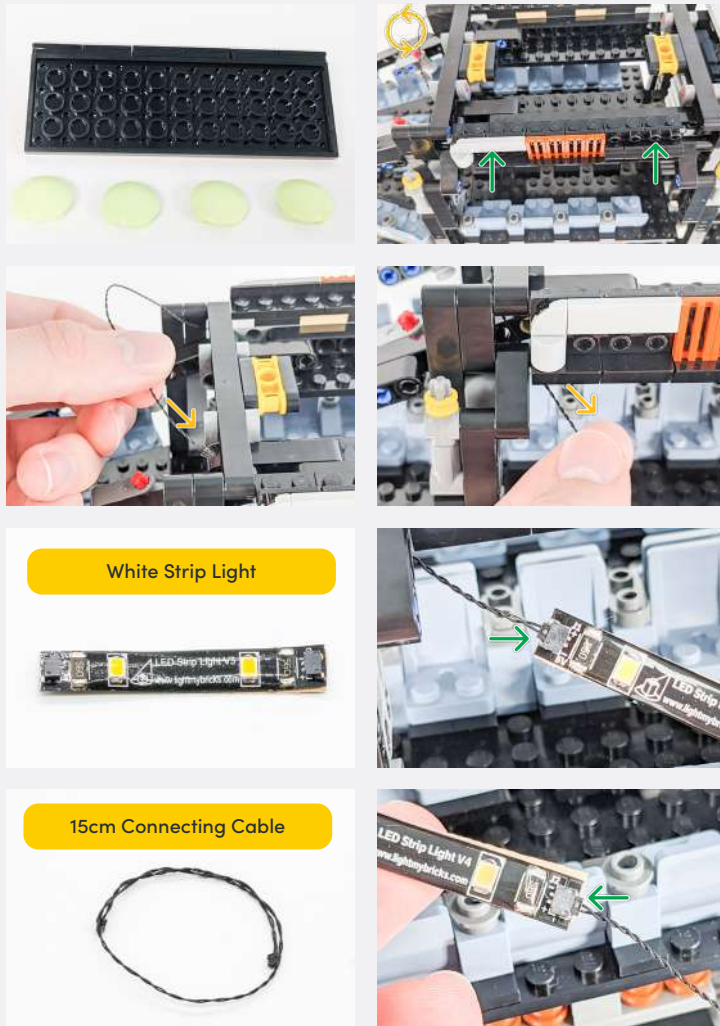


Legend

- DISCONNECT
- CONNECT / RECONNECT
- TURN / FLIP
- DIRECTIONAL
- TWIST / BRAID
- POWER ON TEST
- NOTE ICON



Legend → DISCONNECT → CONNECT / RECONNECT ↻ TURN / FLIP → DIRECTIONAL ↻ TWIST / BRAID ✨ POWER ON TEST 📝 NOTE ICON



Legend

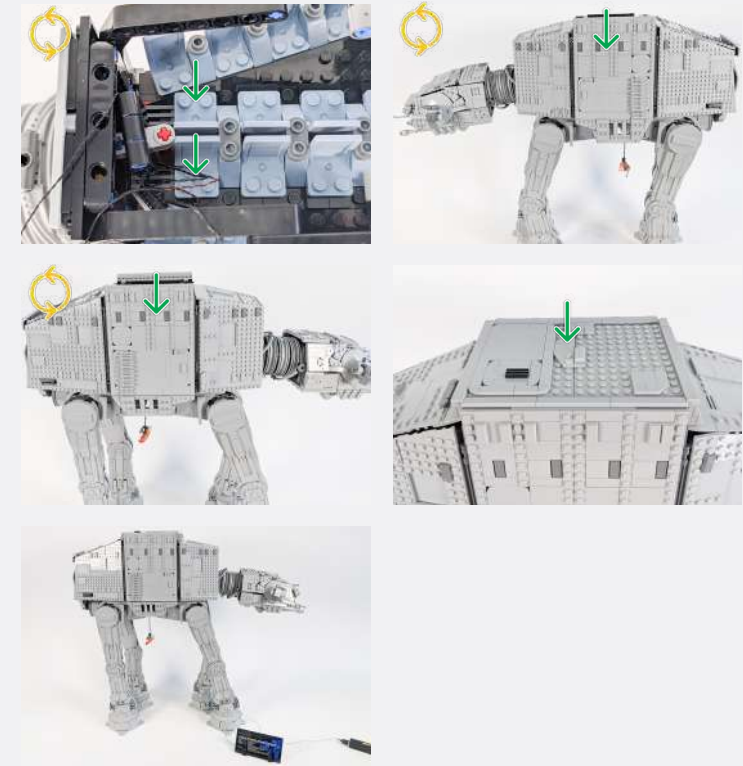
- DISCONNECT
- CONNECT / RECONNECT
- TURN / FLIP
- DIRECTIONAL
- TWIST / BRAID
- POWER ON TEST
- NOTE ICON

If you experience any issues with the lights not working and suspect an issue with a component, please try a different port on the expansion board to verify where the fault lies (with the light or expansion board). To correct any issues with expansion board ports, please view the section addressing expansion board issues in our troubleshooting section.

Connect the other end of the 5cm Connecting Cable to the last port in the 6-Port Expansion Board from step 2.



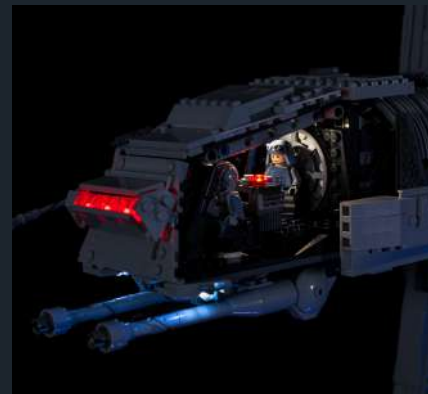
23



Legend DISCONNECT CONNECT / RECONNECT TURN / FLIP DIRECTIONAL TWIST / BRAID POWER ON TEST NOTE ICON

FINAL PRODUCT

This finally completes installation of the Light My Bricks UCS AT-AT 75313 Light Kit.





TROUBLESHOOTING

Light My Bricks lighting kits contain individual components that are very small and can be easily damaged if not handled correctly.

To prevent unnecessary damage to components, we highly recommend that the User Guide section, **“Important things to note”** is read carefully. Follow the handling procedures in the User Guide to help prevent faults and damages to your Light My Bricks components.

If you are experiencing issues with your Light My Bricks set, watch our troubleshooting video [here](#) or read on for a list of common causes to help you troubleshoot.

Troubleshooting

Firstly, ensure that the batteries have power using a battery charge gauge.

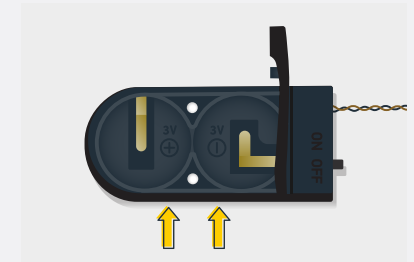
If the batteries have no power, replace the batteries.

If the batteries still have power, check to see if the batteries have been inserted correctly into the battery pack.

Check For CR2032 Batteries Using The Flat Battery Pack

Inside the battery pack is a symbol indicating which side the (round) CR2032 battery should be inserted. Check that the “+” side of the battery pack has the battery with the “+” symbol facing downwards.

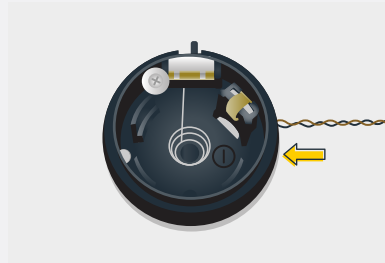
On the opposite side, the “-” side of the battery pack should have the battery flipped upside down, that is the “+” symbol facing upwards.



Troubleshooting

Check For Cr2032 Batteries Using The Round Battery Pack

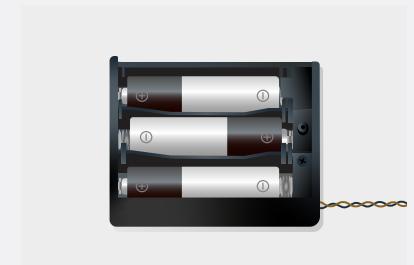
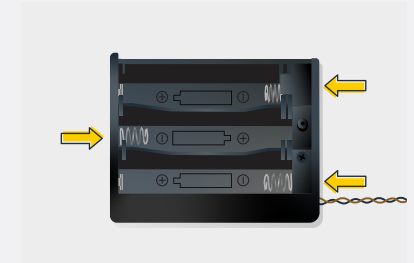
Inside the battery pack is a symbol indicating which side the (round) CR2032 battery should be inserted. In this case, for the stacked battery pack, ensure that BOTH batteries have the “+” symbol facing upwards.



Check for AA batteries using the AA battery pack

Inside the battery pack are symbols indicating which direction the AA battery should be inserted. The flat side of the battery should be paired with the spring side of the battery pack.

If the batteries have been installed correctly and your kit still isn't operating correctly, the next step is to check the wiring.



Troubleshooting

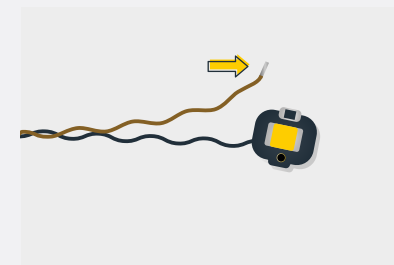
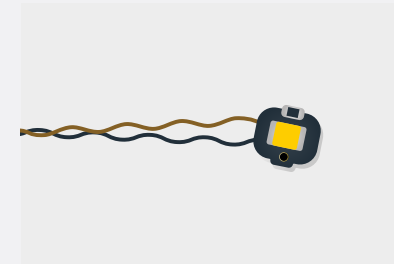
Check Your Wires

In order for Light My Bricks components to fit in between and underneath LEGO® bricks, the components need to be very small. Due to this nature, Light My Bricks components can be easily damaged when not handled correctly.

Be careful when removing unpacked components out of the packaging and ensure not to forcibly pull at the wires as this can damage the soldering that attach the wires to the LEDs.

If the wiring is detached from the LED itself, the light will not operate.

When connecting lights to your LEGO set, check that there are no pinched wires underneath or in between bricks and plates. When the wires are pinched and the exposed wires are touching each other, this can cause a crosswire and the lights to not function correctly.



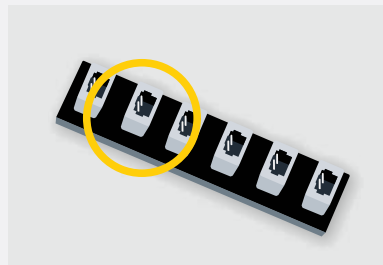
Troubleshooting

Check Your Expansion Board Ports/ Strip Light Ports / Effects Board Ports

It is important to note that connectors can only be inserted to the expansion board, strip light, or effects board ports in one direction.

Forcibly inserting connectors in the incorrect direction will result in damaging the pins inside each of the ports on your component board.

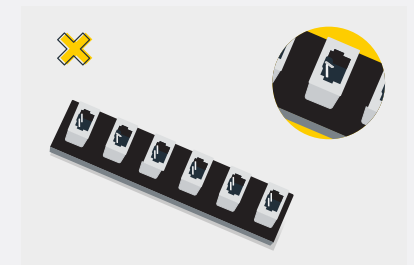
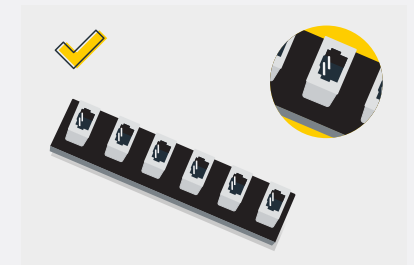
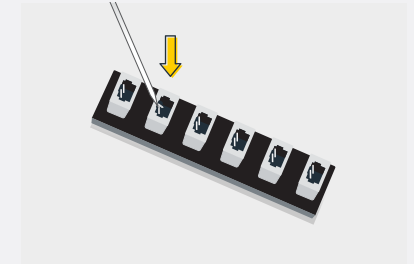
Not only will a light connected to the damaged port not work, but if the pins inside the port are bent to a point they are touching each other, this can result in all other lights in the system to stop working. This is a short circuit.



A short circuit can also result in overheating of the board, cable or batteries. If you suspect a short circuit, **DISCONNECT POWER IMMEDIATELY**. Batteries can fail, catch fire, or even explode if left connected to a short circuit for too long.

If you suspect you have a faulty component due to a bent pin, try the following steps:

If you look carefully inside each of the ports, each port contains 2 small pins that should be straight. You will be able to identify a faulty port if it has any bent pins.





CONTACT US

If you have an enquiry regarding the online shop, our products or a general enquiry please refer to our Frequently Asked Questions webpage here.

Alternatively, you can contact our Customer Services team by visiting our online support portal here.

support.lightmybricks.com

We thank you for purchasing this product and hope you enjoy!



lightmybricks.com