



**LIGHT^{MY}
BRICKS**



LEGO® LOOP COASTER #10303

LIGHT KIT

INSTALLATION GUIDE

Light My Bricks



LEGO LOOP COASTER 10303 INSTALLATION GUIDE

Hi There!

We're here to help you get started on the LEGO Loop Coaster 10303 Light Kit.

This PDF details the instructions for the LED light kit only. If you are wishing to purchase this product, please [click here](#) to view the product page.

If you run into any issues, please refer to the troubleshooting section towards the end of this guide.

Have fun and enjoy!



PACKAGE CONTENTS:



- 21 x White 30cm Bit Light*
- 1 x Cool White 30cm Bit Light
- 1 x Red & Blue 15cm Bit Light
- 1 x Orange & Green 15cm Bit Light
- 2 x Rotating Bit Light
- 12 x Warm White 30cm Large Bit Light*
- 3 x Cool White 30cm Large Bit Light



- 2 x 2-Port Expansion Board
- 8 x 6-Port Expansion Board
- 2 x 8-Port Expansion Board*
- 1 x Gun Effects Board
- 2 x Rotating Sequence Effects Board
- 24 x Adhesive Squares



- 4 x 5cm Connecting Cable*
- 2 x 15cm Connecting Cable
- 7 x 30cm Connecting Cable
- 3 x 50cm Connecting Cable*



- 1x USB Power Cable
(Power Source not Included)

ASSORTED BRICKS:



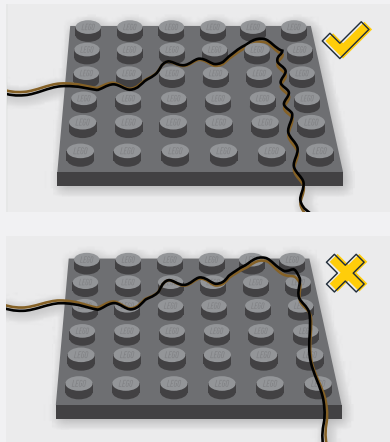
- 15 x Round Plate 1x1 w/ Open Stud – Black
- 13 x Mod Plate 1x1 w/ Handle – Black
- 10 x Arm Skeleton, Bent with Clips (Horizontal Grip) – Black
- 13 x Plate 1x2 MW Handle On End – Black
- 3 x Arm Skeleton, Bent with Clips at 90 degrees – Black
- 1 x Round Brick 1x1 – Trans Red
- 2 x Round Plate 1x1 – Trans Red
- 1 x Round Plate 1x1 – Trans Dark Blue
- 1 x Round Plate 1x1 – Trans Green
- 1 x Round Plate 1x1 – Trans Pink
- 1 x Round Plate 1x1 – Trans Clear
- 2 x Plate 2x8 – Black
- 1 x Plate 2x2 W Rounded Bottom – Trans Clear
- 1 x Cone 1 x 1 w/ Top Groove – Trans Orange
- 1 x Bracket 1x1 – Light Grey

* Indicates components which include spares

Contents

Before You Begin	5
Blueprint	8
Instructions	10
Final Product	59
Troubleshooting	60
Contact	65

Before You Begin



Laying cables in between and underneath bricks

Cables can fit in between and underneath LEGO® bricks, plates, and tiles providing they are laid correctly between the LEGO® studs. Do NOT forcefully join LEGO® together around cables; instead ensure they are laying comfortably in between each stud.

CAUTION: Forcing LEGO® to connect over a cable can result in damaging the cable and light.

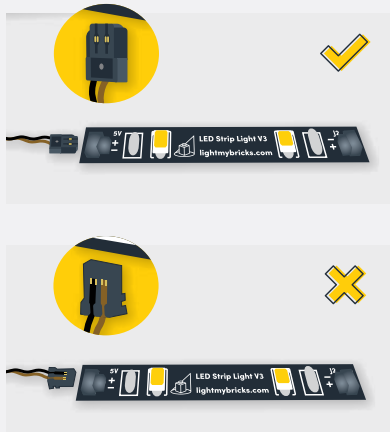


Connecting Cable Connectors To Expansion Boards

Take extra care when inserting connectors to ports of Expansion Boards. Connectors can be inserted only one way. With the expansion board facing up, look for the soldered “=” symbol on the left side of the port. The connector side with the wires exposed should be facing toward the soldered “=” symbol as you insert into the port. If a plug won’t fit easily into a port connector, do not force it.

Incorrectly inserting the connector can result in bent pins inside the port or possible overheating of the expansion board when connected.

Before You Begin



Connecting Cable Connectors To Strip Lights

Take extra care when inserting connectors to ports on the Strip Lights. Connectors can be inserted only one way. With the Strip Light facing up, ensure the side of the connector with the wires exposed is facing down. If a plug won't fit easily into a port connector, don't force it. Doing so will damage the plug and the connector.



Connecting Micro Cable Connectors To Micro Expansion Board Ports

Take extra care when inserting the micro connectors to micro ports of Micro Expansion Boards. Connecting Micro Bit Lights to Micro Expansion Boards is similar to connecting lights and cables to Strip Lights. With the expansion board facing up, ensure the side of the connector with the wires exposed is facing down. If a plug won't fit easily into a port connector, do not force it. Use your fingernail to push the plastic part of the connector to the micro port.

Before You Begin

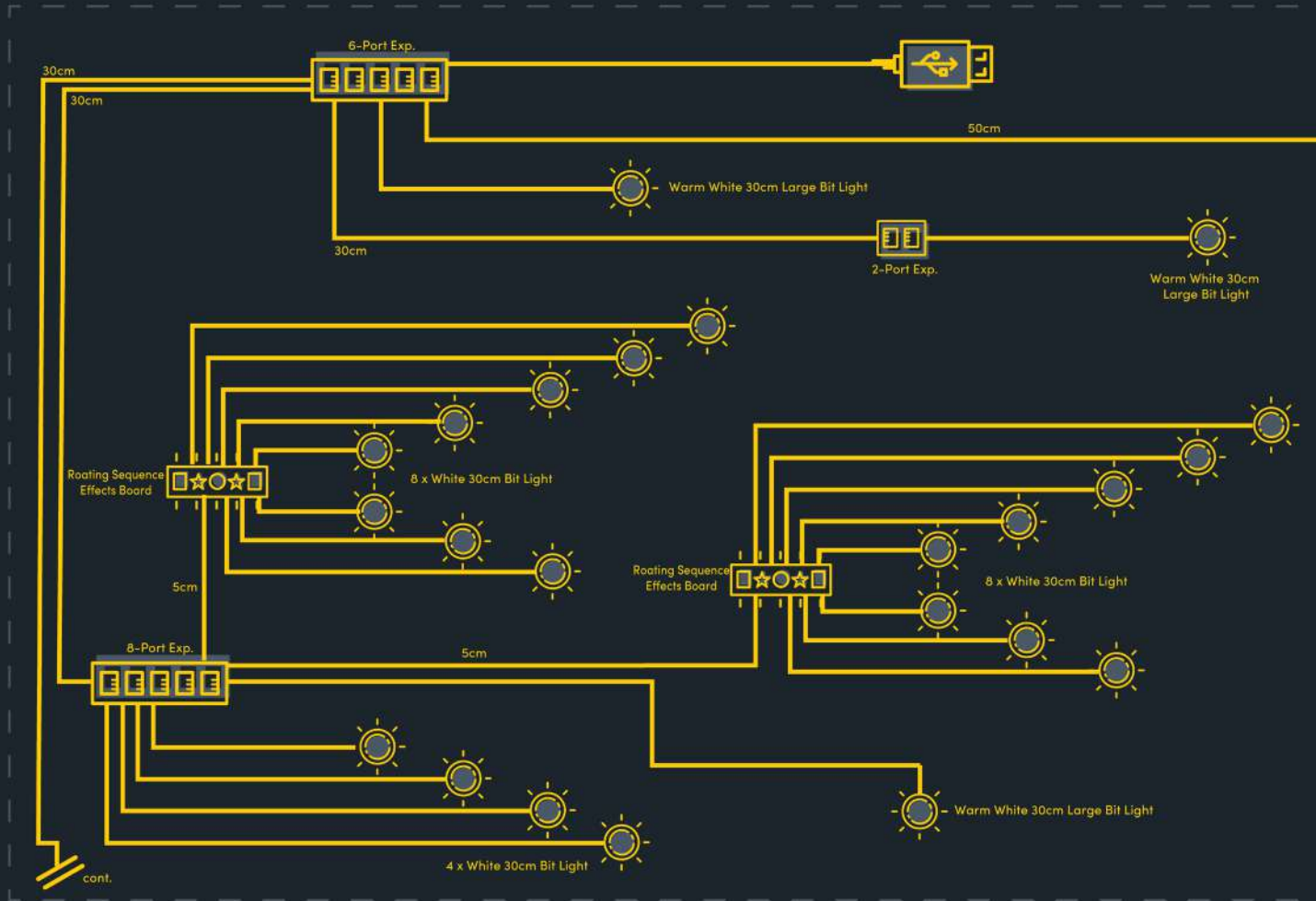
Installing Bit Lights Under Lego® Bricks And Plates

When installing Bit Lights under LEGO® pieces, ensure they are placed the correct way up (Yellow LED component exposed). You can either place them directly on top of LEGO® studs or in between.

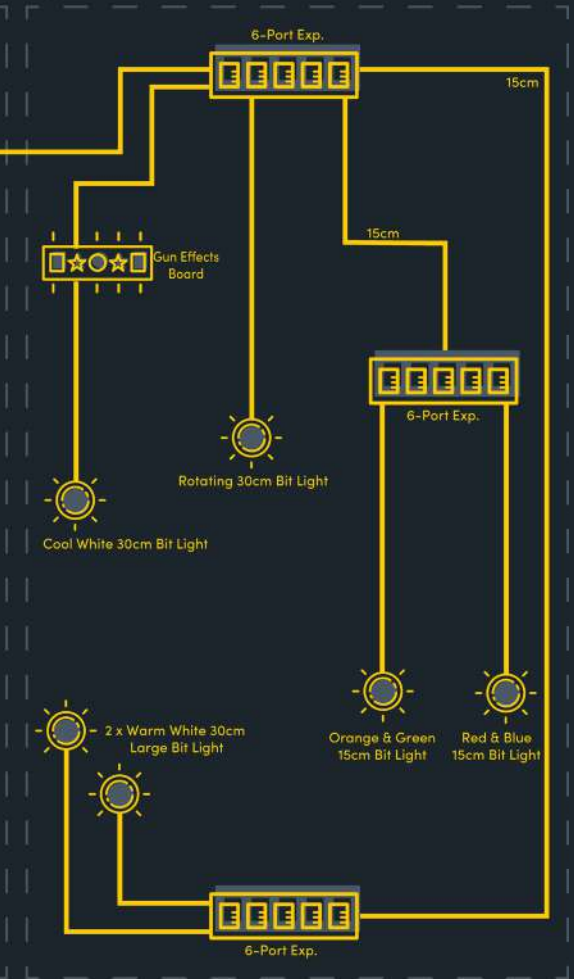


BLUEPRINT

Middle Section

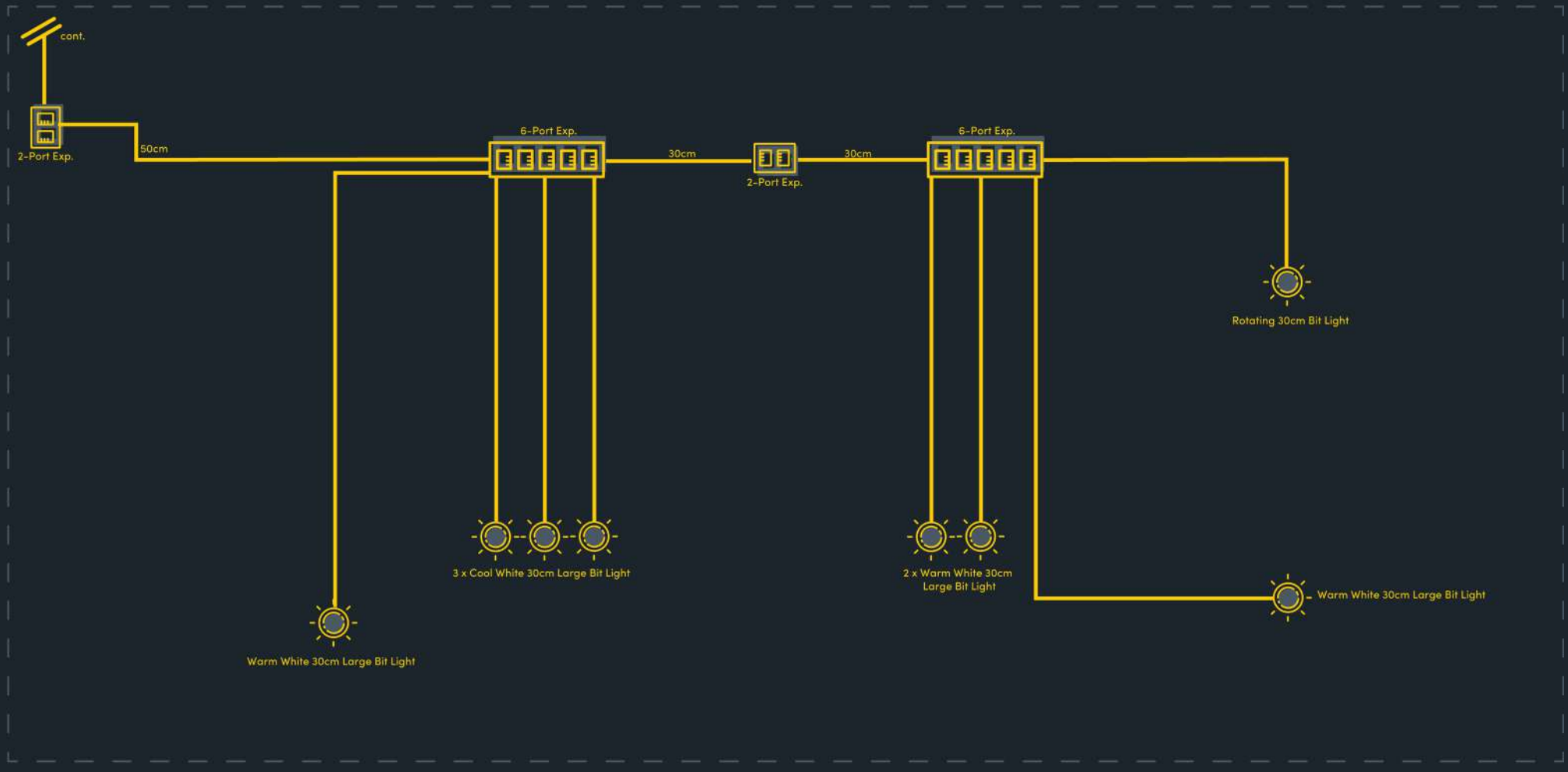


Right Section



BLUEPRINT

Top Section





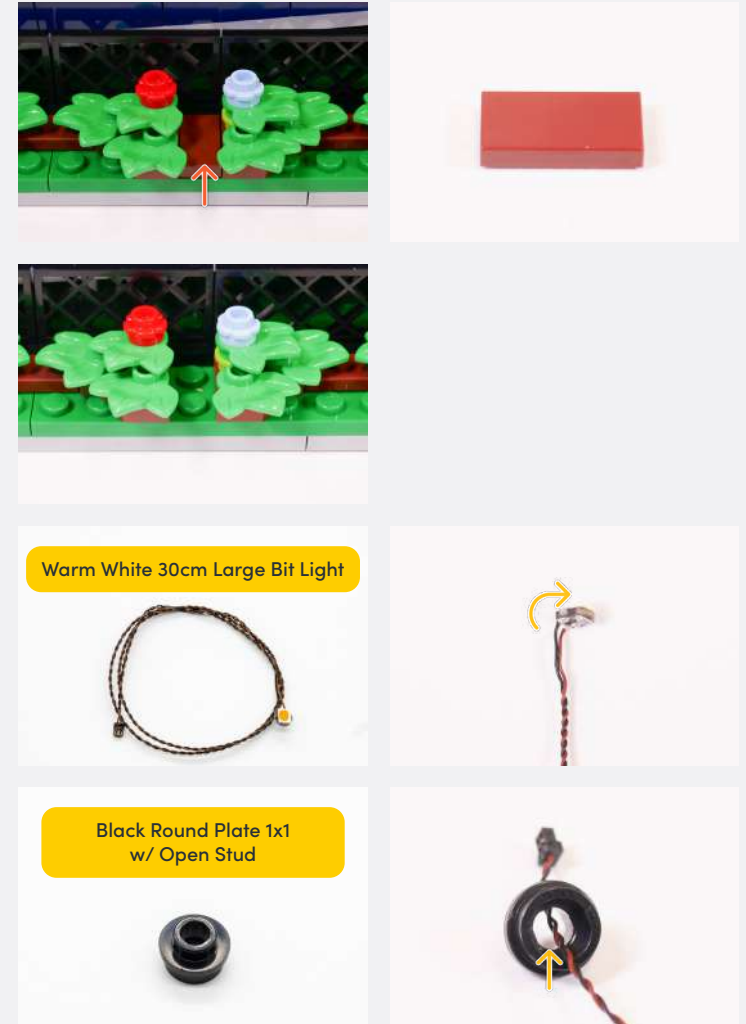
INSTRUCTIONS

To ensure a smooth installation of your light kit, please read and follow each step carefully. If you run into any issues, please refer to the online troubleshooting guide.

1

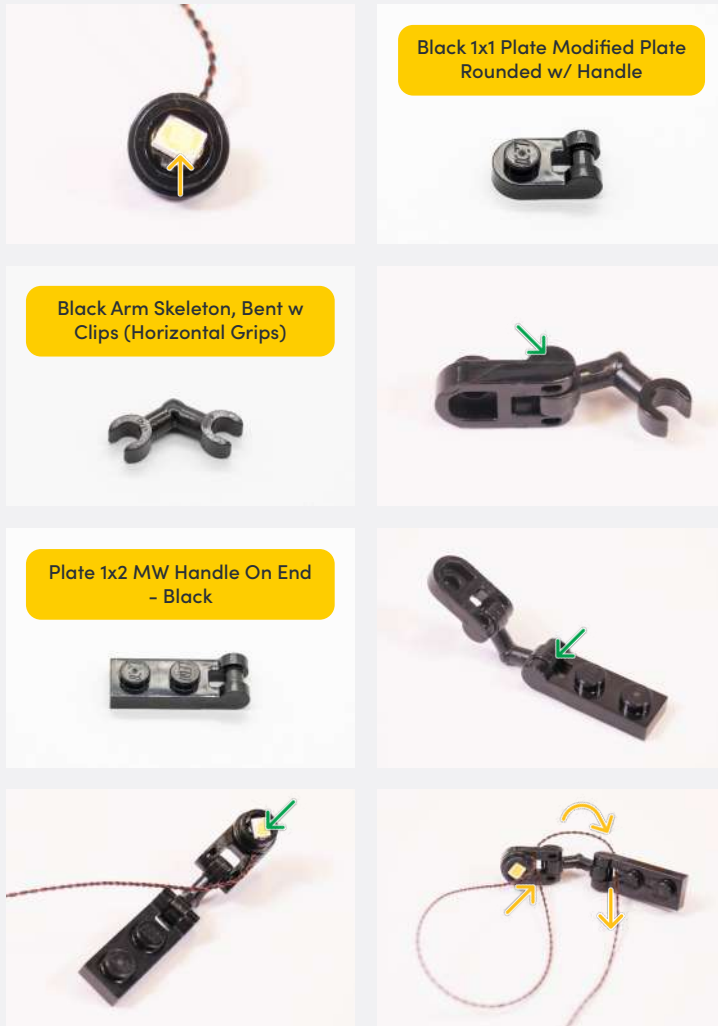


2

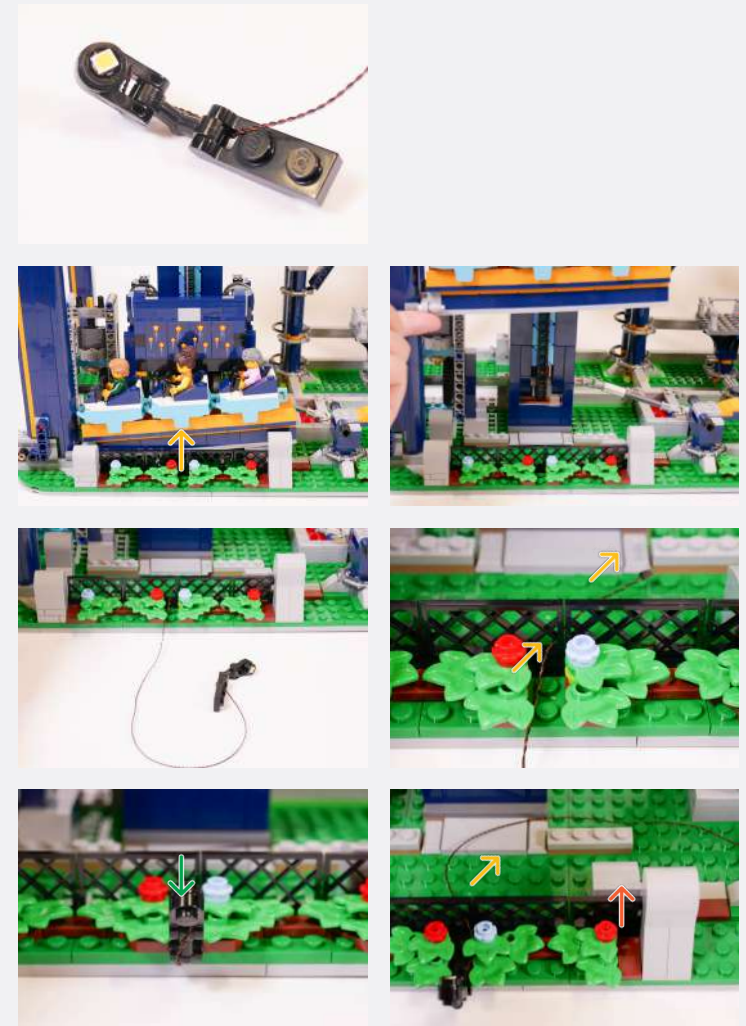


Legend

- DISCONNECT
- CONNECT / RECONNECT
- TURN / FLIP
- DIRECTIONAL
- TWIST / BRAID
- POWER ON TEST
- NOTE ICON

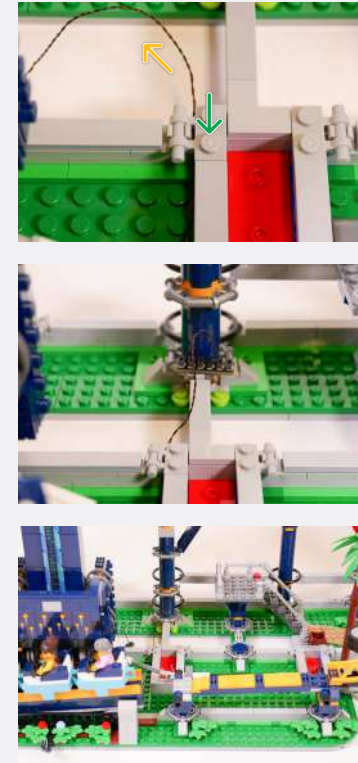
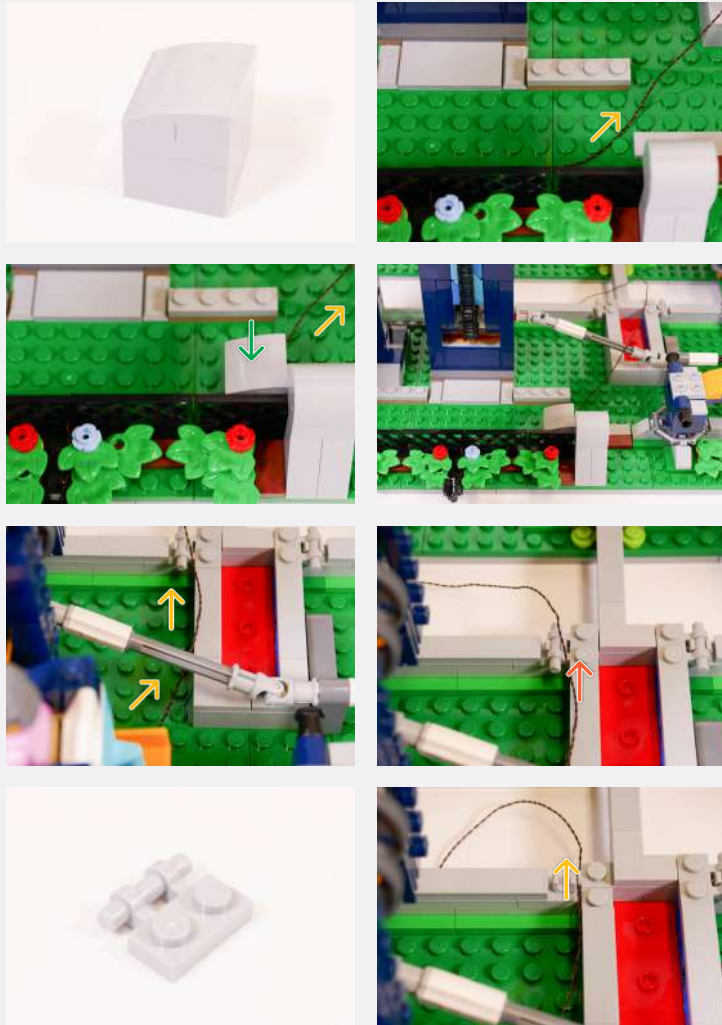


3



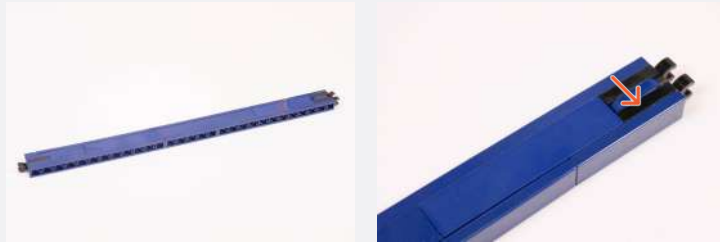
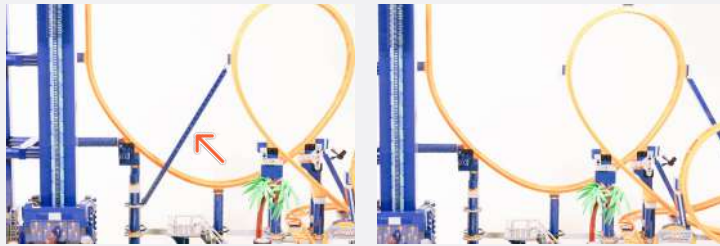
Legend

- DISCONNECT
- CONNECT / RECONNECT
- TURN / FLIP
- DIRECTIONAL
- TWIST / BRAID
- POWER ON TEST
- NOTE ICON



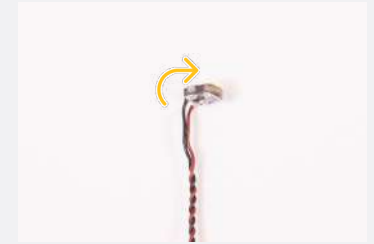
Legend → DISCONNECT → CONNECT / RECONNECT ↻ TURN / FLIP → DIRECTIONAL ↻ TWIST / BRAID ✨ POWER ON TEST 📝 NOTE ICON

4



5

Warm White 30cm Large Bit Light



Black Round Plate 1x1 w/ Open Stud



2 x Black 1x1 Plate Modified Plate Rounded w/ Handle

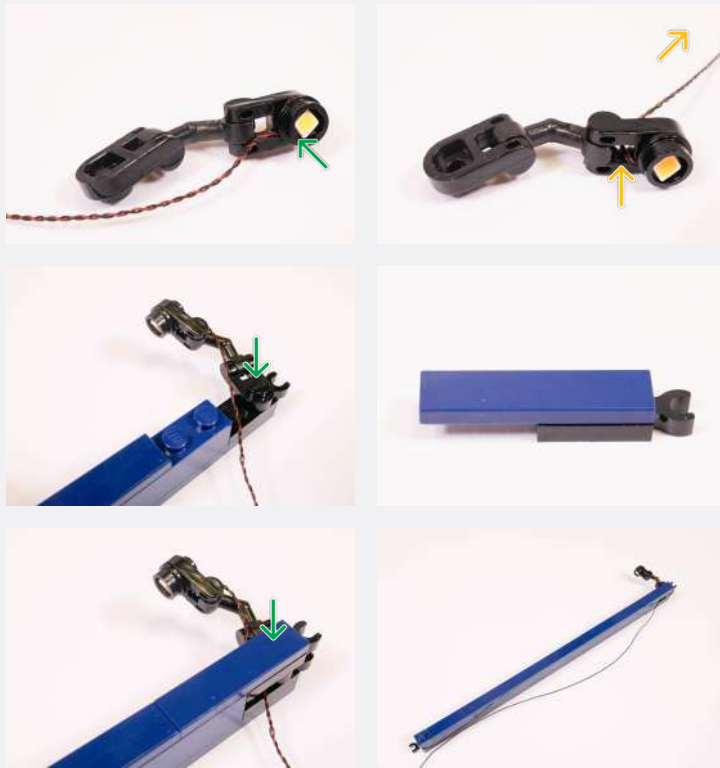


Black Arm Skeleton, Bent w/ Clips at 90 Degrees

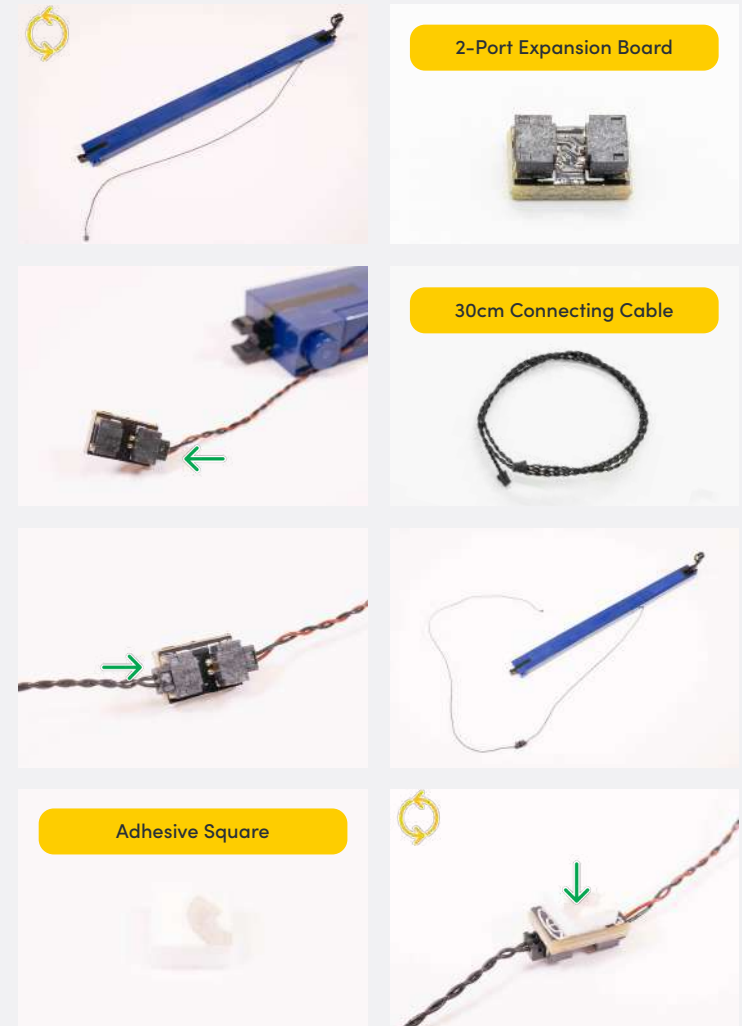


Legend

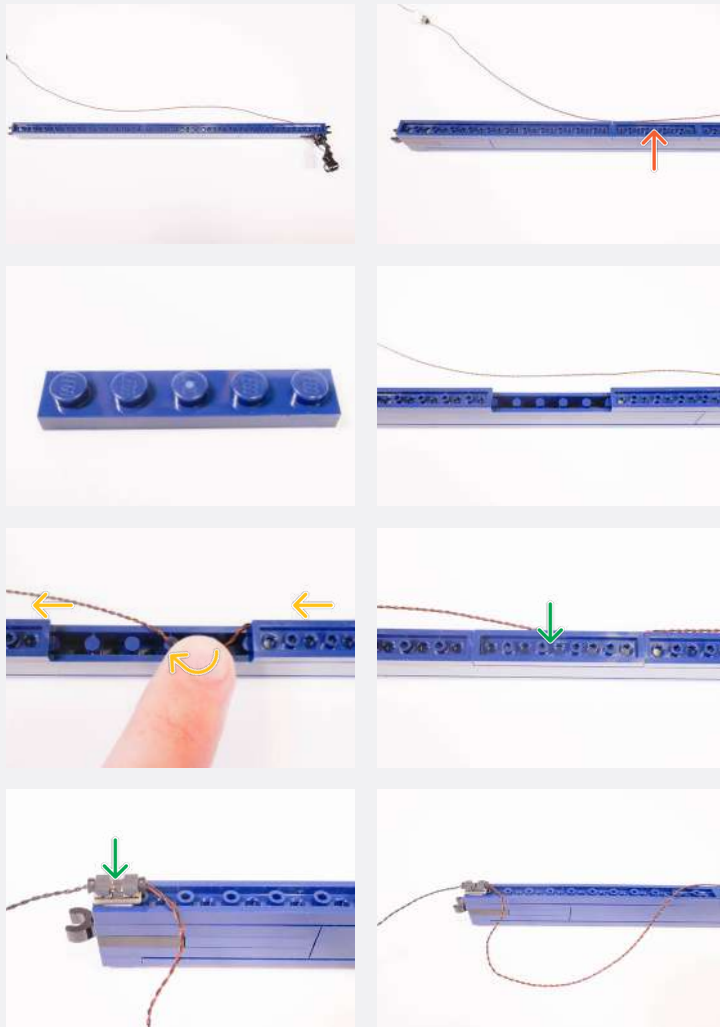
- DISCONNECT
- CONNECT / RECONNECT
- TURN / FLIP
- DIRECTIONAL
- TWIST / BRAID
- POWER ON TEST
- NOTE ICON



6

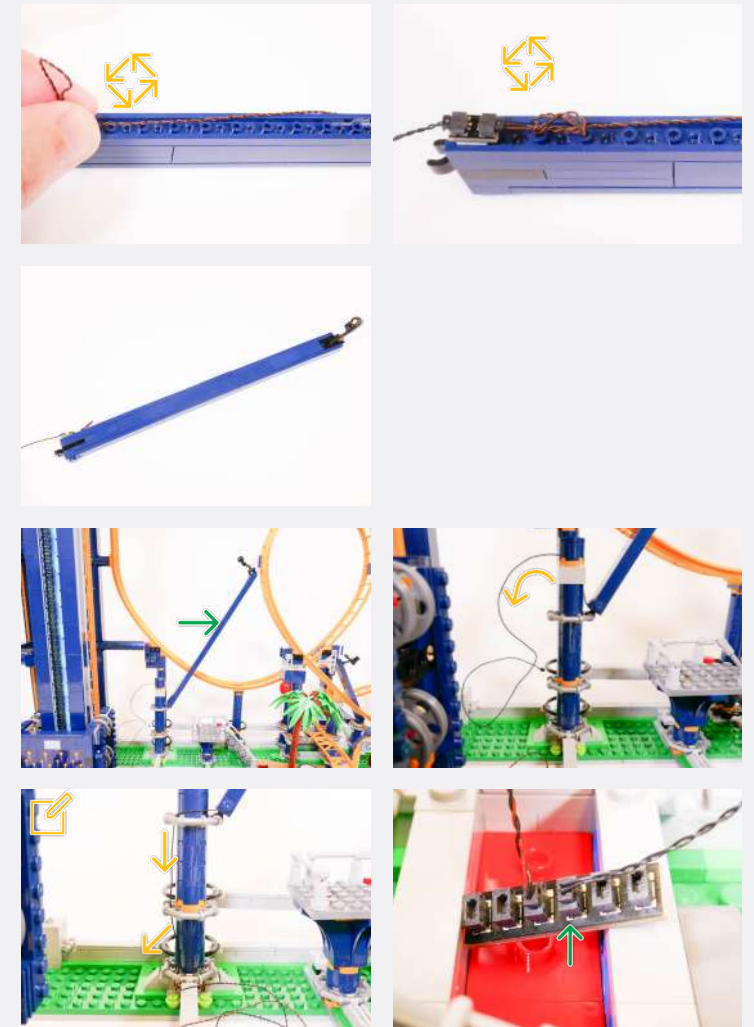


Legend → DISCONNECT → CONNECT / RECONNECT ↻ TURN / FLIP → DIRECTIONAL ↺ TWIST / BRAID ✨ POWER ON TEST 📝 NOTE ICON



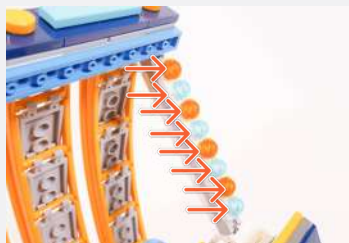
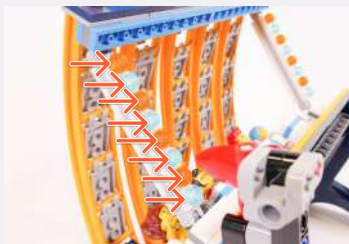
7

Thread the cable in between the gap of the pole and rings

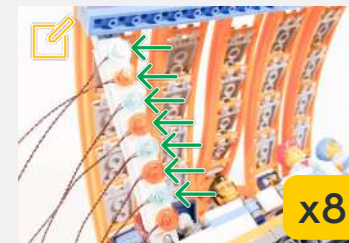


Legend DISCONNECT CONNECT / RECONNECT TURN / FLIP DIRECTIONAL TWIST / BRAID POWER ON TEST NOTE ICON

8



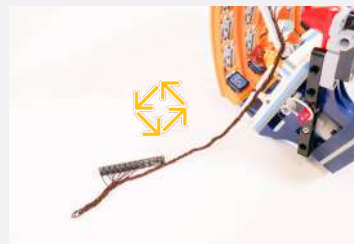
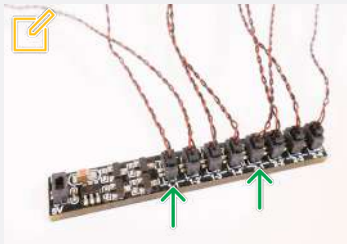
Repeat this for the rest of the pillar as shown



Legend → DISCONNECT → CONNECT / RECONNECT ↻ TURN / FLIP → DIRECTIONAL ↻ TWIST / BRAID ✨ POWER ON TEST 📌 NOTE ICON

9

Rotating Sequence Effects Board

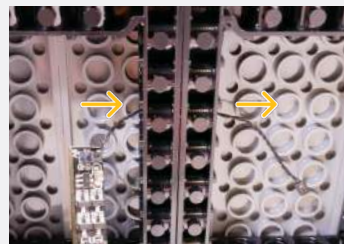
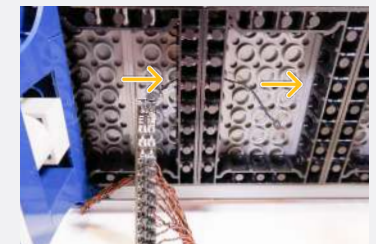


✎ Connect all the lights underneath the Orange plates to Output 1 starting from the bottom of the pillar (e.g. first Orange to port 1-1, second Orange to port 1-2)

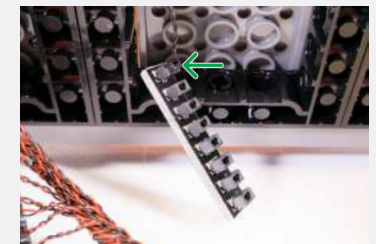
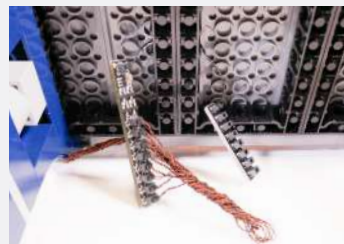
✎ Connect all the lights underneath the Blue plates to Output 2 starting from the bottom of the pillar (e.g. first Blue to port 2-1, second Blue to port 2-2)



5cm Connecting Cable



8-Port Expansion Board



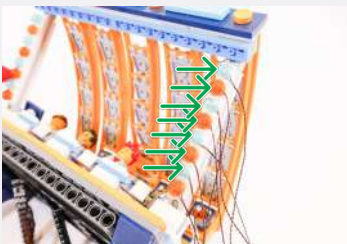
Legend

- DISCONNECT
- CONNECT / RECONNECT
- TURN / FLIP
- DIRECTIONAL
- TWIST / BRAID
- POWER ON TEST
- NOTE ICON

10



White 30cm Bit Light



✂ The same process is repeated on the right side

✂ Repeat this for the rest of the pillar as shown

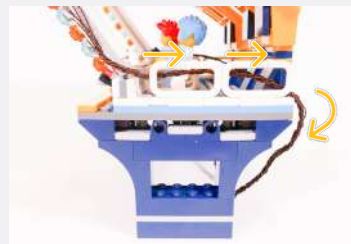
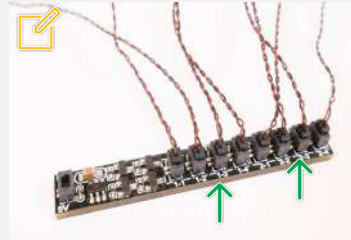
11

Rotating Sequence Effects Board



✂ Connect all the lights underneath the Orange plates to Output 1 starting from the bottom of the pillar (e.g. first orange to port 1-1, second orange to port 1-2)

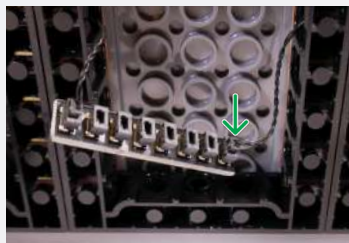
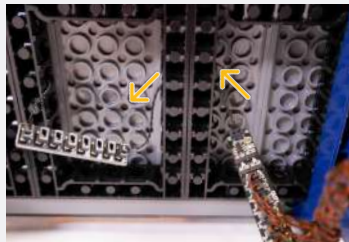
✂ Connect all the lights underneath the Blue plates to Output 2 starting from the bottom of the pillar (e.g. first Blue to port 2-1, second Blue to port 2-2)



Legend → DISCONNECT → CONNECT / RECONNECT ↻ TURN / FLIP → DIRECTIONAL ↔ TWIST / BRAID ✨ POWER ON TEST ✂ NOTE ICON



5cm Connecting Cable



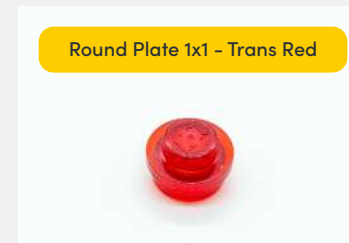
12



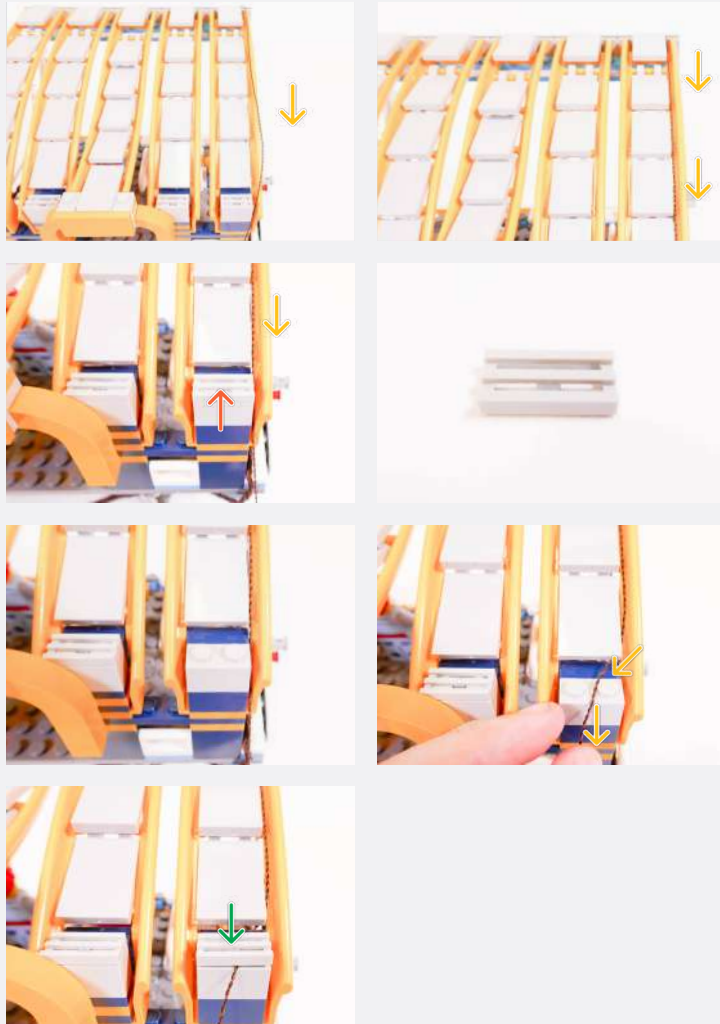
White 30cm Bit Light



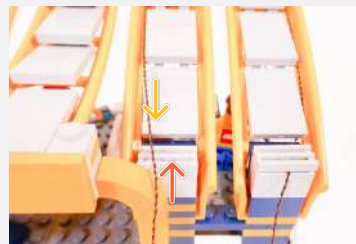
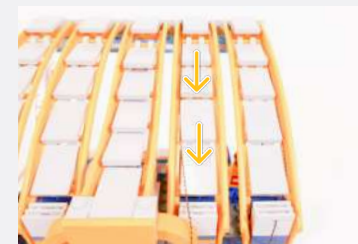
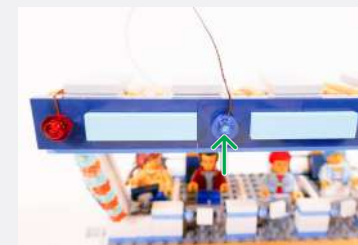
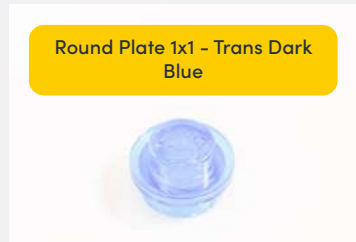
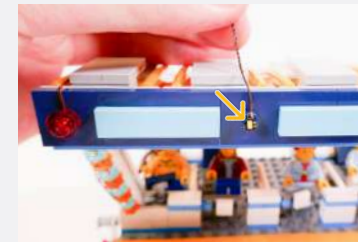
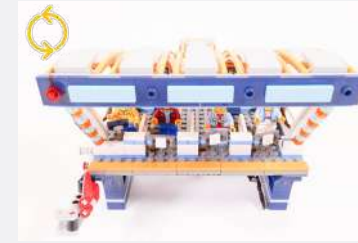
Round Plate 1x1 - Trans Red



Legend → DISCONNECT → CONNECT / RECONNECT ↻ TURN / FLIP → DIRECTIONAL ↻ TWIST / BRAID * POWER ON TEST 📝 NOTE ICON

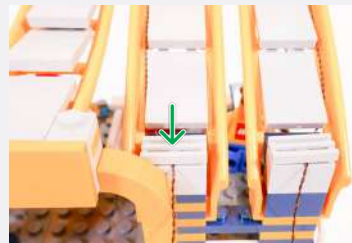
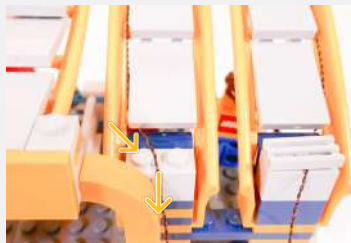


12

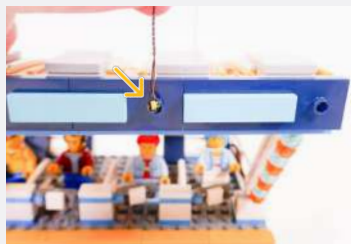


Legend → DISCONNECT → CONNECT / RECONNECT ↻ TURN / FLIP → DIRECTIONAL ↻ TWIST / BRAID * POWER ON TEST 📝 NOTE ICON

13



White 30cm Bit Light












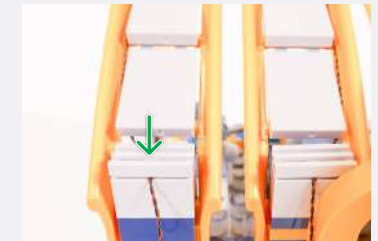

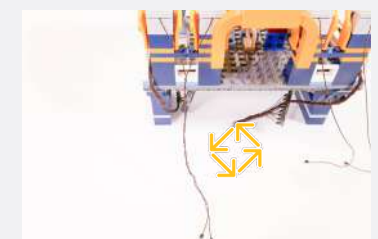
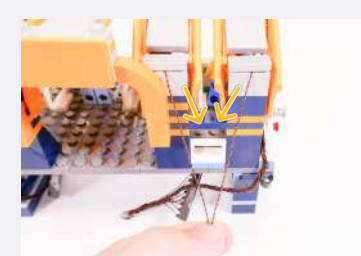

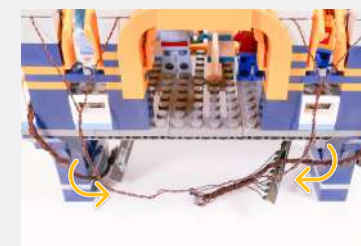
Round Plate 1x1 - Trans Green



Legend → DISCONNECT → CONNECT / RECONNECT ↻ TURN / FLIP → DIRECTIONAL ↻ TWIST / BRAID * POWER ON TEST 📝 NOTE ICON

14

<p>White 30cm Bit Light</p> 	
<p>Round Plate 1x1 - Trans Pink</p> 	
	
	

Legend → DISCONNECT → CONNECT / RECONNECT ↻ TURN / FLIP → DIRECTIONAL ↻ TWIST / BRAID * POWER ON TEST 📝 NOTE ICON

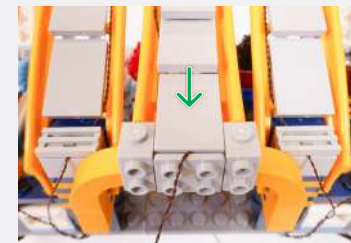
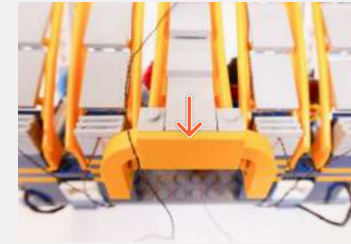
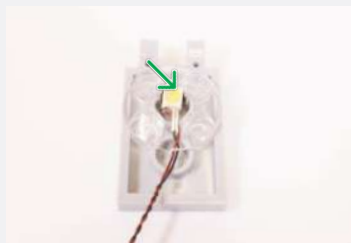
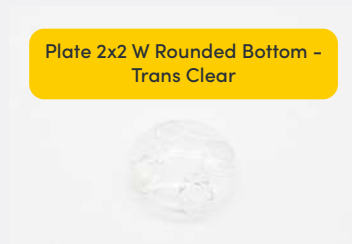
15



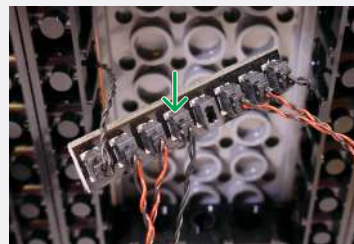
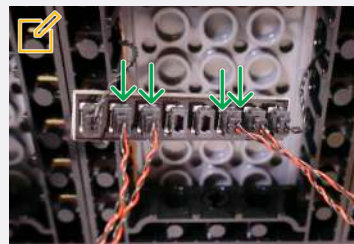
Warm White 30cm Large Bit Light



Plate 2x2 W Rounded Bottom - Trans Clear



Legend → DISCONNECT → CONNECT / RECONNECT ↻ TURN / FLIP → DIRECTIONAL ↺ TWIST / BRAID * POWER ON TEST 📝 NOTE ICON

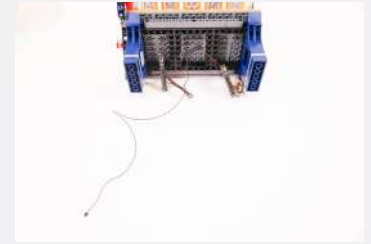
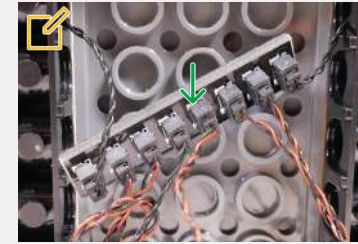


30cm Connecting Cable

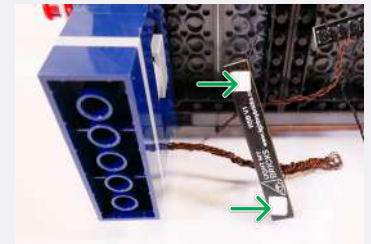
16

Connect the four Bit Lights beneath the Trans Coloured Round Plates to the 8-Port Expansion Board

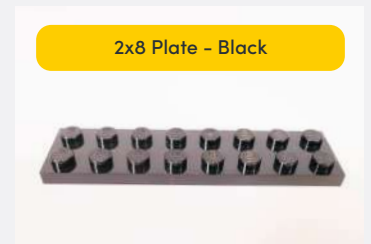
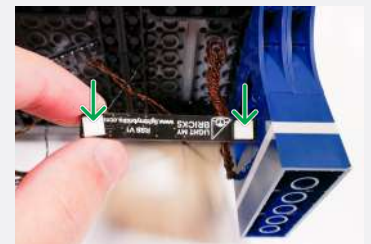
Connect the Large Bit Light from step 15 the to the 8-Port Expansion Board



2x Adhesive Squares



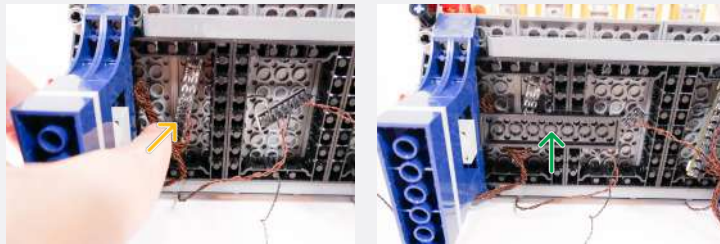
2x Adhesive Squares



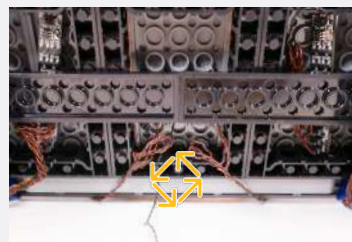
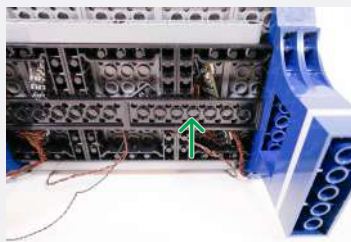
2x8 Plate - Black

Legend

- DISCONNECT
- CONNECT / RECONNECT
- TURN / FLIP
- DIRECTIONAL
- TWIST / BRAID
- POWER ON TEST
- NOTE ICON

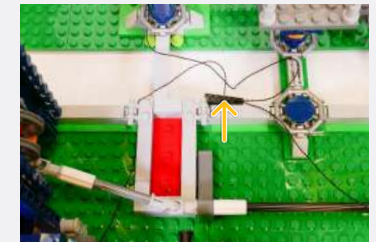
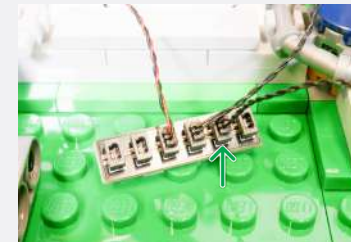
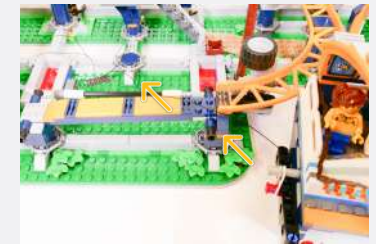


2x8 Plate - Black

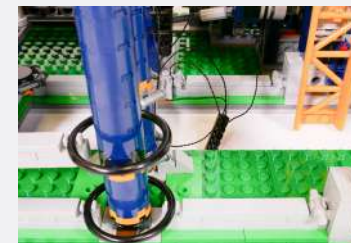


✂️ Twist all the cables from the 8-Port Expansion Board except for the Connecting Cable

17



18



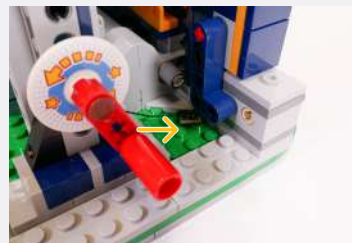
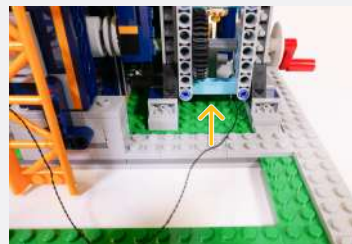
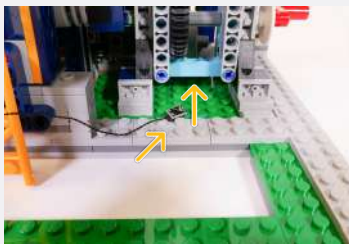
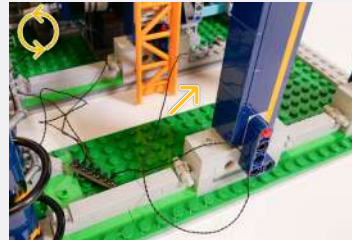
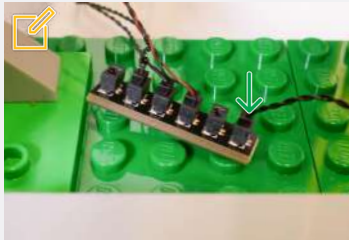
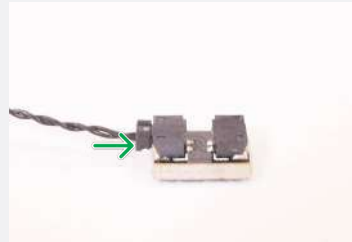
30cm Connecting Cable



Legend

- DISCONNECT
- CONNECT / RECONNECT
- TURN / FLIP
- DIRECTIONAL
- TWIST / BRAID
- POWER ON TEST
- NOTE ICON

2-Port Expansion Board

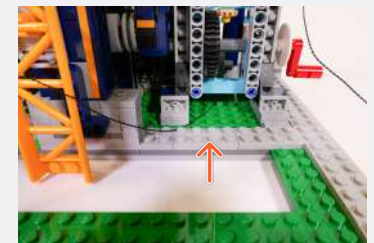
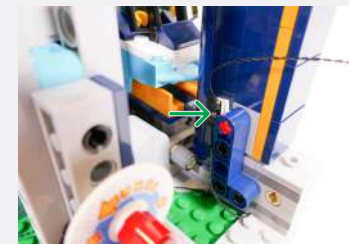
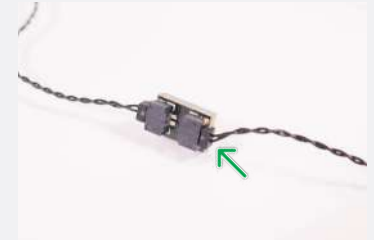


Connect the the other end of the 30cm Connecting Cable to the 6-Port Expansion Board

Adhesive Square



50cm Connecting Cable



Legend

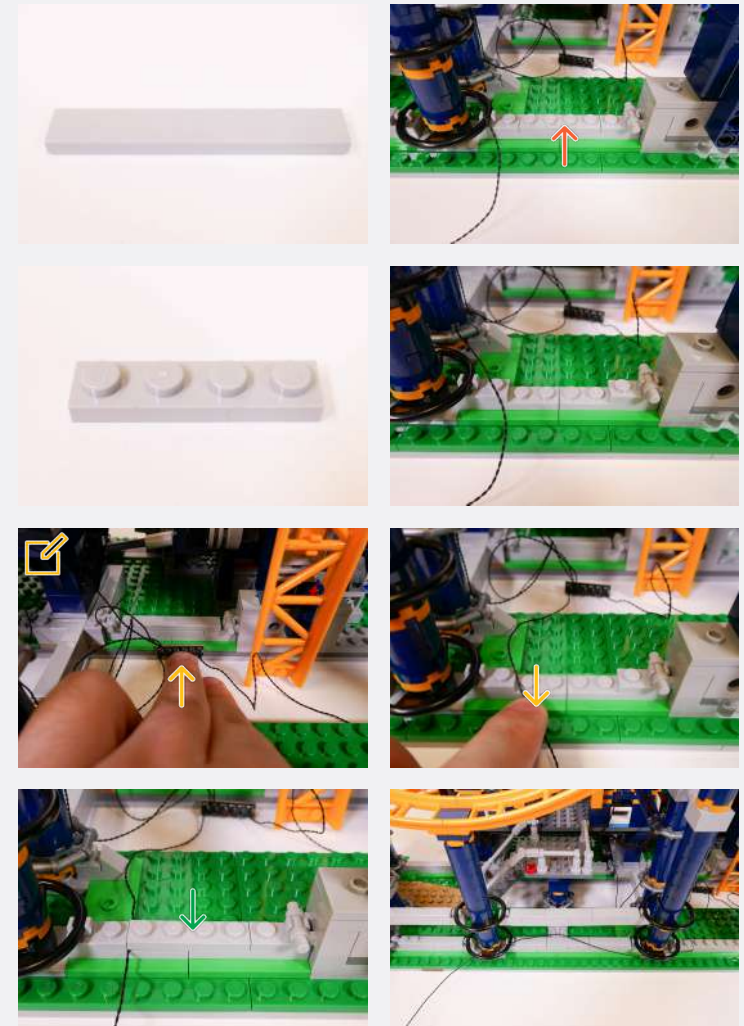
- DISCONNECT
- CONNECT / RECONNECT
- TURN / FLIP
- DIRECTIONAL
- TWIST / BRAID
- POWER ON TEST
- NOTE ICON

19



50cm Connecting Cable

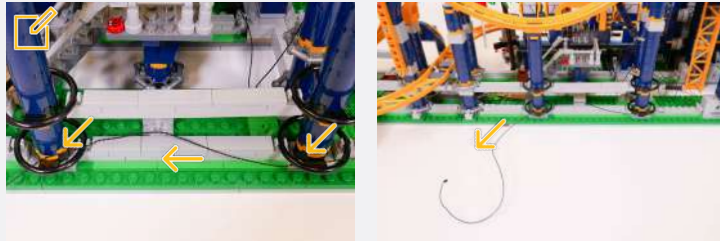
Hold the Expansion Board in the position as shown before securing the 50cm Connecting Cable beneath the tile



Legend DISCONNECT CONNECT / RECONNECT TURN / FLIP DIRECTIONAL TWIST / BRAID POWER ON TEST NOTE ICON

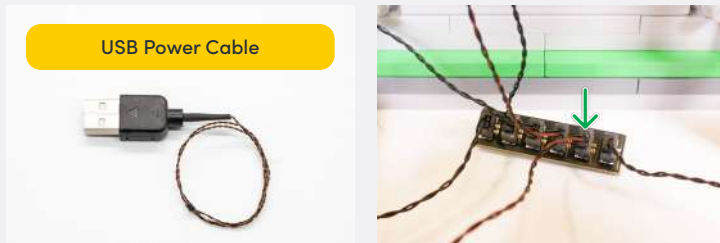
If you experience any issues with the lights not working and suspect an issue with a component, please try a different port on the expansion board to verify where the fault lies (with the light or expansion board). To correct any issues with expansion board ports, please view the section addressing expansion board issues in our troubleshooting section.

Thread the 50cm Connecting Cable through the rings as shown

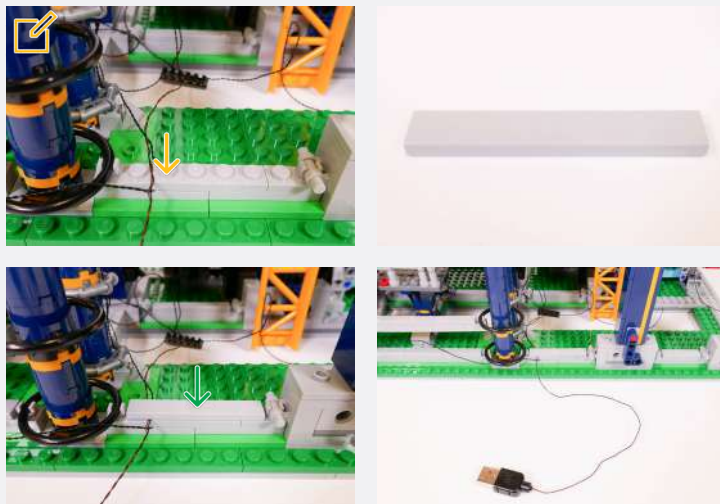


20

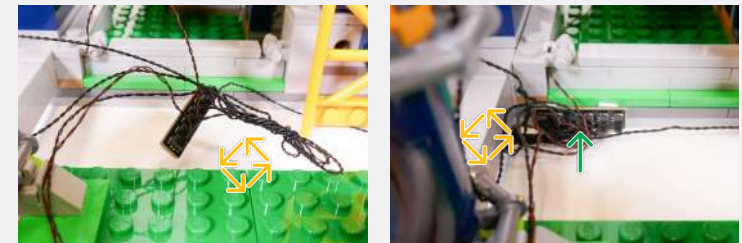
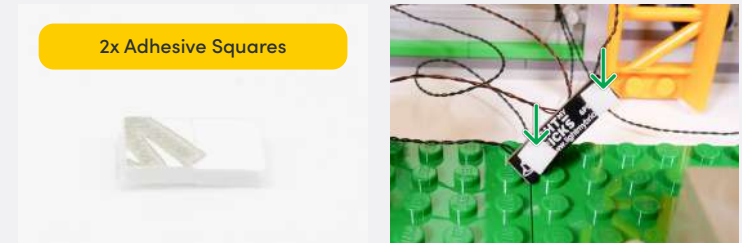
USB Power Cable



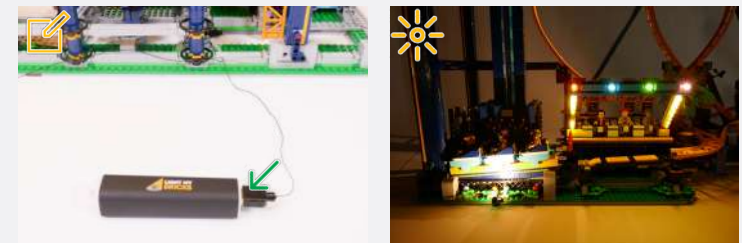
Run the USB Power Cable back inbetween the studs



2x Adhesive Squares



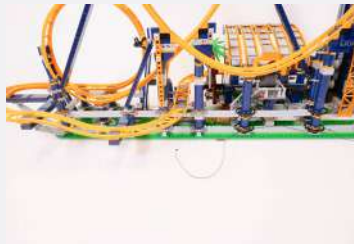
Connect the other end to a 5V USB Power Bank, 5V USB Wall Adaptor, or USB to AA Battery Pack (sold separately)



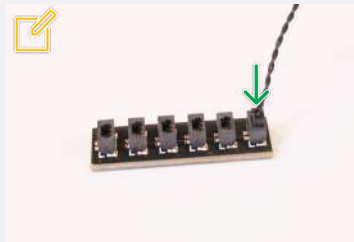
Legend

- DISCONNECT
- CONNECT / RECONNECT
- TURN / FLIP
- DIRECTIONAL
- TWIST / BRAID
- POWER ON TEST
- NOTE ICON

21

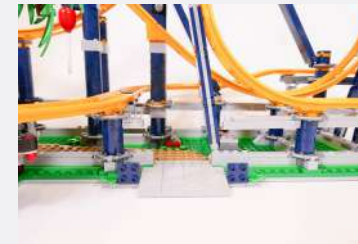


6-Port Expansion Board

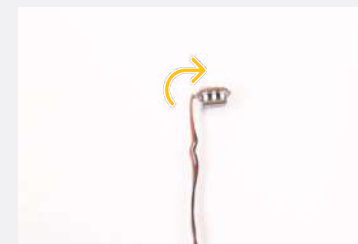


Take the other end of the 50cm Connecting Cable from Step 19

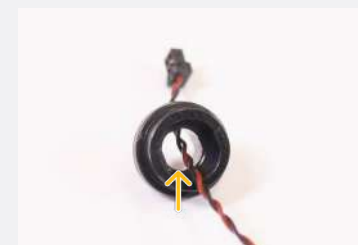
22



Red & Blue 15cm Bit Light



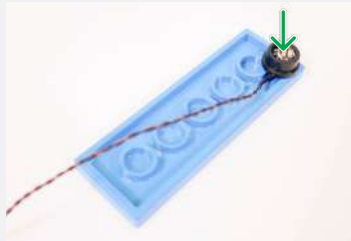
Black Round Plate 1x1 w/ Open Stud



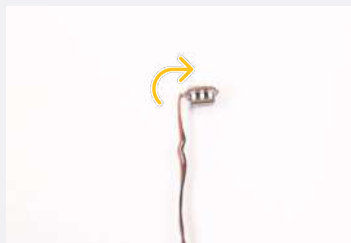
Legend



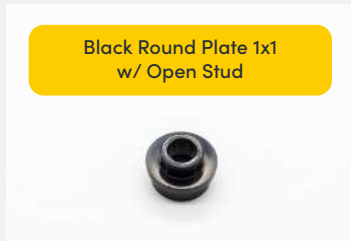
23



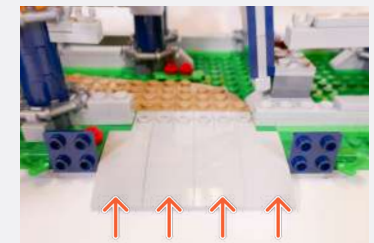
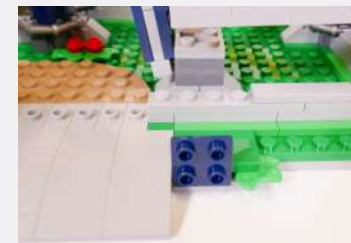
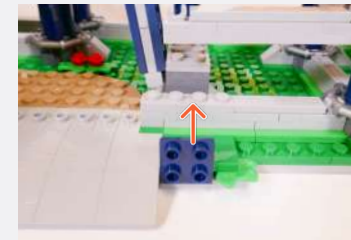
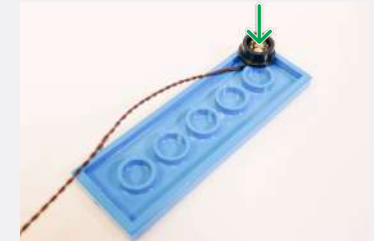
Orange & Blue 15cm Bit Light



Black Round Plate 1x1 w/ Open Stud

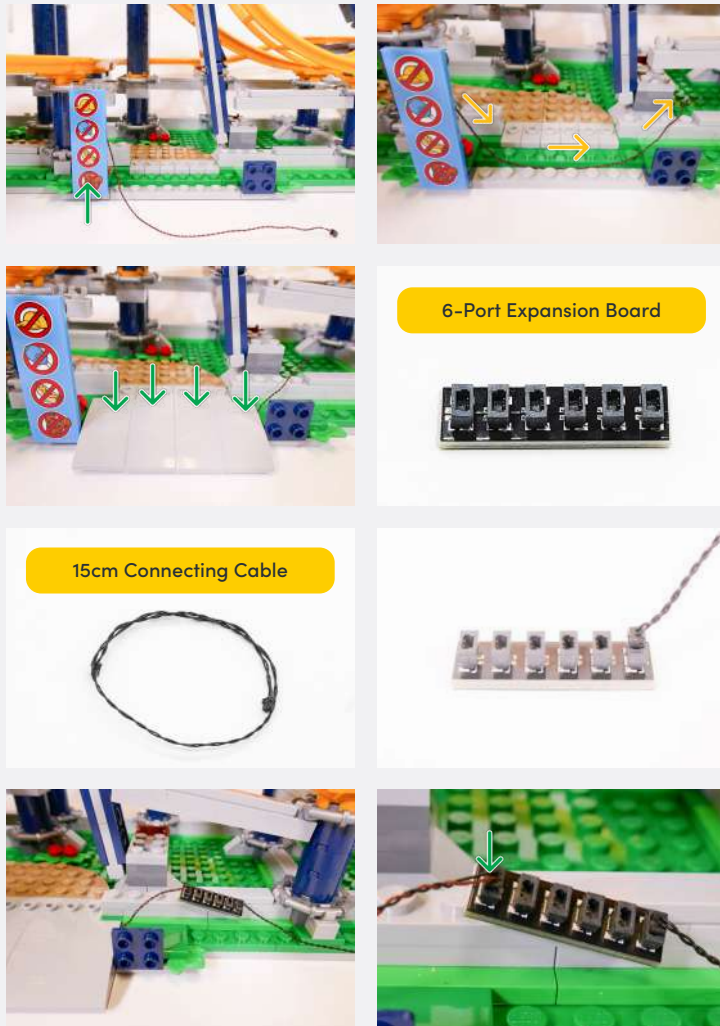


24



Legend



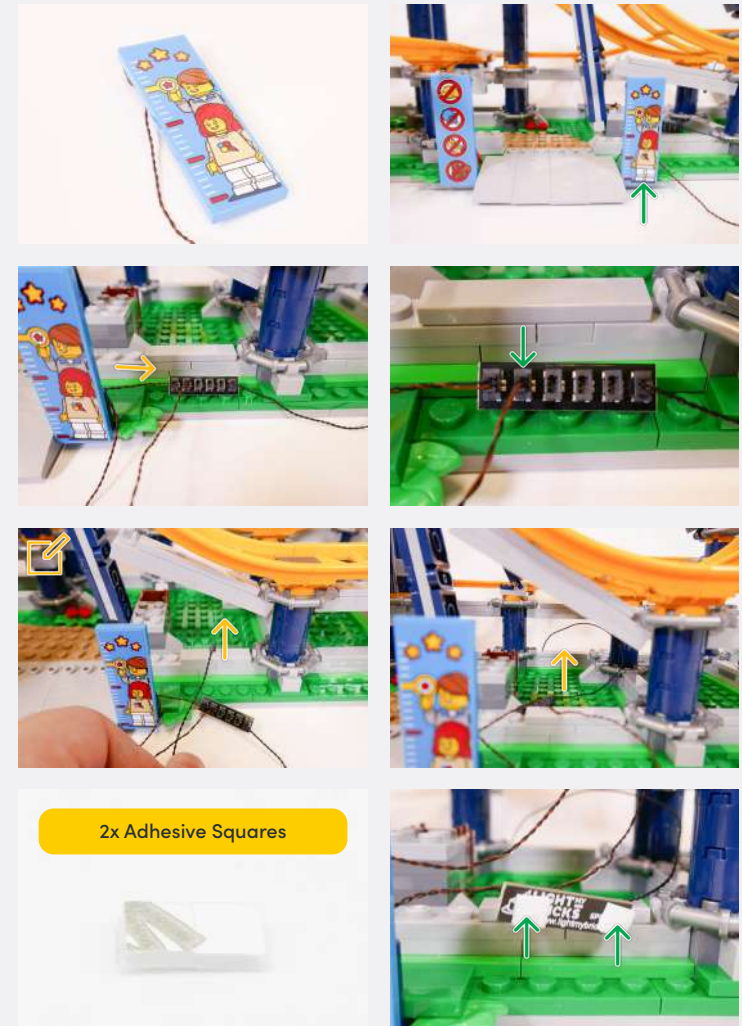


6-Port Expansion Board

15cm Connecting Cable

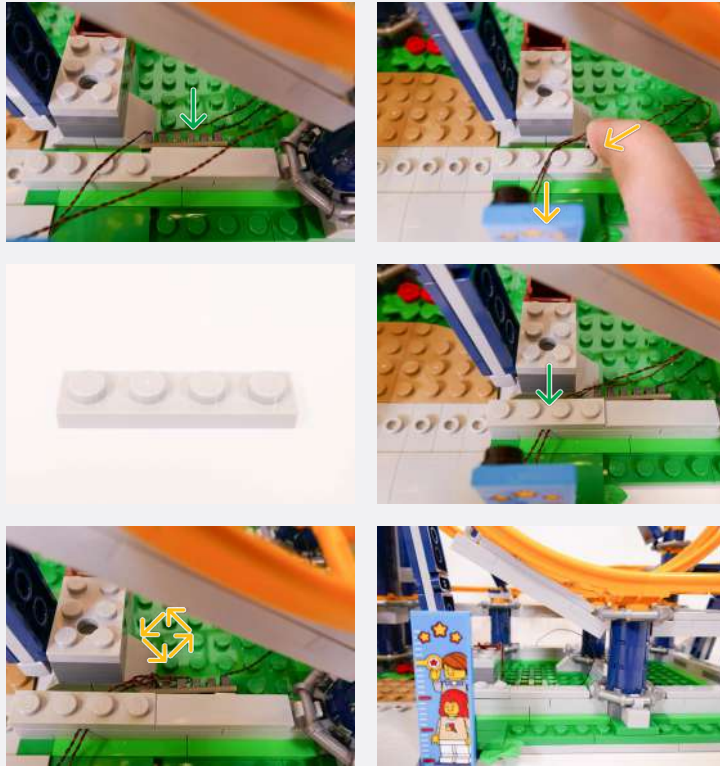
25

✎ Thread the 15cm Connecting Cable towards the back of the set



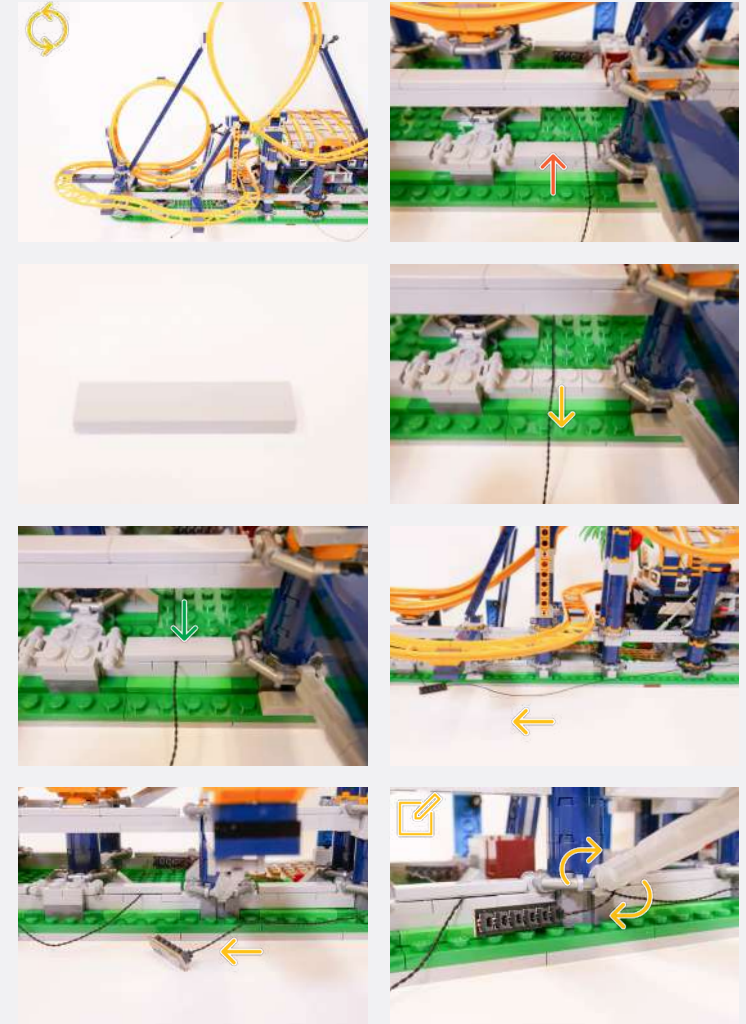
2x Adhesive Squares

Legend → DISCONNECT → CONNECT / RECONNECT ↻ TURN / FLIP → DIRECTIONAL ↻ TWIST / BRAID * POWER ON TEST ✎ NOTE ICON



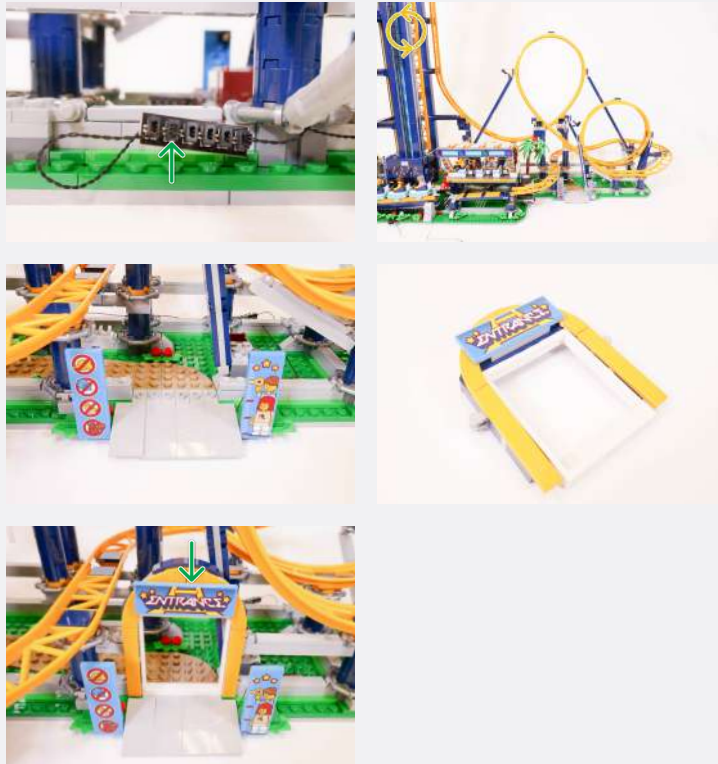
✂ Connect the other end to a 5V USB Power Bank, 5V USB Wall Adaptor, or USB to AA Battery Pack (sold separately)

26

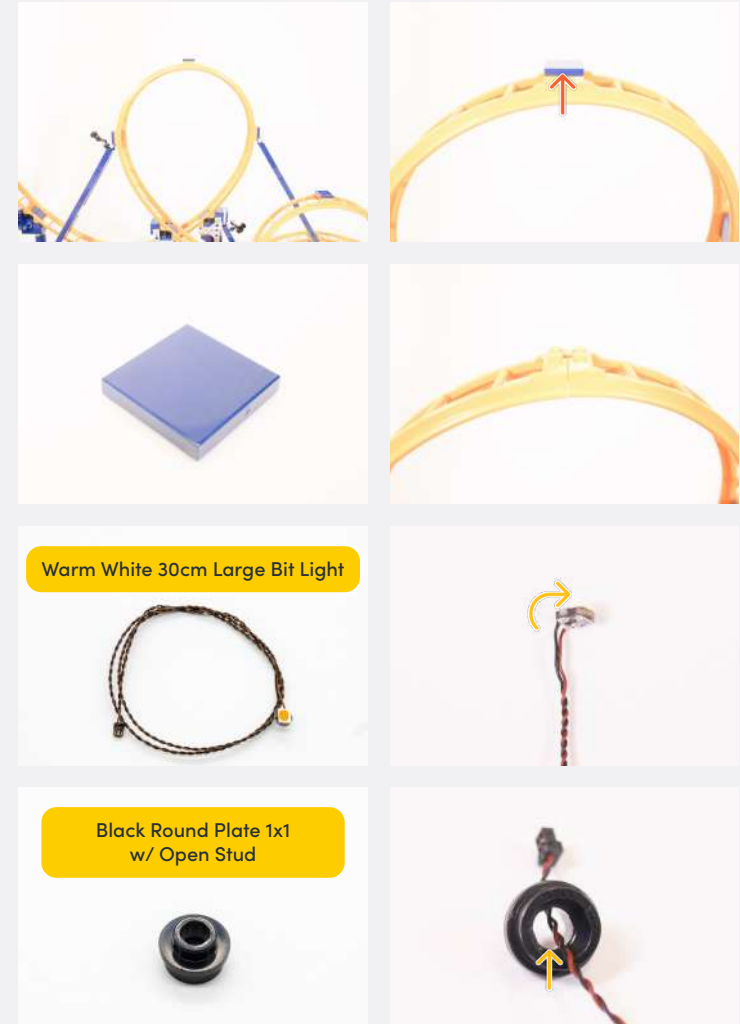


✂ Twist the cable from the Expansion Board around the pole several times to shorten the length

Legend → DISCONNECT → CONNECT / RECONNECT ↻ TURN / FLIP → DIRECTIONAL ↻ TWIST / BRAID * POWER ON TEST 📝 NOTE ICON



27



Warm White 30cm Large Bit Light







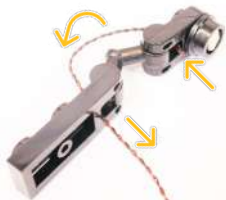



Black Round Plate 1x1 w/ Open Stud




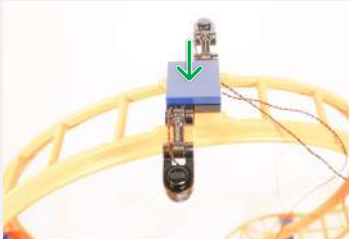





Legend

- DISCONNECT
- CONNECT / RECONNECT
- TURN / FLIP
- DIRECTIONAL
- TWIST / BRAID
- POWER ON TEST
- NOTE ICON

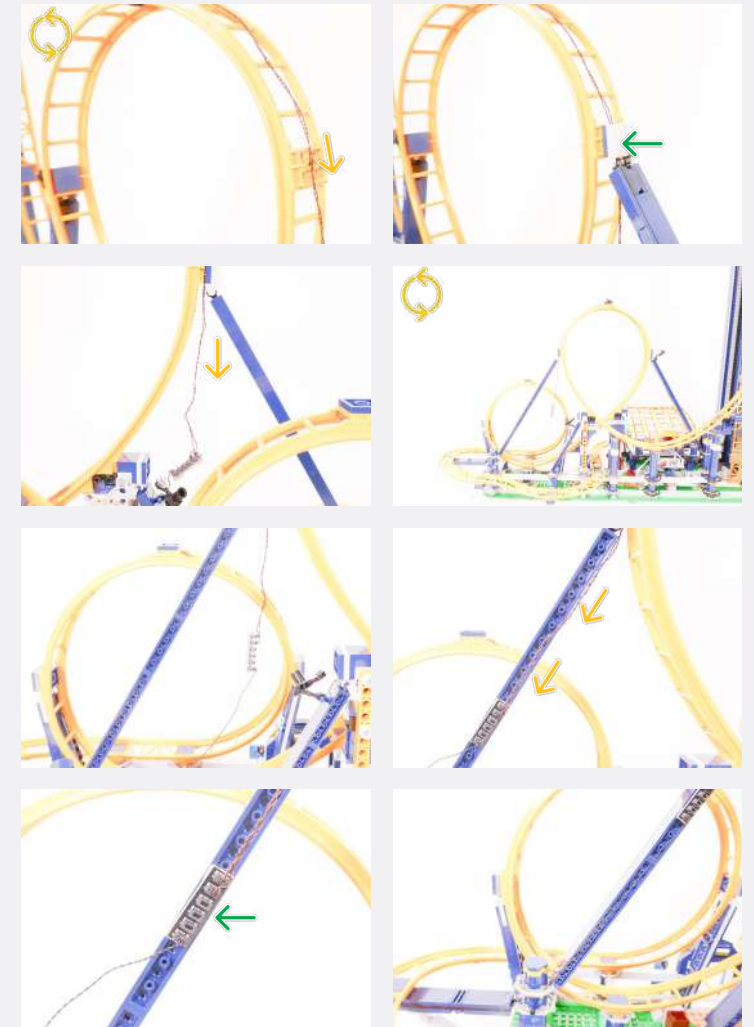
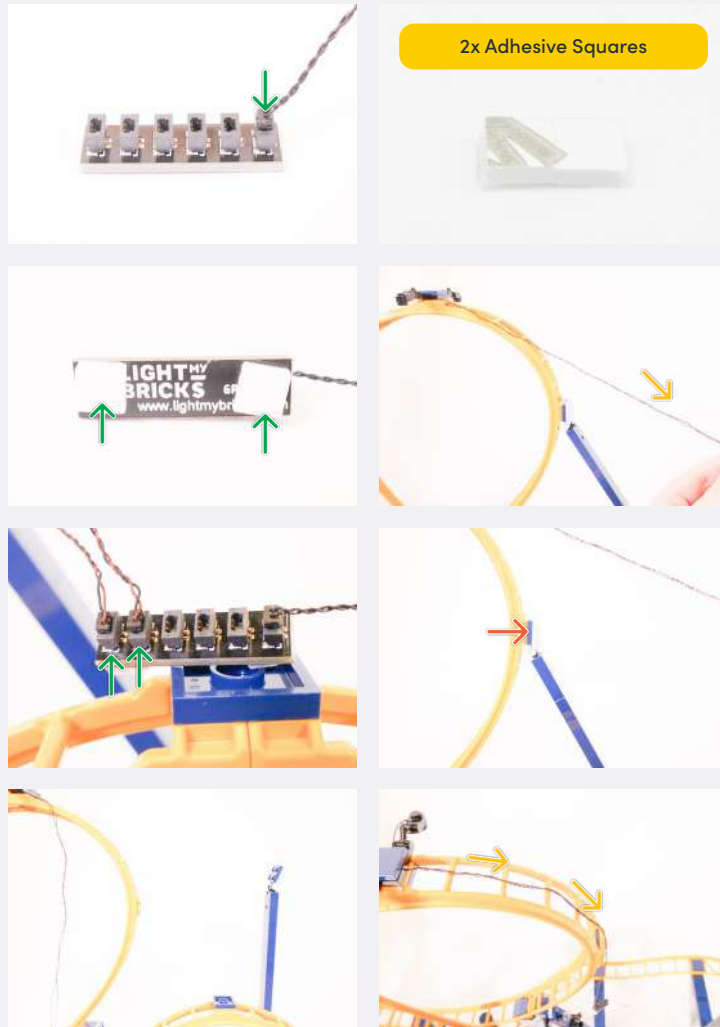
<p>Black 1x1 Plate Modified Plate Rounded w/ Handle</p> 	<p>Black Arm Skeleton, Bent w Clips (Horizontal Grips)</p> 
	<p>Plate 1x2 MW Handle On End - Black</p> 
	
	

28

 <p>x2</p>	
	
	
<p>6-Port Expansion Board</p> 	<p>30cm Connecting Cable</p> 

Legend

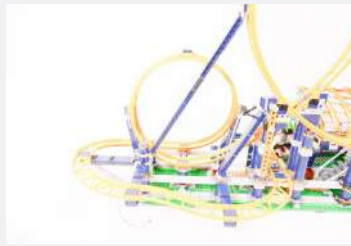
- DISCONNECT
- CONNECT / RECONNECT
- TURN / FLIP
- DIRECTIONAL
- TWIST / BRAID
- POWER ON TEST
- NOTE ICON



Legend

- DISCONNECT
- CONNECT / RECONNECT
- TURN / FLIP
- DIRECTIONAL
- TWIST / BRAID
- POWER ON TEST
- NOTE ICON

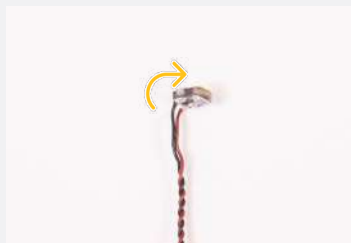
✂ Thread the Connecting Cable through the rings as shown



29



Warm White 30cm Large Bit Light



Black Round Plate 1x1 w/ Open Stud



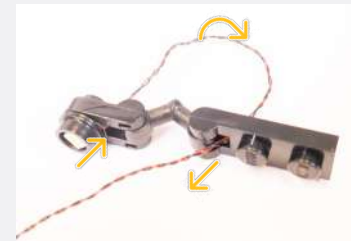
Black 1x1 Plate Modified Plate Rounded w/ Handle



Black Arm Skeleton, Bent w/ Clips (Horizontal Grips)



Plate 1x2 MW Handle On End - Black



Legend



CONNECT / RECONNECT



TURN / FLIP



DIRECTIONAL



TWIST / BRAID

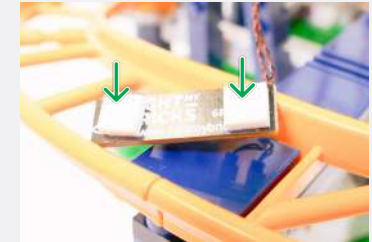
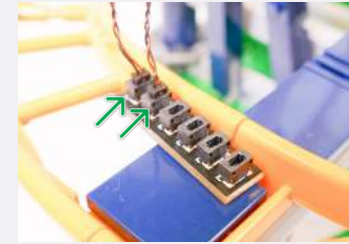
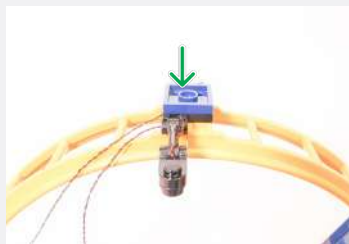
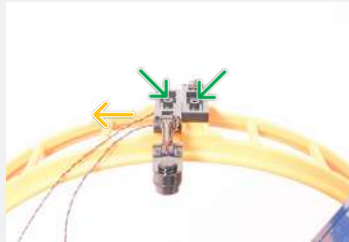
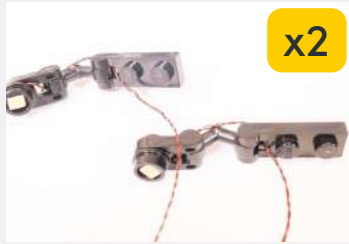


POWER ON TEST



NOTE ICON

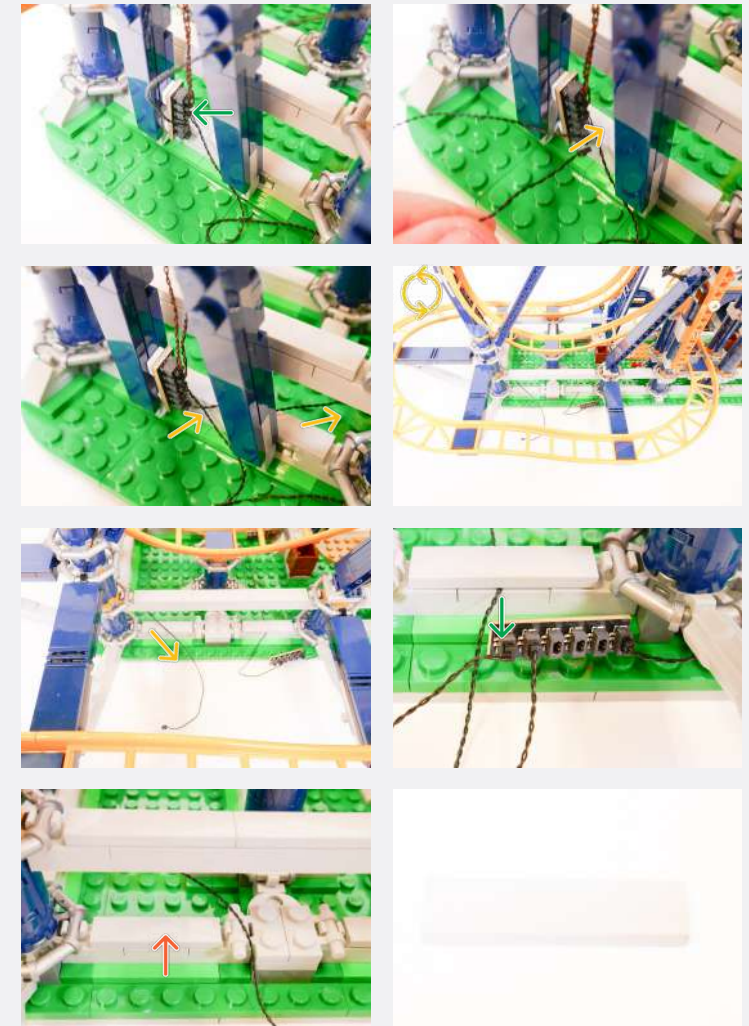
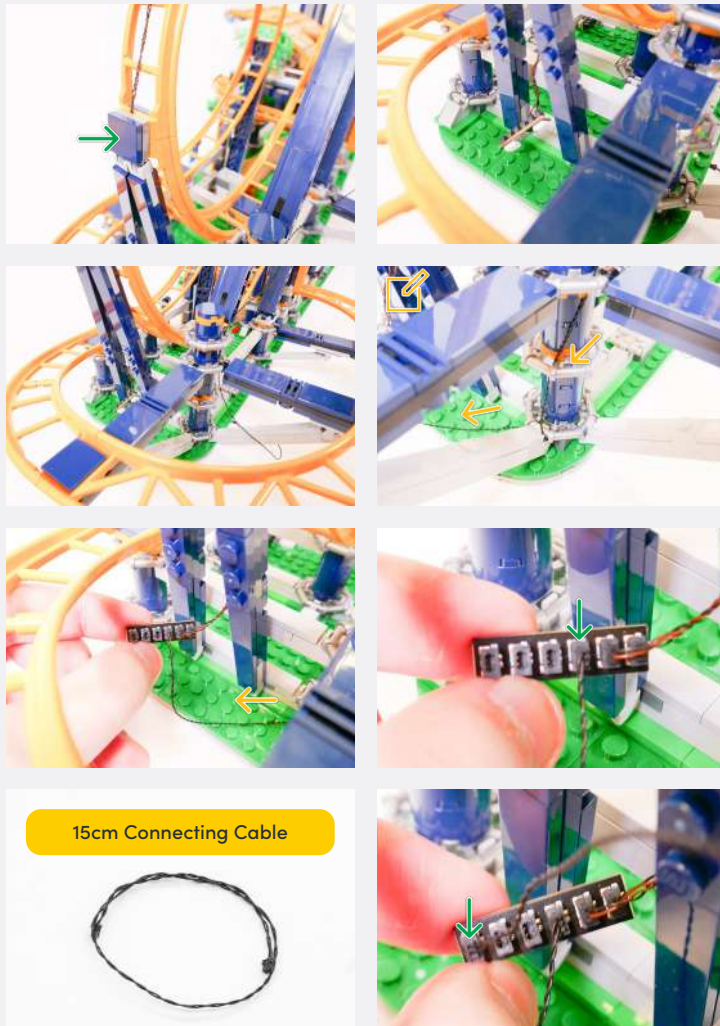
30



Legend → DISCONNECT → CONNECT / RECONNECT ↻ TURN / FLIP → DIRECTIONAL ↻ TWIST / BRAID ✨ POWER ON TEST 📝 NOTE ICON

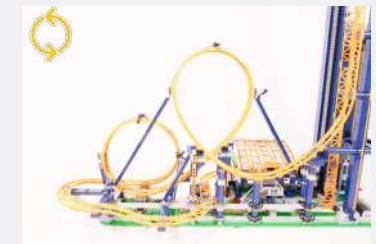
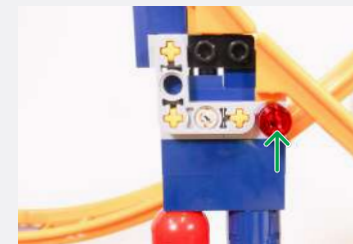
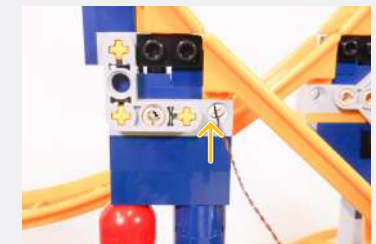
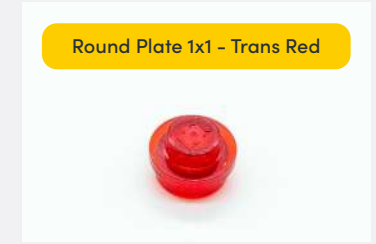
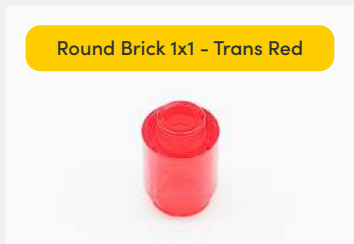
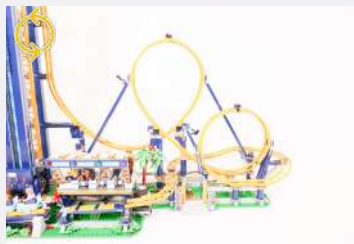
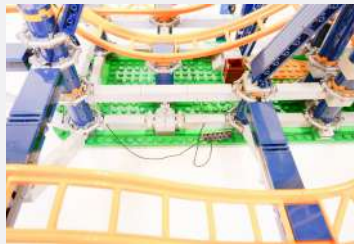
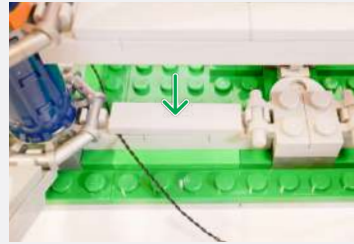
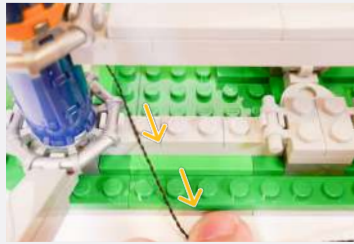
31

Take the Connecting Cable from Step 28 and connect it to the 6-Port Expansion Board

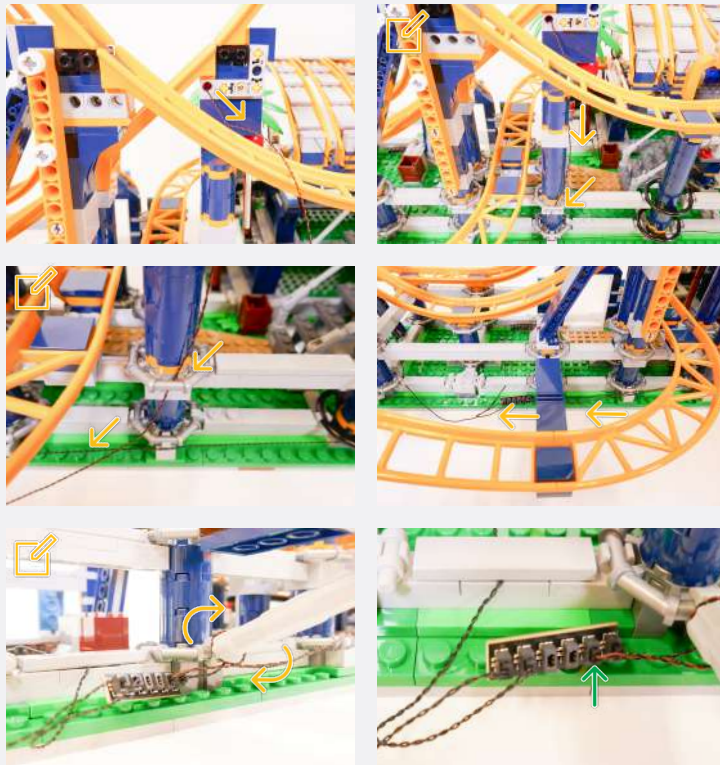


Legend → DISCONNECT → CONNECT / RECONNECT ↻ TURN / FLIP → DIRECTIONAL ↻ TWIST / BRAID * POWER ON TEST 📝 NOTE ICON

32



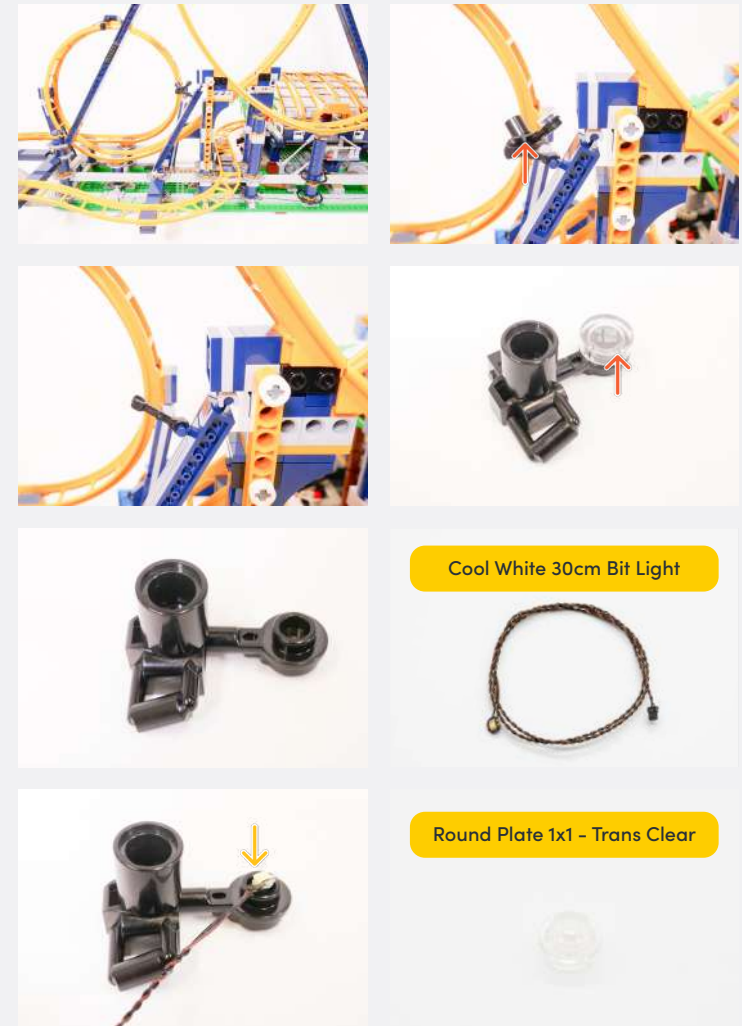
Legend → DISCONNECT → CONNECT / RECONNECT ↻ TURN / FLIP → DIRECTIONAL ↺ TWIST / BRAID ✨ POWER ON TEST 📝 NOTE ICON



✏ Thread the Rotating Bit Light beneath the track and through the ring on the pillar

✏ Wrap the Rotating Bit Light cable from around the pole several times to shorten the length

33



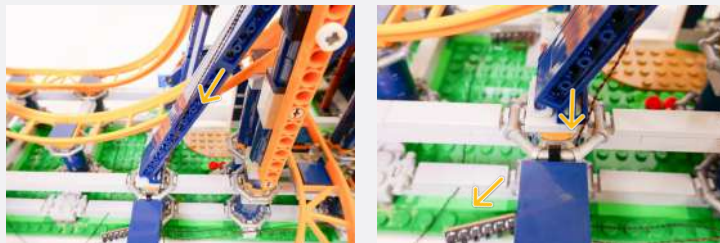
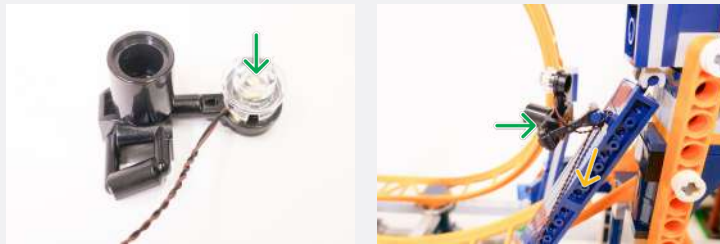
Cool White 30cm Bit Light



Round Plate 1x1 - Trans Clear



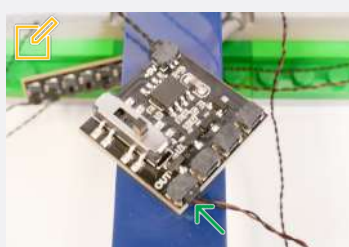
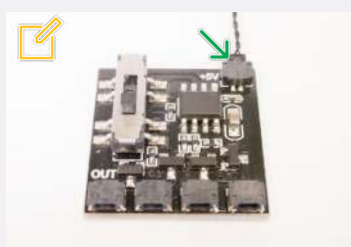
Legend → DISCONNECT → CONNECT / RECONNECT ↻ TURN / FLIP → DIRECTIONAL ↺ TWIST / BRAID * POWER ON TEST ✏ NOTE ICON



Gun Effects Board



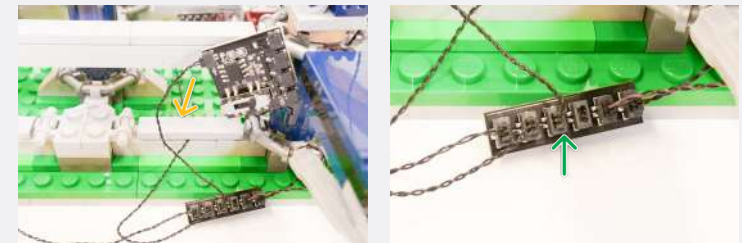
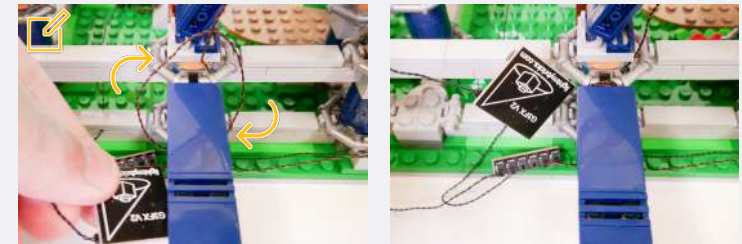
5cm Connecting Cable



✂ Connect the 5cm Connecting Cable to the '+5v' port of the Gun Effects Board

Connect the Cool White 30cm Bit Light from the camera to the 'OUT' port of the Gun Effects Board

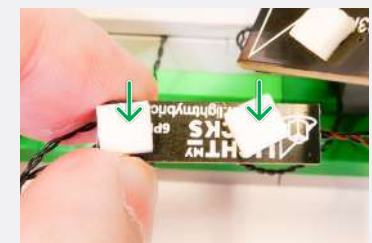
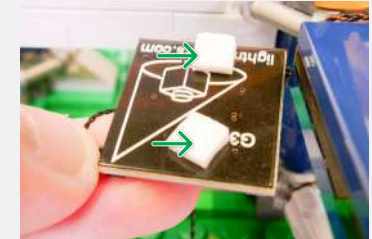
✂ Wrap the Gun Effects Board from around the pole several times to shorten the length of the cables



2x Adhesive Squares



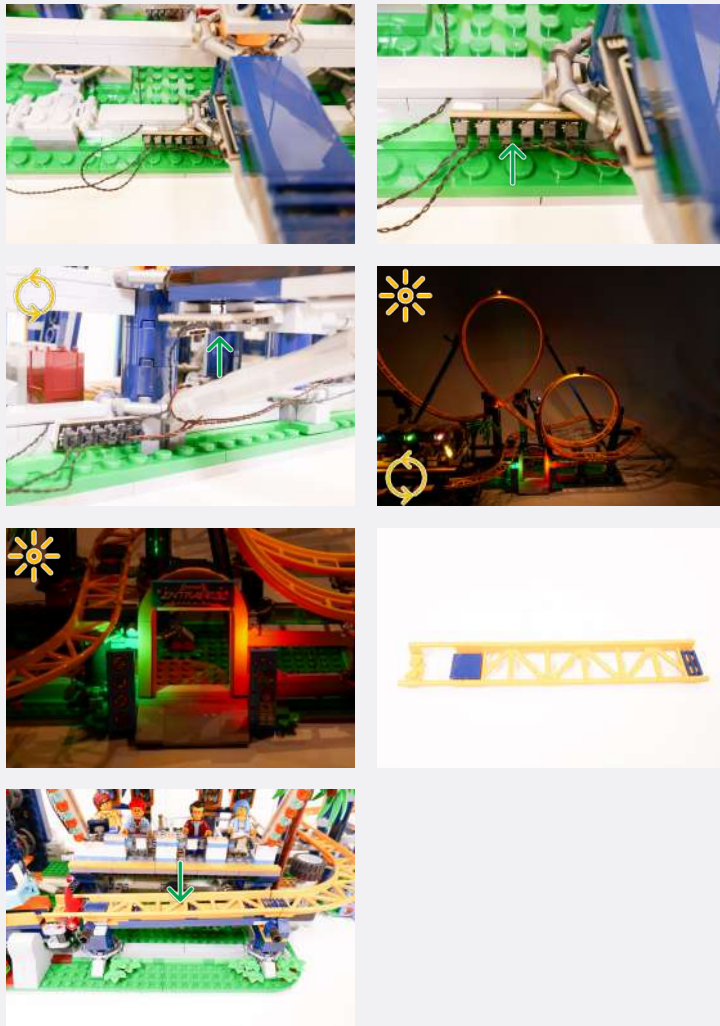
2x Adhesive Squares



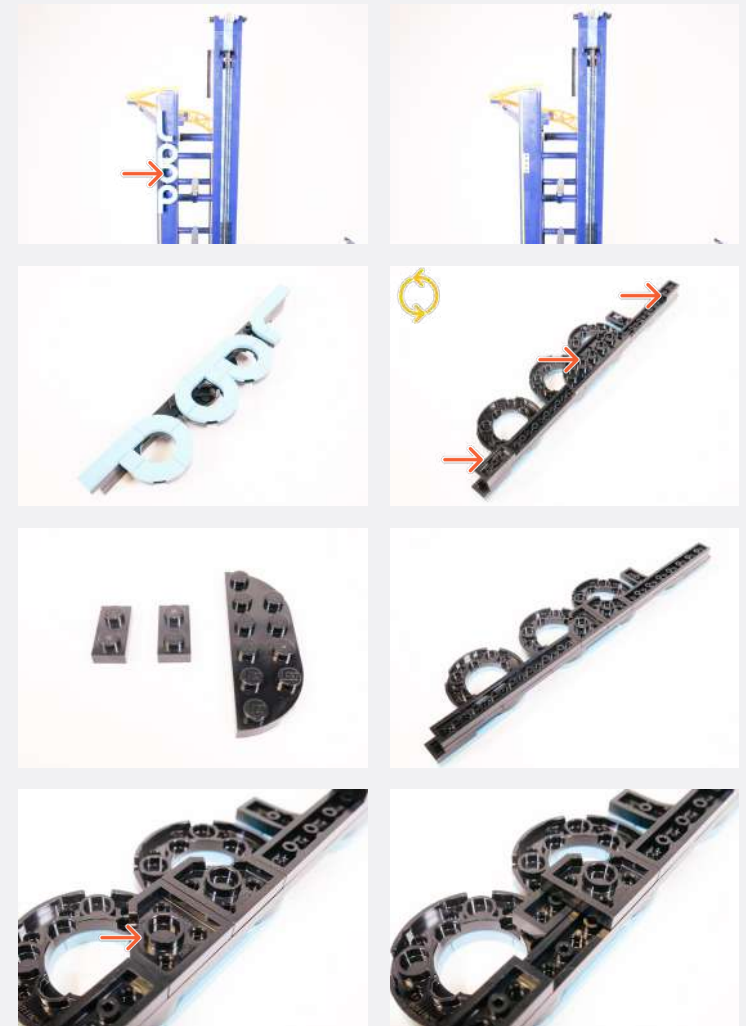
34

Legend → DISCONNECT → CONNECT / RECONNECT ↻ TURN / FLIP → DIRECTIONAL ↻ TWIST / BRAID * POWER ON TEST ✂ NOTE ICON

If you experience any issues with the lights not working and suspect an issue with a component, please try a different port on the expansion board to verify where the fault lies (with the light or expansion board). To correct any issues with expansion board ports, please view the section addressing expansion board issues in our troubleshooting section.



35



Legend DISCONNECT CONNECT / RECONNECT TURN / FLIP DIRECTIONAL TWIST / BRAID POWER ON TEST NOTE ICON

36

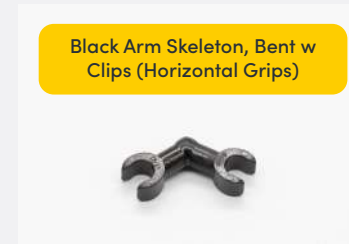
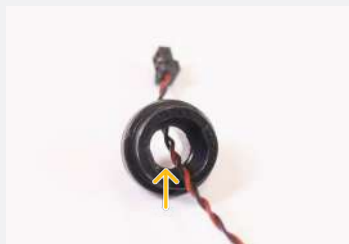
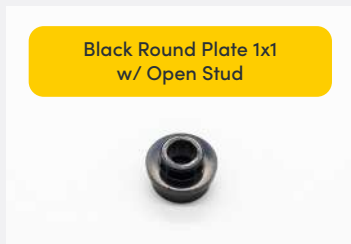
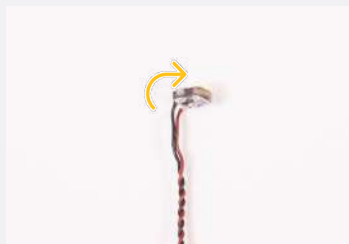
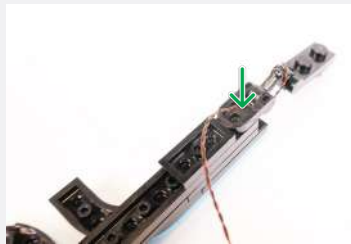
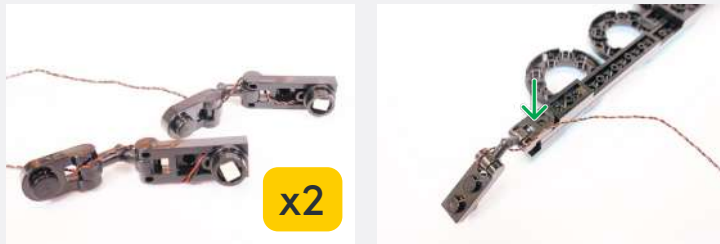
Cool White 30cm Large Bit Light	
Black Round Plate 1x1 w/ Open Stud	

	Black 1x1 Plate Modified Plate Rounded w/ Handle
Plate 1x2 MW Handle On End - Black	

Legend

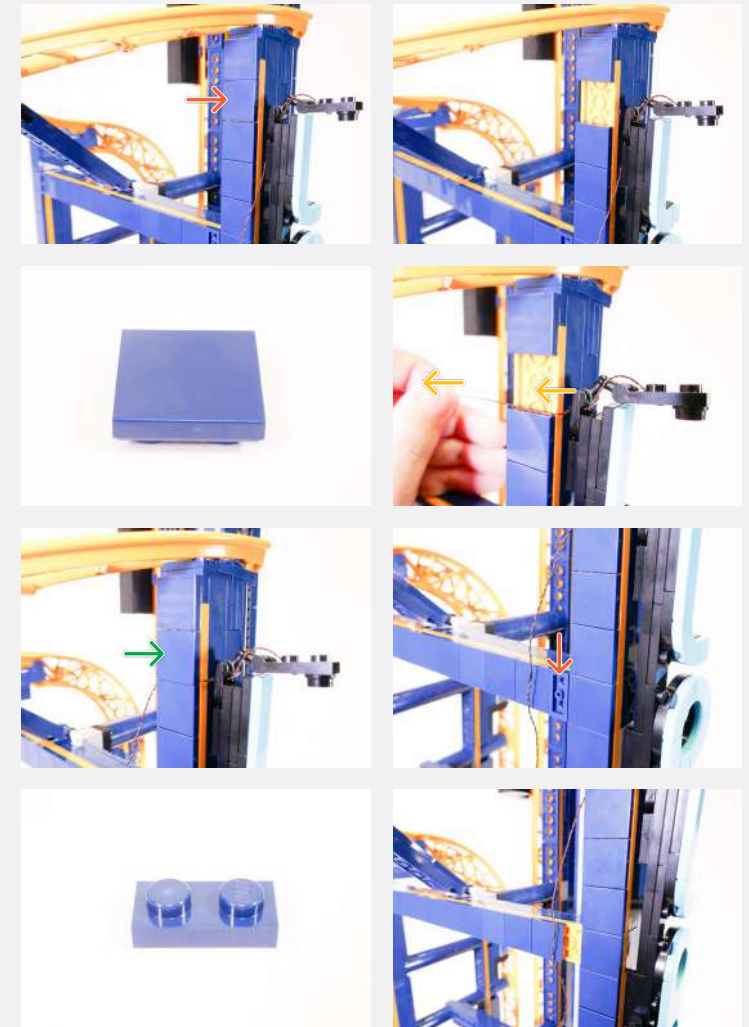
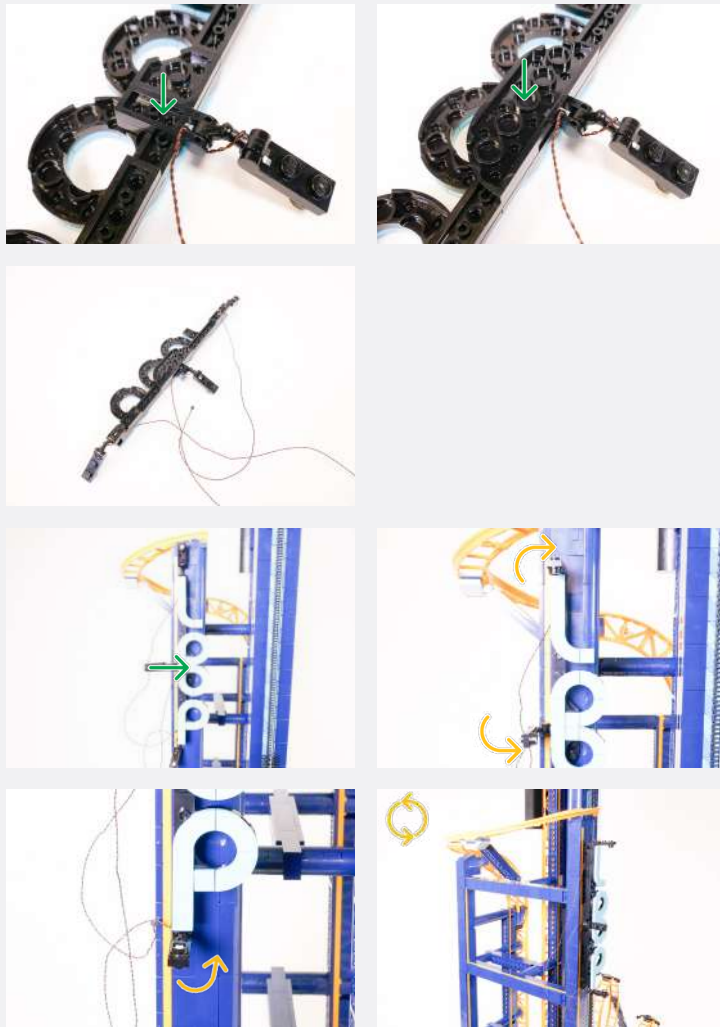
- DISCONNECT
- CONNECT / RECONNECT
- TURN / FLIP
- DIRECTIONAL
- TWIST / BRAID
- POWER ON TEST
- NOTE ICON

37



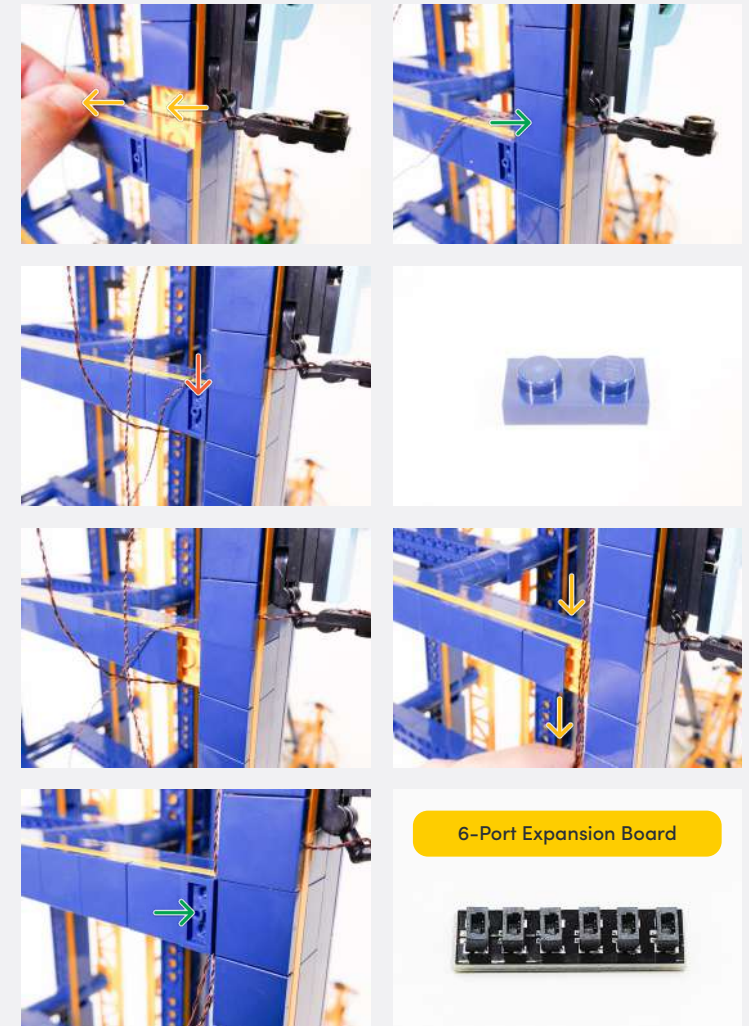
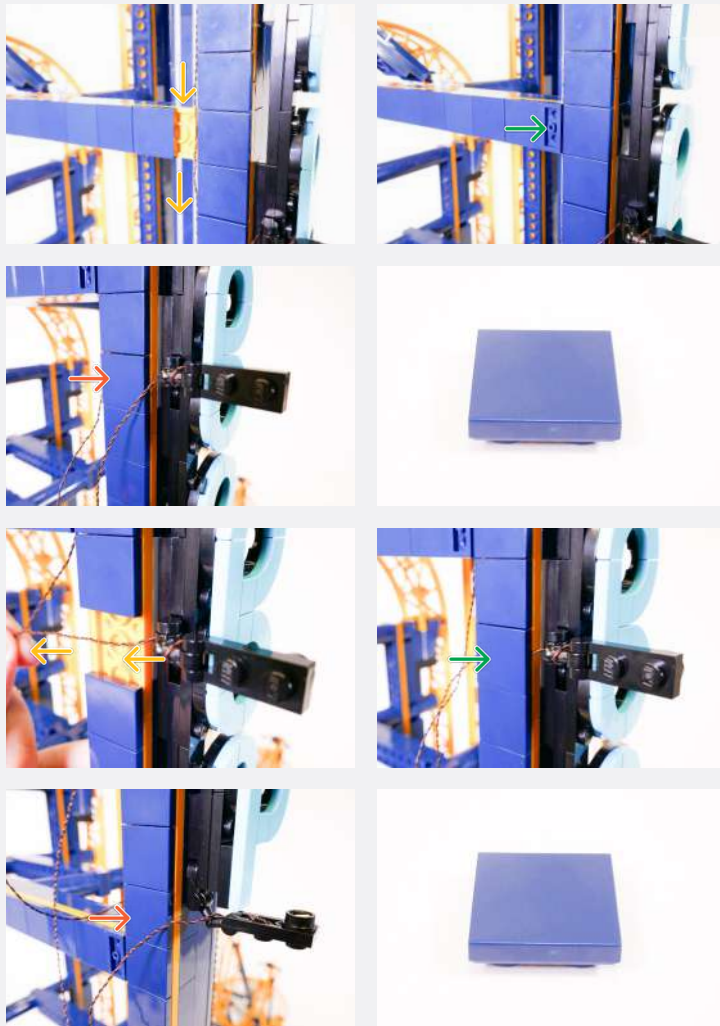
Legend → DISCONNECT → CONNECT / RECONNECT ↻ TURN / FLIP → DIRECTIONAL ↺ TWIST / BRAID ✨ POWER ON TEST 📄 NOTE ICON

38



Legend → DISCONNECT → CONNECT / RECONNECT ↻ TURN / FLIP → DIRECTIONAL ↻ TWIST / BRAID * POWER ON TEST 📝 NOTE ICON

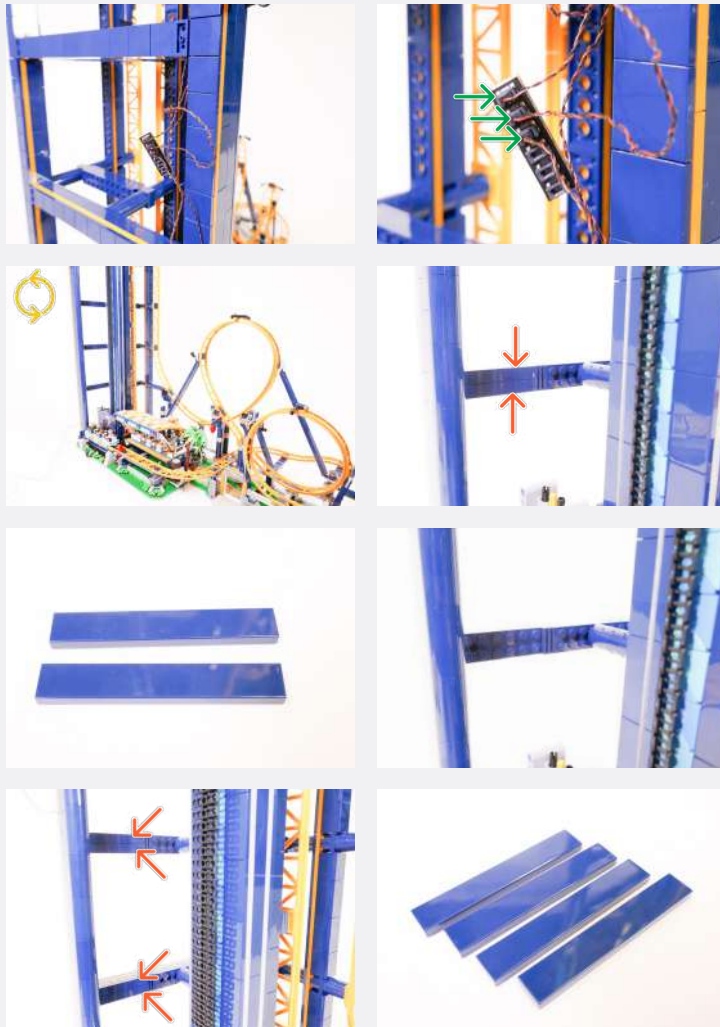
39




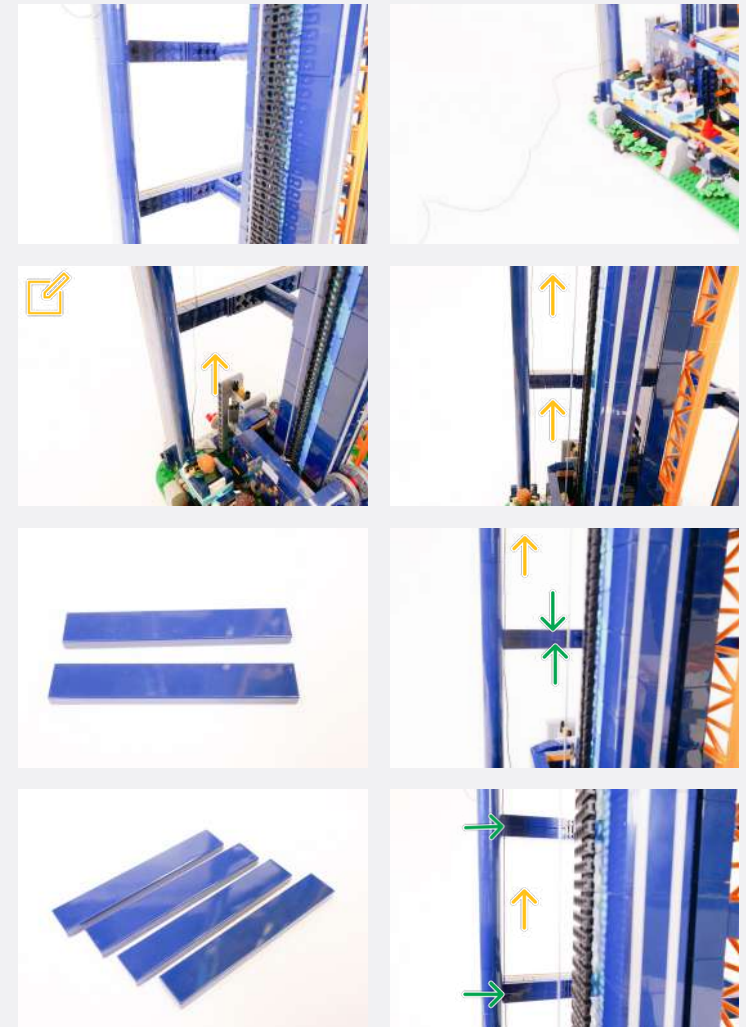
Legend

- DISCONNECT
- CONNECT / RECONNECT
- ↻ TURN / FLIP
- DIRECTIONAL
- ↔ TWIST / BRAID
- ✳ POWER ON TEST
- 📝 NOTE ICON

40



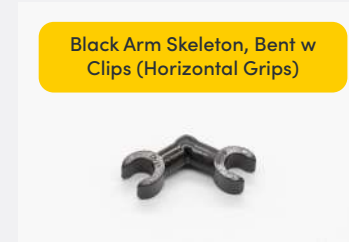
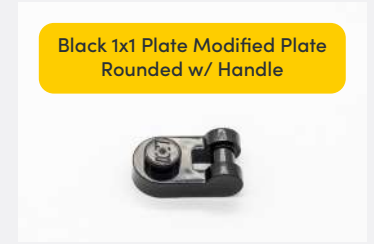
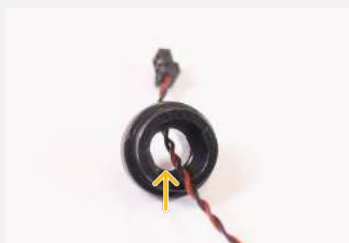
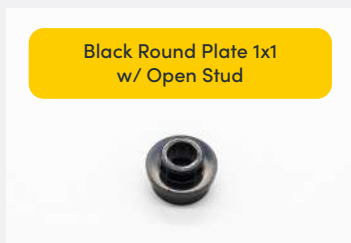
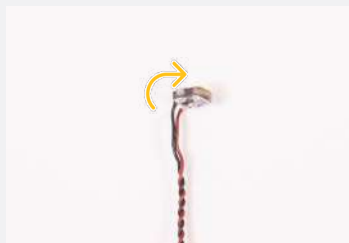
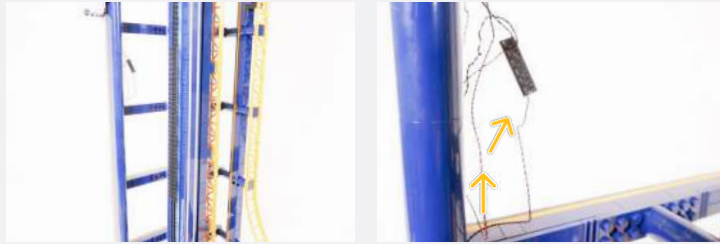
 Pull the 50cm Connecting Cable from Step 18 from the bottom of the elevator up in between the studs of each pillar before reconnecting the tiles



Legend

-  DISCONNECT
-  CONNECT / RECONNECT
-  TURN / FLIP
-  DIRECTIONAL
-  TWIST / BRAID
-  POWER ON TEST
-  NOTE ICON

41



Legend

- DISCONNECT
- CONNECT / RECONNECT
- TURN / FLIP
- DIRECTIONAL
- TWIST / BRAID
- POWER ON TEST
- NOTE ICON

42



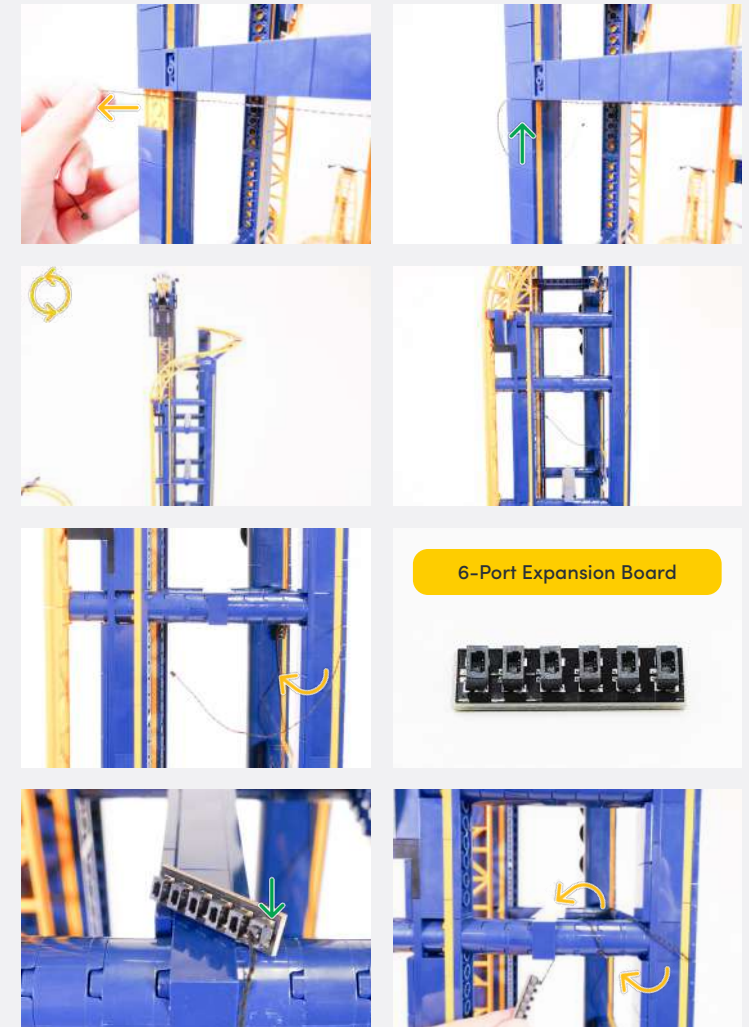
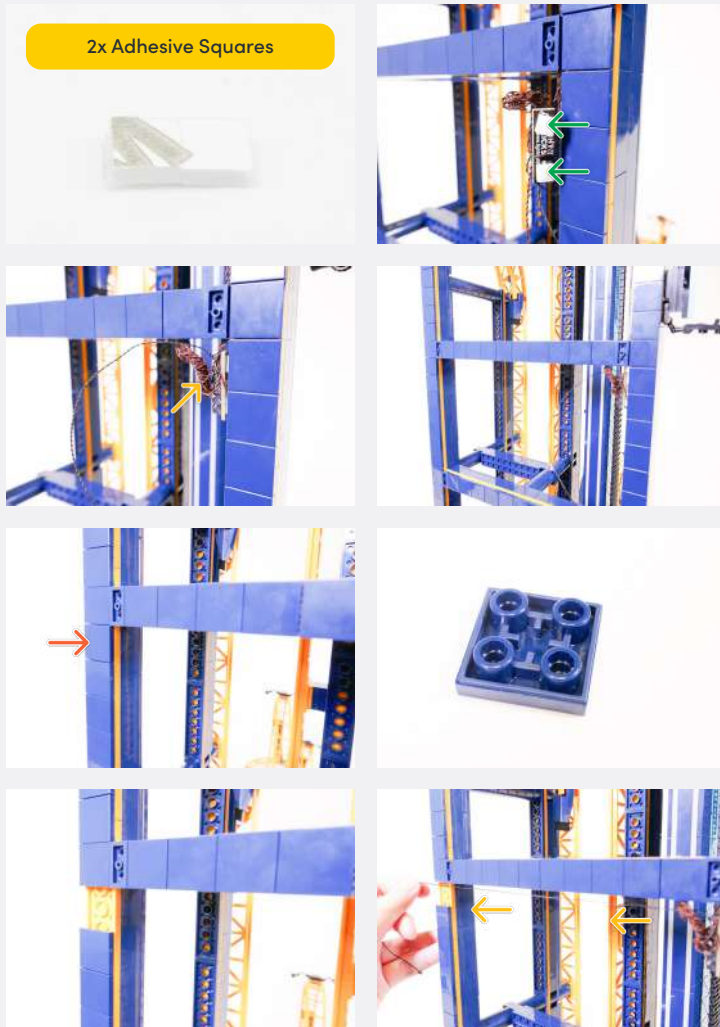
43



Legend

- DISCONNECT
- CONNECT / RECONNECT
- TURN / FLIP
- DIRECTIONAL
- TWIST / BRAID
- POWER ON TEST
- NOTE ICON

44



6-Port Expansion Board



Legend → DISCONNECT → CONNECT / RECONNECT ↻ TURN / FLIP → DIRECTIONAL ↻ TWIST / BRAID * POWER ON TEST 📝 NOTE ICON

45

Warm White 30cm Large Bit Light



Black Round Plate 1x1 w/ Open Stud



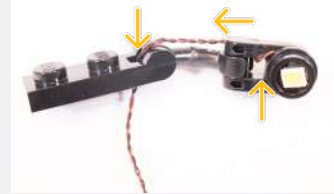
Black Arm Skeleton, Bent w/ Clips at 90 Degrees



Plate 1x2 MW Handle On End - Black



Black 1x1 Plate Modified Plate Rounded w/ Handle



Legend



CONNECT / RECONNECT



TURN / FLIP



DIRECTIONAL



TWIST / BRAID



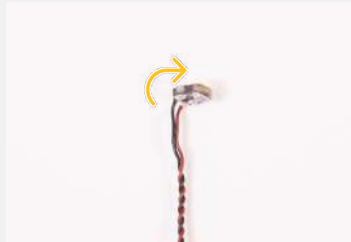
POWER ON TEST



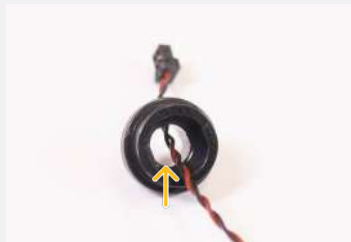
NOTE ICON

46

Warm White 30cm Large Bit Light



Black Round Plate 1x1 w/ Open Stud



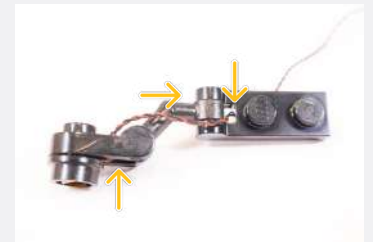
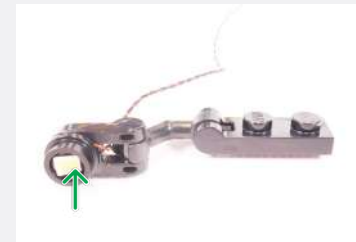
Black Arm Skeleton, Bent w/ Clips at 90 Degrees



Plate 1x2 MW Handle On End - Black



Black 1x1 Plate Modified Plate Rounded w/ Handle



Legend



CONNECT / RECONNECT



TURN / FLIP



DIRECTIONAL



TWIST / BRAID

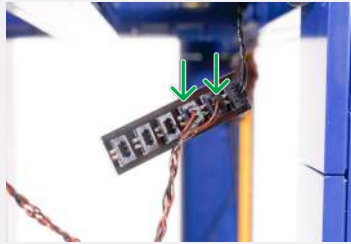


POWER ON TEST

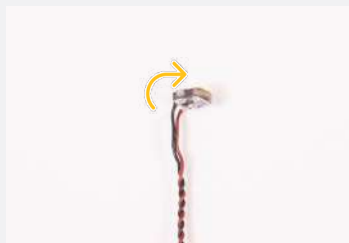


NOTE ICON

47



Warm White 30cm Large Bit Light



Black Round Plate 1x1 w/ Open Stud



Black 1x1 Plate Modified Plate Rounded w/ Handle



Black Arm Skeleton, Bent w Clips (Horizontal Grips)



Plate 1x2 MW Handle On End - Black



Legend



48



Rotating Bit Light 30cm




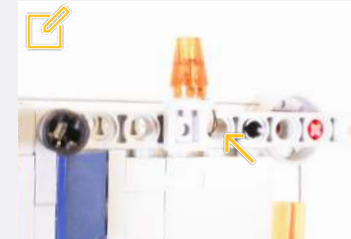
Cone 1 x 1 w/ Top Groove - Trans Orange



Bracket 1x1 - Light Grey

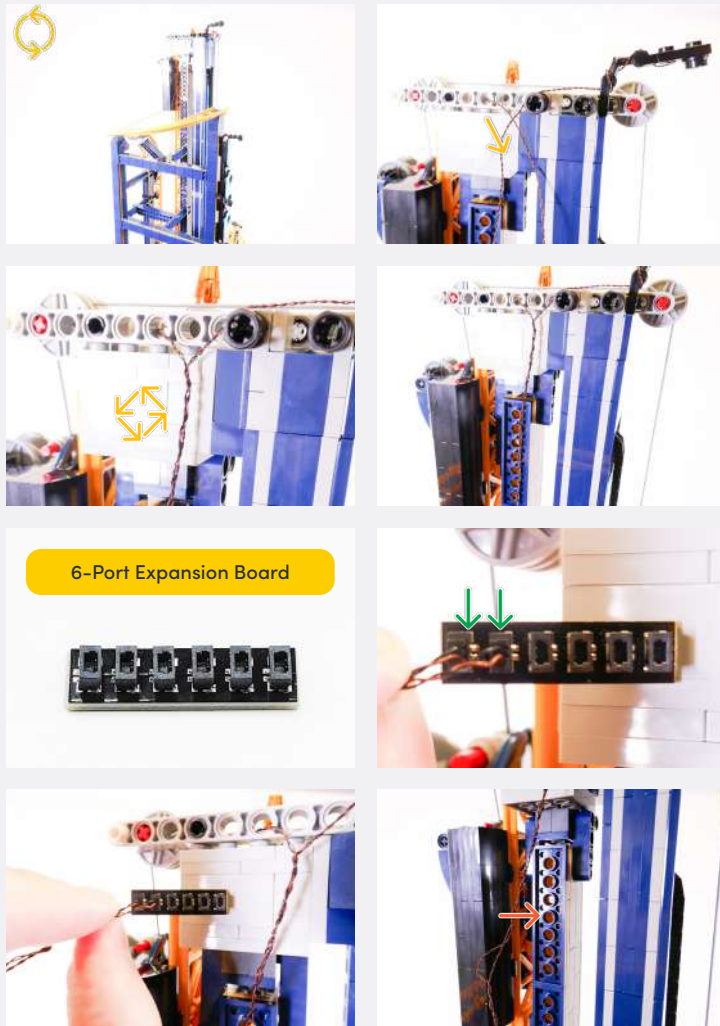


 Thread the cable of the Rotating Bit Light through the hole



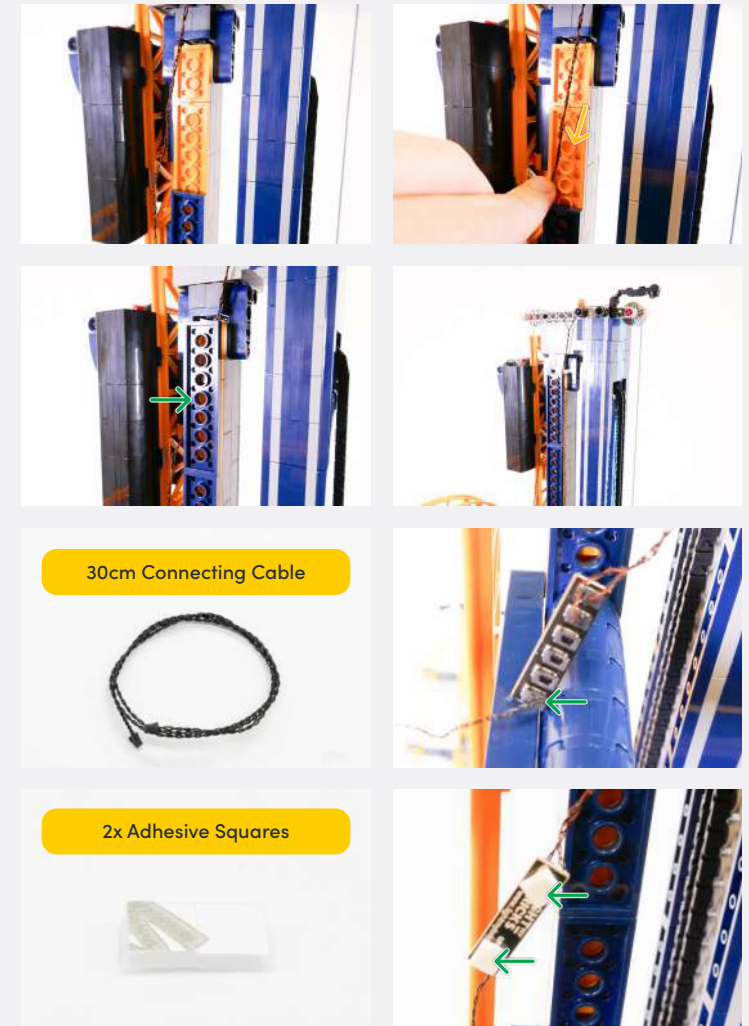
Legend  DISCONNECT  CONNECT / RECONNECT  TURN / FLIP  DIRECTIONAL  TWIST / BRAID  POWER ON TEST  NOTE ICON

49



6-Port Expansion Board

50

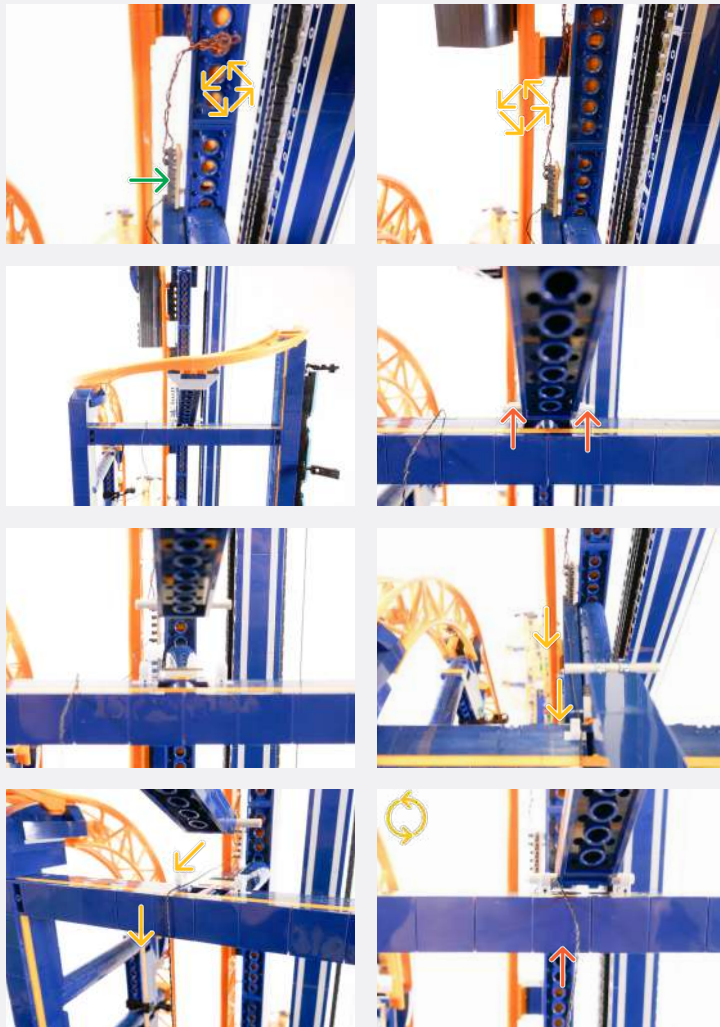


30cm Connecting Cable

2x Adhesive Squares

Legend → DISCONNECT → CONNECT / RECONNECT ↻ TURN / FLIP → DIRECTIONAL ↻ TWIST / BRAID * POWER ON TEST 📄 NOTE ICON

51



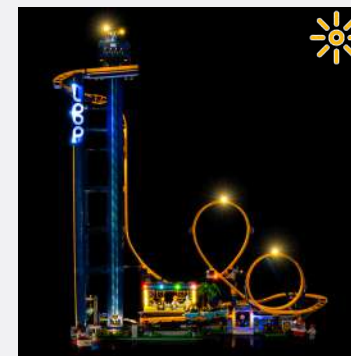
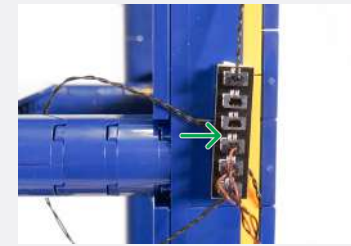
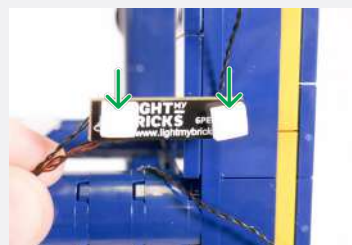
Legend

- DISCONNECT
- CONNECT / RECONNECT
- ↻ TURN / FLIP
- DIRECTIONAL
- ↻ TWIST / BRAID
- ✳ POWER ON TEST
- 📝 NOTE ICON

📌 If you experience any issues with the lights not working and suspect an issue with a component, please try a different port on the expansion board to verify where the fault lies (with the light or expansion board). To correct any issues with expansion board ports, please view the section addressing expansion board issues in our troubleshooting section.

52

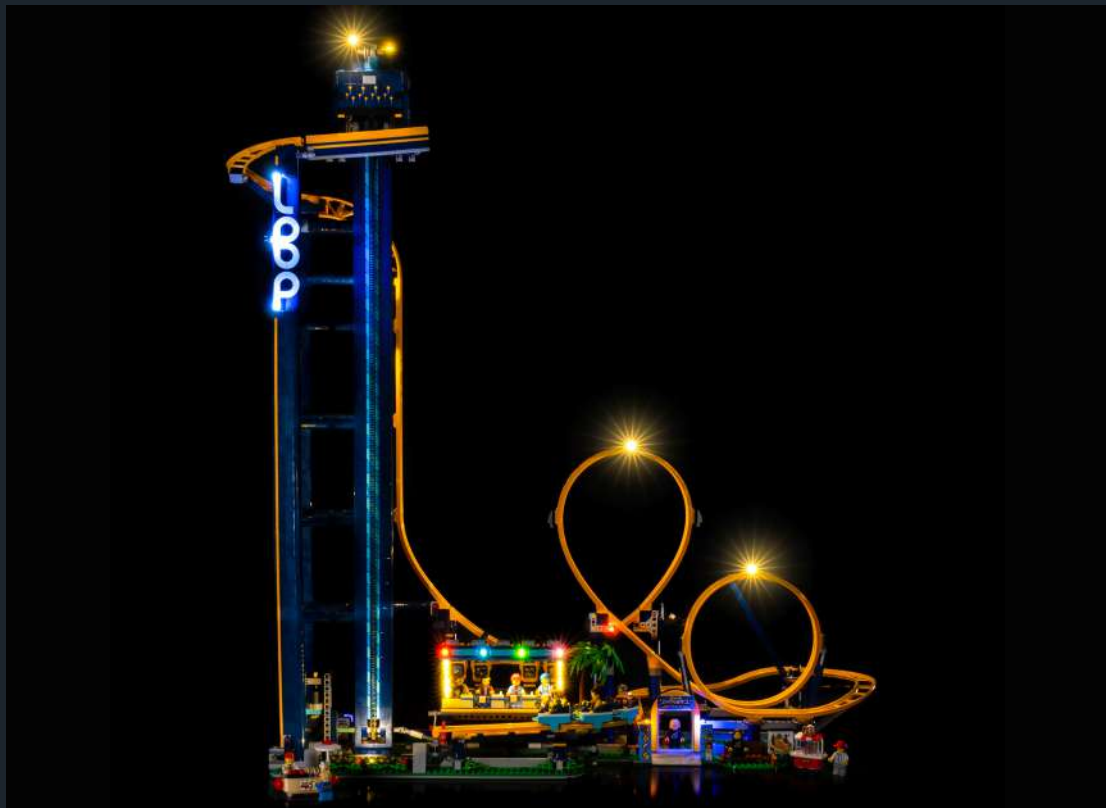
📌 Connect the other end to a 5V USB Power Bank, 5V USB Wall Adaptor, or USB to AA Battery Pack (sold separately)



Legend → DISCONNECT → CONNECT / RECONNECT ↻ TURN / FLIP → DIRECTIONAL ↻ TWIST / BRAID ✨ POWER ON TEST 📌 NOTE ICON

FINAL PRODUCT

This finally completes installation of the Light My Bricks
LEGO Loop Coaster 10303 Light Kit.





TROUBLESHOOTING

Light My Bricks lighting kits contain individual components that are very small and can be easily damaged if not handled correctly.

To prevent unnecessary damage to components, we highly recommend that the User Guide section, **“Important things to note”** is read carefully. Follow the handling procedures in the User Guide to help prevent faults and damages to your Light My Bricks components.

If you are experiencing issues with your Light My Bricks set, watch our troubleshooting video [here](#) or read on for a list of common causes to help you troubleshoot.

Troubleshooting

Firstly, ensure that the batteries have power using a battery charge gauge.

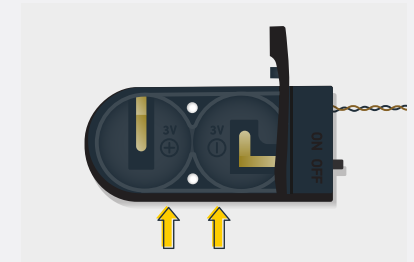
If the batteries have no power, replace the batteries.

If the batteries still have power, check to see if the batteries have been inserted correctly into the battery pack.

Check For CR2032 Batteries Using The Flat Battery Pack

Inside the battery pack is a symbol indicating which side the (round) CR2032 battery should be inserted. Check that the “+” side of the battery pack has the battery with the “+” symbol facing downwards.

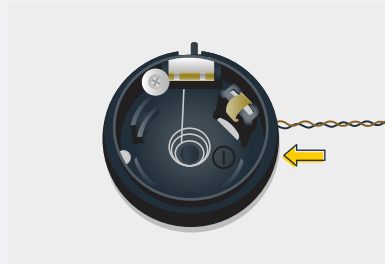
On the opposite side, the “-” side of the battery pack should have the battery flipped upside down, that is the “+” symbol facing upwards.



Troubleshooting

Check For Cr2032 Batteries Using The Round Battery Pack

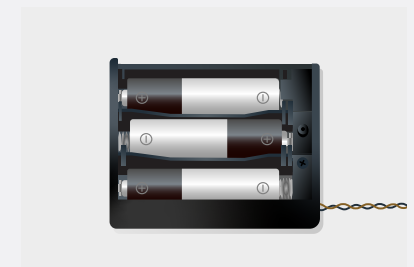
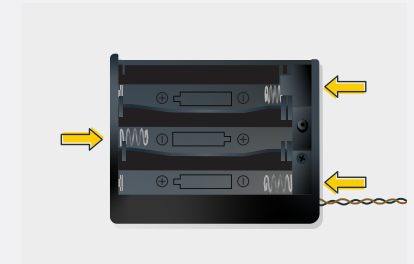
Inside the battery pack is a symbol indicating which side the (round) CR2032 battery should be inserted. In this case, for the stacked battery pack, ensure that BOTH batteries have the “+” symbol facing upwards.



Check for AA batteries using the AA battery pack

Inside the battery pack are symbols indicating which direction the AA battery should be inserted. The flat side of the battery should be paired with the spring side of the battery pack.

If the batteries have been installed correctly and your kit still isn't operating correctly, the next step is to check the wiring.



Troubleshooting

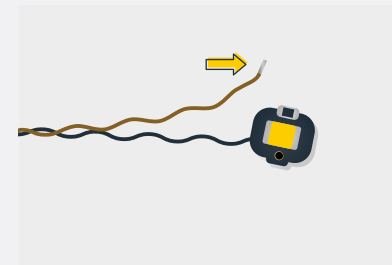
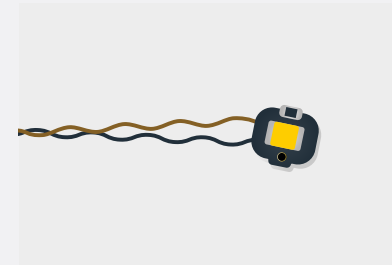
Check Your Wires

In order for Light My Bricks components to fit in between and underneath LEGO® bricks, the components need to be very small. Due to this nature, Light My Bricks components can be easily damaged when not handled correctly.

Be careful when removing unpacked components out of the packaging and ensure not to forcibly pull at the wires as this can damage the soldering that attach the wires to the LEDs.

If the wiring is detached from the LED itself, the light will not operate.

When connecting lights to your LEGO set, check that there are no pinched wires underneath or in between bricks and plates. When the wires are pinched and the exposed wires are touching each other, this can cause a crosswire and the lights to not function correctly.



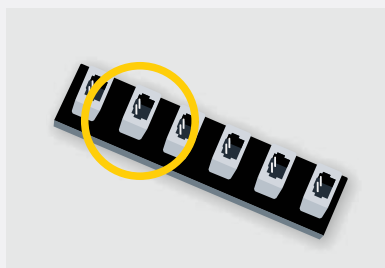
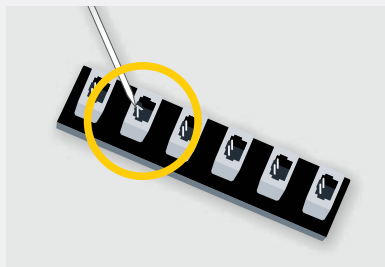
Troubleshooting

Check Your Expansion Board Ports/ Strip Light Ports / Effects Board Ports

It is important to note that connectors can only be inserted to the expansion board, strip light, or effects board ports in one direction.

Forcibly inserting connectors in the incorrect direction will result in damaging the pins inside each of the ports on your component board.

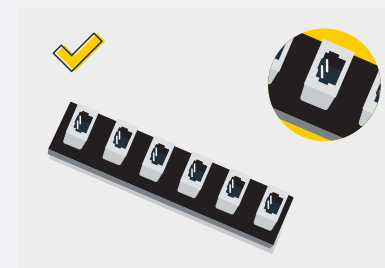
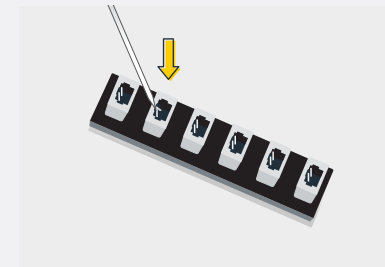
Not only will a light connected to the damaged port not work, but if the pins inside the port are bent to a point they are touching each other, this can result in all other lights in the system to stop working. This is a short circuit.



A short circuit can also result in overheating of the board, cable or batteries. If you suspect a short circuit, **DISCONNECT POWER IMMEDIATELY**. Batteries can fail, catch fire, or even explode if left connected to a short circuit for too long.

If you suspect you have a faulty component due to a bent pin, try the following steps:

If you look carefully inside each of the ports, each port contains 2 small pins that should be straight. You will be able to identify a faulty port if it has any bent pins.





CONTACT US

If you have an enquiry regarding the online shop, our products or a general enquiry please refer to our Frequently Asked Questions webpage here.

Alternatively, you can contact our Customer Services team by visiting our online support portal here.

support.lightmybricks.com

We thank you for purchasing this product and hope you enjoy!



lightmybricks.com