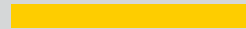




**LIGHT^{MY}
BRICKS**



**LEGO® CORNER GARAGE #10264
LIGHT KIT
INSTALLATION GUIDE**

Light My Bricks



LEGO CORNER GARAGE 10264 INSTALLATION GUIDE

Hi There!

We're here to help you get started on the LEGO
Corner Garage 10264 Light Kit.

This PDF details the instructions for the LED light kit only. If
you are wishing to purchase this product, please [click here](#)
to view the product page.

If you run into any issues, please refer to the troubleshoot-
ing section towards the end of this guide.

Have fun and enjoy!



PACKAGE CONTENTS:

ASSORTED BRICKS:



- 10 x White 15cm Bit Light
- 4 x White 30cm Bit Light
- 3 x Pink 30cm Bit Light
- 1 x Blue 30cm Bit Light
- 1 x Lamp Post with Bit Light installed
- 8x White Strip Lights



- 2 x 6-Port Expansion Board
- 1 x 8-Port Expansion Board
- 1 x 12-Port Expansion Board
- 6 x Adhesive Squares



- 7x 15cm Connecting Cable
- 3x 30cm Connecting Cables
- 1 x 50cm Connecting Cable



- 1x USB Power Cable
(Power Source not Included)



- 2x Trans Clear Round Plate 1x1
- 2x Trans Red Round Plate 1x1
- 6x Plate 1x6 (Any Colour)
- 2x Black Round Plate 1x1 with Open Stud
- 2x Black Tile 1x1 with Clip Rounded Edges
- 2x Black 1x1 Modified Plate Rounded with Handle

ADDITIONAL COMPONENTS TO USE WIRELESS POWER CONNECTORS (SOLD SEPERATELY)

- 3 x Wireless Power Connectors sets (available to purchase in a 2pk)
- 2 x 2-Port Expansion Board (available to purchase in a 4pk)
- 3 x Plate 1x6 (Any Colour)

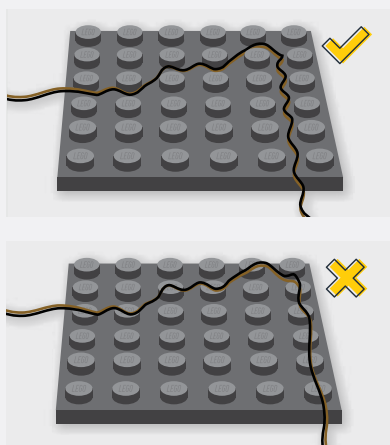
NOTE: If you choose to use the Wireless Power Connectors, we recommend purchasing the aforementioned components before beginning.

* Indicates components which include spares

Contents

Before You Begin	5
Blueprint	8
Instructions	9
Final Product	76
Troubleshooting	77
Contact	83

Before You Begin



Laying cables in between and underneath bricks

Cables can fit in between and underneath LEGO® bricks, plates, and tiles providing they are laid correctly between the LEGO® studs. Do NOT forcefully join LEGO® together around cables; instead ensure they are laying comfortably in between each stud.

CAUTION: Forcing LEGO® to connect over a cable can result in damaging the cable and light.

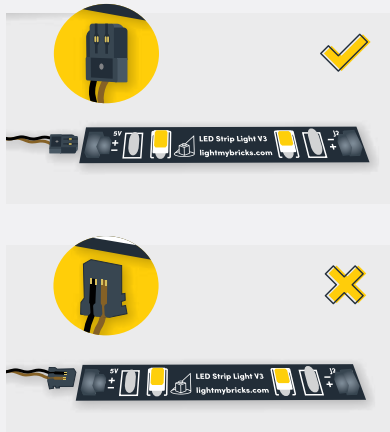


Connecting Cable Connectors To Expansion Boards

Take extra care when inserting connectors to ports of Expansion Boards. Connectors can be inserted only one way. With the expansion board facing up, look for the soldered “=” symbol on the left side of the port. The connector side with the wires exposed should be facing toward the soldered “=” symbol as you insert into the port. If a plug won’t fit easily into a port connector, do not force it.

Incorrectly inserting the connector can result in bent pins inside the port or possible overheating of the expansion board when connected.

Before You Begin



Connecting Cable Connectors To Strip Lights

Take extra care when inserting connectors to ports on the Strip Lights. Connectors can be inserted only one way. With the Strip Light facing up, ensure the side of the connector with the wires exposed is facing down. If a plug won't fit easily into a port connector, don't force it. Doing so will damage the plug and the connector.



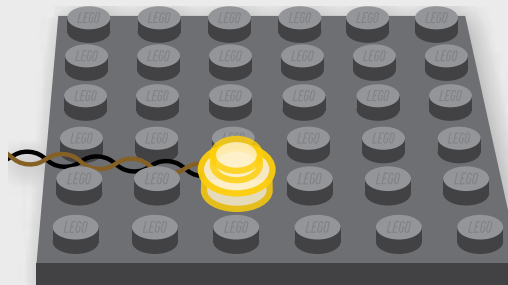
Connecting Micro Cable Connectors To Micro Expansion Board Ports

Take extra care when inserting the micro connectors to micro ports of Micro Expansion Boards. Connecting Micro Bit Lights to Micro Expansion Boards is similar to connecting lights and cables to Strip Lights. With the expansion board facing up, ensure the side of the connector with the wires exposed is facing down. If a plug won't fit easily into a port connector, do not force it. Use your fingernail to push the plastic part of the connector to the micro port.

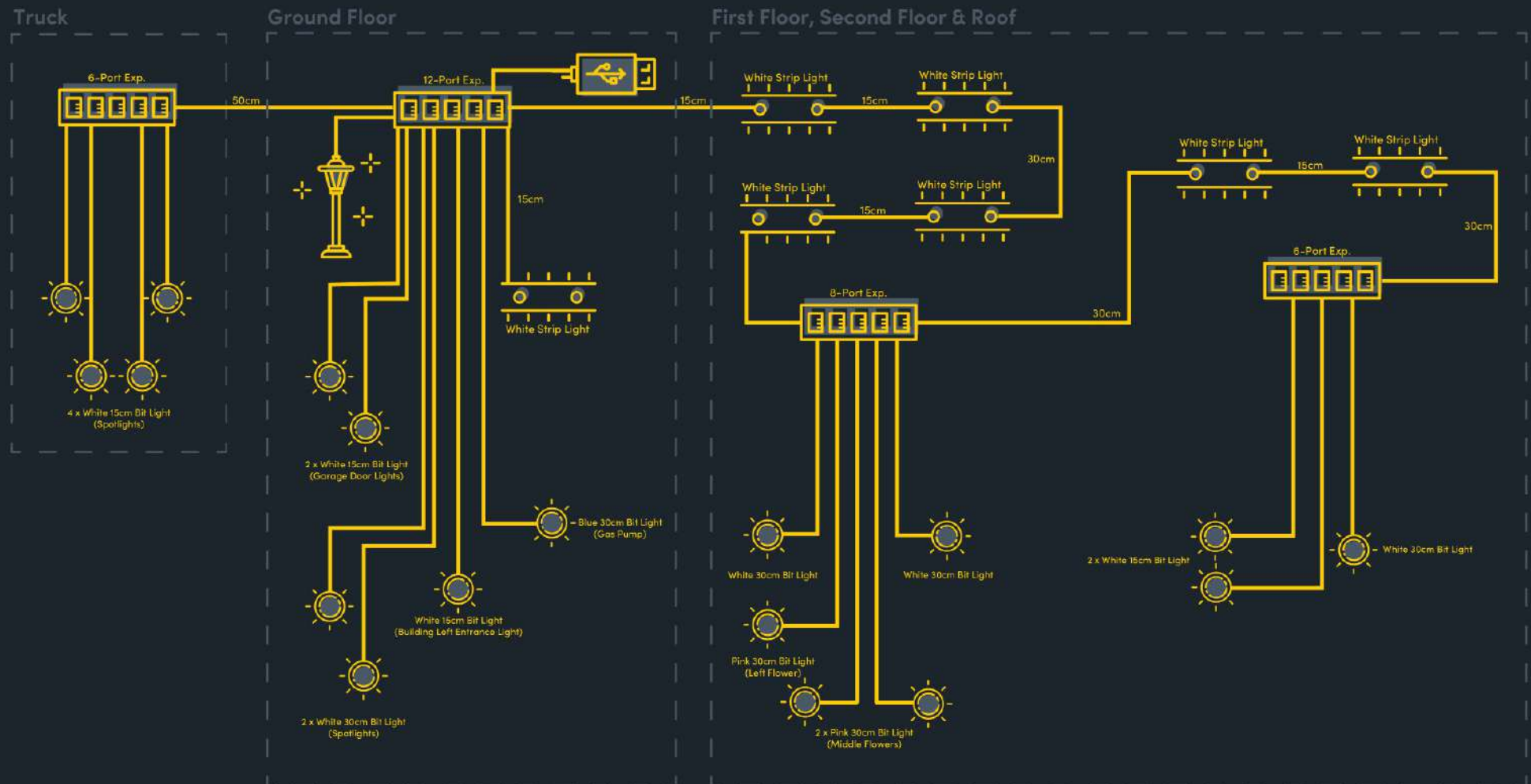
Before You Begin

Installing Bit Lights Under Lego® Bricks And Plates

When installing Bit Lights under LEGO® pieces, ensure they are placed the correct way up (Yellow LED component exposed). You can either place them directly on top of LEGO® studs or in between.



BLUEPRINT





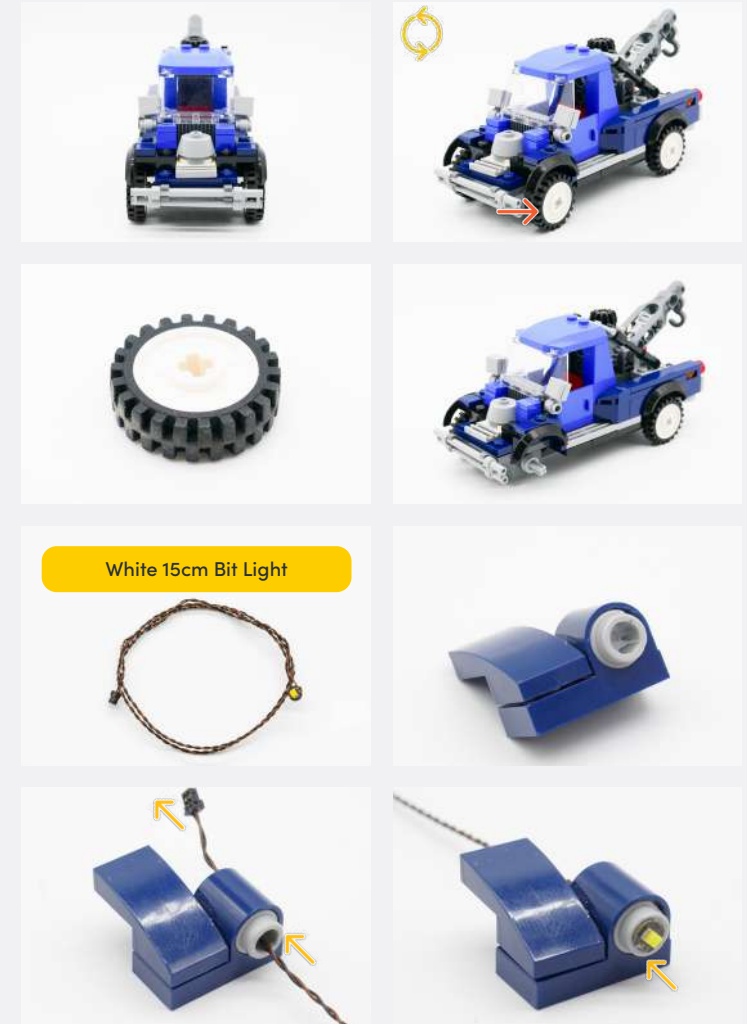
INSTRUCTIONS

To ensure a smooth installation of your light kit, please read and follow each step carefully. If you run into any issues, please refer to the online troubleshooting guide.

1



2



Legend

→ DISCONNECT

→ CONNECT / RECONNECT

↻ TURN / FLIP

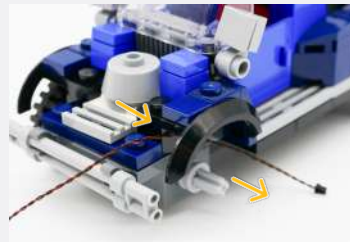
→ DIRECTIONAL

↻ TWIST / BRAID

✳ POWER ON TEST

📝 NOTE ICON

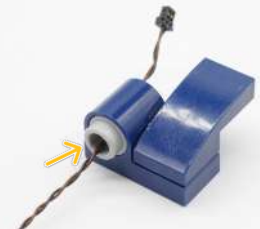
Round Plate 1x1 - Trans Clear



3



White 15cm Bit Light



Round Plate 1x1 - Trans Clear



Legend

→ DISCONNECT

→ CONNECT / RECONNECT

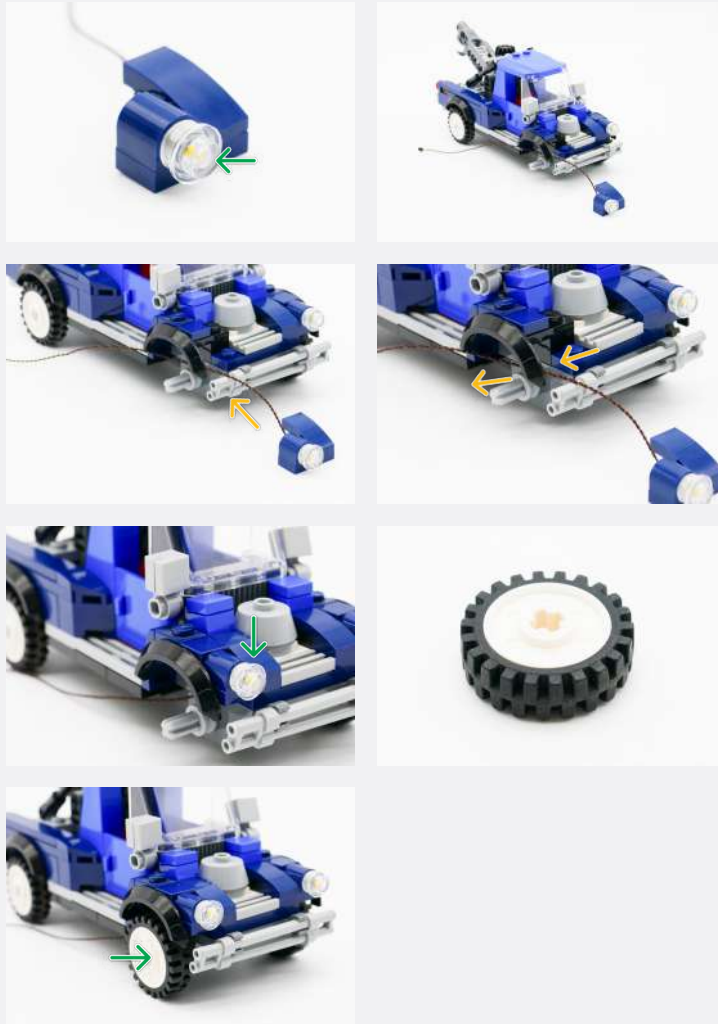
↻ TURN / FLIP

→ DIRECTIONAL

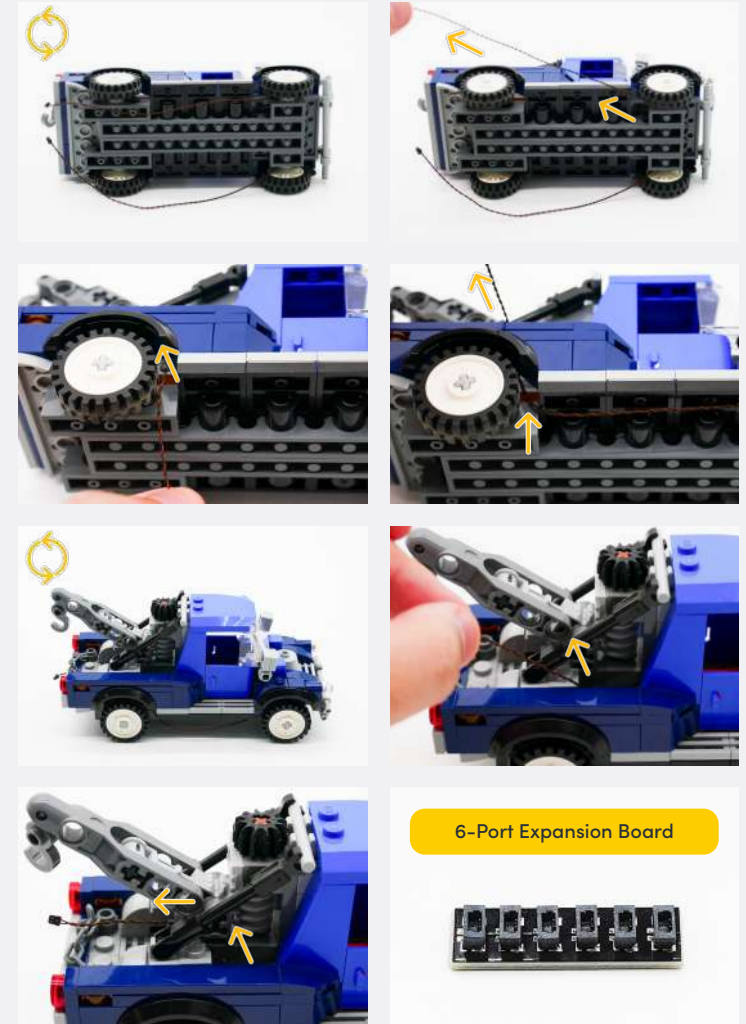
↻ TWIST / BRAID

⚡ POWER ON TEST

📝 NOTE ICON



4



Legend

→ DISCONNECT

→ CONNECT / RECONNECT

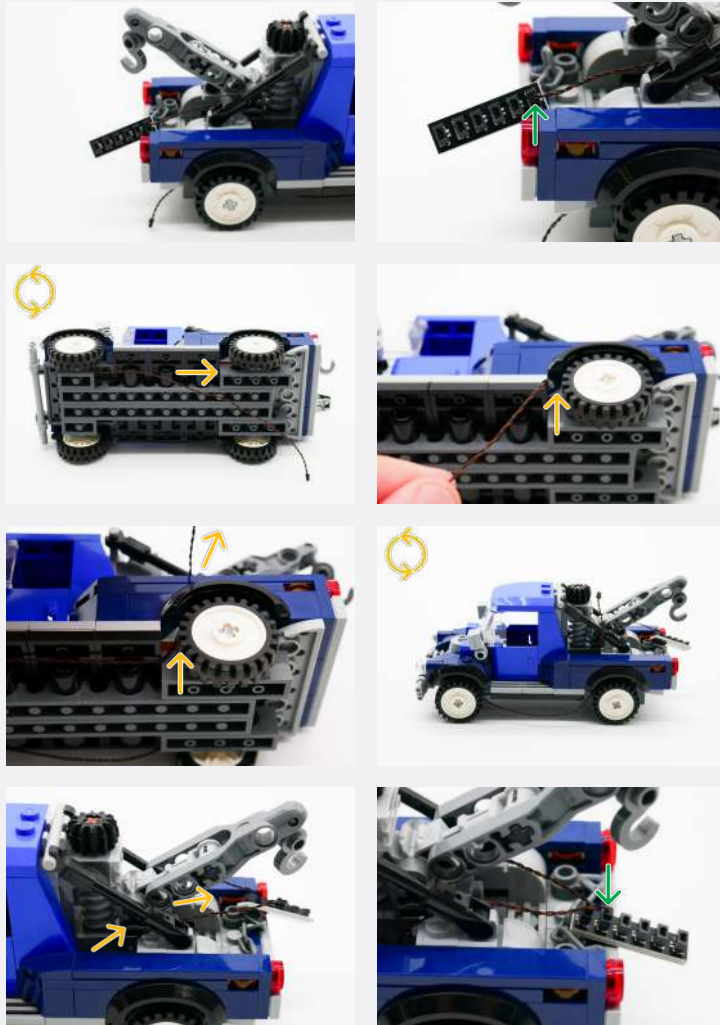
↻ TURN / FLIP

→ DIRECTIONAL

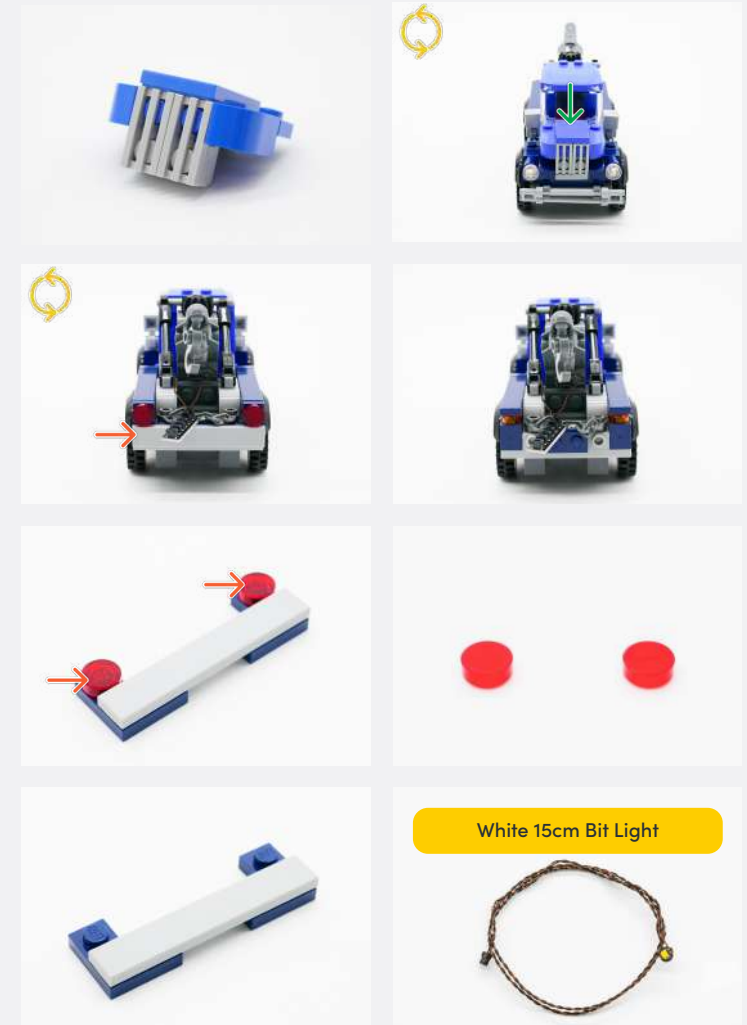
↻ TWIST / BRAID

⚡ POWER ON TEST

📝 NOTE ICON

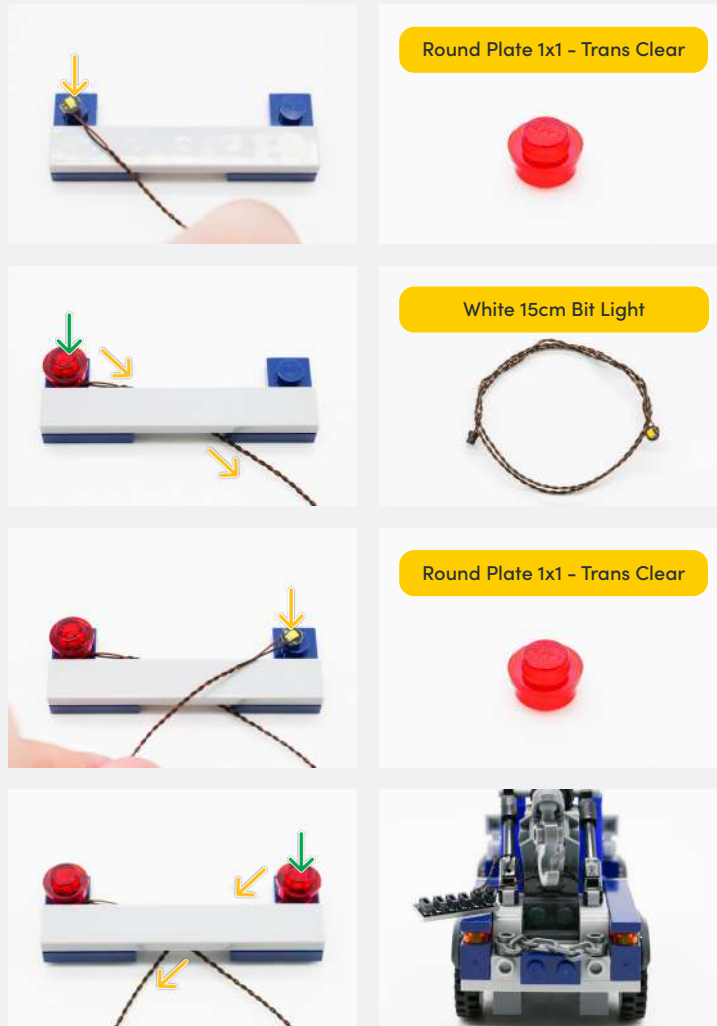


5

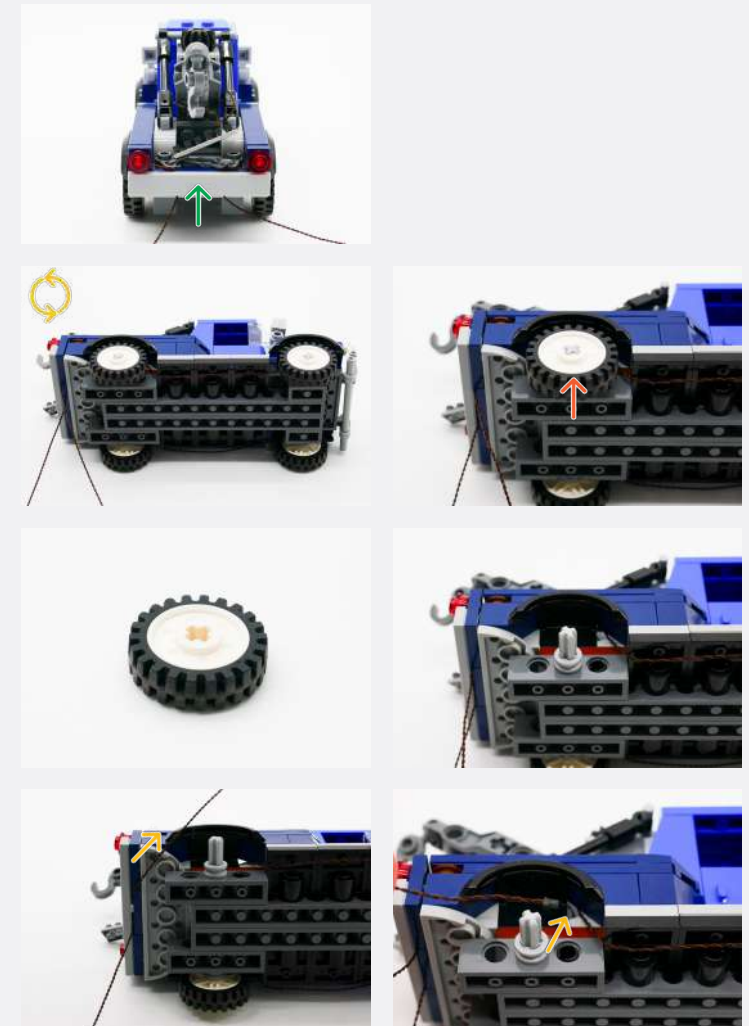


Legend

→ DISCONNECT → CONNECT / RECONNECT ↺ TURN / FLIP → DIRECTIONAL ↻ TWIST / BRAID ✨ POWER ON TEST 📝 NOTE ICON

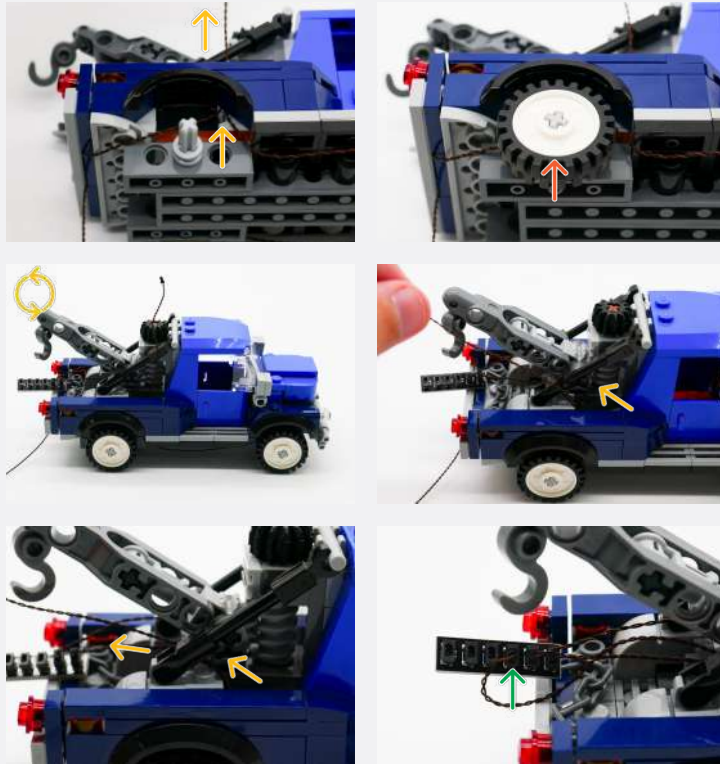


6



Legend

 DISCONNECT
  CONNECT / RECONNECT
  TURN / FLIP
  DIRECTIONAL
  TWIST / BRAID
  POWER ON TEST
  NOTE ICON




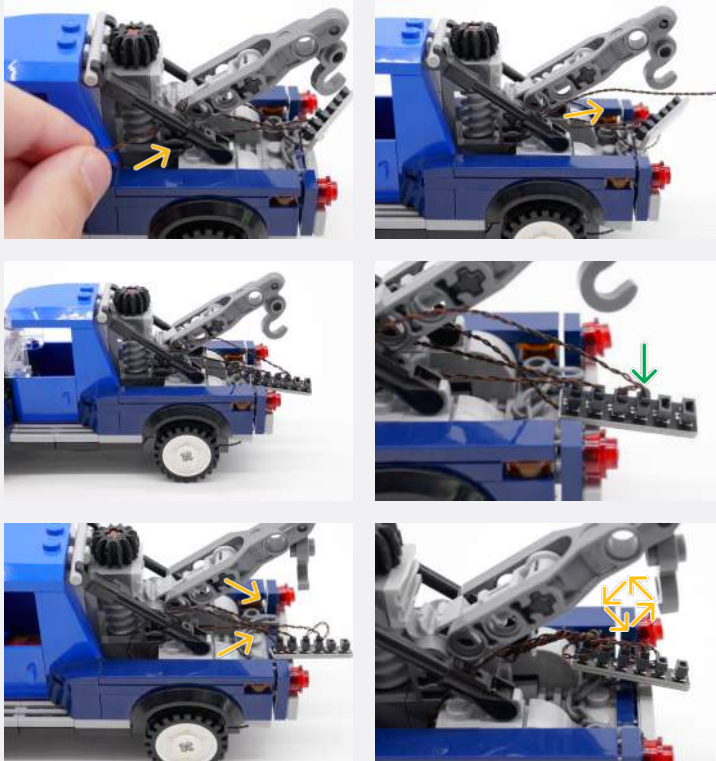
7



Legend

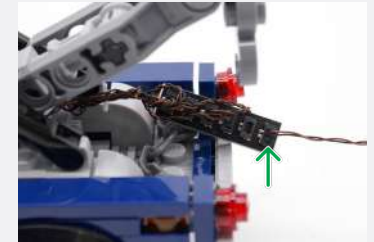
→ DISCONNECT → CONNECT / RECONNECT ↺ TURN / FLIP → DIRECTIONAL ↻ TWIST / BRAID ✨ POWER ON TEST 📝 NOTE ICON


 If you experience any issues with the lights not working and suspect an issue with a component, please try a different port on the expansion board to verify where the fault lies (with the light or expansion board). To correct any issues with expansion board ports, please view the section addressing expansion board issues in our troubleshooting section.

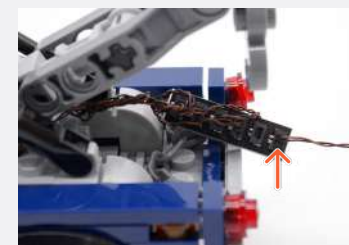


8

USB Power Cable



 Connect the other end to a 5V USB Power Bank, 5V USB Wall Adaptor, or USB to AA Battery Pack (sold separately)



Legend

 DISCONNECT

 CONNECT / RECONNECT

 TURN / FLIP

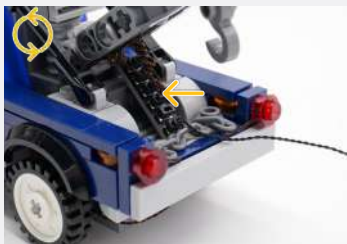
 DIRECTIONAL

 TWIST / BRAID

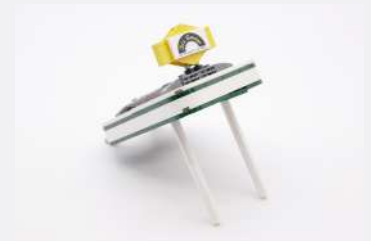
 POWER ON TEST

 NOTE ICON

50cm Connecting Cable



9



Legend

→ DISCONNECT

→ CONNECT / RECONNECT

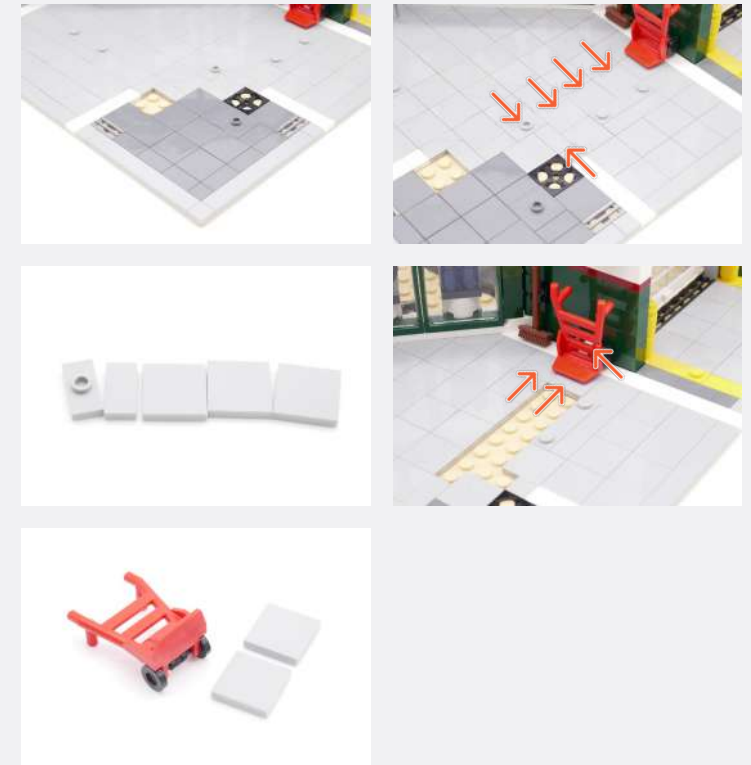
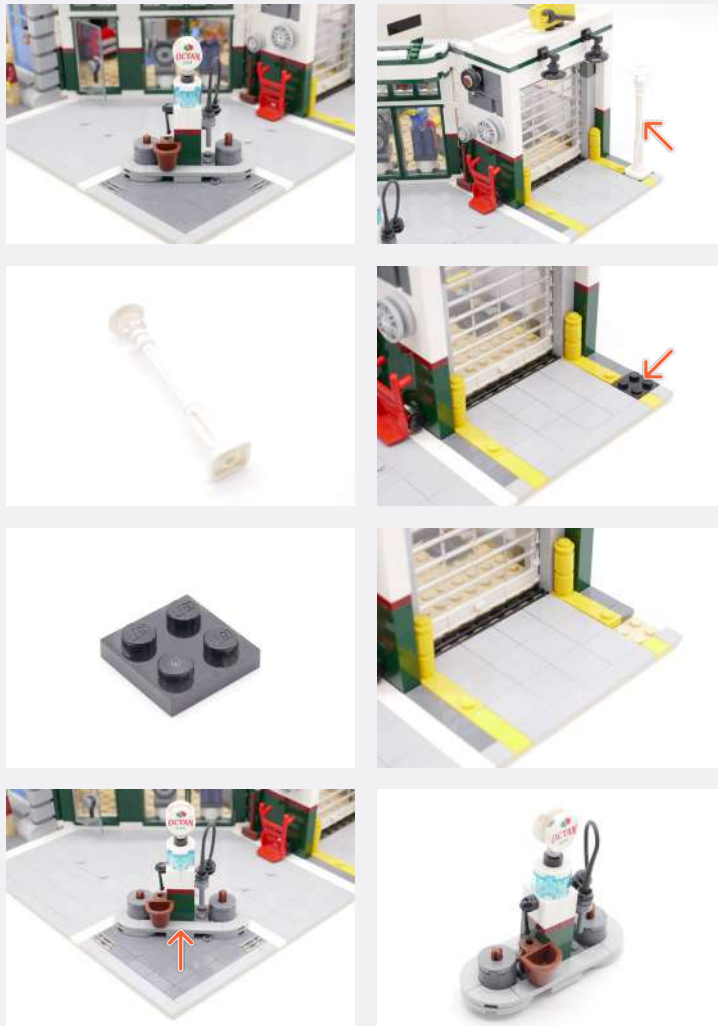
↻ TURN / FLIP

→ DIRECTIONAL

↻ TWIST / BRAID

✱ POWER ON TEST

📝 NOTE ICON



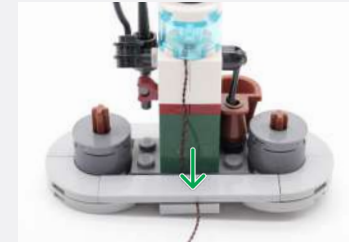
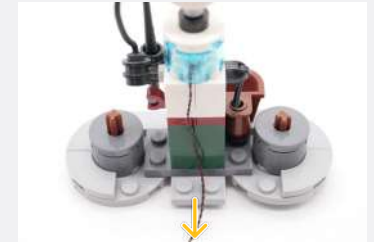
Legend

 DISCONNECT
  CONNECT / RECONNECT
  TURN / FLIP
  DIRECTIONAL
  TWIST / BRAID
  POWER ON TEST
  NOTE ICON

10



Blue 30cm Bit Light



Legend

→ DISCONNECT

→ CONNECT / RECONNECT

↻ TURN / FLIP

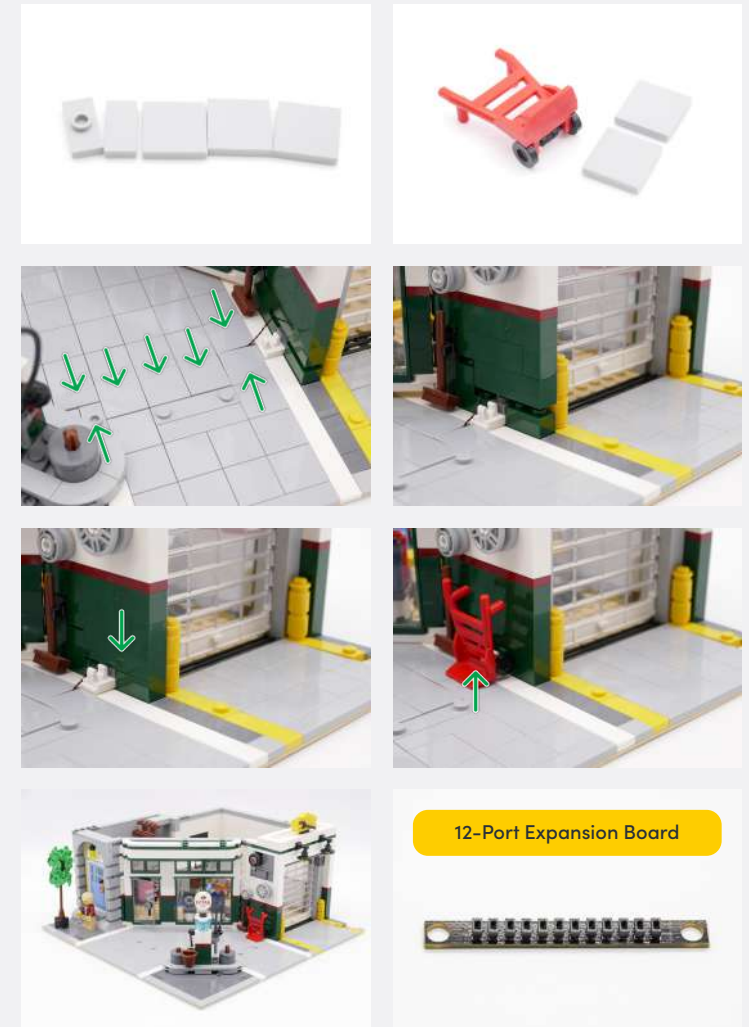
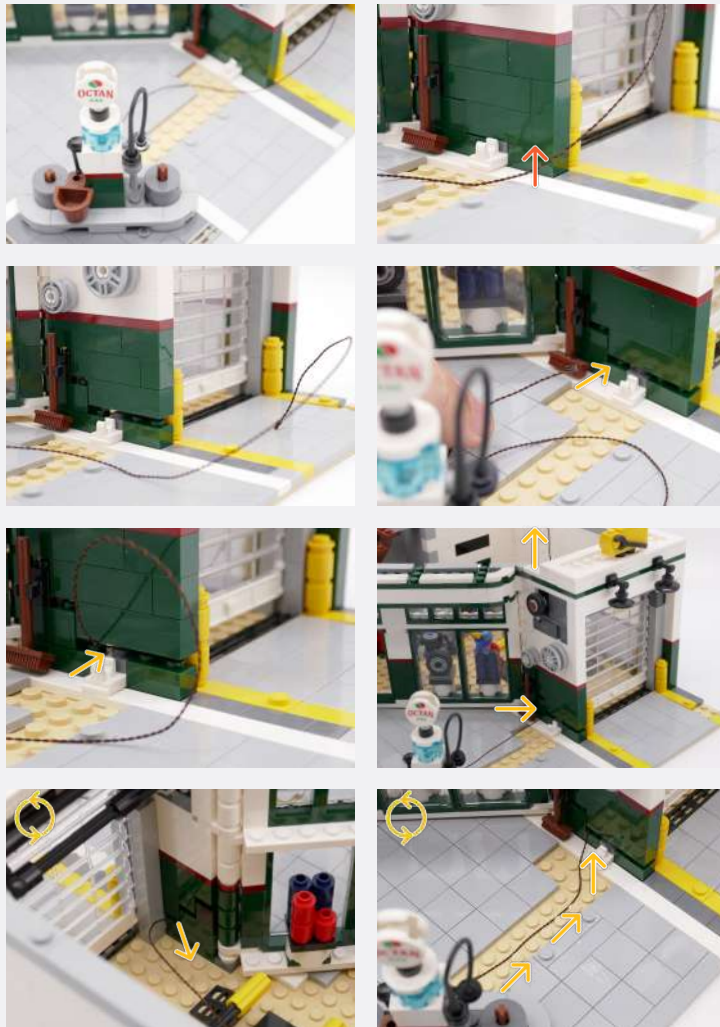
→ DIRECTIONAL

↻ TWIST / BRAID

✳ POWER ON TEST

📝 NOTE ICON

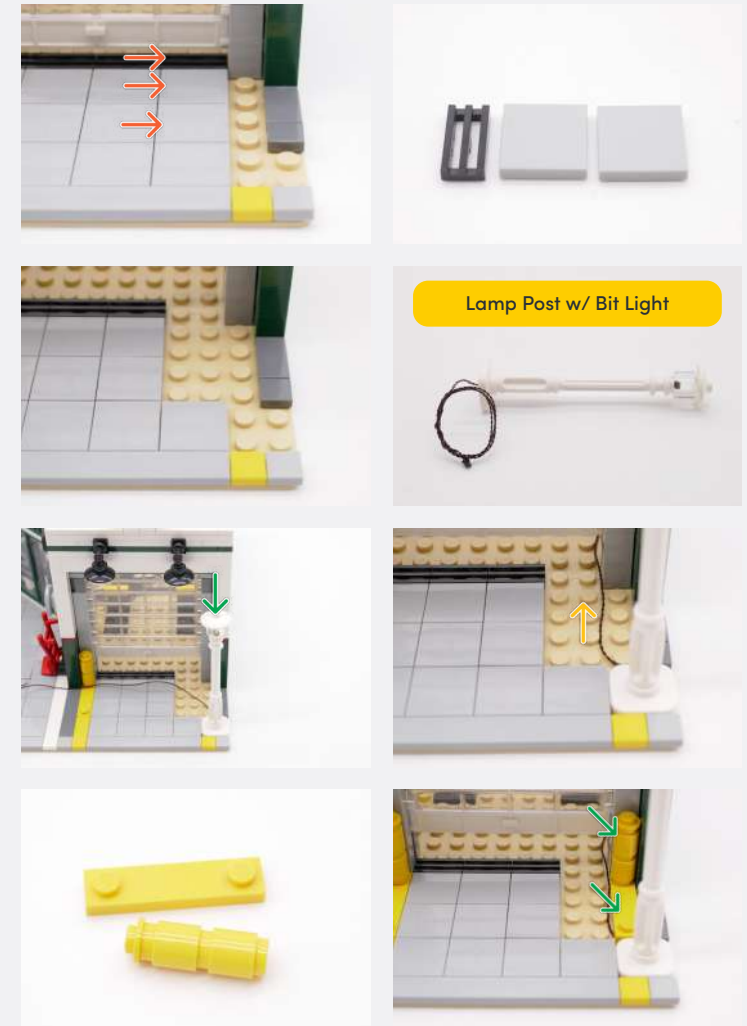
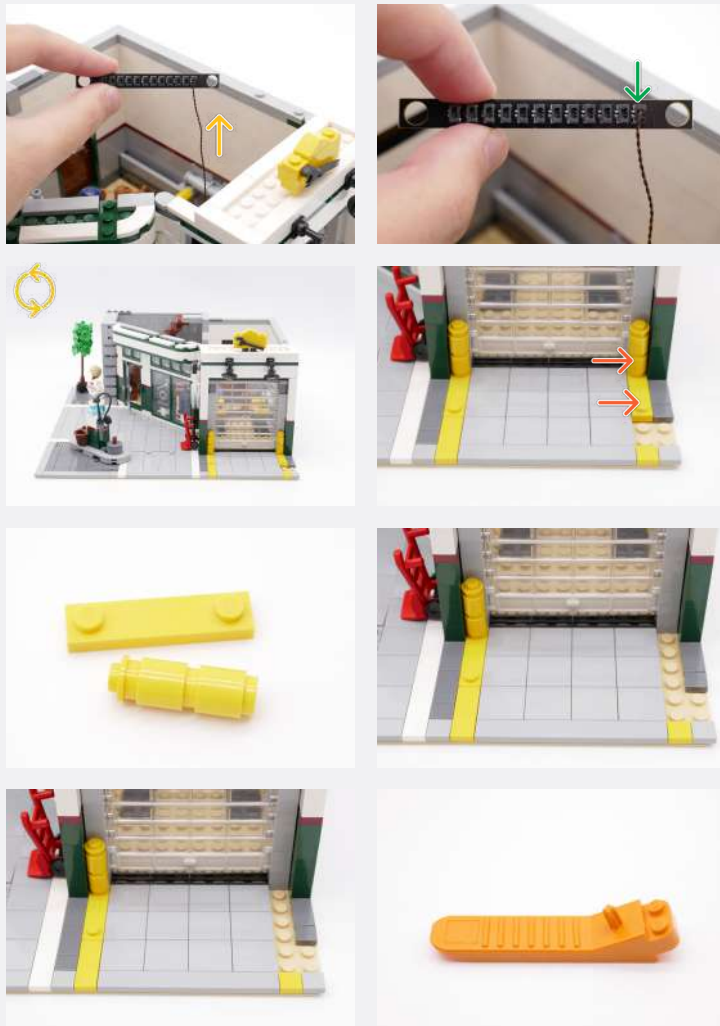
11



Legend

-  DISCONNECT
-  CONNECT / RECONNECT
-  TURN / FLIP
-  DIRECTIONAL
-  TWIST / BRAID
-  POWER ON TEST
-  NOTE ICON

12



Lamp Post w/ Bit Light

Legend

→ DISCONNECT

→ CONNECT / RECONNECT

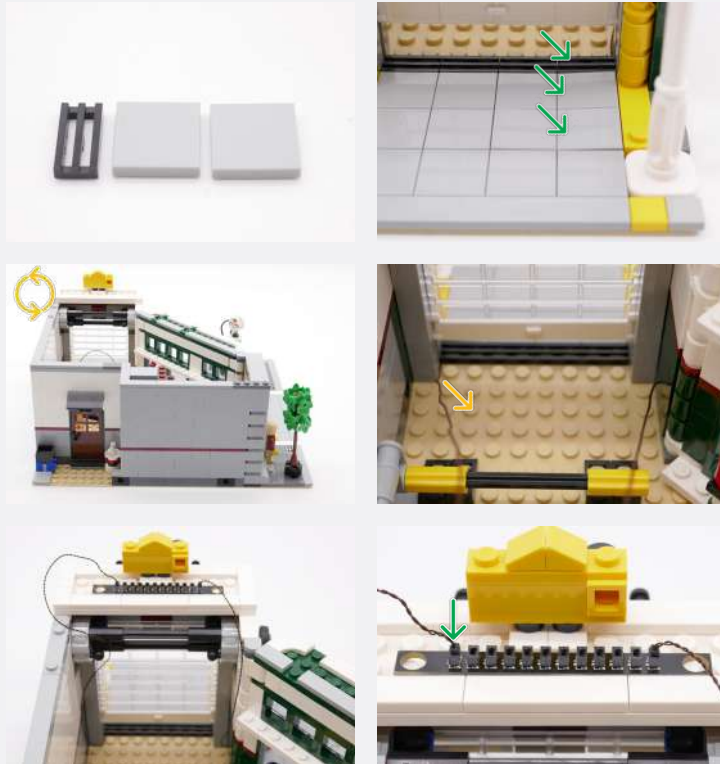
↻ TURN / FLIP

→ DIRECTIONAL

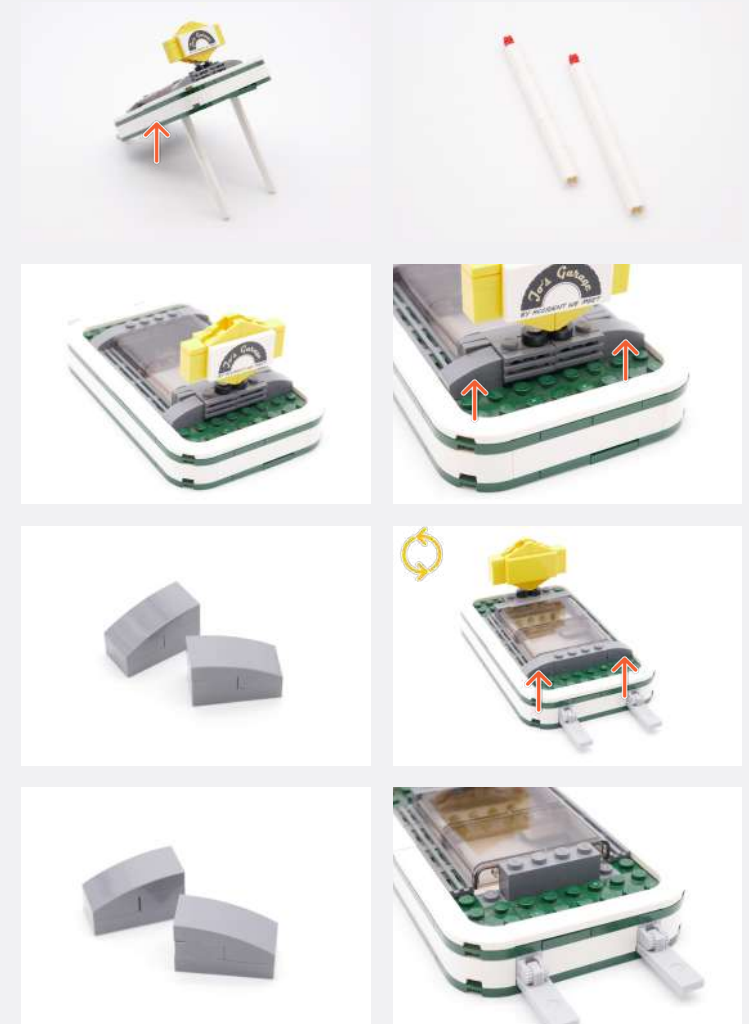
↻ TWIST / BRAID

✳ POWER ON TEST

📝 NOTE ICON



13



Legend

→ DISCONNECT → CONNECT / RECONNECT ↺ TURN / FLIP → DIRECTIONAL ↻ TWIST / BRAID ✨ POWER ON TEST 📝 NOTE ICON

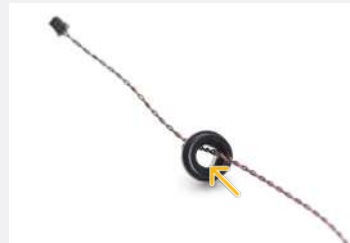
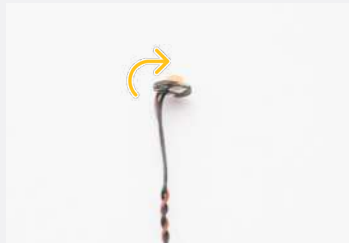
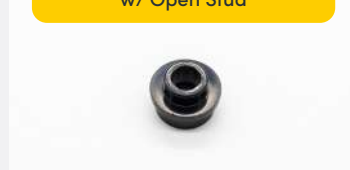
14



White 30cm Bit Light



Black Round Plate 1x1 w/ Open Stud



Black 1x1 Plate Modified Plate Rounded w/ Handle



Black 1x1 Tile w/ Clip Rounded Edges



x2



Legend

→ DISCONNECT

→ CONNECT / RECONNECT

↻ TURN / FLIP

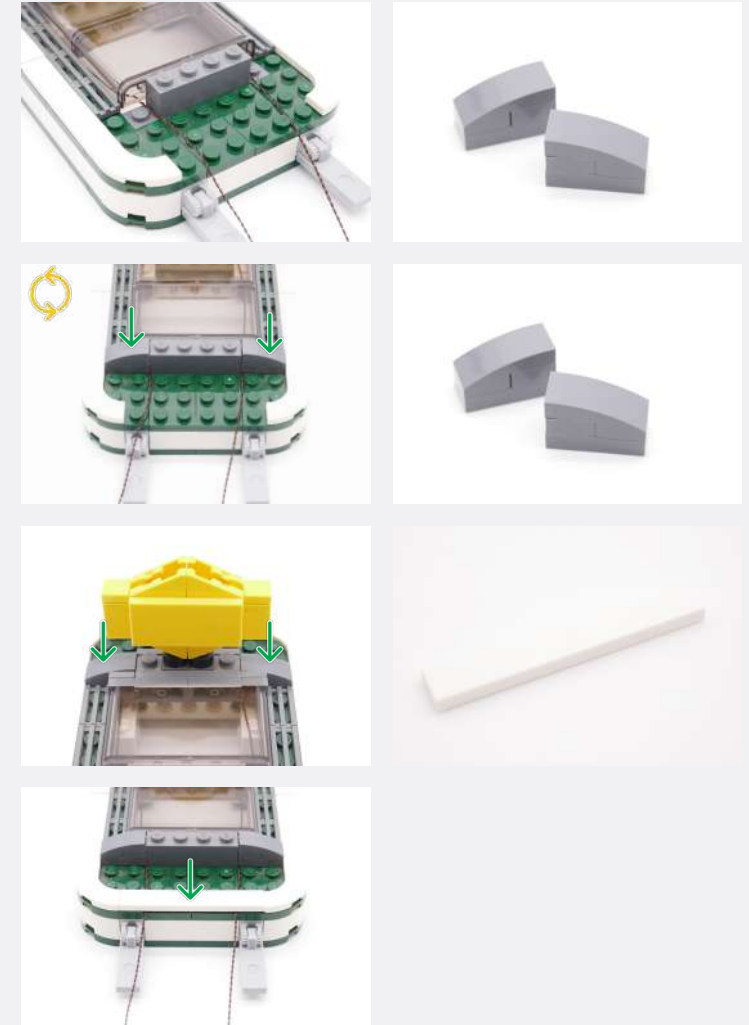
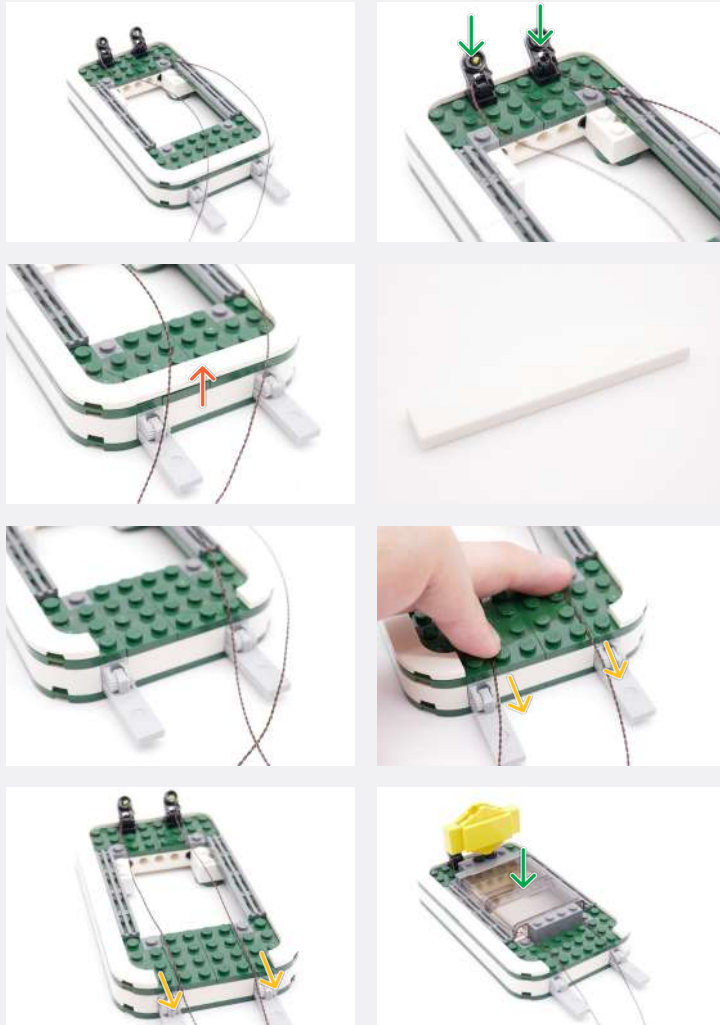
→ DIRECTIONAL

↻ TWIST / BRAID

☀ POWER ON TEST

📝 NOTE ICON

15



Legend

 DISCONNECT
  CONNECT / RECONNECT
  TURN / FLIP
  DIRECTIONAL
  TWIST / BRAID
  POWER ON TEST
  NOTE ICON

16

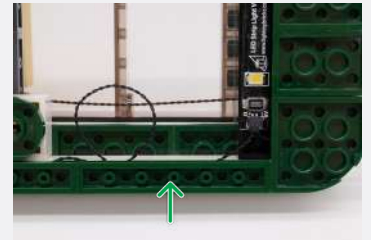
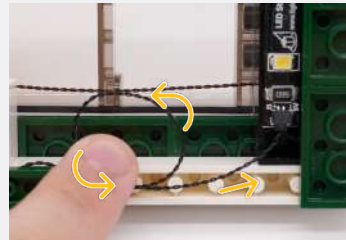
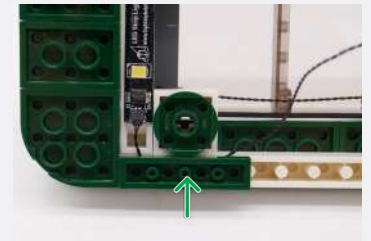
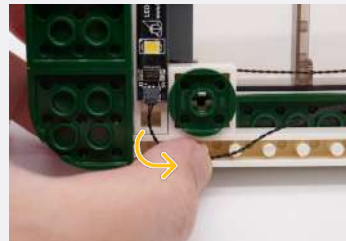
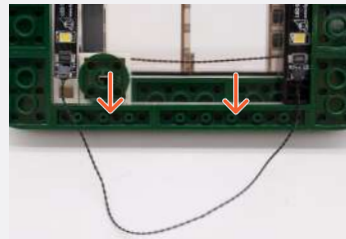
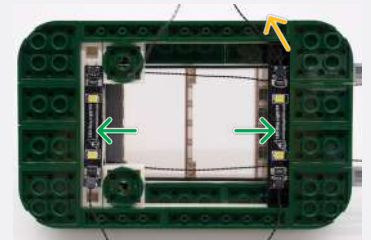
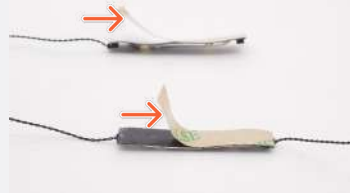
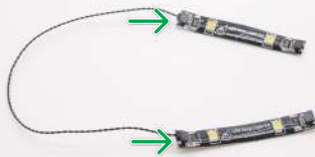
15cm Connecting Cable



2x White Strip Light



15cm Connecting Cable



Legend

→ DISCONNECT



CONNECT / RECONNECT



TURN / FLIP



DIRECTIONAL



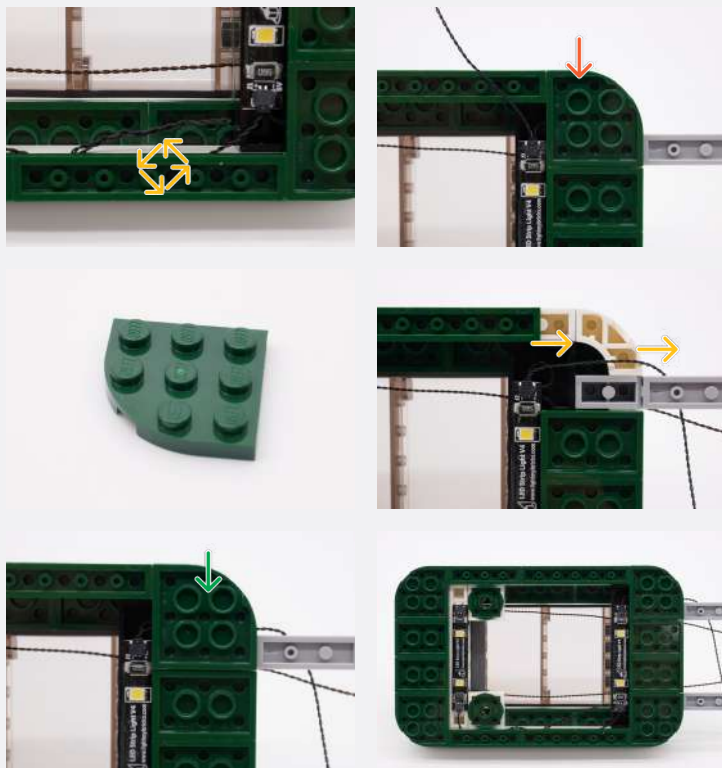
TWIST / BRAID



POWER ON TEST



NOTE ICON



17



Legend

→ DISCONNECT

→ CONNECT / RECONNECT

↻ TURN / FLIP

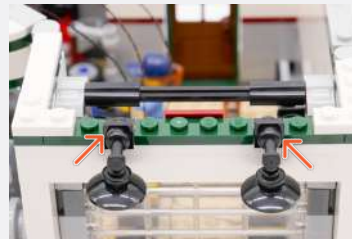
→ DIRECTIONAL

↻ TWIST / BRAID

✱ POWER ON TEST

📝 NOTE ICON

18



Legend

→ DISCONNECT

→ CONNECT / RECONNECT

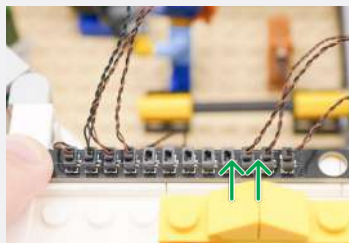
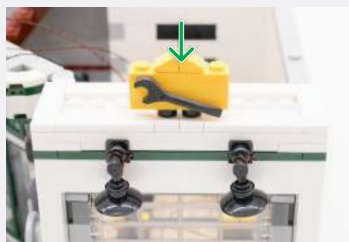
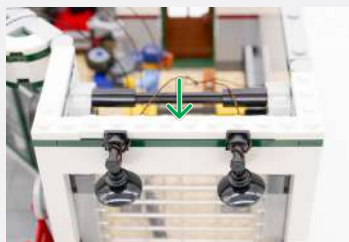
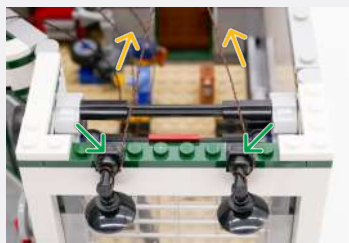
↻ TURN / FLIP

→ DIRECTIONAL

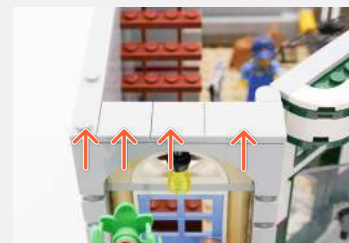
↻ TWIST / BRAID

✱ POWER ON TEST

📝 NOTE ICON



19



Legend

→ DISCONNECT

→ CONNECT / RECONNECT

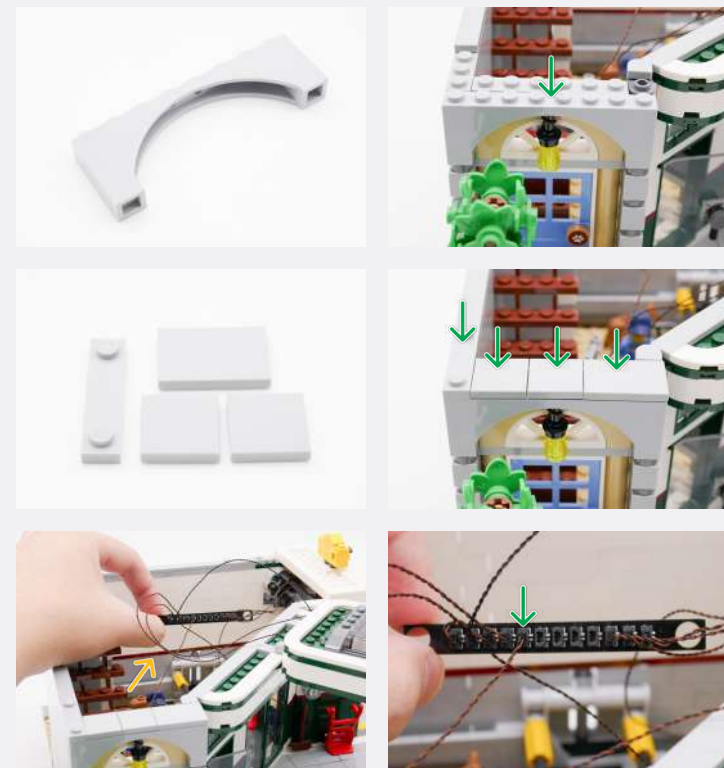
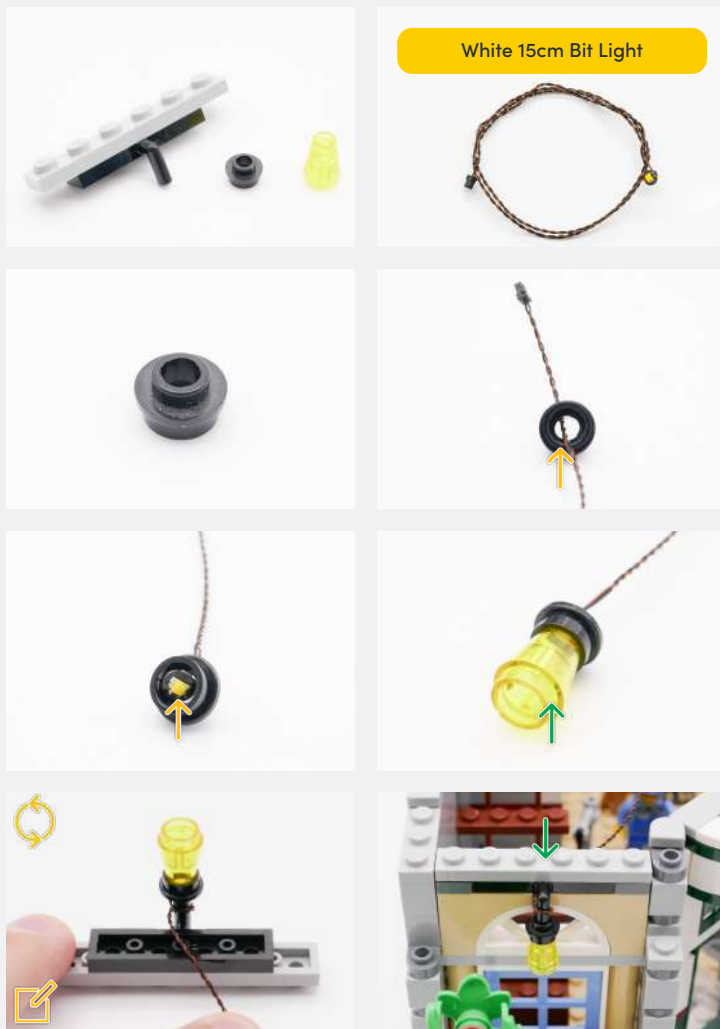
↻ TURN / FLIP

→ DIRECTIONAL

↻ TWIST / BRAID

✱ POWER ON TEST

📝 NOTE ICON



Legend

→ DISCONNECT

→ CONNECT / RECONNECT

↻ TURN / FLIP

→ DIRECTIONAL

↻ TWIST / BRAID

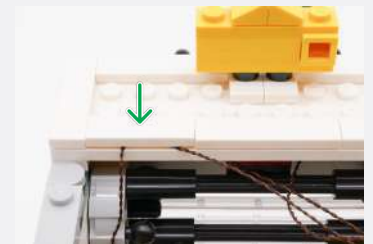
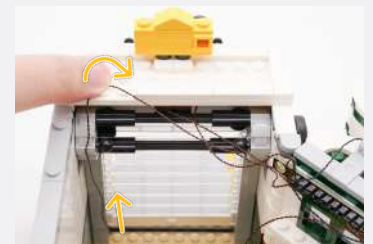
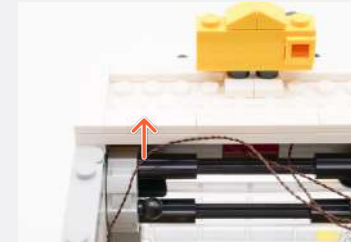
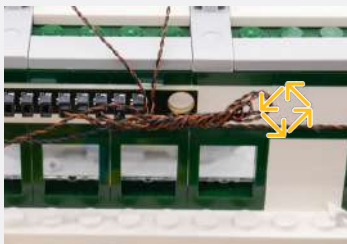
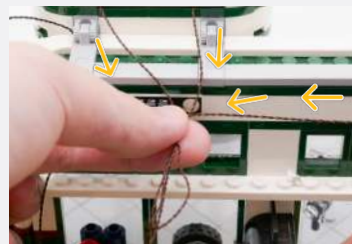
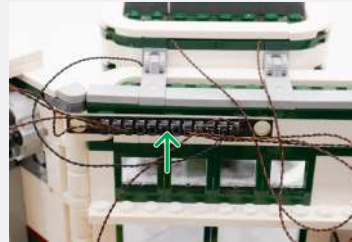
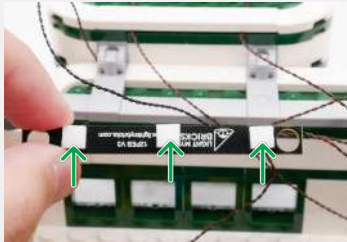
⚡ POWER ON TEST

📌 NOTE ICON

20



3x Adhesive Squares



Legend

→ DISCONNECT

→ CONNECT / RECONNECT

↻ TURN / FLIP

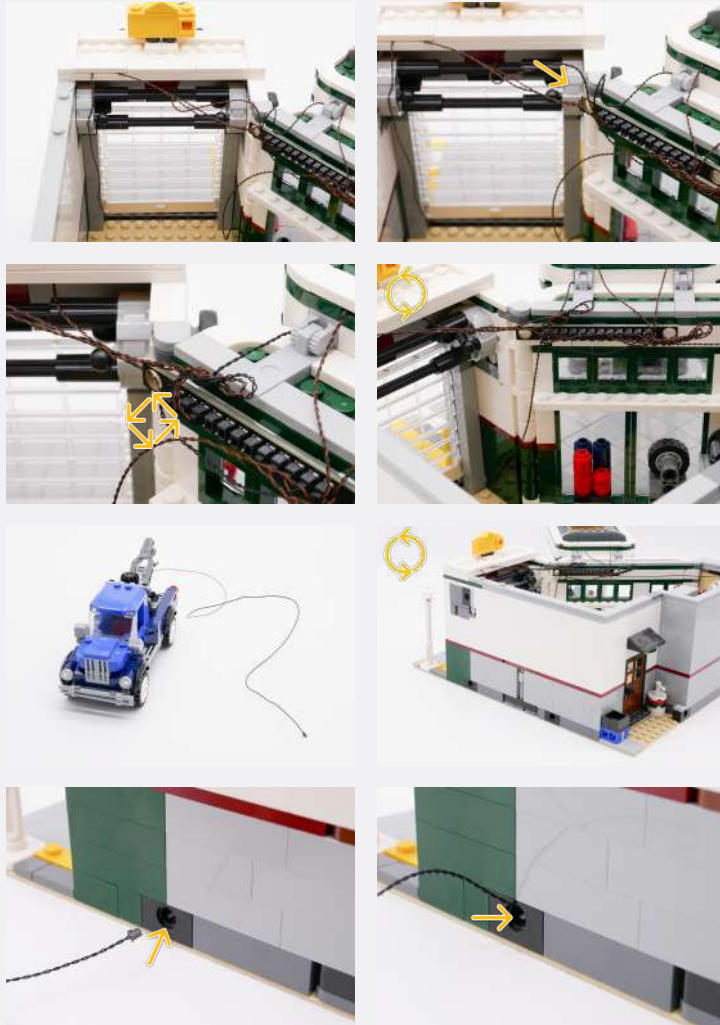
→ DIRECTIONAL

↻ TWIST / BRAID

✳ POWER ON TEST

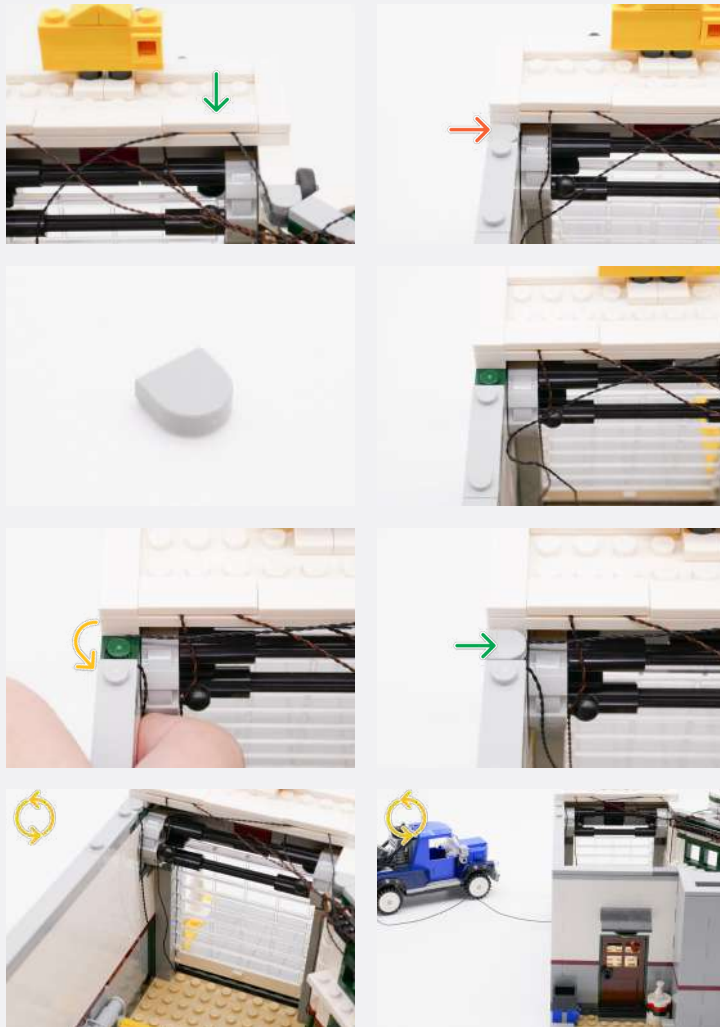
📝 NOTE ICON

21



Legend

- DISCONNECT
- CONNECT / RECONNECT
- ↻ TURN / FLIP
- DIRECTIONAL
- ↻ TWIST / BRAID
- ⚡ POWER ON TEST
- 📝 NOTE ICON



22

Connect the USB Power Cable to the 12-Port Expansion Board.



Legend

→ DISCONNECT

→ CONNECT / RECONNECT

↻ TURN / FLIP

→ DIRECTIONAL

↻ TWIST / BRAID

⚡ POWER ON TEST

📌 NOTE ICON

🔧 If you experience any issues with the lights not working and suspect an issue with a component, please try a different port on the expansion board to verify where the fault lies (with the light or expansion board). To correct any issues with expansion board ports, please view the section addressing expansion board issues in our troubleshooting section.

23



🔧 If you have purchased additional components separately to utilize Wireless Power Connectors, please proceed to [page 54](#). Otherwise, please continue onto the next step.

Plate 1x6 (Any Colour)



White Strip Light



x2

15cm Connecting Cable



15cm Connecting Cable



30cm Connecting Cable



Legend

→ DISCONNECT

→ CONNECT / RECONNECT

↻ TURN / FLIP

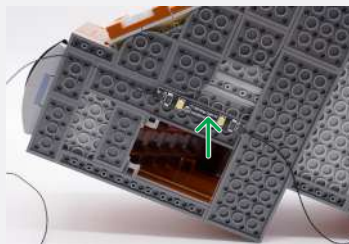
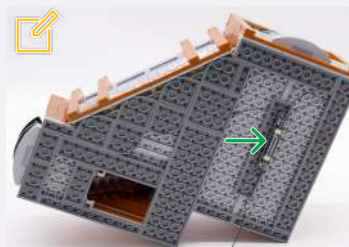
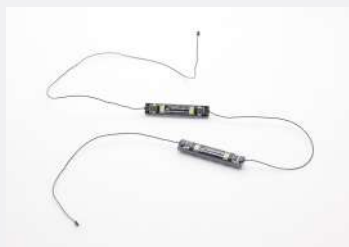
→ DIRECTIONAL

↻ TWIST / BRAID

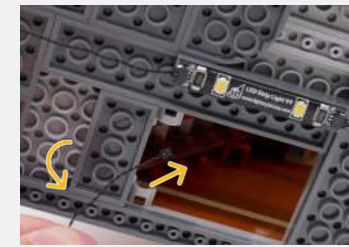
✱ POWER ON TEST

🔧 NOTE ICON

24



Connect the Strip Light with the loose 30cm Connecting Cable



Legend

DISCONNECT

CONNECT / RECONNECT

TURN / FLIP

DIRECTIONAL

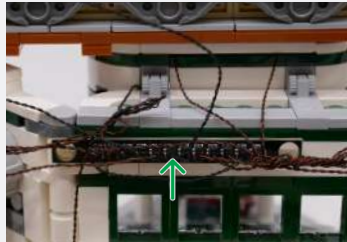
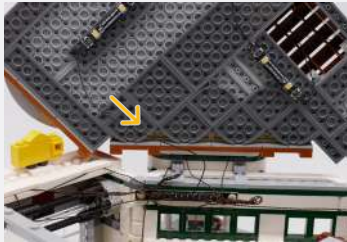
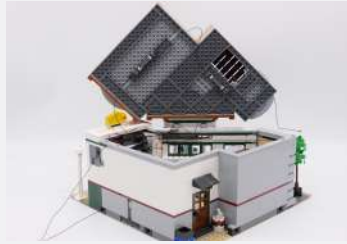
TWIST / BRAID

POWER ON TEST

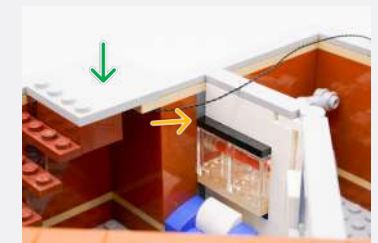
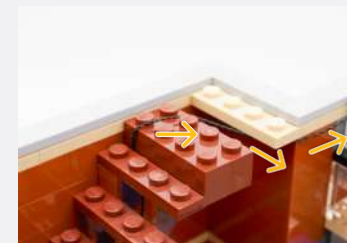
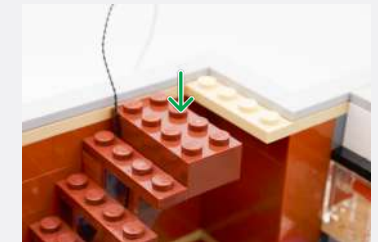
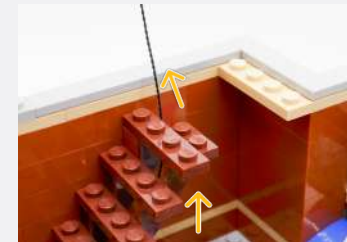
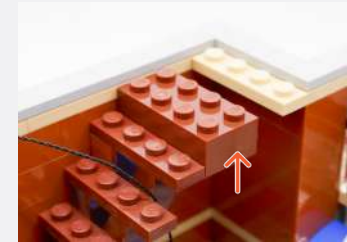
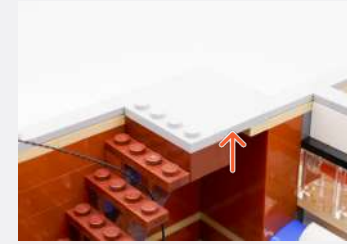
NOTE ICON

25

✂ Connect the loose 15cm Connecting Cable from the previous step to the 12-Port Expansion Board



26



Legend

→ DISCONNECT

→ CONNECT / RECONNECT


↻ TURN / FLIP

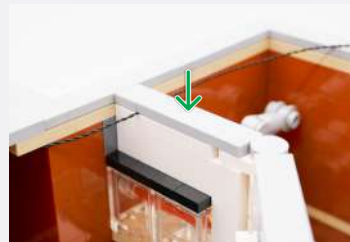
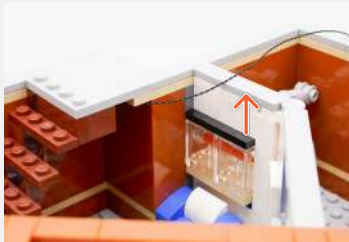
→ DIRECTIONAL

↻ TWIST / BRAID

☀ POWER ON TEST

✂ NOTE ICON

 If you experience any issues with the lights not working and suspect an issue with a component, please try a different port on the expansion board to verify where the fault lies (with the light or expansion board). To correct any issues with expansion board ports, please view the section addressing expansion board issues in our troubleshooting section.



27

Plate 1x6 (Any Colour)



White Strip Light



x2

15cm Connecting Cable



Legend

 DISCONNECT

 CONNECT / RECONNECT

 TURN / FLIP

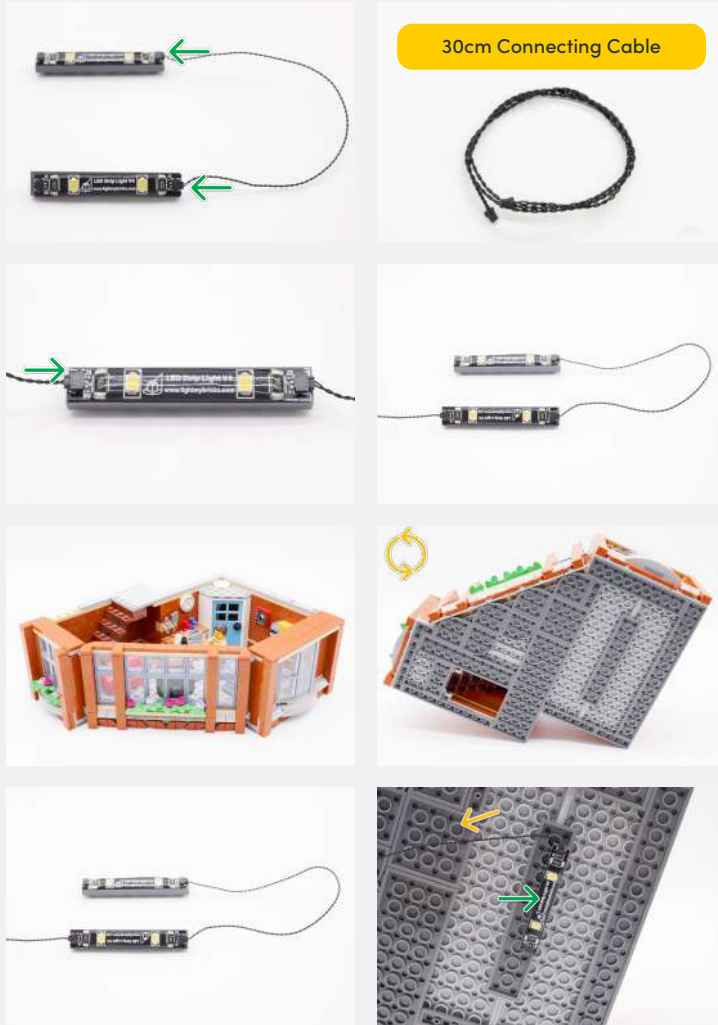
 DIRECTIONAL

 TWIST / BRAID

 POWER ON TEST

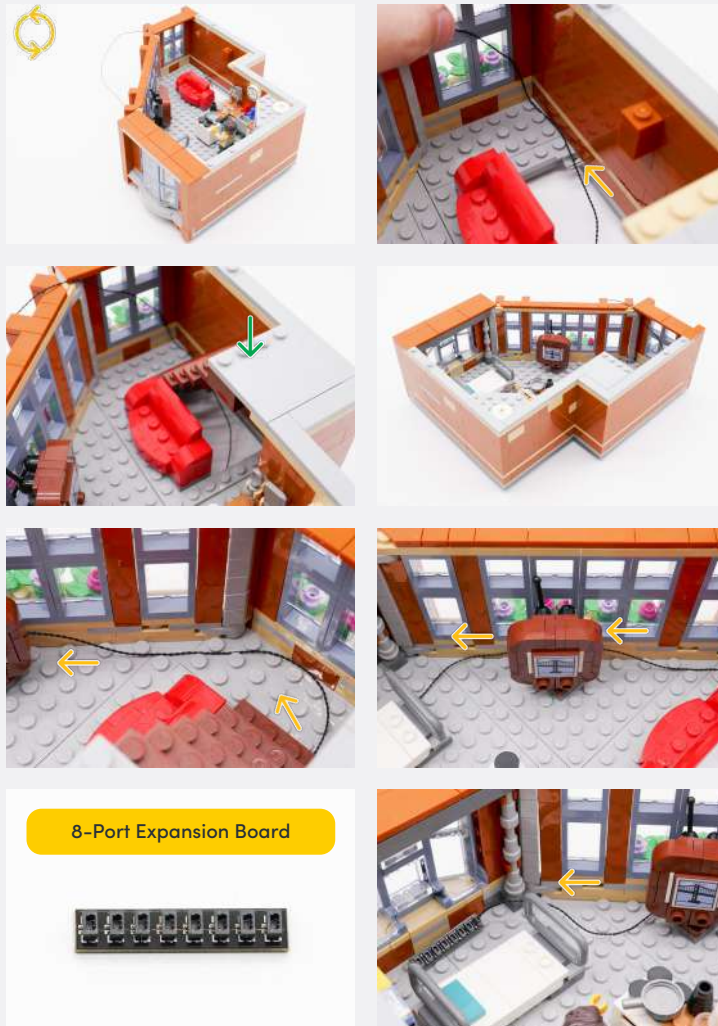
 NOTE ICON

28



Legend

 DISCONNECT
  CONNECT / RECONNECT
  TURN / FLIP
  DIRECTIONAL
  TWIST / BRAID
  POWER ON TEST
  NOTE ICON



29



Legend

 DISCONNECT
  CONNECT / RECONNECT
  TURN / FLIP
  DIRECTIONAL
  TWIST / BRAID
  POWER ON TEST
  NOTE ICON



30

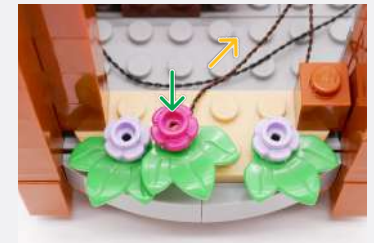
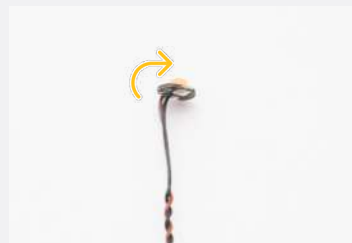
White 30cm Bit Light



Legend

 DISCONNECT
  CONNECT / RECONNECT
  TURN / FLIP
  DIRECTIONAL
  TWIST / BRAID
  POWER ON TEST
  NOTE ICON

31



Legend

→ DISCONNECT

→ CONNECT / RECONNECT

↻ TURN / FLIP

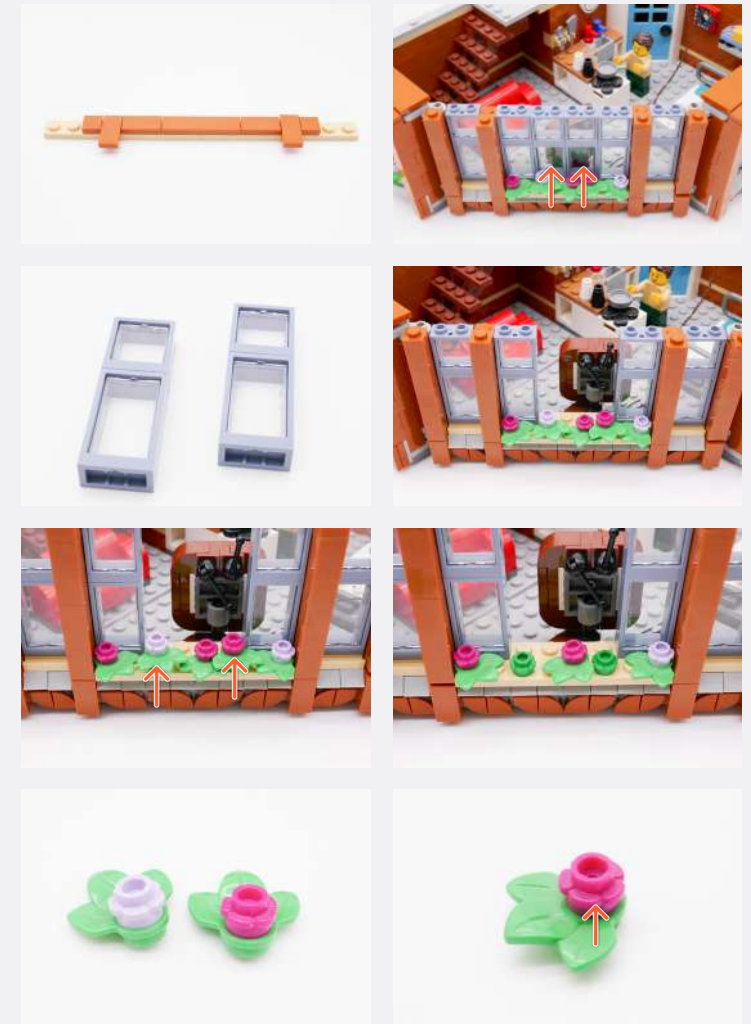
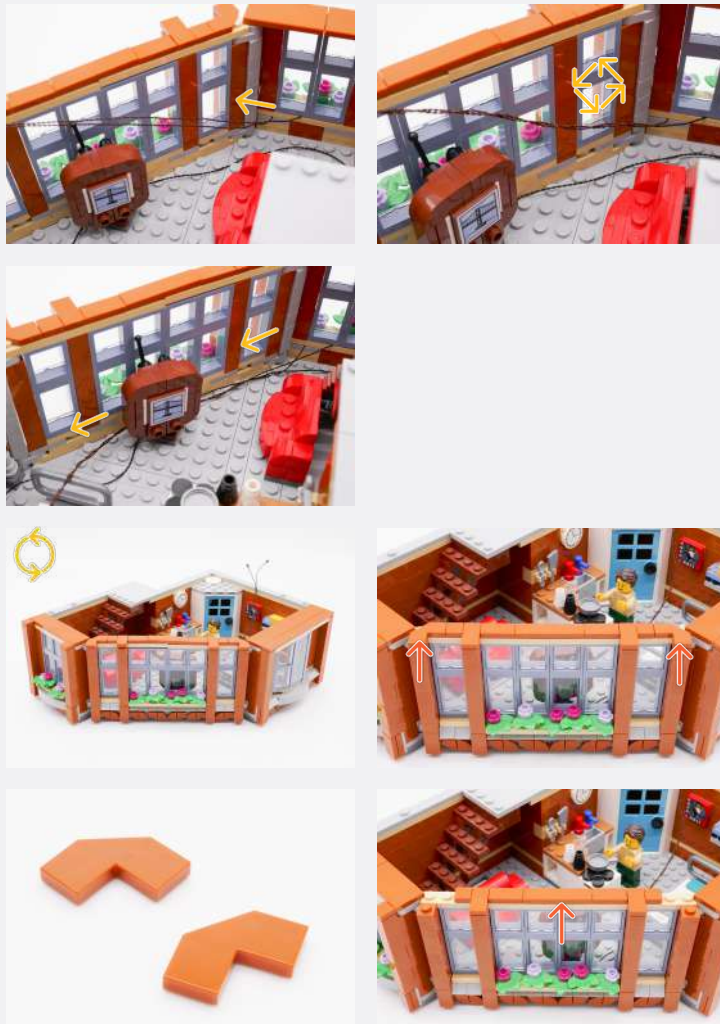
→ DIRECTIONAL

↻ TWIST / BRAID

✳ POWER ON TEST

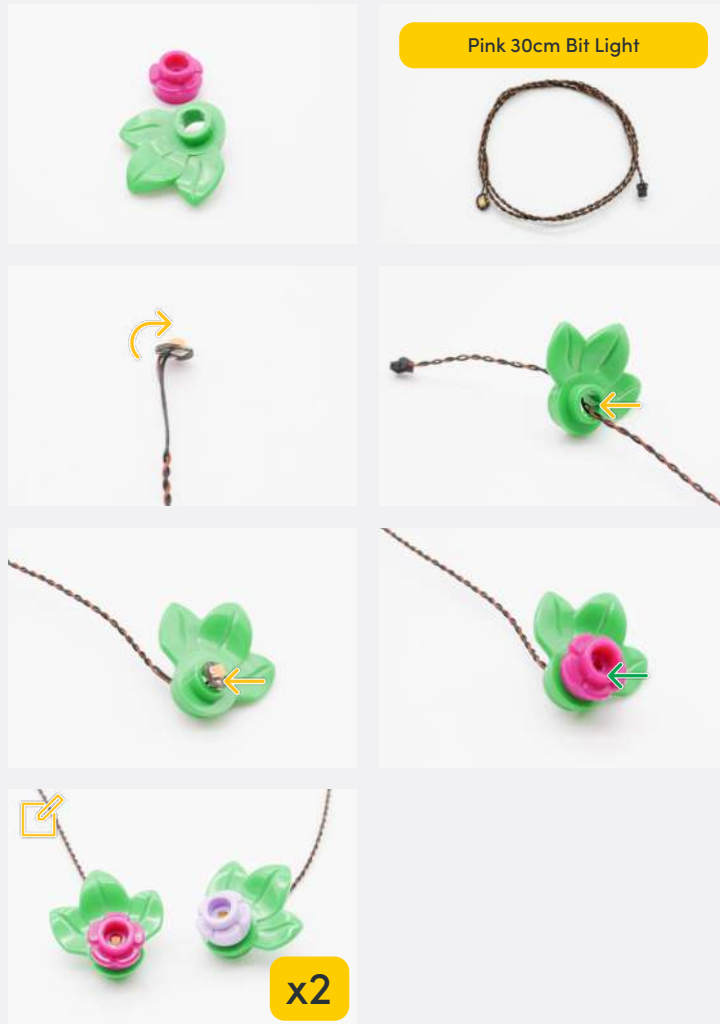
📝 NOTE ICON

32

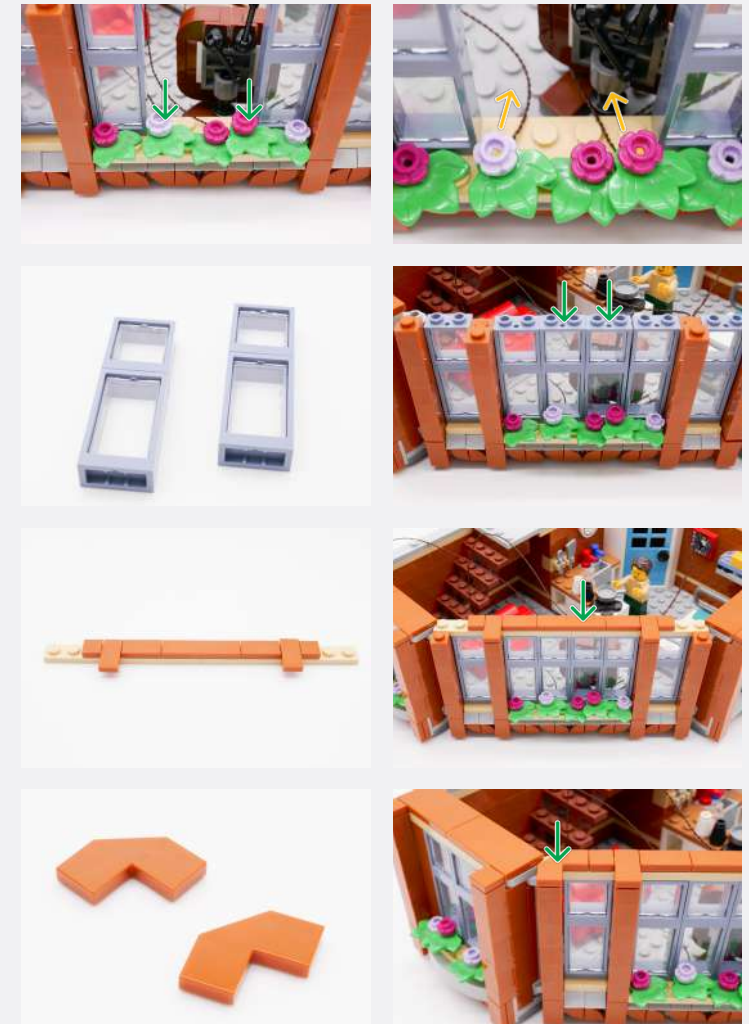


Legend

 DISCONNECT
  CONNECT / RECONNECT
  TURN / FLIP
  DIRECTIONAL
  TWIST / BRAID
  POWER ON TEST
  NOTE ICON



33



Legend

DISCONNECT
 CONNECT / RECONNECT
 TURN / FLIP
 DIRECTIONAL
 TWIST / BRAID
 POWER ON TEST
 NOTE ICON

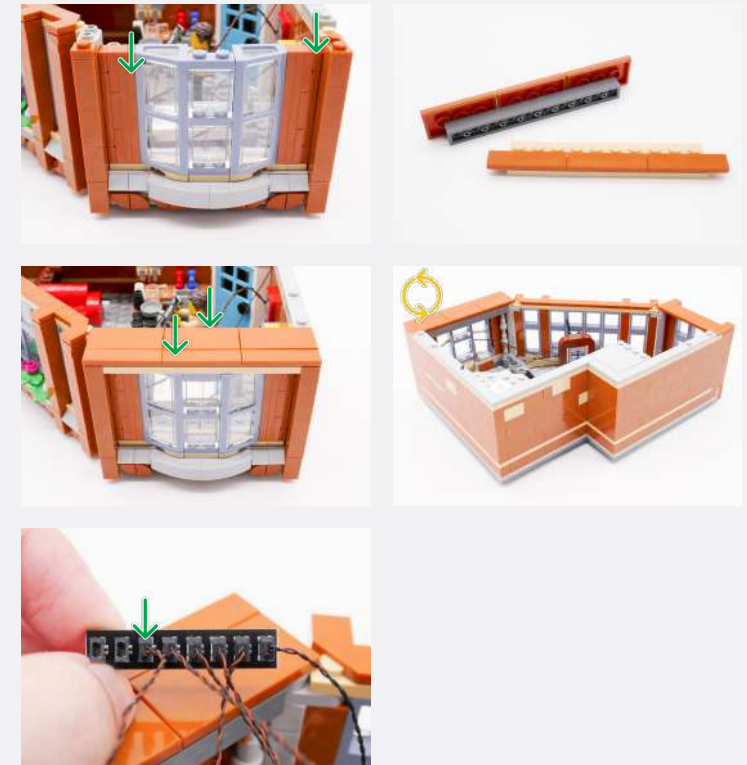
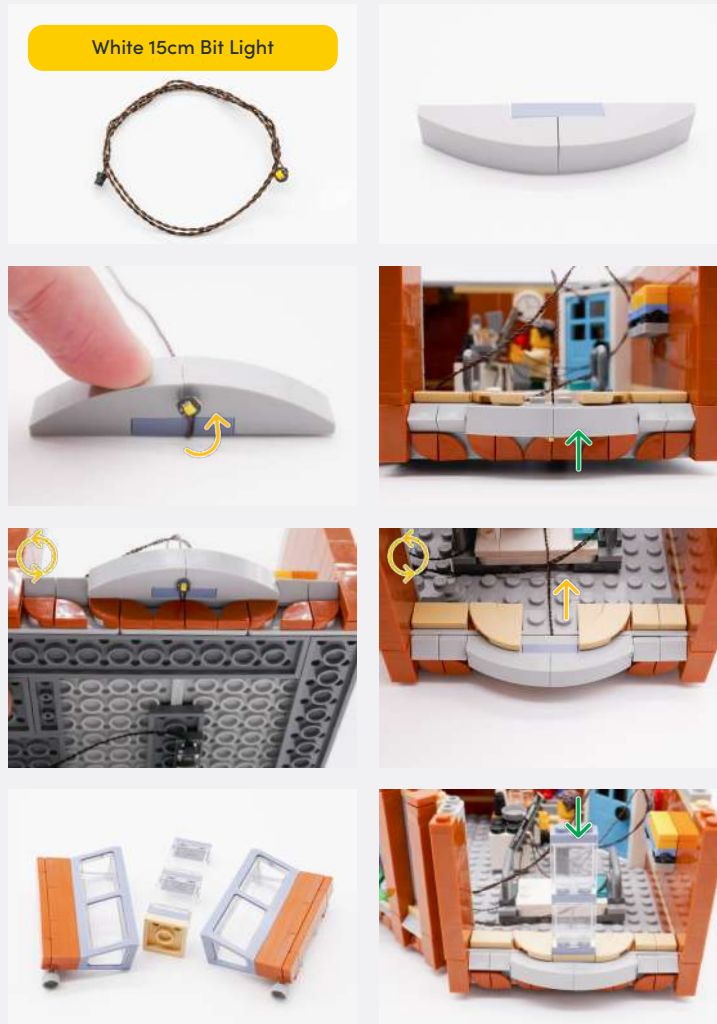


34



Legend

 DISCONNECT
  CONNECT / RECONNECT
  TURN / FLIP
  DIRECTIONAL
  TWIST / BRAID
  POWER ON TEST
  NOTE ICON



Legend

→ DISCONNECT

→ CONNECT / RECONNECT

↻ TURN / FLIP

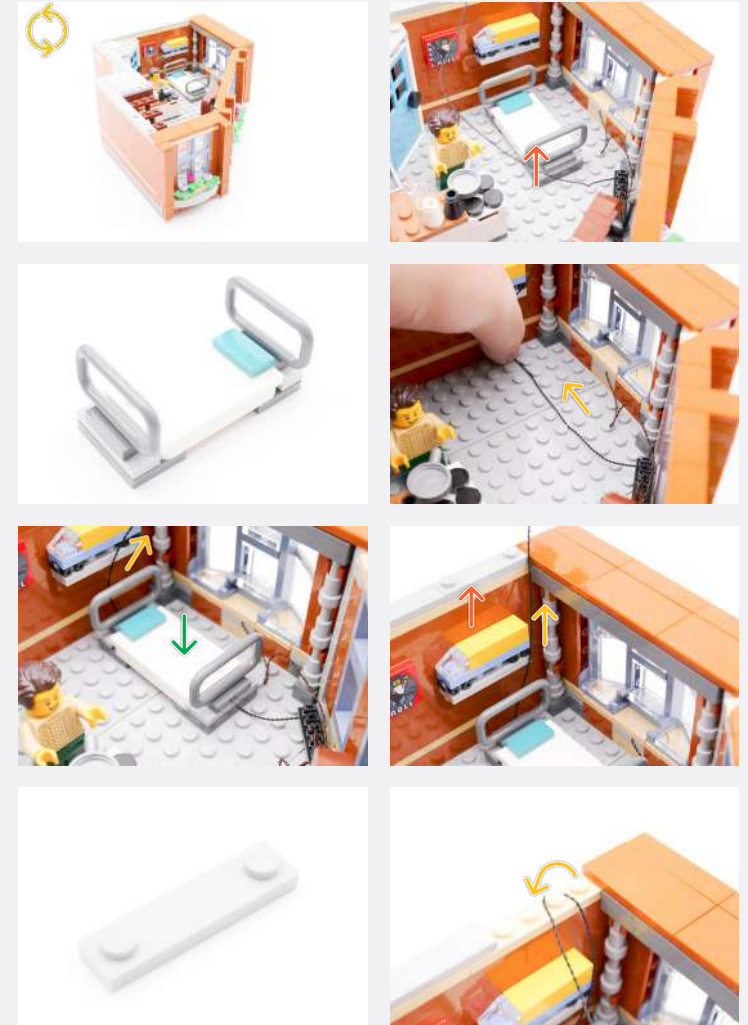
→ DIRECTIONAL

↻ TWIST / BRAID

⚡ POWER ON TEST

📝 NOTE ICON

35



Legend

 DISCONNECT
  CONNECT / RECONNECT
  TURN / FLIP
  DIRECTIONAL
  TWIST / BRAID
  POWER ON TEST
  NOTE ICON

🔧 If you experience any issues with the lights not working and suspect an issue with a component, please try a different port on the expansion board to verify where the fault lies (with the light or expansion board). To correct any issues with expansion board ports, please view the section addressing expansion board issues in our troubleshooting section.

36

🔧 Connect the loose 15cm Connecting Cable from step 26 to the Strip Light from step 28.

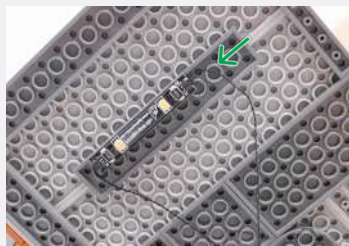
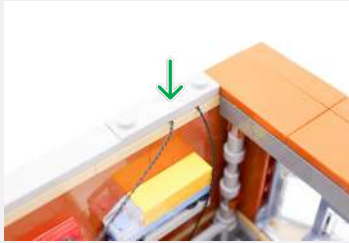


Plate 1x6 (Any Colour)



White Strip Light



Legend

→ DISCONNECT

→ CONNECT / RECONNECT

↻ TURN / FLIP

→ DIRECTIONAL

↻ TWIST / BRAID

☀ POWER ON TEST

🔧 NOTE ICON



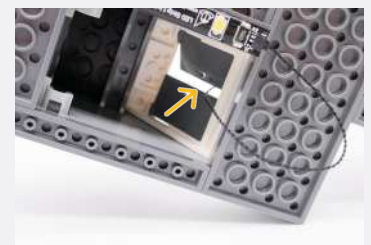
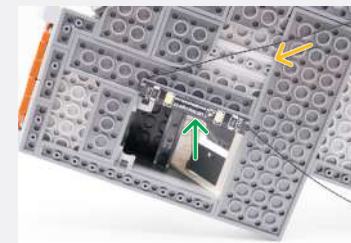
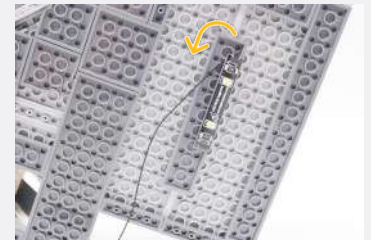
15cm Connecting Cable



15cm Connecting Cable



37



Legend

→ DISCONNECT

→ CONNECT / RECONNECT

↻ TURN / FLIP

→ DIRECTIONAL

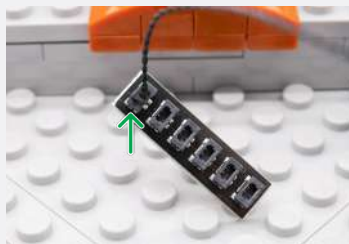
↻ TWIST / BRAID

✱ POWER ON TEST

📝 NOTE ICON



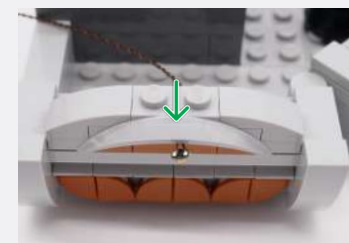
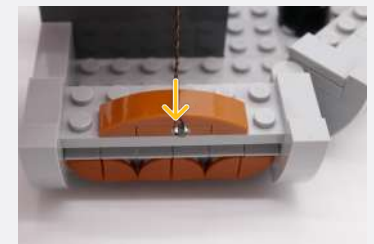
6-Port Expansion Board



38



White 15cm Bit Light



Legend

→ DISCONNECT

→ CONNECT / RECONNECT

↻ TURN / FLIP

→ DIRECTIONAL

↻ TWIST / BRAID

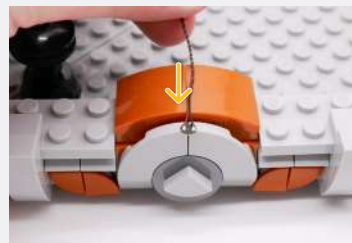
✱ POWER ON TEST

📝 NOTE ICON

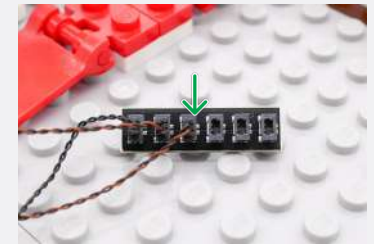
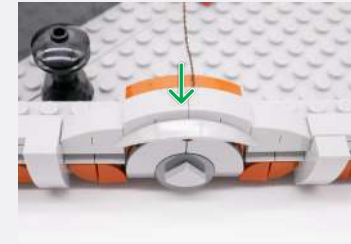
39



White 15cm Bit Light



40



White 30cm Bit Light



Legend

→ DISCONNECT

→ CONNECT / RECONNECT

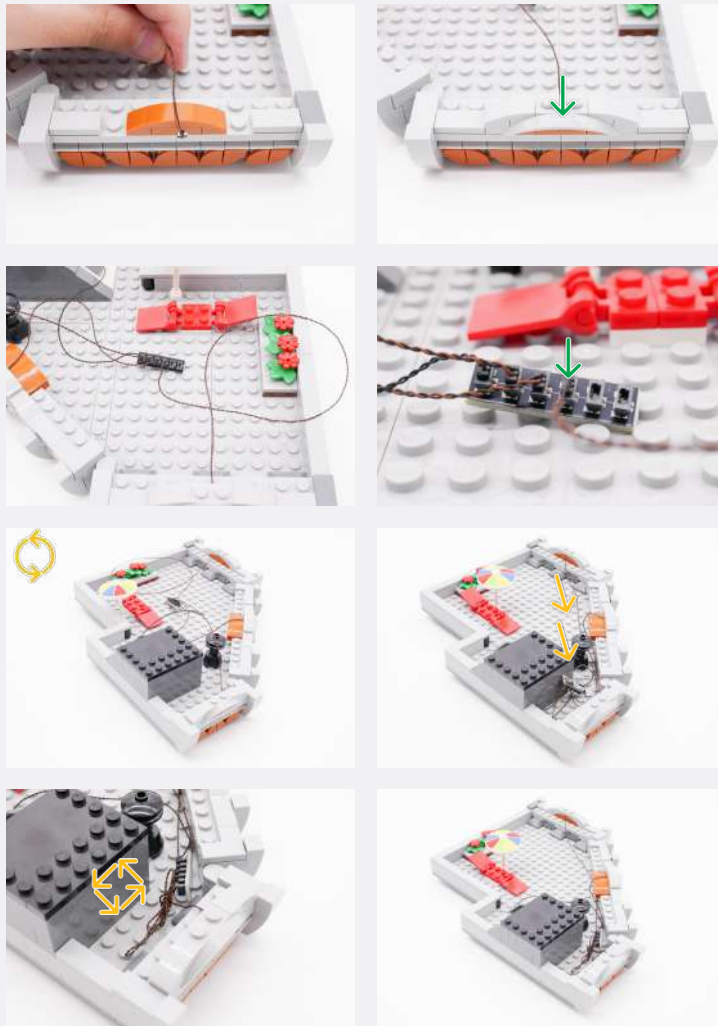
↻ TURN / FLIP

→ DIRECTIONAL

↻ TWIST / BRAID

✳ POWER ON TEST

📝 NOTE ICON




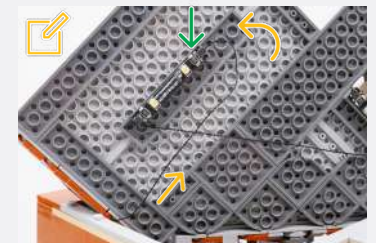
41



2x Adhesive Squares



 Connect the loose Connecting Cable from the second floor to the Strip Light on the roof



Legend

 DISCONNECT

 CONNECT / RECONNECT


 TURN / FLIP

 DIRECTIONAL

 TWIST / BRAID

 POWER ON TEST

 NOTE ICON

 If you experience any issues with the lights not working and suspect an issue with a component, please try a different port on the expansion board to verify where the fault lies (with the light or expansion board). To correct any issues with expansion board ports, please view the section addressing expansion board issues in our troubleshooting section.



Legend

 DISCONNECT

 CONNECT / RECONNECT

 TURN / FLIP

 DIRECTIONAL

 TWIST / BRAID

 POWER ON TEST

 NOTE ICON



WIRELESS POWER CONNECTORS

If you have purchased additional components separately to utilise Wireless Power Connectors, please continue onto the next page.

--

Components List:

3 x Wireless Power Connectors sets (available to purchase in a 2pk)

2 x 2-Port Expansion Board (available to purchase in a 4pk)

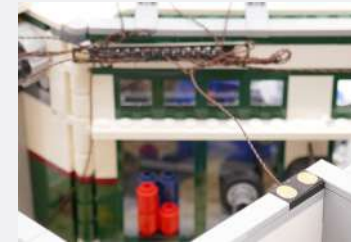
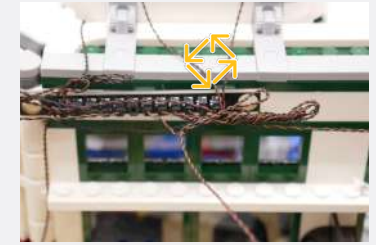
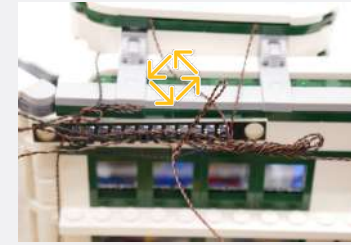
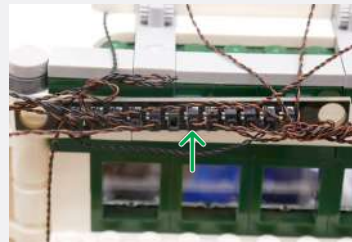
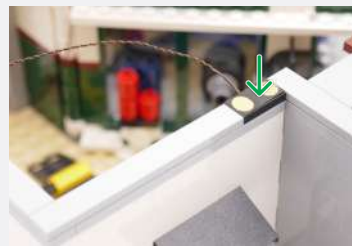
3 x Plate 1x6 (Any Colour)

NOTE: *If you choose to use the Wireless Power Connectors, we recommend purchasing the aforementioned components before beginning.*

23b



Wireless Power Connector
(Tile Side)



Legend

→ DISCONNECT

→ CONNECT / RECONNECT

↻ TURN / FLIP

→ DIRECTIONAL

↻ TWIST / BRAID

✳ POWER ON TEST

📝 NOTE ICON

24b

Plate 1x6 (Any Colour)

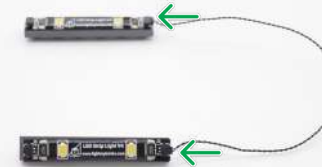


White Strip Light



x2

15cm Connecting Cable



15cm Connecting Cable


Wireless Power Connector
(Plate Side)

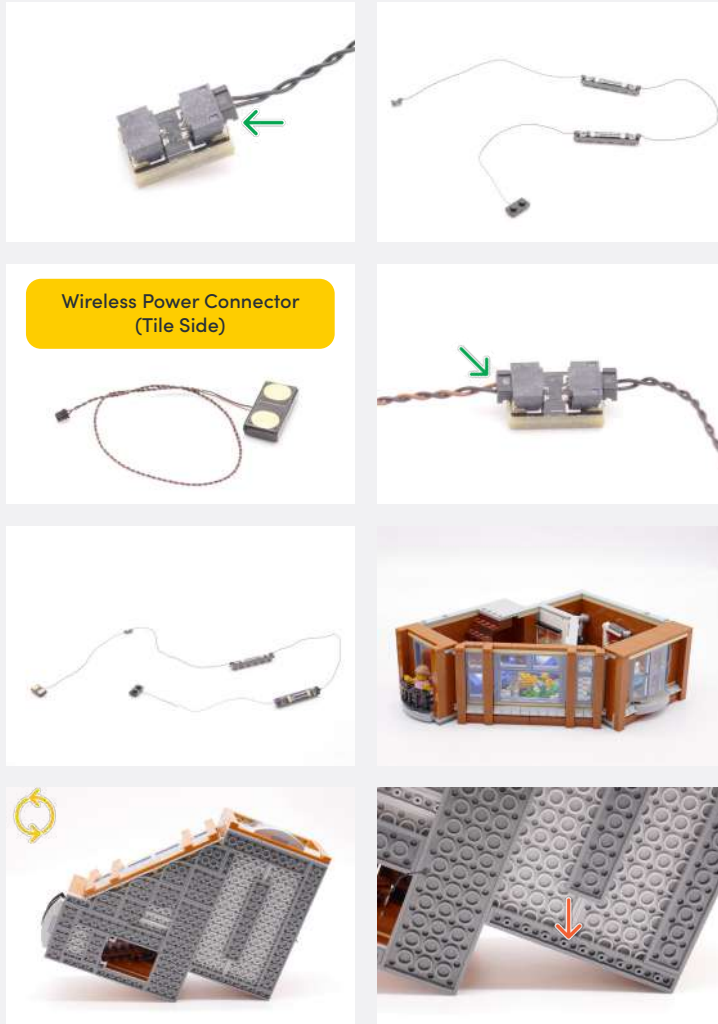

2-Port Expansion Board



Legend

DISCONNECT
 CONNECT / RECONNECT
 TURN / FLIP
 DIRECTIONAL
 TWIST / BRAID
 POWER ON TEST
 NOTE ICON

25b



Ensure the Connecting Cable is on the top side



Legend

→ DISCONNECT

→ CONNECT / RECONNECT

↻ TURN / FLIP

→ DIRECTIONAL

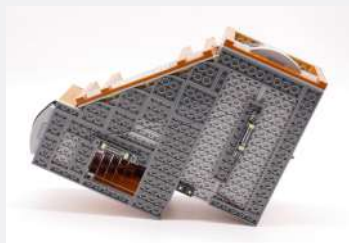
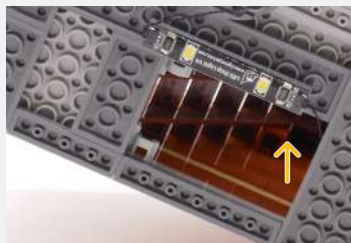
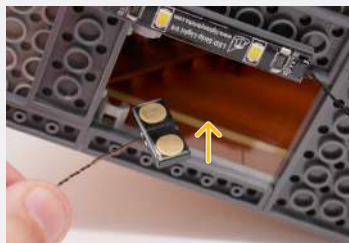
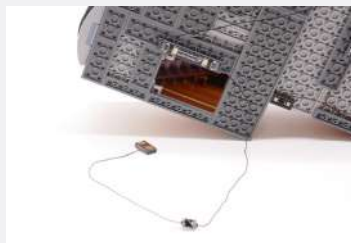
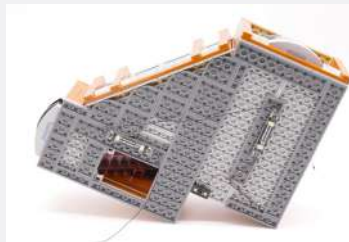
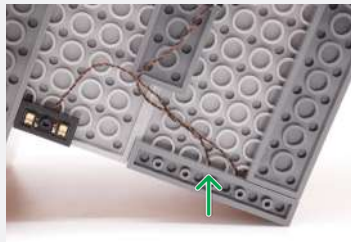
↻ TWIST / BRAID

✳ POWER ON TEST

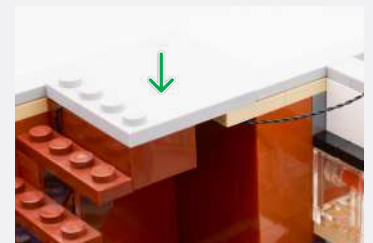
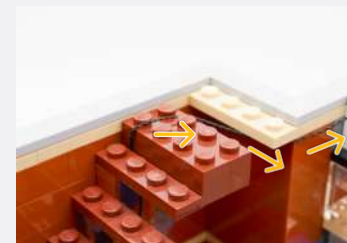
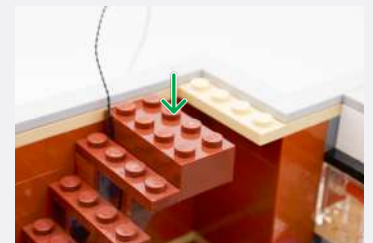
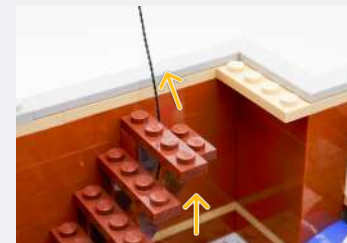
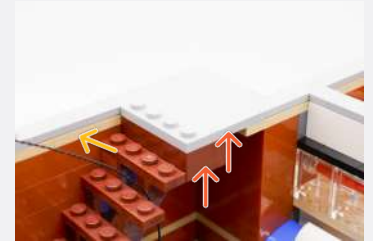
📌 NOTE ICON



Plate 1x6 - Any Colour



26b



Legend

→ DISCONNECT

→ CONNECT / RECONNECT

↻ TURN / FLIP

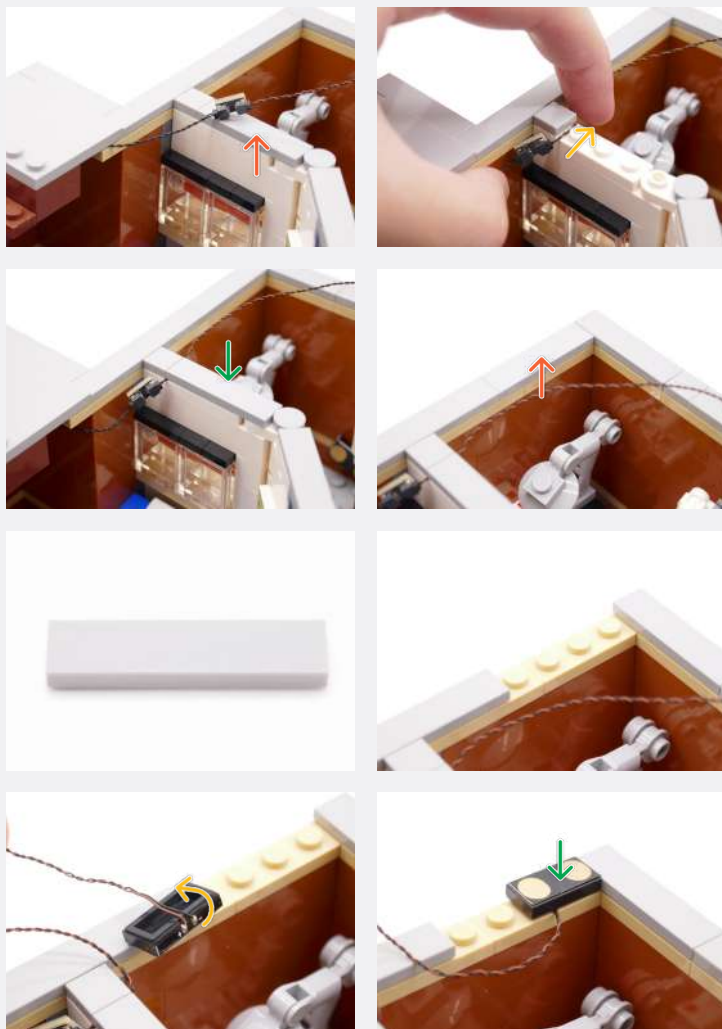
→ DIRECTIONAL

↻ TWIST / BRAID

✳ POWER ON TEST

📝 NOTE ICON

✎ If you experience any issues with the lights not working and suspect an issue with a component, please try a different port on the expansion board to verify where the fault lies (with the light or expansion board). To correct any issues with expansion board ports, please view the section addressing expansion board issues in our troubleshooting section.



27b

✎ Ensure the Wireless Power Connector from each floor is aligned and touching

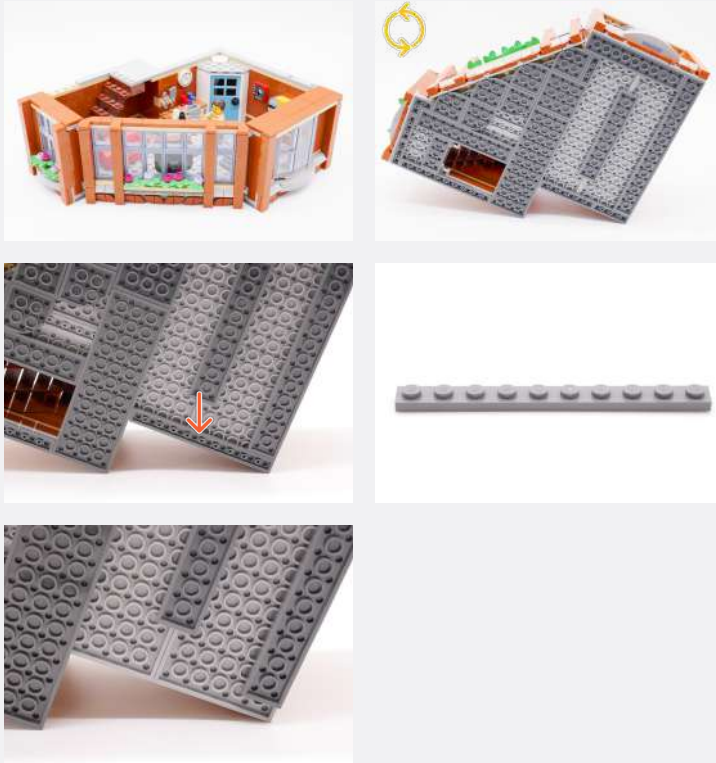
If you are having trouble, please refer to page 78



Legend

→ DISCONNECT → CONNECT / RECONNECT ↺ TURN / FLIP → DIRECTIONAL ↻ TWIST / BRAID ✨ POWER ON TEST ✎ NOTE ICON

28b



29b

Plate 1x6 (Any Colour)



White Strip Light



x2

15cm Connecting Cable



Legend

→ DISCONNECT

→ CONNECT / RECONNECT

↻ TURN / FLIP

→ DIRECTIONAL

↻ TWIST / BRAID

☀ POWER ON TEST

📝 NOTE ICON



30b



Legend

 DISCONNECT
  CONNECT / RECONNECT
  TURN / FLIP
  DIRECTIONAL
  TWIST / BRAID
  POWER ON TEST
  NOTE ICON

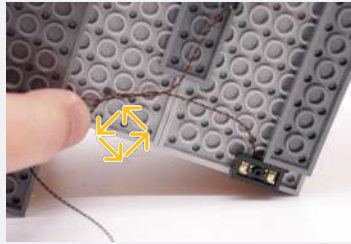
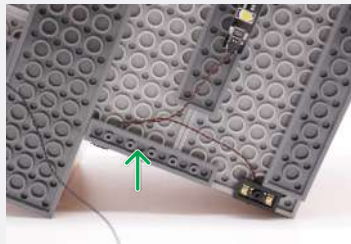
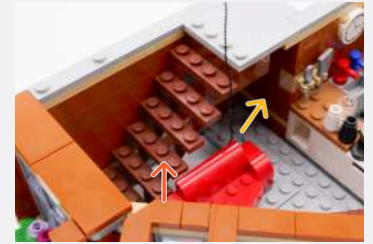


Plate 1x6 - Any Colour



31b



Legend

→ DISCONNECT

→ CONNECT / RECONNECT

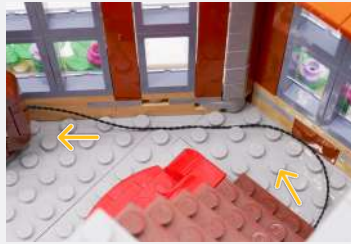
↻ TURN / FLIP

→ DIRECTIONAL

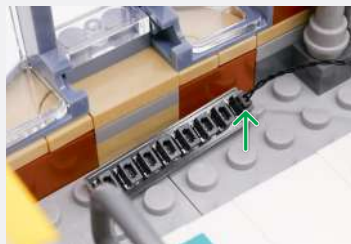
↻ TWIST / BRAID

⚡ POWER ON TEST

📝 NOTE ICON



8-Port Expansion Board



32b



Legend

→ DISCONNECT

→ CONNECT / RECONNECT

↻ TURN / FLIP

→ DIRECTIONAL

↻ TWIST / BRAID

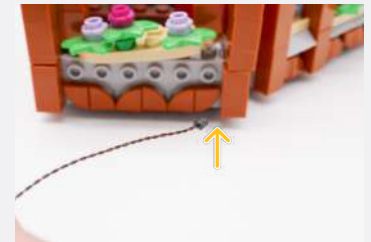
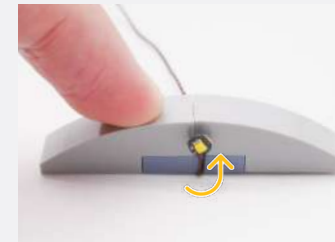
✱ POWER ON TEST

📝 NOTE ICON



33b

White 30cm Bit Light



Legend

→ DISCONNECT

→ CONNECT / RECONNECT

↻ TURN / FLIP

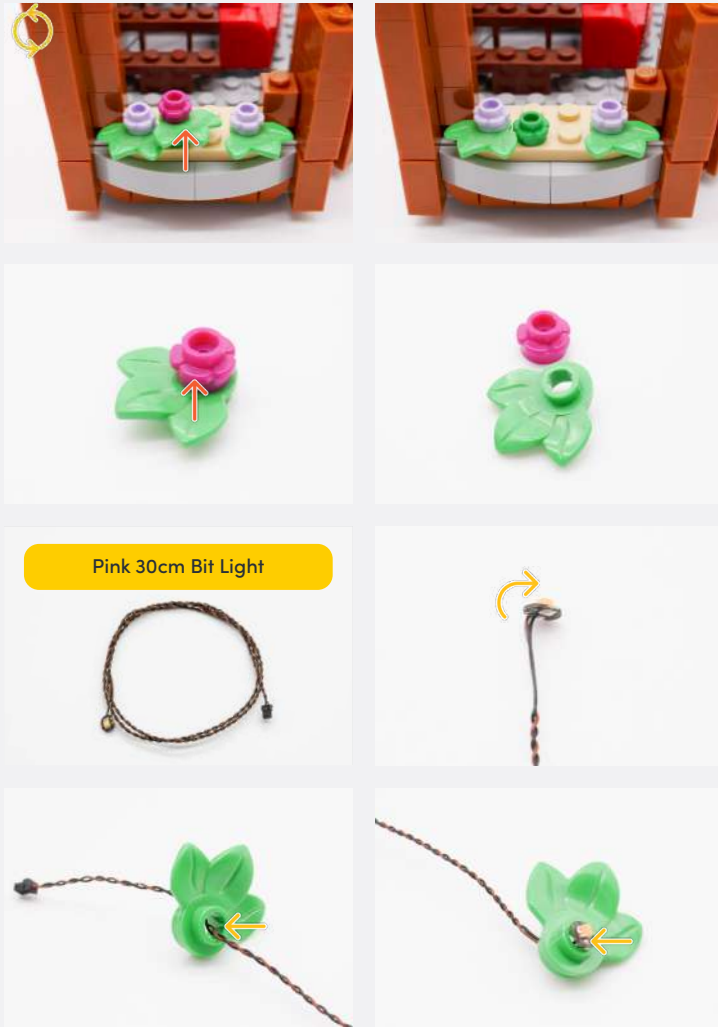
→ DIRECTIONAL

↻ TWIST / BRAID

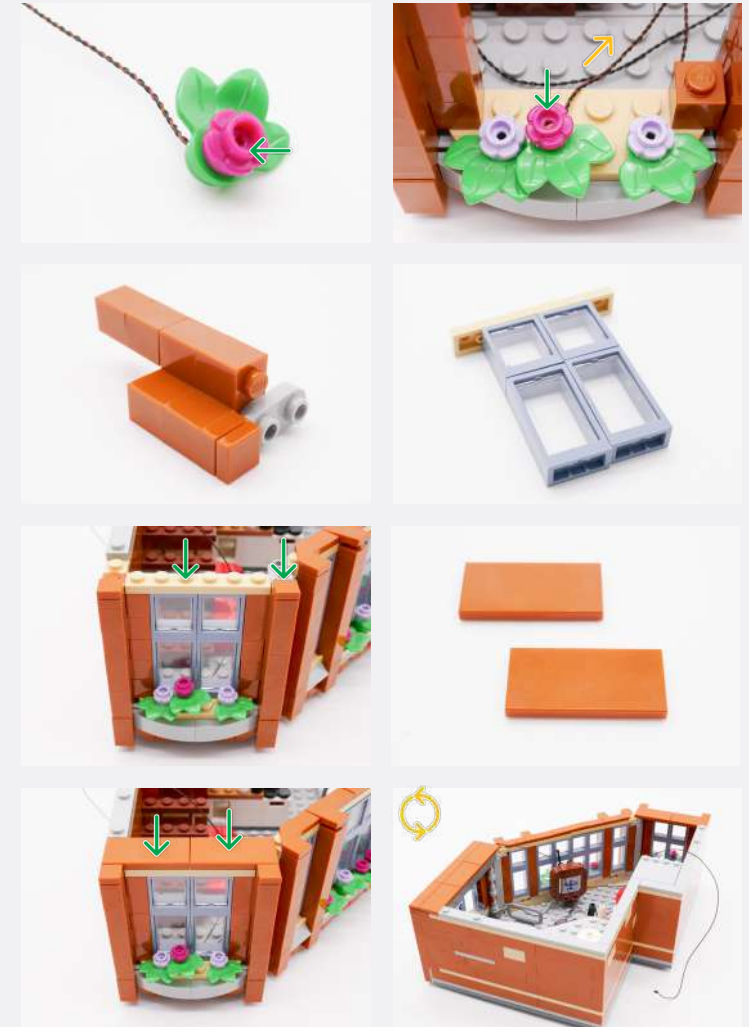
✱ POWER ON TEST

📝 NOTE ICON

34b



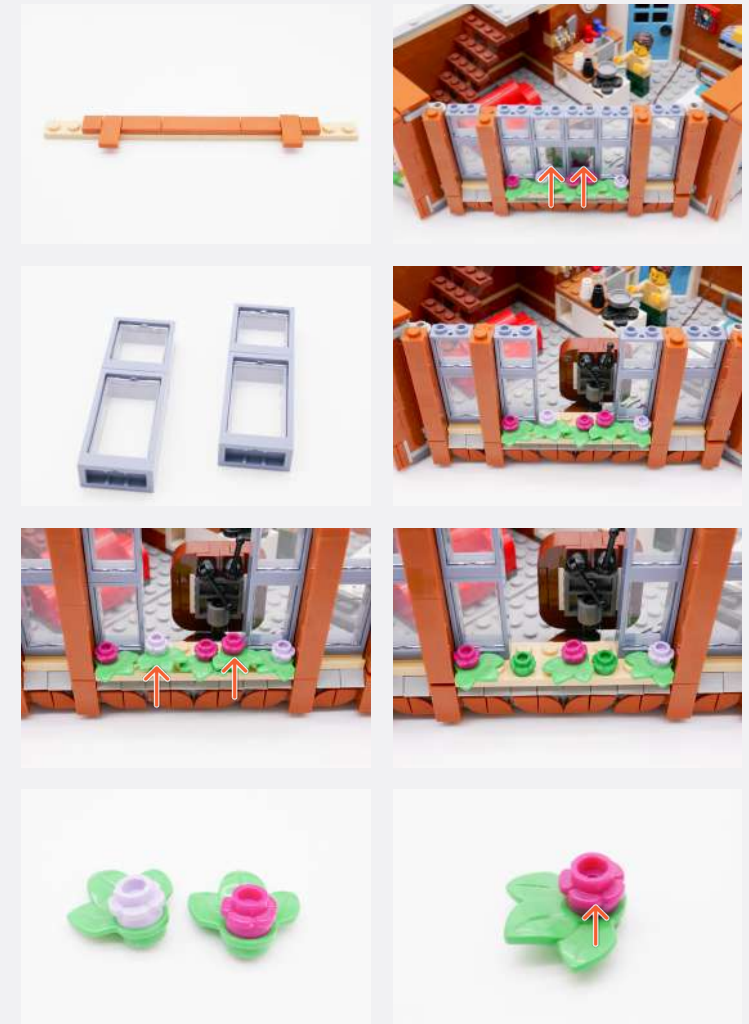
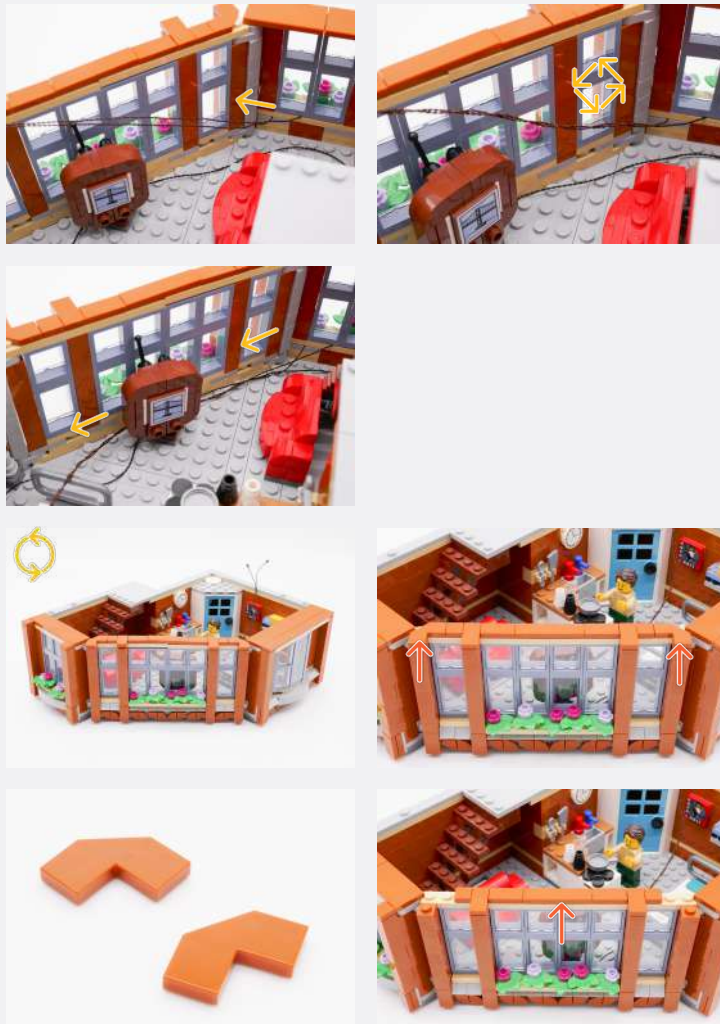
Pink 30cm Bit Light



Legend

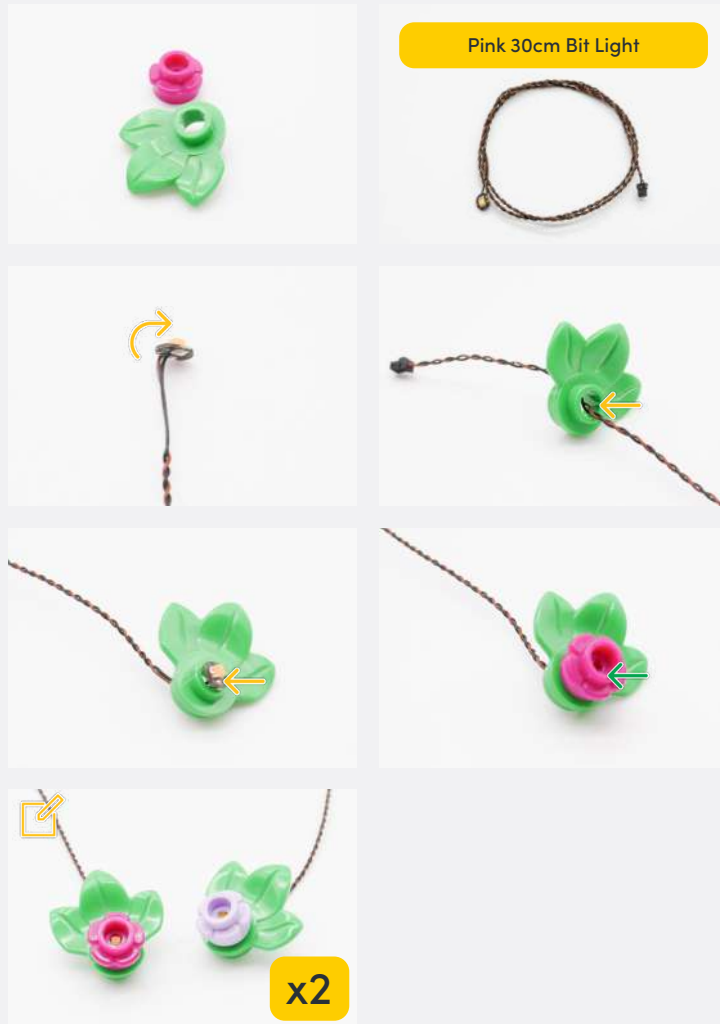
→ DISCONNECT → CONNECT / RECONNECT ↺ TURN / FLIP → DIRECTIONAL ↻ TWIST / BRAID ✨ POWER ON TEST 📝 NOTE ICON

35b

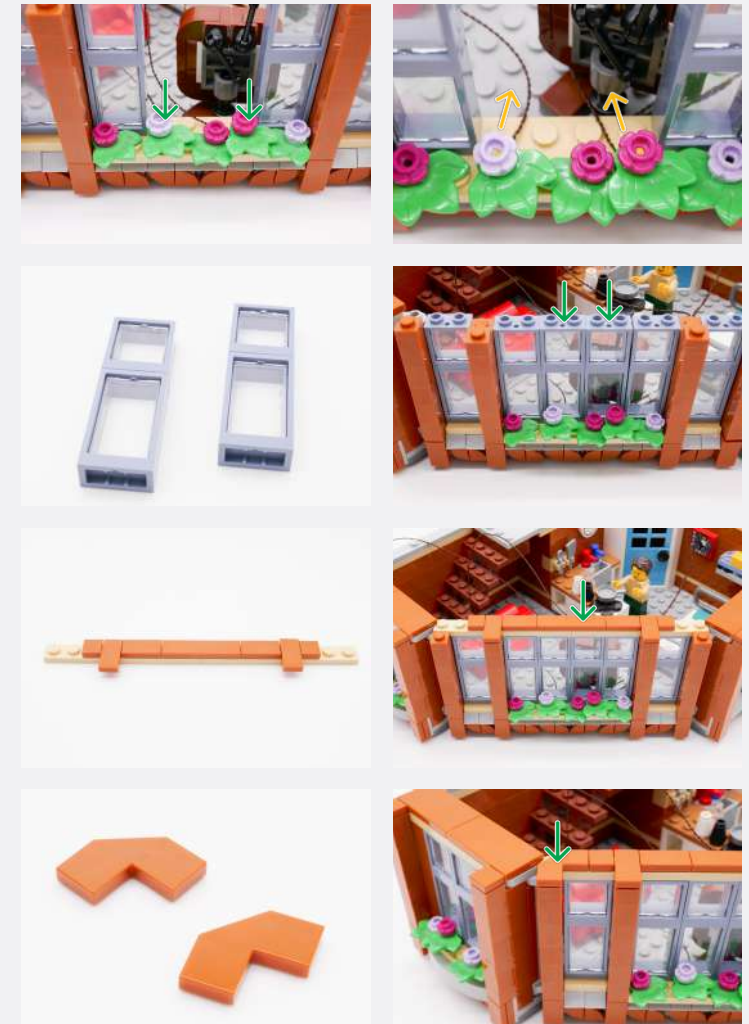


Legend

→ DISCONNECT → CONNECT / RECONNECT ↺ TURN / FLIP → DIRECTIONAL ↻ TWIST / BRAID ✨ POWER ON TEST 📝 NOTE ICON



36b



Legend

DISCONNECT
 CONNECT / RECONNECT
 TURN / FLIP
 DIRECTIONAL
 TWIST / BRAID
 POWER ON TEST
 NOTE ICON

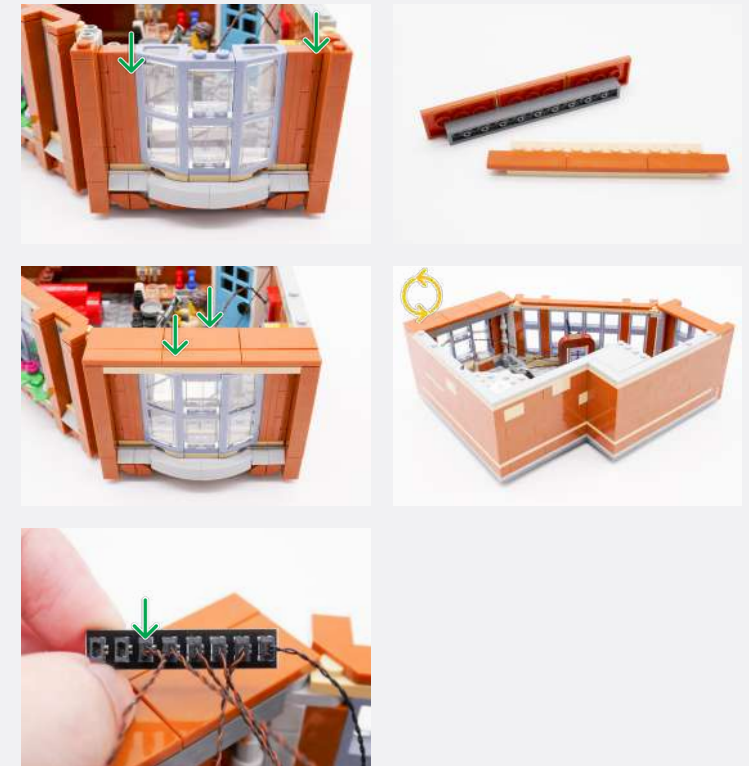
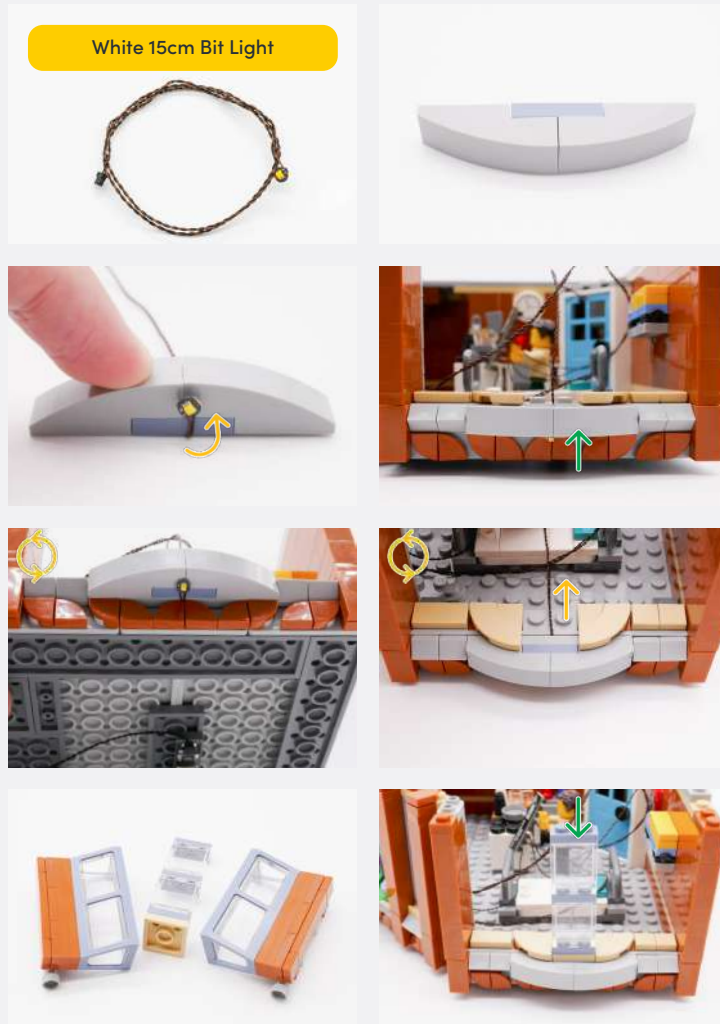


37b



Legend

 DISCONNECT
  CONNECT / RECONNECT
  TURN / FLIP
  DIRECTIONAL
  TWIST / BRAID
  POWER ON TEST
  NOTE ICON



Legend

→ DISCONNECT

→ CONNECT / RECONNECT

↻ TURN / FLIP

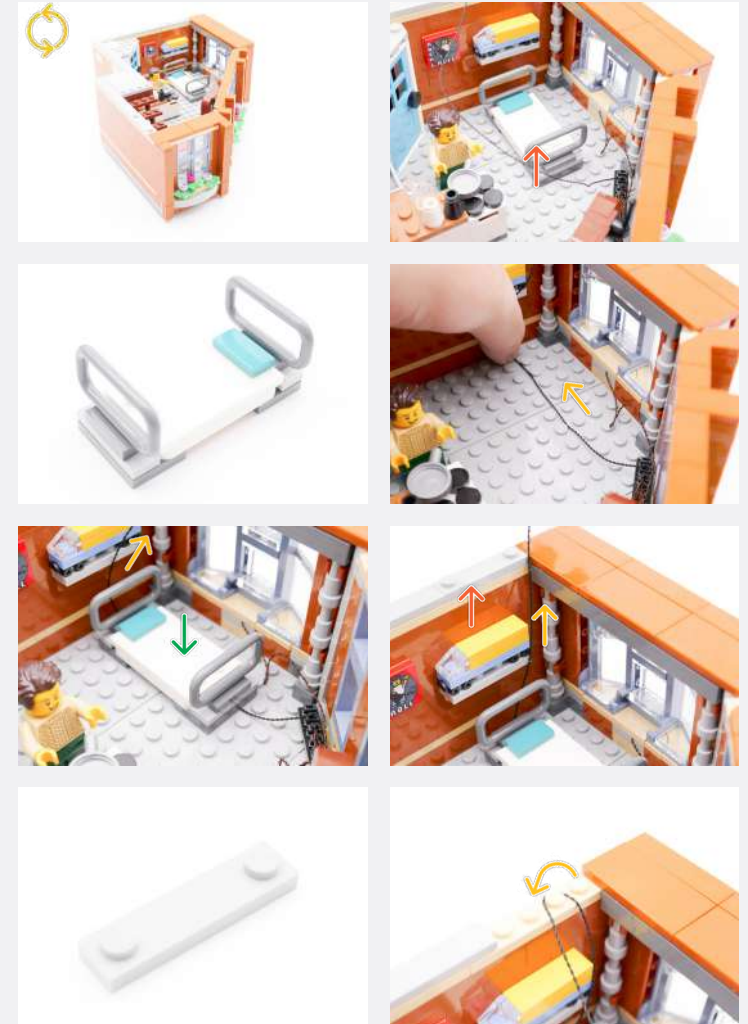
→ DIRECTIONAL

↻ TWIST / BRAID

⚡ POWER ON TEST

📝 NOTE ICON

38b



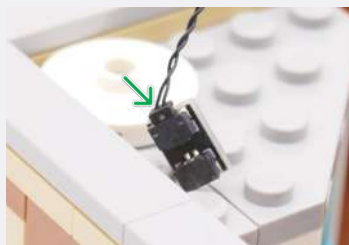
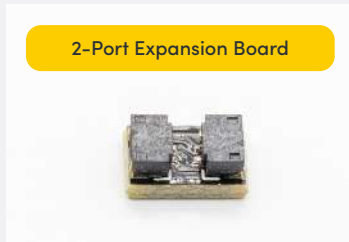
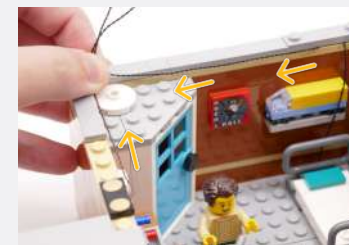
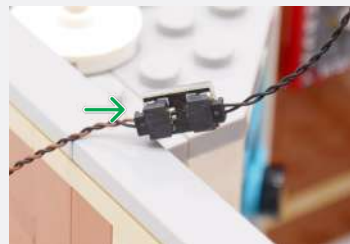
Legend

 DISCONNECT
  CONNECT / RECONNECT
  TURN / FLIP
  DIRECTIONAL
  TWIST / BRAID
  POWER ON TEST
  NOTE ICON

39b



2-Port Expansion Board


Wireless Power Connector
(Tile Side)


Legend

→ DISCONNECT


CONNECT /
RECONNECT


TURN / FLIP



DIRECTIONAL



TWIST / BRAID



POWER ON TEST



NOTE ICON

✏ If you experience any issues with the lights not working and suspect an issue with a component, please try a different port on the expansion board to verify where the fault lies (with the light or expansion board). To correct any issues with expansion board ports, please view the section addressing expansion board issues in our troubleshooting section.

✏ Ensure the Wireless Power Connector from each floor is aligned and touching

If you are having trouble, please refer to page 78

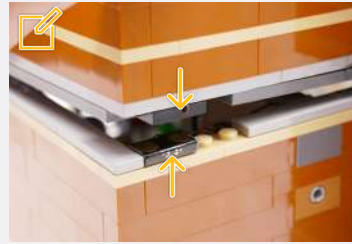


Plate 1x6 (Any Colour)



White Strip Light



x2

15cm Connecting Cable



30cm Connecting Cable



Legend

→ DISCONNECT

→ CONNECT / RECONNECT

↻ TURN / FLIP

→ DIRECTIONAL

↻ TWIST / BRAID

☀ POWER ON TEST

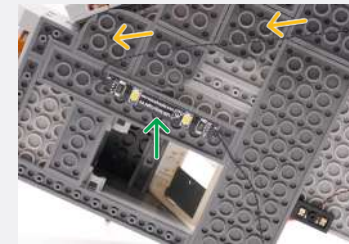
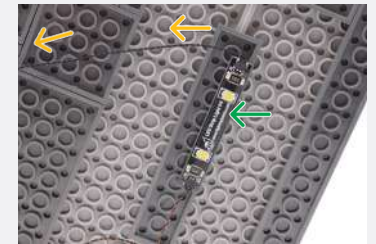
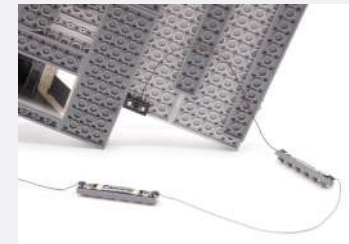
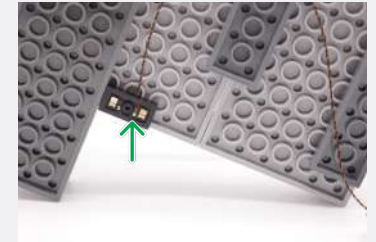
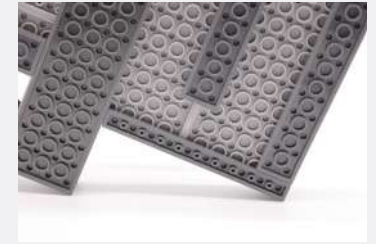
✏ NOTE ICON



Wireless Power Connector
(Plate Side)



41b



Legend

→ DISCONNECT

→ CONNECT / RECONNECT

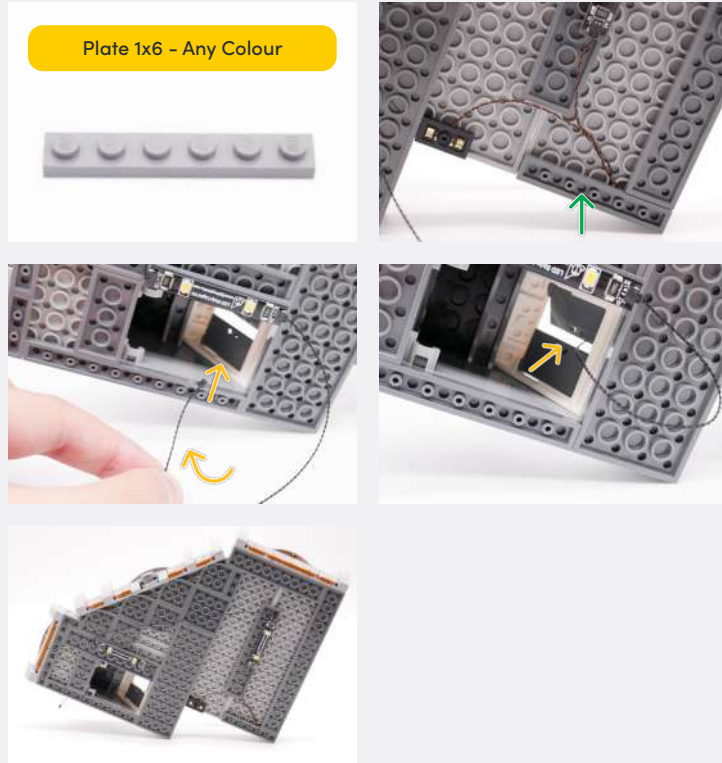
↻ TURN / FLIP

→ DIRECTIONAL

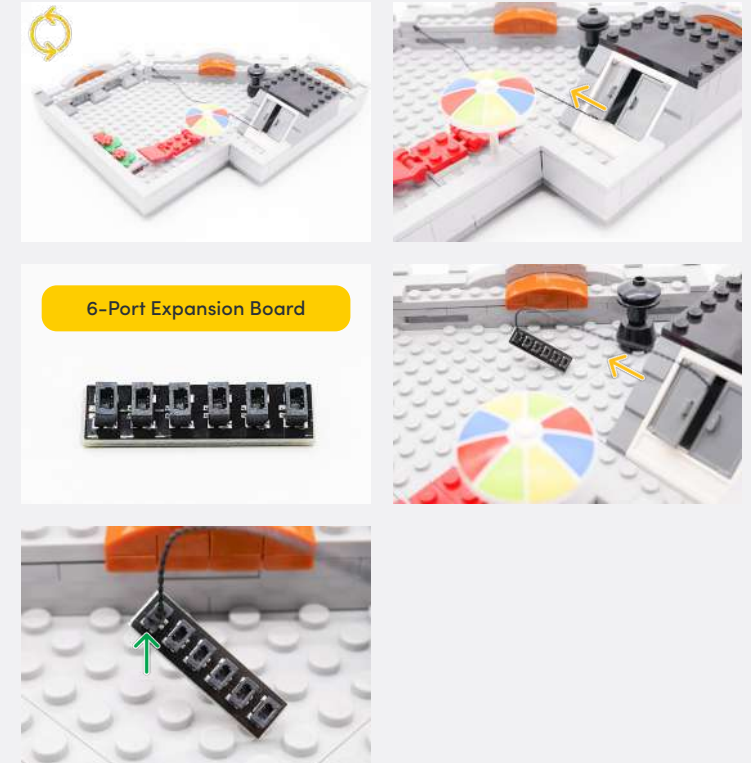
↻ TWIST / BRAID

✱ POWER ON TEST

📝 NOTE ICON



42b



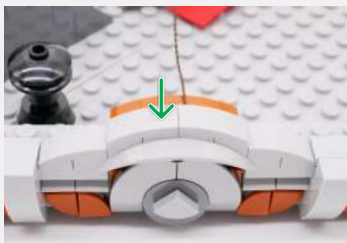
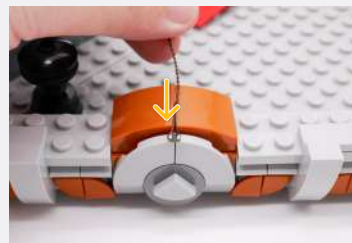
Legend

 DISCONNECT
  CONNECT / RECONNECT
  TURN / FLIP
  DIRECTIONAL
  TWIST / BRAID
  POWER ON TEST
  NOTE ICON

43b



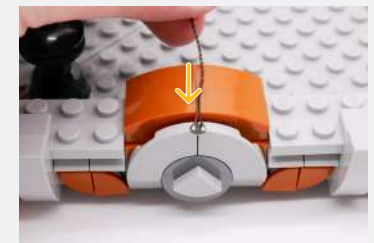
White 15cm Bit Light



44b

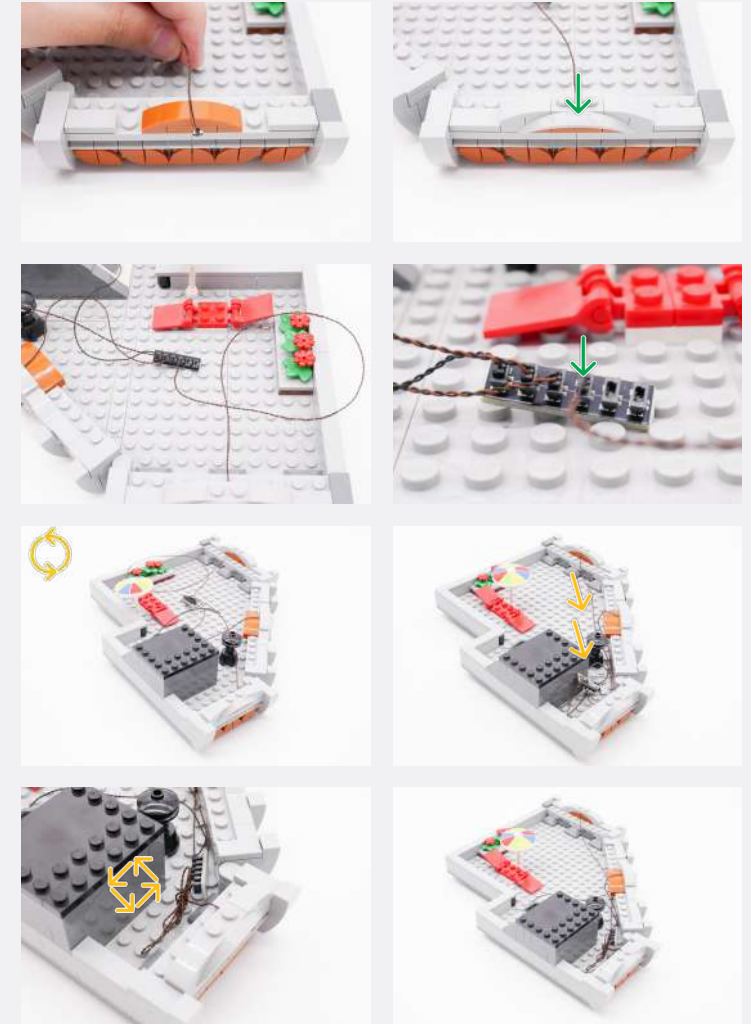
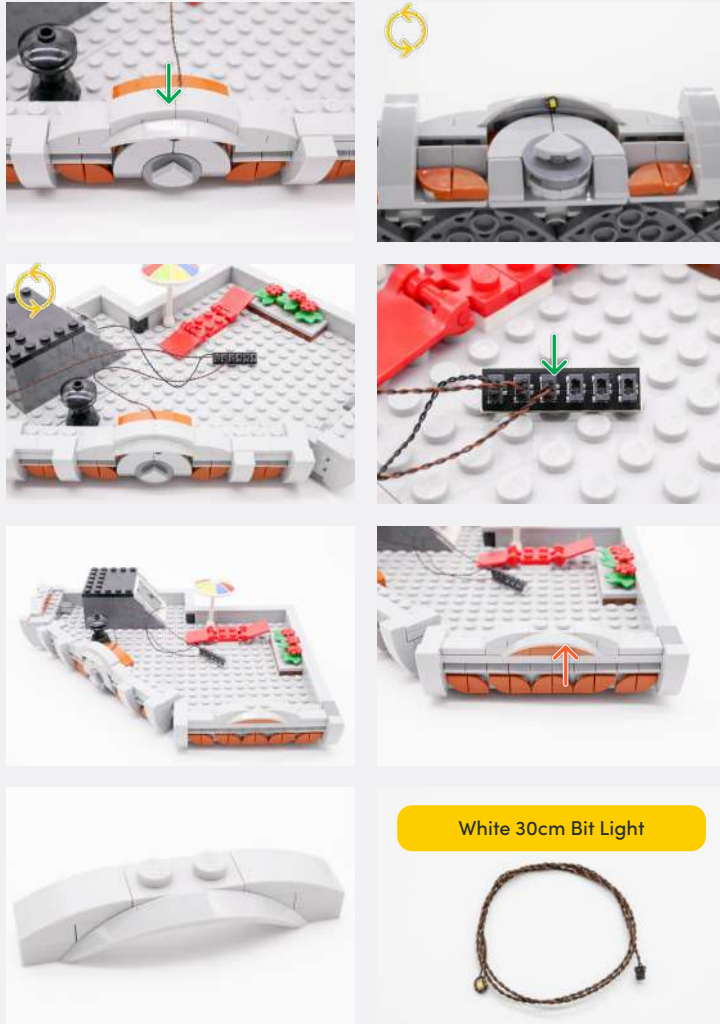


White 15cm Bit Light



Legend

DISCONNECT
 CONNECT / RECONNECT
 TURN / FLIP
 DIRECTIONAL
 TWIST / BRAID
 POWER ON TEST
 NOTE ICON



Legend

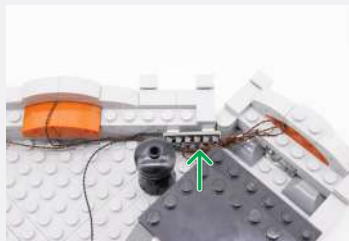
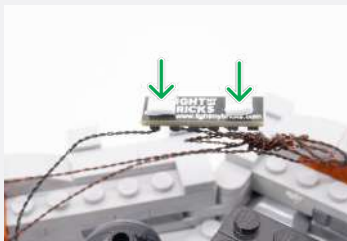
 DISCONNECT
  CONNECT / RECONNECT
  TURN / FLIP
  DIRECTIONAL
  TWIST / BRAID
  POWER ON TEST
  NOTE ICON

If you experience any issues with the lights not working and suspect an issue with a component, please try a different port on the expansion board to verify where the fault lies (with the light or expansion board). To correct any issues with expansion board ports, please view the section addressing expansion board issues in our troubleshooting section.

46b



2x Adhesive Squares



Ensure the Wireless Power Connector from each floor is aligned and touching

If you are having trouble, please refer to page 78

Legend

DISCONNECT

CONNECT / RECONNECT

TURN / FLIP

DIRECTIONAL

TWIST / BRAID

POWER ON TEST

NOTE ICON

FINAL PRODUCT

This finally completes installation of the Light My Bricks
LEGO Corner Garage 10264 Light Kit.





TROUBLESHOOTING

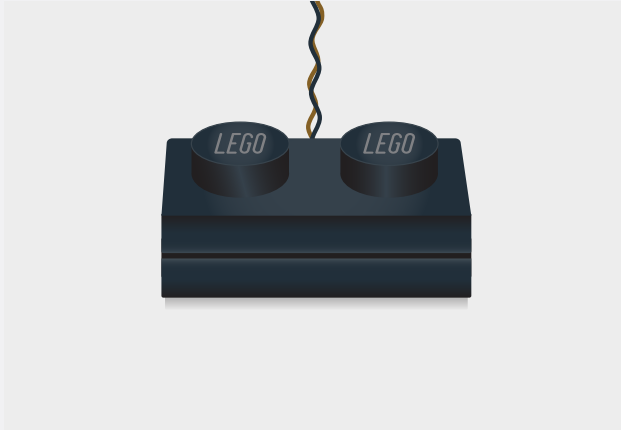
Light My Bricks lighting kits contain individual components that are very small and can be easily damaged if not handled correctly.

To prevent unnecessary damage to components, we highly recommend that the User Guide section, **“Important things to note”** is read carefully. Follow the handling procedures in the User Guide to help prevent faults and damages to your Light My Bricks components.

If you are experiencing issues with your Light My Bricks set, watch our troubleshooting video [here](#) or read on for a list of common causes to help you troubleshoot.

Wireless Power Connectors Install Tip

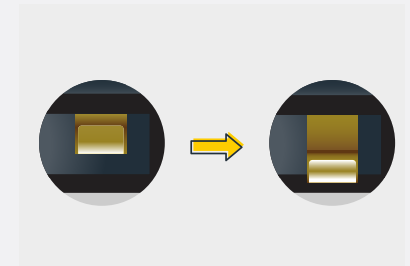
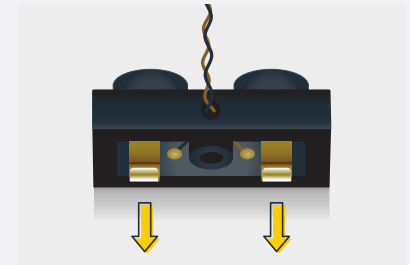
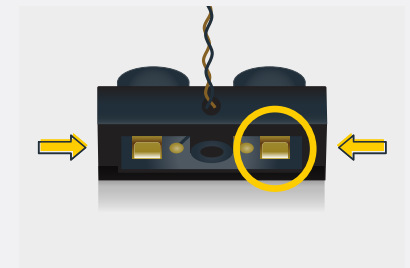
If you're having connectivity / contact issues with the Wireless Power Connectors, try the following tip to help resolve the issue.



Pull the terminal contacts further out.

Use a pair of tweezers to gently pull out both terminal contacts from the plate.

This will ensure that both plate and tile connectors can easily make contact.



Troubleshooting

Firstly, ensure that the batteries have power using a battery charge gauge.

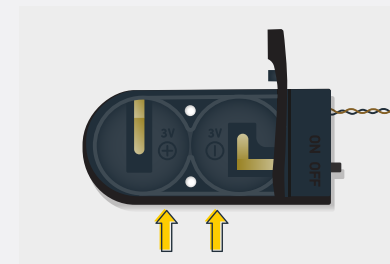
If the batteries have no power, replace the batteries.

If the batteries still have power, check to see if the batteries have been inserted correctly into the battery pack.

Check For CR2032 Batteries Using The Flat Battery Pack

Inside the battery pack is a symbol indicating which side the (round) CR2032 battery should be inserted. Check that the “+” side of the battery pack has the battery with the “+” symbol facing downwards.

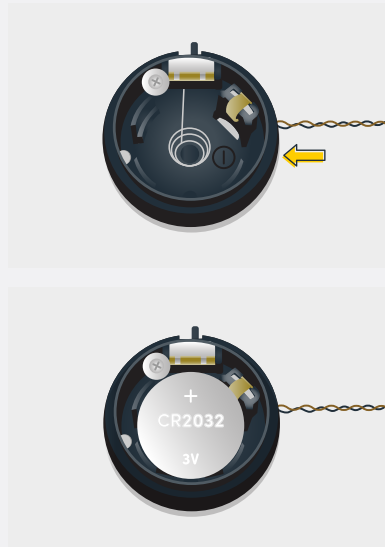
On the opposite side, the “-” side of the battery pack should have the battery flipped upside down, that is the “+” symbol facing upwards.



Troubleshooting

Check For Cr2032 Batteries Using The Round Battery Pack

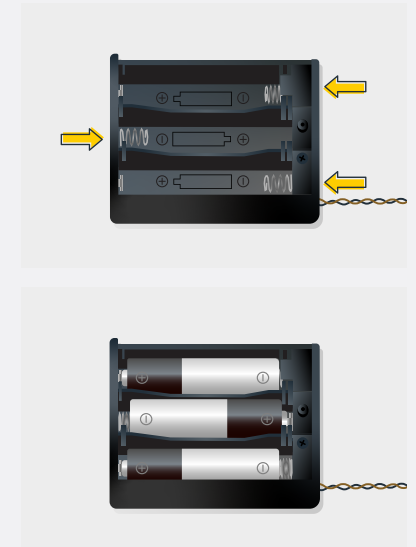
Inside the battery pack is a symbol indicating which side the (round) CR2032 battery should be inserted. In this case, for the stacked battery pack, ensure that BOTH batteries have the “+” symbol facing upwards.



Check for AA batteries using the AA battery pack

Inside the battery pack are symbols indicating which direction the AA battery should be inserted. The flat side of the battery should be paired with the spring side of the battery pack.

If the batteries have been installed correctly and your kit still isn't operating correctly, the next step is to check the wiring.



Troubleshooting

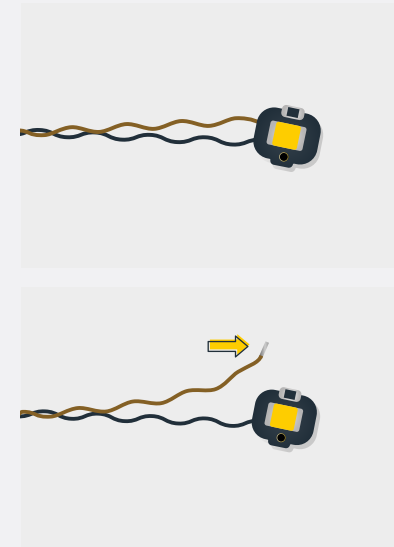
Check Your Wires

In order for Light My Bricks components to fit in between and underneath LEGO® bricks, the components need to be very small. Due to this nature, Light My Bricks components can be easily damaged when not handled correctly.

Be careful when removing unpacked components out of the packaging and ensure not to forcibly pull at the wires as this can damage the soldering that attach the wires to the LEDs.

If the wiring is detached from the LED itself, the light will not operate.

When connecting lights to your LEGO set, check that there are no pinched wires underneath or in between bricks and plates. When the wires are pinched and the exposed wires are touching each other, this can cause a crosswire and the lights to not function correctly.



Troubleshooting

Check Your Expansion Board Ports/ Strip Light Ports / Effects Board Ports

It is important to note that connectors can only be inserted to the expansion board, strip light, or effects board ports in one direction.

Forcibly inserting connectors in the incorrect direction will result in damaging the pins inside each of the ports on your component board.

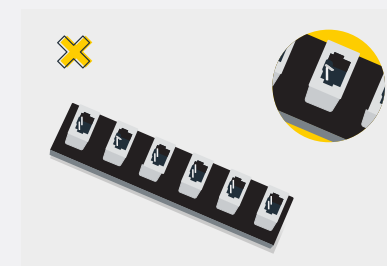
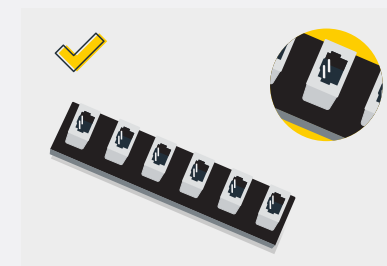
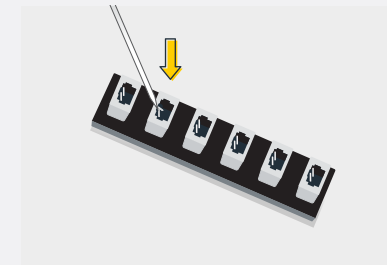
Not only will a light connected to the damaged port not work, but if the pins inside the port are bent to a point they are touching each other, this can result in all other lights in the system to stop working. This is a short circuit.



A short circuit can also result in overheating of the board, cable or batteries. If you suspect a short circuit, **DISCONNECT POWER IMMEDIATELY**. Batteries can fail, catch fire, or even explode if left connected to a short circuit for too long.

If you suspect you have a faulty component due to a bent pin, try the following steps:

If you look carefully inside each of the ports, each port contains 2 small pins that should be straight. You will be able to identify a faulty port if it has any bent pins.





CONTACT US

If you have an enquiry regarding the online shop, our products or a general enquiry please refer to our Frequently Asked Questions webpage here. Alternatively, you can contact our Customer Services team by visiting our online support portal here.

support.lightmybricks.com

We thank you for purchasing this product and hope you enjoy!



lightmybricks.com