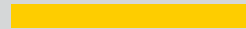




**LIGHT^{MY}
BRICKS**



**LEGO® ASSEMBLY SQUARE
#10255 LIGHT KIT
INSTALLATION GUIDE**

Light My Bricks



LEGO® ASSEMBLY SQUARE #10255 LIGHT KIT INSTALLATION GUIDE

Hi There!

We're here to help you get started on the LEGO®
Assembly Square (10255) Light Kit.

This PDF details the instructions for the LED light kit only. If
you are wishing to purchase this product, please [click here](#)
to view the product page.

If you run into any issues, please refer to the troubleshoot-
ing section towards the end of this guide.

Have fun and enjoy!



PACKAGE CONTENTS:



2 x Lamp Posts with Bit Light installed
7 x White Bit Light 15cm
1 x White Bit Light 30 cm
1 x Blue Bit Light 30 cm
8 x White Strip Light



1x 8-port Expansion Board
2x 6-port Expansion Board



1 x Multi Effects Boards (3PFX)
8x Adhesive Squares



1x 5cm Connecting Cable
6x 15cm Connecting Cables
4x 30cm Connecting Cables



1 x USB Power Cable
(Power Source not Included)

ASSORTED BRICKS:



- 8 x Plate 1x6 (any colour)

ADDITIONAL COMPONENTS TO USE WIRELESS POWER CONNECTORS (SOLD SEPERATELY)



- 6x Wireless Power Connectors sets (available to purchase in a 2pk)
- 3x 2-Port Expansion Board (available to purchase in a 4pk)
- 1x 6-Port Expansion Board (available to purchase in a 2pk)
- 1x 30cm Connecting Cable (available to purchase in a 4pk)

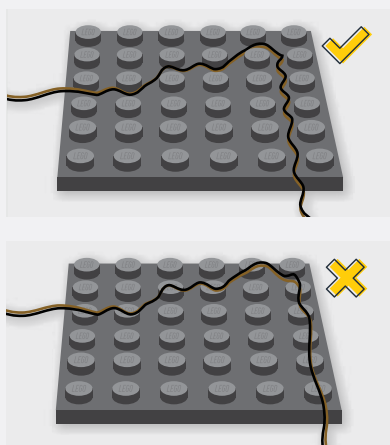
NOTE: If you choose to use the Wireless Power Connectors, we recommend purchasing the aforementioned components before beginning.

* Spares included

Contents

Before You Begin	5
Blueprint	8
Instructions	9
Final Product	65
Troubleshooting	66
Contact	71

Before You Begin



Laying cables in between and underneath bricks

Cables can fit in between and underneath LEGO® bricks, plates, and tiles providing they are laid correctly between the LEGO® studs. Do NOT forcefully join LEGO® together around cables; instead ensure they are laying comfortably in between each stud.

CAUTION: Forcing LEGO® to connect over a cable can result in damaging the cable and light.

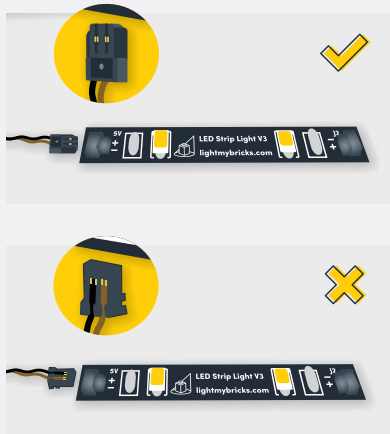


Connecting Cable Connectors To Expansion Boards

Take extra care when inserting connectors to ports of Expansion Boards. Connectors can be inserted only one way. With the expansion board facing up, look for the soldered “=” symbol on the left side of the port. The connector side with the wires exposed should be facing toward the soldered “=” symbol as you insert into the port. If a plug won’t fit easily into a port connector, do not force it.

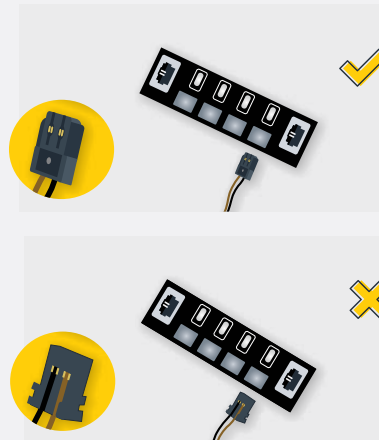
Incorrectly inserting the connector can result in bent pins inside the port or possible overheating of the expansion board when connected.

Before You Begin



Connecting Cable Connectors To Strip Lights

Take extra care when inserting connectors to ports on the Strip Lights. Connectors can be inserted only one way. With the Strip Light facing up, ensure the side of the connector with the wires exposed is facing down. If a plug won't fit easily into a port connector, don't force it. Doing so will damage the plug and the connector.



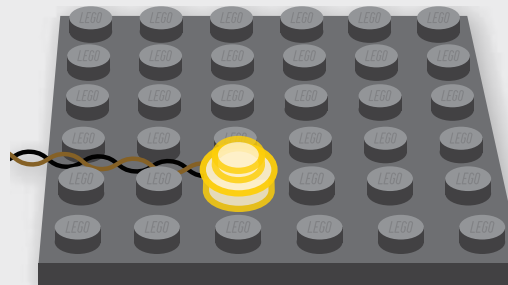
Connecting Micro Cable Connectors To Micro Expansion Board Ports

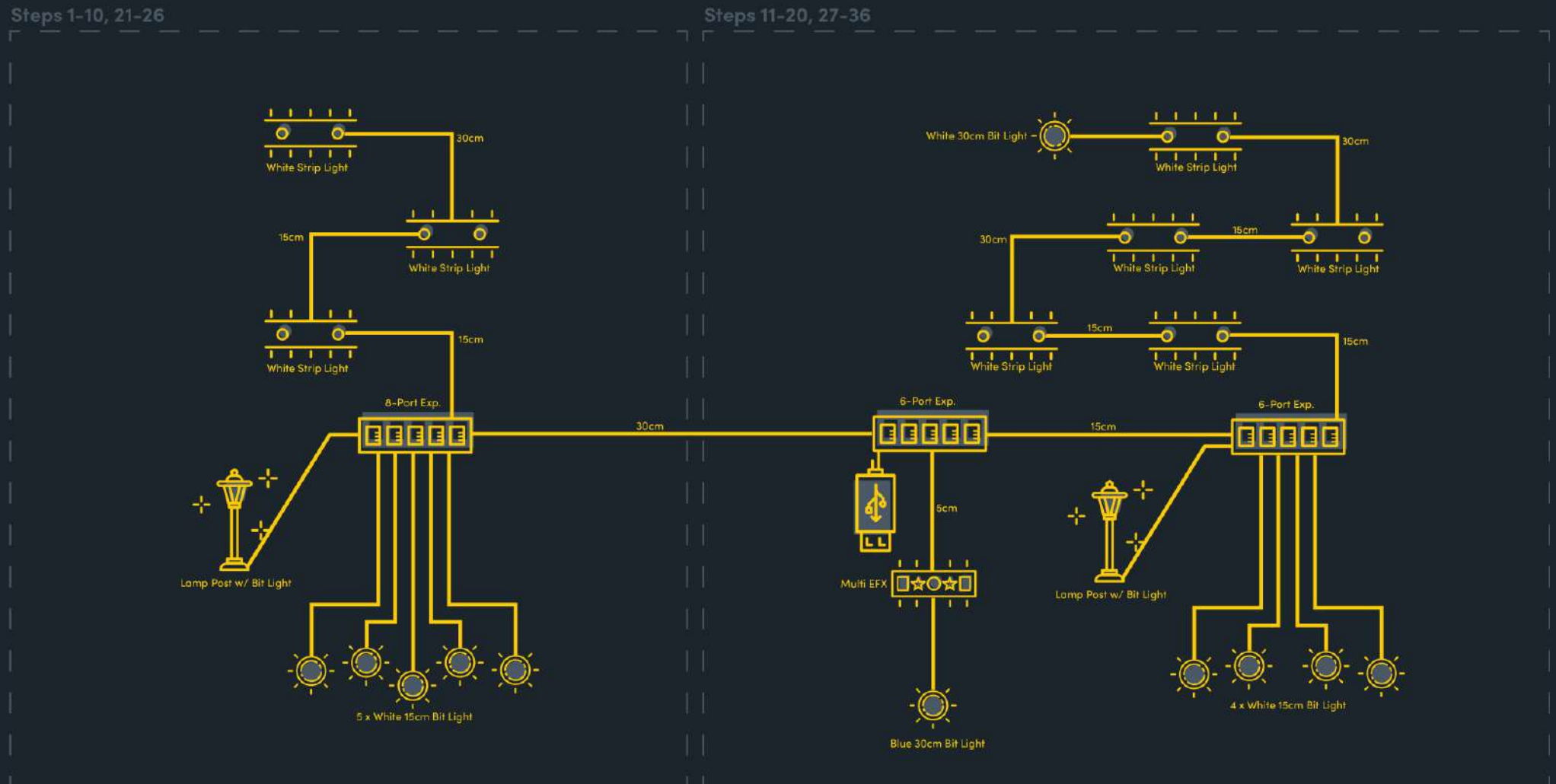
Take extra care when inserting the micro connectors to micro ports of Micro Expansion Boards. Connecting Micro Bit Lights to Micro Expansion Boards is similar to connecting lights and cables to Strip Lights. With the expansion board facing up, ensure the side of the connector with the wires exposed is facing down. If a plug won't fit easily into a port connector, do not force it. Use your fingernail to push the plastic part of the connector to the micro port.

Before You Begin

Installing Bit Lights Under Lego® Bricks And Plates

When installing Bit Lights under LEGO® pieces, ensure they are placed the correct way up (Yellow LED component exposed). You can either place them directly on top of LEGO® studs or in between.







INSTRUCTIONS

To ensure a smooth installation of your light kit, please read and follow each step carefully. If you run into any issues, please refer to the online troubleshooting guide.

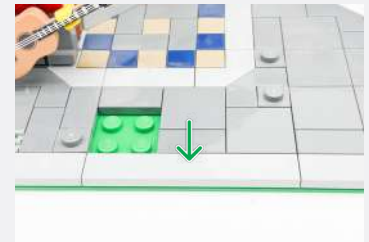
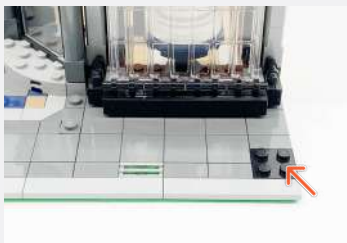
1



Legend

 DISCONNECT
  CONNECT / RECONNECT
  TURN / FLIP
  DIRECTIONAL
  TWIST / BRAID
  POWER ON TEST
  NOTE ICON

2



Legend

→ DISCONNECT

→ CONNECT / RECONNECT

↻ TURN / FLIP

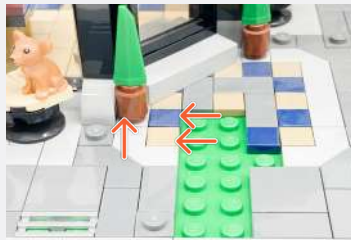
→ DIRECTIONAL

↻ TWIST / BRAID

✳ POWER ON TEST

📝 NOTE ICON

3



Legend

- DISCONNECT
- CONNECT / RECONNECT
- ↻ TURN / FLIP
- DIRECTIONAL
- ↻ TWIST / BRAID
- ⚡ POWER ON TEST
- 📝 NOTE ICON



4

Lamp Post w/ Bit Light



Legend

→ DISCONNECT

→ CONNECT / RECONNECT

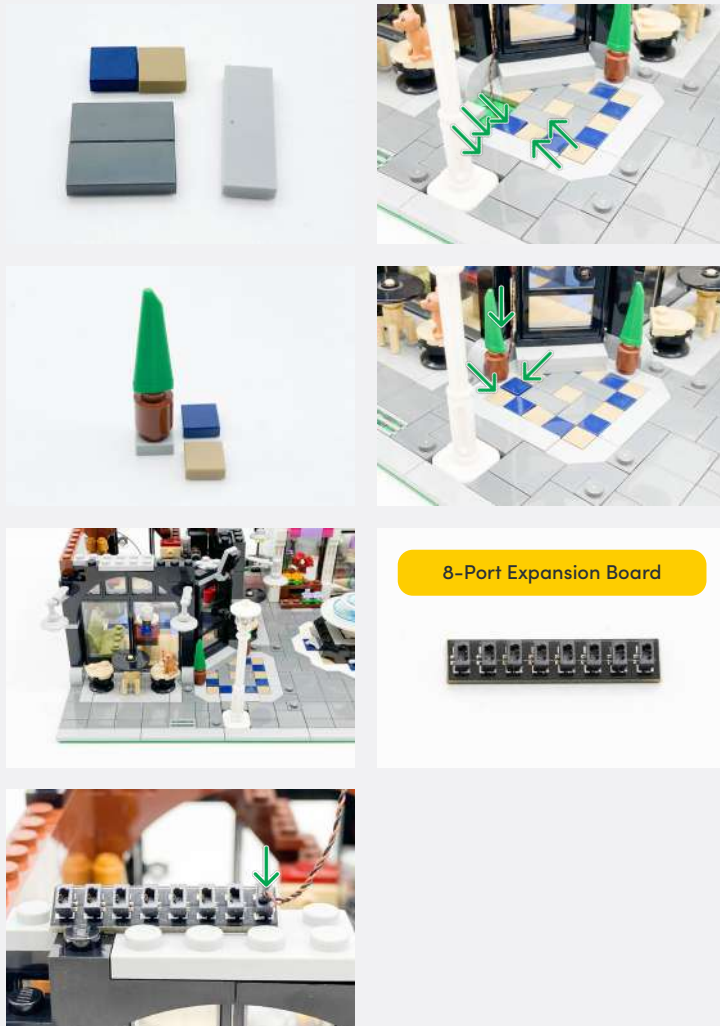
↻ TURN / FLIP

→ DIRECTIONAL

↻ TWIST / BRAID

✳ POWER ON TEST

📝 NOTE ICON

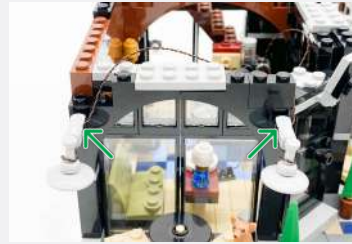


5

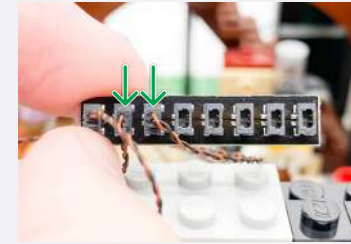


Legend

→ DISCONNECT → CONNECT / RECONNECT ↺ TURN / FLIP → DIRECTIONAL ↻ TWIST / BRAID ✨ POWER ON TEST 📝 NOTE ICON

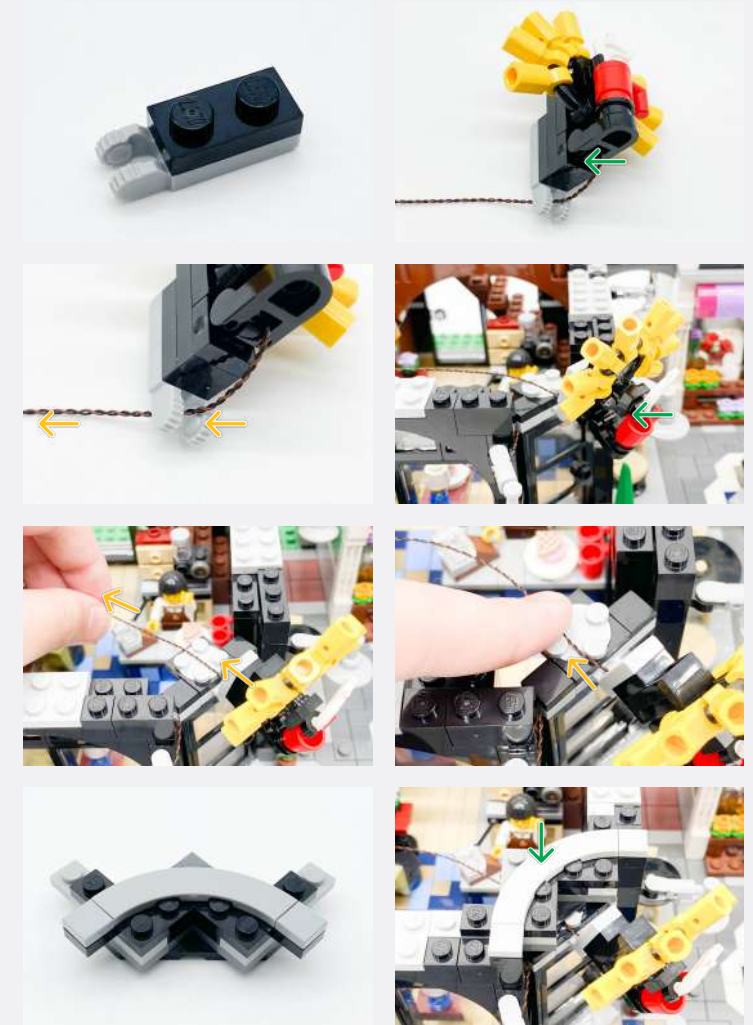


6



Legend

- DISCONNECT
- CONNECT / RECONNECT
- ↻ TURN / FLIP
- DIRECTIONAL
- ↻ TWIST / BRAID
- ✳ POWER ON TEST
- 📝 NOTE ICON



Legend

 DISCONNECT
  CONNECT / RECONNECT
  TURN / FLIP
  DIRECTIONAL
  TWIST / BRAID
  POWER ON TEST
  NOTE ICON

7



8



White 15cm Bit Light

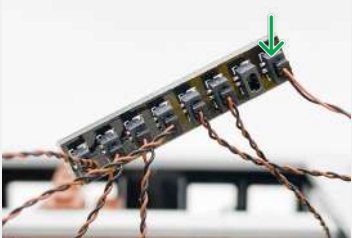
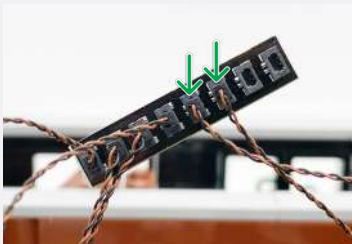
Legend

→ DISCONNECT → CONNECT / RECONNECT ↺ TURN / FLIP → DIRECTIONAL ↻ TWIST / BRAID ✨ POWER ON TEST 📝 NOTE ICON

🔧 If you experience any issues with the lights not working and suspect an issue with a component, please try a different port on the expansion board to verify where the fault lies (with the light or expansion board). To correct any issues with expansion board ports, please view the section addressing expansion board issues in our troubleshooting section.



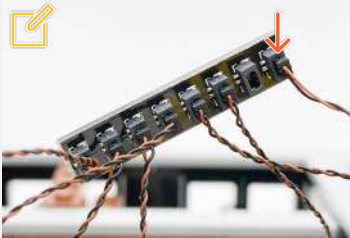
9



🔧 Connect to a 5V USB Power Bank, AA Battery Pack, or 5V USB Wall Adapter (each sold seperately).

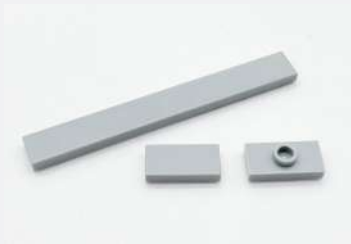


✂ Disconnect the USB Power Cable

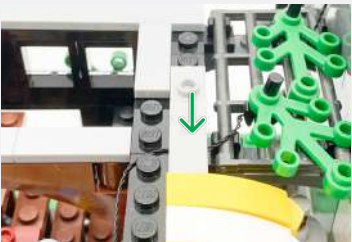
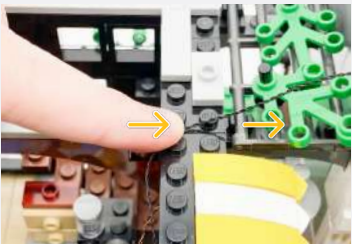
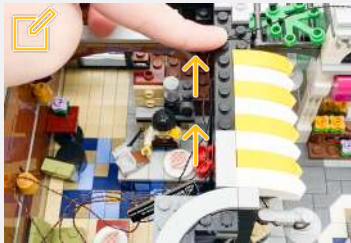


10

30cm Connecting Cable

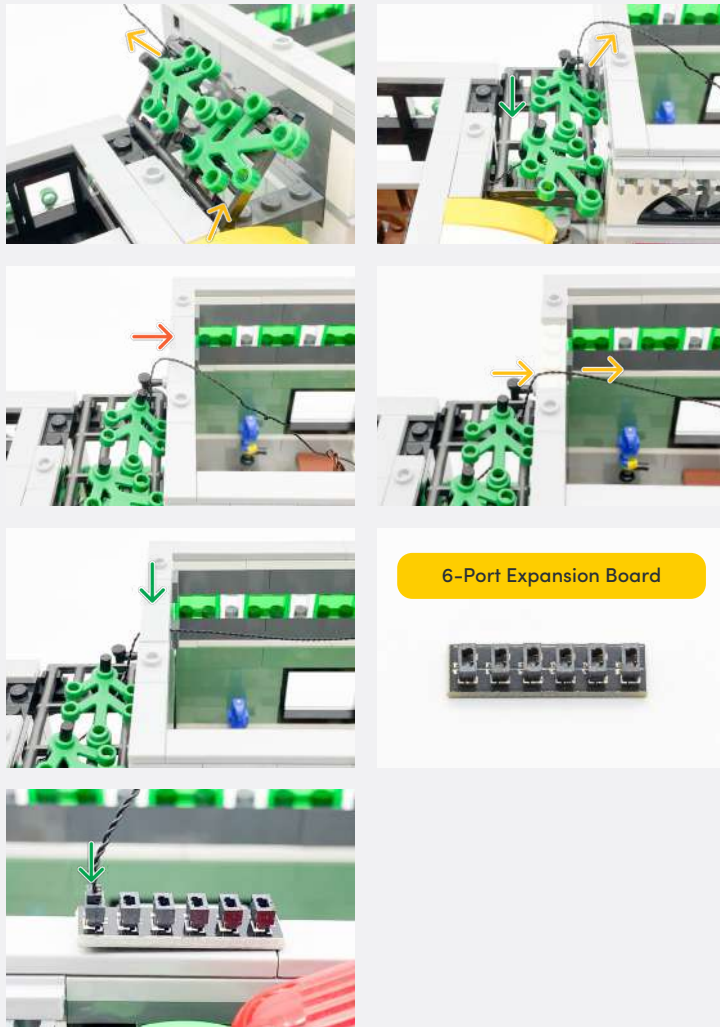


✂ Pull the 30cm Connecting Cable towards the back of the room ensuring to leave the Expansion Board positioned at the front entrance.

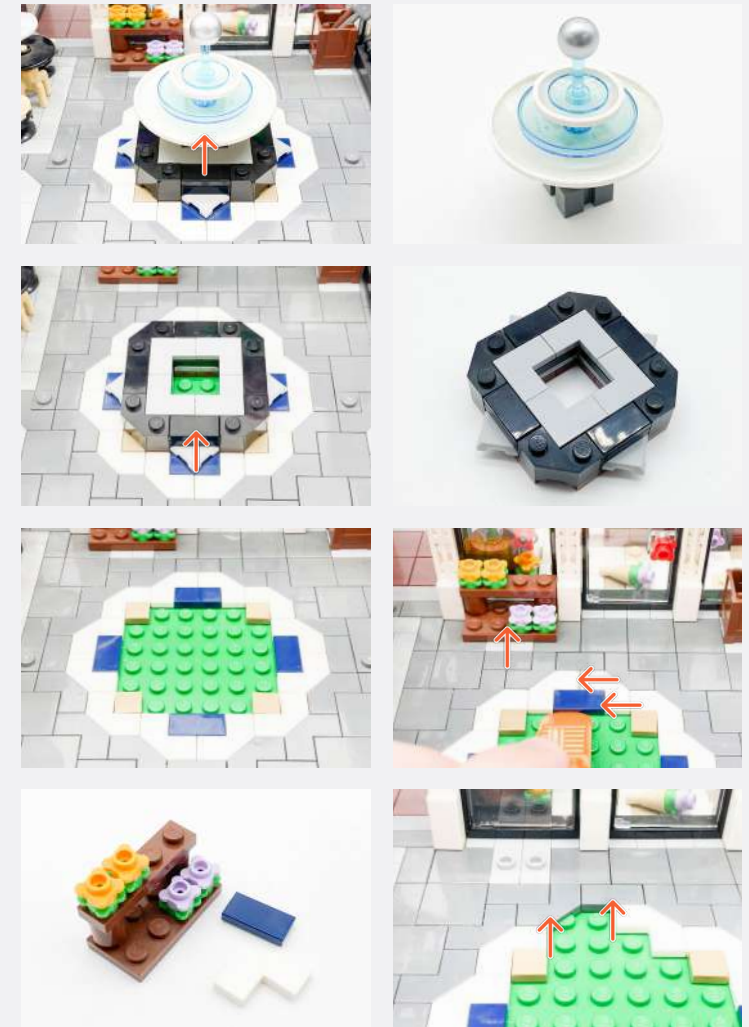


Legend

DISCONNECT
 CONNECT / RECONNECT
 TURN / FLIP
 DIRECTIONAL
 TWIST / BRAID
 POWER ON TEST
 NOTE ICON



11



Legend

 DISCONNECT
  CONNECT / RECONNECT
  TURN / FLIP
  DIRECTIONAL
  TWIST / BRAID
  POWER ON TEST
  NOTE ICON



12



Blue 30cm Bit Light

Legend

→ DISCONNECT → CONNECT / RECONNECT ↺ TURN / FLIP → DIRECTIONAL ↻ TWIST / BRAID ✨ POWER ON TEST 📝 NOTE ICON



13



Legend

DISCONNECT
 CONNECT / RECONNECT
 TURN / FLIP
 DIRECTIONAL
 TWIST / BRAID
 POWER ON TEST
 NOTE ICON



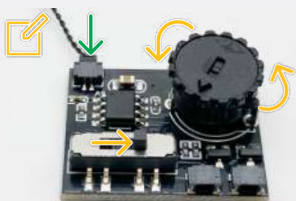
14

5cm Connecting Cable

Multi Effects Board

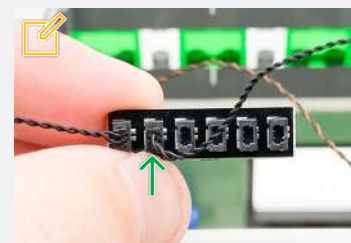
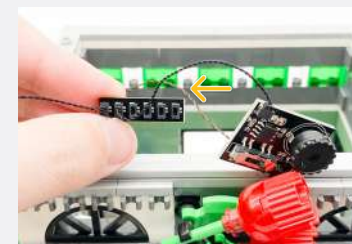


✍ The mode and speed can be adjusted with the switch and dial.



15

✍ Connect the other end of the 5cm Connecting Cable to the 6-Port Expansion Board.



2x Adhesive Squares



Legend

→ DISCONNECT → CONNECT / RECONNECT ↺ TURN / FLIP → DIRECTIONAL ↻ TWIST / BRAID ✨ POWER ON TEST ✍ NOTE ICON

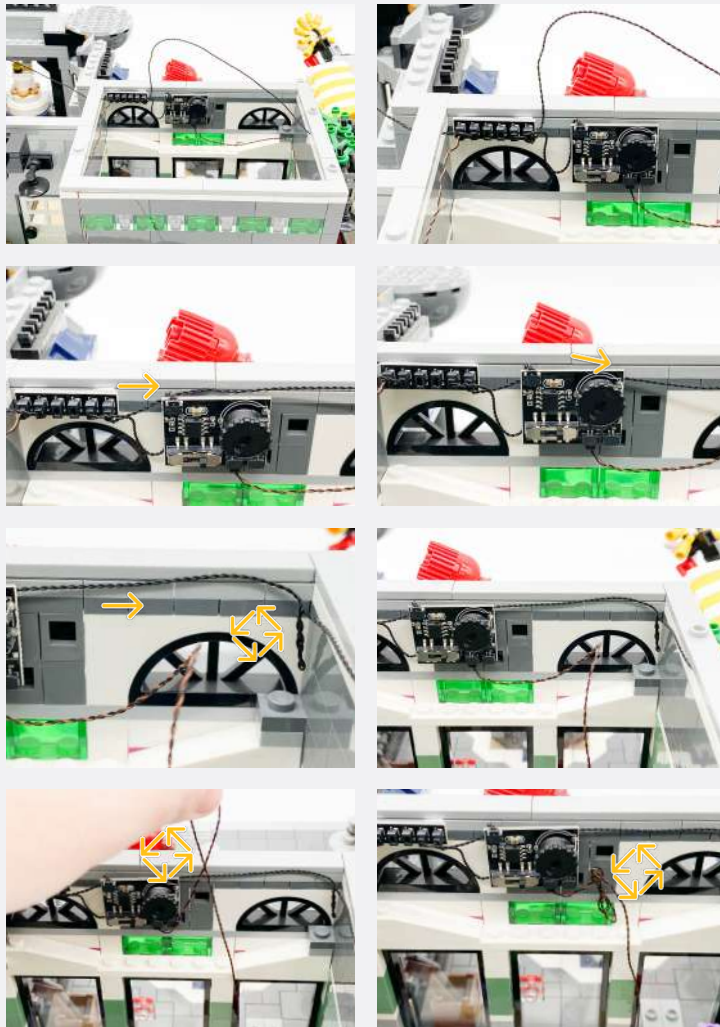


16



Legend

- DISCONNECT
- CONNECT / RECONNECT
- ↻ TURN / FLIP
- DIRECTIONAL
- ↻ TWIST / BRAID
- ✱ POWER ON TEST
- 📝 NOTE ICON



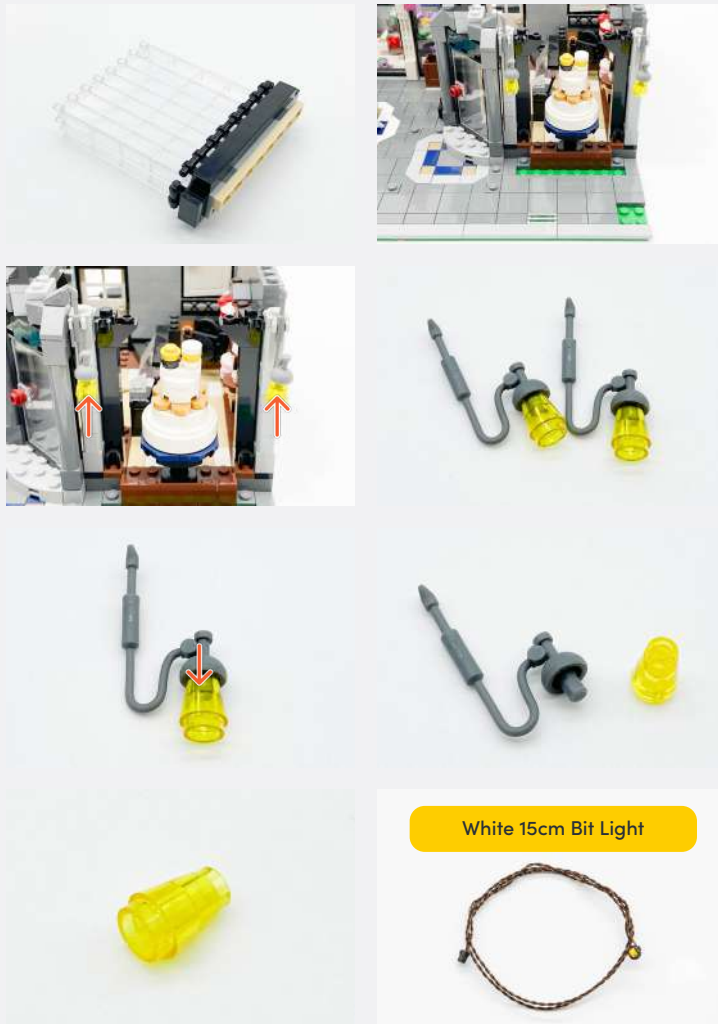
17



Legend

DISCONNECT
 CONNECT / RECONNECT
 TURN / FLIP
 DIRECTIONAL
 TWIST / BRAID
 POWER ON TEST
 NOTE ICON

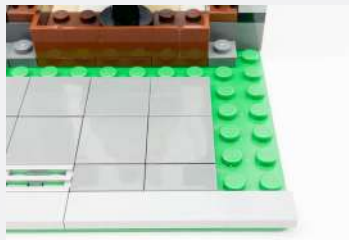
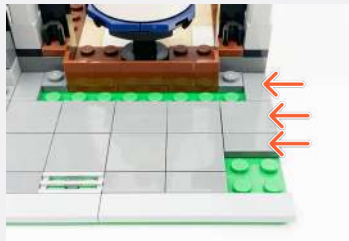
18



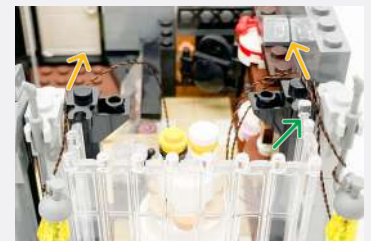
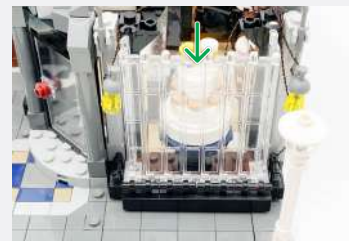
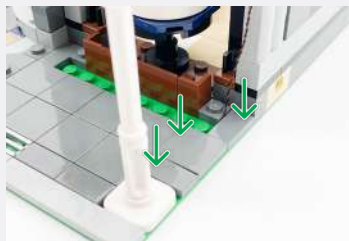
Legend

- DISCONNECT
- CONNECT / RECONNECT
- ↻ TURN / FLIP
- DIRECTIONAL
- ↻ TWIST / BRAID
- ⚡ POWER ON TEST
- 📝 NOTE ICON

19



Lamp Post w/ Bit Light

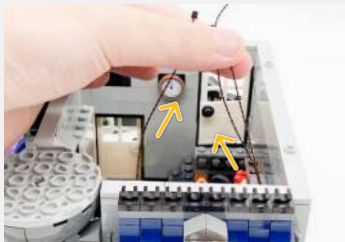


Legend

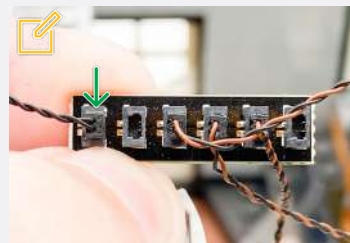
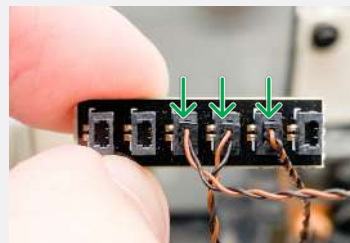
→ DISCONNECT → CONNECT / RECONNECT ↺ TURN / FLIP → DIRECTIONAL ↻ TWIST / BRAID ✨ POWER ON TEST 📝 NOTE ICON

20

✎ If you experience any issues with the lights not working and suspect an issue with a component, please try a different port on the expansion board to verify where the fault lies (with the light or expansion board). To correct any issues with expansion board ports, please view the section addressing expansion board issues in our troubleshooting section.



6-Port Expansion Board



✎ Connect the 15cm Connecting Cable from the Expansion Board from the building.



Please continue onto page 43 if you have purchased additional components separately to utilize Wireless Power Connectors.

If you have not, please continue onto the next page.

NOTE: If you choose to use the Wireless Power Connectors, we recommend purchasing the necessary components (listed on page 3) before continuing onto page 43).

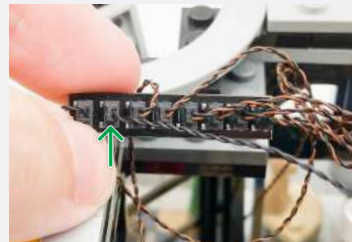
Legend

→ DISCONNECT → CONNECT / RECONNECT ↺ TURN / FLIP → DIRECTIONAL ↻ TWIST / BRAID ✨ POWER ON TEST ✎ NOTE ICON

21



15cm Connecting Cable



✍ Ensure to exclude the 15cm Connecting Cable from the twisting of cables



2x Adhesive Squares



22

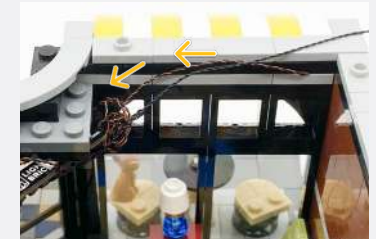


Plate 1x6 (Any Colour)



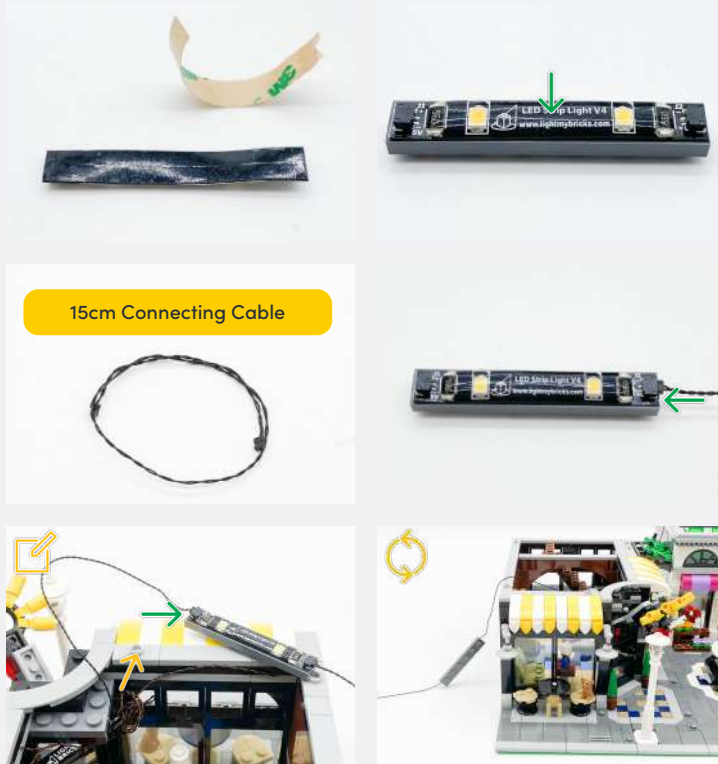
White Strip Light



Legend

- DISCONNECT
- CONNECT / RECONNECT
- ↻ TURN / FLIP
- DIRECTIONAL
- ↻ TWIST / BRAID
- ✱ POWER ON TEST
- ✍ NOTE ICON

23



Legend

 DISCONNECT
  CONNECT / RECONNECT
  TURN / FLIP
  DIRECTIONAL
  TWIST / BRAID
  POWER ON TEST
  NOTE ICON

24



Plate 1x6 (Any Colour)



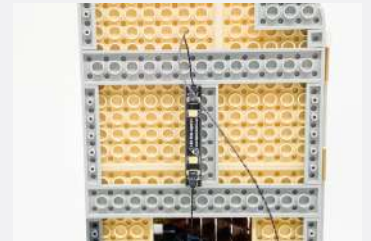
White Strip Light



30cm Connecting Cable



25



Legend

→ DISCONNECT

→ CONNECT / RECONNECT

↻ TURN / FLIP

→ DIRECTIONAL

↻ TWIST / BRAID

✱ POWER ON TEST

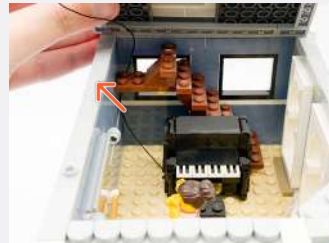
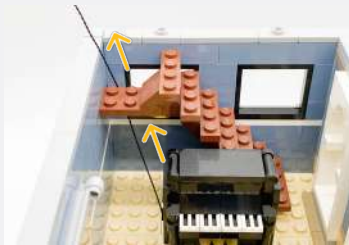
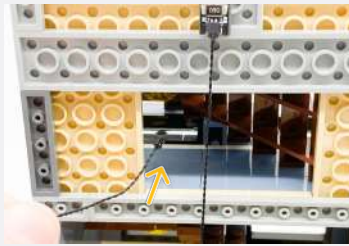
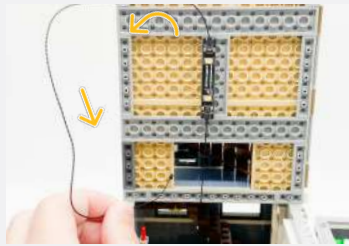
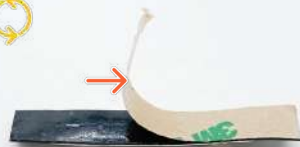
📝 NOTE ICON

26

Plate 1x6 (Any Colour)



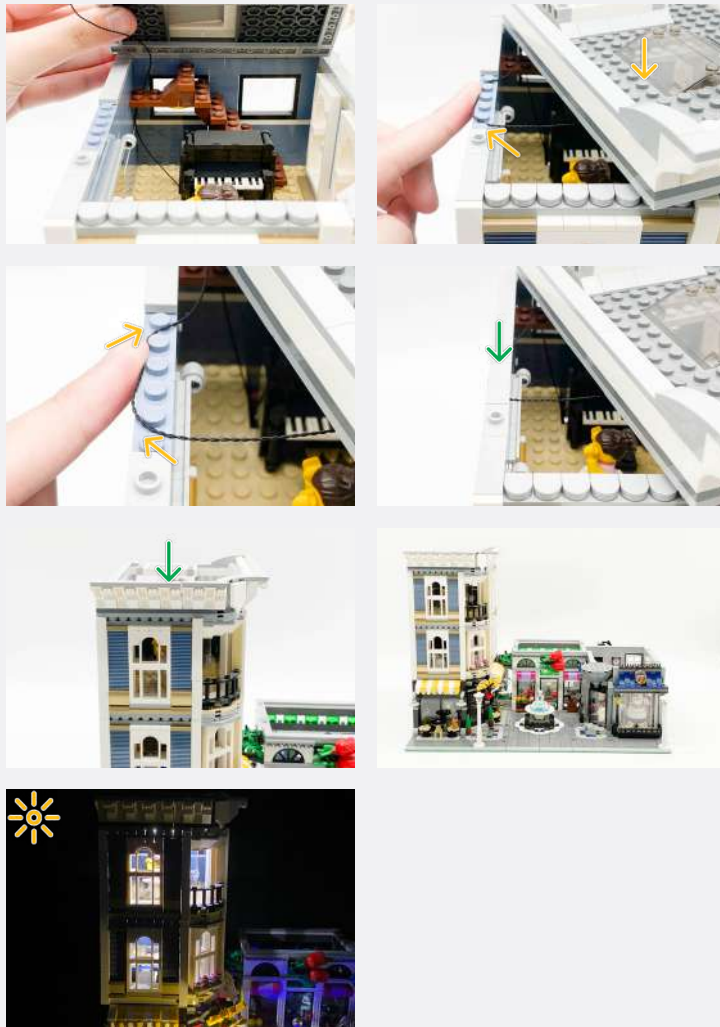
White Strip Light



Legend

DISCONNECT
 CONNECT / RECONNECT
 TURN / FLIP
 DIRECTIONAL
 TWIST / BRAID
 POWER ON TEST
 NOTE ICON

📌 If you experience any issues with the lights not working and suspect an issue with a component, please try a different port on the expansion board to verify where the fault lies (with the light or expansion board). To correct any issues with expansion board ports, please view the section addressing expansion board issues in our troubleshooting section.

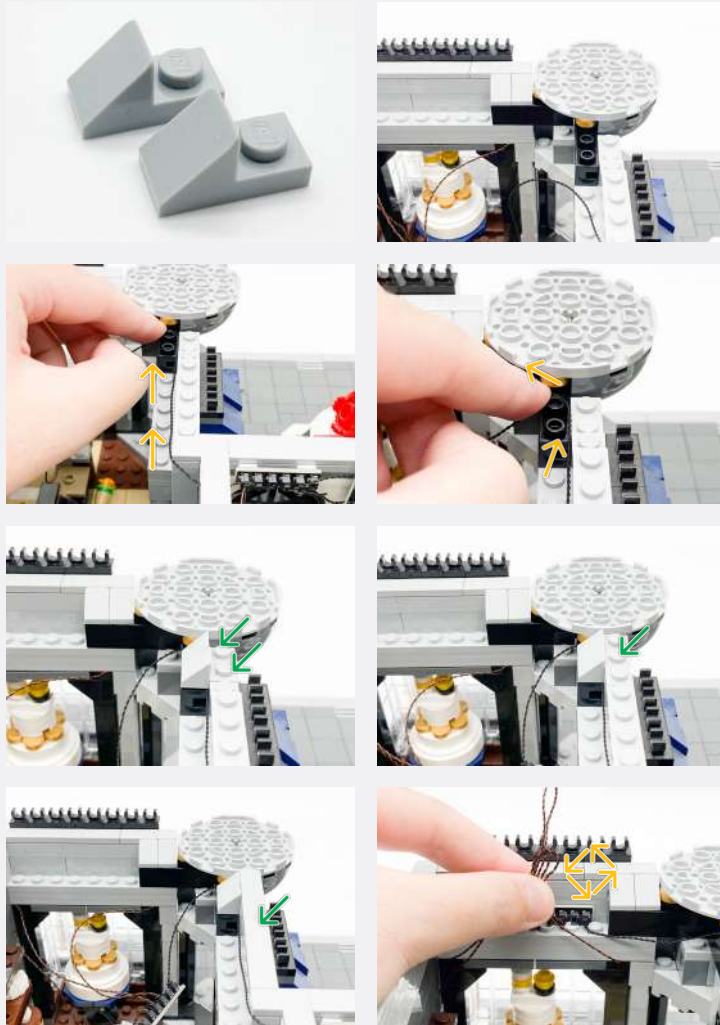


27



Legend

→ DISCONNECT → CONNECT / RECONNECT ↺ TURN / FLIP → DIRECTIONAL ↻ TWIST / BRAID ☀ POWER ON TEST 📌 NOTE ICON



28



2x Adhesive Squares

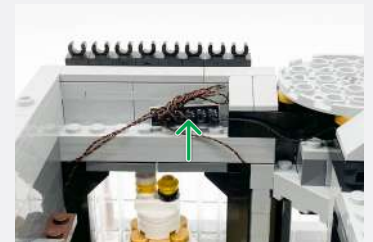
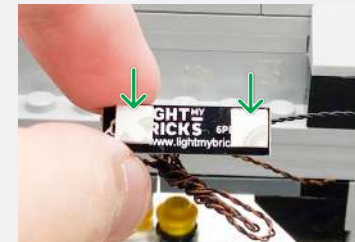


Plate 1x6 (Any Colour)



White Strip Light



Legend

→ DISCONNECT

→ CONNECT / RECONNECT

↻ TURN / FLIP

→ DIRECTIONAL

↻ TWIST / BRAID

✱ POWER ON TEST

📝 NOTE ICON



29

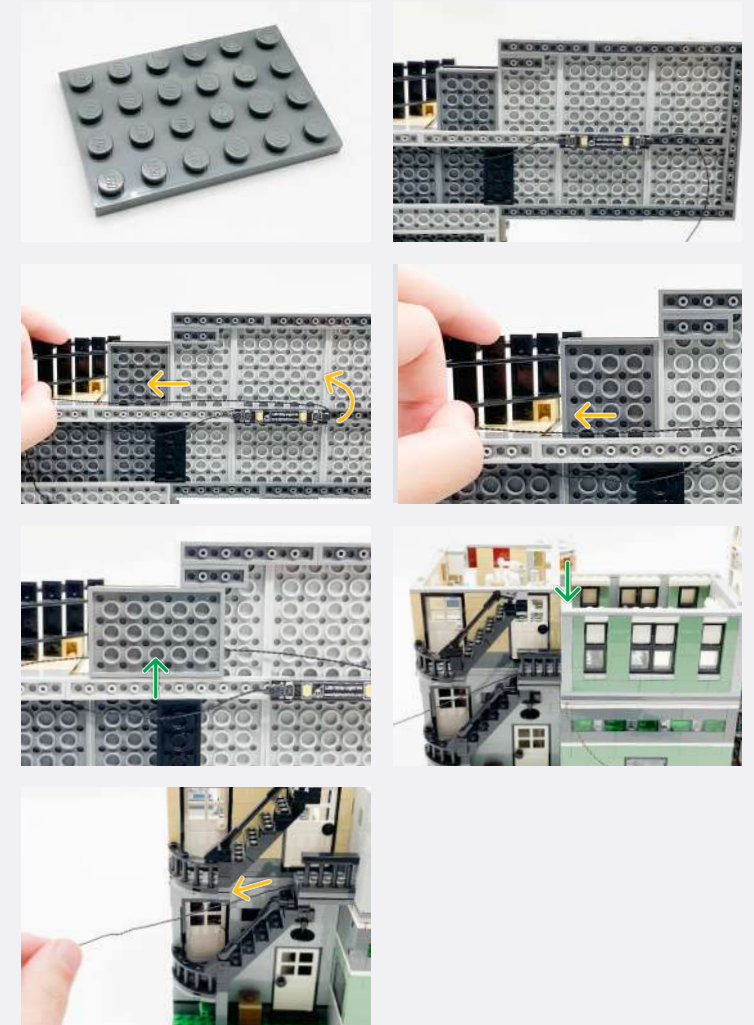
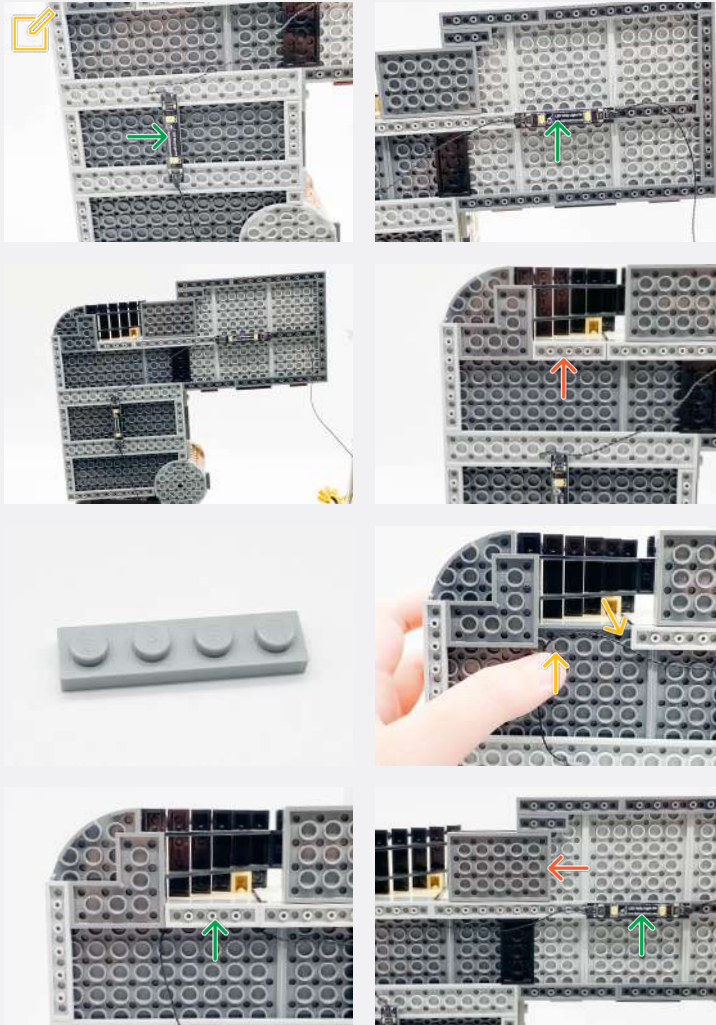
Connect the pair of Strip Lights to the Expansion Board from the 15cm Connecting Cable from step 27.



Legend

 DISCONNECT
  CONNECT / RECONNECT
  TURN / FLIP
  DIRECTIONAL
  TWIST / BRAID
  POWER ON TEST
  NOTE ICON

Place the Strip Light that is connected to the Expansion Board first.



Legend

 DISCONNECT
  CONNECT / RECONNECT
  TURN / FLIP
  DIRECTIONAL
  TWIST / BRAID
  POWER ON TEST
  NOTE ICON

30



Legend

 DISCONNECT
  CONNECT / RECONNECT
  TURN / FLIP
  DIRECTIONAL
  TWIST / BRAID
  POWER ON TEST
  NOTE ICON

31

Plate 1x6 (Any Colour)



White Strip Light



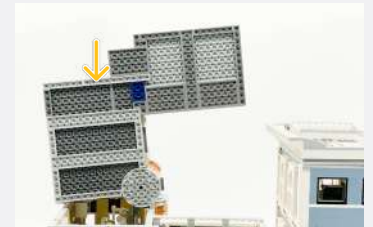
2x



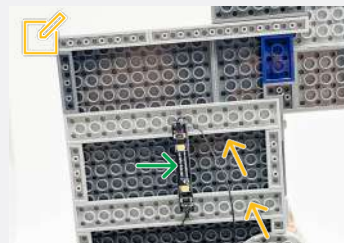
15cm Connecting Cable



30cm Connecting Cable

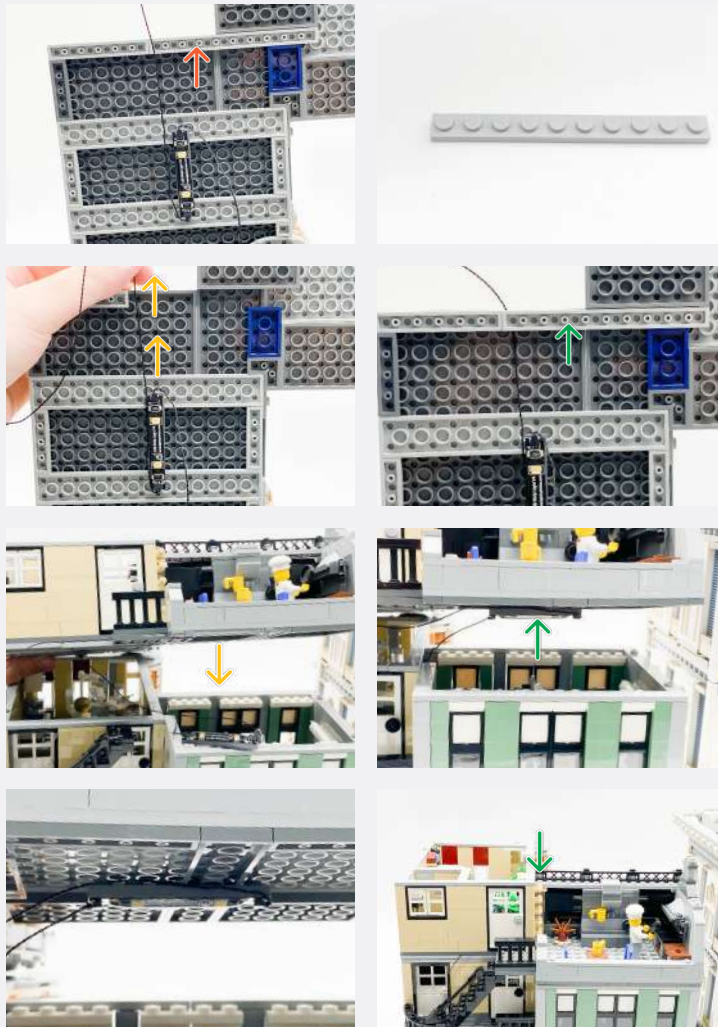


Connect the Strip Light with the loose 30cm Connecting Cable first.



Legend

DISCONNECT
 CONNECT / RECONNECT
 TURN / FLIP
 DIRECTIONAL
 TWIST / BRAID
 POWER ON TEST
 NOTE ICON



32



Legend

- DISCONNECT
- CONNECT / RECONNECT
- ↻ TURN / FLIP
- DIRECTIONAL
- ↻↻ TWIST / BRAID
- ✱ POWER ON TEST
- 📝 NOTE ICON

33



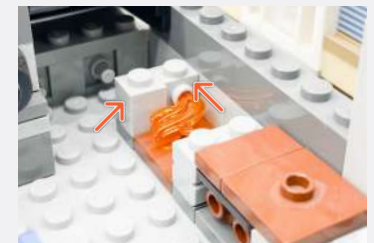
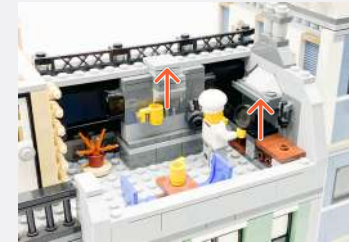
Plate 1x6 (Any Colour)



White Strip Light



34



Legend

→ DISCONNECT

→ CONNECT / RECONNECT

↻ TURN / FLIP

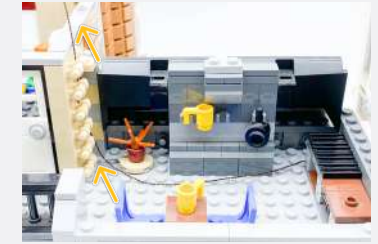
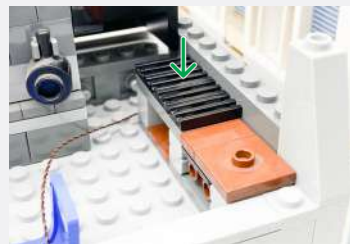
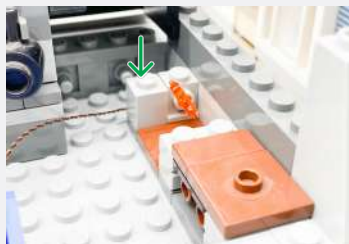
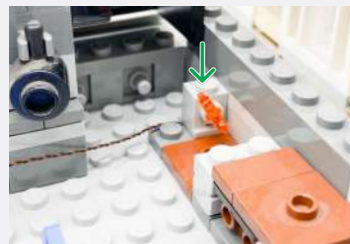
→ DIRECTIONAL

↻ TWIST / BRAID

⚡ POWER ON TEST

📝 NOTE ICON

35



Legend

→ DISCONNECT

→ CONNECT / RECONNECT

↻ TURN / FLIP

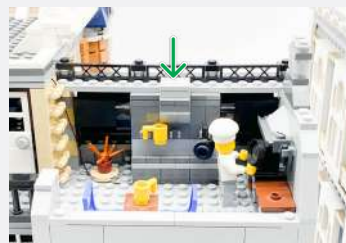
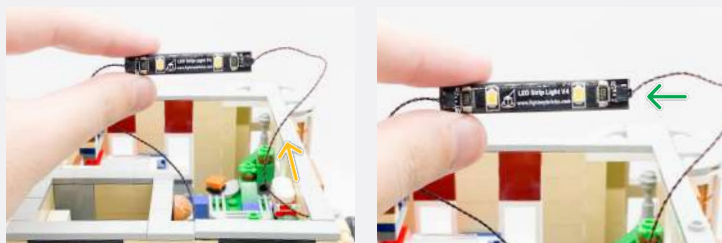
→ DIRECTIONAL

↻ TWIST / BRAID

✳ POWER ON TEST

📝 NOTE ICON

📌 If you experience any issues with the lights not working and suspect an issue with a component, please try a different port on the expansion board to verify where the fault lies (with the light or expansion board). To correct any issues with expansion board ports, please view the section addressing expansion board issues in our troubleshooting section.



36

Legend

→ DISCONNECT

→ CONNECT / RECONNECT

↻ TURN / FLIP

→ DIRECTIONAL

↻ TWIST / BRAID

☀ POWER ON TEST

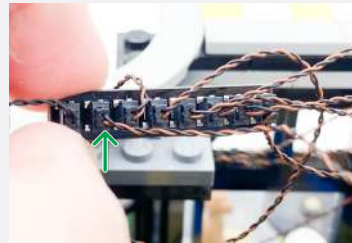
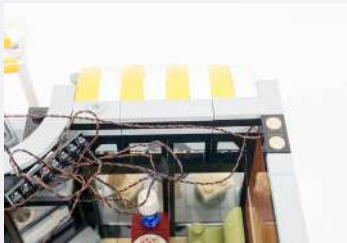
📌 NOTE ICON



WIRELESS POWER CONNECTORS

If you have purchased the additional components to use Wireless Power Connectors for the Assembly Square, please continue onto the next page.

21



Legend

 DISCONNECT
  CONNECT / RECONNECT
  TURN / FLIP
  DIRECTIONAL
  TWIST / BRAID
  POWER ON TEST
  NOTE ICON

22

Plate 1x6 (Any Colour)



White Strip Light



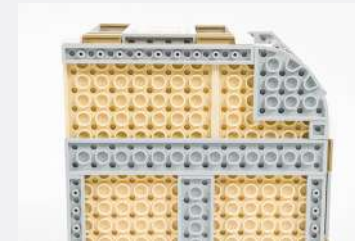
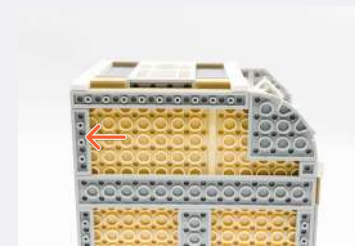
15cm Connecting Cable



Wireless Power Connector
(Plate Side)

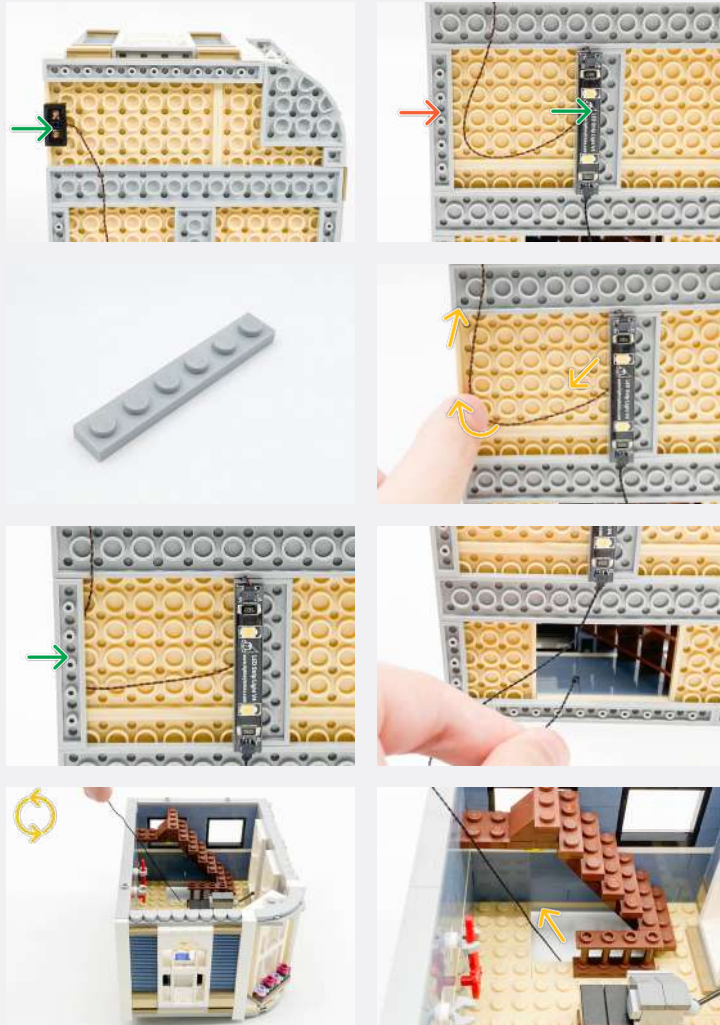


23



Legend

DISCONNECT
 CONNECT / RECONNECT
 TURN / FLIP
 DIRECTIONAL
 TWIST / BRAID
 POWER ON TEST
 NOTE ICON



Ensure the Wireless Power Connector's are aligned and touching.

24

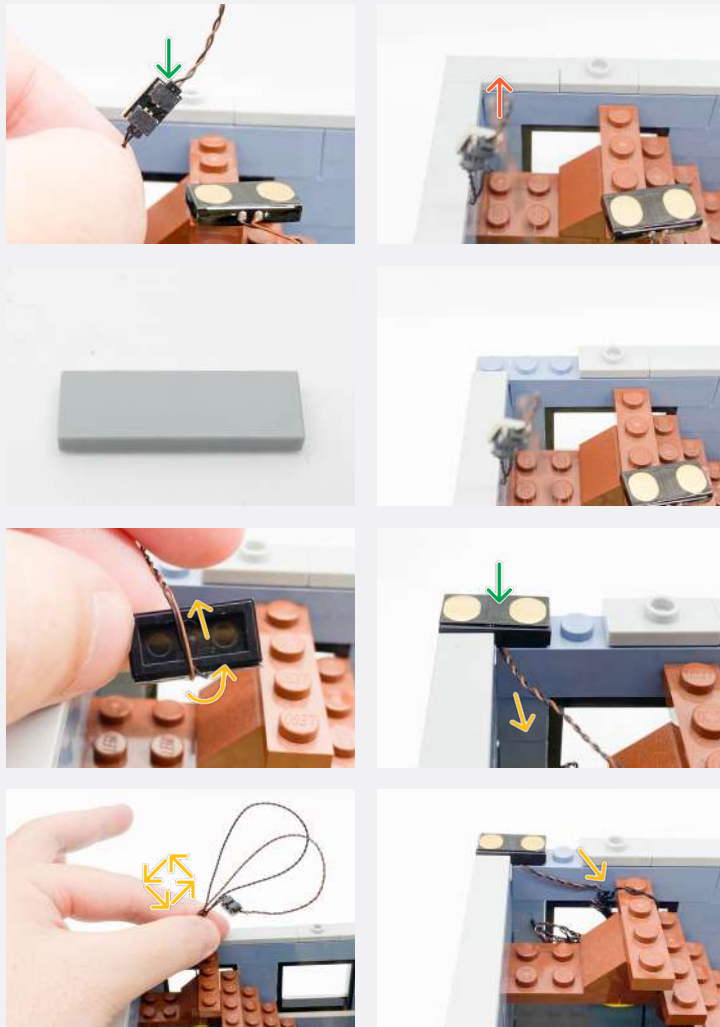


2-Port Expansion Board

Wireless Power Connector (Tile Side)

Legend

→ DISCONNECT → CONNECT / RECONNECT ↺ TURN / FLIP → DIRECTIONAL ↻ TWIST / BRAID ✨ POWER ON TEST 📌 NOTE ICON

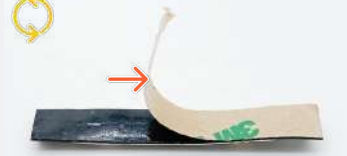


25

Plate 1x6 (Any Colour)



White Strip Light



30cm Connecting Cable



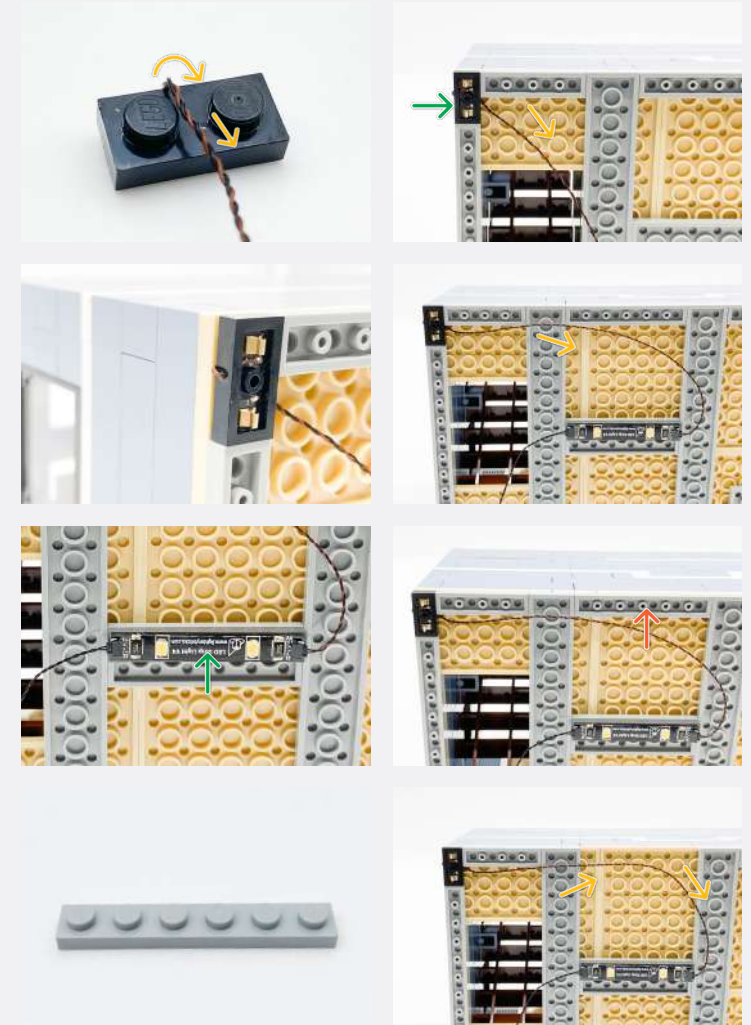
Wireless Power Connector
(Plate Side)



Legend

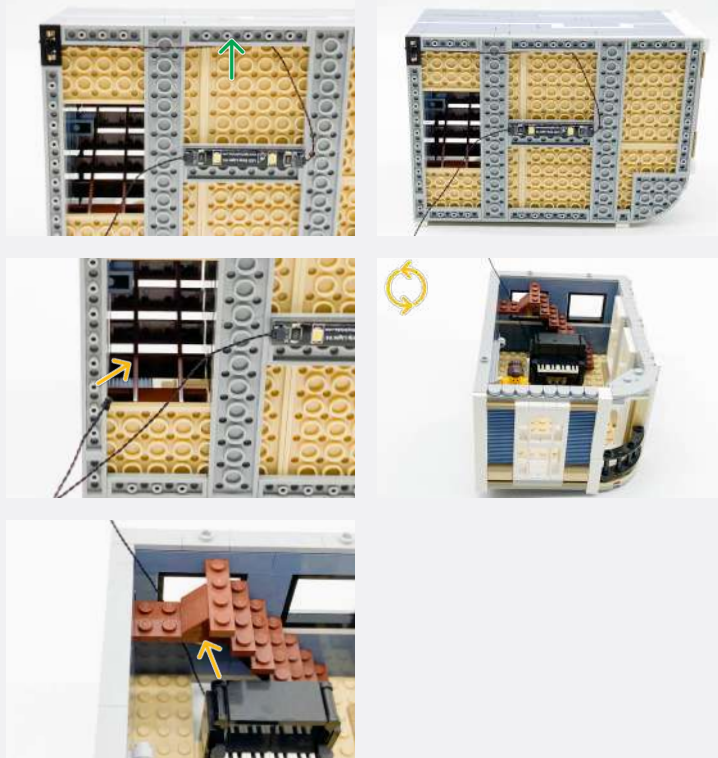
 DISCONNECT
  CONNECT / RECONNECT
  TURN / FLIP
  DIRECTIONAL
  TWIST / BRAID
  POWER ON TEST
  NOTE ICON

26



Legend

- DISCONNECT
- CONNECT / RECONNECT
- ↻ TURN / FLIP
- DIRECTIONAL
- ↻ TWIST / BRAID
- ✱ POWER ON TEST
- 📝 NOTE ICON

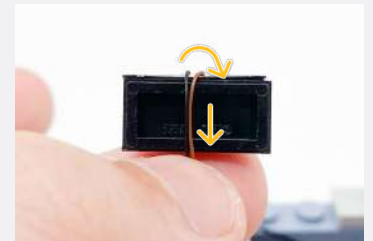
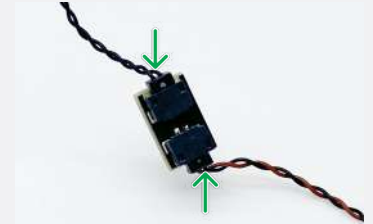


27

2-Port Expansion Board

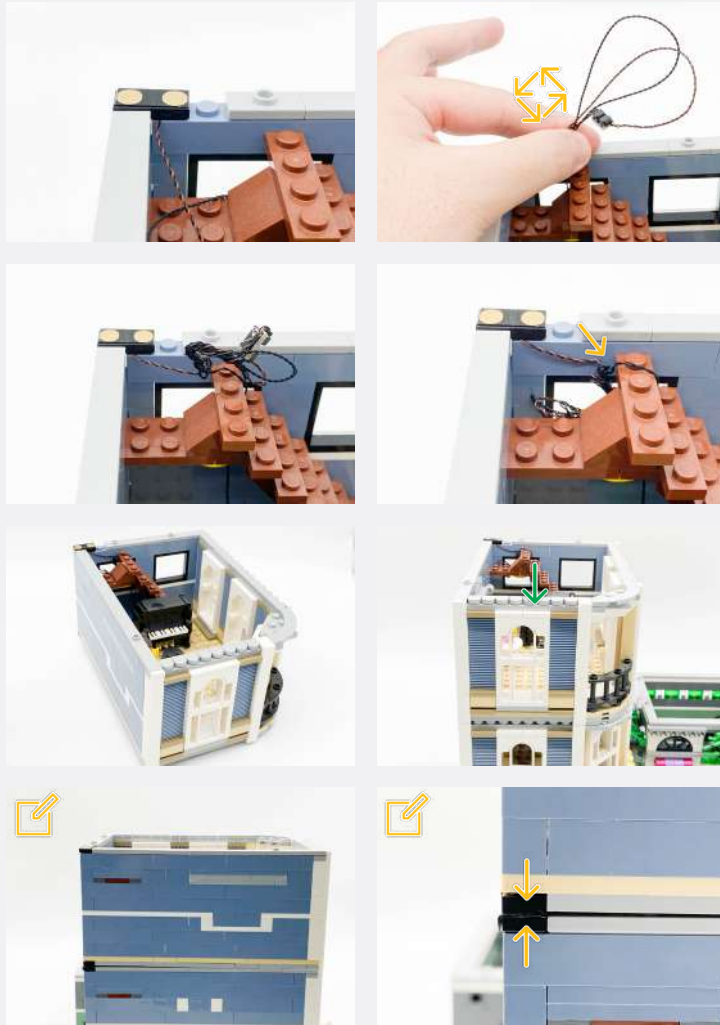


Wireless Power Connector (Tile Side)



Legend

- DISCONNECT
- CONNECT / RECONNECT
- ↻ TURN / FLIP
- DIRECTIONAL
- ↻ TWIST / BRAID
- ⚡ POWER ON TEST
- 📝 NOTE ICON



✏ Ensure the Wireless Power Connectors are aligned and touching.

28



Plate 1x6 (Any Colour)

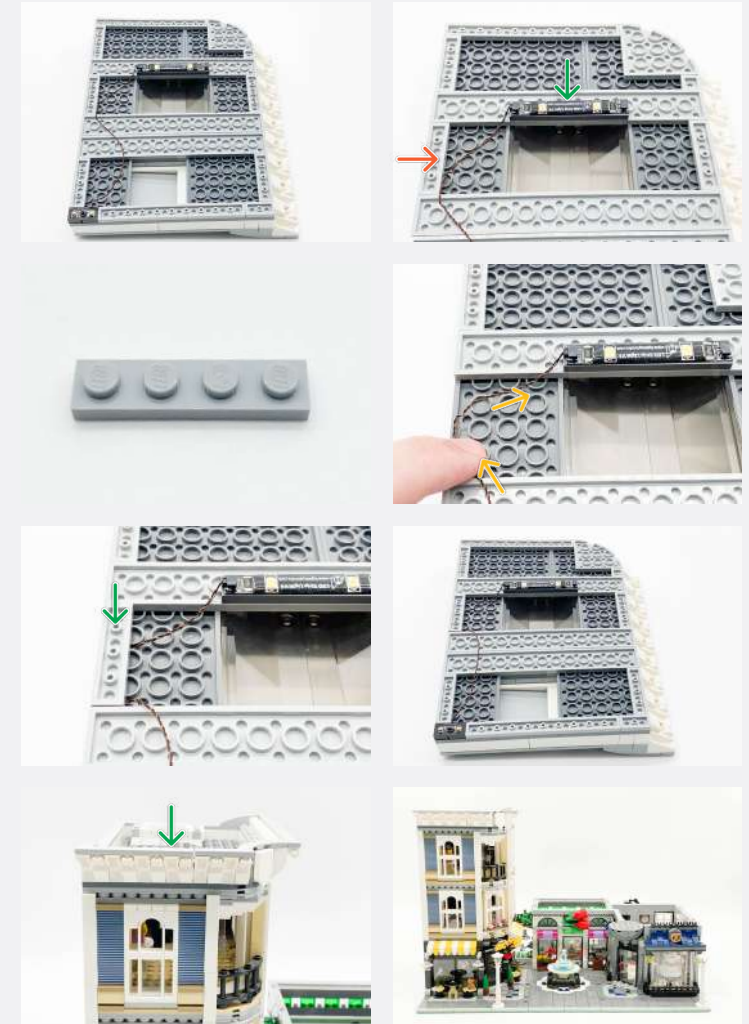
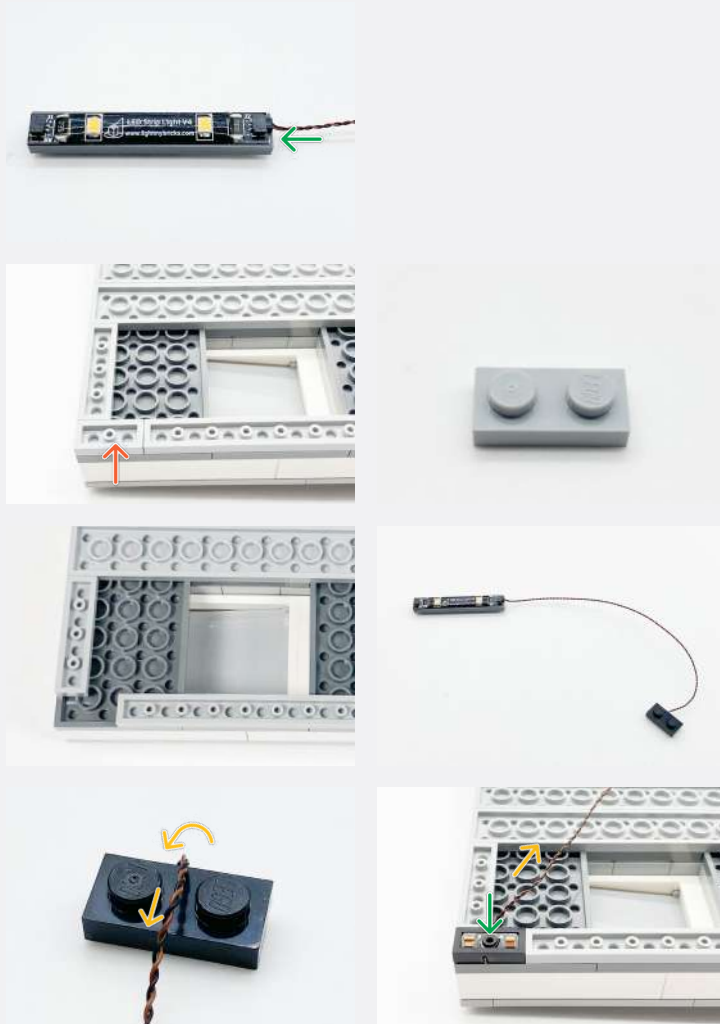
White Strip Light

Wireless Power Connector (Plate Side)

Legend


→ DISCONNECT → CONNECT / RECONNECT ↻ TURN / FLIP → DIRECTIONAL ↻ TWIST / BRAID ✨ POWER ON TEST ✏ NOTE ICON

29



Legend

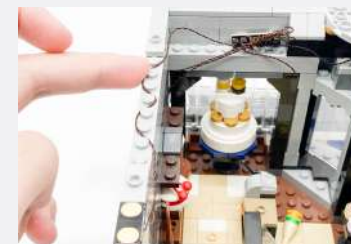
→ DISCONNECT → CONNECT / RECONNECT ↺ TURN / FLIP → DIRECTIONAL ↻ TWIST / BRAID ✨ POWER ON TEST 📝 NOTE ICON

 If you experience any issues with the lights not working and suspect an issue with a component, please try a different port on the expansion board to verify where the fault lies (with the light or expansion board). To correct any issues with expansion board ports, please view the section addressing expansion board issues in our troubleshooting section.

30



Wireless Power Connector
(Tile Side)



Legend

 DISCONNECT
  CONNECT / RECONNECT
  TURN / FLIP
  DIRECTIONAL
  TWIST / BRAID
  POWER ON TEST
  NOTE ICON

31

Plate 1x6 (Any Colour)



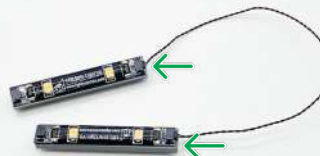
White Strip Light



2x



15cm Connecting Cable


 Wireless Power Connector
(Plate Side)

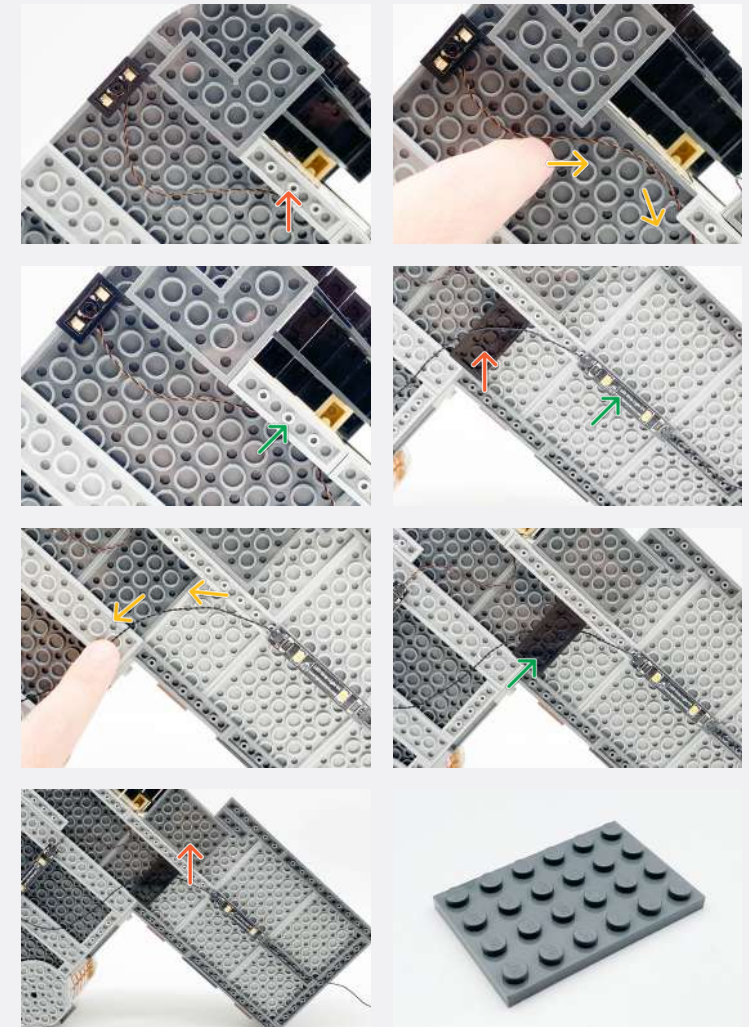

30cm Connecting Cable



Legend

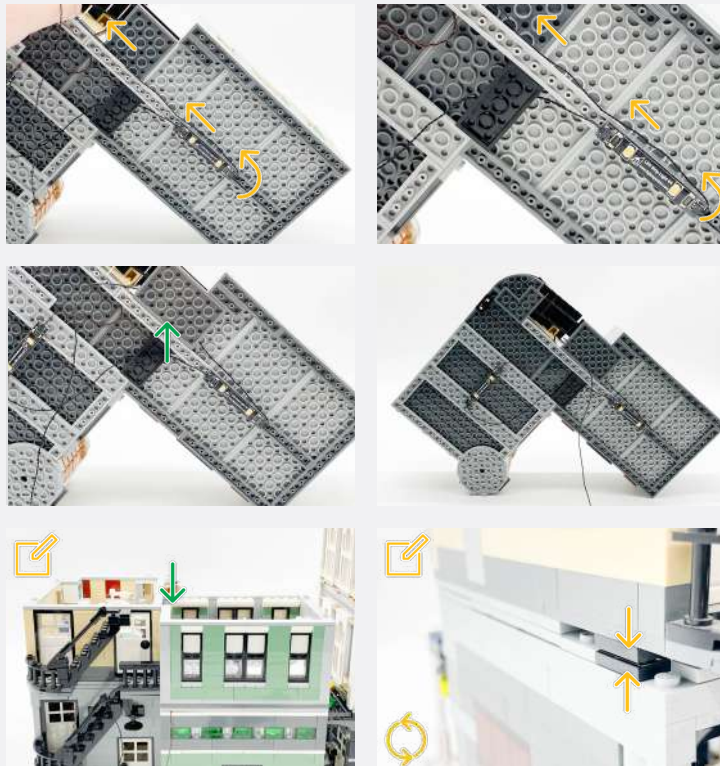
DISCONNECT
 CONNECT / RECONNECT
 TURN / FLIP
 DIRECTIONAL
 TWIST / BRAID
 POWER ON TEST
 NOTE ICON

32



Legend

DISCONNECT
 CONNECT / RECONNECT
 TURN / FLIP
 DIRECTIONAL
 TWIST / BRAID
 POWER ON TEST
 NOTE ICON



✍ Ensure the Wireless Power Connectors are aligned and touching.

33



Legend

→ DISCONNECT → CONNECT / RECONNECT ↺ TURN / FLIP → DIRECTIONAL ↻ TWIST / BRAID ✨ POWER ON TEST ✍ NOTE ICON

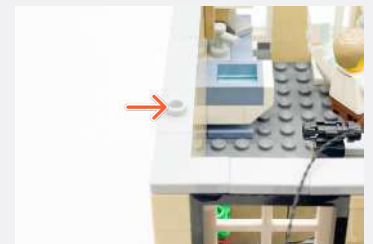


34

2-Port Expansion Board



Wireless Power Connector
(Tile Side)



Legend

 DISCONNECT
  CONNECT / RECONNECT
  TURN / FLIP
  DIRECTIONAL
  TWIST / BRAID
  POWER ON TEST
  NOTE ICON



35

Plate 1x6 (Any Colour)



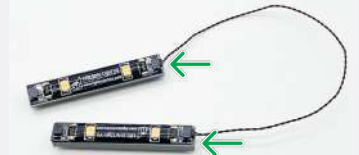
White Strip Light



15cm Connecting Cable



Wireless Power Connector
(Plate Side)



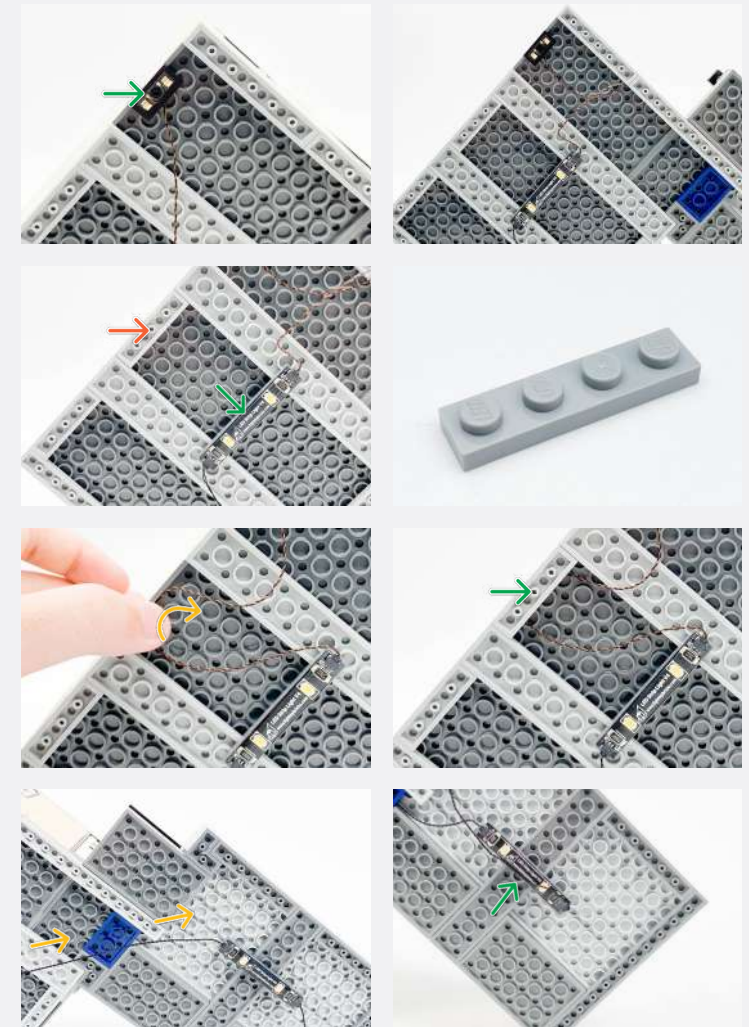
30cm Connecting Cable



Legend

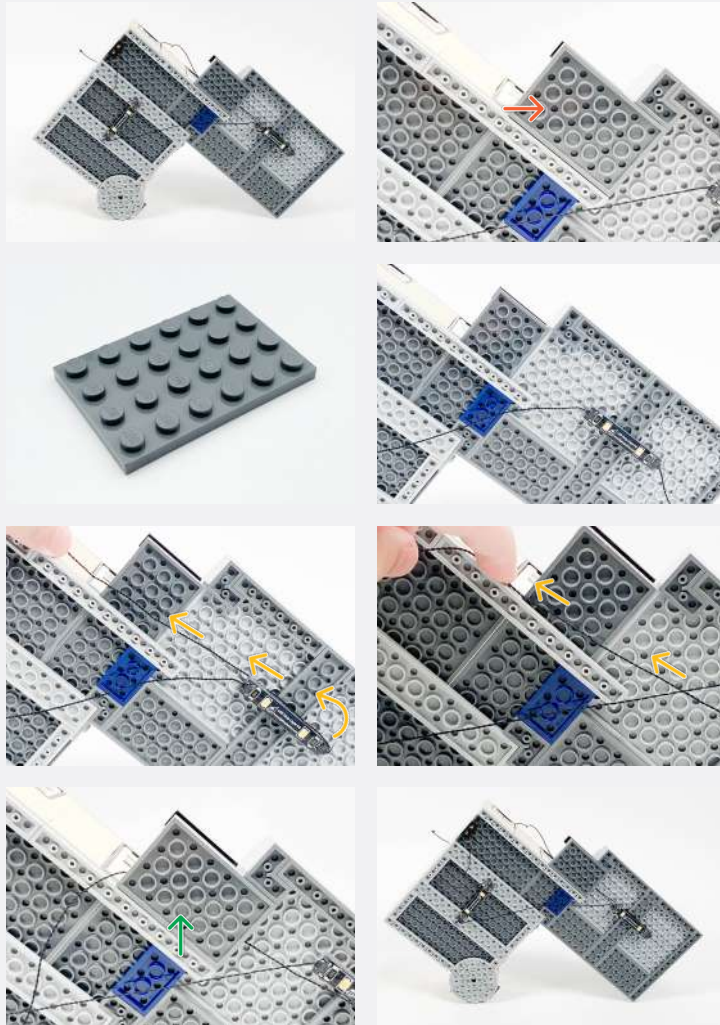
→ DISCONNECT → CONNECT / RECONNECT ↺ TURN / FLIP → DIRECTIONAL ↻ TWIST / BRAID ✨ POWER ON TEST 📝 NOTE ICON

36



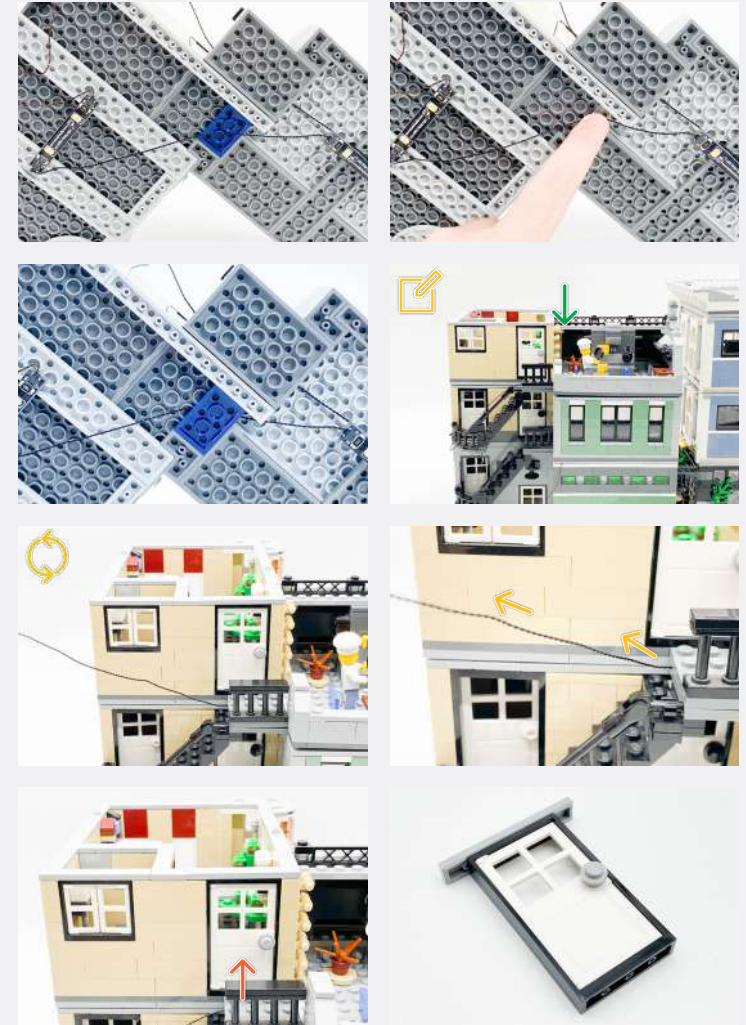
Legend

 DISCONNECT
  CONNECT / RECONNECT
  TURN / FLIP
  DIRECTIONAL
  TWIST / BRAID
  POWER ON TEST
  NOTE ICON



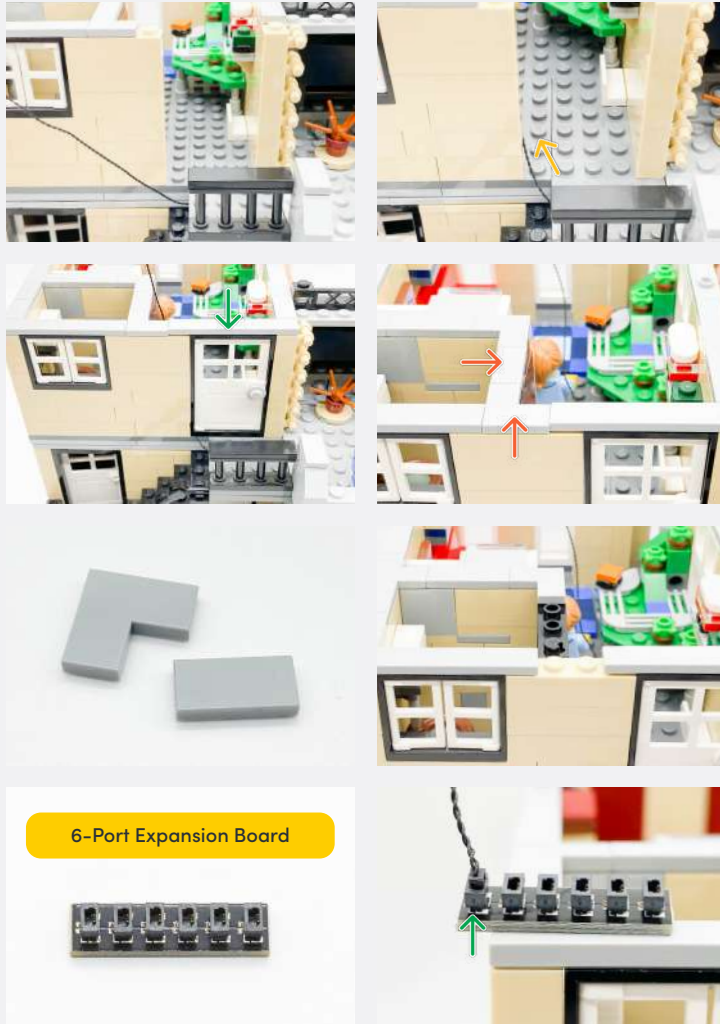
Ensure the Wireless Power Connectors are aligned and touching.

37



Legend

 DISCONNECT
  CONNECT / RECONNECT
  TURN / FLIP
  DIRECTIONAL
  TWIST / BRAID
  POWER ON TEST
  NOTE ICON

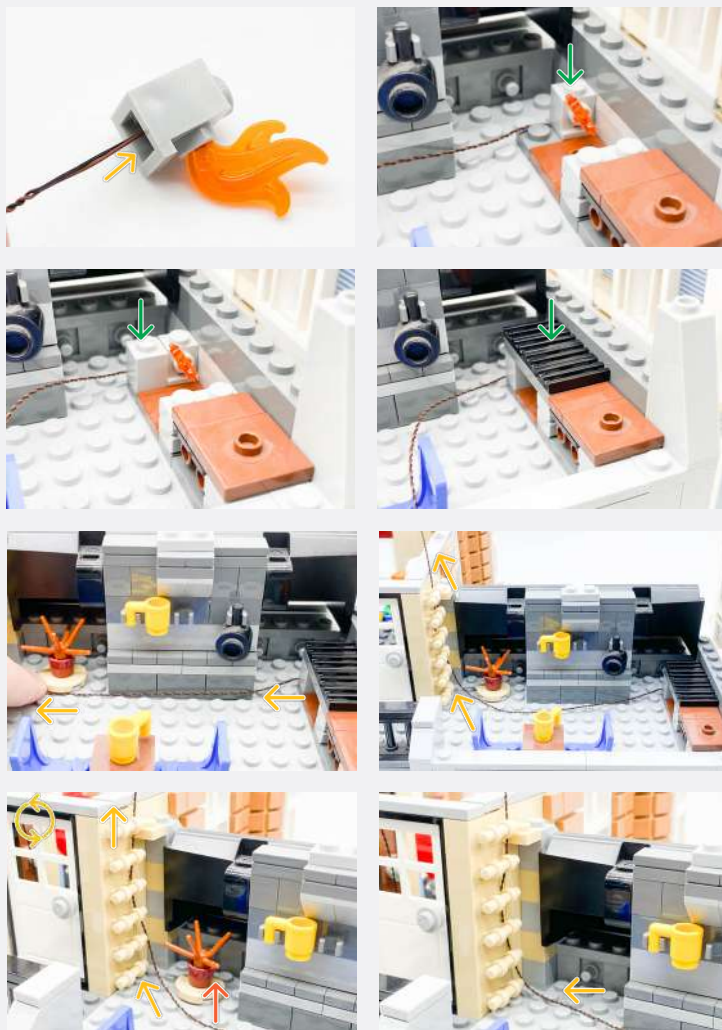


38



Legend

→ DISCONNECT → CONNECT / RECONNECT ↺ TURN / FLIP → DIRECTIONAL ↻ TWIST / BRAID ✨ POWER ON TEST 📝 NOTE ICON



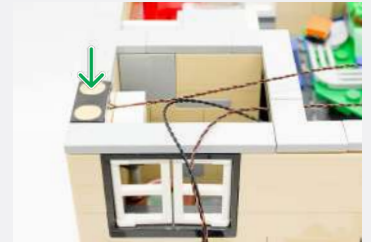
Legend

 DISCONNECT
  CONNECT / RECONNECT
  TURN / FLIP
  DIRECTIONAL
  TWIST / BRAID
  POWER ON TEST
  NOTE ICON

39



Wireless Power Connector
(Tile Side)



Legend

→ DISCONNECT

→ CONNECT / RECONNECT

↻ TURN / FLIP

→ DIRECTIONAL

↻ TWIST / BRAID

⚡ POWER ON TEST

📝 NOTE ICON

40

Plate 1x6 (Any Colour)



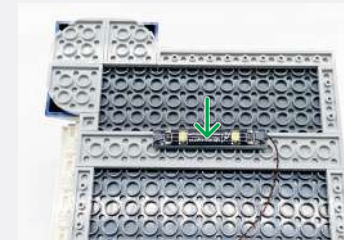
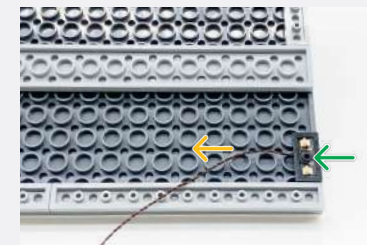
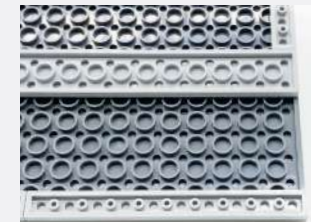
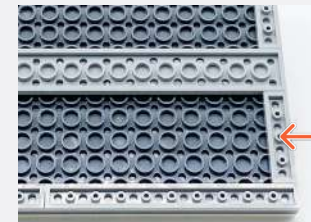
White Strip Light



Wireless Power Connector
(Plate Side)



41



Legend



DISCONNECT



CONNECT /
RECONNECT



TURN / FLIP



DIRECTIONAL



TWIST / BRAID



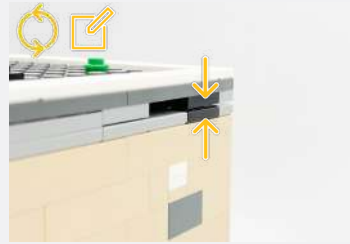
POWER ON TEST



NOTE ICON

✎ If you experience any issues with the lights not working and suspect an issue with a component, please try a different port on the expansion board to verify where the fault lies (with the light or expansion board). To correct any issues with expansion board ports, please view the section addressing expansion board issues in our troubleshooting section.

✎ Ensure the Wireless Power Connectors are aligned and touching.



Legend

→ DISCONNECT → CONNECT / RECONNECT ↺ TURN / FLIP → DIRECTIONAL ↻ TWIST / BRAID ✨ POWER ON TEST ✎ NOTE ICON

FINAL PRODUCT

This finally completes installation of the Light My Bricks Assembly Square 10255 Light Kit.





TROUBLESHOOTING

Light My Bricks lighting kits contain individual components that are very small and can be easily damaged if not handled correctly.

To prevent unnecessary damage to components, we highly recommend that the User Guide section, **“Important things to note”** is read carefully. Follow the handling procedures in the User Guide to help prevent faults and damages to your Light My Bricks components.

If you are experiencing issues with your Light My Bricks set, watch our troubleshooting video [here](#) or read on for a list of common causes to help you troubleshoot.

Troubleshooting

Firstly, ensure that the batteries have power using a battery charge gauge.

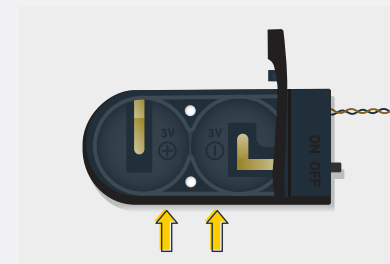
If the batteries have no power, replace the batteries.

If the batteries still have power, check to see if the batteries have been inserted correctly into the battery pack.

Check For CR2032 Batteries Using The Flat Battery Pack

Inside the battery pack is a symbol indicating which side the (round) CR2032 battery should be inserted. Check that the “+” side of the battery pack has the battery with the “+” symbol facing downwards.

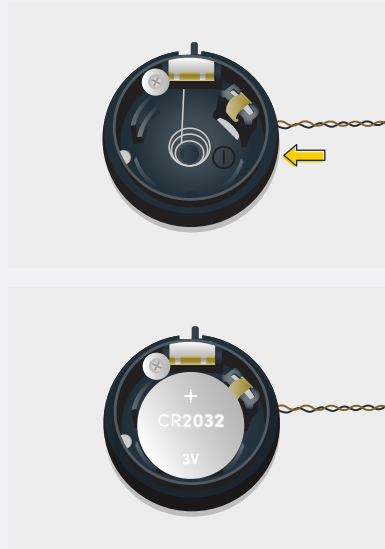
On the opposite side, the “-” side of the battery pack should have the battery flipped upside down, that is the “+” symbol facing upwards.



Troubleshooting

Check For Cr2032 Batteries Using The Round Battery Pack

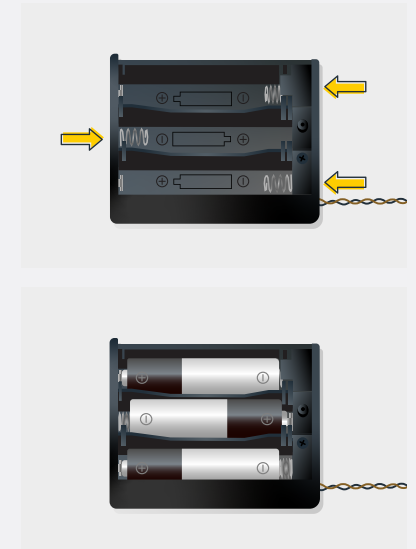
Inside the battery pack is a symbol indicating which side the (round) CR2032 battery should be inserted. In this case, for the stacked battery pack, ensure that BOTH batteries have the “+” symbol facing upwards.



Check for AA batteries using the AA battery pack

Inside the battery pack are symbols indicating which direction the AA battery should be inserted. The flat side of the battery should be paired with the spring side of the battery pack.

If the batteries have been installed correctly and your kit still isn't operating correctly, the next step is to check the wiring.



Troubleshooting

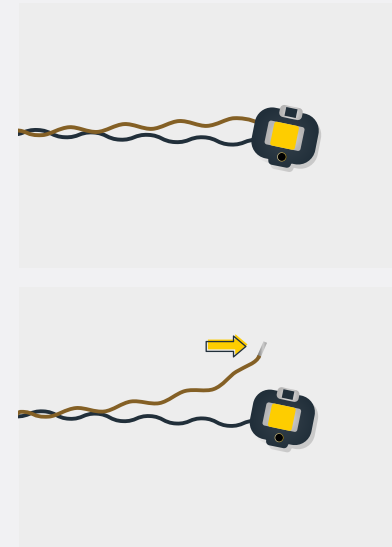
Check Your Wires

In order for Light My Bricks components to fit in between and underneath LEGO® bricks, the components need to be very small. Due to this nature, Light My Bricks components can be easily damaged when not handled correctly.

Be careful when removing unpacked components out of the packaging and ensure not to forcibly pull at the wires as this can damage the soldering that attach the wires to the LEDs.

If the wiring is detached from the LED itself, the light will not operate.

When connecting lights to your LEGO set, check that there are no pinched wires underneath or in between bricks and plates. When the wires are pinched and the exposed wires are touching each other, this can cause a crosswire and the lights to not function correctly.



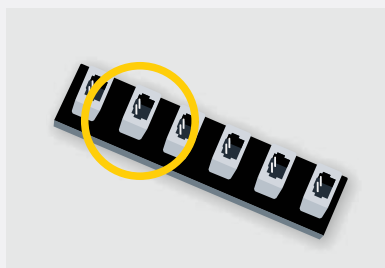
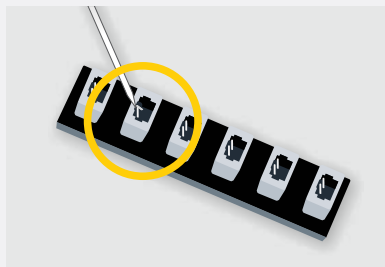
Troubleshooting

Check Your Expansion Board Ports/ Strip Light Ports / Effects Board Ports

It is important to note that connectors can only be inserted to the expansion board, strip light, or effects board ports in one direction.

Forcibly inserting connectors in the incorrect direction will result in damaging the pins inside each of the ports on your component board.

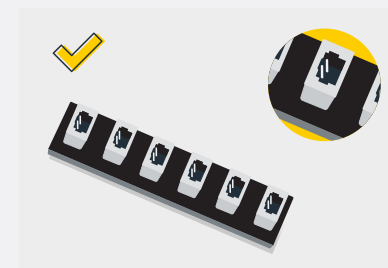
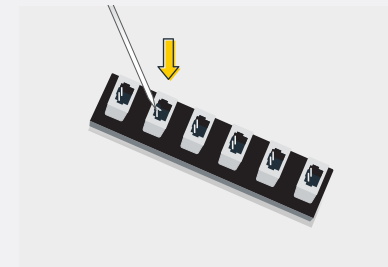
Not only will a light connected to the damaged port not work, but if the pins inside the port are bent to a point they are touching each other, this can result in all other lights in the system to stop working. This is a short circuit.



A short circuit can also result in overheating of the board, cable or batteries. If you suspect a short circuit, **DISCONNECT POWER IMMEDIATELY**. Batteries can fail, catch fire, or even explode if left connected to a short circuit for too long.

If you suspect you have a faulty component due to a bent pin, try the following steps:

If you look carefully inside each of the ports, each port contains 2 small pins that should be straight. You will be able to identify a faulty port if it has any bent pins.





CONTACT US

If you have an enquiry regarding the online shop, our products or a general enquiry please refer to our Frequently Asked Questions webpage here.

Alternatively, you can contact our Customer Services team by visiting our online support portal here.

support.lightmybricks.com

We thank you for purchasing this product and hope you enjoy!



lightmybricks.com