



**LIGHT^{MY}
BRICKS**



**LEGO® UCS REPUBLIC GUNSHIP
#75309 LIGHT KIT
INSTALLATION GUIDE**

Light My Bricks



LEGO® UCS REPUBLIC GUNSHIP #75309 LIGHT KIT INSTALLATION GUIDE

Hi There!

We're here to help you get started on the LEGO®
UCS Republic Gunship (75309) Light Kit.

This PDF details the instructions for the LED light & sound
kit only. If you are wishing to purchase this product, please
[click here to view the product.](#)

If you run into any issues, please refer to the troubleshoot-
ing section towards the end of this guide.

Have fun and enjoy!



PACKAGE CONTENTS:



- 5 x Green 30cm Large Bit Light*
- 9 x Cool White 30cm Bit Light*
- 7 x Cool White 15cm Bit Light
- 3 x Red Strip Light
- 1 x Purple/Dark Pink Lightsaber



- 3 x 2-Port Expansion Board*
- 3 x 8-Port Expansion Board*
- 1 x 12-Port Expansion Board



- 1 x Gun Effects Board



- 2 x 5cm Connecting Cables
- 5 x 15cm Connecting Cables*
- 2 x 30cm Connecting Cable



- 1 x USB Power Cable
(Power Source not Included)

LEGO PIECES:



- 4 x Black Plate 1x2
- 1 x Black Plate 2x8
- 6 x Trans Light Blue Round Plate 1x1
- 6 x Trans Clear Plate 1x1

Contents

Before You Begin	5
Instructions	9
Final Product	42
Troubleshooting	43
Contact	48

Before You Begin



Laying cables in between and underneath bricks

Cables can fit in between and underneath LEGO® bricks, plates, and tiles providing they are laid correctly between the LEGO® studs. Do NOT forcefully join LEGO® together around cables; instead ensure they are laying comfortably in between each stud.

CAUTION: Forcing LEGO® to connect over a cable can result in damaging the cable and light.



Connecting Cable Connectors To Expansion Boards

Take extra care when inserting connectors to ports of Expansion Boards. Connectors can be inserted only one way. With the expansion board facing up, look for the soldered “=” symbol on the left side of the port. The connector side with the wires exposed should be facing toward the soldered “=” symbol as you insert into the port. If a plug won’t fit easily into a port connector, do not force it.

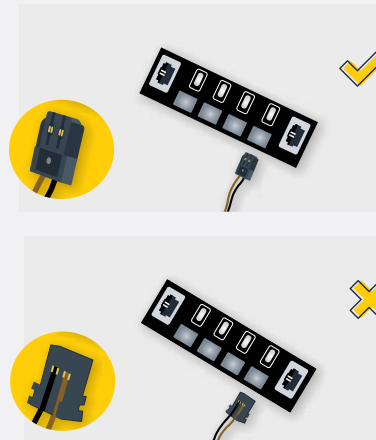
Incorrectly inserting the connector can result in bent pins inside the port or possible overheating of the expansion board when connected.

Before You Begin



Connecting Cable Connectors To Strip Lights

Take extra care when inserting connectors to ports on the Strip Lights. Connectors can be inserted only one way. With the Strip Light facing up, ensure the side of the connector with the wires exposed is facing down. If a plug won't fit easily into a port connector, don't force it. Doing so will damage the plug and the connector.



Connecting Micro Cable Connectors To Micro Expansion Board Ports

Take extra care when inserting the micro connectors to micro ports of Micro Expansion Boards. Connecting Micro Bit Lights to Micro Expansion Boards is similar to connecting lights and cables to Strip Lights. With the expansion board facing up, ensure the side of the connector with the wires exposed is facing down. If a plug won't fit easily into a port connector, do not force it. Use your fingernail to push the plastic part of the connector to the micro port.

Before You Begin

Installing Bit Lights Under Lego® Bricks And Plates

When installing Bit Lights under LEGO® pieces, ensure they are placed the correct way up (Yellow LED component exposed). You can either place them directly on top of LEGO® studs or in between.

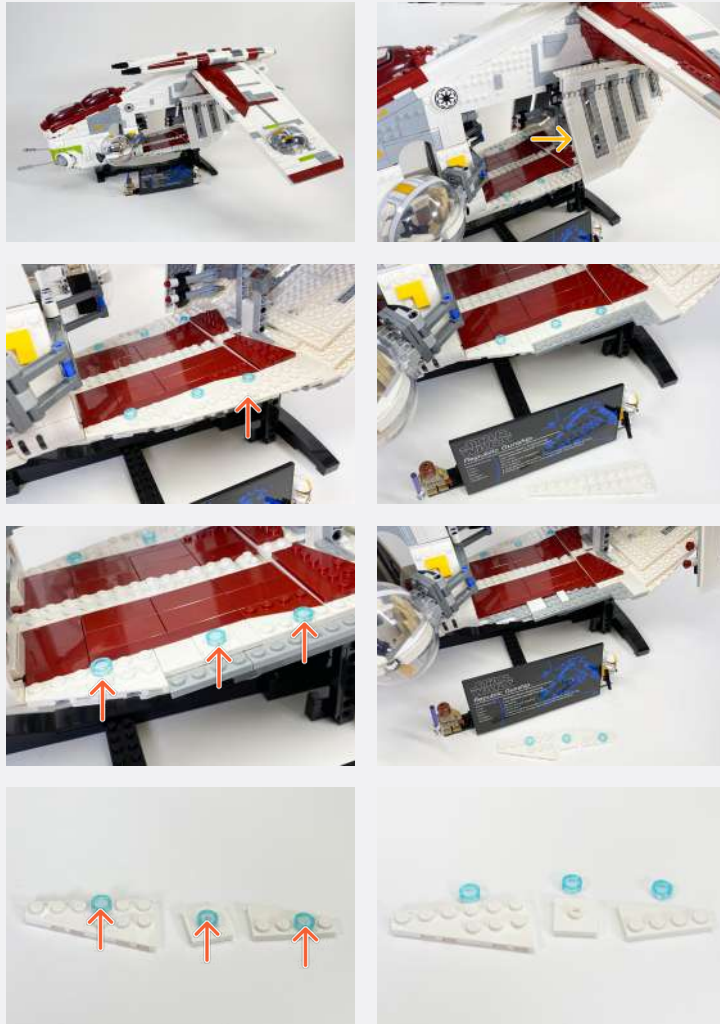




INSTRUCTIONS

To ensure a smooth installation of your light kit, please read and follow each step carefully. If you run into any issues, please refer to the online troubleshooting guide.

1



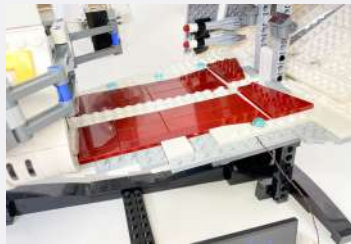
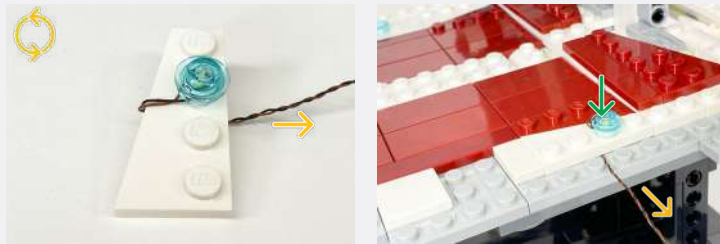
2



Legend

- DISCONNECT
- CONNECT / RECONNECT
- ↻ TURN / FLIP
- DIRECTIONAL
- ↻↻ TWIST / BRAID
- ✳ POWER ON TEST
- 📝 NOTE ICON

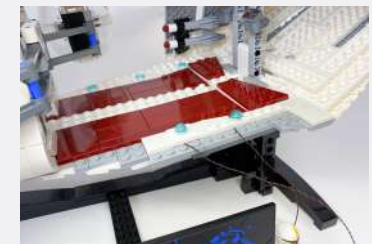
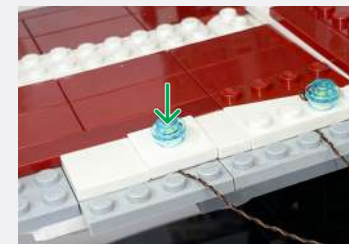
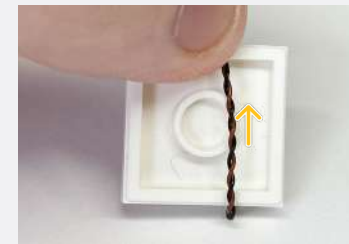
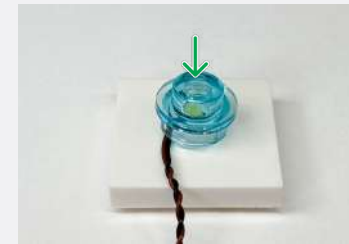
3



Cool White 15cm Bit Light



Trans Light Blue Round Plate 1x1

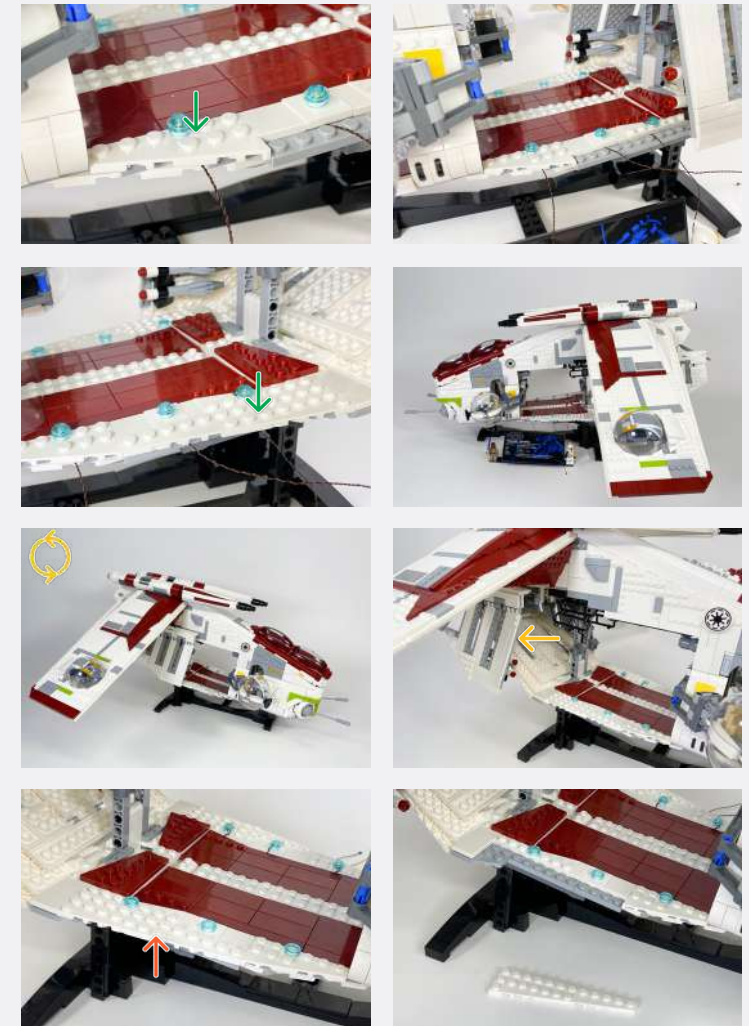


Legend → DISCONNECT → CONNECT / RECONNECT ↻ TURN / FLIP → DIRECTIONAL ↻ TWIST / BRAID ✨ POWER ON TEST 📝 NOTE ICON

4

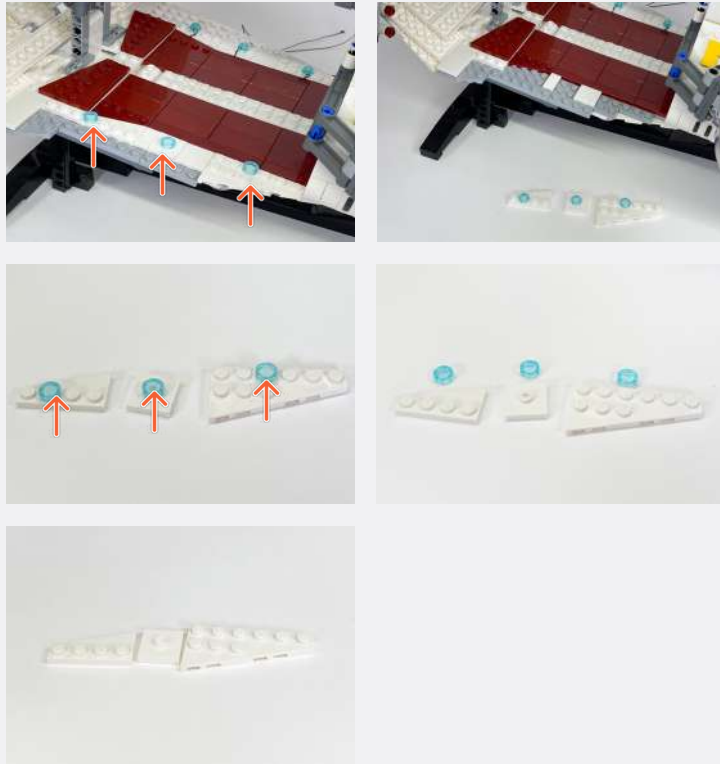


5

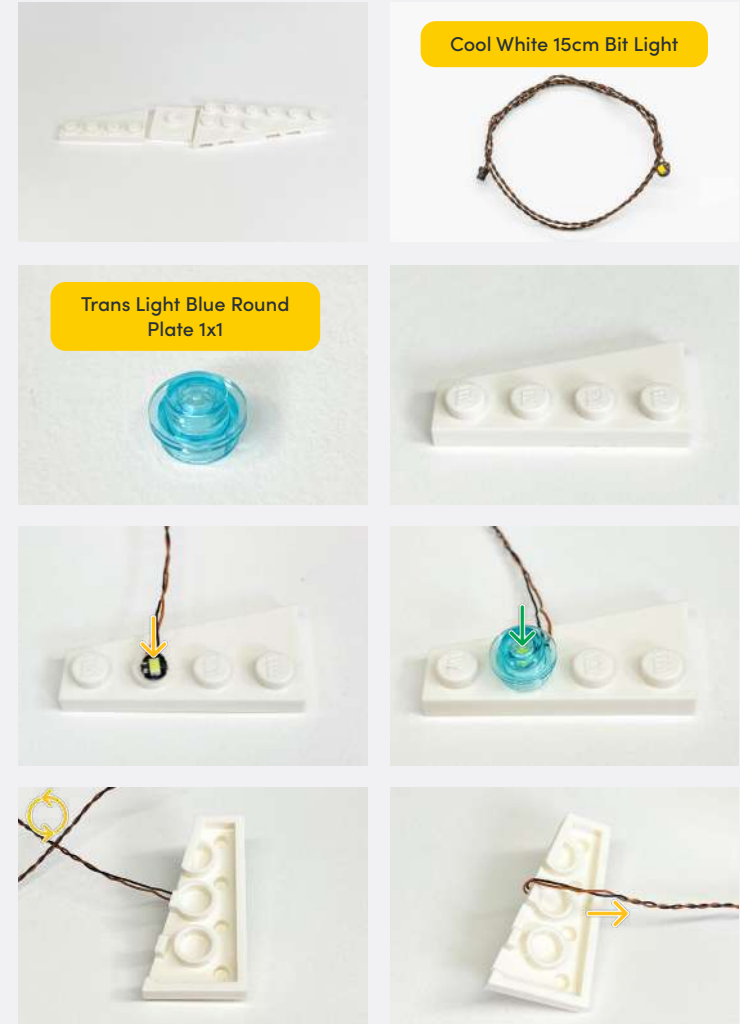


Legend

- DISCONNECT
- CONNECT / RECONNECT
- TURN / FLIP
- DIRECTIONAL
- TWIST / BRAID
- POWER ON TEST
- NOTE ICON

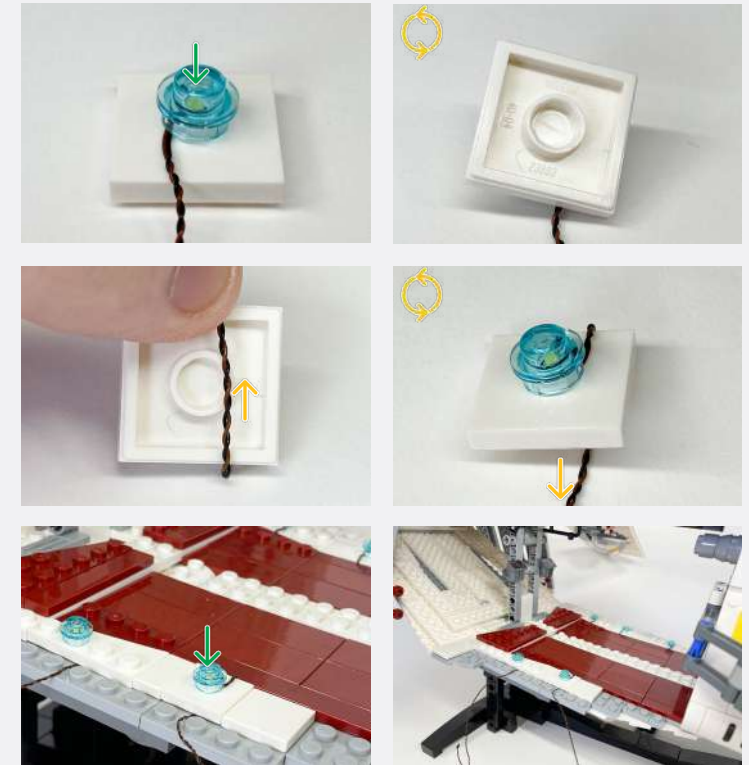
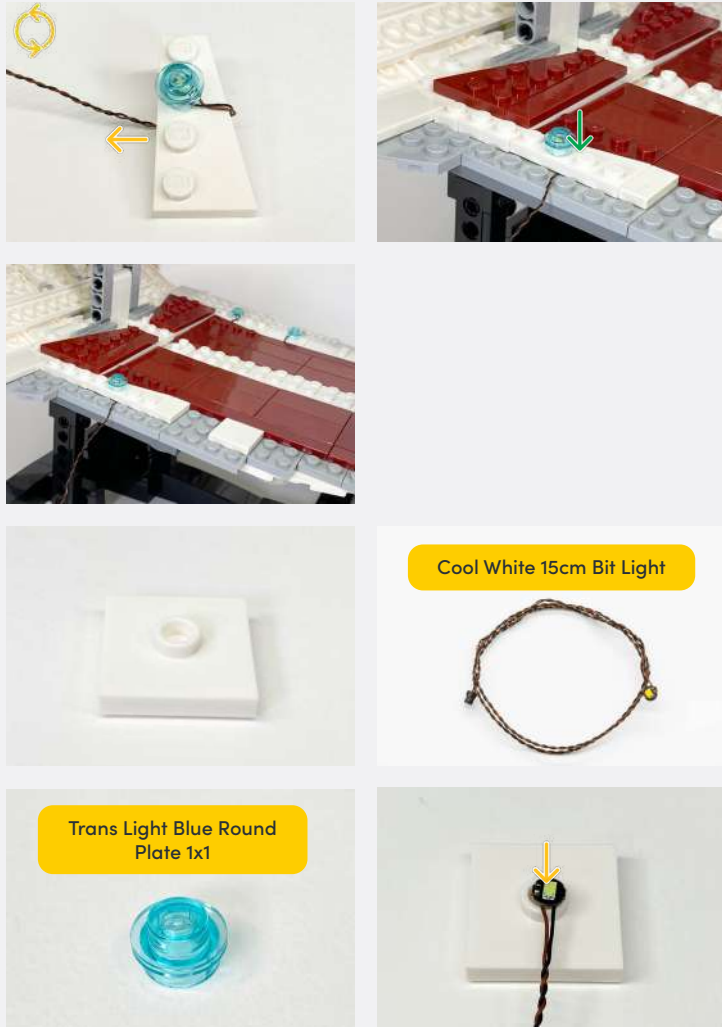


6



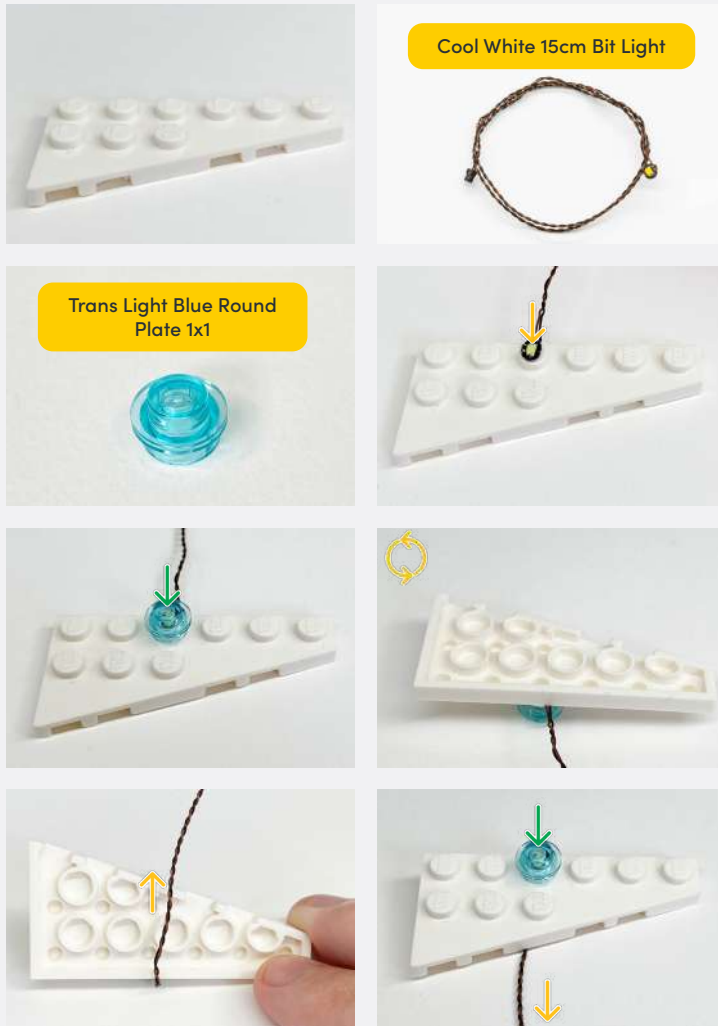
Legend → DISCONNECT → CONNECT / RECONNECT ↻ TURN / FLIP → DIRECTIONAL ↻ TWIST / BRAID * POWER ON TEST 📝 NOTE ICON

7

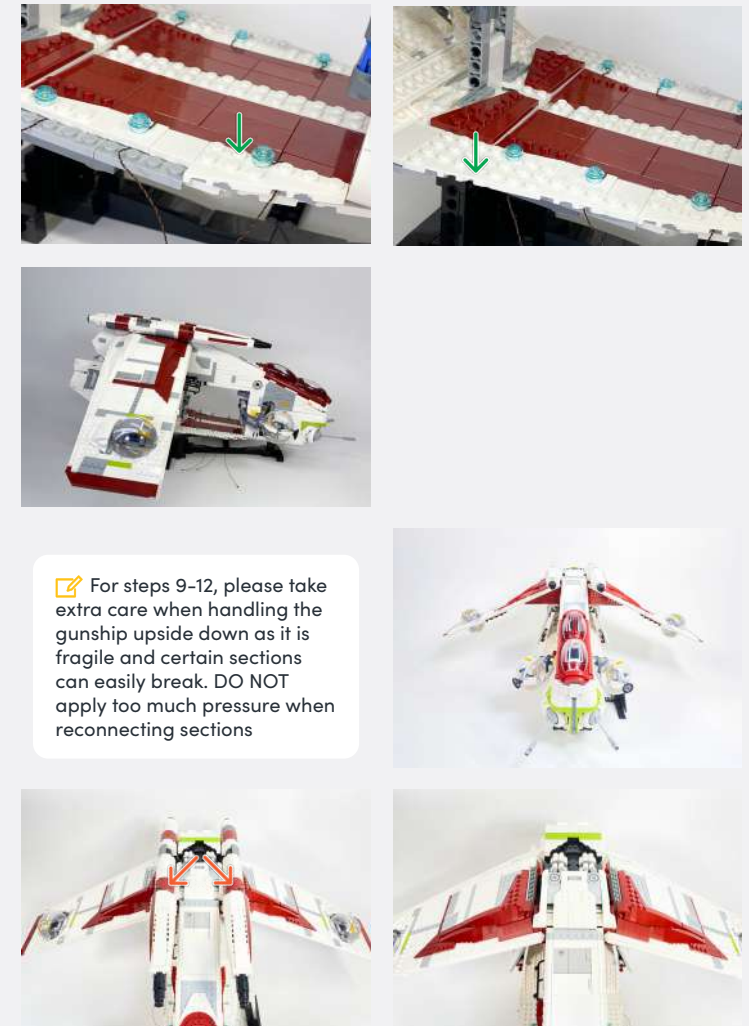


Legend → DISCONNECT → CONNECT / RECONNECT ↻ TURN / FLIP → DIRECTIONAL ↻ TWIST / BRAID ✨ POWER ON TEST 📝 NOTE ICON

8



9



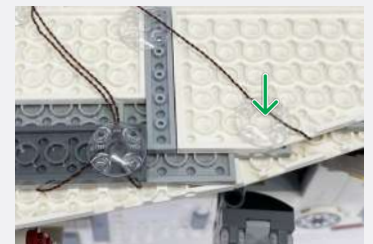
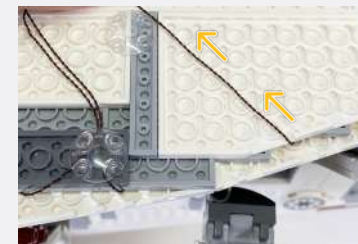
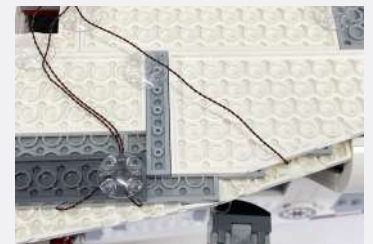
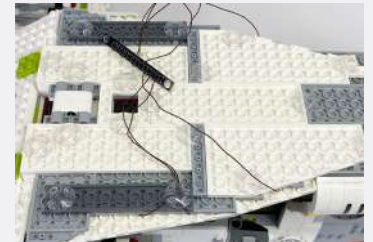
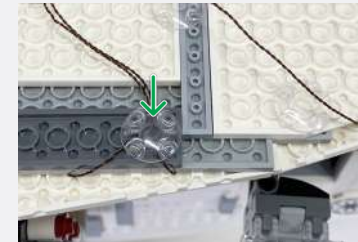
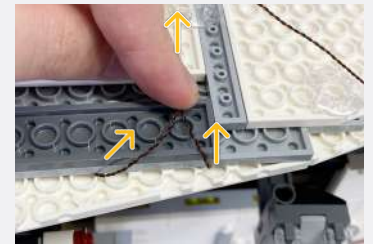
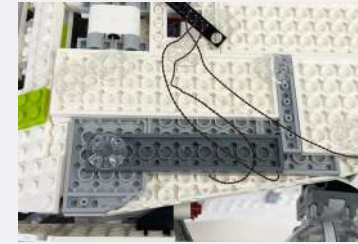
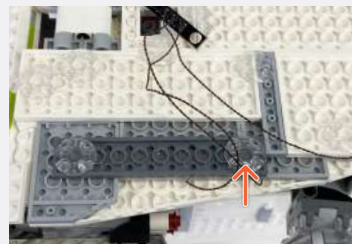
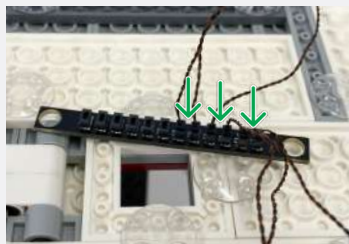
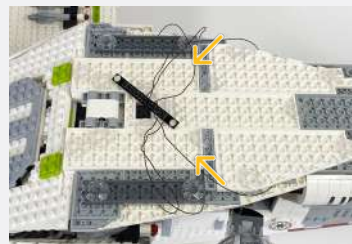
Legend



Use the stand to support the Gunship while flipped over.

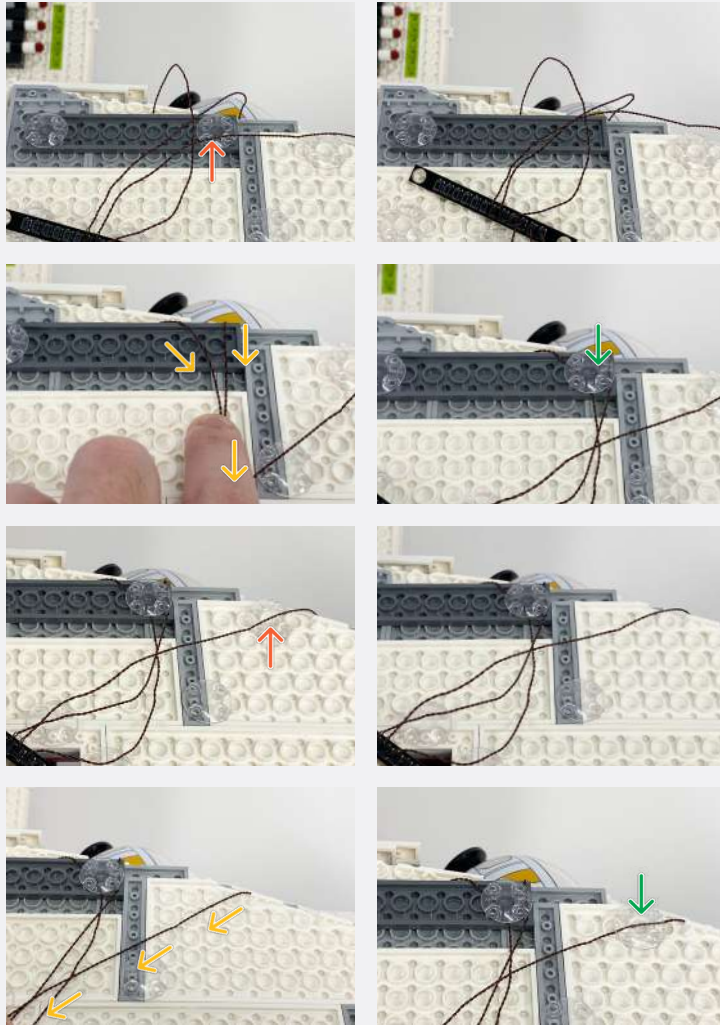


12-Port Expansion Board

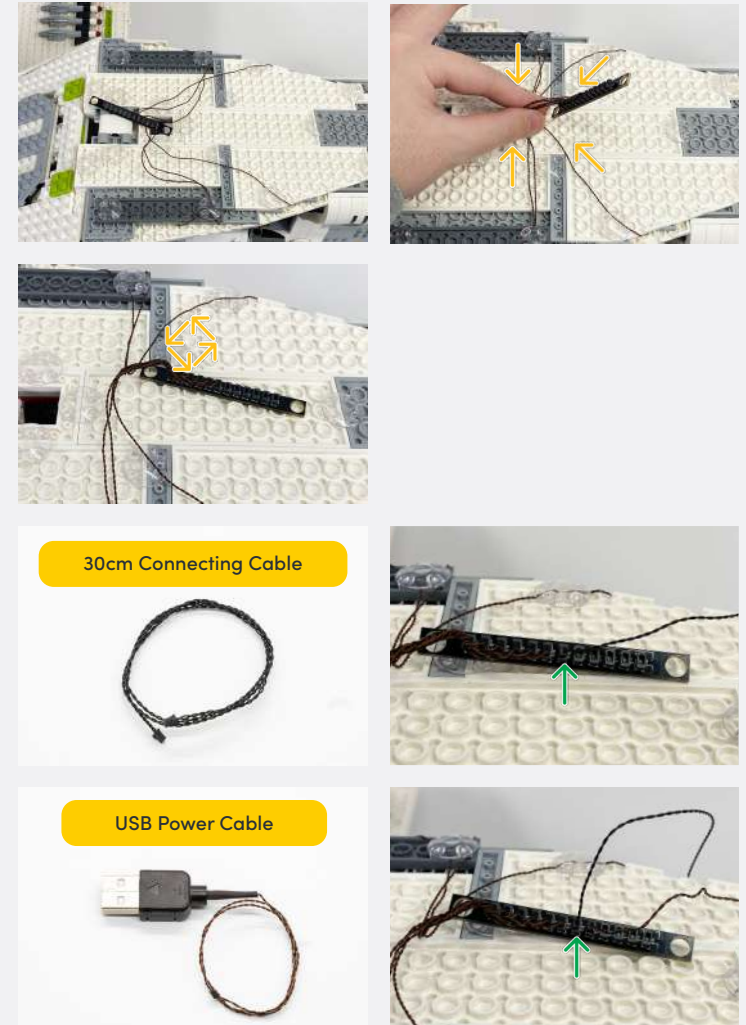


Legend → DISCONNECT → CONNECT / RECONNECT ↻ TURN / FLIP → DIRECTIONAL ↺ TWIST / BRAID * POWER ON TEST 📝 NOTE ICON

10



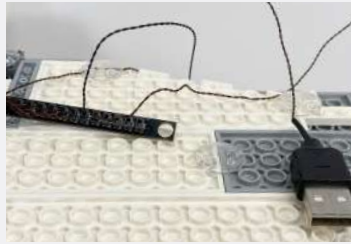
11



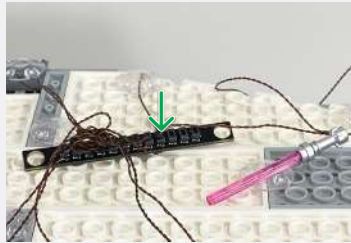
Legend

- DISCONNECT
- CONNECT / RECONNECT
- ↻ TURN / FLIP
- DIRECTIONAL
- ↻↻ TWIST / BRAID
- ✳ POWER ON TEST
- 📝 NOTE ICON

12



Purple/Dark Pink Lightsaber



2x Black Plate 1x2

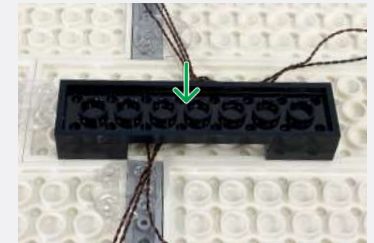
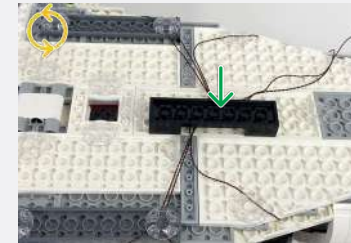
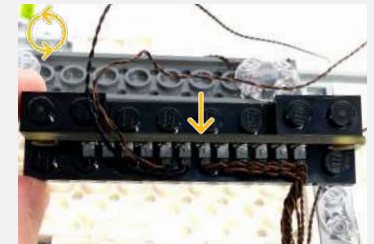


x2

Black Plate 2x8



13



Legend

- DISCONNECT
- CONNECT / RECONNECT
- TURN / FLIP
- DIRECTIONAL
- TWIST / BRAID
- POWER ON TEST
- NOTE ICON

📌 If you experience any issues with the lights not working and suspect an issue with a component, please try a different port on the expansion board to verify where the fault lies (with the light or expansion board). To correct any issues with expansion board ports, please view the section addressing expansion board issues in our troubleshooting section.



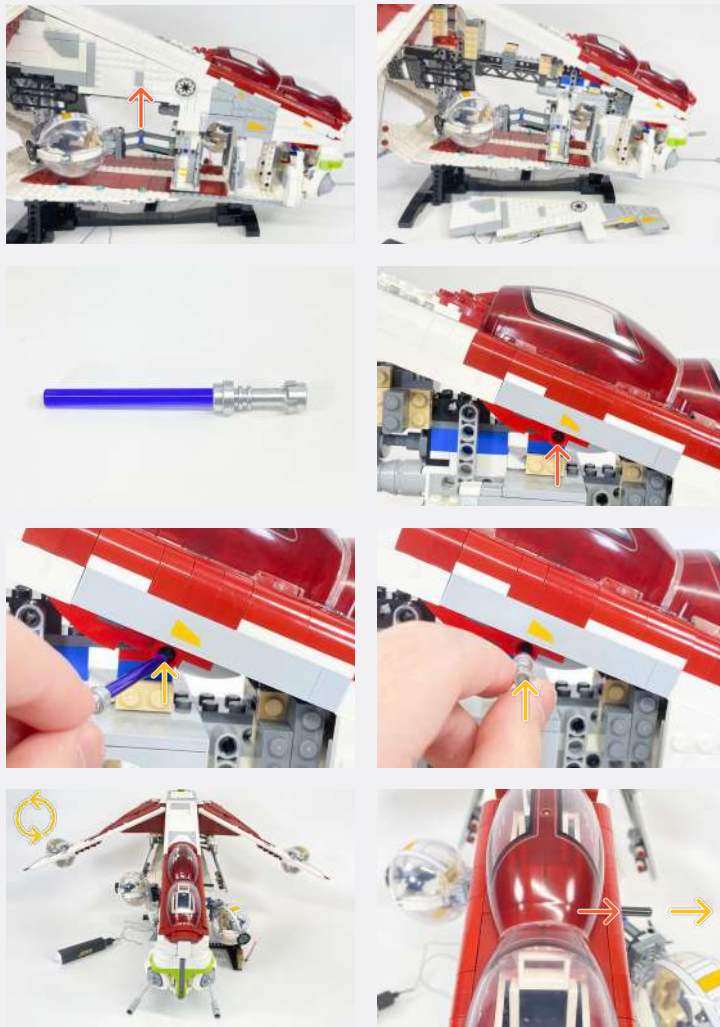
📌 Connect to a USB, Power Bank, USB to AA Battery Pack or USB Wall Adaptor (each sold separately)

14

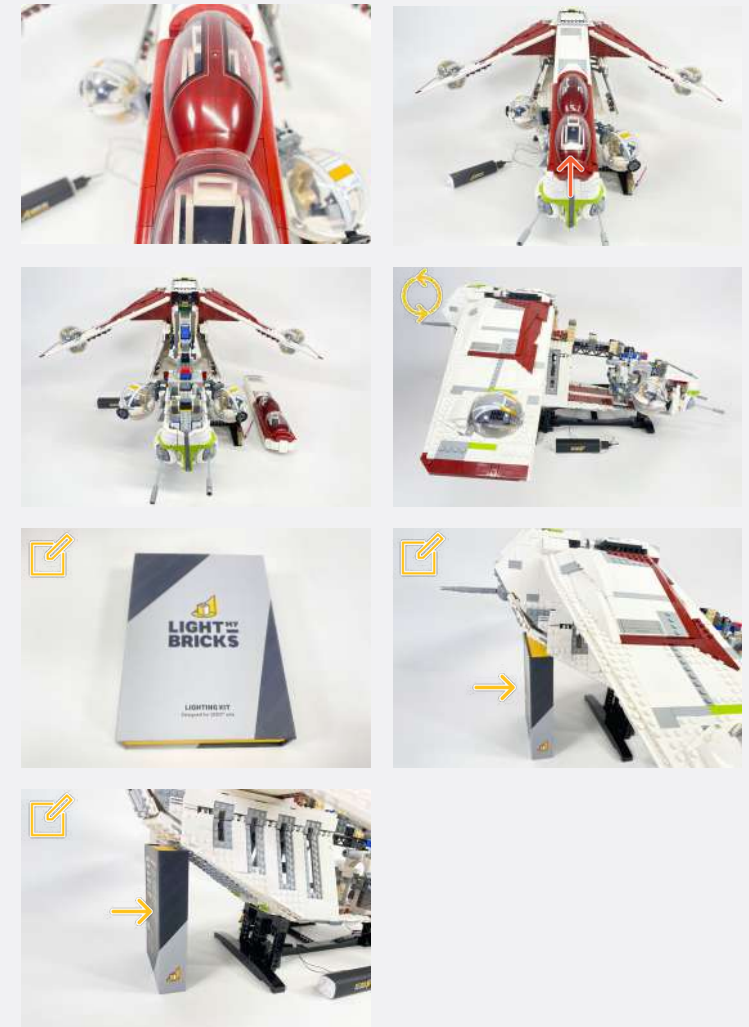


Legend → DISCONNECT → CONNECT / RECONNECT ↻ TURN / FLIP → DIRECTIONAL ↺ TWIST / BRAID ✨ POWER ON TEST 📌 NOTE ICON

15

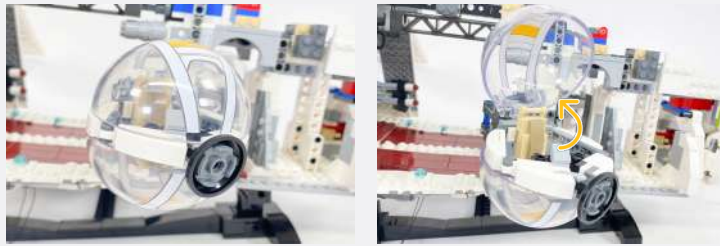


☑ Prop the Light My Bricks Box underneath the rear end to support the Gunship from falling back

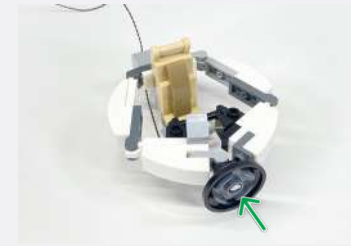
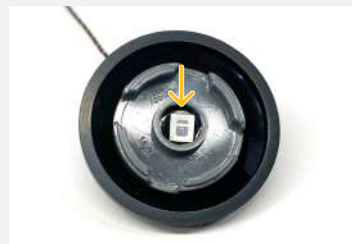
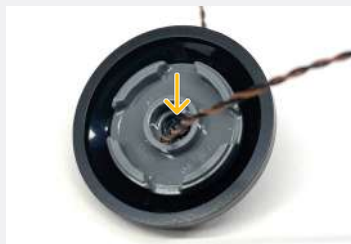
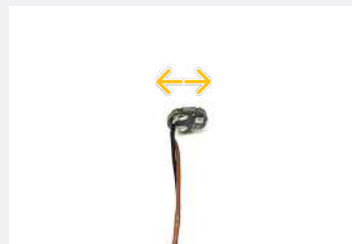


Legend → DISCONNECT → CONNECT / RECONNECT ↻ TURN / FLIP → DIRECTIONAL ↻ TWIST / BRAID * POWER ON TEST ☑ NOTE ICON

16



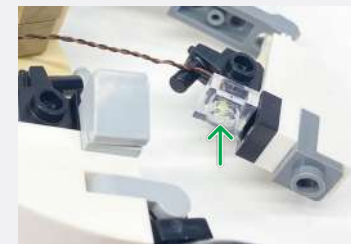
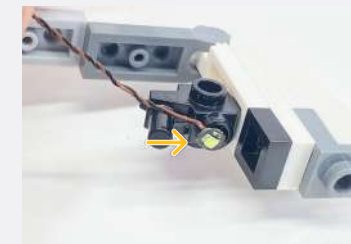
Green 30cm Large Bit Light



Cool White 30cm Bit Light

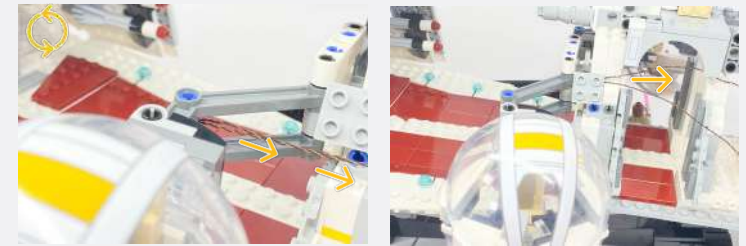
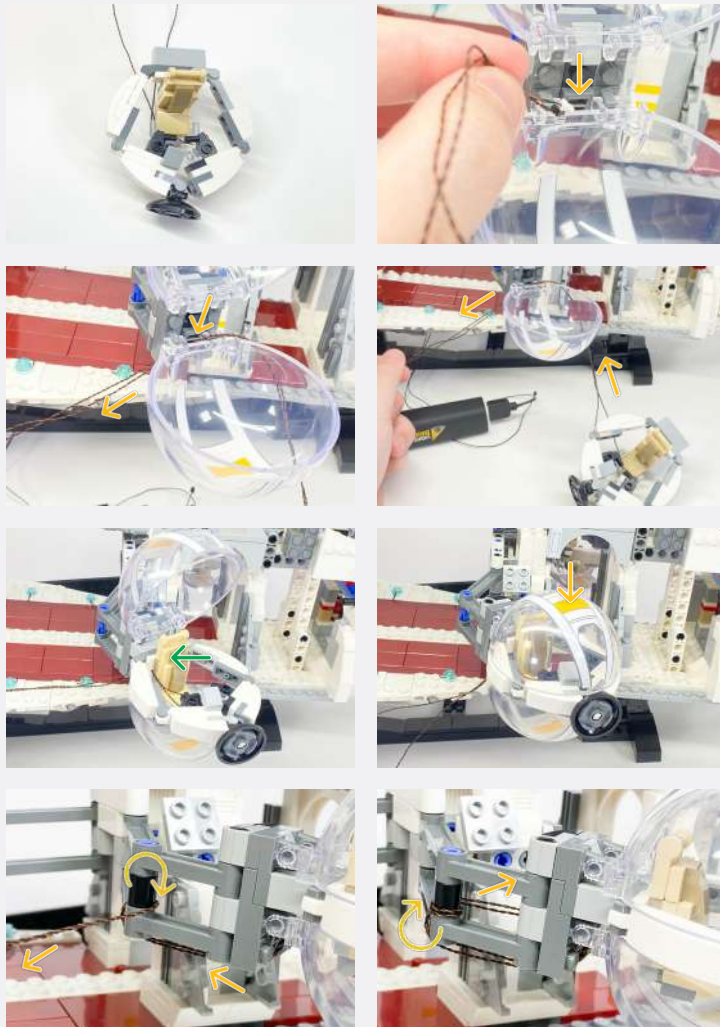


Trans Clear Plate 1x1




Legend → DISCONNECT → CONNECT / RECONNECT ↻ TURN / FLIP → DIRECTIONAL ↺ TWIST / BRAID * POWER ON TEST 📝 NOTE ICON

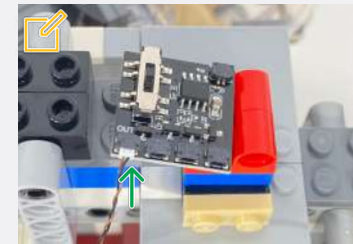
17



Gun Effects Board




 Connect the shorter cable (Large Green Bit Light) to the first 'OUT' port on the Gun Effects Board



8-Port Expansion Board



 Connect the longer cable (Cool White Bit Light) to the 8-Port Expansion Board



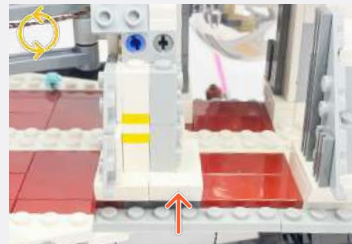
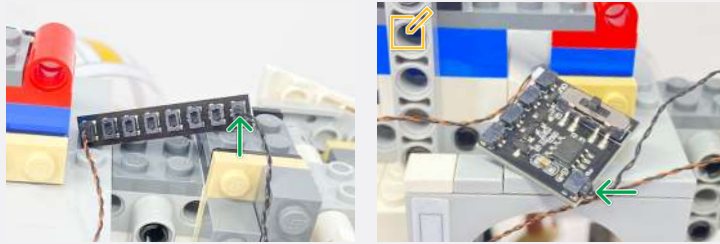
5cm Connecting Cable



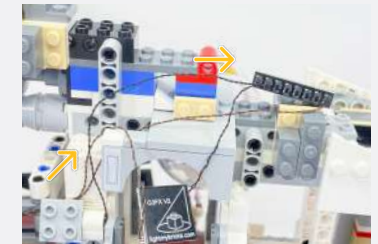
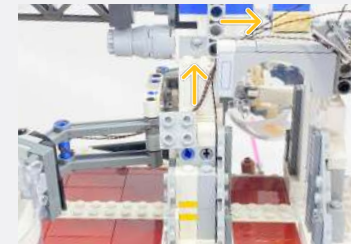
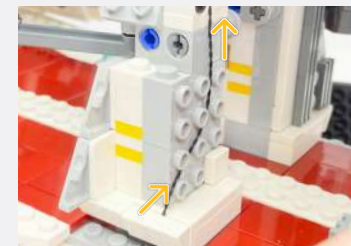
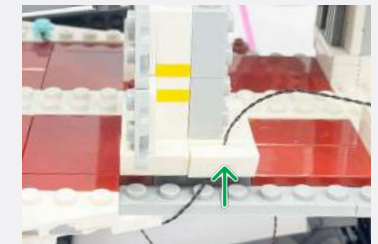
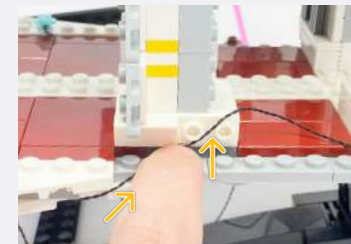
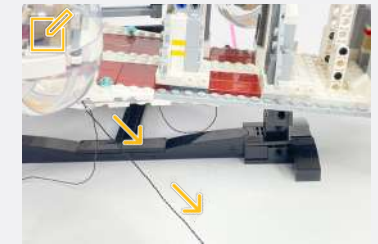
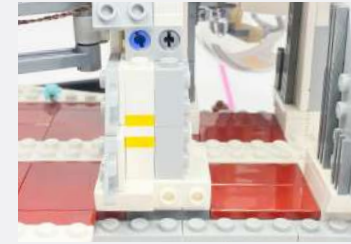
Legend

-  DISCONNECT
-  CONNECT / RECONNECT
-  TURN / FLIP
-  DIRECTIONAL
-  TWIST / BRAID
-  POWER ON TEST
-  NOTE ICON

✂ Connect the other end of the 5cm Connecting Cable to the IN port (+5V) of the Gun Effects Board



✂ Pull up the 30cm Connecting Cable from the underneath the Gunship (step. 11)

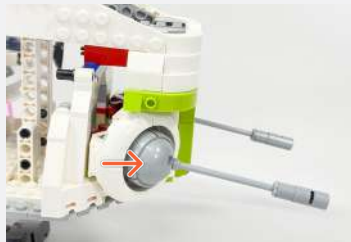
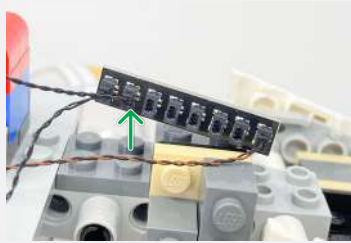


18

Legend

- DISCONNECT
- CONNECT / RECONNECT
- ↻ TURN / FLIP
- DIRECTIONAL
- ↻↻ TWIST / BRAID
- ✳ POWER ON TEST
- ✂ NOTE ICON

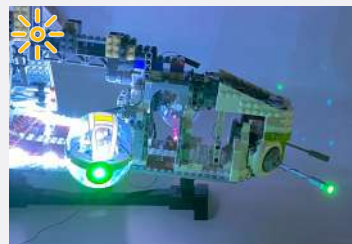
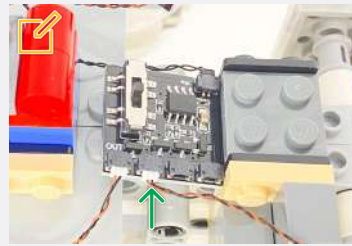
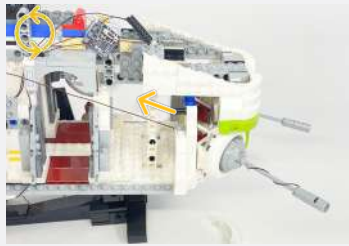
19



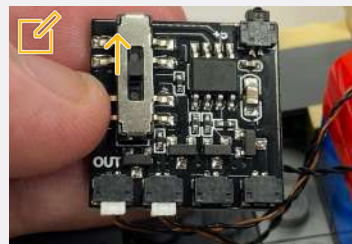
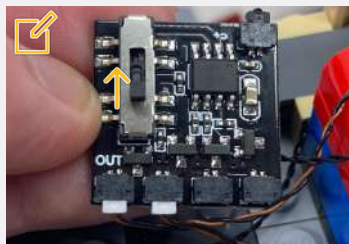
Legend → DISCONNECT → CONNECT / RECONNECT ↻ TURN / FLIP → DIRECTIONAL ↺ TWIST / BRAID * POWER ON TEST 📝 NOTE ICON

📌 If you experience any issues with the lights not working and suspect an issue with a component, please try a different port on the expansion board to verify where the fault lies (with the light or expansion board). To correct any issues with expansion board ports, please view the section addressing expansion board issues in our troubleshooting section.

📌 Connect the Green 30cm Large Bit Light to the second 'OUT' port on the Gun Effects Board

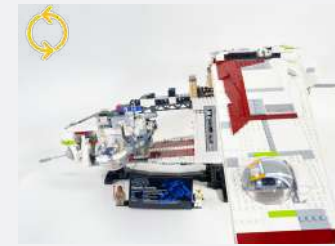


📌 You can choose between 3 different shooting effects via the 3 way switch on the Effects Board - Cannon, Machine Gun and Laser Gun



20

📌 Ensure the LMB Box is still supporting the Gunship

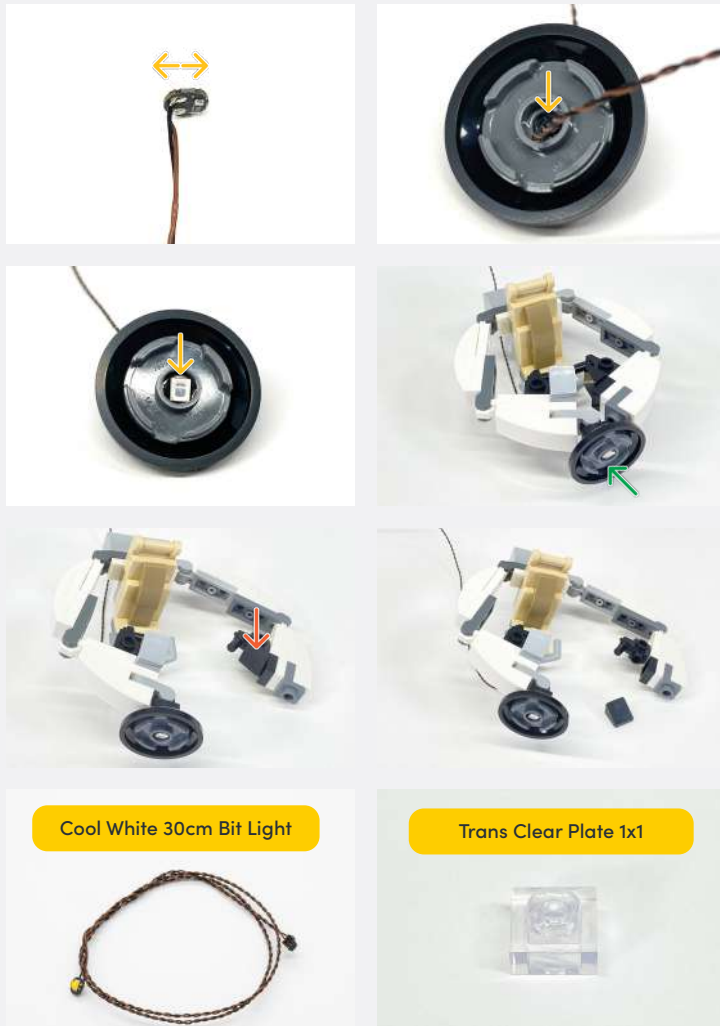


Green 30cm Large Bit Light

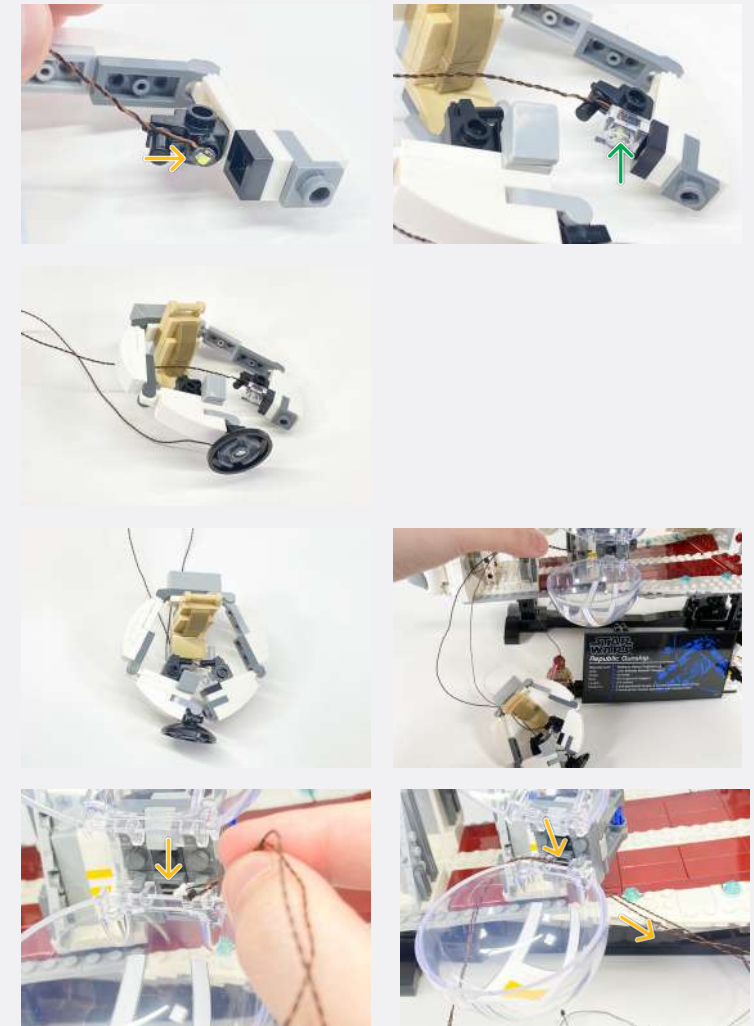


Legend

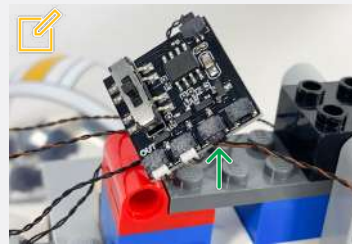
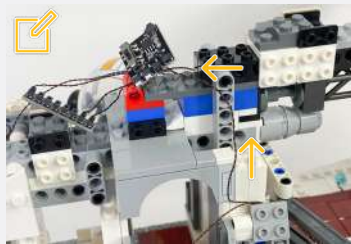
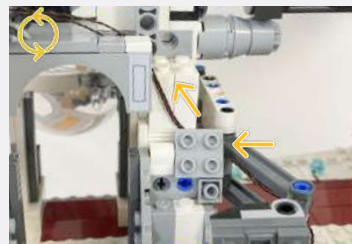
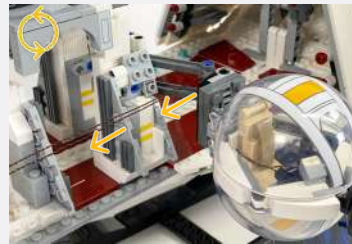
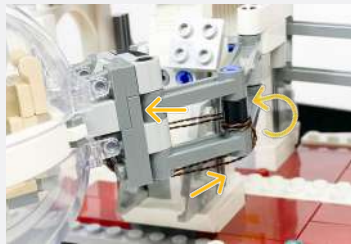
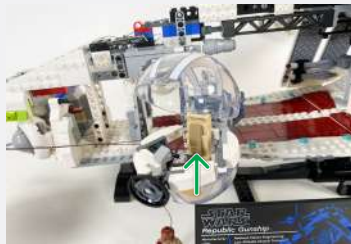
- DISCONNECT
- CONNECT / RECONNECT
- ↻ TURN / FLIP
- DIRECTIONAL
- ↻ TWIST / BRAID
- ☀ POWER ON TEST
- 📌 NOTE ICON



21



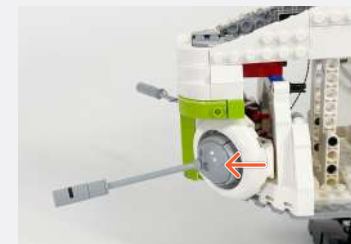
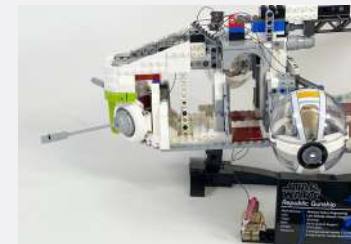
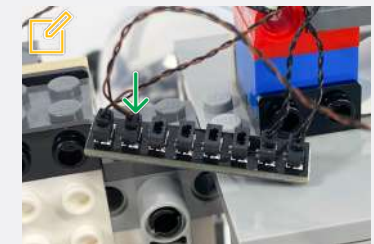
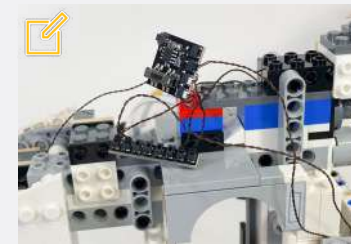
Legend → DISCONNECT → CONNECT / RECONNECT ↻ TURN / FLIP → DIRECTIONAL ↻ TWIST / BRAID * POWER ON TEST 📝 NOTE ICON



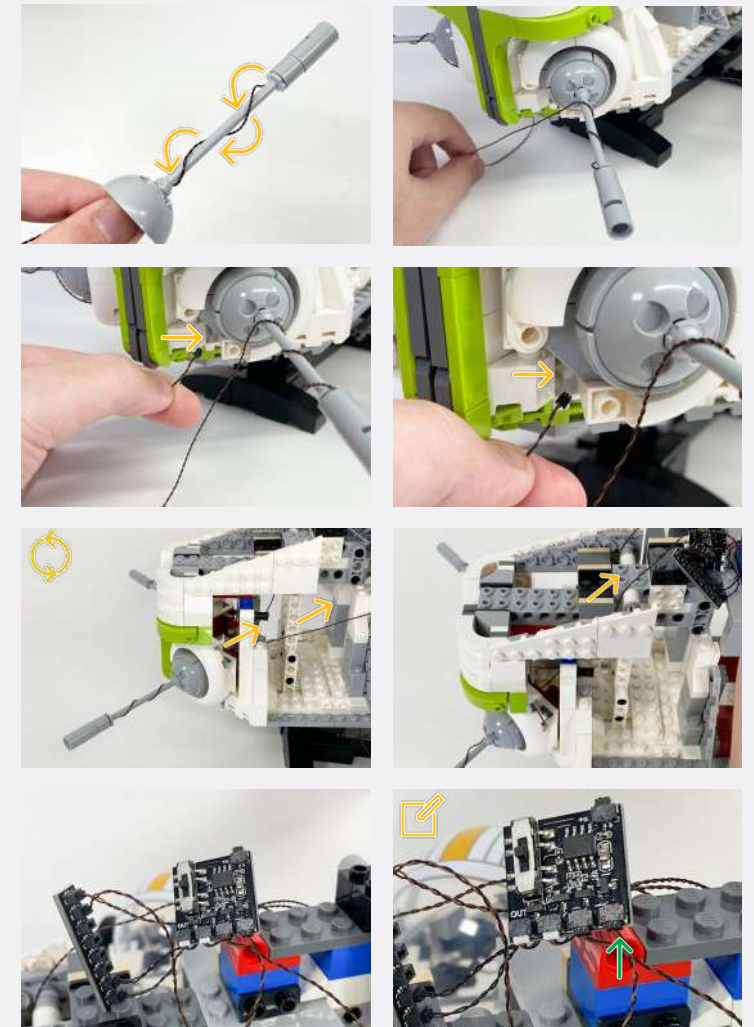
Connect the shorter cable (Large Green Bit Light) to the first 'OUT' port on the Gun Effects Board

Connect the longer cable (Cool White Bit Light) to the 8-Port Expansion Board

22



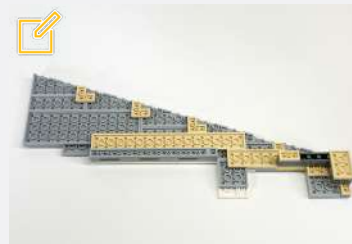
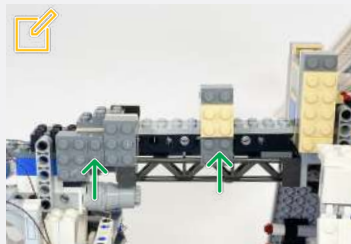
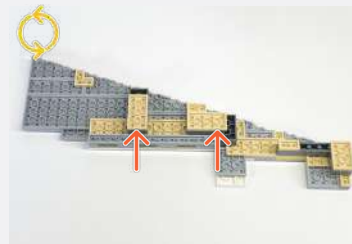
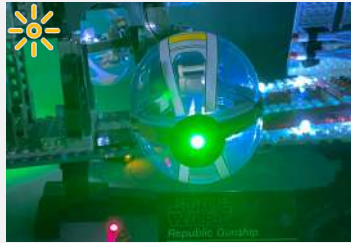
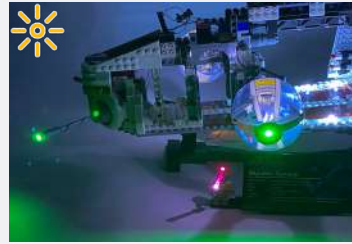
Legend → DISCONNECT → CONNECT / RECONNECT ↻ TURN / FLIP → DIRECTIONAL ↺ TWIST / BRAID * POWER ON TEST 📝 NOTE ICON



✂ Connect the Green 30cm Large Bit Light to the remaining 'OUT' port on the Gun Effects Board

Legend → DISCONNECT → CONNECT / RECONNECT ↻ TURN / FLIP → DIRECTIONAL ↺ TWIST / BRAID ✨ POWER ON TEST 📌 NOTE ICON

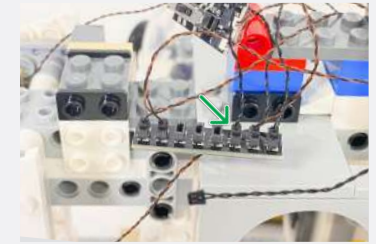
🔧 If you experience any issues with the lights not working and suspect an issue with a component, please try a different port on the expansion board to verify where the fault lies (with the light or expansion board). To correct any issues with expansion board ports, please view the section addressing expansion board issues in our troubleshooting section.



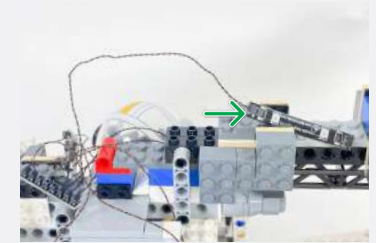
🔧 Ensure the middle structure of the Gunship as well as the inside of the panel look exactly as shown.

23

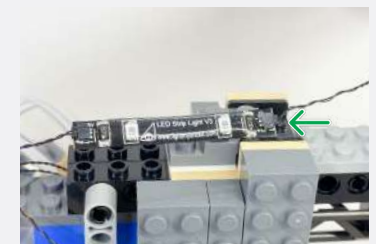
15cm Connecting Cable



Red Strip Light



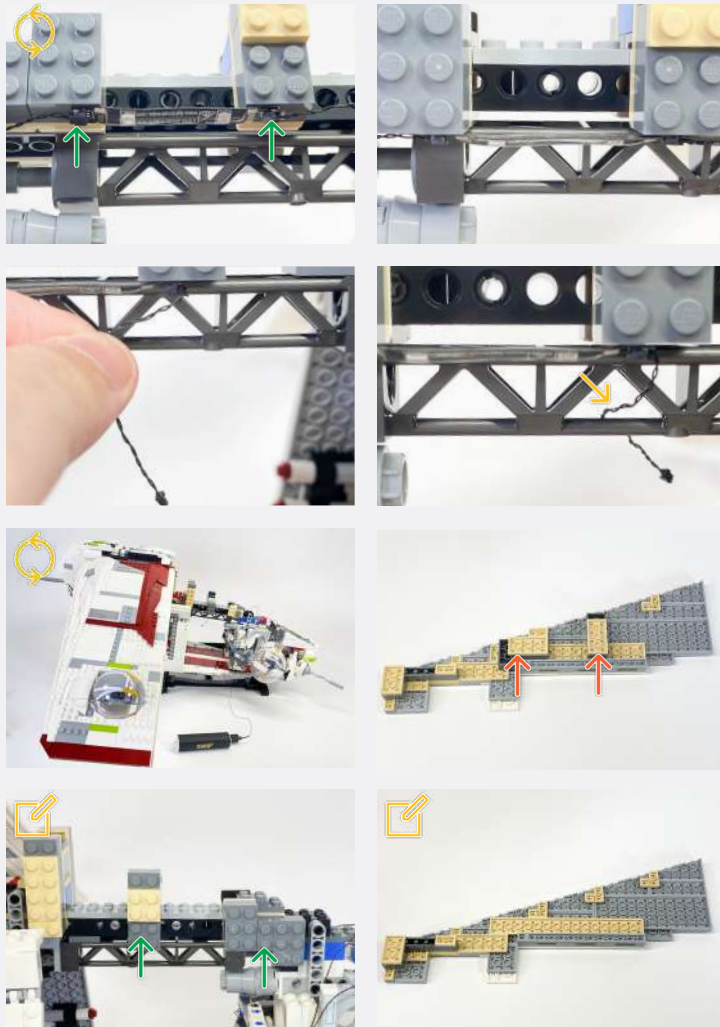
5cm Connecting Cable



Legend

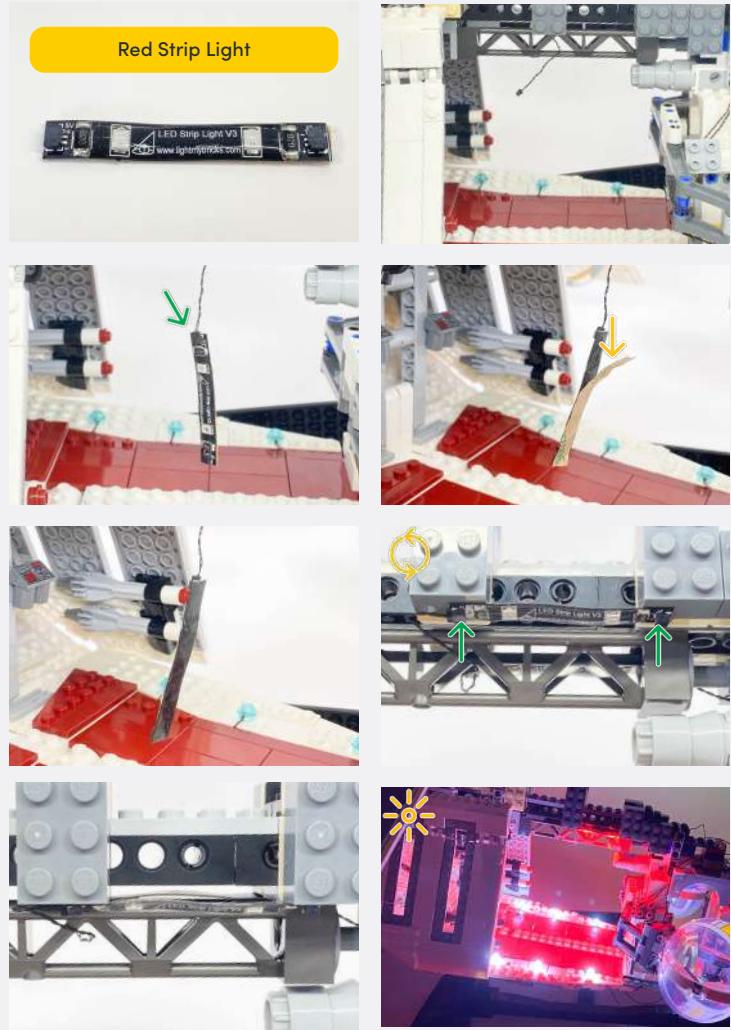
- DISCONNECT
- CONNECT / RECONNECT
- ↻ TURN / FLIP
- DIRECTIONAL
- ↻ TWIST / BRAID
- ☀️ POWER ON TEST
- 🔧 NOTE ICON

📌 If you experience any issues with the lights not working and suspect an issue with a component, please try a different port on the expansion board to verify where the fault lies (with the light or expansion board). To correct any issues with expansion board ports, please view the section addressing expansion board issues in our troubleshooting section.



24

📌 Ensure the middle structure of the Gunship as well as the inside of the panel look exactly as shown.



Red Strip Light

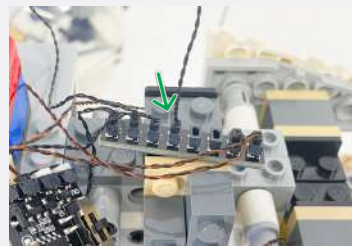
Legend

- DISCONNECT
- CONNECT / RECONNECT
- ↻ TURN / FLIP
- DIRECTIONAL
- ↻ TWIST / BRAID
- ☀️ POWER ON TEST
- 📌 NOTE ICON

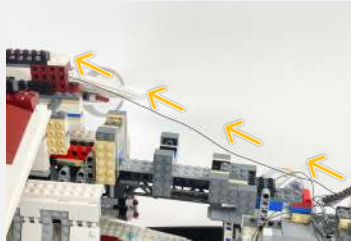
25



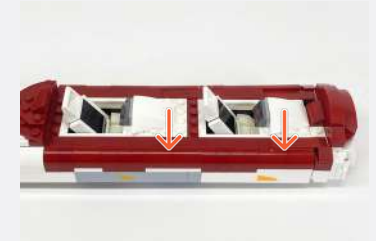
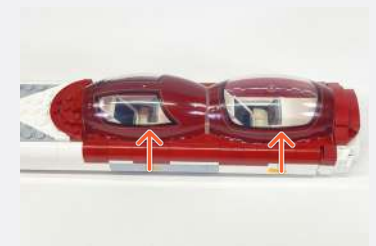
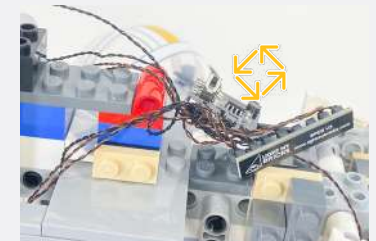
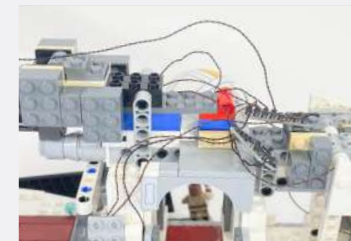
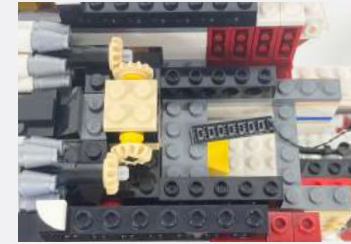
30cm Connecting Cable



8-Port Expansion Board

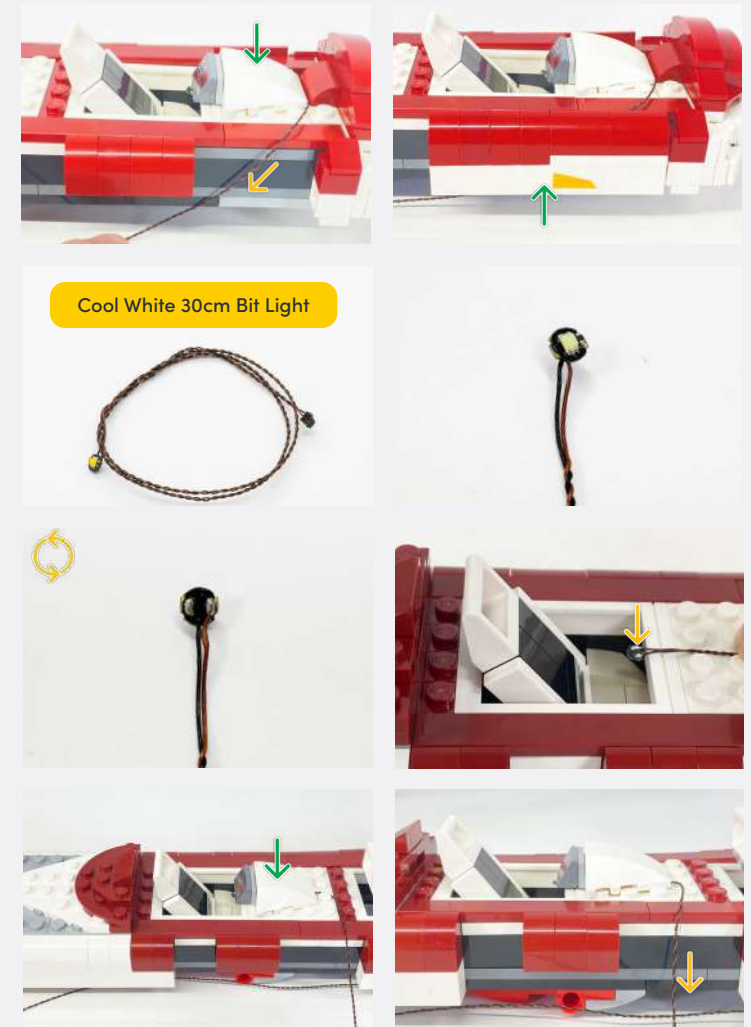
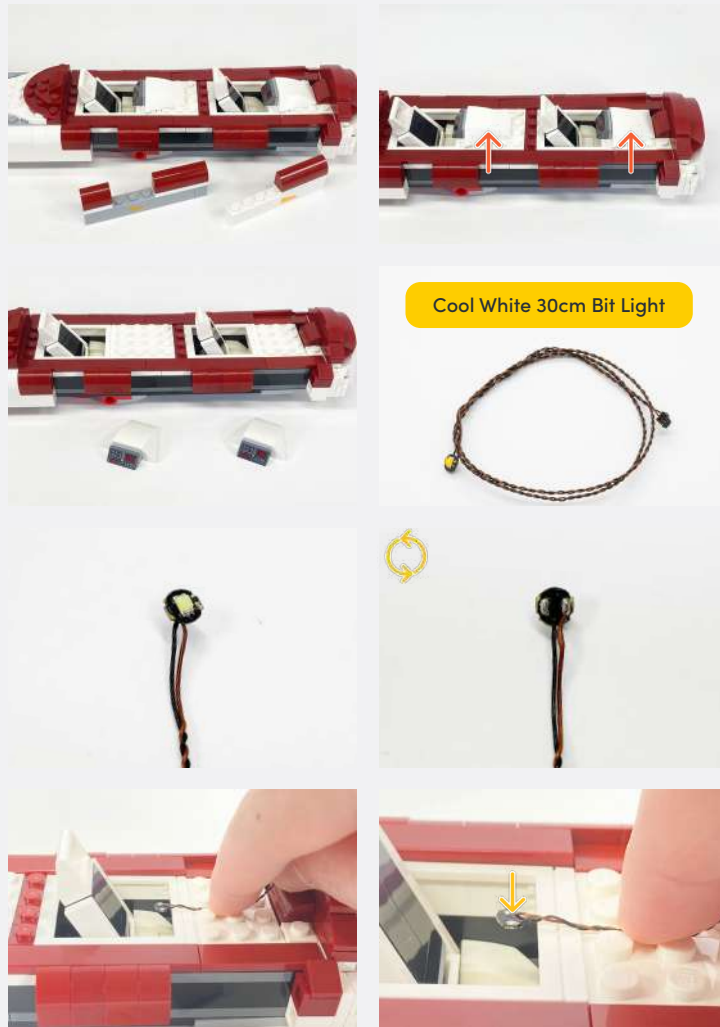


26



Legend

- DISCONNECT
- CONNECT / RECONNECT
- TURN / FLIP
- DIRECTIONAL
- TWIST / BRAID
- POWER ON TEST
- NOTE ICON

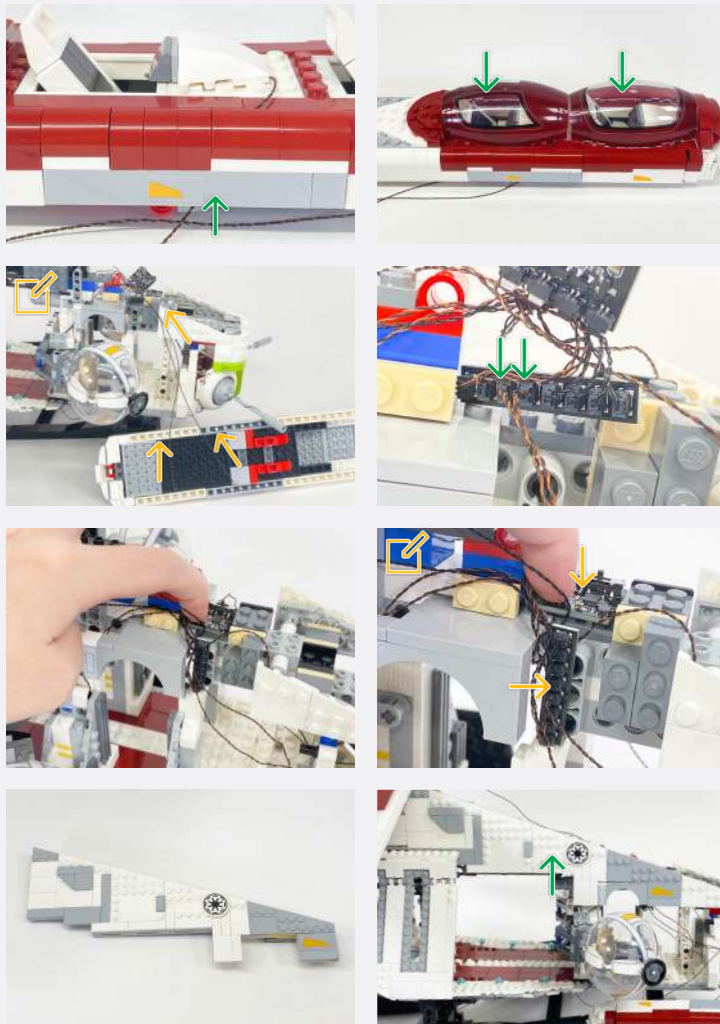


Legend → DISCONNECT → CONNECT / RECONNECT ↻ TURN / FLIP → DIRECTIONAL ↻ TWIST / BRAID ✨ POWER ON TEST 📝 NOTE ICON

27

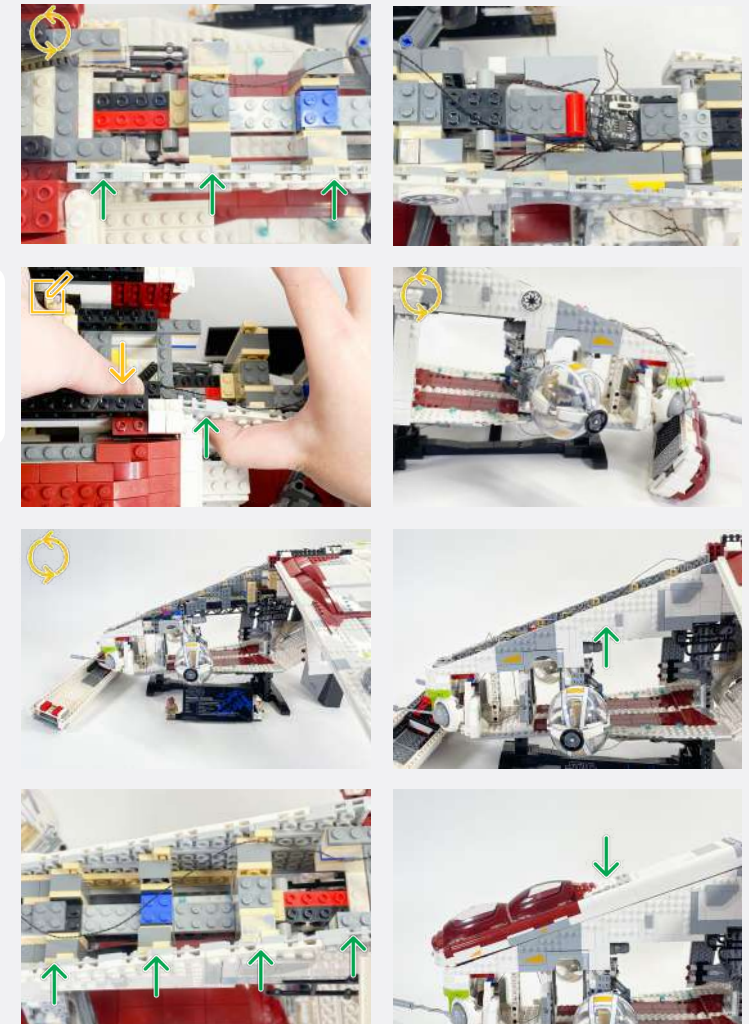
Connect the Bit Lights from the cockpit to the 8-Port Expansion Board from Step. 17

Place the two boards in the following position before reconnecting the



Push down on the following black bricks to allow for an easier reconnection of the left end of the panel section

28



Legend

- DISCONNECT
- CONNECT / RECONNECT
- TURN / FLIP
- DIRECTIONAL
- TWIST / BRAID
- POWER ON TEST
- NOTE ICON

If you experience any issues with the lights not working and suspect an issue with a component, please try a different port on the expansion board to verify where the fault lies (with the light or expansion board). To correct any issues with expansion board ports, please view the section addressing expansion board issues in our troubleshooting section.



Ensure the cockpit section is secured in place using the technic axle



Legend DISCONNECT CONNECT / RECONNECT TURN / FLIP DIRECTIONAL TWIST / BRAID POWER ON TEST NOTE ICON

29



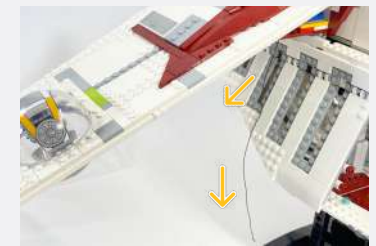
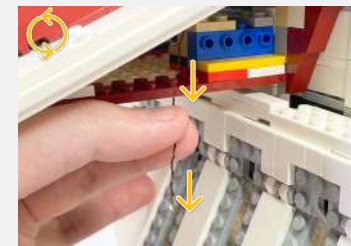
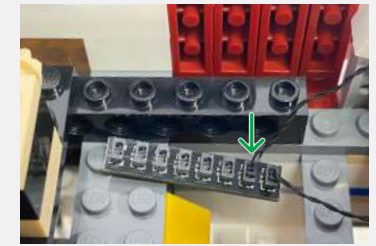
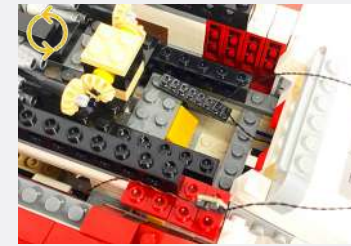
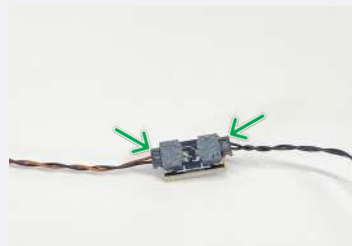
Cool White 30cm Bit Light



15cm Connecting Cable



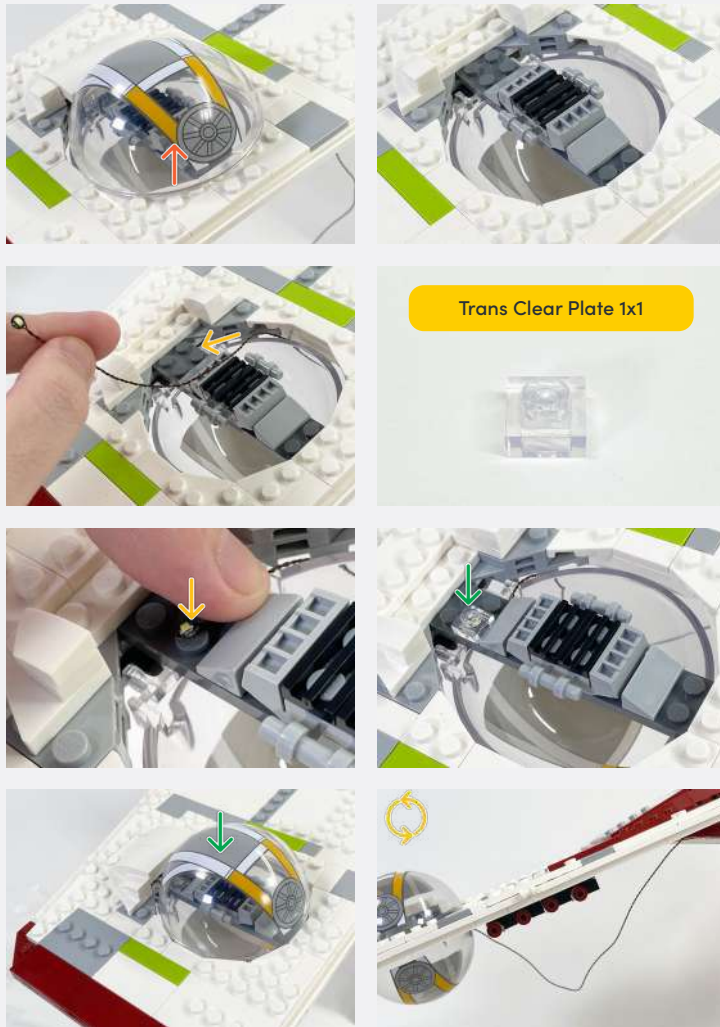
2-Port Expansion Board



Legend

- DISCONNECT
- CONNECT / RECONNECT
- TURN / FLIP
- DIRECTIONAL
- TWIST / BRAID
- POWER ON TEST
- NOTE ICON

30



Legend

-  DISCONNECT
-  CONNECT / RECONNECT
-  TURN / FLIP
-  DIRECTIONAL
-  TWIST / BRAID
-  POWER ON TEST
-  NOTE ICON

31



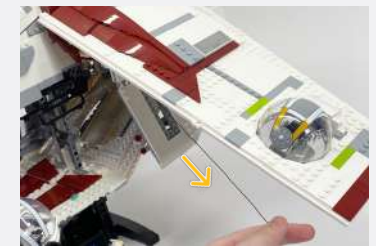
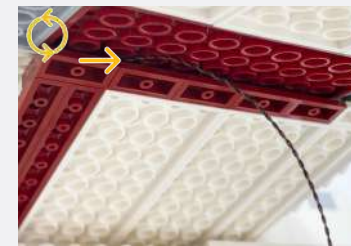
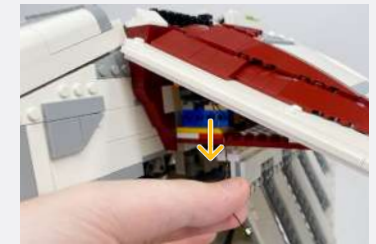
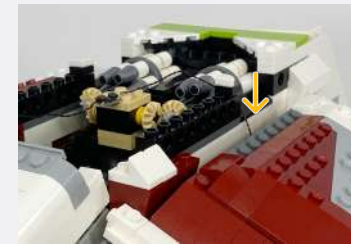
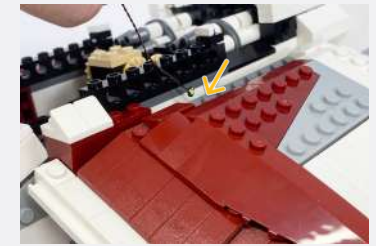
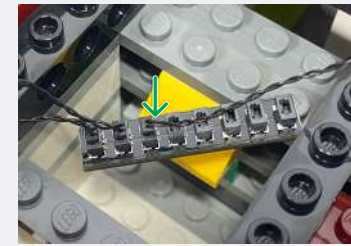
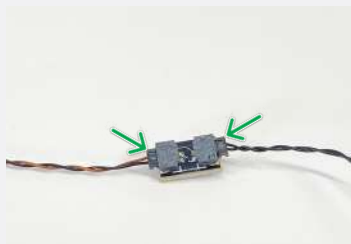
Cool White 30cm Bit Light



15cm Connecting Cable



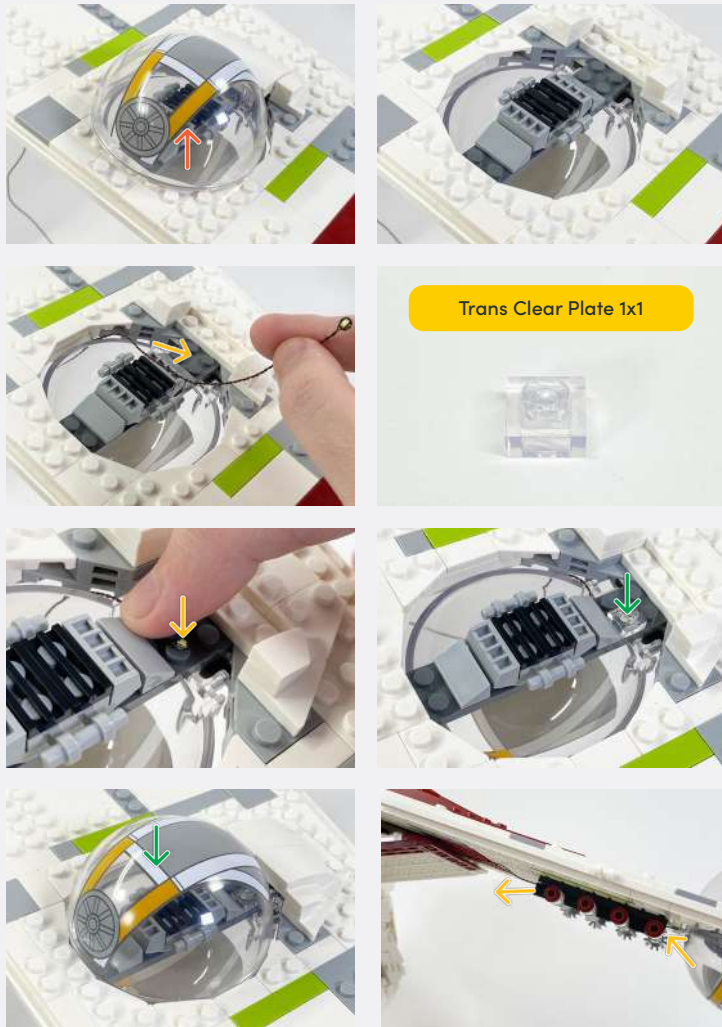
2-Port Expansion Board



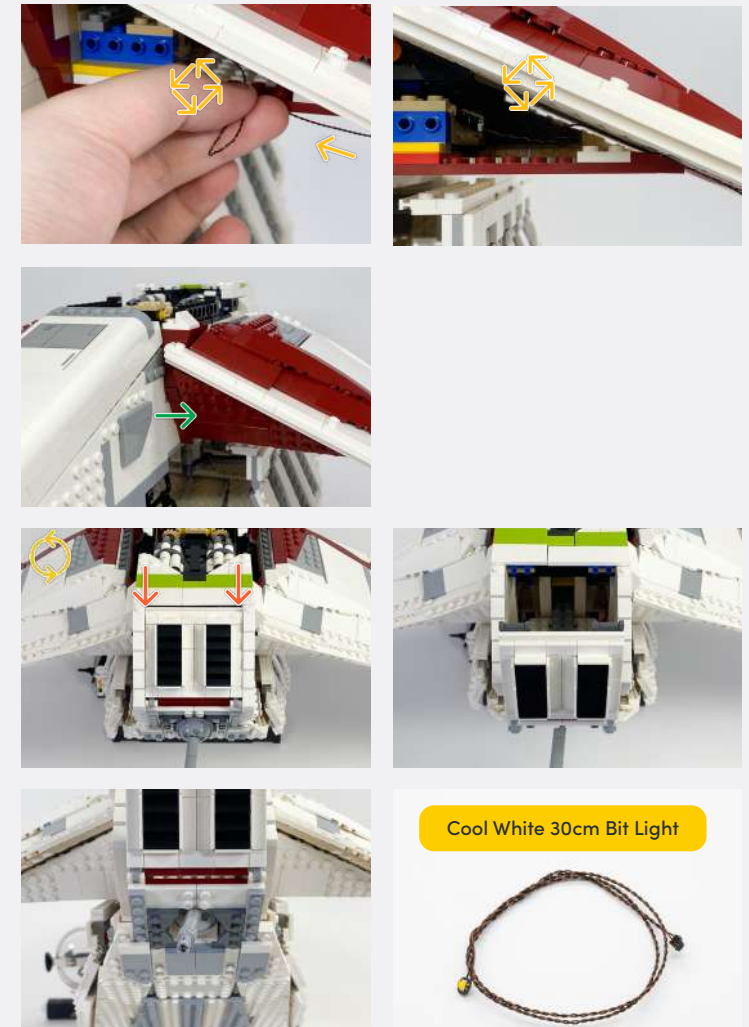
Legend

- DISCONNECT
- CONNECT / RECONNECT
- TURN / FLIP
- DIRECTIONAL
- TWIST / BRAID
- POWER ON TEST
- NOTE ICON

32

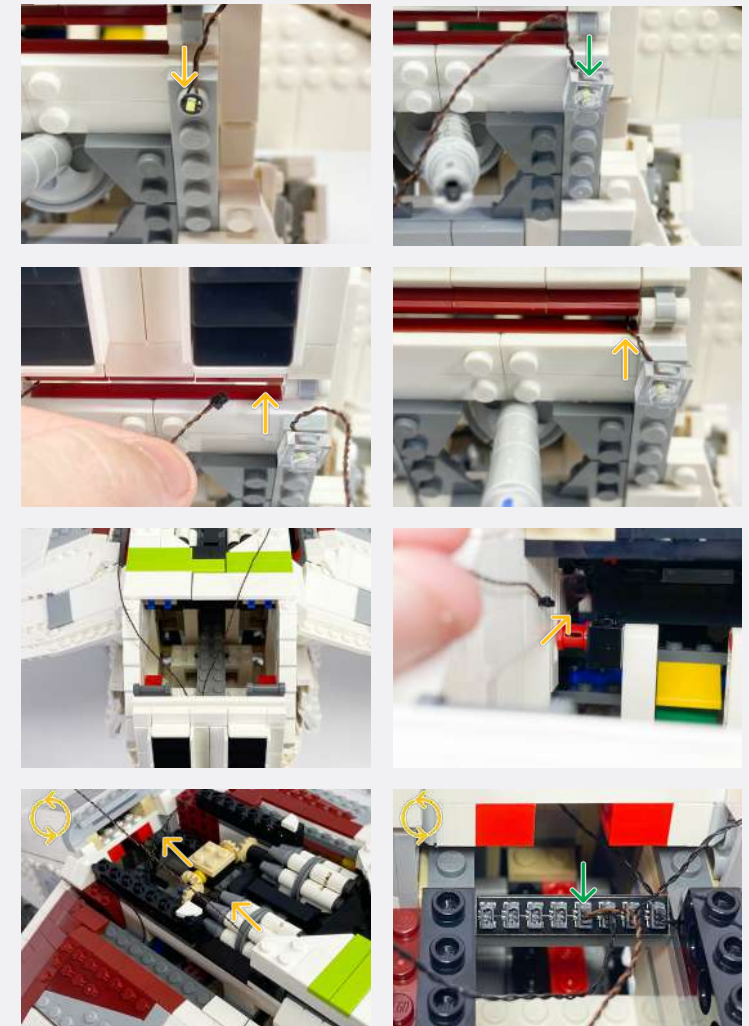
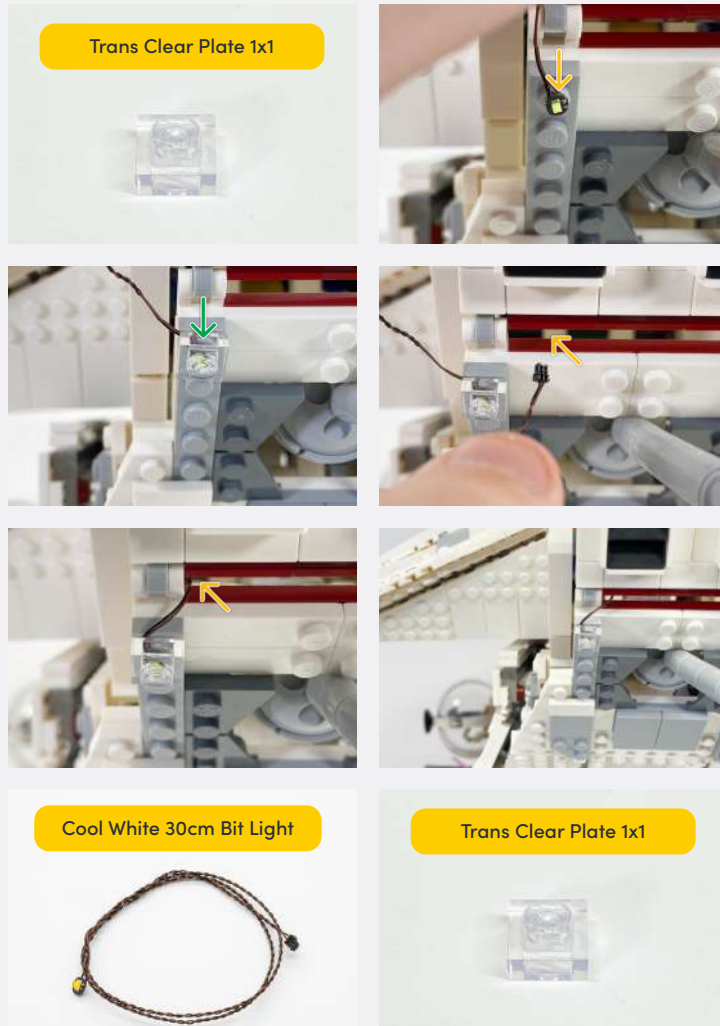


33



Legend

- DISCONNECT
- CONNECT / RECONNECT
- ↻ TURN / FLIP
- DIRECTIONAL
- ↻↻ TWIST / BRAID
- ✳ POWER ON TEST
- 📝 NOTE ICON

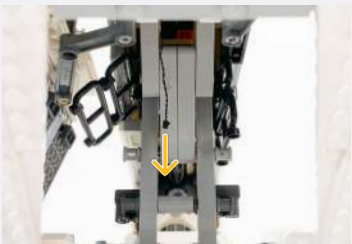
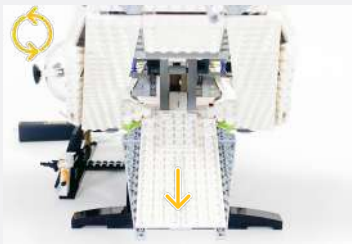
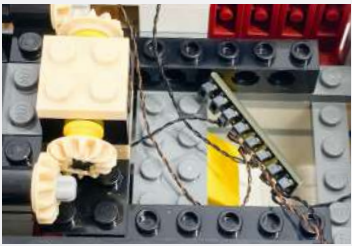
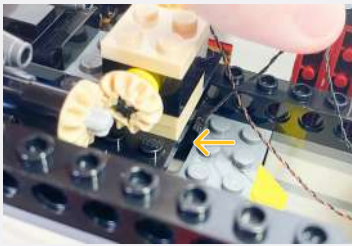
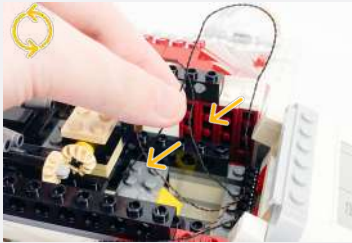
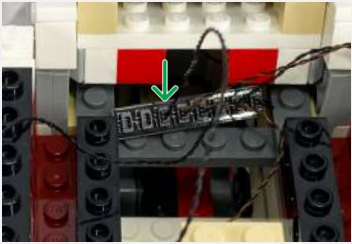


Legend

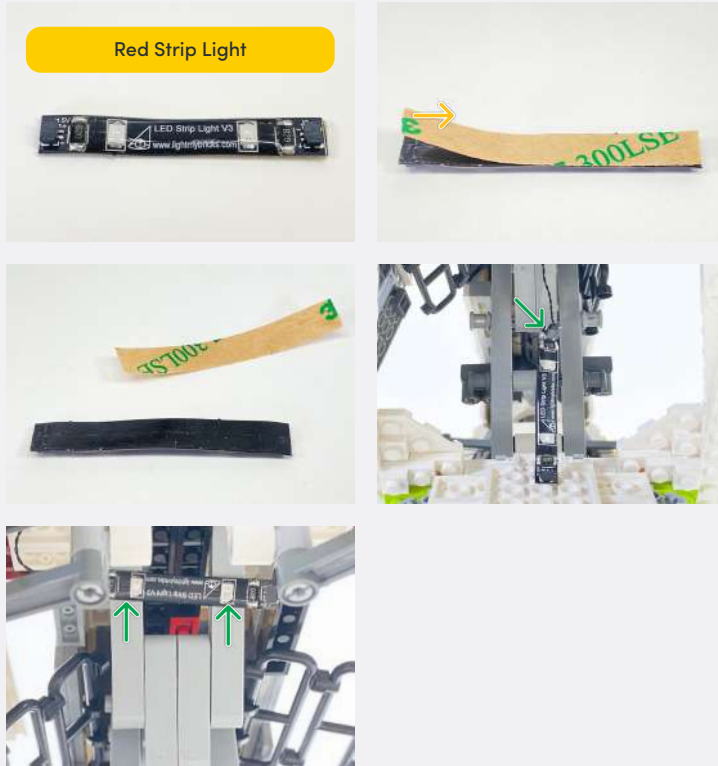
- DISCONNECT
- CONNECT / RECONNECT
- TURN / FLIP
- DIRECTIONAL
- TWIST / BRAID
- POWER ON TEST
- NOTE ICON



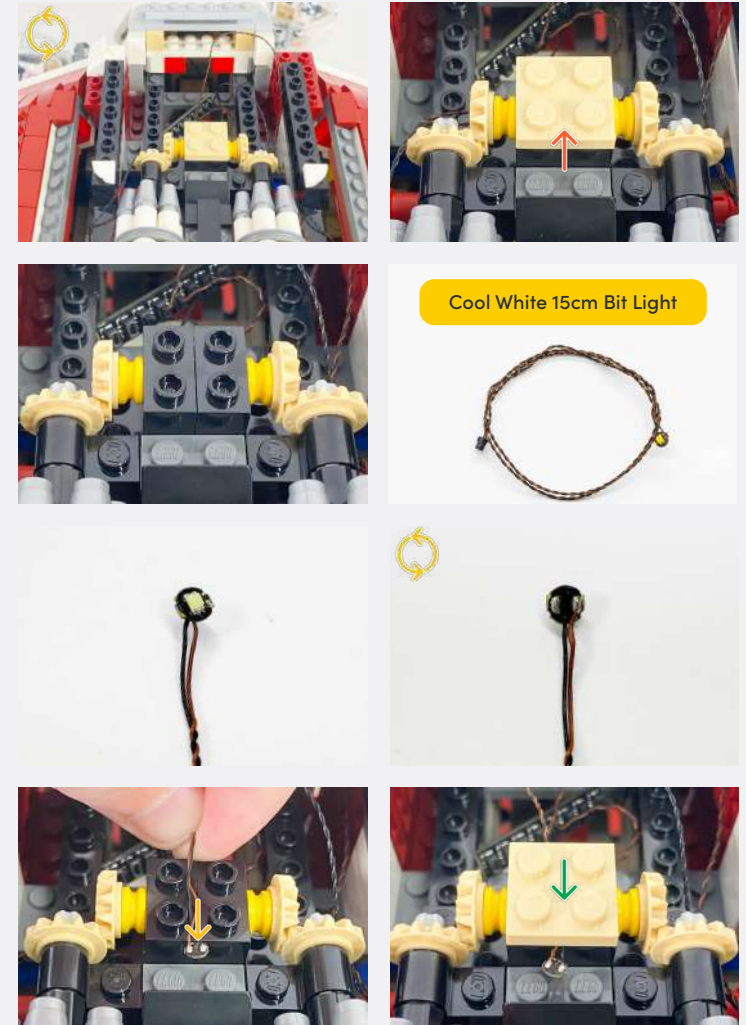
34



Legend → DISCONNECT → CONNECT / RECONNECT ↻ TURN / FLIP → DIRECTIONAL ↻ TWIST / BRAID ✨ POWER ON TEST 📝 NOTE ICON

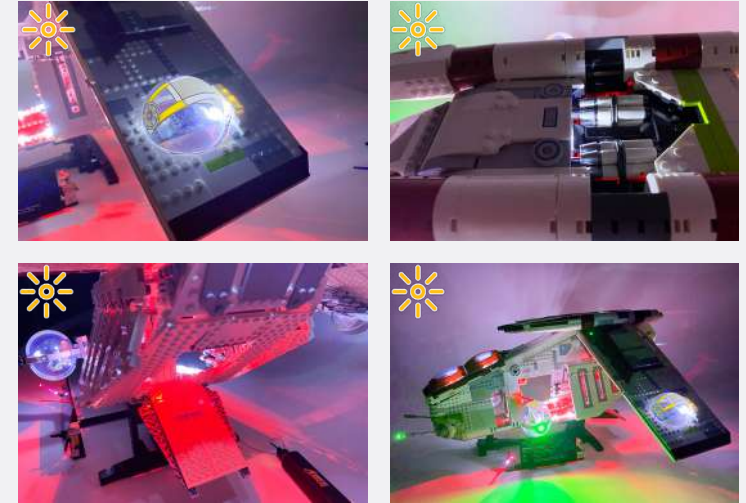


35



Legend → DISCONNECT → CONNECT / RECONNECT ↻ TURN / FLIP → DIRECTIONAL ↺ TWIST / BRAID ✨ POWER ON TEST 📝 NOTE ICON

If you experience any issues with the lights not working and suspect an issue with a component, please try a different port on the expansion board to verify where the fault lies (with the light or expansion board). To correct any issues with expansion board ports, please view the section addressing expansion board issues in our troubleshooting section.



Legend DISCONNECT CONNECT / RECONNECT TURN / FLIP DIRECTIONAL TWIST / BRAID POWER ON TEST NOTE ICON

FINAL PRODUCT

This finally completes installation of the Light My Bricks UCS Republic Gunship 75309 Light Kit.





TROUBLESHOOTING

Light My Bricks lighting kits contain individual components that are very small and can be easily damaged if not handled correctly.

To prevent unnecessary damage to components, we highly recommend that the User Guide section, **“Important things to note”** is read carefully. Follow the handling procedures in the User Guide to help prevent faults and damages to your Light My Bricks components.

If you are experiencing issues with your Light My Bricks set, watch our troubleshooting video [here](#) or read on for a list of common causes to help you troubleshoot.

Troubleshooting

Firstly, ensure that the batteries have power using a battery charge gauge.

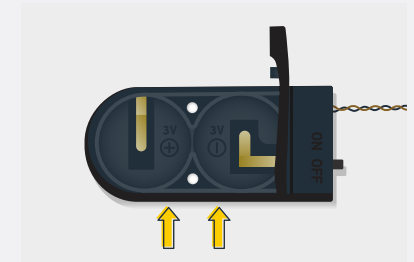
If the batteries have no power, replace the batteries.

If the batteries still have power, check to see if the batteries have been inserted correctly into the battery pack.

Check For CR2032 Batteries Using The Flat Battery Pack

Inside the battery pack is a symbol indicating which side the (round) CR2032 battery should be inserted. Check that the “+” side of the battery pack has the battery with the “+” symbol facing downwards.

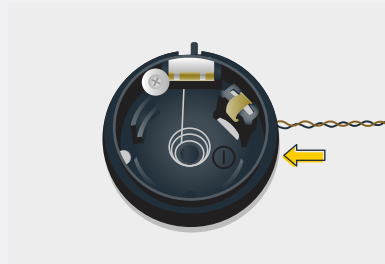
On the opposite side, the “-” side of the battery pack should have the battery flipped upside down, that is the “+” symbol facing upwards.



Troubleshooting

Check For Cr2032 Batteries Using The Round Battery Pack

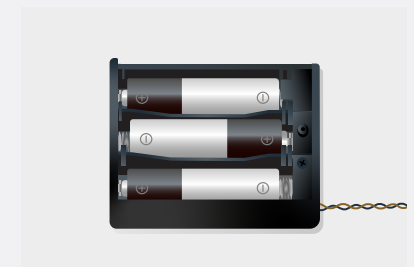
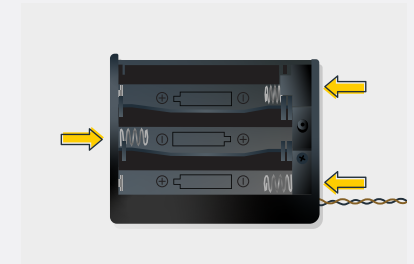
Inside the battery pack is a symbol indicating which side the (round) CR2032 battery should be inserted. In this case, for the stacked battery pack, ensure that BOTH batteries have the “+” symbol facing upwards.



Check for AA batteries using the AA battery pack

Inside the battery pack are symbols indicating which direction the AA battery should be inserted. The flat side of the battery should be paired with the spring side of the battery pack.

If the batteries have been installed correctly and your kit still isn't operating correctly, the next step is to check the wiring.



Troubleshooting

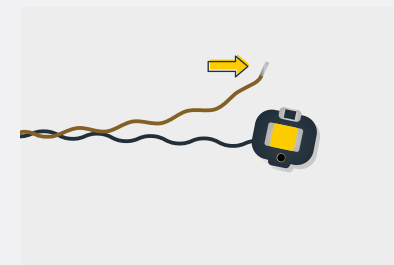
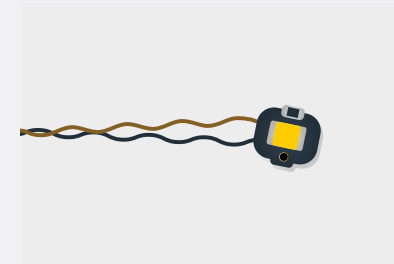
Check Your Wires

In order for Light My Bricks components to fit in between and underneath LEGO® bricks, the components need to be very small. Due to this nature, Light My Bricks components can be easily damaged when not handled correctly.

Be careful when removing unpacked components out of the packaging and ensure not to forcibly pull at the wires as this can damage the soldering that attach the wires to the LEDs.

If the wiring is detached from the LED itself, the light will not operate.

When connecting lights to your LEGO set, check that there are no pinched wires underneath or in between bricks and plates. When the wires are pinched and the exposed wires are touching each other, this can cause a crosswire and the lights to not function correctly.



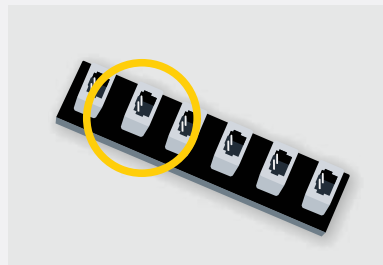
Troubleshooting

Check Your Expansion Board Ports/ Strip Light Ports / Effects Board Ports

It is important to note that connectors can only be inserted to the expansion board, strip light, or effects board ports in one direction.

Forcibly inserting connectors in the incorrect direction will result in damaging the pins inside each of the ports on your component board.

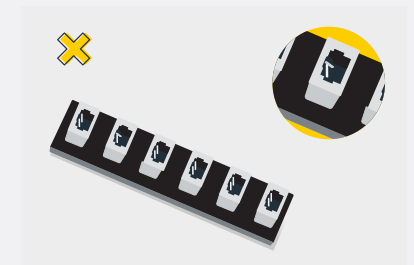
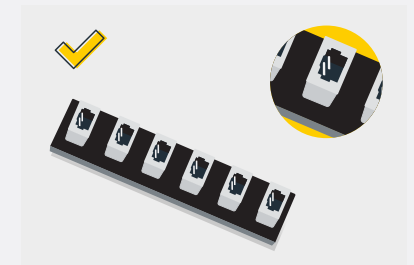
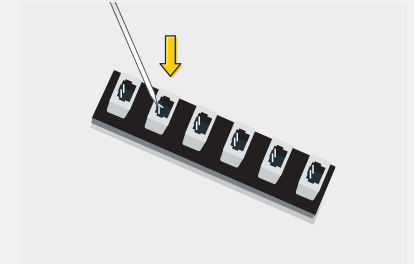
Not only will a light connected to the damaged port not work, but if the pins inside the port are bent to a point they are touching each other, this can result in all other lights in the system to stop working. This is a short circuit.



A short circuit can also result in overheating of the board, cable or batteries. If you suspect a short circuit, **DISCONNECT POWER IMMEDIATELY**. Batteries can fail, catch fire, or even explode if left connected to a short circuit for too long.

If you suspect you have a faulty component due to a bent pin, try the following steps:

If you look carefully inside each of the ports, each port contains 2 small pins that should be straight. You will be able to identify a faulty port if it has any bent pins.





CONTACT US

If you have an enquiry regarding the online shop, our products or a general enquiry please refer to our Frequently Asked Questions webpage here.

Alternatively, you can contact our Customer Services team by visiting our online support portal here.

support.lightmybricks.com

We thank you for purchasing this product and hope you enjoy!



lightmybricks.com

If you experience any issues with the lights not working and suspect an issue with a component, please try a different port on the expansion board to verify where the fault lies (with the light or expansion board). To correct any issues with expansion board ports, please view the section addressing expansion board issues in our troubleshooting section.

1

Note content goes here lorem ipsum dolor sit amet lorem ipsum dolor sit amet lorem ipsum dolor.

DESCRIPTION	



2

Legend

- DISCONNECT
- CONNECT / RECONNECT
- TURN / FLIP
- DIRECTIONAL
- TWIST / BRAID
- POWER ON TEST
- NOTE ICON

If you experience any issues with the lights not working and suspect an issue with a component, please try a different port on the expansion board to verify where the fault lies (with the light or expansion board). To correct any issues with expansion board ports, please view the section addressing expansion board issues in our troubleshooting section.

1

Note content goes here lorem ipsum dolor sit amet lorem ipsum dolor sit amet lorem ipsum dolor.

DESCRIPTION	



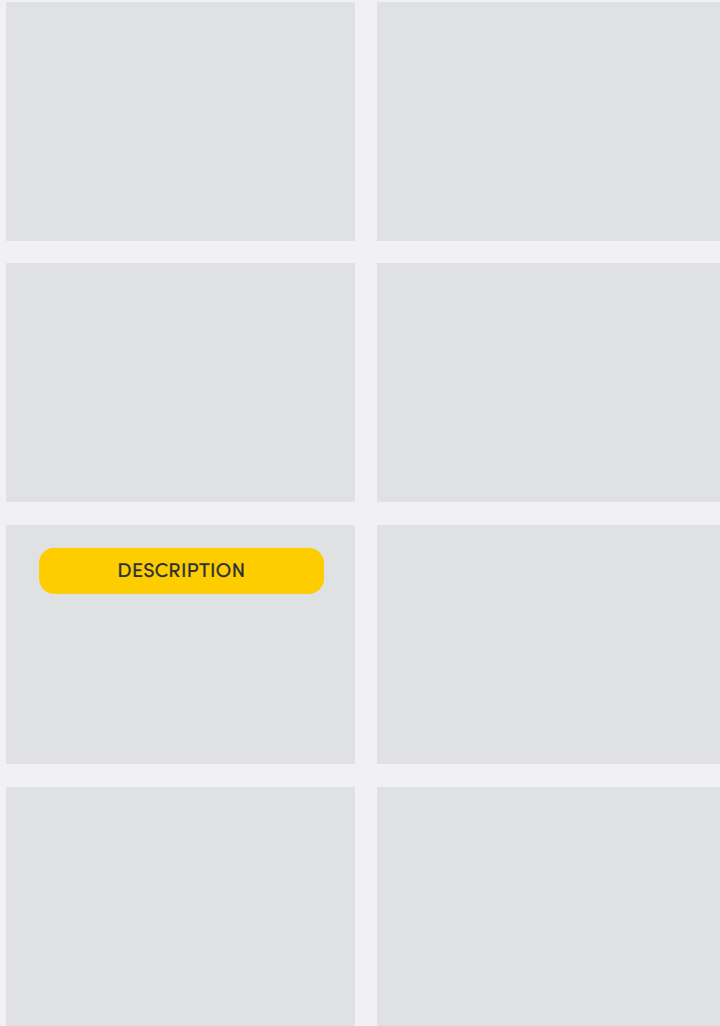
2

Legend

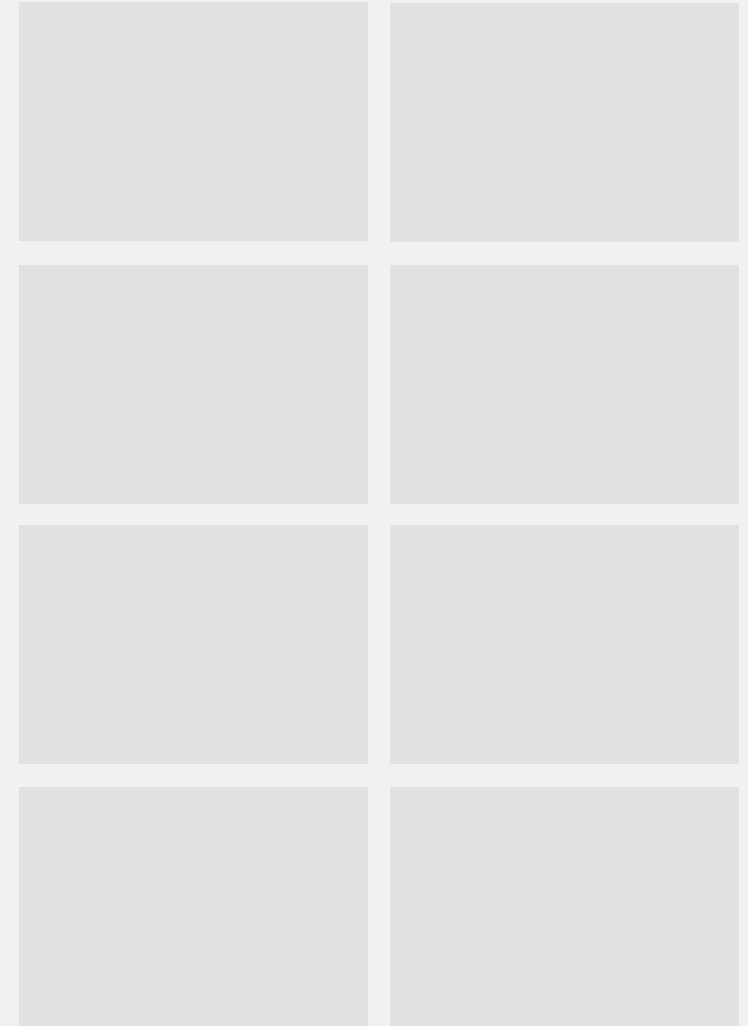
- DISCONNECT
- CONNECT / RECONNECT
- TURN / FLIP
- DIRECTIONAL
- TWIST / BRAID
- POWER ON TEST
- NOTE ICON

1

Note content goes here lorem ipsum dolor sit amet lorem ipsum dolor sit amet lorem ipsum dolor.



2

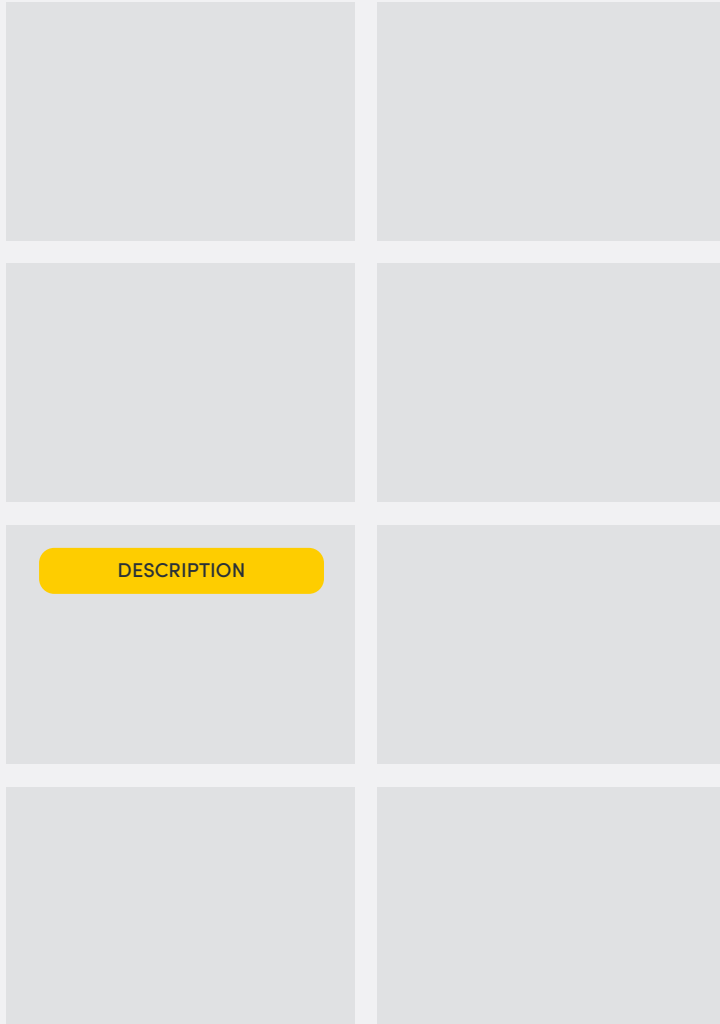


Legend

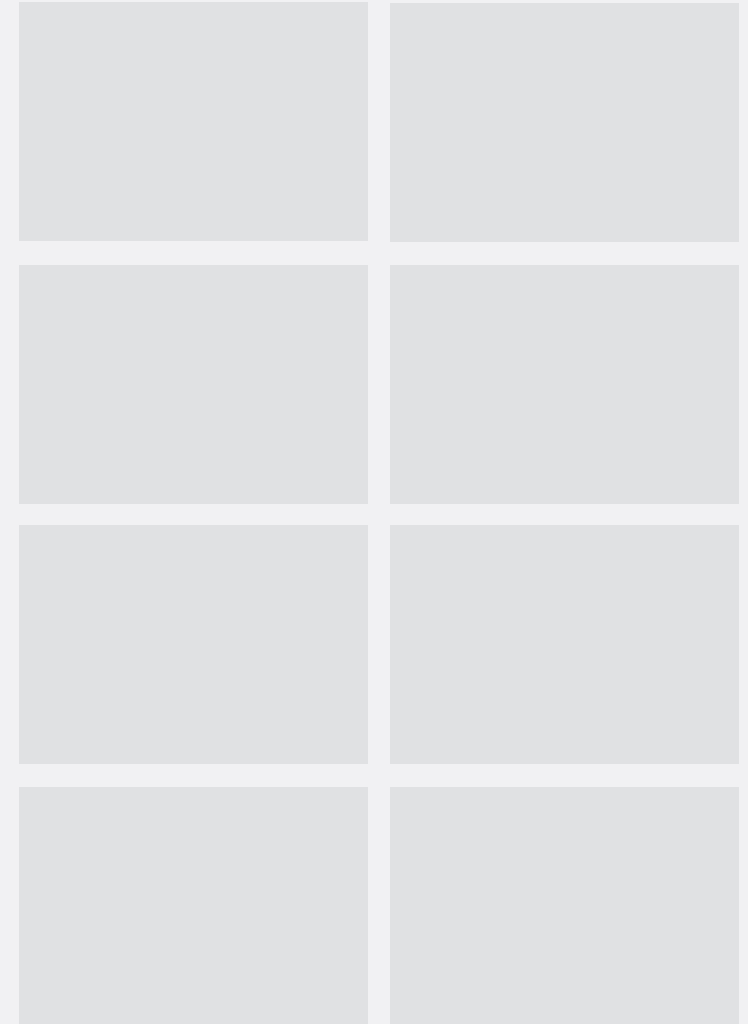
- DISCONNECT
- CONNECT / RECONNECT
- TURN / FLIP
- DIRECTIONAL
- TWIST / BRAID
- POWER ON TEST
- NOTE ICON

1

Note content goes here lorem ipsum dolor sit amet lorem ipsum dolor sit amet lorem ipsum dolor.



2



Legend

- DISCONNECT
- CONNECT / RECONNECT
- TURN / FLIP
- DIRECTIONAL
- TWIST / BRAID
- POWER ON TEST
- NOTE ICON

1



Note content goes here lorem ipsum dolor sit amet lorem ipsum dolor sit amet lorem ipsum dolor.



2



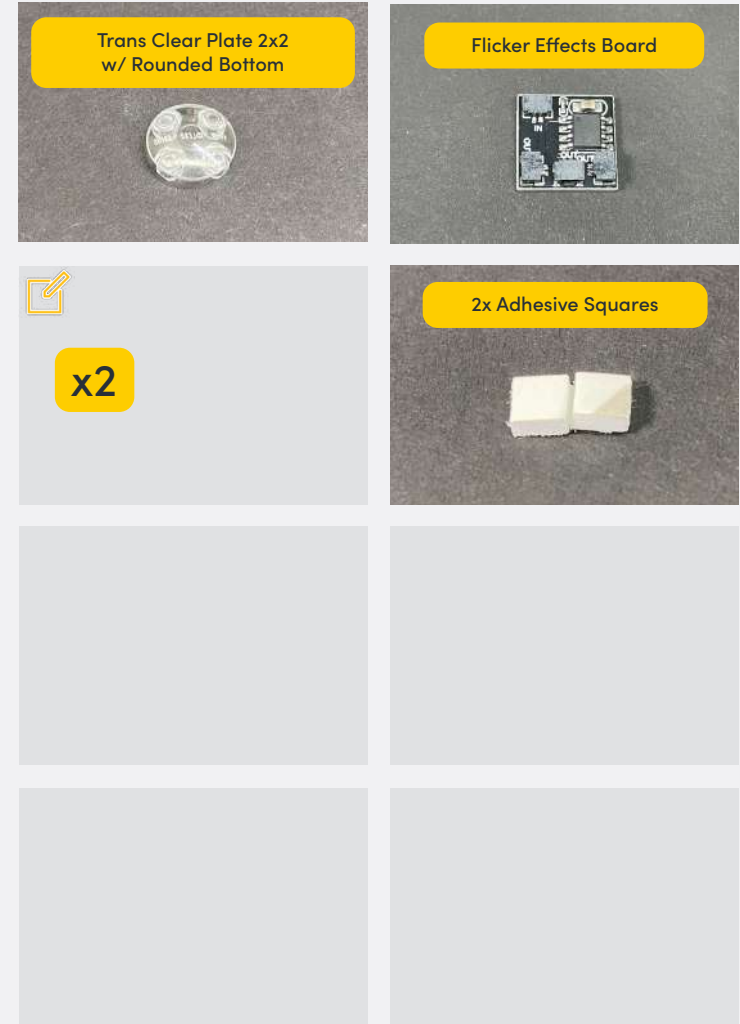
Legend

- DISCONNECT
- CONNECT / RECONNECT
- TURN / FLIP
- DIRECTIONAL
- TWIST / BRAID
- POWER ON TEST
- NOTE ICON

1



Note content goes here lorem ipsum dolor sit amet lorem ipsum dolor sit amet lorem ipsum dolor.



Connect the other end to a USB Power Bank, USB Wall Adaptor, or USB to AA Battery Pack (sold separately)

2



Legend → DISCONNECT → CONNECT / RECONNECT ↻ TURN / FLIP → DIRECTIONAL ↻ TWIST / BRAID * POWER ON TEST 📝 NOTE ICON

1

Note content goes here lorem ipsum dolor sit amet lorem ipsum dolor sit amet lorem ipsum dolor.

<p>White 15cm Bit Light</p>	<p>White 30cm Bit Light</p>
<p>12-Port Expansion Board</p>	<p>2x Cool White 15cm Bit Lights</p>
<p>8-Port Expansion Board</p>	<p>6-Port Expansion Board</p>
<p>Cool White 30cm Large Bit Light</p>	<p>5cm Connecting Cable</p>



2

<p>Black Round Plate 1x1 w/ Open Stud</p>	<p>Black 1x1 Plate Modified Plate Rounded w/ Handle</p>
<p>Black 1x1 Tile w/ Clip Rounded Edges</p>	<p>Black Dish 2x2 Inverted</p>
<p>15cm Connecting Cable</p>	<p>Black Arm Skeleton, Bent w Clips (Horizontal Grips)</p>
<p>Blue 30cm Bit Light</p>	<p>30cm Connecting Cable</p>

Legend

- DISCONNECT
- CONNECT / RECONNECT
- TURN / FLIP
- DIRECTIONAL
- TWIST / BRAID
- POWER ON TEST
- NOTE ICON

1

White Strip Light



Plate 1x6 (Any Colour)



2x White Strip Light



2x Plate 1x6 (Any Colour)



USB Power Cable



Trans Orange Plate 1x1



50cm Connecting Cable



Note content goes here lorem ipsum dolor sit amet lorem ipsum dolor sit amet lorem ipsum dolor.



Trans Clear Round Plate 2x2 w/ Rounded Bottom



Flicker Effects Board



Connect the other end to a USB Power Bank, USB Wall Adaptor, or USB to AA Battery Pack (sold separately)



x2

2x Adhesive Squares


2

Trans Red Plate 1x1



Trans Clear Round Plate 1x1



Trans Red Round Plate 1x1



Trans Orange Round Plate 1x1


Legend

- DISCONNECT
- CONNECT / RECONNECT
- TURN / FLIP
- DIRECTIONAL
- TWIST / BRAID
- POWER ON TEST
- NOTE ICON

1

Note content goes here lorem ipsum dolor sit amet lorem ipsum dolor sit amet lorem ipsum dolor.

<p>Gun Effects Board</p>	<p>Multi Effects Board</p>
<p>2x White Strip Light</p>	<p>2x Plate 1x6 (Any Colour)</p>
<p>Micro 4-Port Expansion Board</p>	<p>Micro 8-Port Expansion Board</p>
<p>2-Port Expansion Board</p>	<p>White 30cm Micro Bit Light</p>



Connect the other end to a USB Power Bank, USB Wall Adaptor, or USB to AA Battery Pack (sold separately)

2

<p>Trans Clear Plate 2x2 w/ Rounded Bottom</p>	<p>Flicker Effects Board</p>
<p>x2</p>	<p>2x Adhesive Squares</p>



Legend → DISCONNECT → CONNECT / RECONNECT ↻ TURN / FLIP → DIRECTIONAL ↻ TWIST / BRAID * POWER ON TEST 📝 NOTE ICON