

# Light My Bricks



## LEGO® Ninjago City Gardens 71741 Light Kit Installation Guide Part 2



We're here to help you get started on part 2 of the the LEGO® Ninjago City Gardens (71741) Lighting Kit.

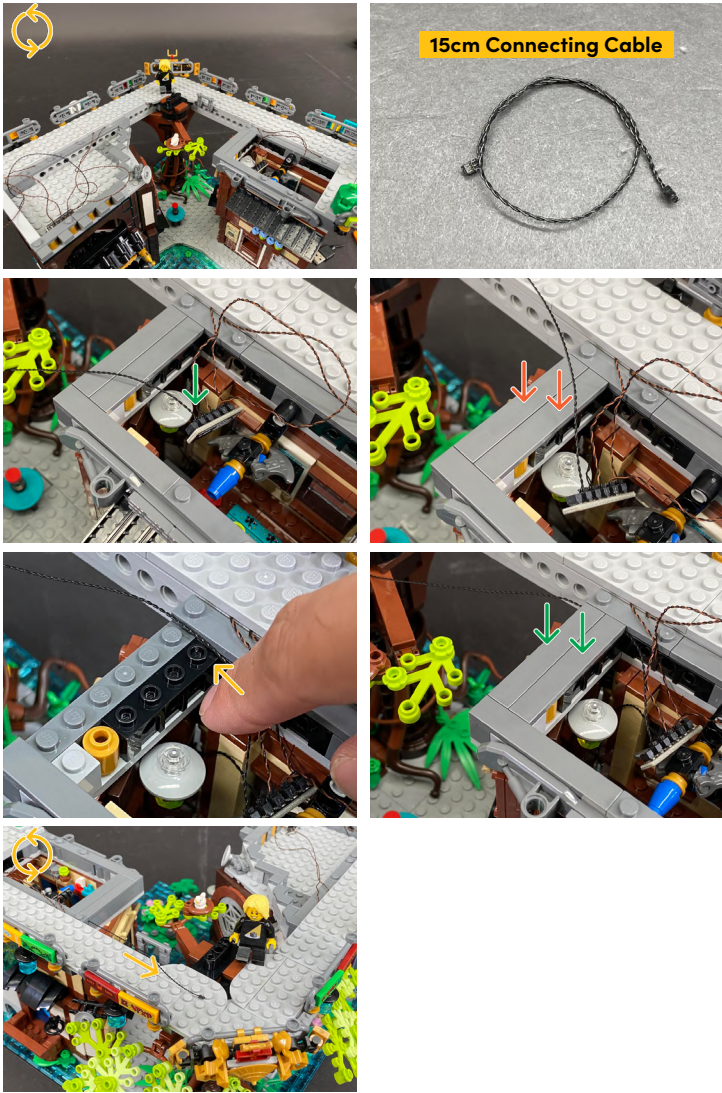
This PDF details the instructions for the LED light kit only. If you are wishing to purchase this LED Lighting Kit , please [click here](#) to view the product page.

Have fun and enjoy!

# Contents

3.	Part 2.
37.	Final Product
38.	Troubleshooting
43.	Contact

44.

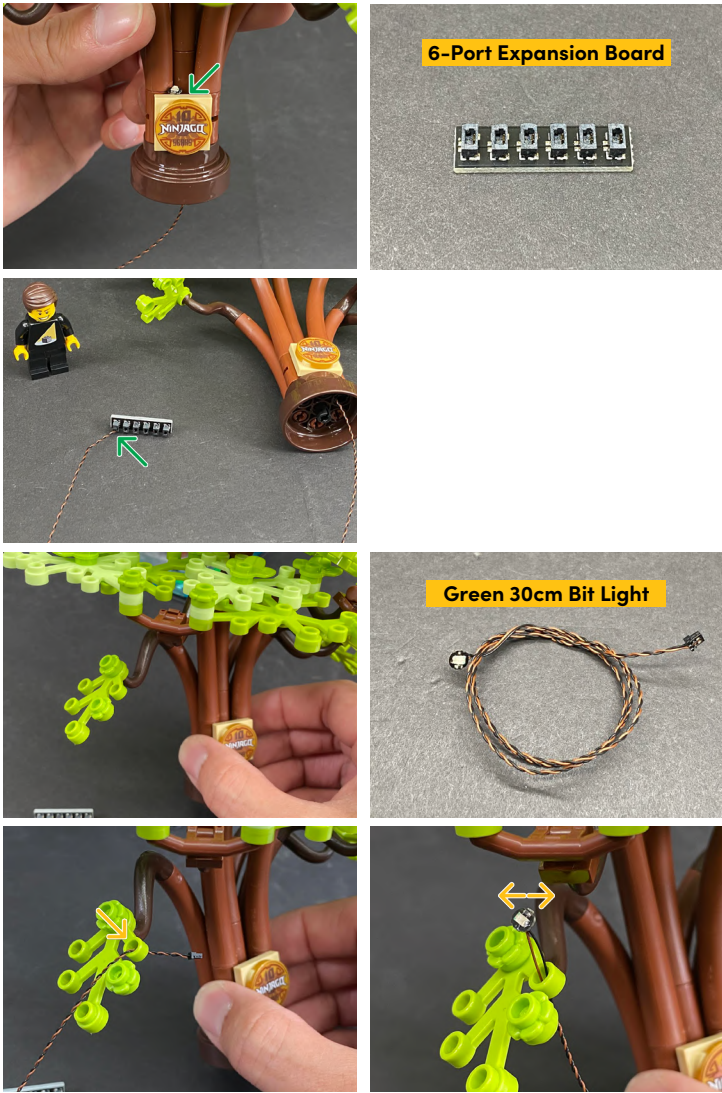


45.



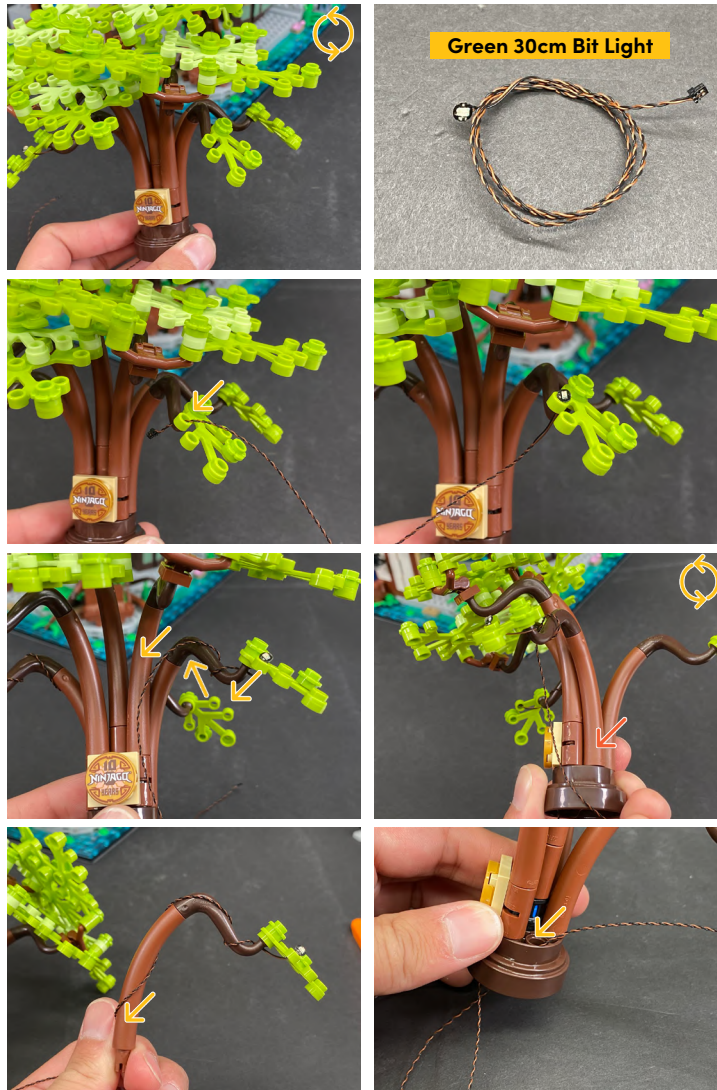


46.





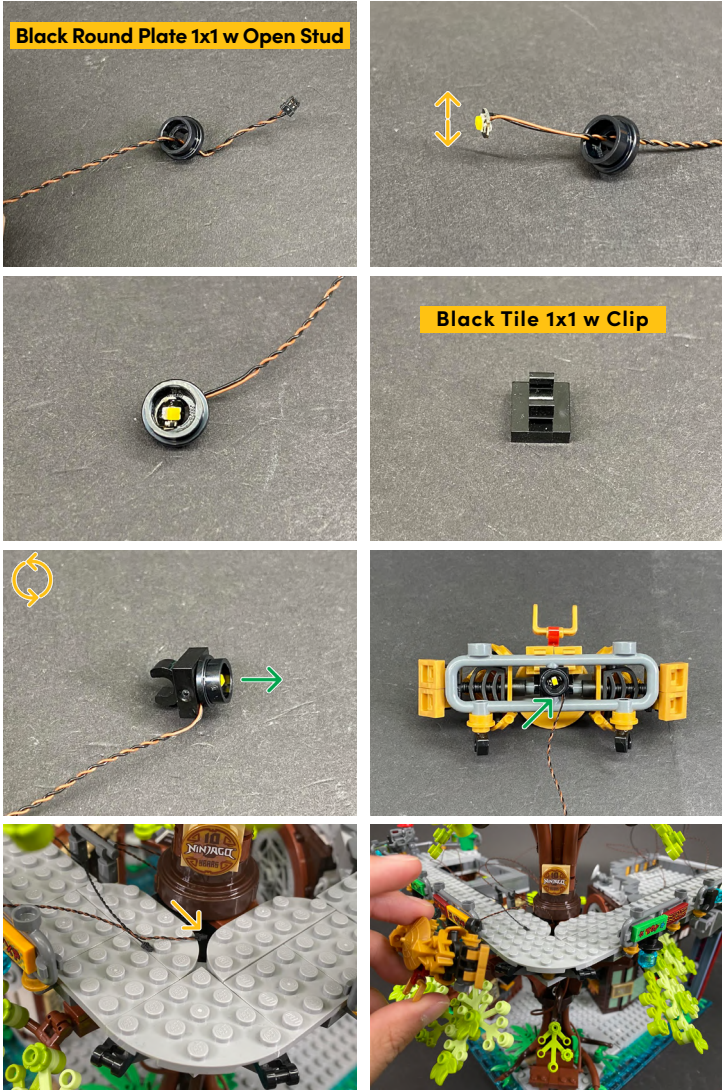
47.



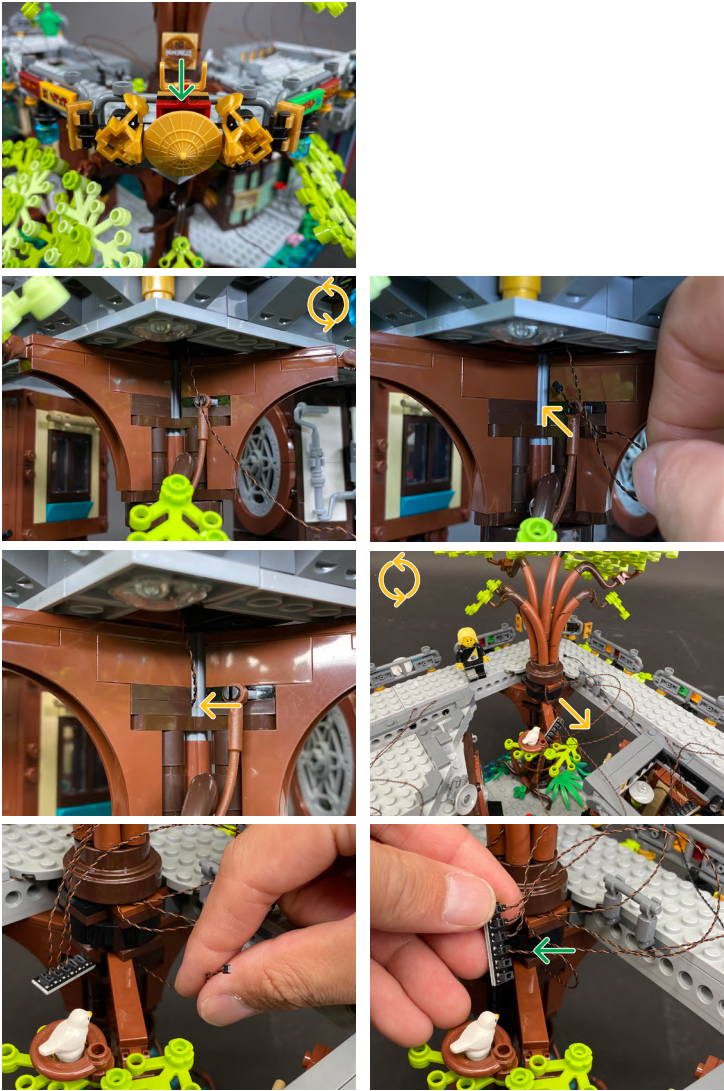
48.








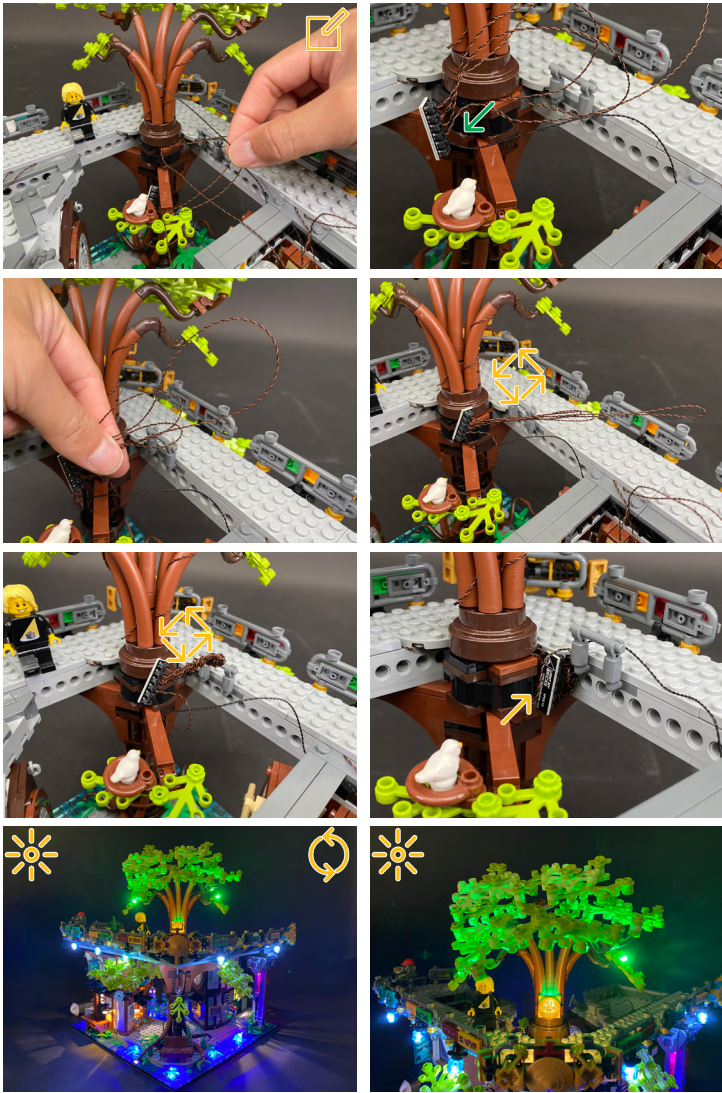
49.



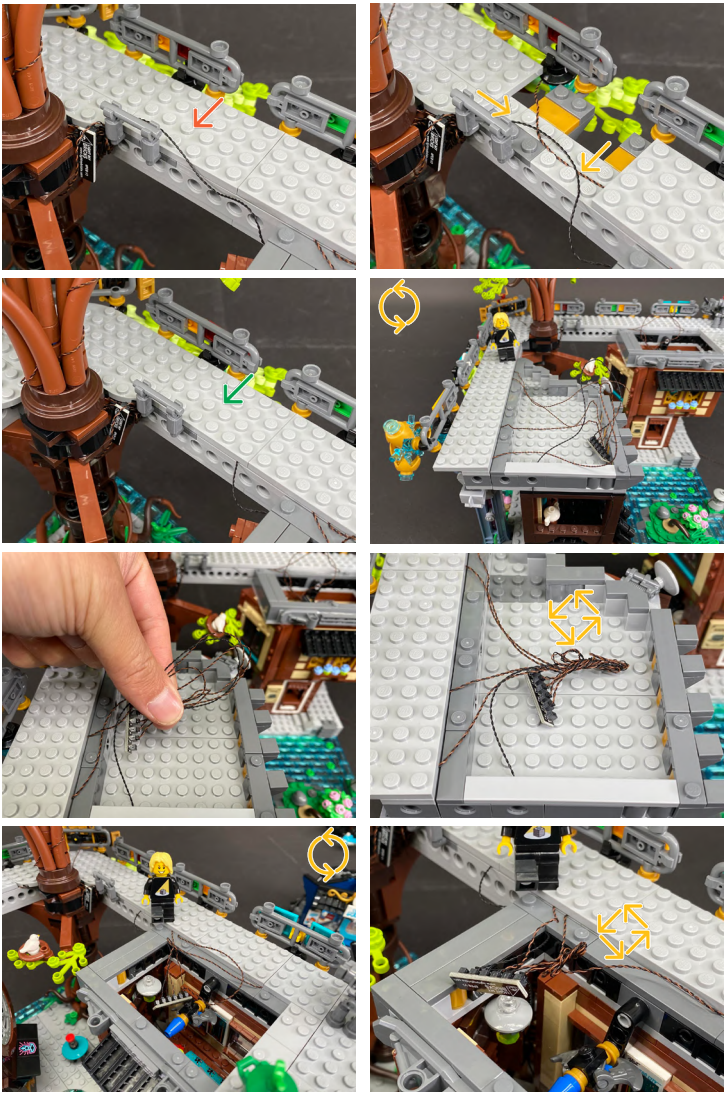



LEGEND: |  DISCONNECT |  CONNECT / RECONNECT |  TURN / FLIP |  DIRECTIONAL |  TWIST / BRAID |  POWER ON / TEST

 15cm Connecting Cable from step. 44



50.



 If you experience any issues with the lights not working and suspect an issue with a component, please try a different port on the expansion board to verify where the fault lies (with the light or expansion board). To correct any issues with expansion board ports, please view the section addressing expansion board issues on our online troubleshooting guide.



51.

White Strip Light

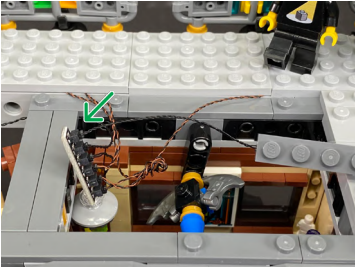


Plate 1x6 (any colour)




5cm Connecting Cable





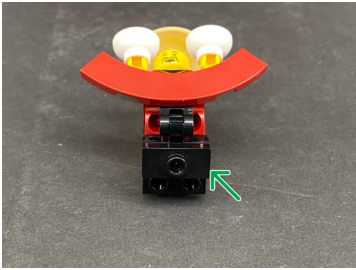







Black Plate 1x2 Modified w Stud Jumper

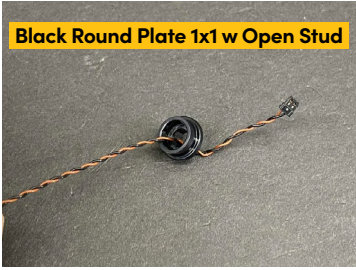


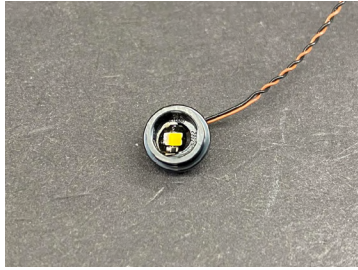


White 30cm Bit Light




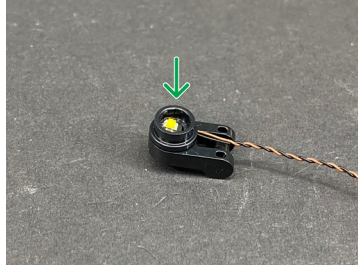
Black Round Plate 1x1 w Open Stud



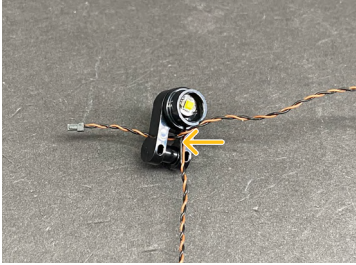


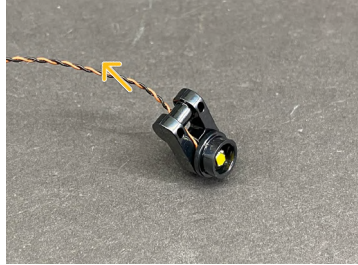
Black 1x1 Modified Plate Rounded with Handle x2



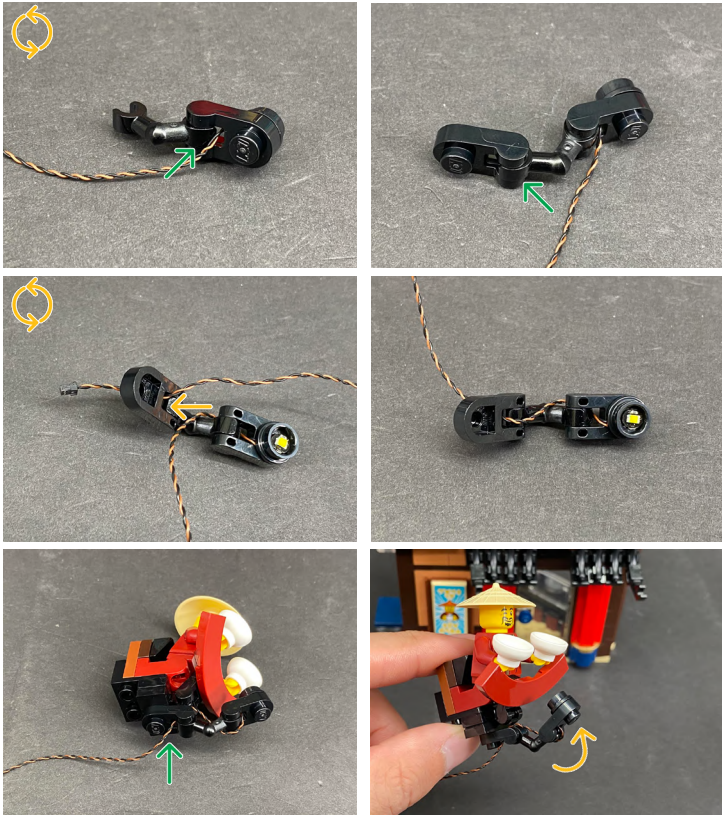


Black Arm Skeleton, Bent w Clips (Horizontal Grip)

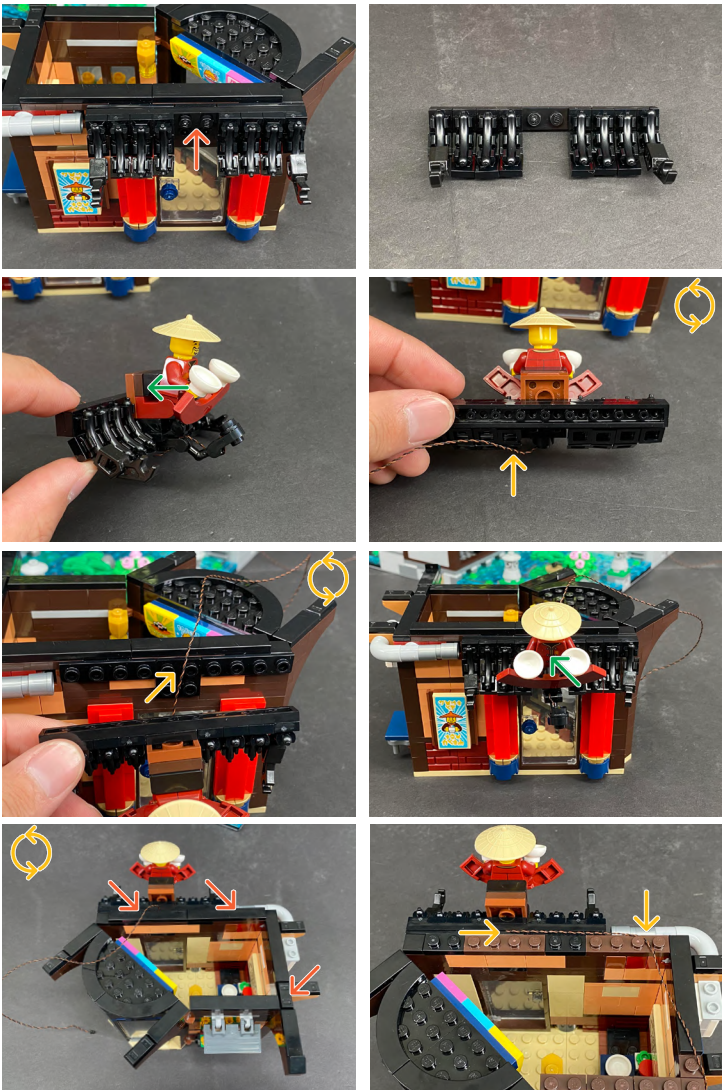









52.

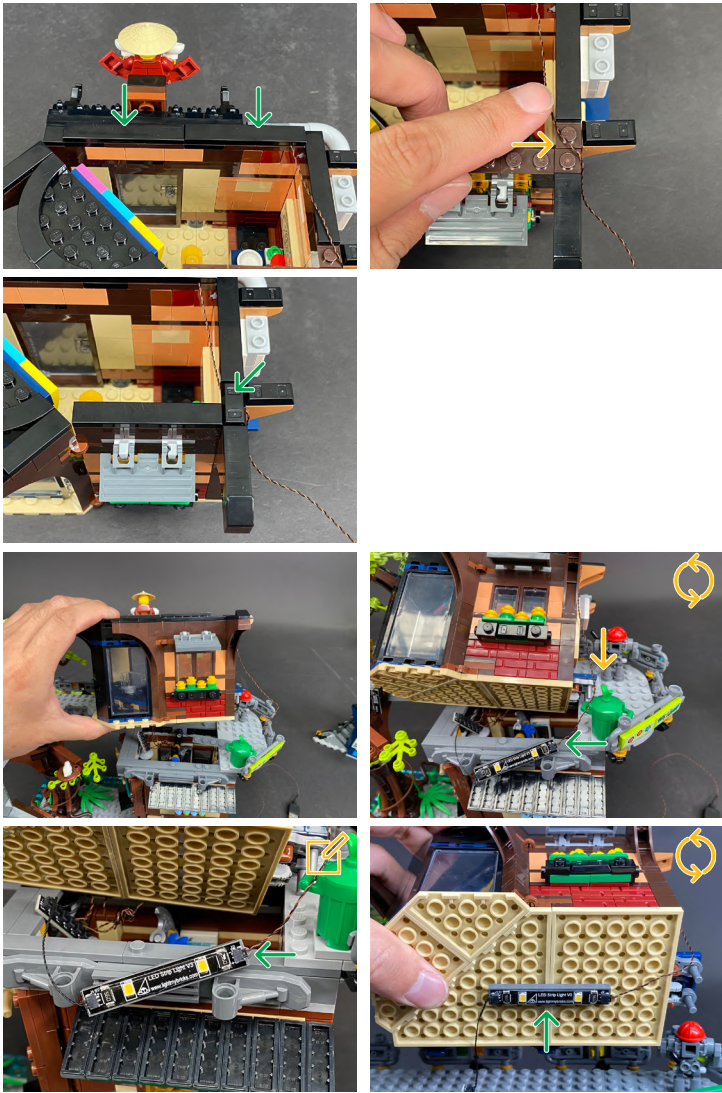




LEGEND: |  DISCONNECT |  CONNECT / RECONNECT |  TURN / FLIP |  DIRECTIONAL |  TWIST / BRAID |  POWER ON / TEST


53.

 Connect the Bit Light to the Strip Light from step. 50



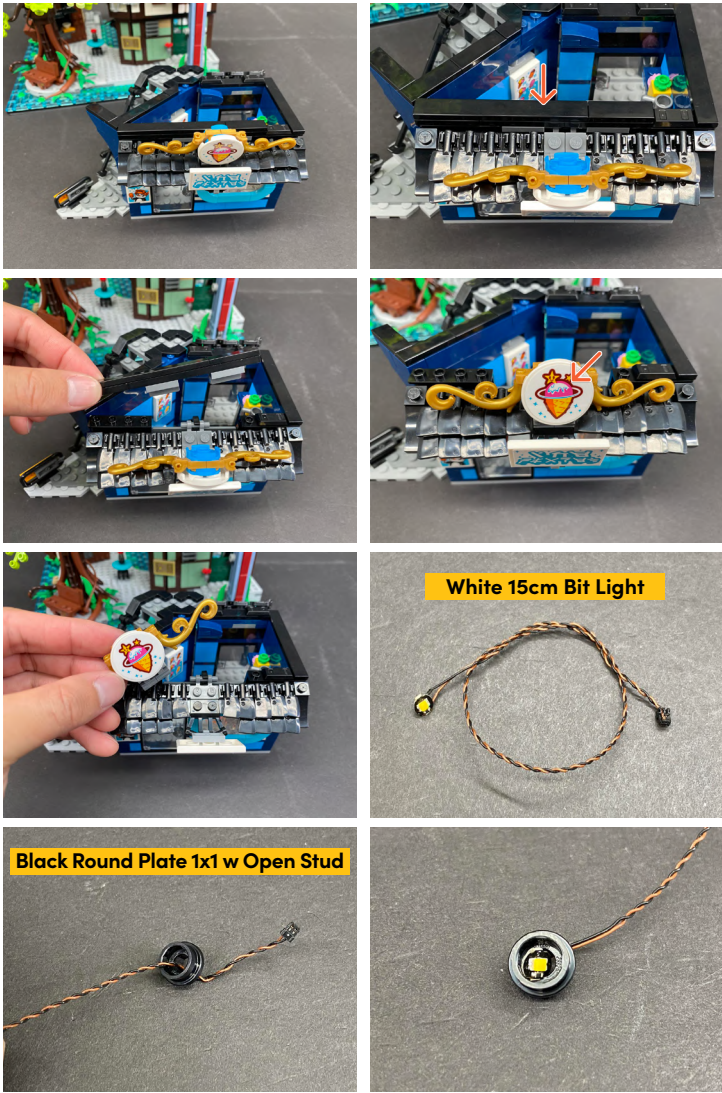
54.



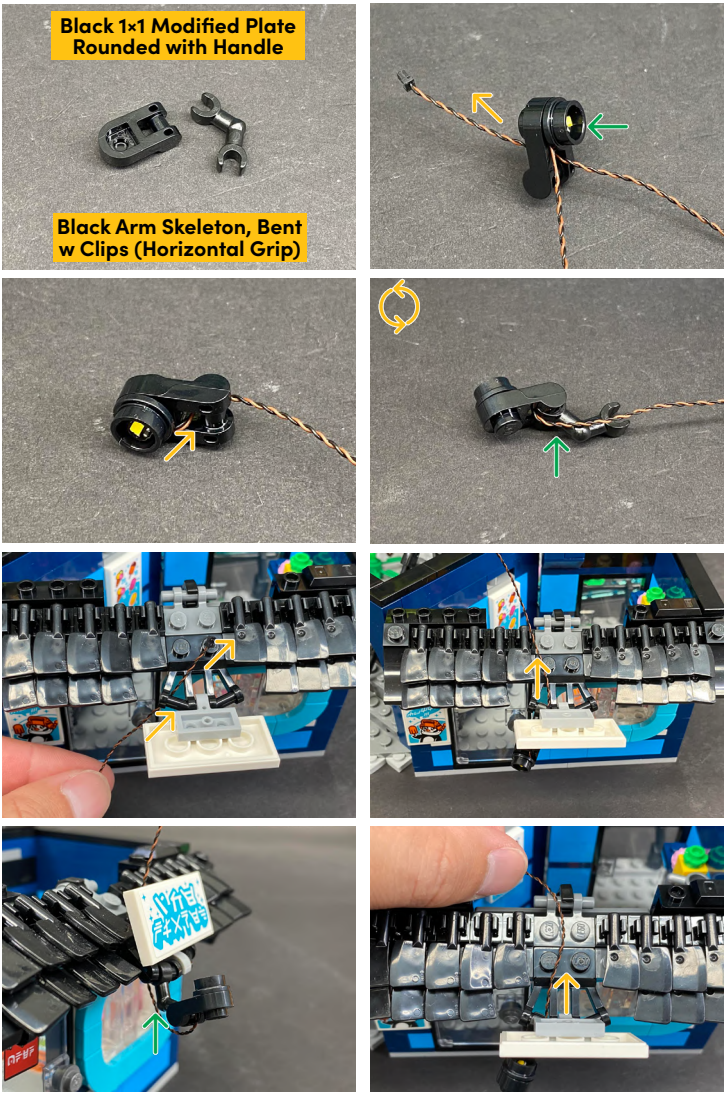
 If you experience any issues with the lights not working and suspect an issue with a component, please try a different port on the expansion board to verify where the fault lies (with the light or expansion board). To correct any issues with expansion board ports, please view the section addressing expansion board issues on our online troubleshooting guide.



55.

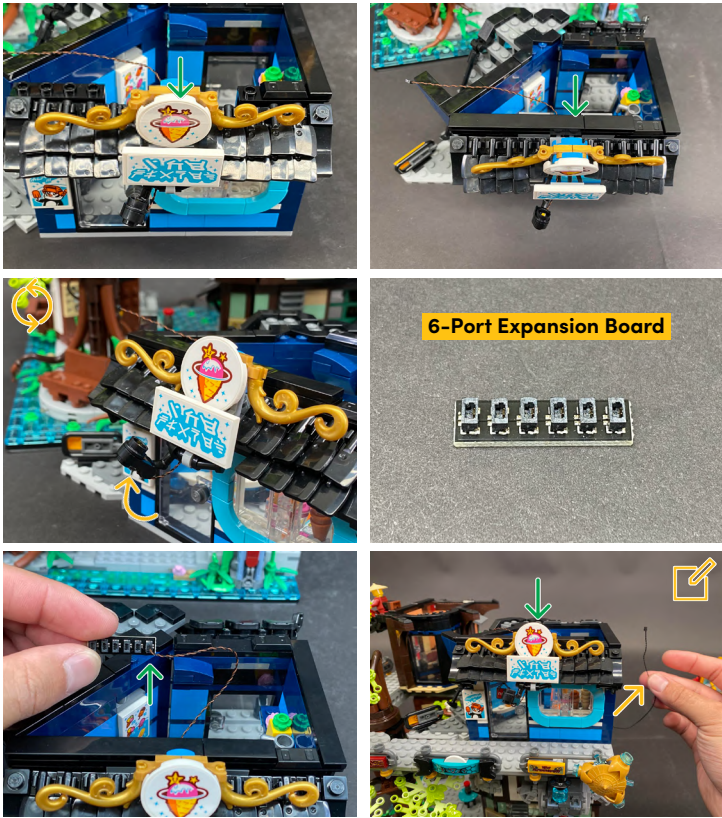



56.



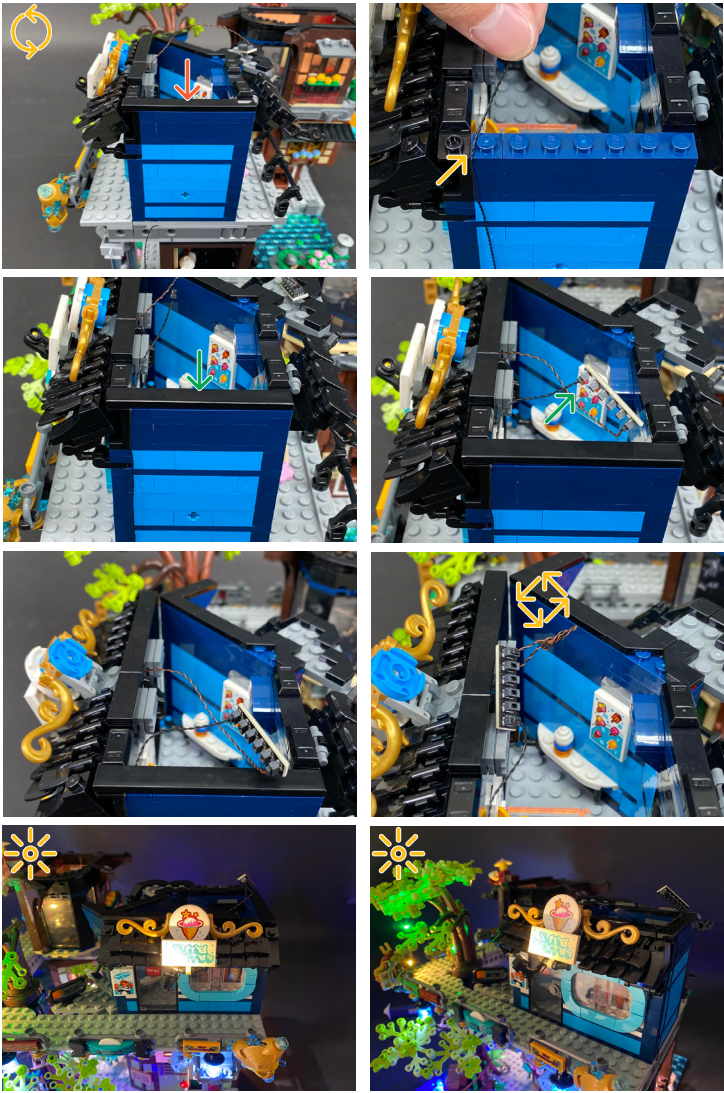



LEGEND: |  DISCONNECT |  CONNECT / RECONNECT |  TURN / FLIP |  DIRECTIONAL |  TWIST / BRAID |  POWER ON / TEST



 Ensure the 15cm Connecting Cable from step. 54 is laid out the side

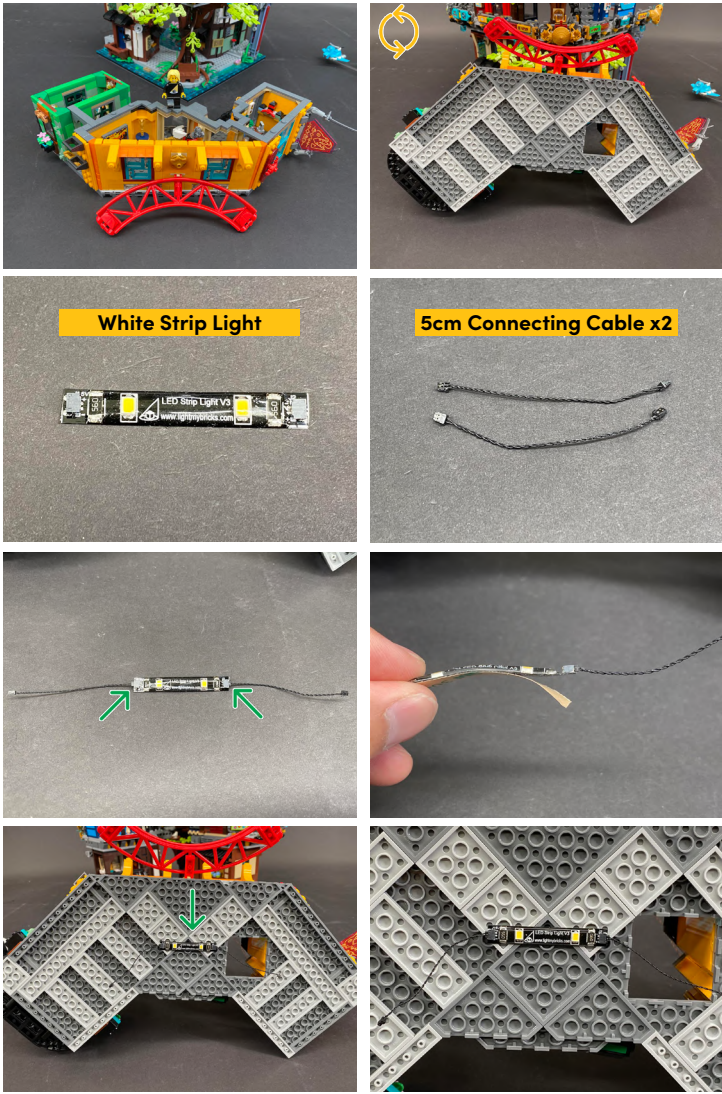
57.



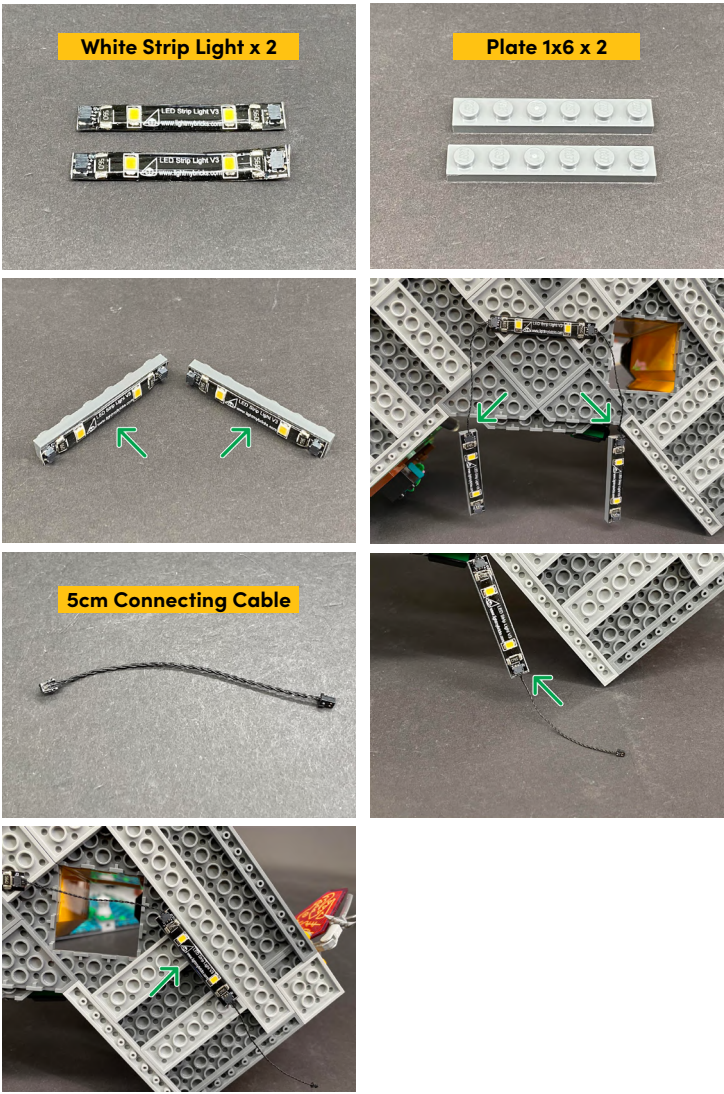
 If you experience any issues with the lights not working and suspect an issue with a component, please try a different port on the expansion board to verify where the fault lies (with the light or expansion board). To correct any issues with expansion board ports, please view the section addressing expansion board issues on our online troubleshooting guide.



58.

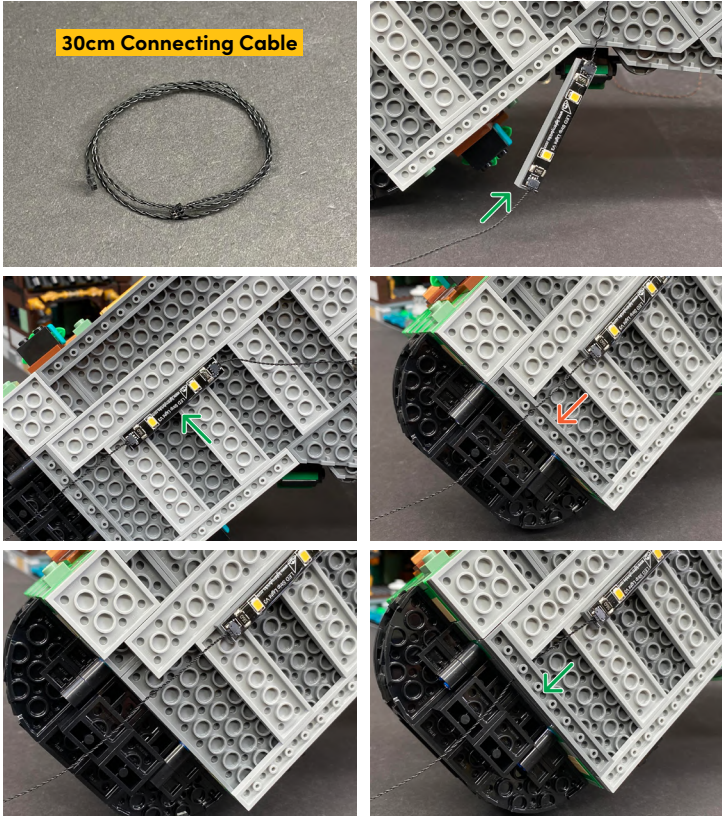


59.

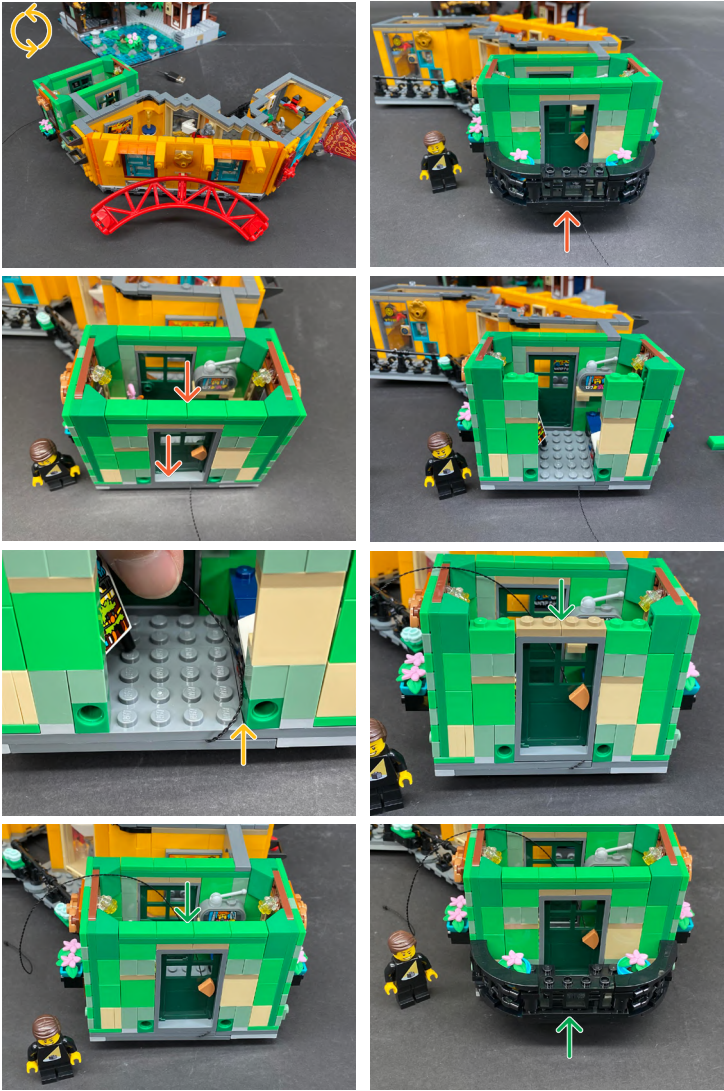




60.



61.



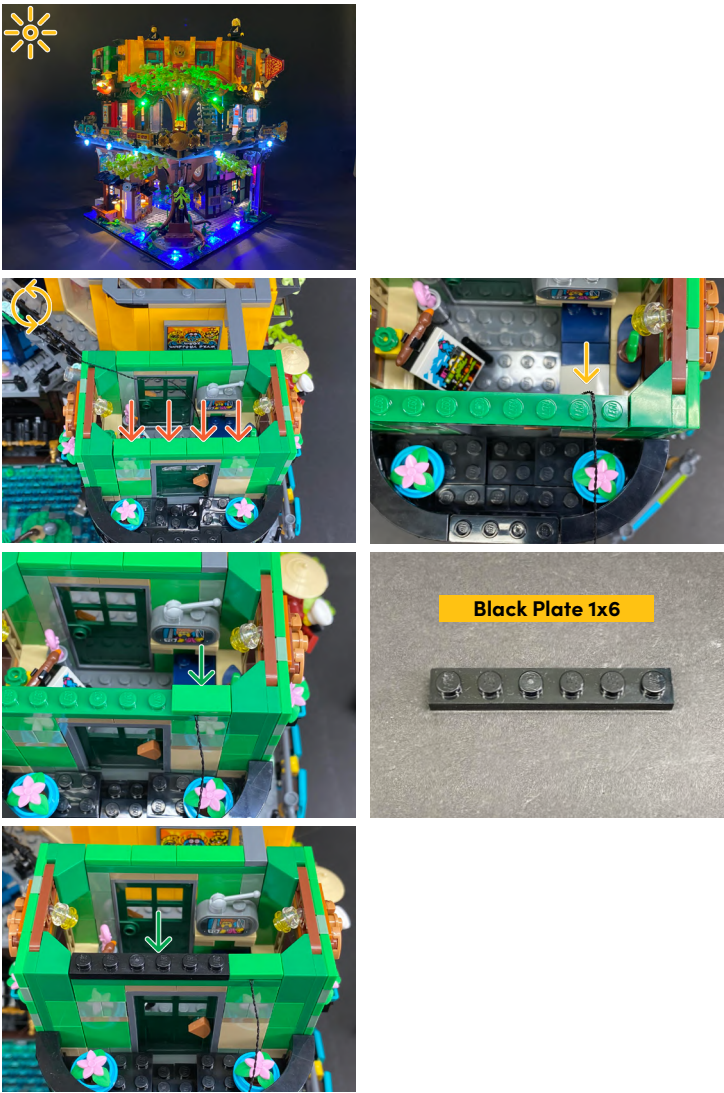


62.

✎ Connect the 5cm Connecting Cable from step. 59

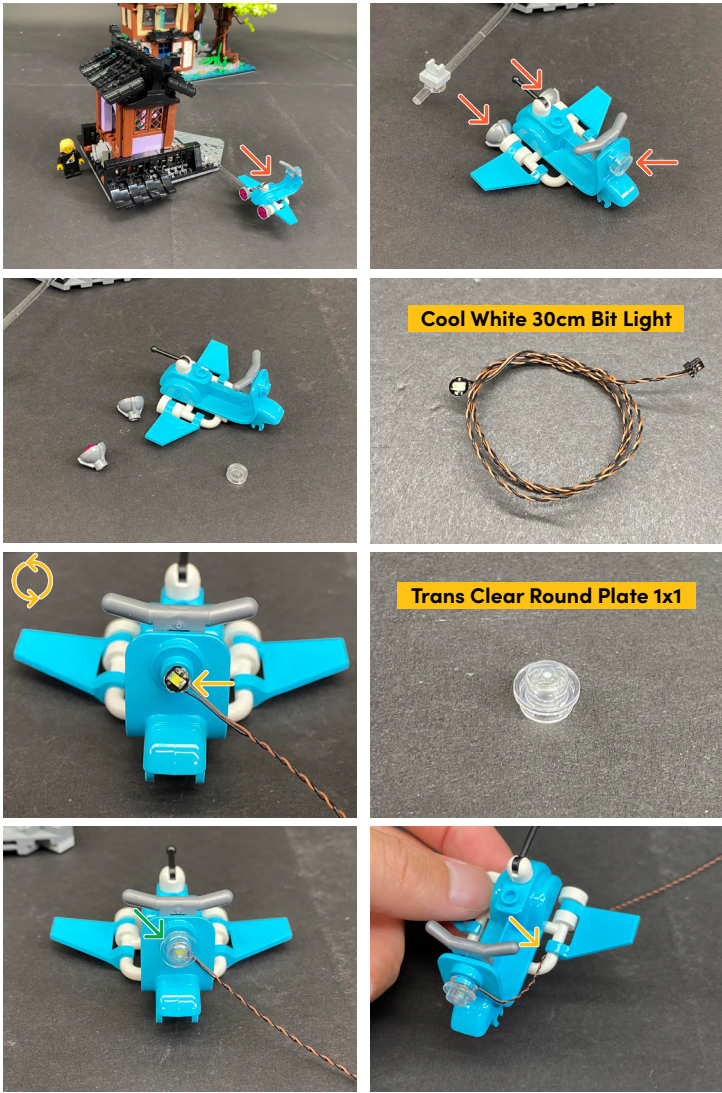


63.

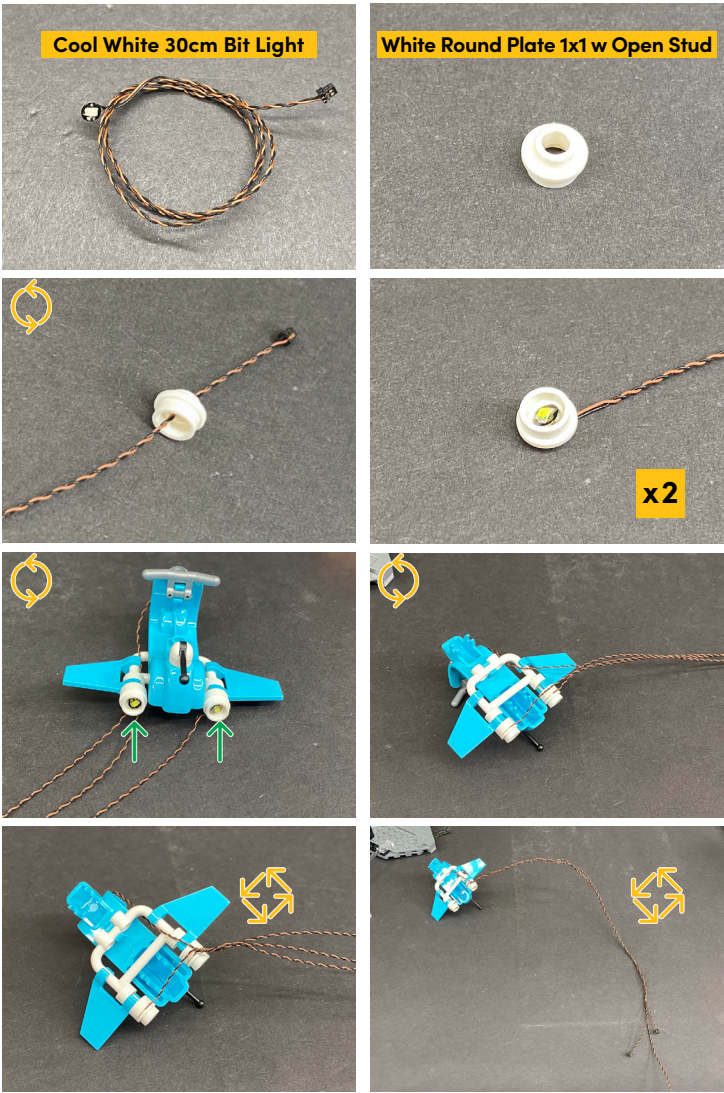




64.

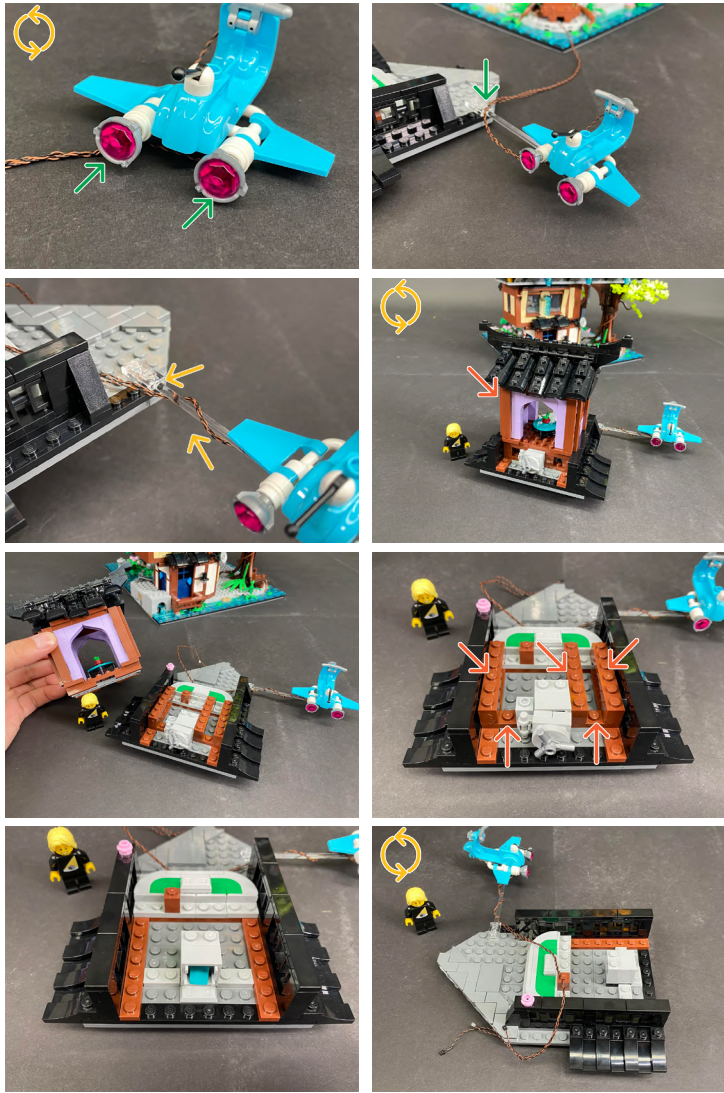


65.

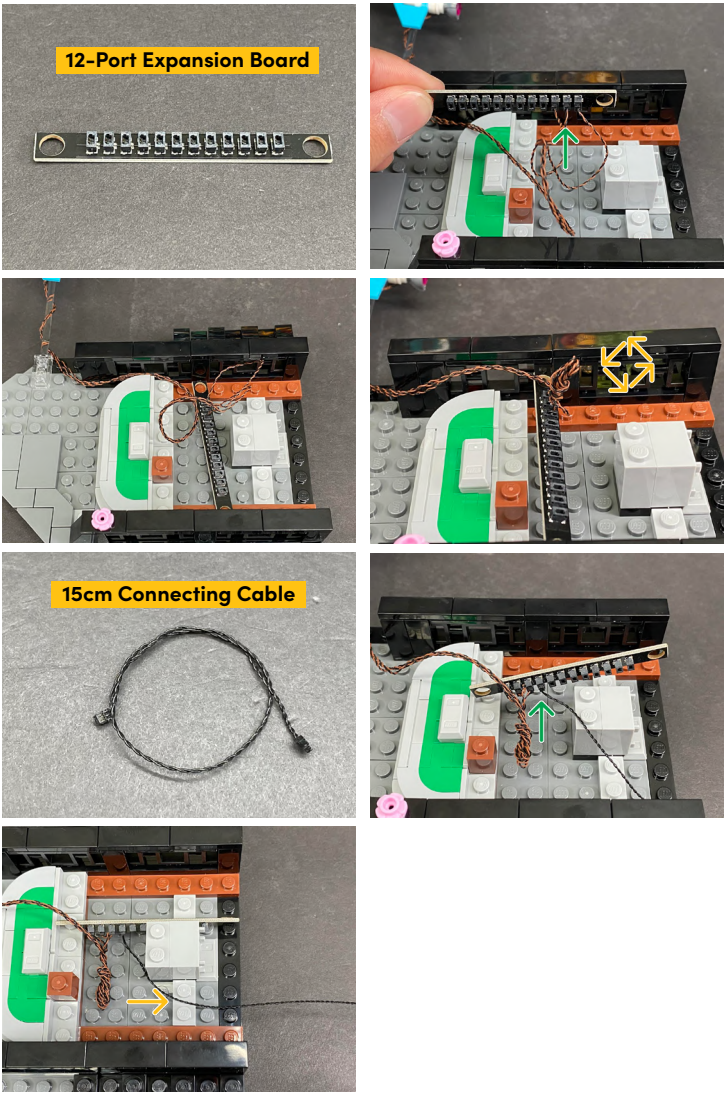




66.



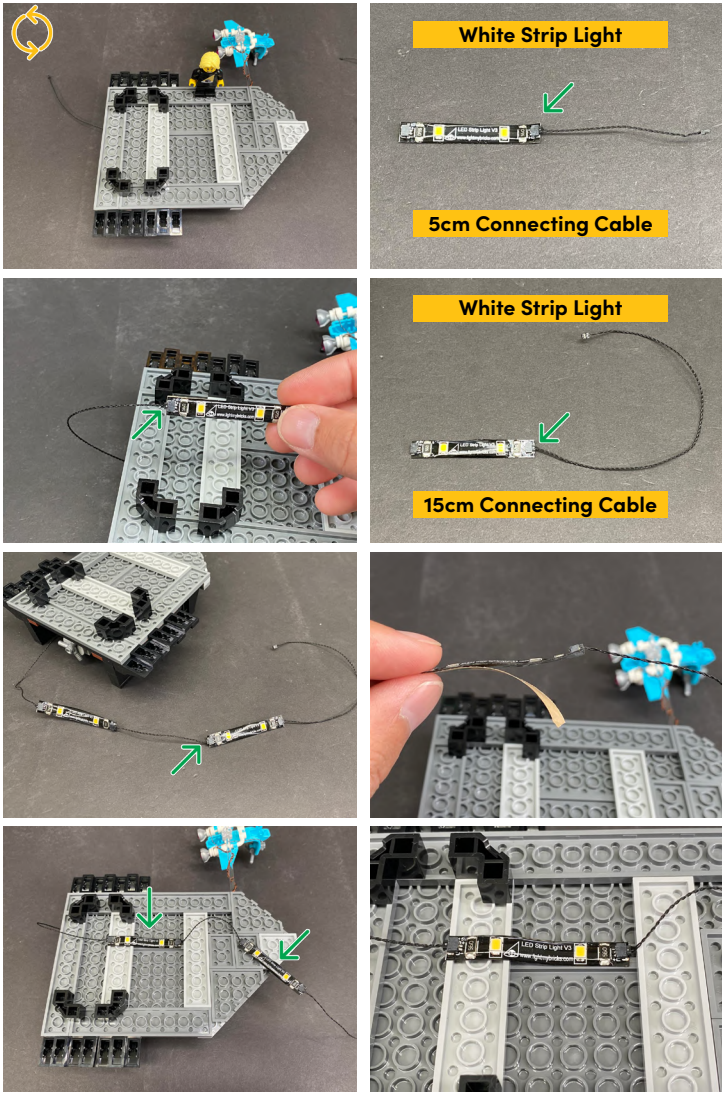
67.







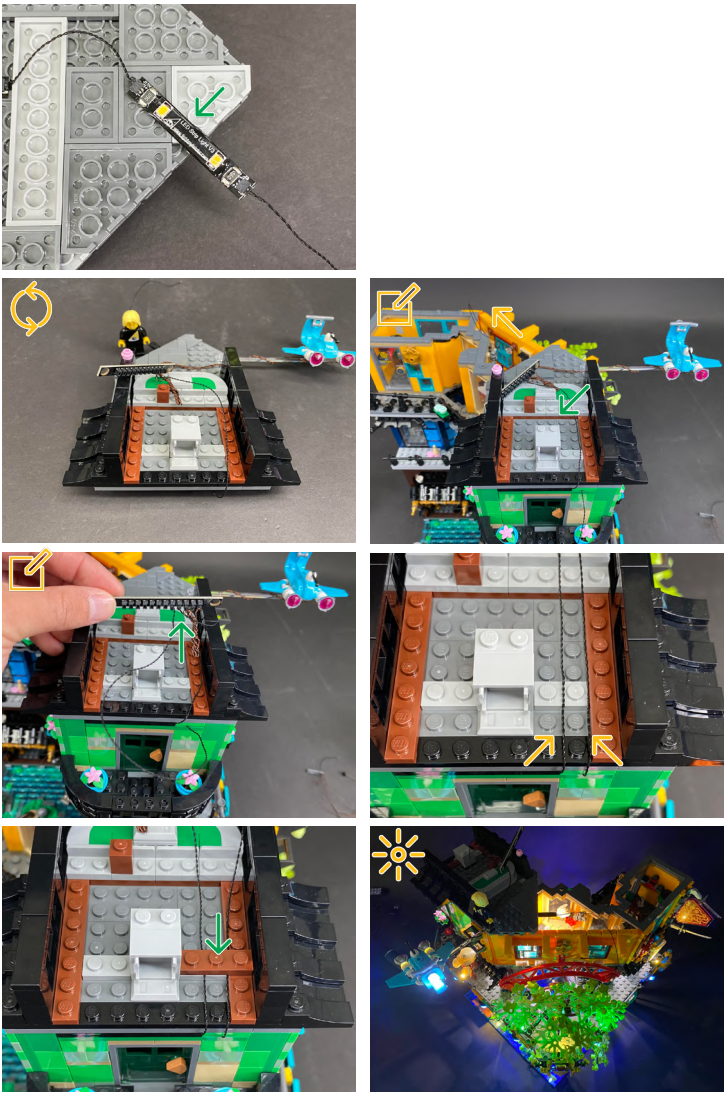
LEGEND: |  DISCONNECT |  CONNECT / RECONNECT |  TURN / FLIP |  DIRECTIONAL |  TWIST / BRAID |  POWER ON / TEST


68.




69.

-  Ensure the 15cm Cable is laid out the side towards the middle of the set as we will connect it at a later step
-  Connect the 30cm Connecting Cable from step. 60



 If you experience any issues with the lights not working and suspect an issue with a component, please try a different port on the expansion board to verify where the fault lies (with the light or expansion board). To correct any issues with expansion board ports, please view the section addressing expansion board issues on our online troubleshooting guide.



LEGEND: |  DISCONNECT |  CONNECT / RECONNECT |  TURN / FLIP |  DIRECTIONAL |  TWIST / BRAID |  POWER ON / TEST

70.



**Black 1x1 Modified Plate Rounded with Handle**

**Black Tile 1x1 w Clip**

**Black Round Plate 1x1 w Open Stud**

**Pink 30cm Bit Light**








71.





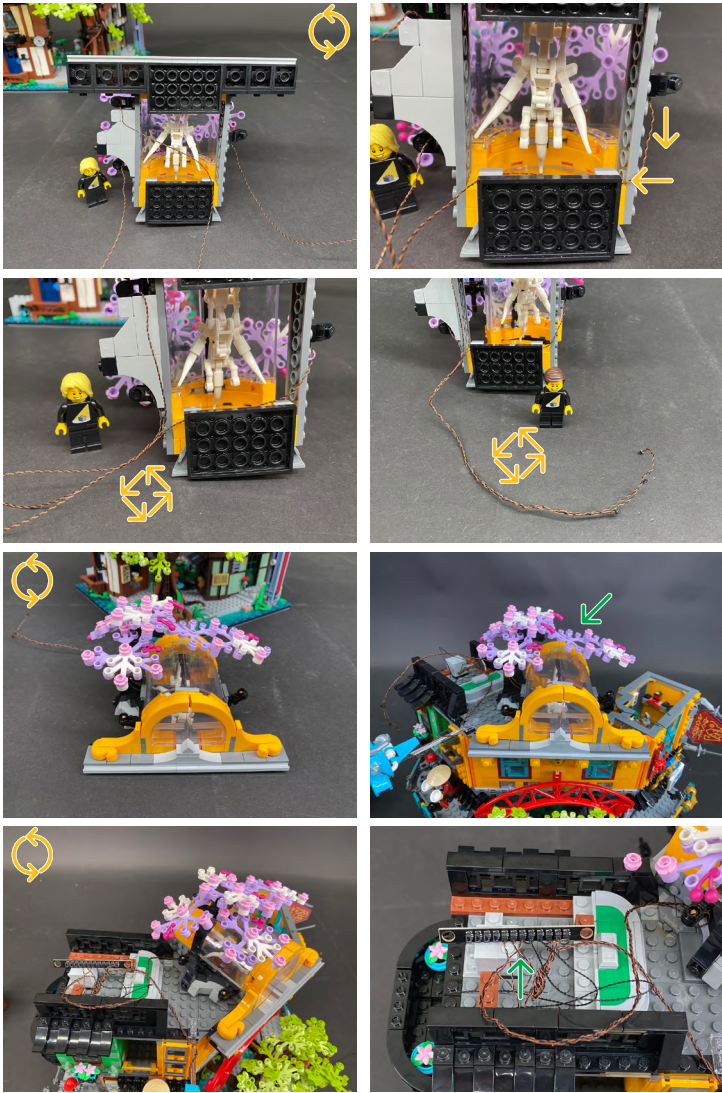




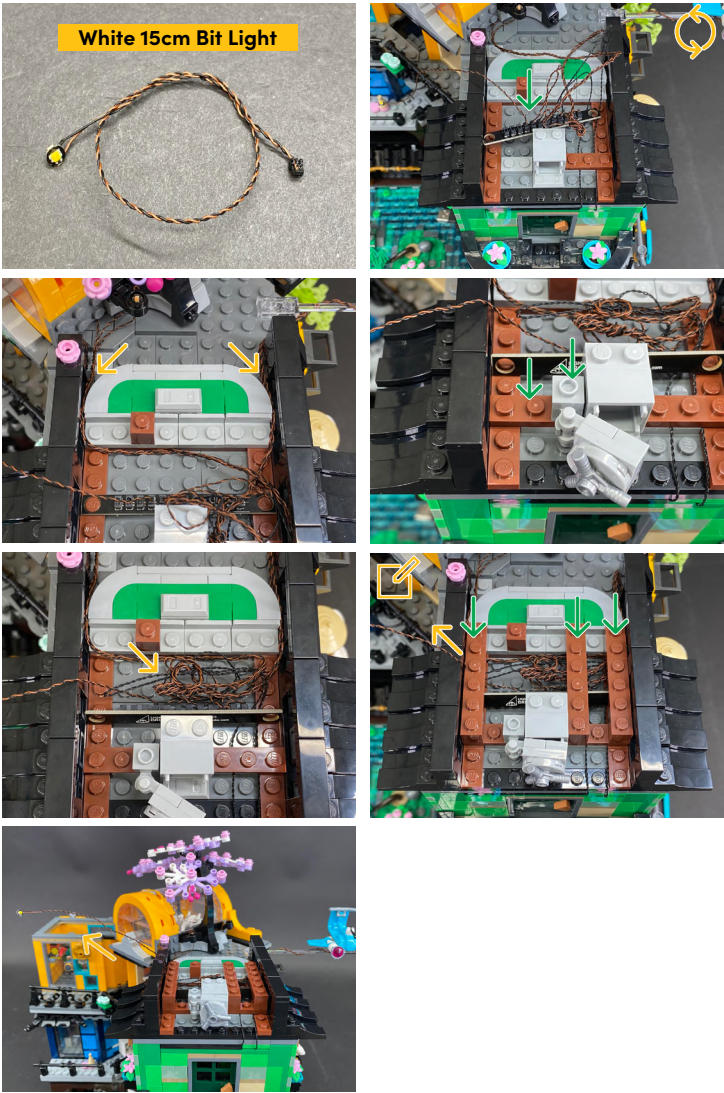
 If you experience any issues with the lights not working and suspect an issue with a component, please try a different port on the expansion board to verify where the fault lies (with the light or expansion board). To correct any issues with expansion board ports, please view the section addressing expansion board issues on our online troubleshooting guide.



72.



73.



Ensure the White 15cm Bit Light is laid out the side



LEGEND: |  DISCONNECT |  CONNECT / RECONNECT |  TURN / FLIP |  DIRECTIONAL |  TWIST / BRAID |  POWER ON / TEST

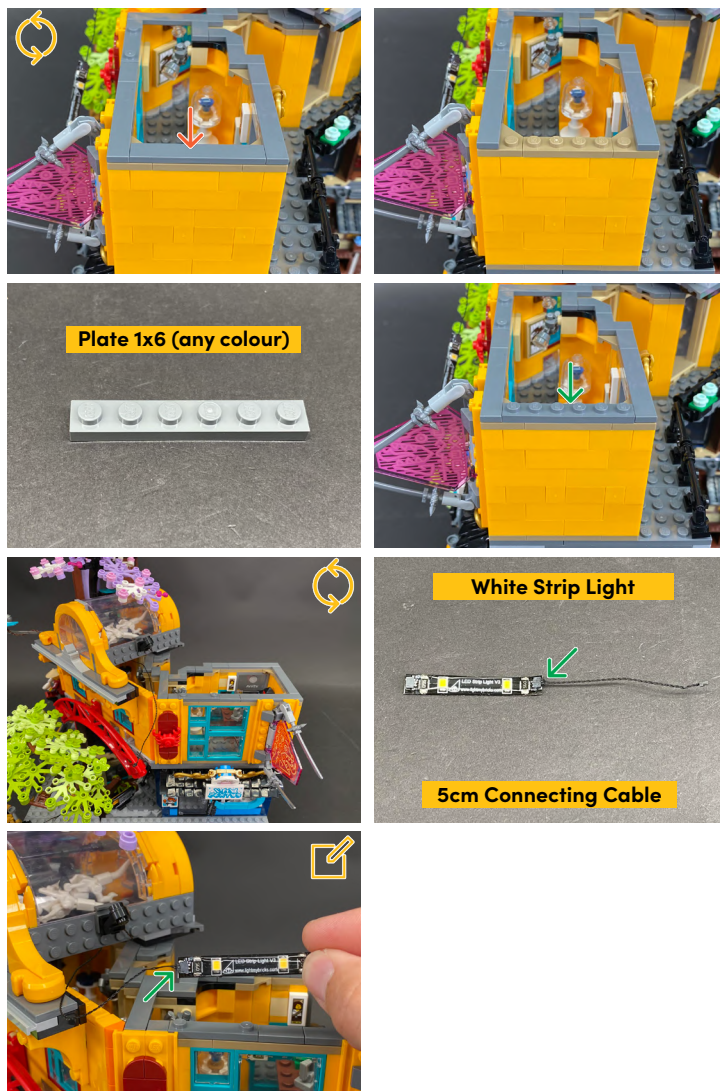
74.




If you experience any issues with the lights not working and suspect an issue with a component, please try a different port on the expansion board to verify where the fault lies (with the light or expansion board). To correct any issues with expansion board ports, please view the section addressing expansion board issues on our online troubleshooting guide.



**75.**



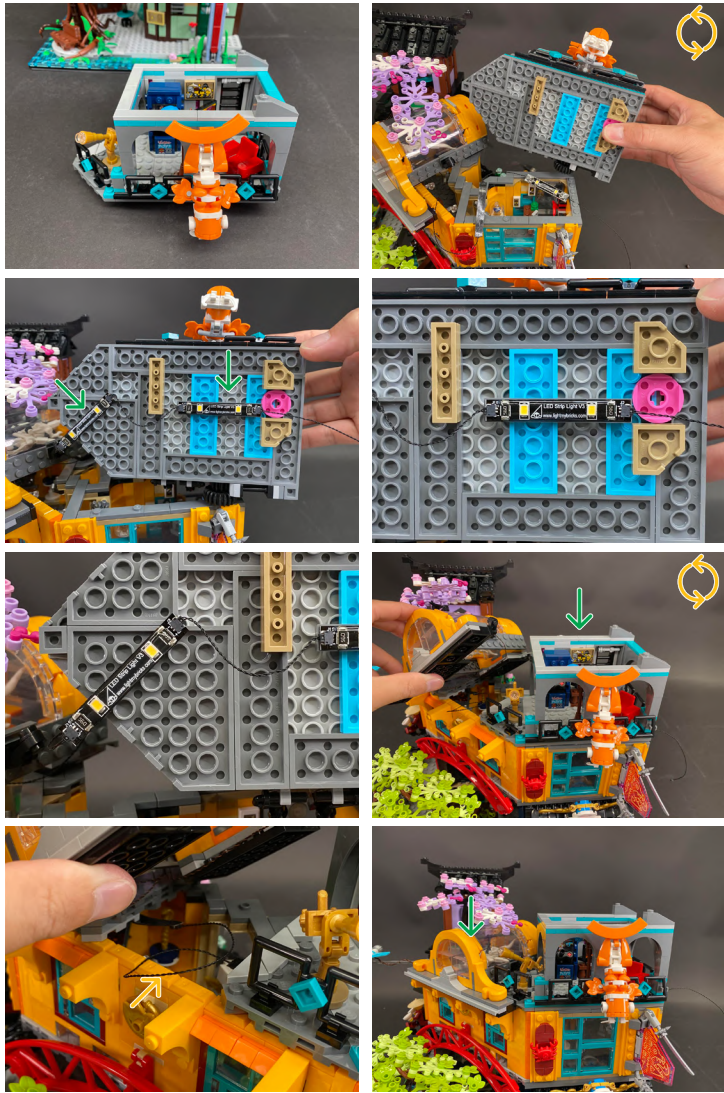
 Connect the 15cm Cable from step. 68.

76.




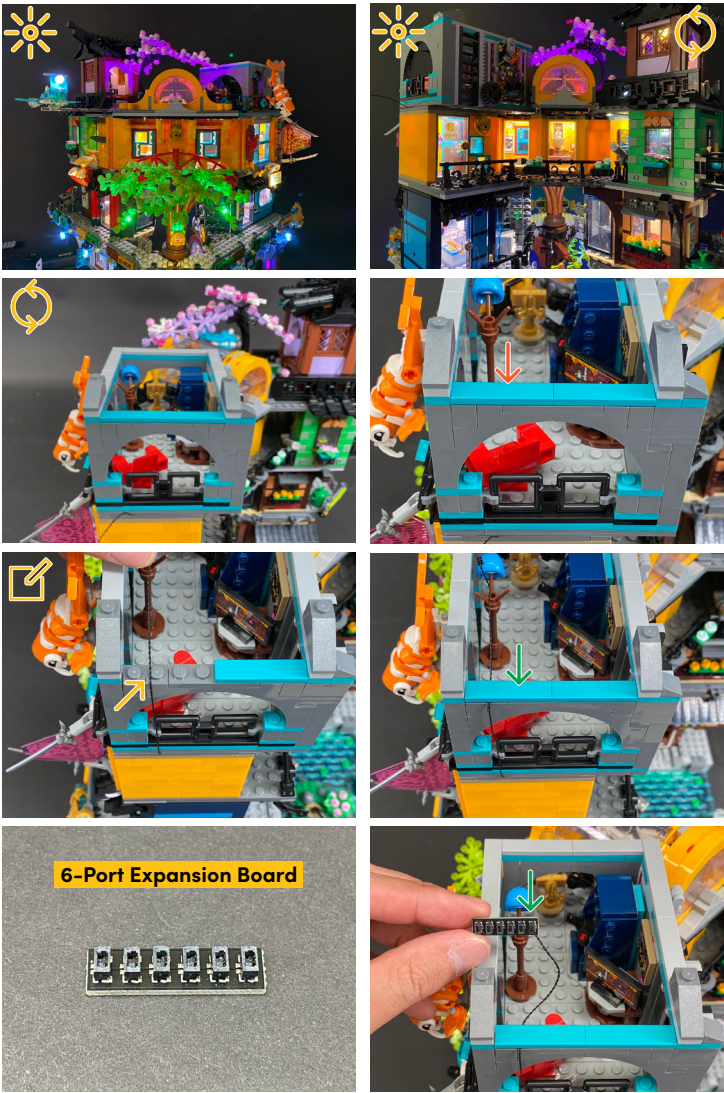


77.



78.

 Pull up the 15cm Connecting Cable from step. 76 and lay it over.





79.

**Black Arm Skeleton, Bent w Clips (Horizontal Grip)**

**White 15cm Bit Light**

**Black Round Plate 1x1 w Open Stud**

**Black 1x1 Modified Plate Rounded with Handle**




**Black Plate 1x2 modified w Handle**

80.

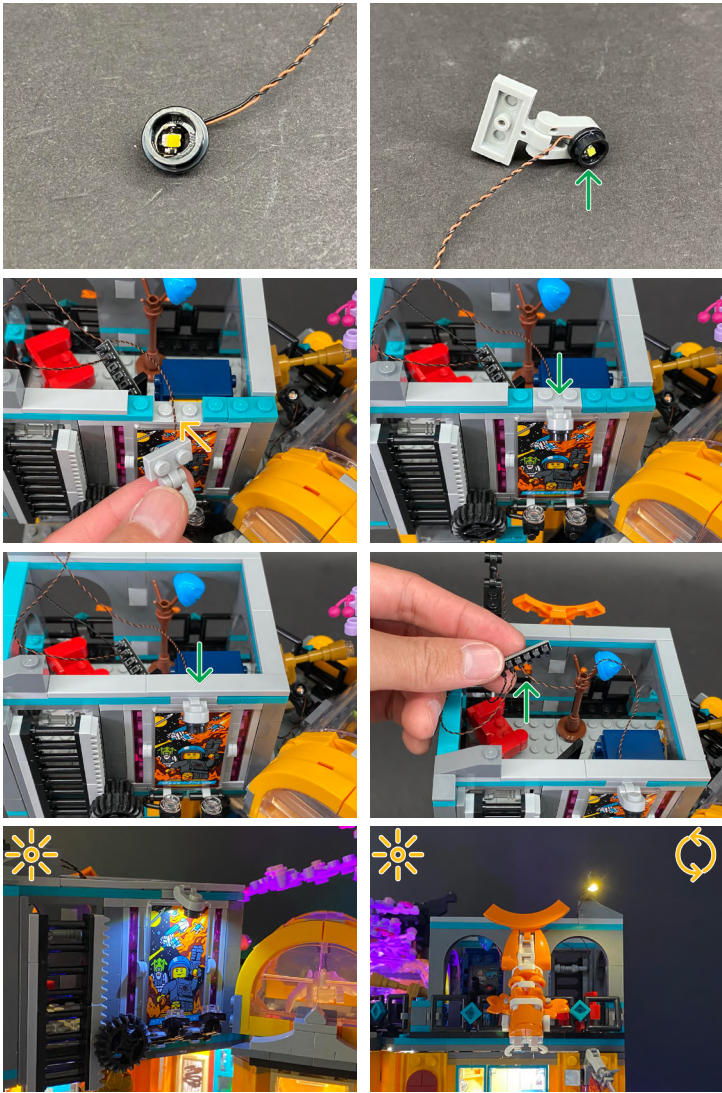
**Cool White 15cm Bit Light**

**Black Round Plate 1x1 w Open Stud**

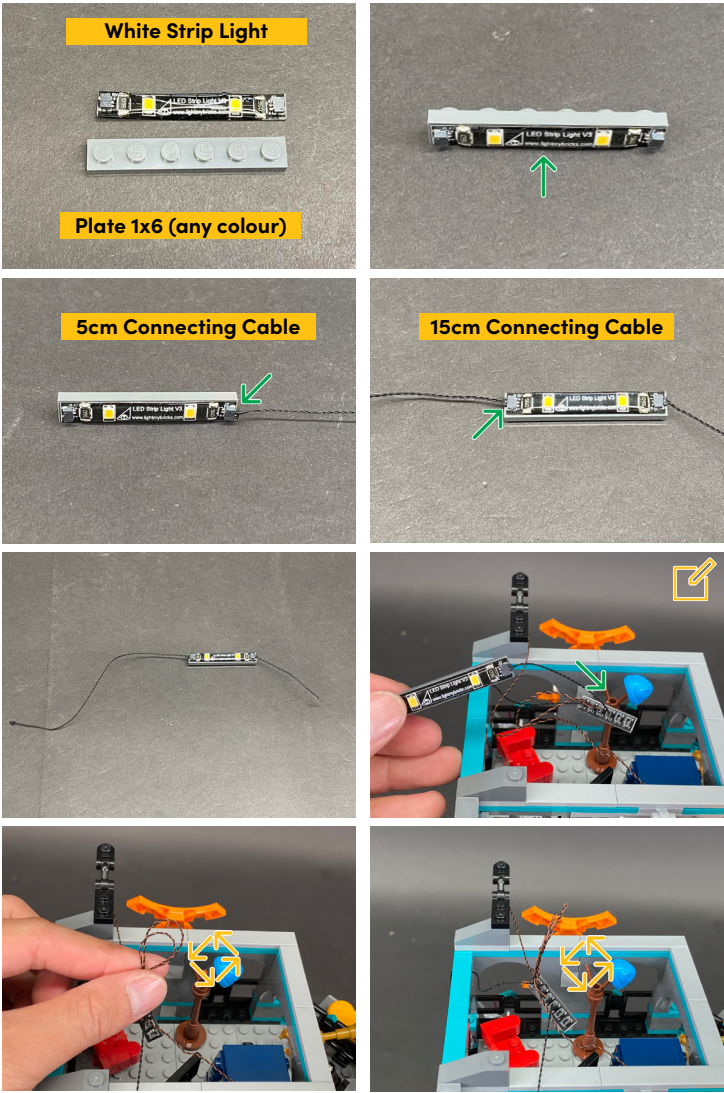



LEGEND: |  DISCONNECT |  CONNECT / RECONNECT |  TURN / FLIP |  DIRECTIONAL |  TWIST / BRAID |  POWER ON / TEST


81.



82.

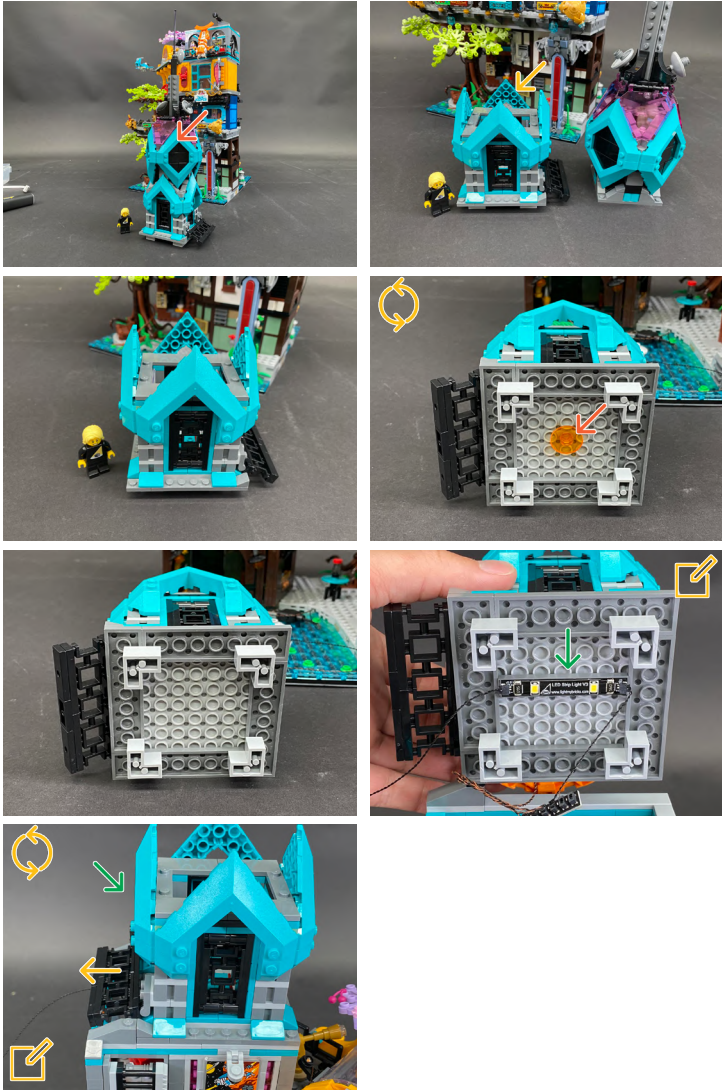


 Connect the 5cm Connecting Cable to the expansion board

 If you experience any issues with the lights not working and suspect an issue with a component, please try a different port on the expansion board to verify where the fault lies (with the light or expansion board). To correct any issues with expansion board ports, please view the section addressing expansion board issues on our online troubleshooting guide.



83.



84.

Pull up the 15cm Connecting Cable from step. 82




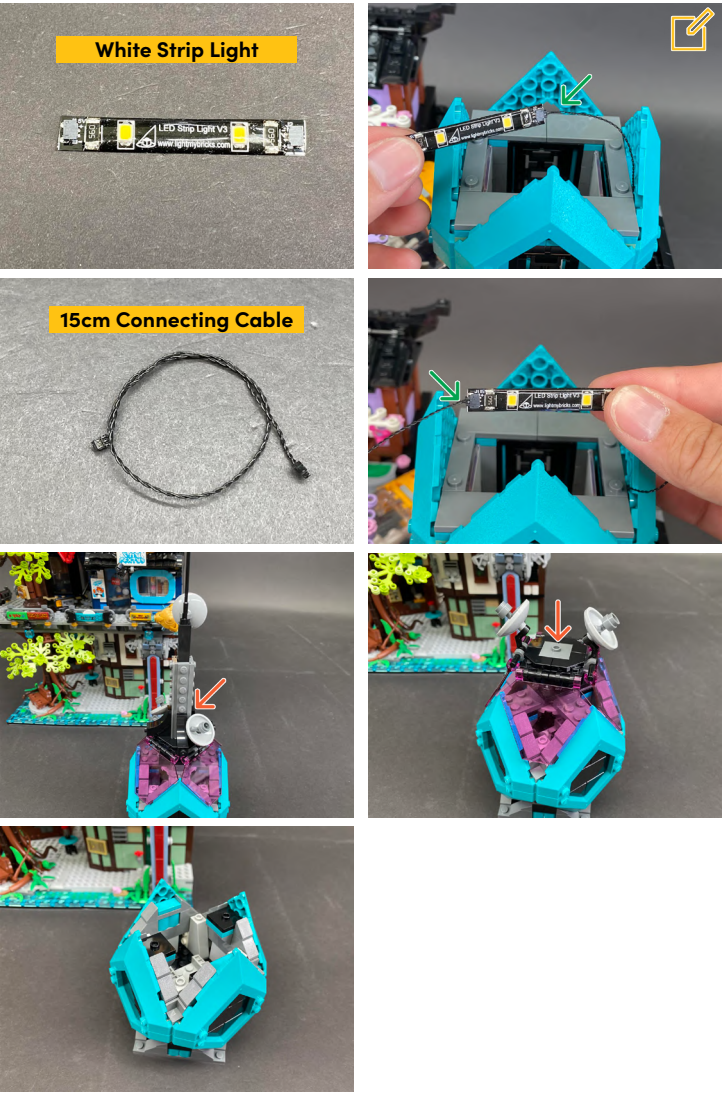



LEGEND: |  DISCONNECT |  CONNECT / RECONNECT |  TURN / FLIP |  DIRECTIONAL |  TWIST / BRAID |  POWER ON / TEST




85.

 Connect the 15cm Connecting Cable from previous step.

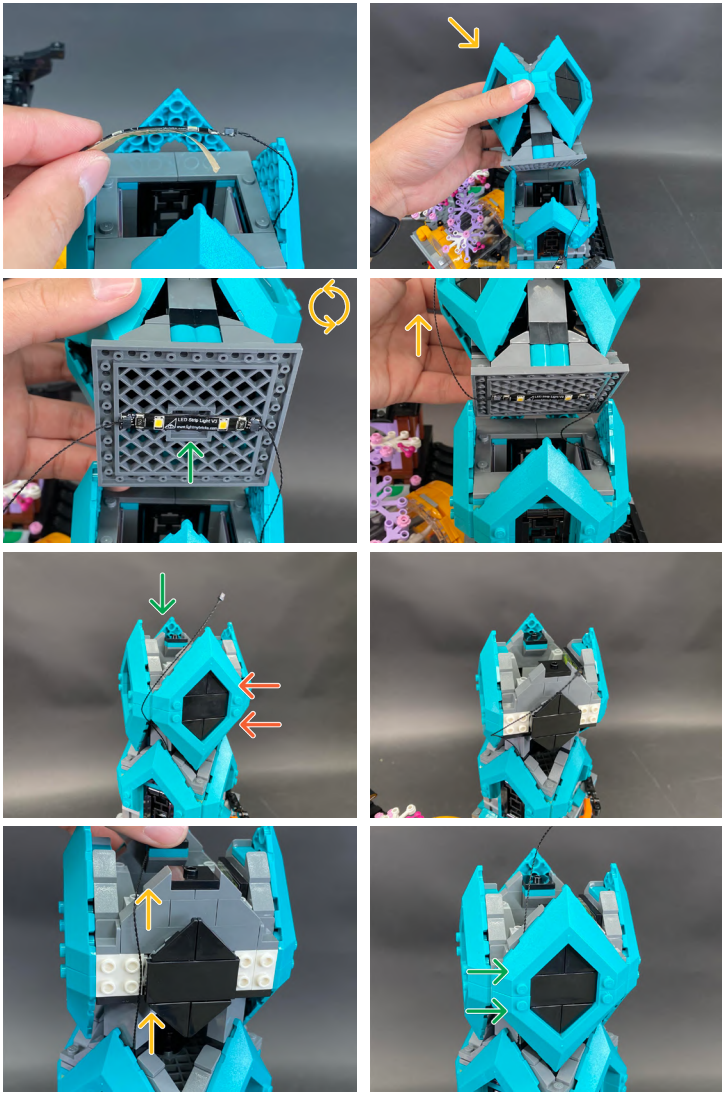


 If you experience any issues with the lights not working and suspect an issue with a component, please try a different port on the expansion board to verify where the fault lies (with the light or expansion board). To correct any issues with expansion board ports, please view the section addressing expansion board issues on our online troubleshooting guide.

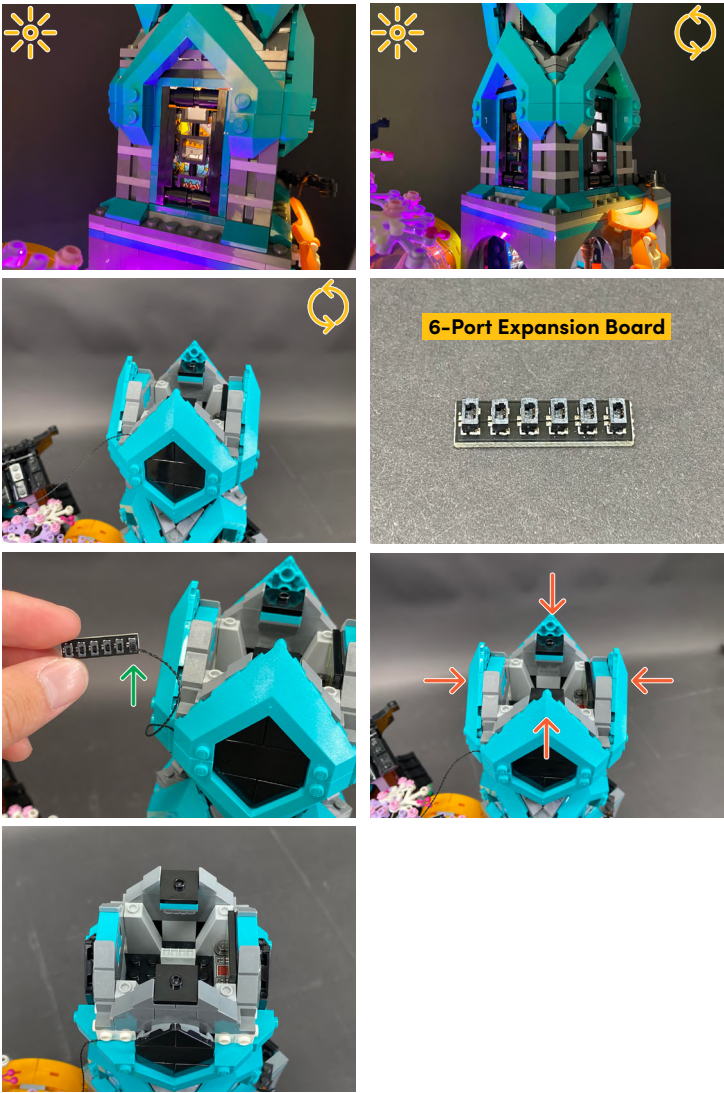



LEGEND: |  DISCONNECT |  CONNECT / RECONNECT |  TURN / FLIP |  DIRECTIONAL |  TWIST / BRAID |  POWER ON / TEST

86.



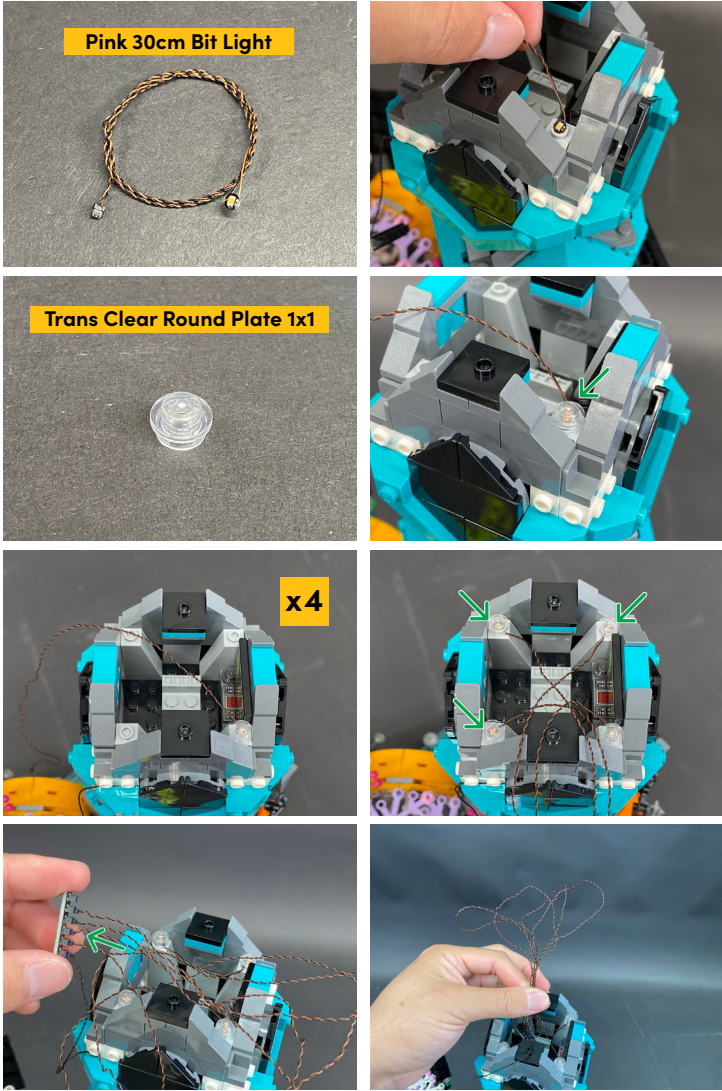
87.



 If you experience any issues with the lights not working and suspect an issue with a component, please try a different port on the expansion board to verify where the fault lies (with the light or expansion board). To correct any issues with expansion board ports, please view the section addressing expansion board issues on our online troubleshooting guide.



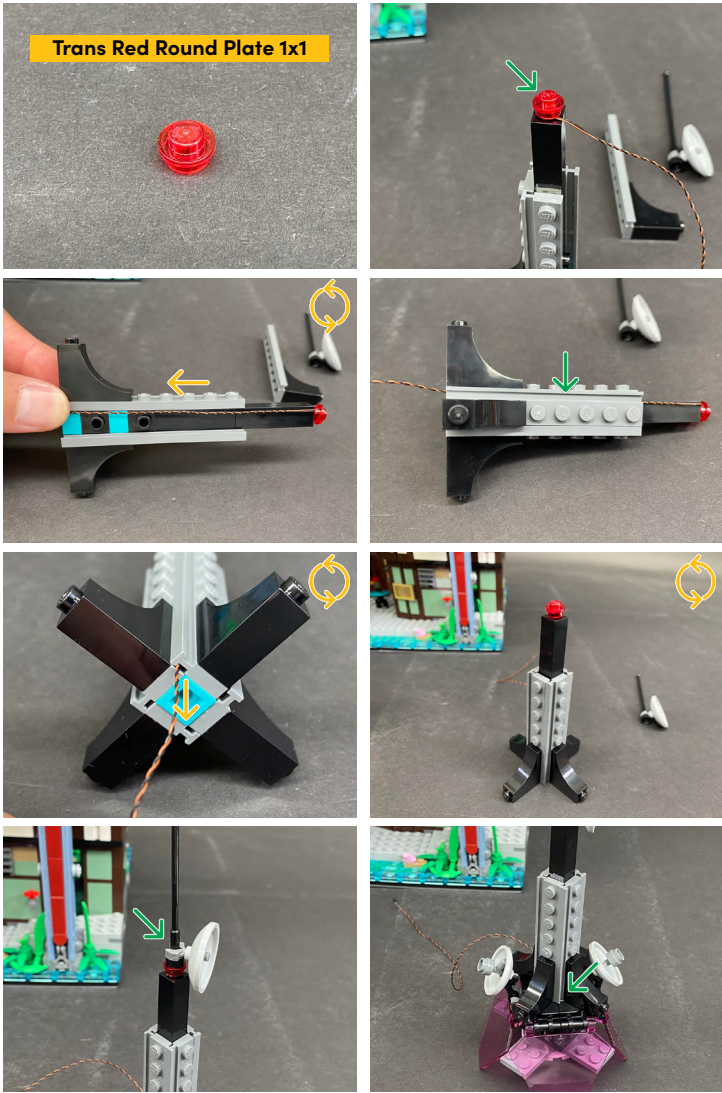
88.



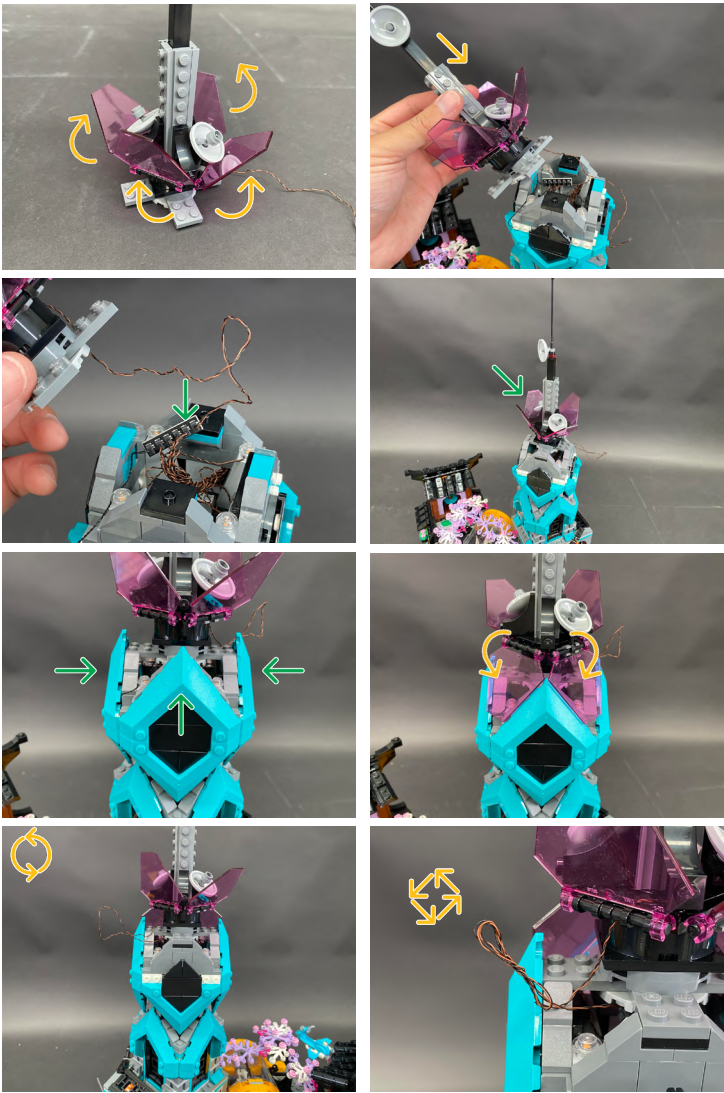
89.





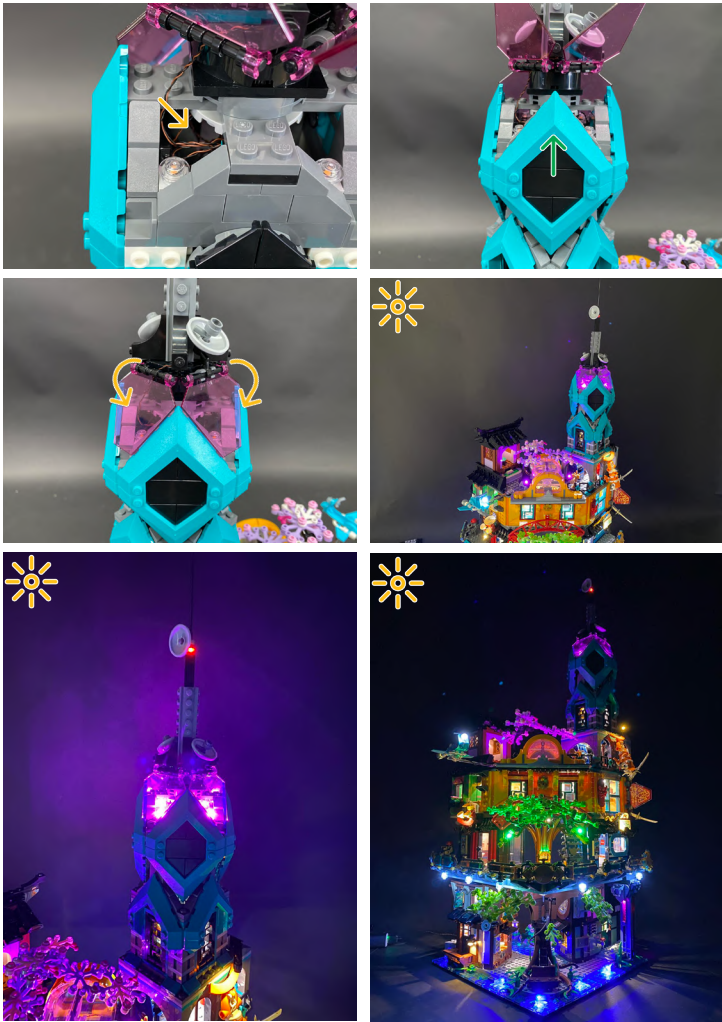


90.

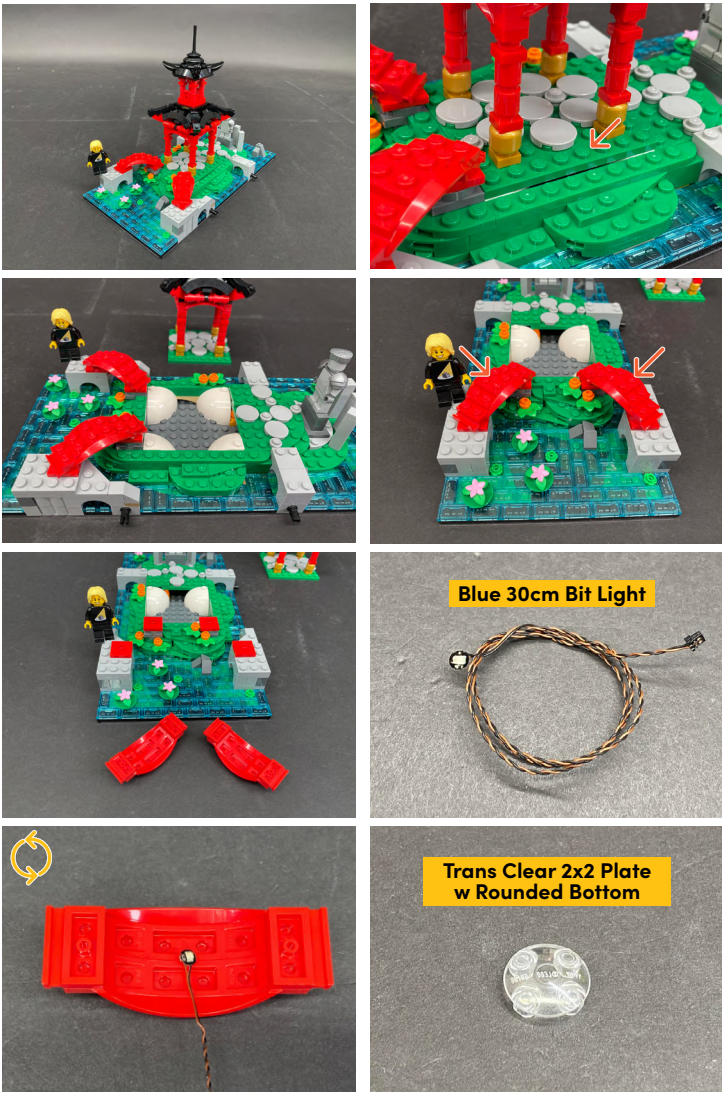





LEGEND: |  DISCONNECT |  CONNECT / RECONNECT |  TURN / FLIP |  DIRECTIONAL |  TWIST / BRAID |  POWER ON / TEST



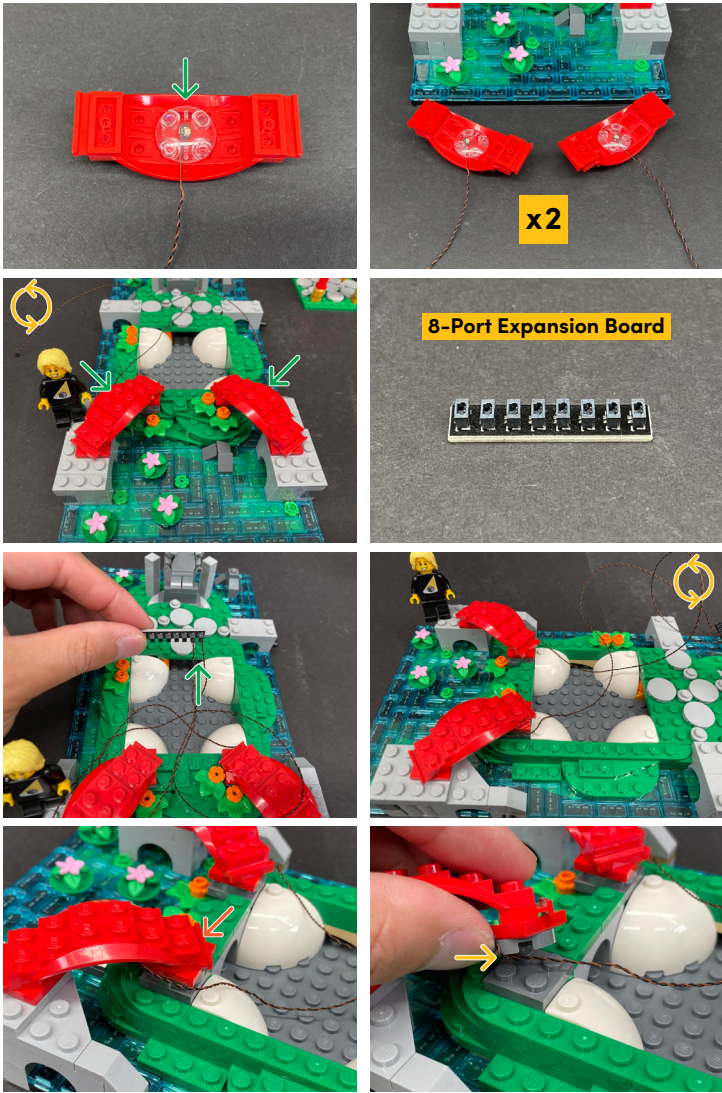
91.



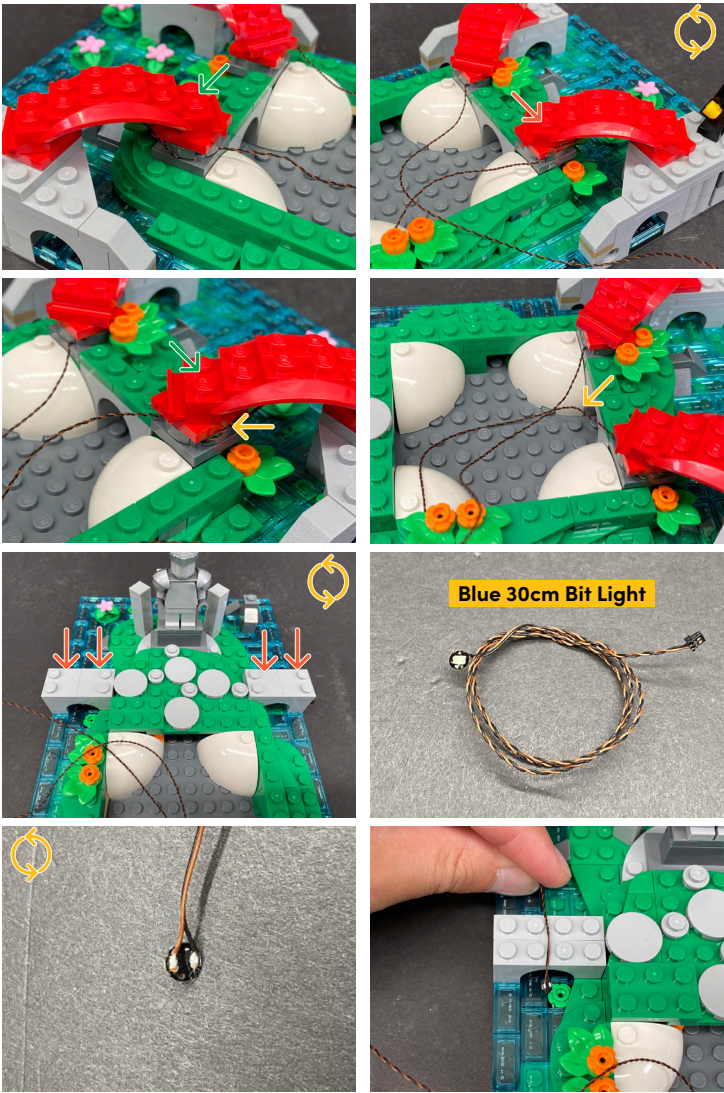
 If you experience any issues with the lights not working and suspect an issue with a component, please try a different port on the expansion board to verify where the fault lies (with the light or expansion board). To correct any issues with expansion board ports, please view the section addressing expansion board issues on our online troubleshooting guide.



92.

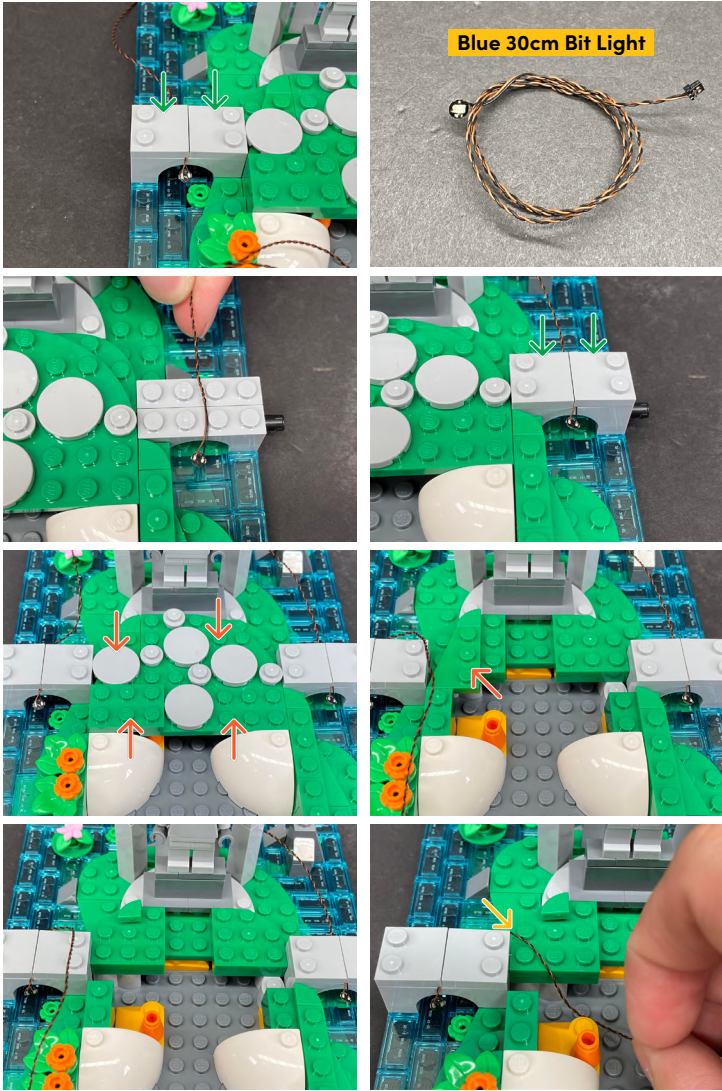


93.

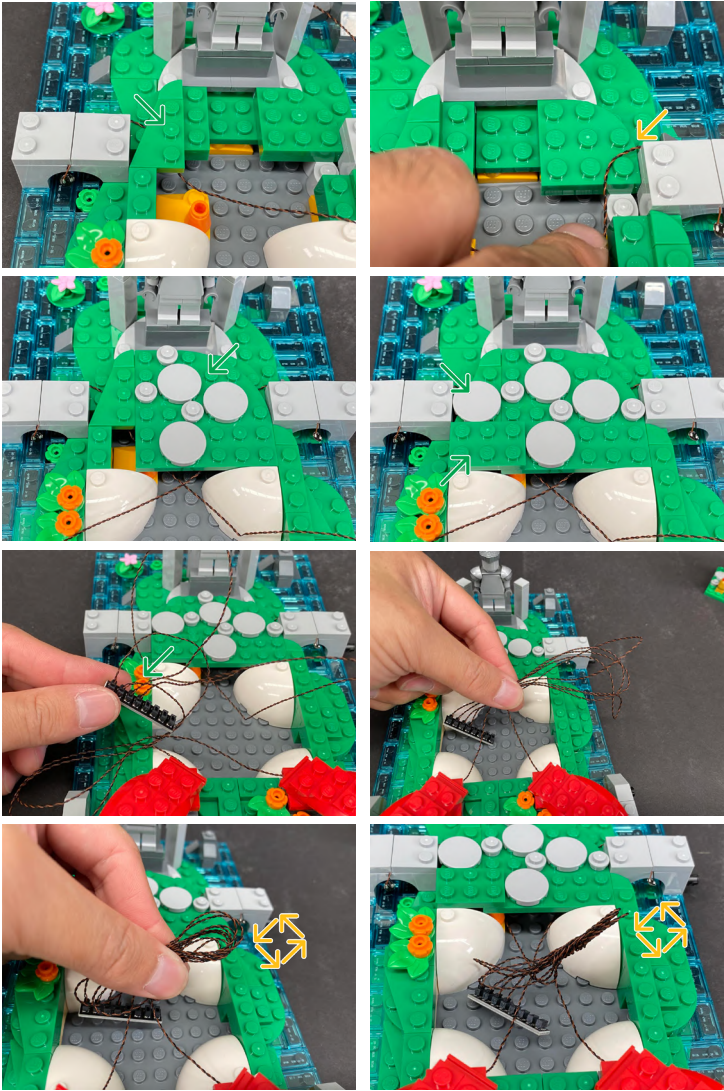




94.

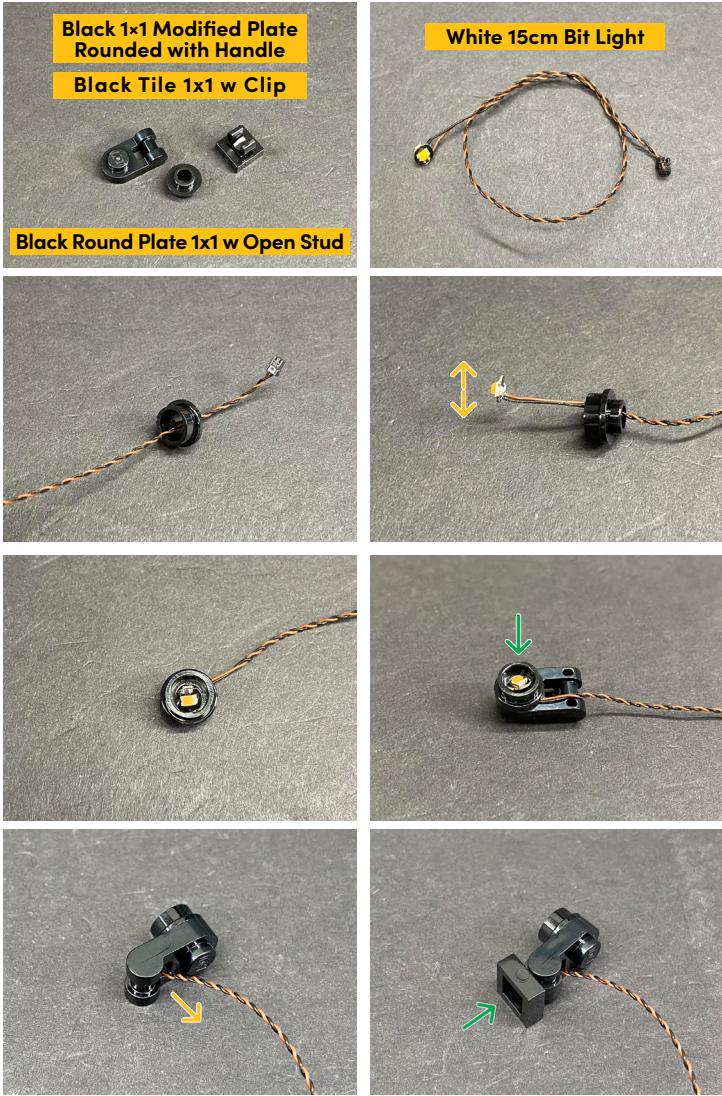


95.

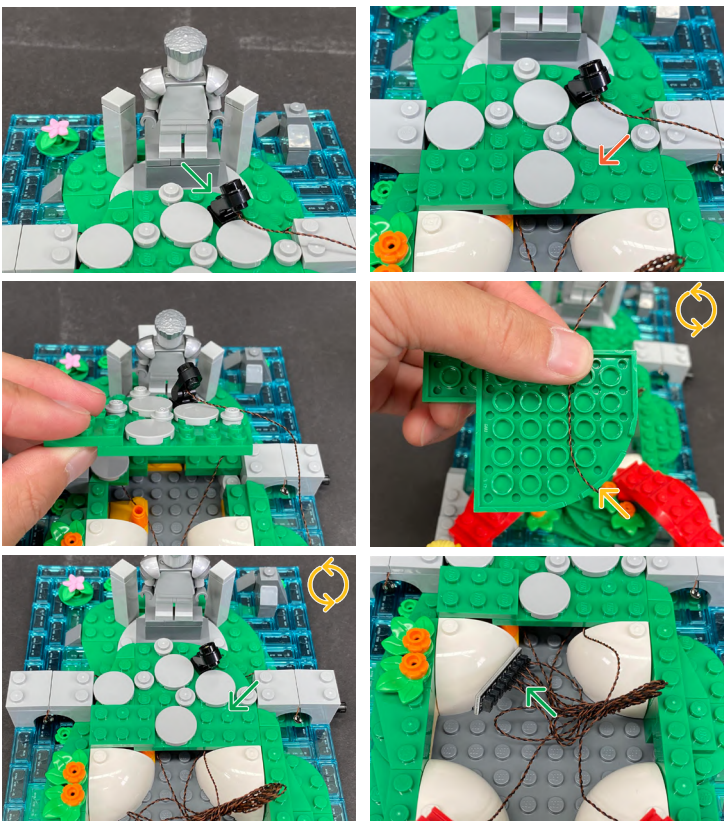




96.

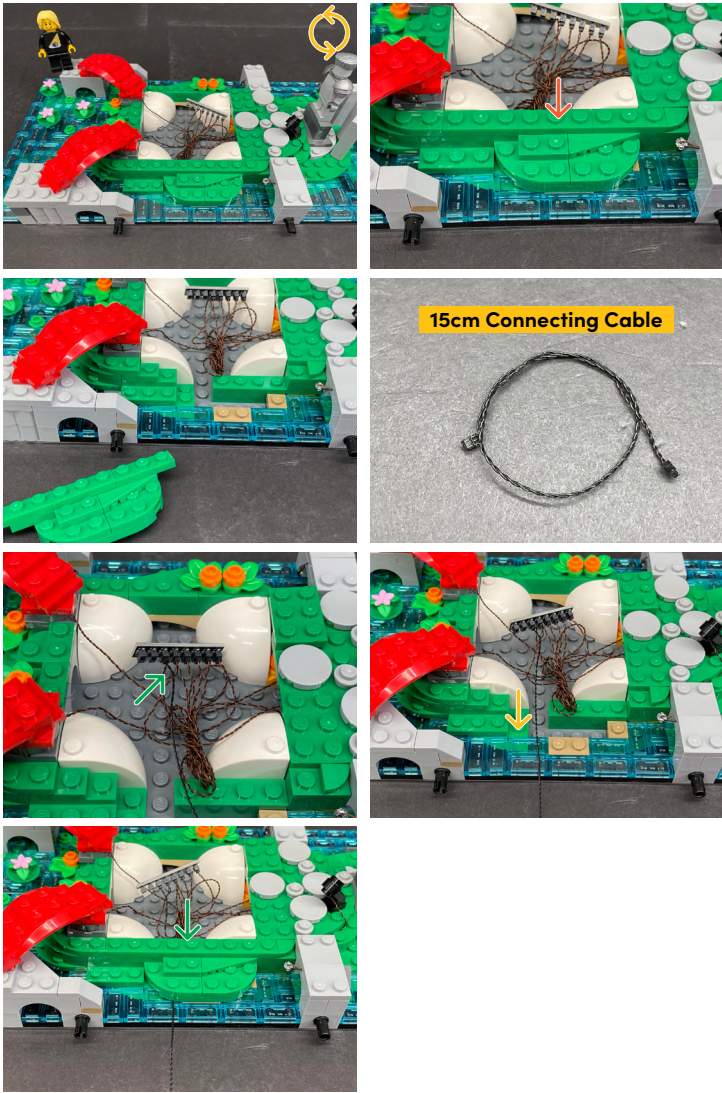


97.






98.



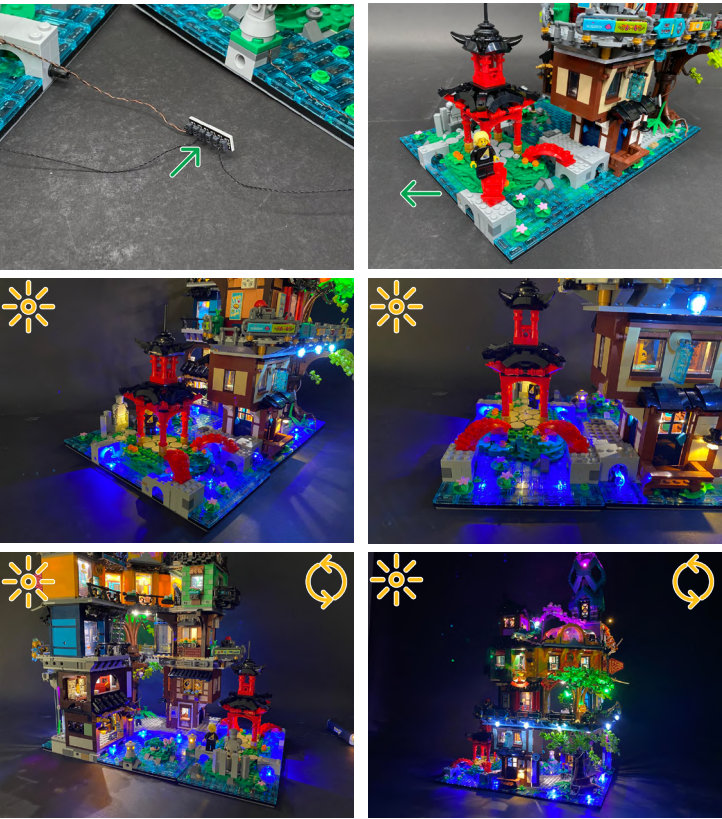
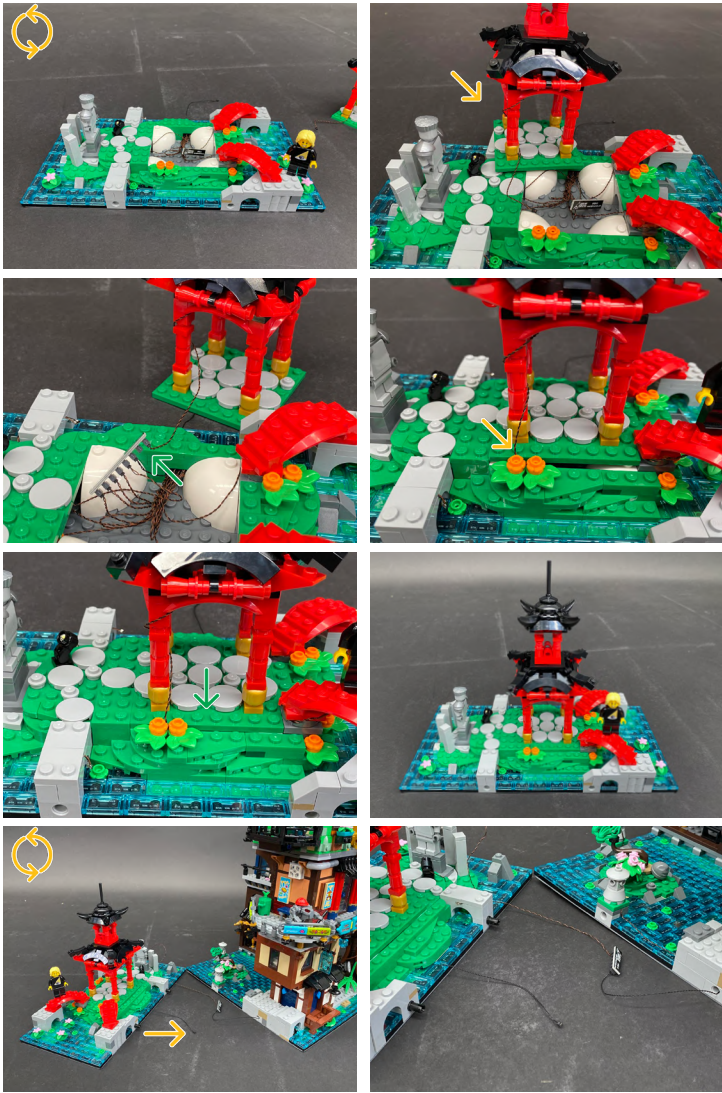
99.





LEGEND: |  DISCONNECT |  CONNECT / RECONNECT |  TURN / FLIP |  DIRECTIONAL |  TWIST / BRAID |  POWER ON / TEST

100.

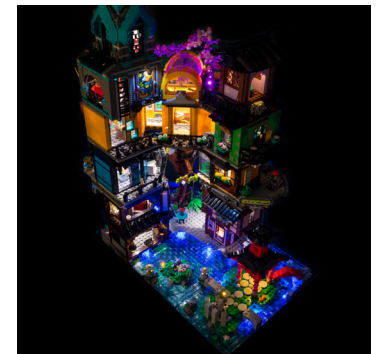
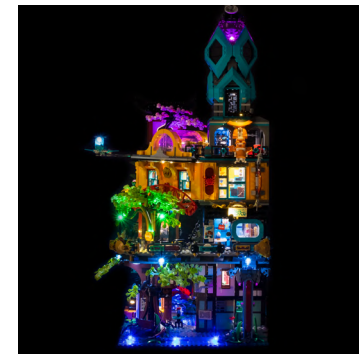


If you experience any issues with the lights not working and suspect an issue with a component, please try a different port on the expansion board to verify where the fault lies (with the light or expansion board). To correct any issues with expansion board ports, please view the section addressing expansion board issues on our online troubleshooting guide.



# Final Product

This finally completes installation of the Light My Bricks Ninjago City Gardens #71741 Light Kit.





# Troubleshooting

Light My Bricks lighting kits contain individual components that are very small and can be easily damaged if not handled correctly.

To prevent unnecessary damage to components, we highly recommend that the User Guide section, “Important things to note” is read carefully. Follow the handling procedures in the User Guide to help prevent faults and damages to your Light My Bricks components.

If you are experiencing issues with your Light My Bricks set, watch our troubleshooting video [here](#) or read on for a list of common causes to help you troubleshoot.



# Troubleshooting

Firstly, ensure that the batteries have power using a battery charge gauge.

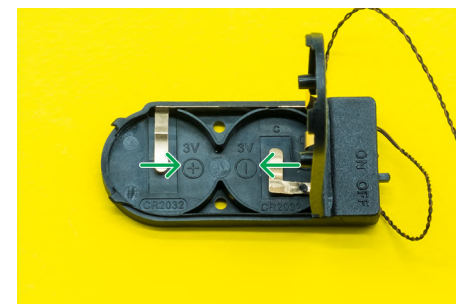
If the batteries have no power, replace the batteries.

If the batteries still have power, check to see if the batteries have been inserted correctly into the battery pack.

## CHECK FOR CR2032 BATTERIES USING THE FLAT BATTERY PACK

Inside the battery pack is a symbol indicating which side the (round) CR2032 battery should be inserted. Check that the "+" side of the battery pack has the battery with the "+" symbol facing downwards.

On the opposite side, the "-" side of the battery pack should have the battery flipped upside down, that is the "+" symbol facing upwards.

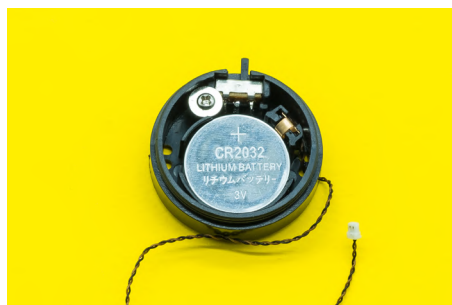




# Troubleshooting

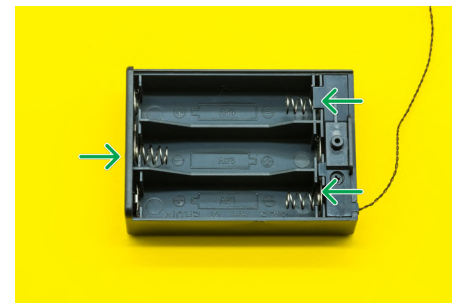
## CHECK FOR CR2032 BATTERIES USING THE ROUND BATTERY PACK

Inside the battery pack is a symbol indicating which side the (round) CR2032 battery should be inserted. In this case, for the stacked battery pack, ensure that BOTH batteries have the "+" symbol facing upwards.



## CHECK FOR AA BATTERIES USING THE AA BATTERY PACK

Inside the battery pack are symbols indicating which direction the AA battery should be inserted. The flat side of the battery should be paired with the spring side of the battery pack.



If the batteries have been installed correctly and your kit still isn't operating correctly, the next step is to check the wiring.



# Troubleshooting

## CHECK YOUR WIRES

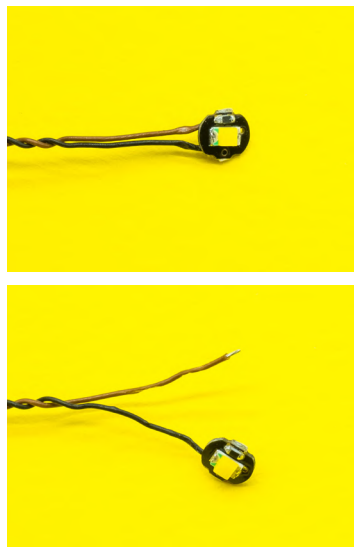
In order for Light My Bricks components to fit in between and underneath LEGO® bricks, the components need to be very small.

Due to this nature, Light My Bricks components can be easily damaged when not handled correctly.

Be careful when removing unpacked components out of the packaging and ensure not to forcibly pull at the wires as this can damage the soldering that attach the wires to the LEDs.

If the wiring is detached from the LED itself, the light will not operate.

When connecting lights to your LEGO set, check that there are no pinched wires underneath or in between bricks and plates. When the wires are pinched and the exposed wires are touching each other, this can cause a crosswire and the lights to not function correctly.



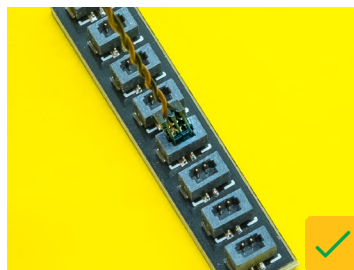
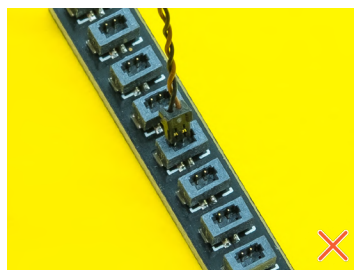


# Troubleshooting

## CHECK YOUR EXPANSION BOARD PORTS/ STRIP LIGHT PORTS / EFFECTS BOARD PORTS

It is important to note that connectors can only be inserted to the expansion board, strip light, or effects board ports in one direction.

Forcibly inserting connectors in the incorrect direction will result in damaging the pins inside each of the ports on your component board.

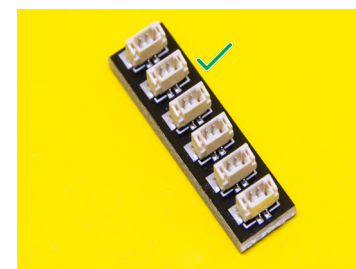
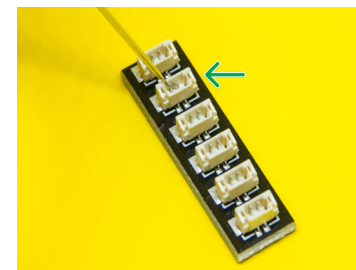
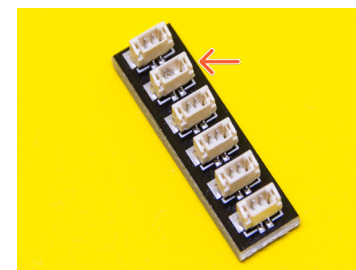


Not only will a light connected to the damaged port not work, but if the pins inside the port are bent to a point they are touching each other, this can result in all other lights in the system to stop working. This is a short circuit.

A short circuit can also result in overheating of the board, cable or batteries. If you suspect a short circuit, **DISCONNECT POWER IMMEDIATELY**. Batteries can fail, catch fire, or even explode if left connected to a short circuit for too long.

If you suspect you have a faulty component due to a bent pin, try the following steps:

If you look carefully inside each of the ports, each port contains 2 small pins that should be straight. You will be able to identify a faulty port if it has any bent pins.





## Contact Us

If you have an enquiry regarding the online shop, our products or a general enquiry please refer to our Frequently Asked Questions webpage here.

Alternatively, you can contact our Customer Services team by visiting our online support portal here.

[support.lightmybricks.com](https://support.lightmybricks.com)



We thank you for purchasing this product and hope you enjoy!



**LIGHT<sup>MY</sup>  
BRICKS**

[lightmybricks.com](http://lightmybricks.com)

---