

Light My Bricks

LEGO® Harry Potter Diagon Alley 75978 Light Kit Installation Guide Part 1



Hi There, we're Light My Bricks!

We're here to help you get started on Part 1 of the LEGO® Harry Potter Diagon Alley (75978) Lighting Kit.

This PDF details the instructions for the LED light kit only. If you are wishing to purchase this LED Lighting Kit, please [click here](#) to view the product page.

If you run into any issues, please refer to the troubleshooting section towards the end of this guide.

Have fun and enjoy!



TOTAL PACKAGE CONTENTS:

- 22 × White 15cm Bit Lights (requires 21, includes extra)
- 13 × White 30cm Bit Lights (requires 12, includes extra)
- 2 x Warm White 15cm Large Bit Lights
- 1 x Warm White 30cm Large Bit Lights
- 2 x White 30cm Micro Bit Lights
- 7 x Warm White Strip Lights
- 2 x Multi-Colour Strip Lights
- 1 x Multi Colour Light String

- 2 x 2-Port Expansion Boards
- 8 x 6-Port Expansion Boards
- 3 x 8-Port Expansion Boards
- 1 x Micro 2-4 Port Expansion Board
- 1 x Flicker Effects Board

- 6 x 5cm Connecting Cables
- 6 x 15cm Connecting Cables
- 5 x 30cm Connecting Cables
- 6 x 50cm Connecting Cables

- 1 x USB Power Cable
- 16 x Adhesive Squares

LEGO PIECES:

- 9 × Trans Clear Plate 2x2 w Rounded Bottom
- 3 × Plate 1x6 (Any Colour)
- 11 × Black Round Plate 1x1 with Open Stud
- 5 × Black Tile 1x1 with Clip Rounded Edges
- 8 × Black 1x1 Modified Plate Rounded with Handle
- 2 × Black Arm Skeleton, Bent with Clips (Horizontal Grip)
- 1 × Trans Clear Round Plate 1x1

Contents

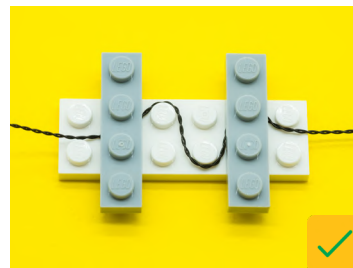
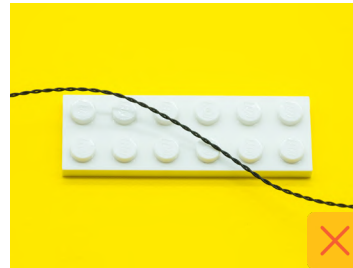
- 4. Before You Begin
- 7. Instructions
- 8. Olive Anders' Wand Shop & Scribbulus
- 27. Quidditch Store & The Daily Prophet
- 42. Part 2
- 43. Troubleshooting
- 48. Contact

Before You Begin

LAYING CABLES IN BETWEEN AND UNDERNEATH BRICKS

Cables can fit in between and underneath LEGO® bricks, plates, and tiles providing they are laid correctly between the LEGO® studs. Do NOT forcefully join LEGO® together around cables; instead ensure they are laying comfortably in between each stud.

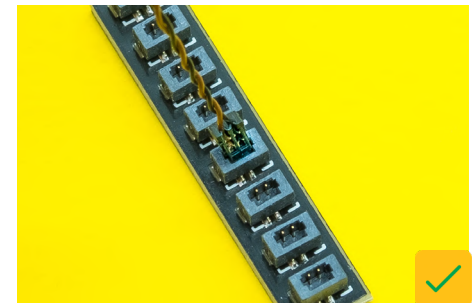
CAUTION: Forcing LEGO® to connect over a cable can result in damaging the cable and light.



CONNECTING CABLE CONNECTORS TO EXPANSION BOARDS

Take extra care when inserting connectors to ports of Expansion Boards. Connectors can be inserted only one way. With the expansion board facing up, look for the soldered “=” symbol on the left side of the port. The connector side with the wires exposed should be facing toward the soldered “=” symbol as you insert into the port. If a plug won't fit easily into a port connector, do not force it.

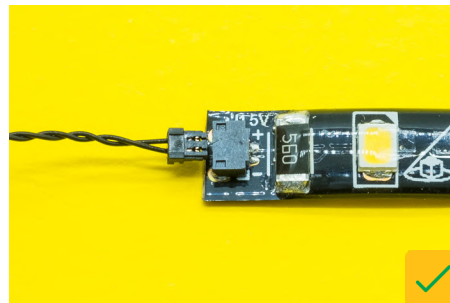
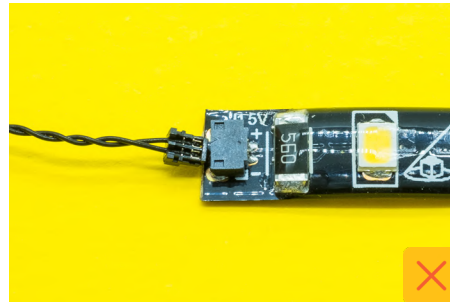
Incorrectly inserting the connector can result in bent pins inside the port or possible overheating of the expansion board when connected.



Before You Begin

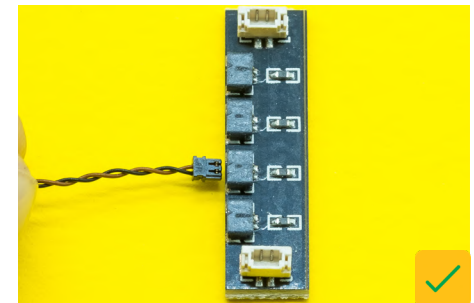
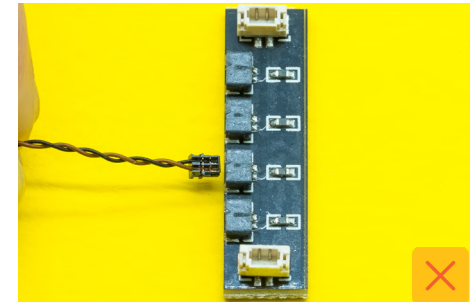
CONNECTING CABLE CONNECTORS TO STRIP LIGHTS

Take extra care when inserting connectors to ports on the Strip Lights. Connectors can be inserted only one way. With the Strip Light facing up, ensure the side of the connector with the wires exposed is facing down. If a plug won't fit easily into a port connector, don't force it. Doing so will damage the plug and the connector.



CONNECTING MICRO CABLE CONNECTORS TO MICRO EXPANSION BOARD PORTS

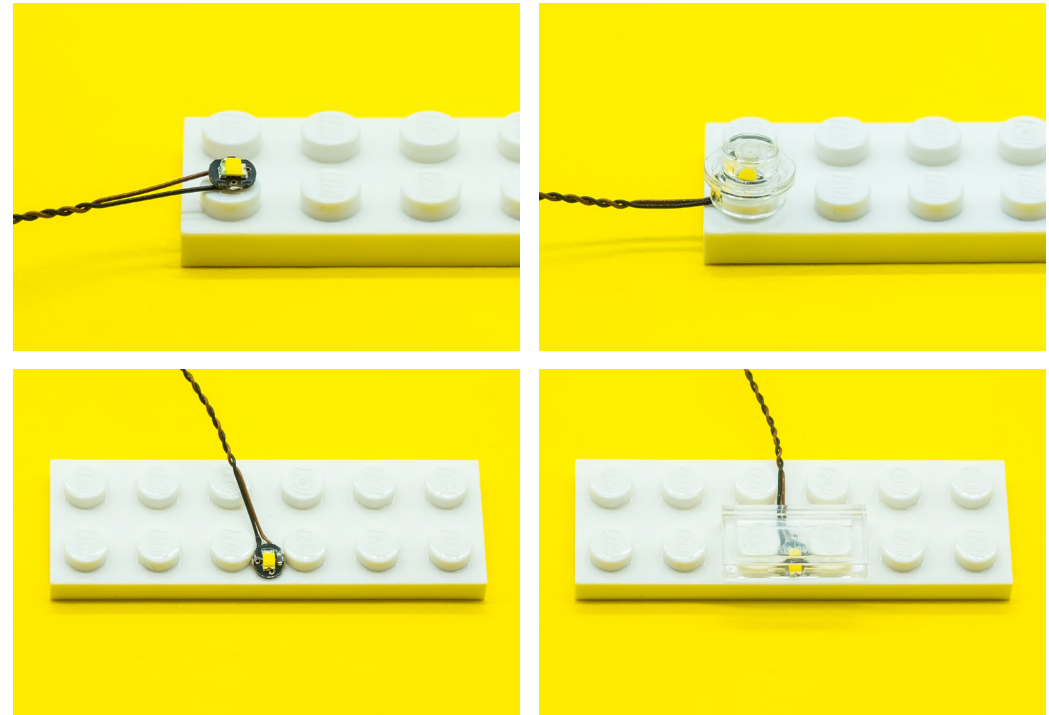
Take extra care when inserting the micro connectors to micro ports of Micro Expansion Boards. Connecting Micro Bit Lights to Micro Expansion Boards is similar to connecting lights and cables to Strip Lights. With the expansion board facing up, ensure the side of the connector with the wires exposed is facing down. If a plug won't fit easily into a port connector, do not force it. Use your fingernail to push the plastic part of the connector to the micro port.



Before You Begin

INSTALLING BIT LIGHTS UNDER LEGO® BRICKS AND PLATES

When installing Bit Lights under LEGO® pieces, ensure they are placed the correct way up (Yellow LED component exposed). You can either place them directly on top of LEGO® studs or in between.



Instructions

To ensure a smooth installation of your light kit, please read and follow each step carefully.

If you run into any issues, please refer to the online troubleshooting guide.

Ollivanders' Wand Shop & Scribbulus



PACKAGE CONTENTS FOR THIS SECTION:

- 7 × White 15cm Bit Lights
- 5 × White 30cm Bit Lights
- 2 × White 30cm Micro Bit Lights

- 2 × 6-Port Expansion Boards
- 1 × 8-Port Expansion Board
- 1 × Micro 2-4 Port Expansion Board
- 1 × Flicker Effects Board

- 2 × 5cm Connecting Cables
- 2 × 30cm Connecting Cables

- 1 × USB Power Cable
- 7 × Adhesive Squares

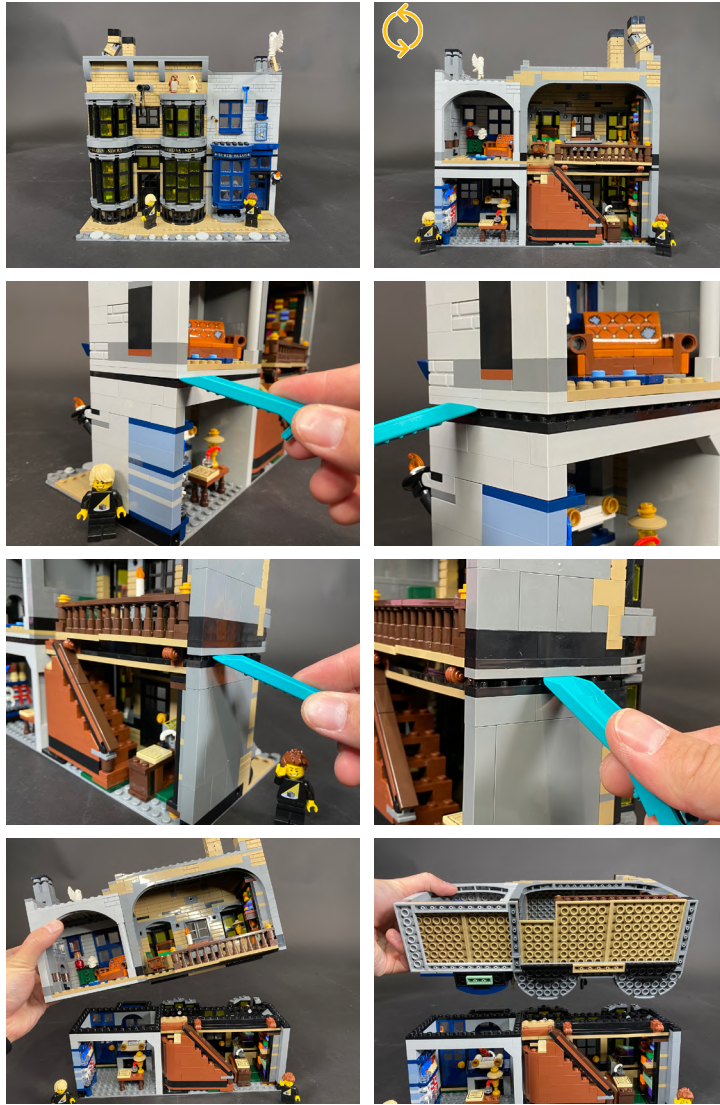
LEGO PIECES:

- 4 × Trans Clear Plate 2x2 w Rounded Bottom
- 3 × Black Round Plate 1x1 with Open Stud
- 3 × Black Tile 1x1 with Clip Rounded Edges
- 3 × Black 1x1 Modified Plate Rounded with Handle

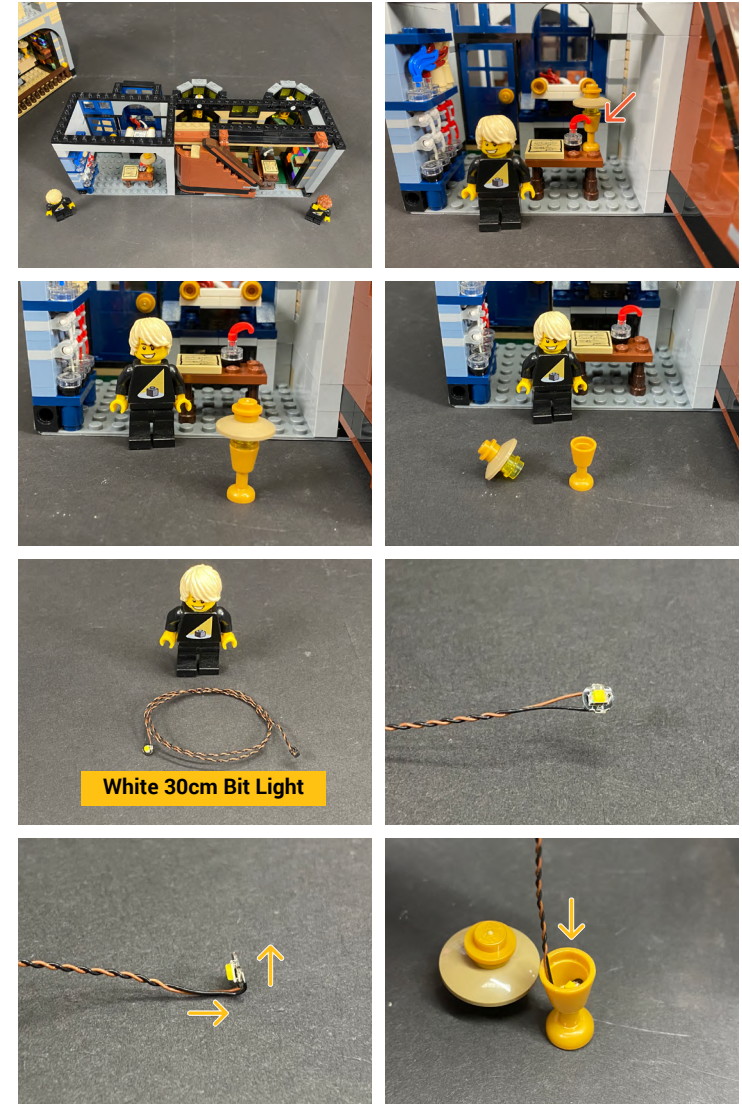
REQUIRED CONTENTS FOR THIS SECTION:

- USB Power Bank or USB Wall Adaptor
(sold separately)

1




2



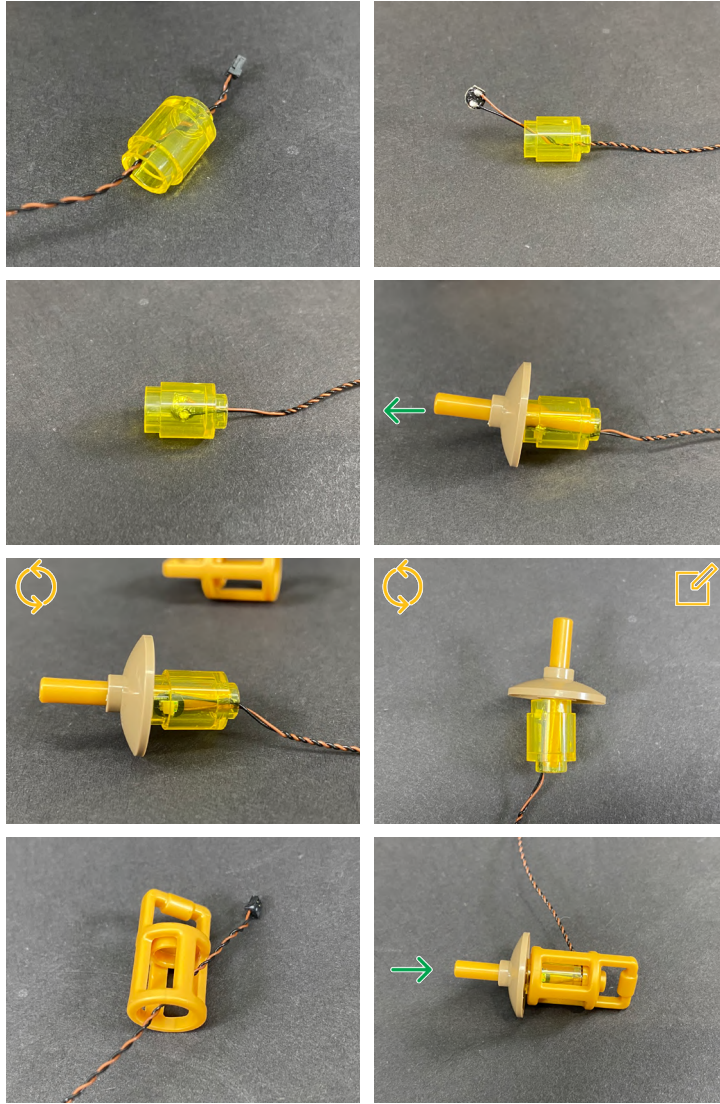
3




 *Optional:
Secure cable to the
wall using tape.

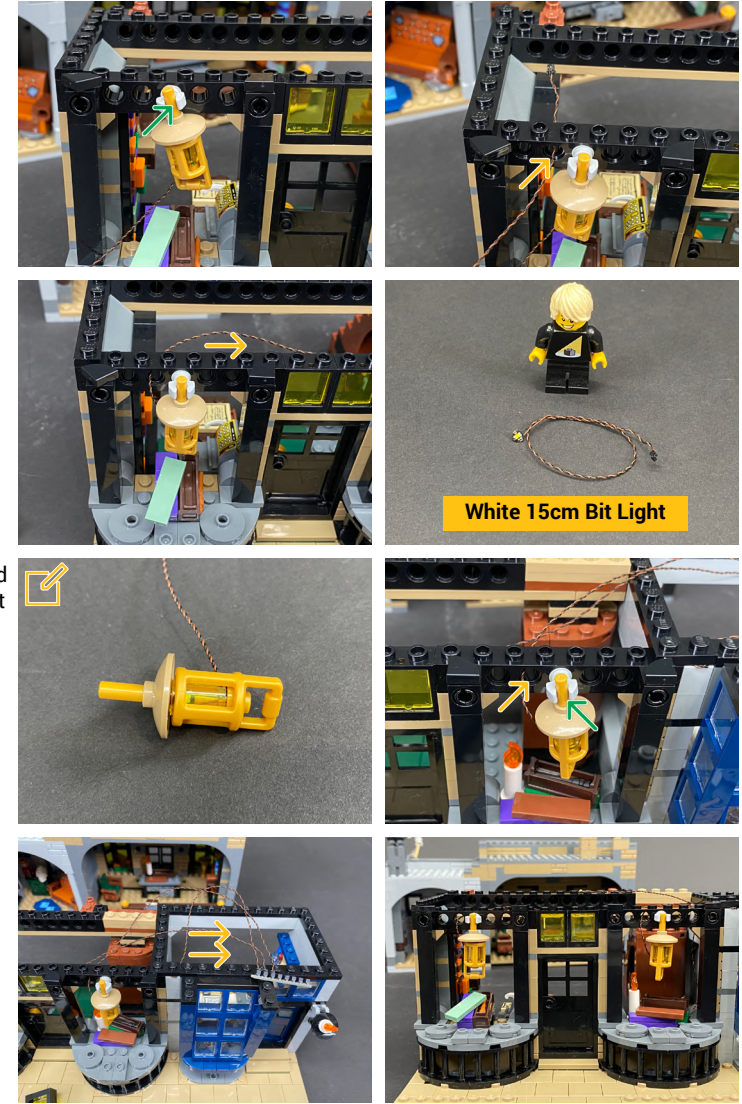
4






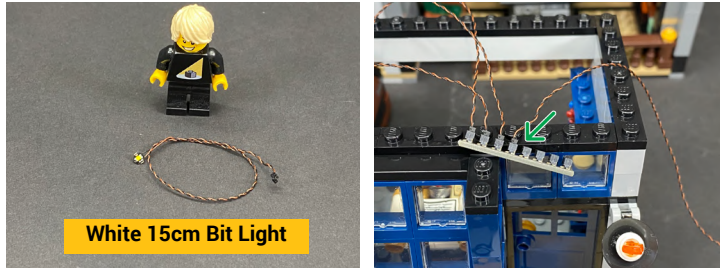
 The Bit Light installed to the lamp will prevent the Gold Bar from aligning straight


5



 Repeat same method used to install the Bit Light to the previous lamp.

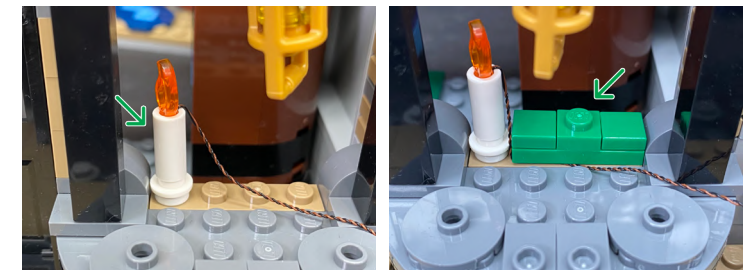
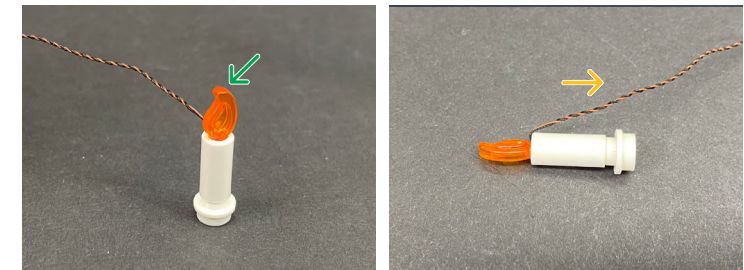
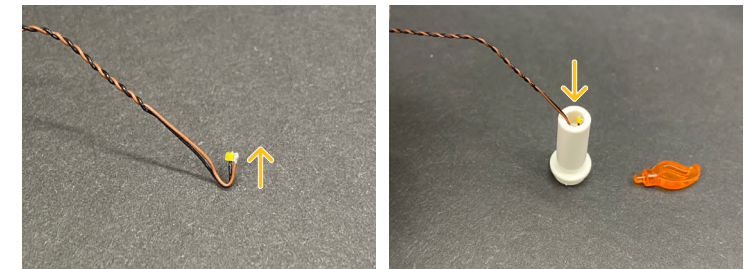
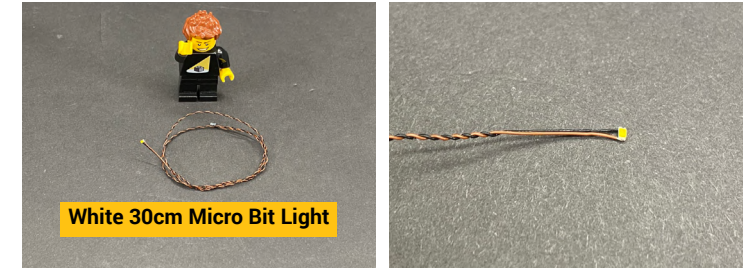
6



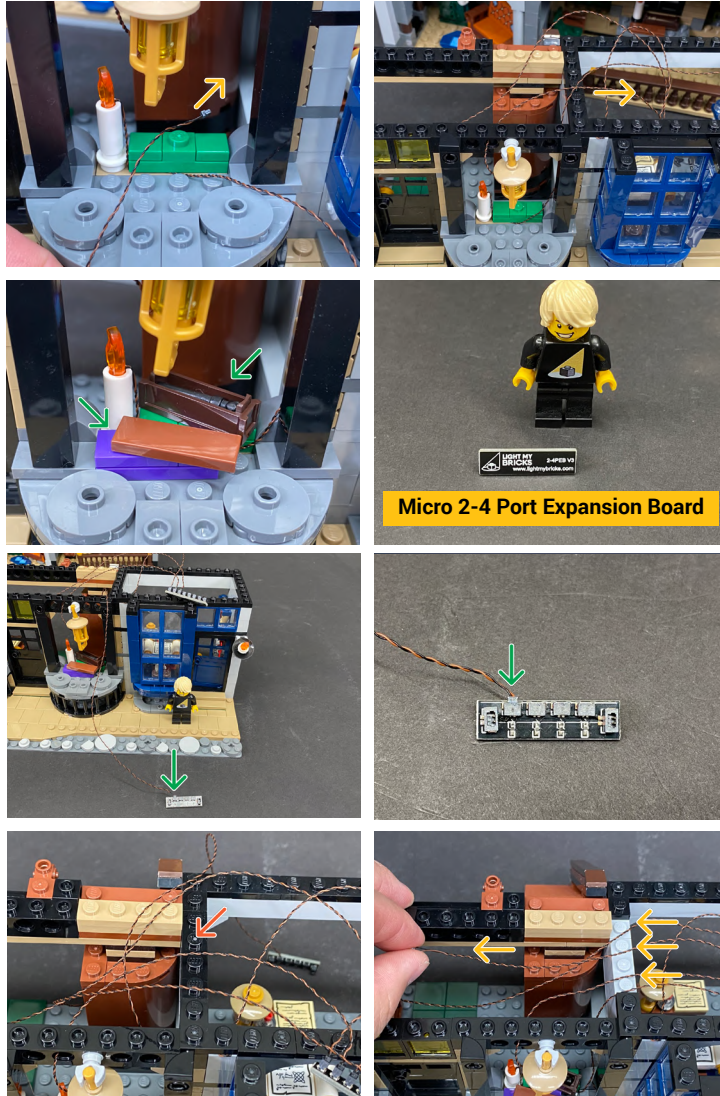
 Bit Light will be used to secure to the ceiling at step 6.



7

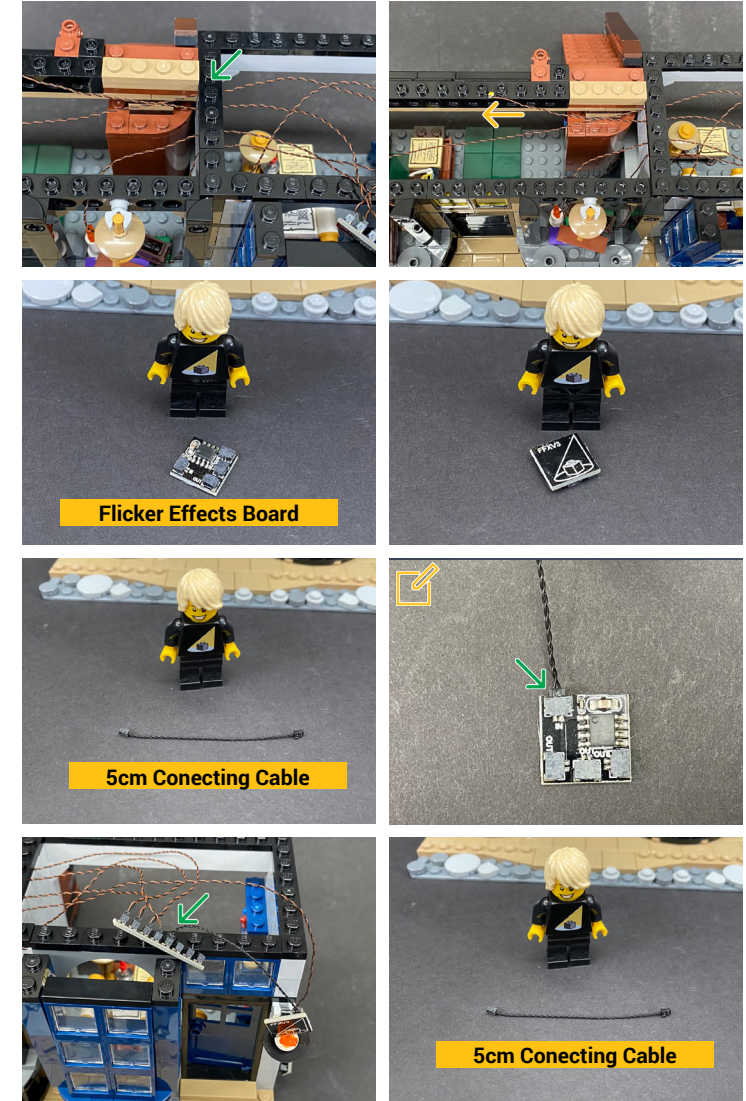


8

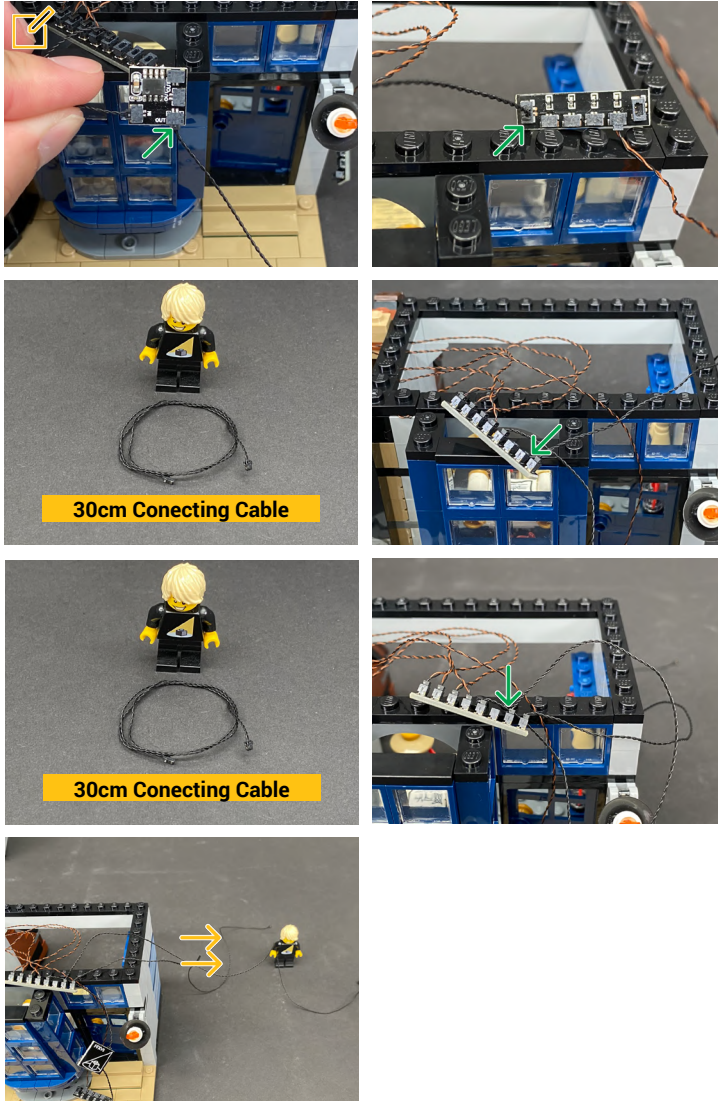


9

Ensure the 5cm Connecting Cable is connected to the IN port



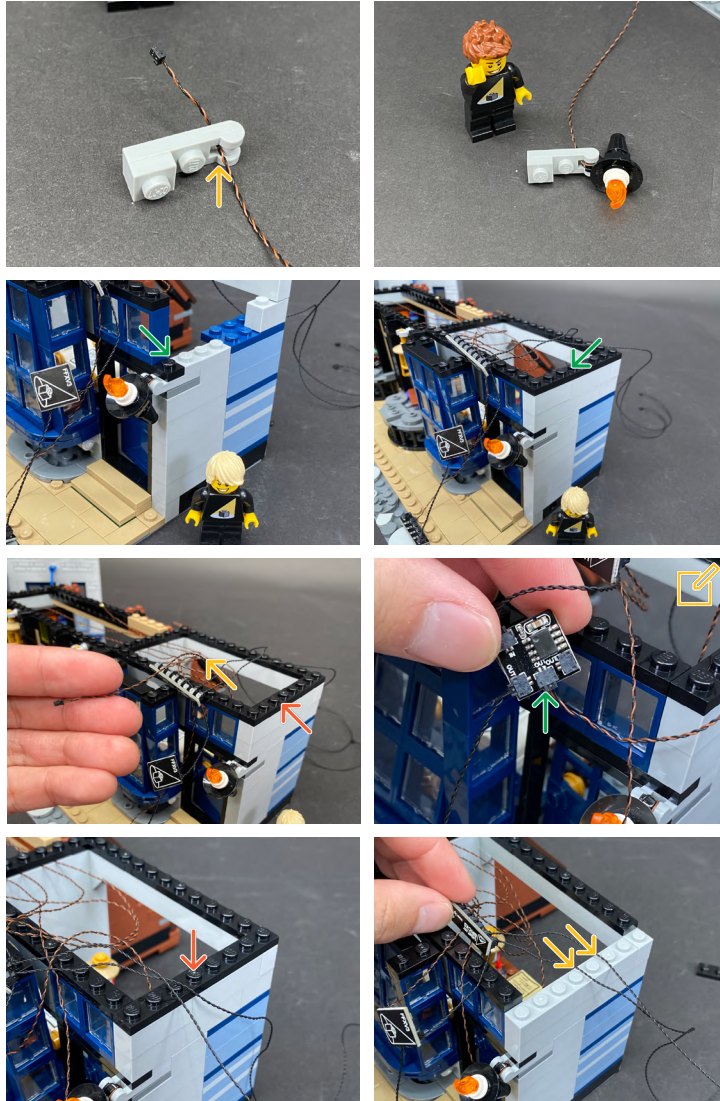
Ensure the 5cm Connecting Cable is connected to one of the OUT ports



10

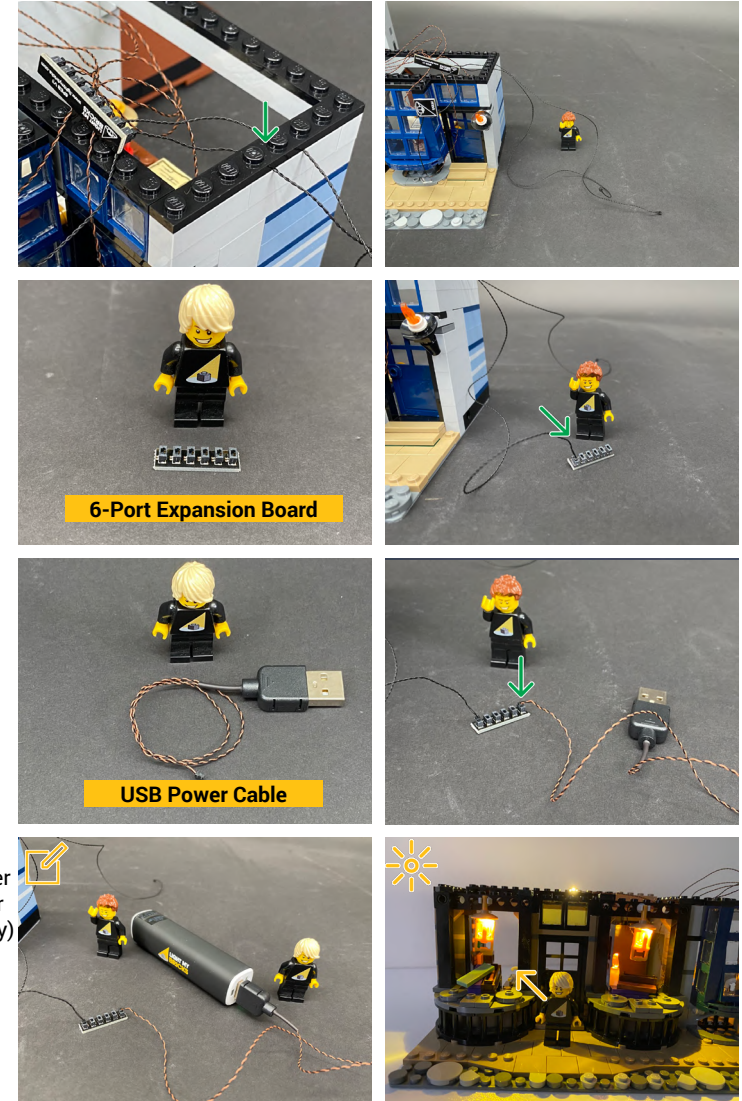


LEGEND: | DISCONNECT | CONNECT / RECONNECT | TURN / FLIP | DIRECTIONAL | TWIST / BRAID | POWER ON / TEST



Ensure the White 15cm Bit Light is connect to one of the OUT ports

11



6-Port Expansion Board

USB Power Cable

Connect USB Power Cable to a USB Power Bank or Wall Adaptor (each sold separately)

If you experience any issues with the lights not working and suspect an issue with a component, please try a different port on the expansion board to verify where the fault lies (with the light or expansion board). To correct any issues with expansion board ports, please view the section addressing expansion board issues on our online troubleshooting guide.

LEGEND: DISCONNECT | CONNECT / RECONNECT | TURN / FLIP | DIRECTIONAL | TWIST / BRAID | POWER ON / TEST

12



White 15cm Bit Light

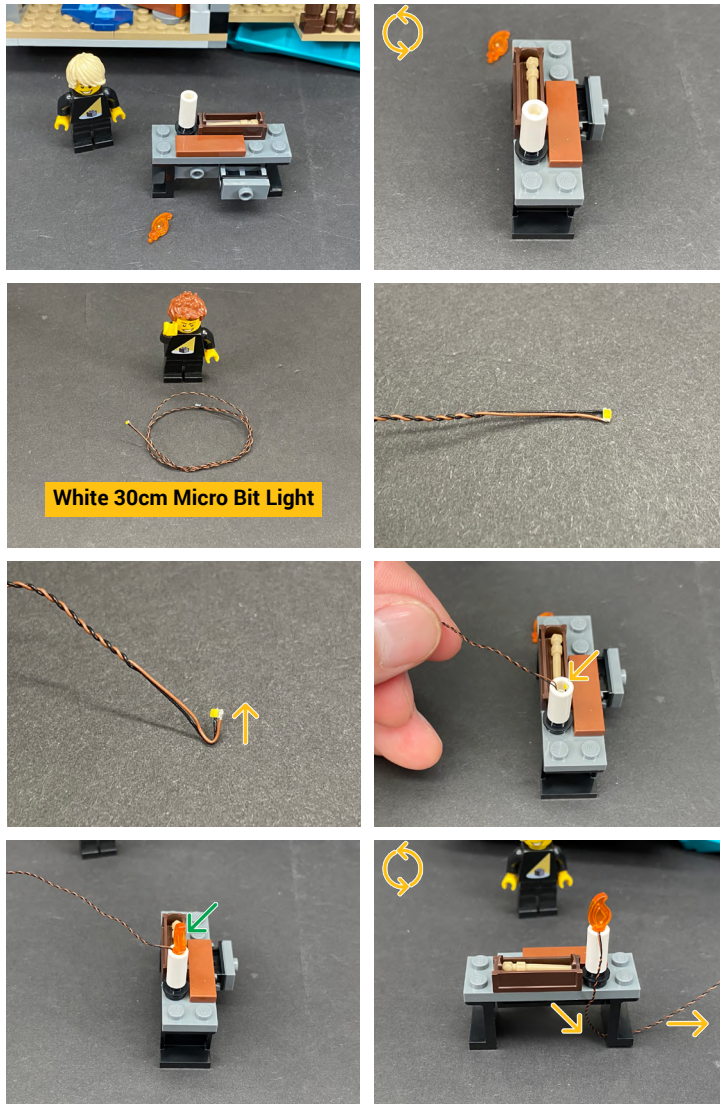
13



Bit Light will be used to secure to the ceiling at step 6.


If you experience any issues with the lights not working and suspect an issue with a component, please try a different port on the expansion board to verify where the fault lies (with the light or expansion board). To correct any issues with expansion board ports, please view the section addressing expansion board issues on our online troubleshooting guide.

14



White 30cm Micro Bit Light




LEGEND: |  DISCONNECT |  CONNECT / RECONNECT |  TURN / FLIP |  DIRECTIONAL |  TWIST / BRAID |  POWER ON / TEST

15



16

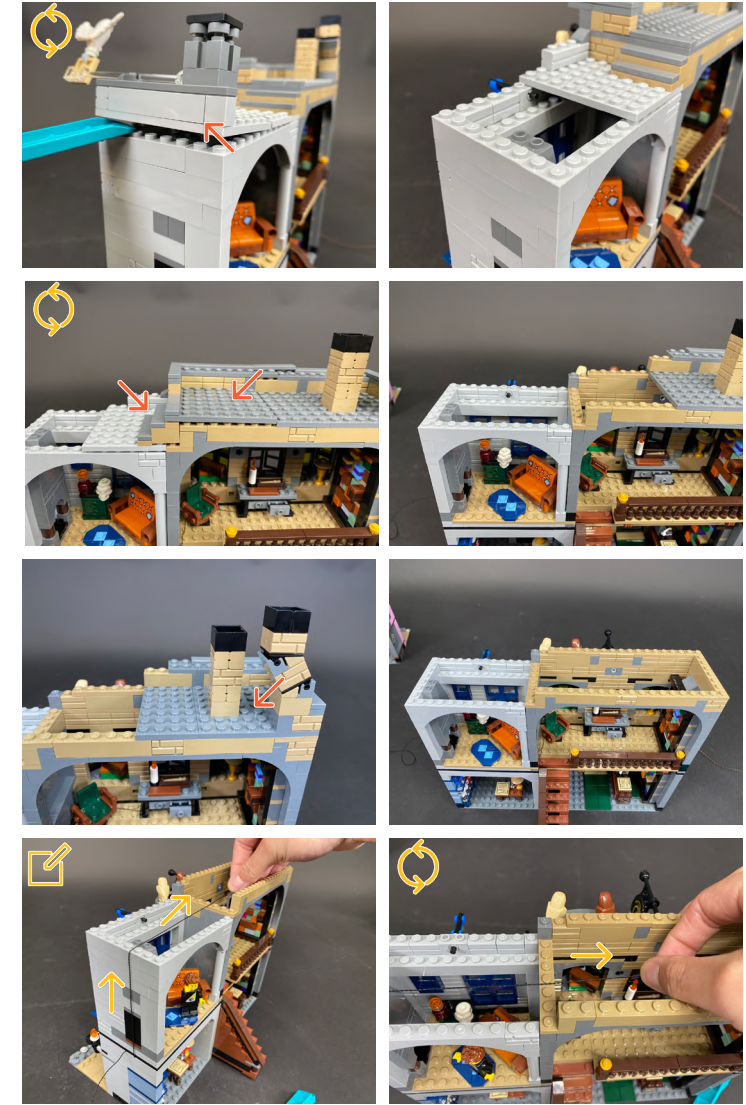



 If you experience any issues with the lights not working and suspect an issue with a component, please try a different port on the expansion board to verify where the fault lies (with the light or expansion board). To correct any issues with expansion board ports, please view the section addressing expansion board issues on our online troubleshooting guide.


LEGEND: |  DISCONNECT |  CONNECT / RECONNECT |  TURN / FLIP |  DIRECTIONAL |  TWIST / BRAID |  POWER ON / TEST



17



 The second 30cm Connecting Cable from the 8-Port Expansion Board below

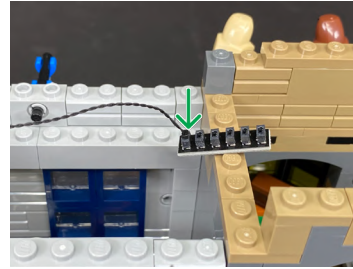
 If you experience any issues with the lights not working and suspect an issue with a component, please try a different port on the expansion board to verify where the fault lies (with the light or expansion board). To correct any issues with expansion board ports, please view the section addressing expansion board issues on our online troubleshooting guide.

LEGEND: | ← DISCONNECT | → CONNECT / RECONNECT | ↻ TURN / FLIP | → DIRECTIONAL | ↻ TWIST / BRAID | ☀ POWER ON / TEST

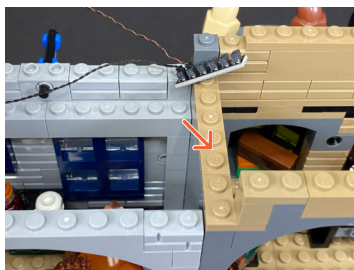
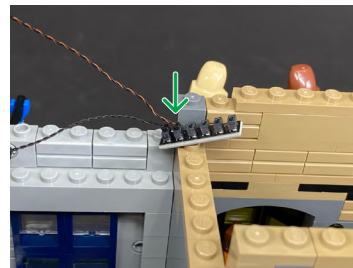
18



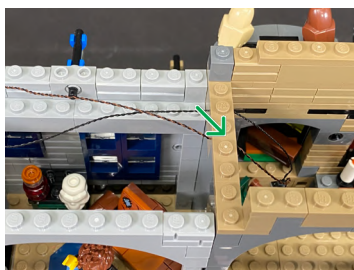
6-Port Expansion Board



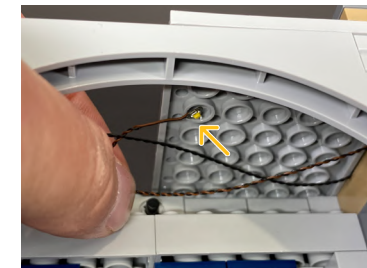
White 15cm Bit Light



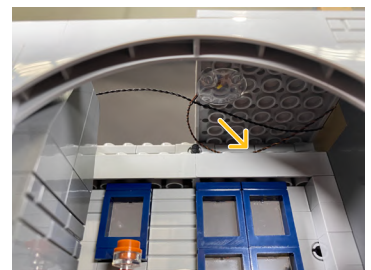
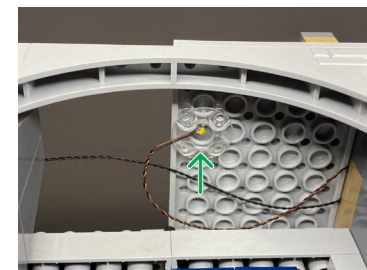
Bring the White 15cm Bit Light over to the left side



19



Trans Clear Plate 2x2 w Rounded Bottom



If you experience any issues with the lights not working and suspect an issue with a component, please try a different port on the expansion board to verify where the fault lies (with the light or expansion board). To correct any issues with expansion board ports, please view the section addressing expansion board issues on our online troubleshooting guide.

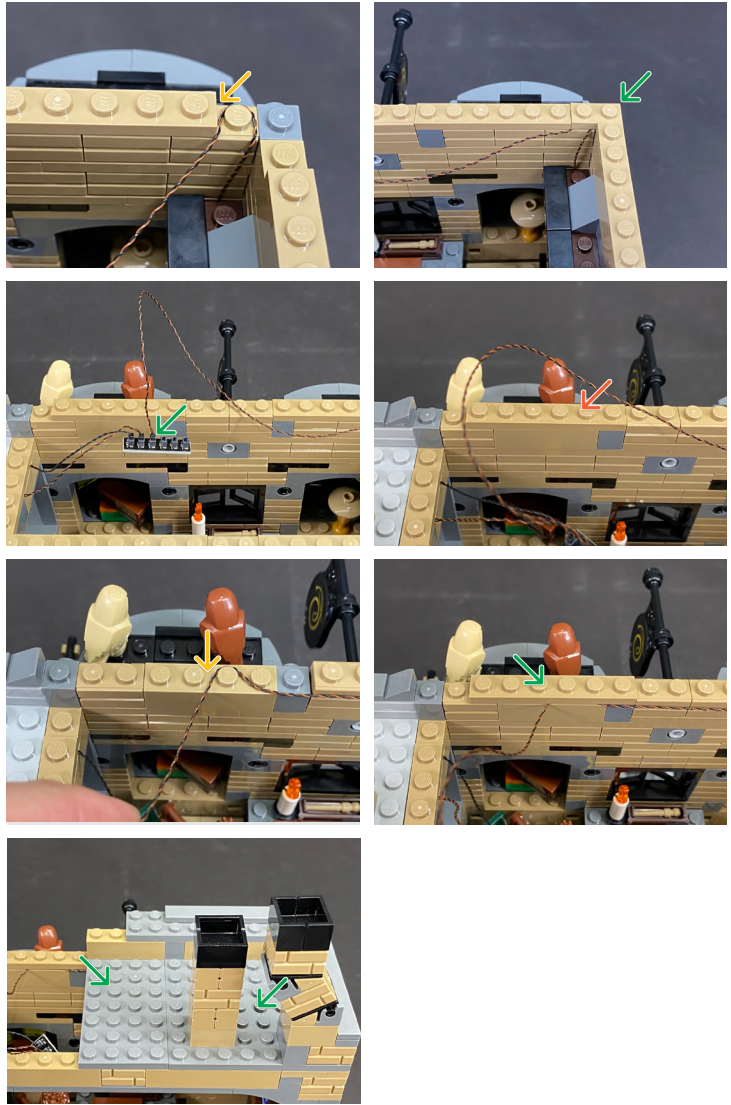
20



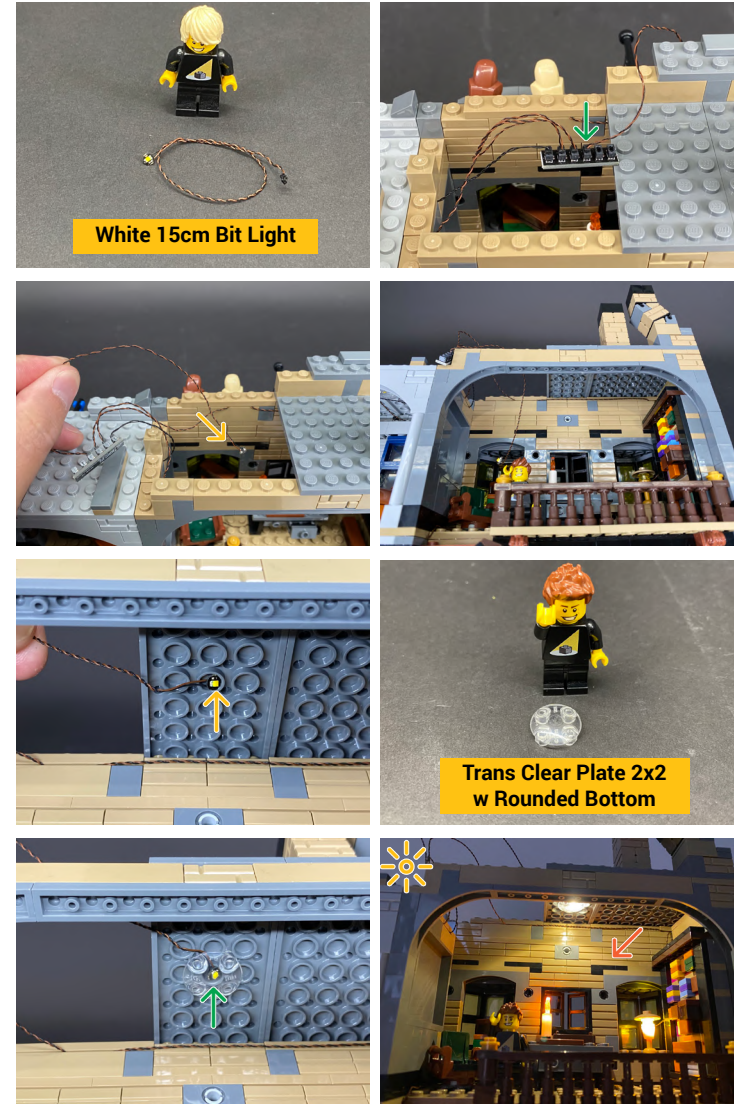
21




LEGEND: | ← DISCONNECT | → CONNECT / RECONNECT | ↻ TURN / FLIP | → DIRECTIONAL | ↻ TWIST / BRAID | ☀ POWER ON / TEST



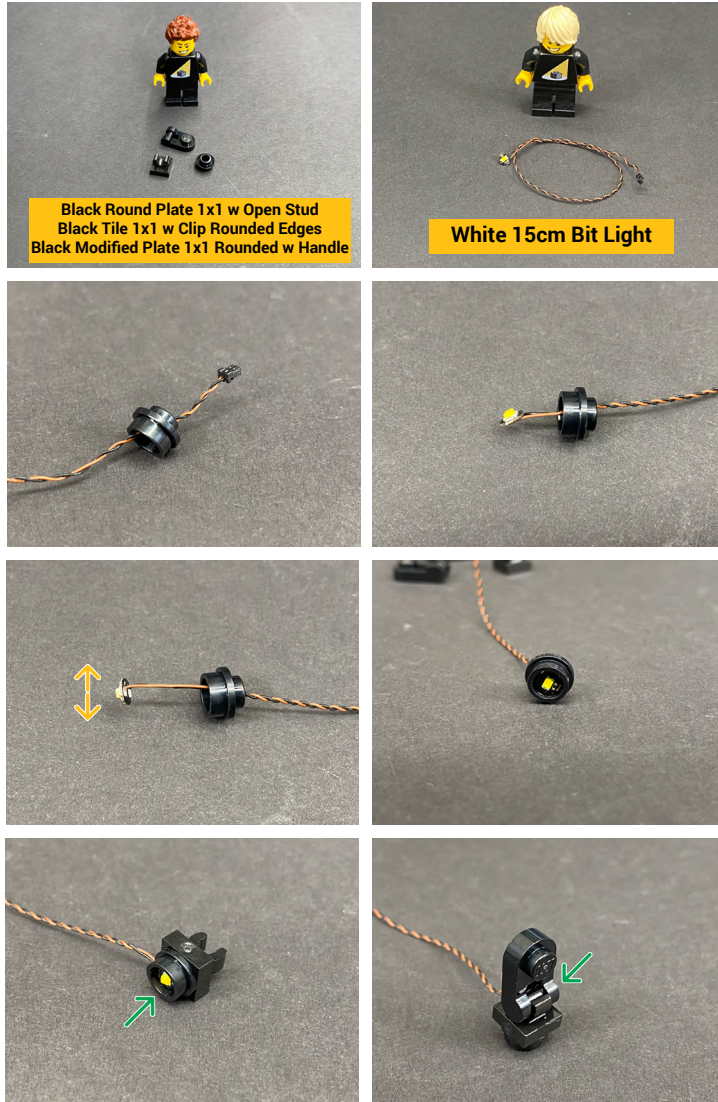
22



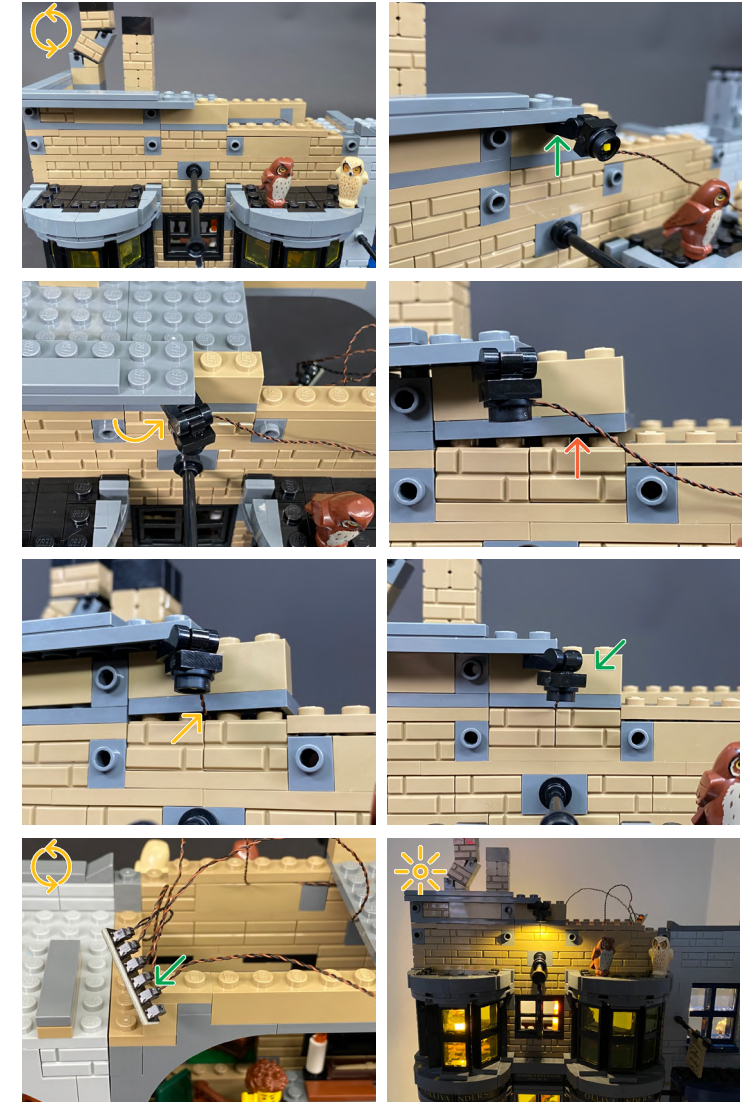
 If you experience any issues with the lights not working and suspect an issue with a component, please try a different port on the expansion board to verify where the fault lies (with the light or expansion board). To correct any issues with expansion board ports, please view the section addressing expansion board issues on our online troubleshooting guide.

LEGEND: | DISCONNECT | CONNECT / RECONNECT | TURN / FLIP | DIRECTIONAL | TWIST / BRAID | POWER ON / TEST

23

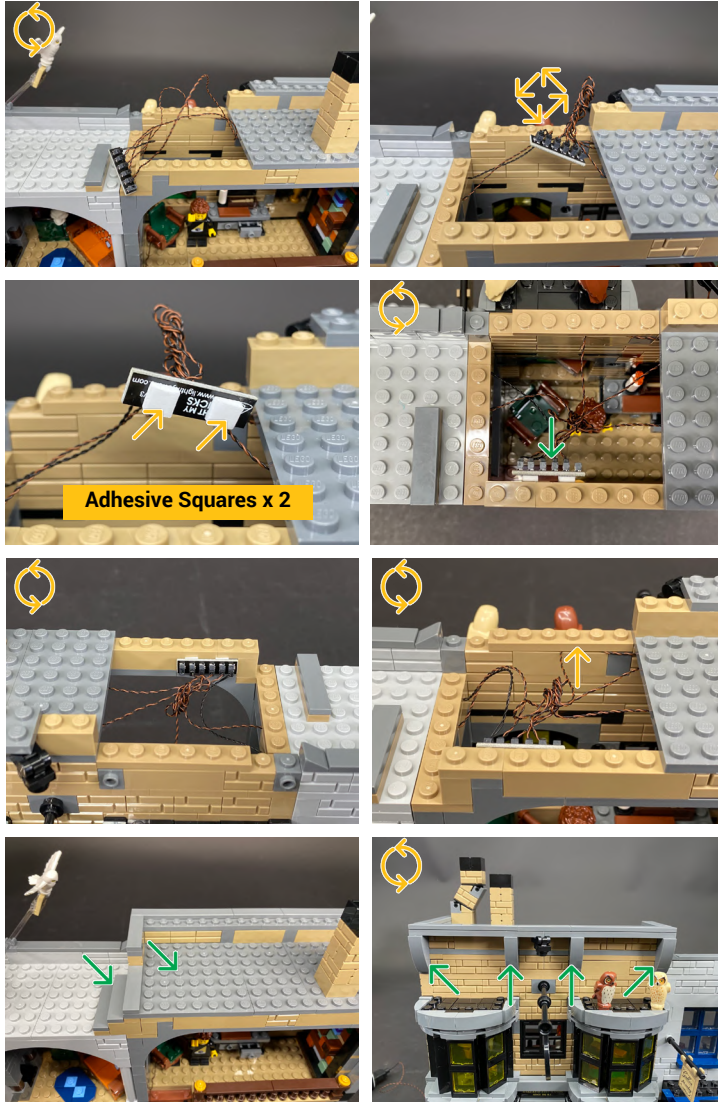


24

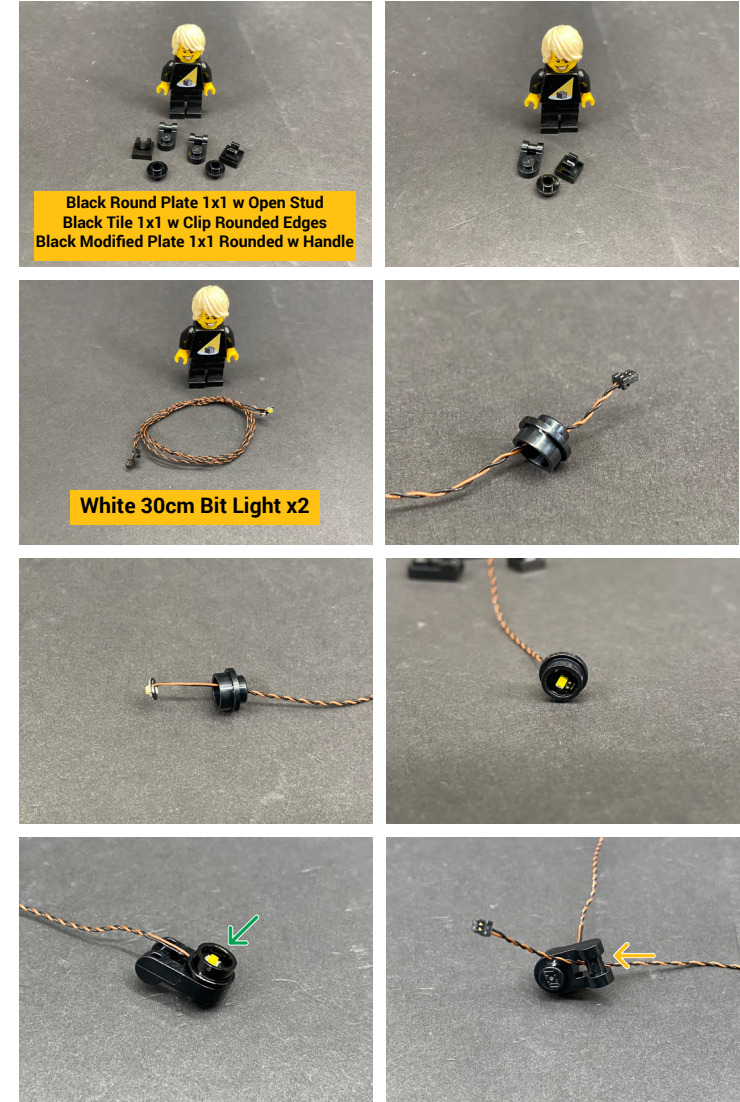


If you experience any issues with the lights not working and suspect an issue with a component, please try a different port on the expansion board to verify where the fault lies (with the light or expansion board). To correct any issues with expansion board ports, please view the section addressing expansion board issues on our online troubleshooting guide.

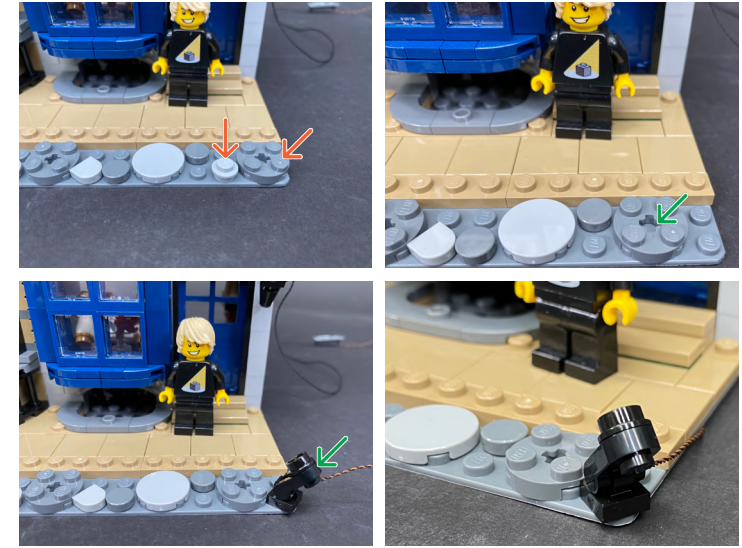
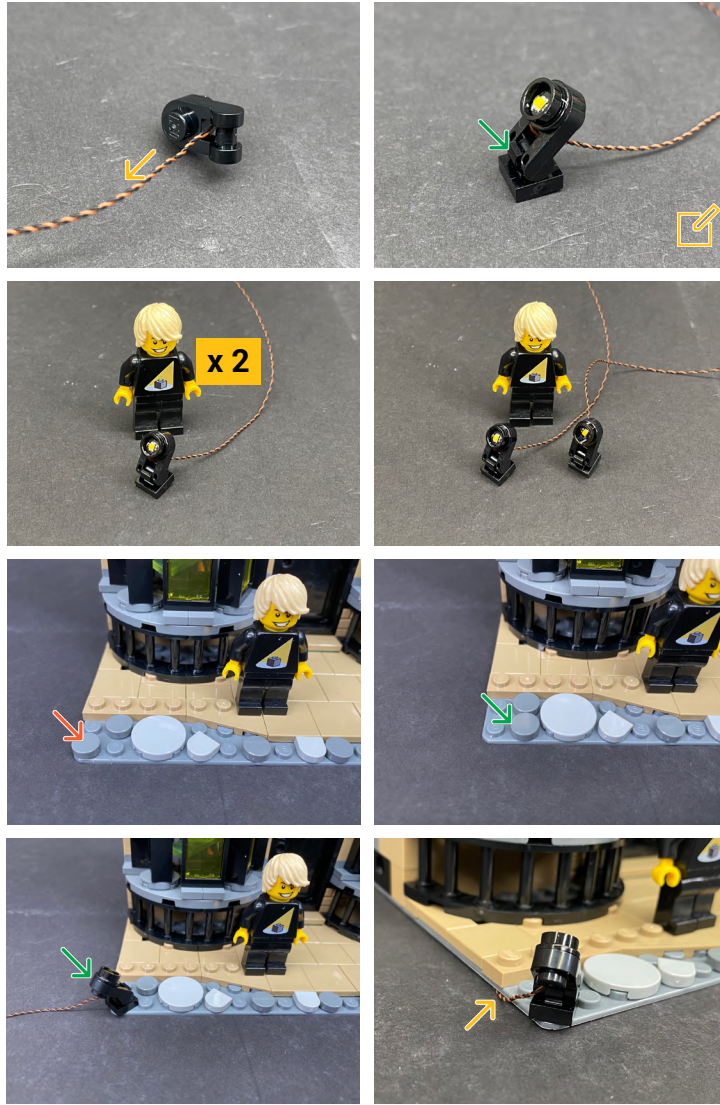
25



26

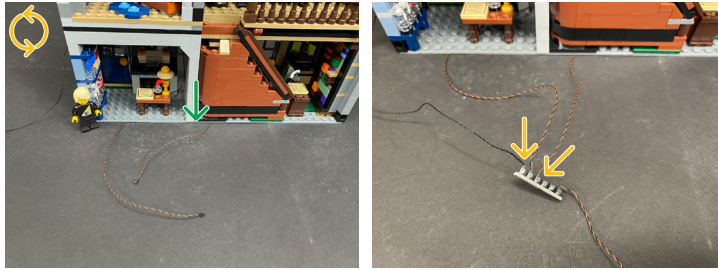



27



LEGEND: |  DISCONNECT |  CONNECT / RECONNECT |  TURN / FLIP |  DIRECTIONAL |  TWIST / BRAID |  POWER ON / TEST

28



 If you experience any issues with the lights not working and suspect an issue with a component, please try a different port on the expansion board to verify where the fault lies (with the light or expansion board). To correct any issues with expansion board ports, please view the section addressing expansion board issues on our online troubleshooting guide.

Quidditch Store & The Daily Prophet



PACKAGE CONTENTS FOR THIS SECTION:

- 3 × White 15cm Bit Lights
- 2 × White 30cm Bit Lights
- 2 × Warm White 15cm Large Bit Lights
- 1 × Warm White 30cm Large Bit Light
- 3 × Warm White Strip Lights

- 1 × 6-Port Expansion Board
- 1 × 8-Port Expansion Boards

- 2 × 5cm Connecting Cables
- 1 × 15cm Connecting Cable
- 1 × 30cm Connecting Cable
- 1 × 50cm Connecting Cable

- 1 × USB Power Cable (from previous section)

LEGO PIECES:

- 1 × Trans Clear Plate 2x2 w Rounded Bottom
- 2 × Plate 1x6 (Any Colour)
- 3 × Black Round Plate 1x1 with Open Stud
- 2 × Black Tile 1x1 with Clip Rounded Edges
- 3 × Black 1x1 Modified Plate Rounded with Handle
- 1 × Black Arm Skeleton, Bent with Clips (Horizontal Grip)

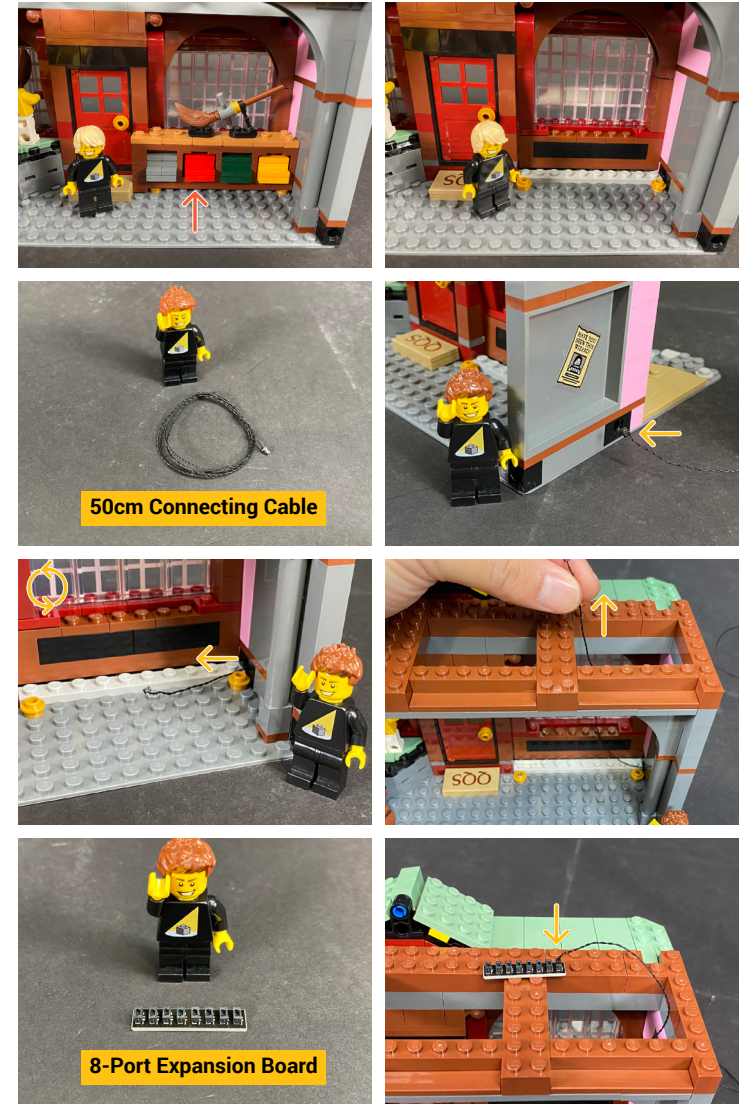
REQUIRED CONTENTS FOR THIS SECTION:

- USB Power Bank or USB Wall Adaptor
(From the previous section)

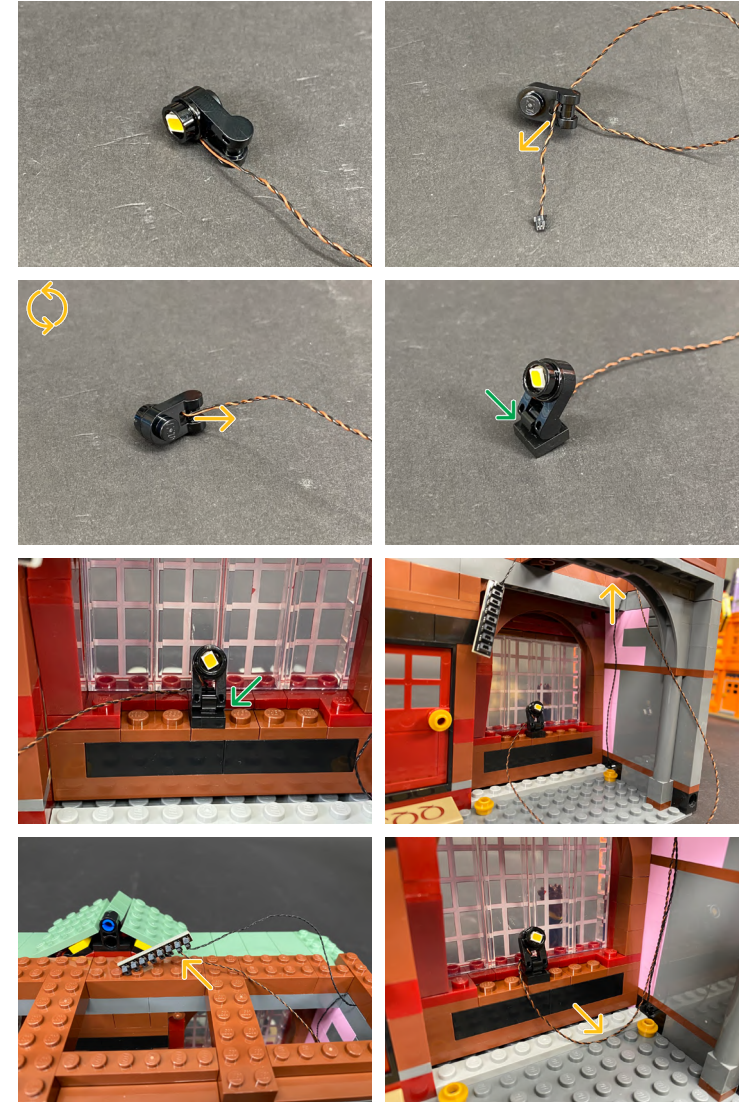
1



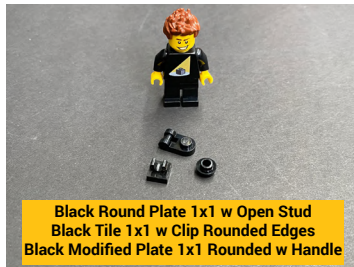
2



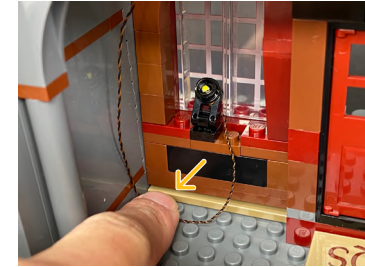
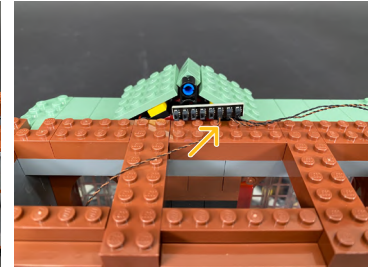
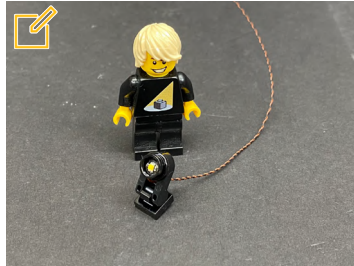
3



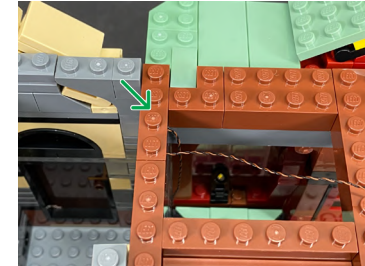
4



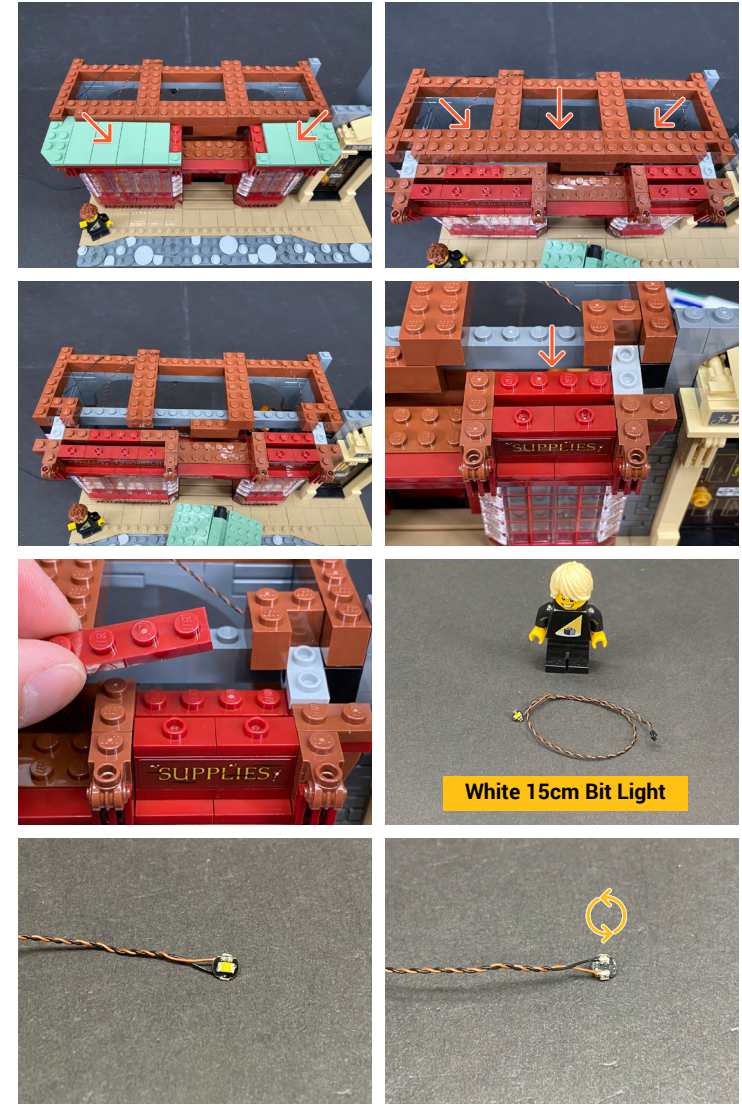
Install and assemble spot light as per step 3.



Connect USB Power Cable we disconnected from Olive Anders' Wand Store



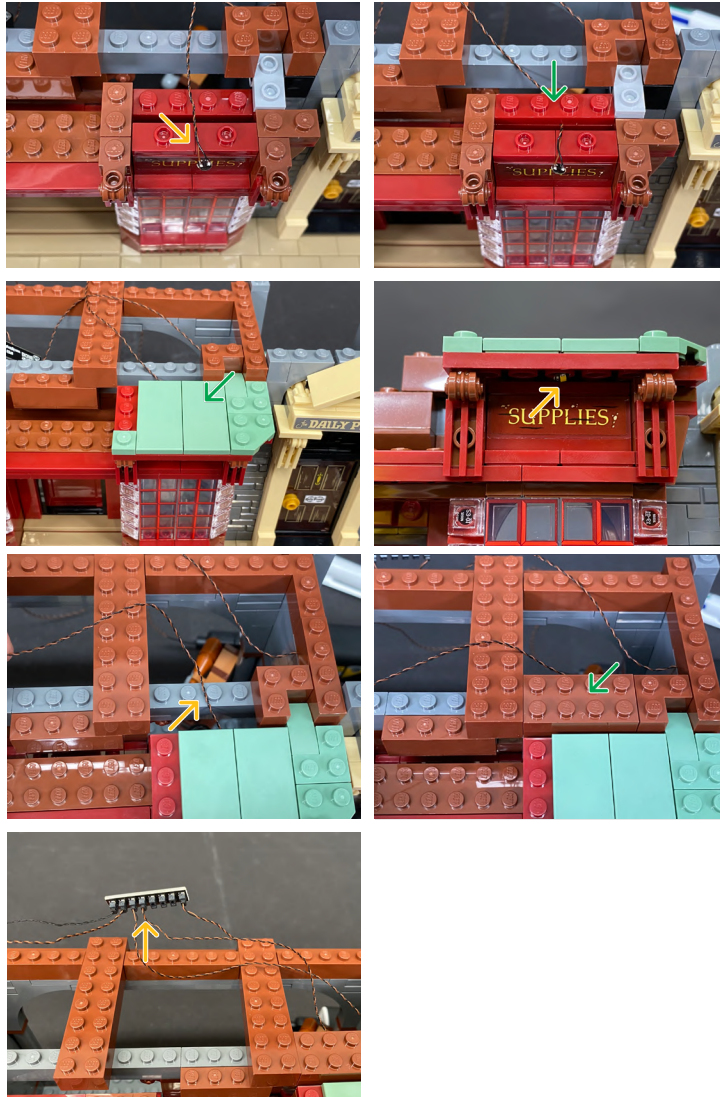
LEGEND: | ← DISCONNECT | → CONNECT / RECONNECT | ↻ TURN / FLIP | → DIRECTIONAL | ↻ TWIST / BRAID | ☀ POWER ON / TEST



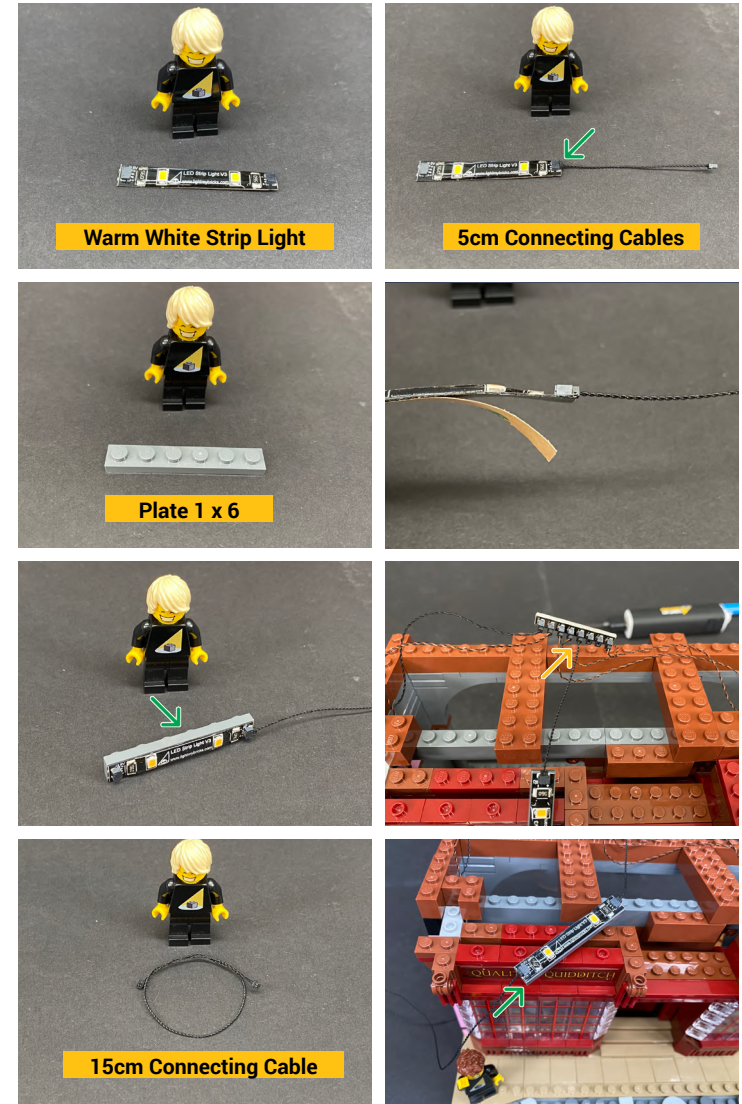
5

If you experience any issues with the lights not working and suspect an issue with a component, please try a different port on the expansion board to verify where the fault lies (with the light or expansion board). To correct any issues with expansion board ports, please view the section addressing expansion board issues on our online troubleshooting guide.





6

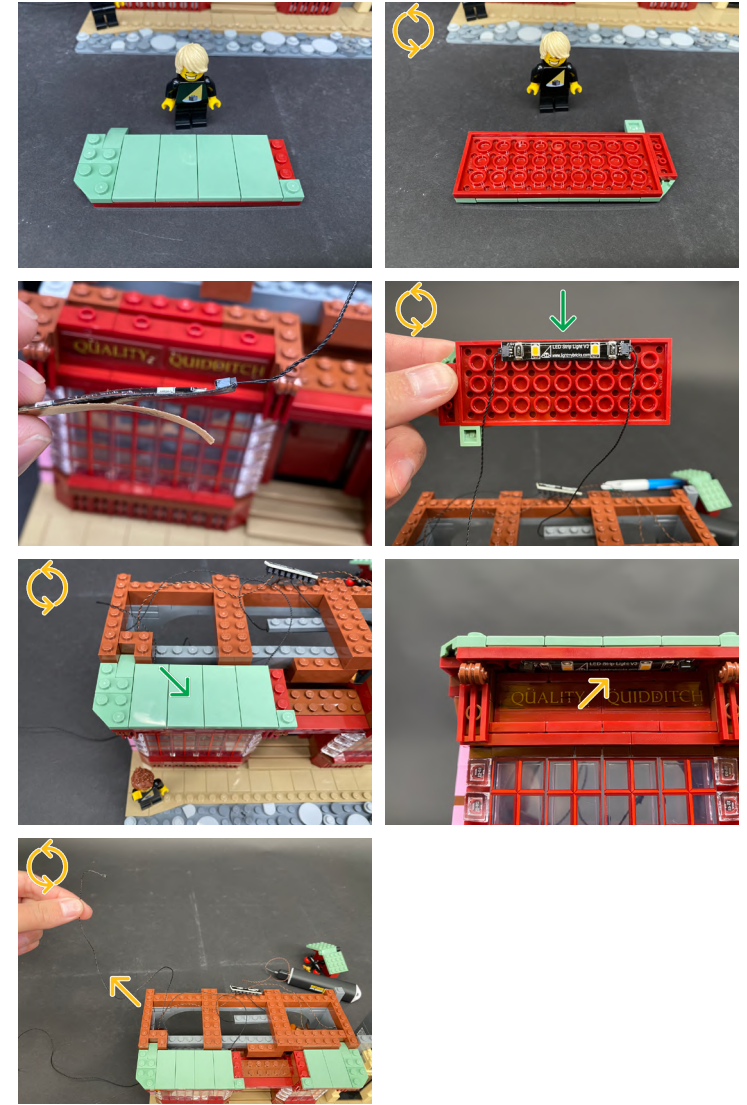


7



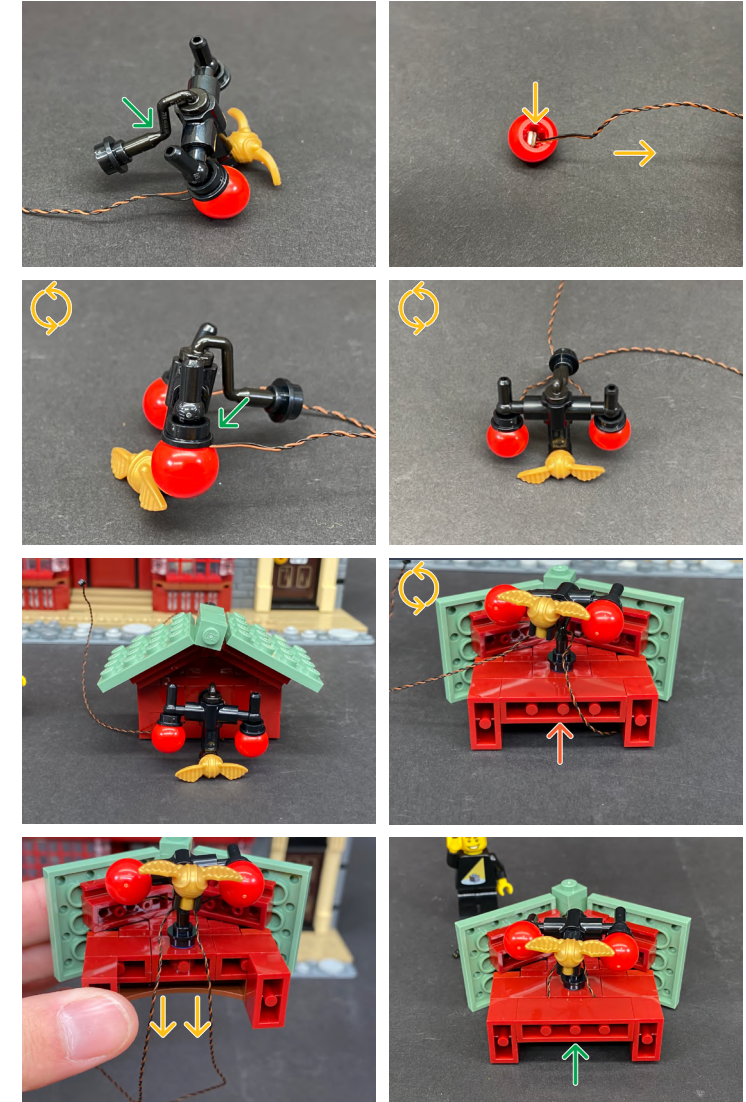
Warm White Strip Light

30cm Connecting Cable



LEGEND: | DISCONNECT | CONNECT / RECONNECT | TURN / FLIP | DIRECTIONAL | TWIST / BRAID | POWER ON / TEST

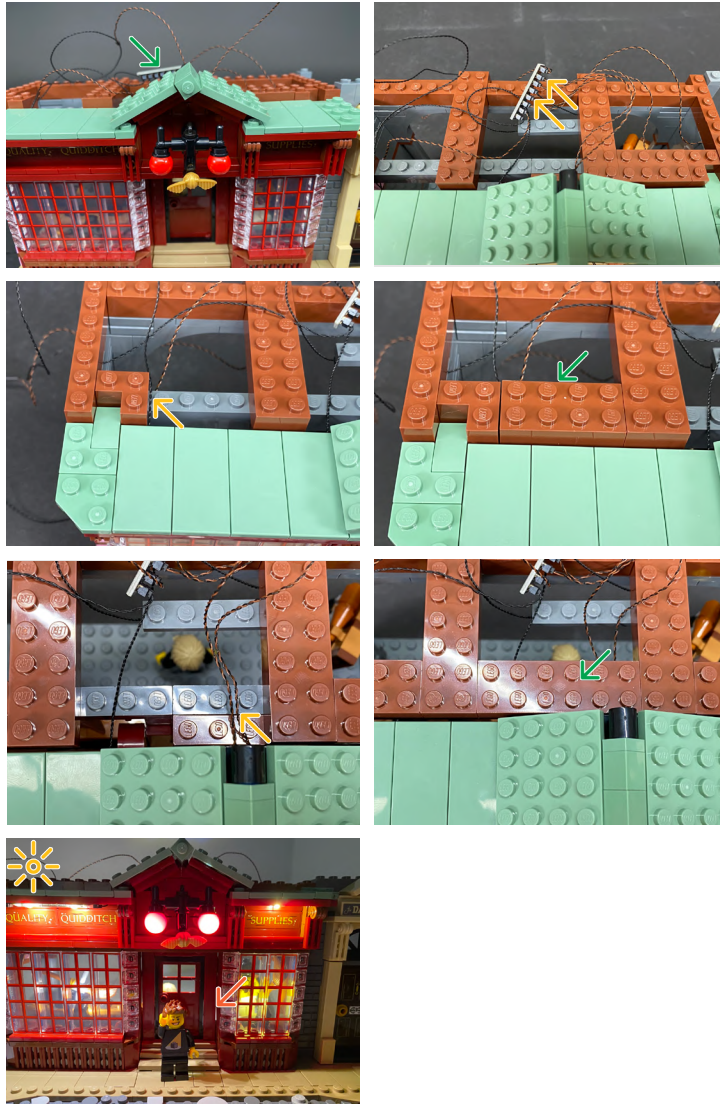
8



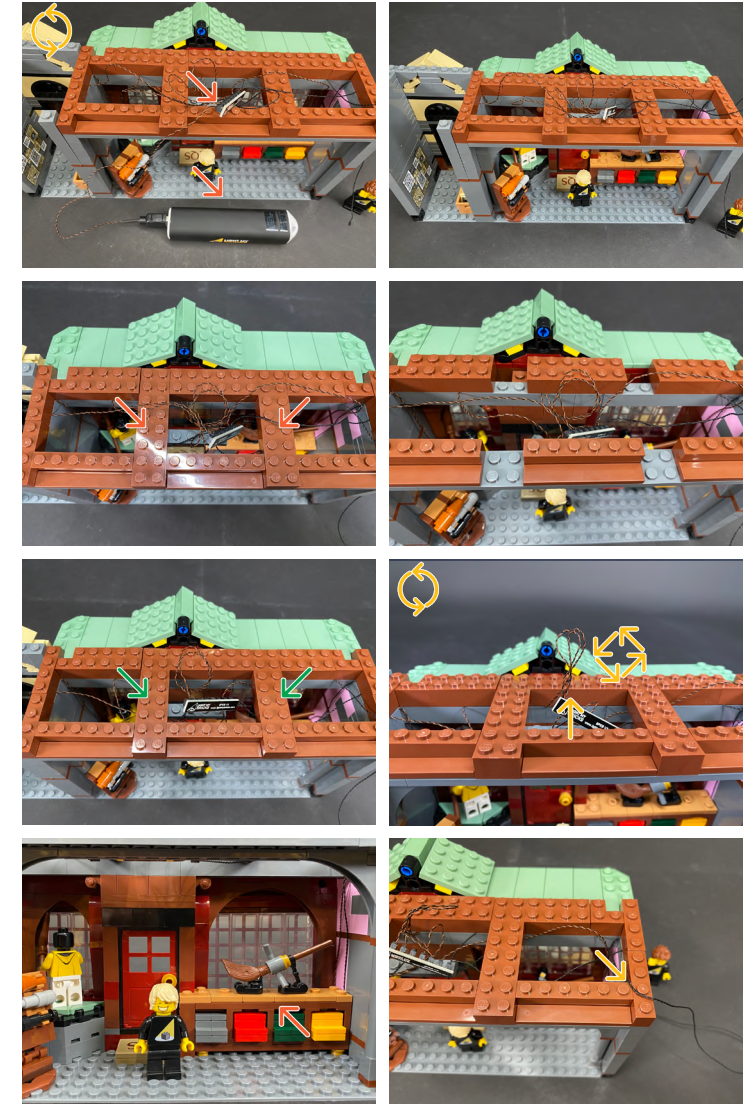
If you experience any issues with the lights not working and suspect an issue with a component, please try a different port on the expansion board to verify where the fault lies (with the light or expansion board). To correct any issues with expansion board ports, please view the section addressing expansion board issues on our online troubleshooting guide.


LEGEND: | ← DISCONNECT | → CONNECT / RECONNECT | ↻ TURN / FLIP | → DIRECTIONAL | ↻ TWIST / BRAID | ☀ POWER ON / TEST

9



10



 If you experience any issues with the lights not working and suspect an issue with a component, please try a different port on the expansion board to verify where the fault lies (with the light or expansion board). To correct any issues with expansion board ports, please view the section addressing expansion board issues on our online troubleshooting guide.

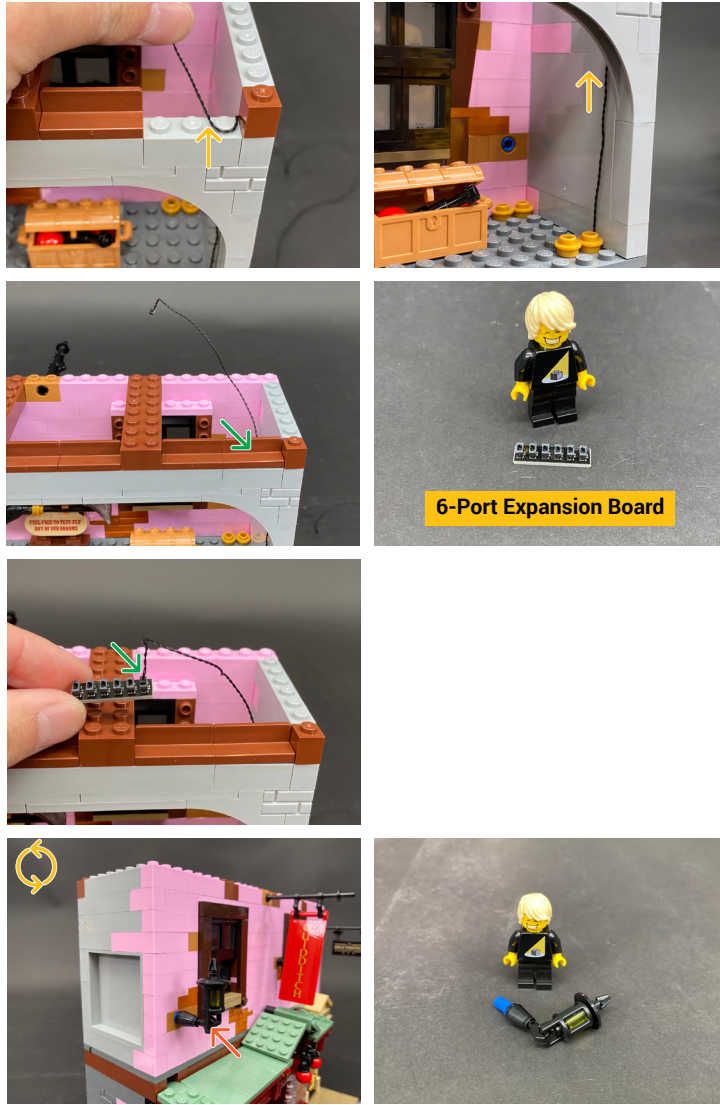
11



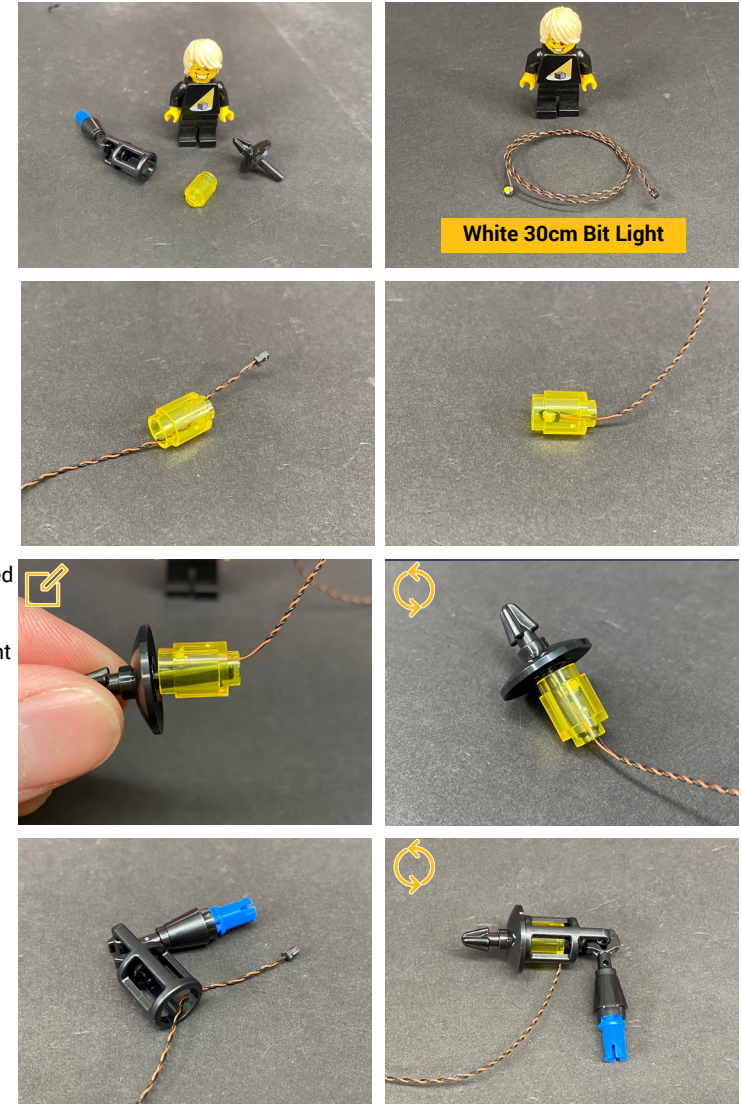
12



13



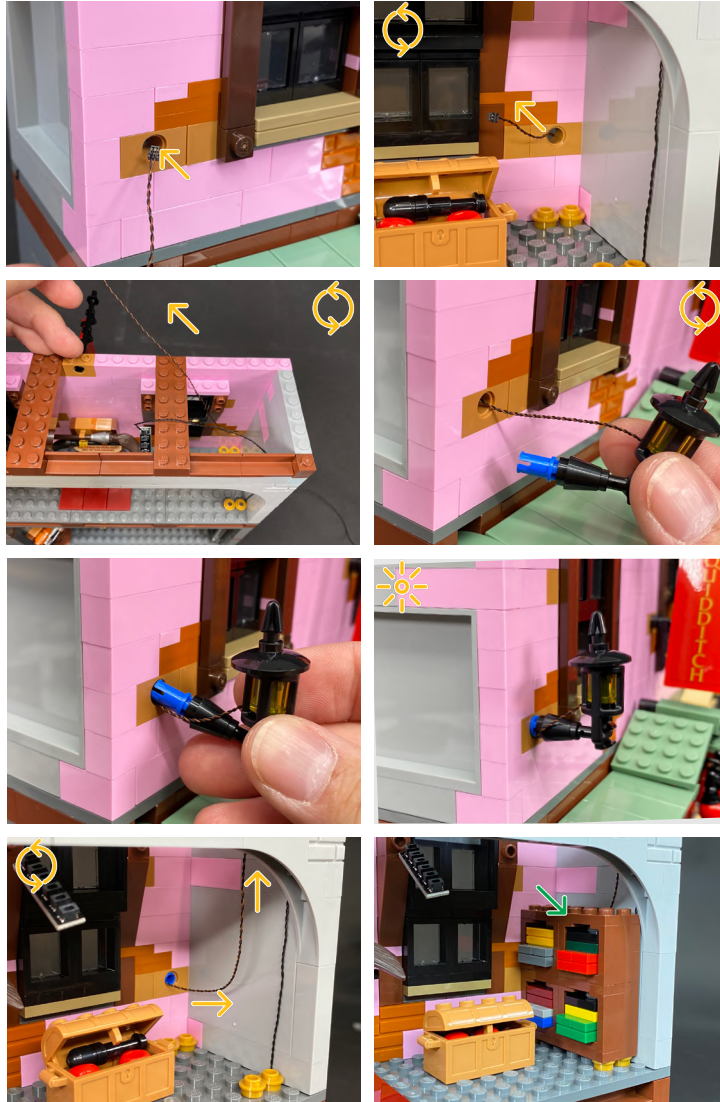
6-Port Expansion Board



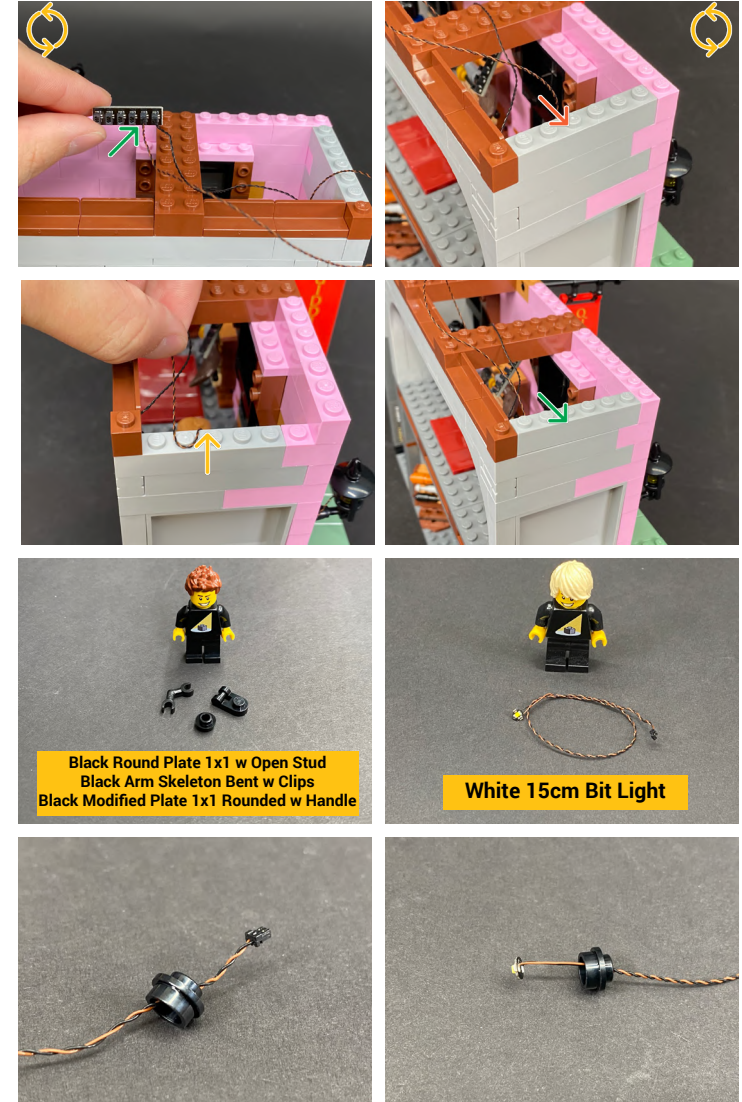
White 30cm Bit Light

The Bit Light installed to the lamp will prevent the Gold Bar from aligning straight

14



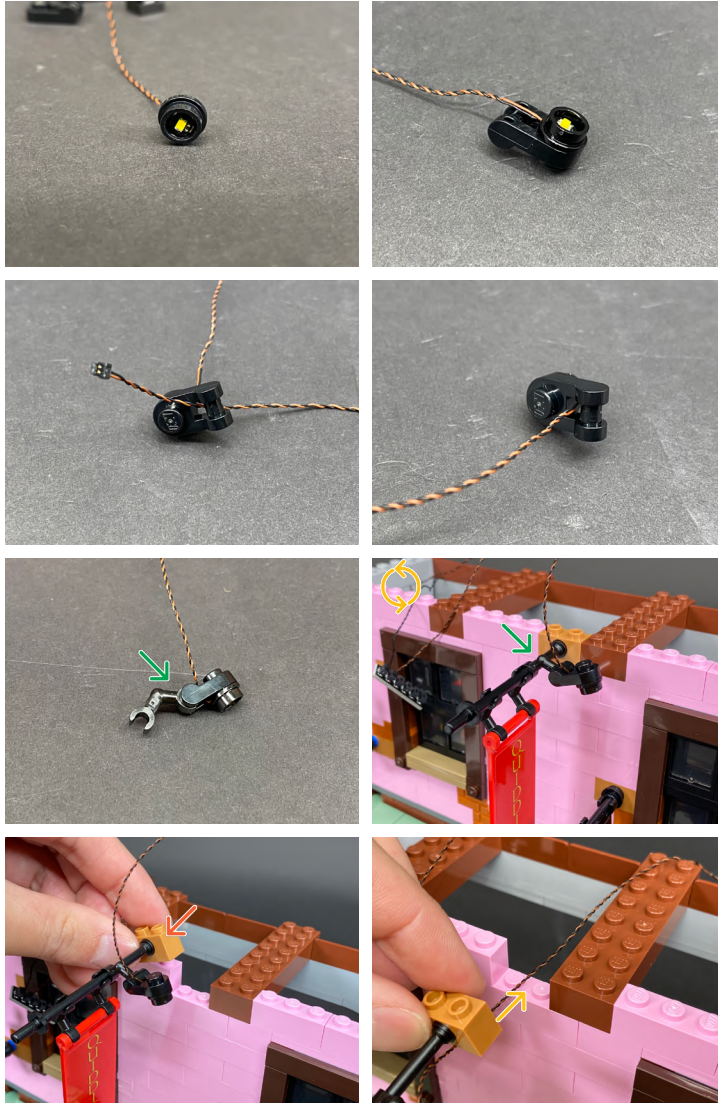
15




Black Round Plate 1x1 w Open Stud
Black Arm Skeleton Bent w Clips
Black Modified Plate 1x1 Rounded w Handle


White 15cm Bit Light

LEGEND:  DISCONNECT |  CONNECT / RECONNECT |  TURN / FLIP |  DIRECTIONAL |  TWIST / BRAID |  POWER ON / TEST



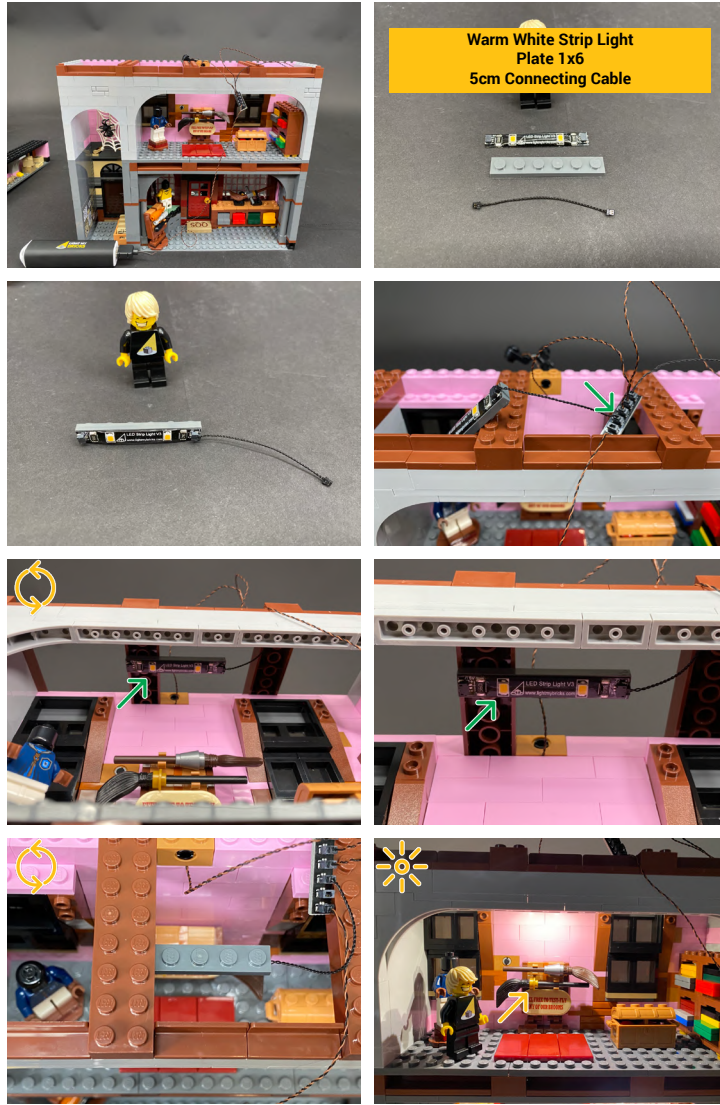
 Connect USB Power Cable we disconnected from Olive Anders' Wand Store



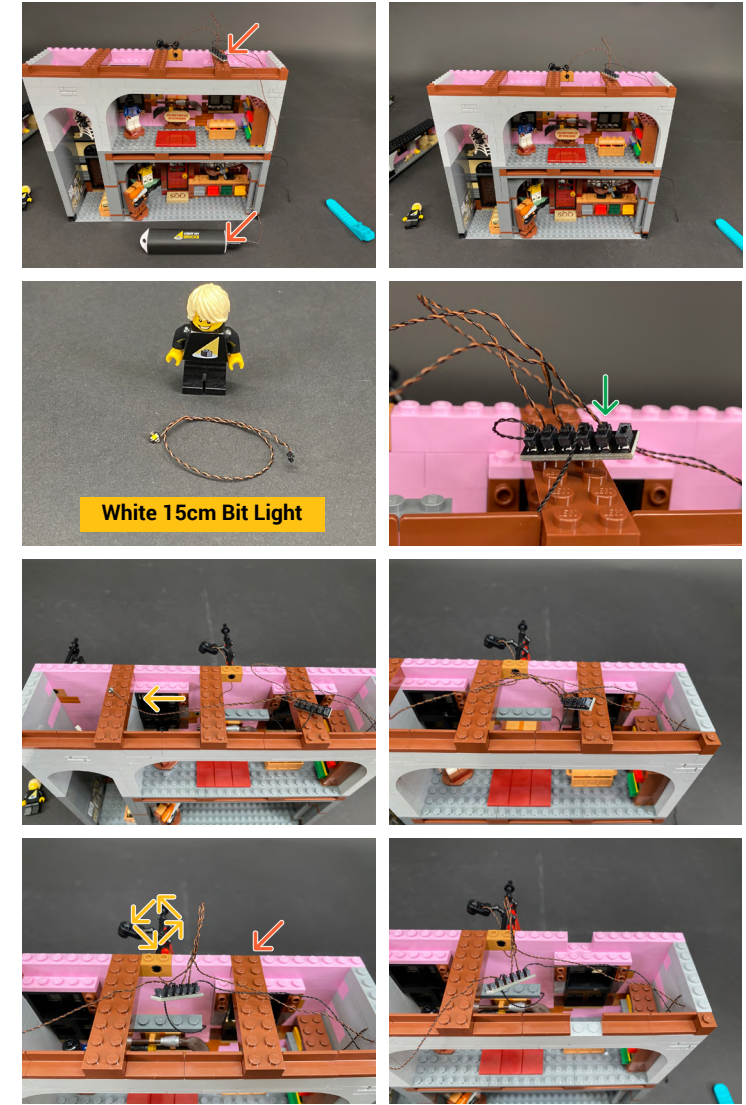
 If you experience any issues with the lights not working and suspect an issue with a component, please try a different port on the expansion board to verify where the fault lies (with the light or expansion board). To correct any issues with expansion board ports, please view the section addressing expansion board issues on our online troubleshooting guide.

LEGEND: | ← DISCONNECT | → CONNECT / RECONNECT | ↻ TURN / FLIP | → DIRECTIONAL | ↻ TWIST / BRAID | ☀ POWER ON / TEST

16



17



📄 If you experience any issues with the lights not working and suspect an issue with a component, please try a different port on the expansion board to verify where the fault lies (with the light or expansion board). To correct any issues with expansion board ports, please view the section addressing expansion board issues on our online troubleshooting guide.

LEGEND: | ← DISCONNECT | → CONNECT / RECONNECT | ↻ TURN / FLIP | → DIRECTIONAL | ↻ TWIST / BRAID | ☀ POWER ON / TEST

18



Trans Clear Plate 2x2 w Rounded Bottom

☑ Connect the other end of the 50cm Connecting Cable to a spare port on the 6-Port Expansion Board behind Olive Anders Wand Shop

☑ Connect the USB Power Cable back to the expansion board to power ON and test



☑ If you experience any issues with the lights not working and suspect an issue with a component, please try a different port on the expansion board to verify where the fault lies (with the light or expansion board). To correct any issues with expansion board ports, please view the section addressing expansion board issues on our online troubleshooting guide.

Part 1 Complete

This finally completes installation of the Light My Bricks Diagon Alley 75978 Light Kit - Part 1.

To continue on to Part 2 of this Light Kit please **click here** to return to the Instructions Portal to access the download link.

Alternatively, they can be accessed by visiting our online guides portal.



Troubleshooting

Light My Bricks lighting kits contain individual components that are very small and can be easily damaged if not handled correctly.

To prevent unnecessary damage to components, we highly recommend that the User Guide section, “Important things to note” is read carefully. Follow the handling procedures in the User Guide to help prevent faults and damages to your Light My Bricks components.

If you are experiencing issues with your Light My Bricks set, watch our troubleshooting video [here](#) or read on for a list of common causes to help you troubleshoot.

Troubleshooting

Firstly, ensure that the batteries have power using a battery charge gauge.

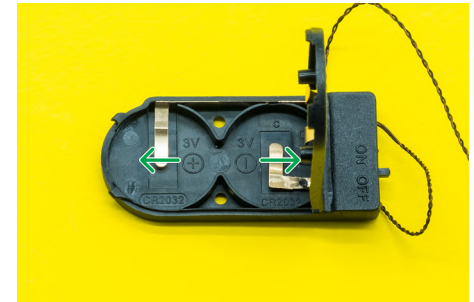
If the batteries have no power, replace the batteries.

If the batteries still have power, check to see if the batteries have been inserted correctly into the battery pack.

CHECK FOR CR2032 BATTERIES USING THE FLAT BATTERY PACK

Inside the battery pack is a symbol indicating which side the (round) CR2032 battery should be inserted. Check that the "+" side of the battery pack has the battery with the "+" symbol facing downwards.

On the opposite side, the "-" side of the battery pack should have the battery flipped upside down, that is the "+" symbol facing upwards.



Troubleshooting

CHECK FOR CR2032 BATTERIES USING THE ROUND BATTERY PACK

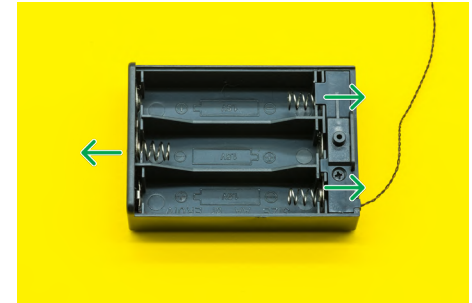
Inside the battery pack is a symbol indicating which side the (round) CR2032 battery should be inserted. In this case, for the stacked battery pack, ensure that BOTH batteries have the "+" symbol facing upwards.



CHECK FOR AA BATTERIES USING THE AA BATTERY PACK

Inside the battery pack are symbols indicating which direction the AA battery should be inserted. The flat side of the battery should be paired with the spring side of the battery pack.

If the batteries have been installed correctly and your kit still isn't operating correctly, the next step is to check the wiring.



Troubleshooting

CHECK YOUR WIRES

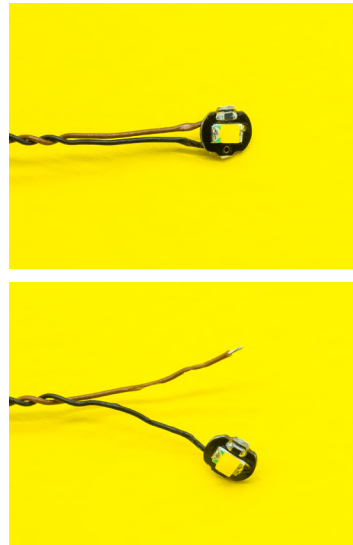
In order for Light My Bricks components to fit in between and underneath LEGO® bricks, the components need to be very small.

Due to this nature, Light My Bricks components can be easily damaged when not handled correctly.

Be careful when removing unpacked components out of the packaging and ensure not to forcibly pull at the wires as this can damage the soldering that attach the wires to the LEDs.

If the wiring is detached from the LED itself, the light will not operate.

When connecting lights to your LEGO set, check that there are no pinched wires underneath or in between bricks and plates. When the wires are pinched and the exposed wires are touching each other, this can cause a crosswire and the lights to not function correctly.

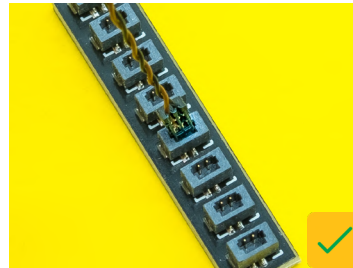
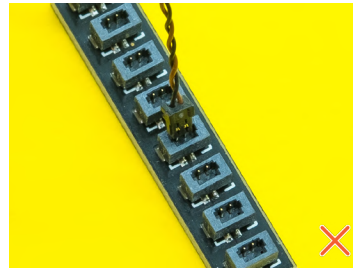


Troubleshooting

CHECK YOUR EXPANSION BOARD PORTS/ STRIP LIGHT PORTS / EFFECTS BOARD PORTS

It is important to note that connectors can only be inserted to the expansion board, strip light, or effects board ports in one direction.

Forcibly inserting connectors in the incorrect direction will result in damaging the pins inside each of the ports on your component board.

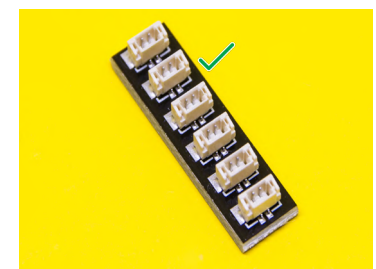
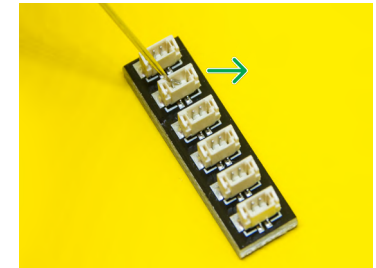
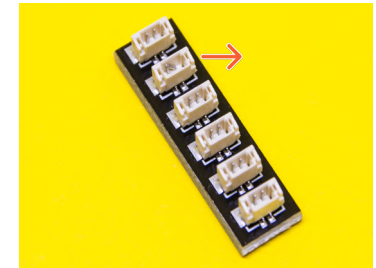


Not only will a light connected to the damaged port not work, but if the pins inside the port are bent to a point they are touching each other, this can result in all other lights in the system to stop working. This is a short circuit.

A short circuit can also result in overheating of the board, cable or batteries. If you suspect a short circuit, **DISCONNECT POWER IMMEDIATELY**. Batteries can fail, catch fire, or even explode if left connected to a short circuit for too long.

If you suspect you have a faulty component due to a bent pin, try the following steps:

If you look carefully inside each of the ports, each port contains 2 small pins that should be straight. You will be able to identify a faulty port if it has any bent pins.

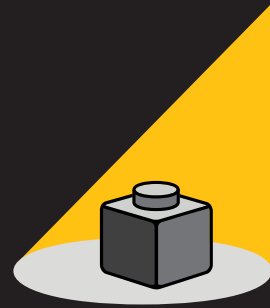


Contact Us

If you have an enquiry regarding the online shop, our products or a general enquiry please refer to our Frequently Asked Questions webpage here.

Alternatively, you can contact our Customer Services team by completing the form here, or email us at info@lightmybricks.com

We thank you for purchasing this product and hope you enjoy!



**LIGHT MY
BRICKS**

lightmybricks.com
